

HOLSWORTHY MARKET REPORT

Wednesday 10th June 2026

SALE TIMES

09:45 am - Draft Ewes followed by Finished Lambs

10:30 am - Store Lambs

09.45 am - Calves followed by Stirks

11:00 am - Store Cattle followed by Finished & OTM Cattle

11:00 am - Dairy Cattle



588 NEW SEASON LAMBS, DRAFT EWES AND RAMS

09:45am

Auctioneer: Steve Prouse - 07767 895366

Ryan Walter - 07534 166251

NEW SEASON LAMBS

More lambs on offer met a mixed trade with the fed good meat young tight skinned lambs still selling to a premium. However on the day there were several lambs handling leaner and started to go woolly which were harder to place. Top on the day for the sappy lambs was 460ppk for a pen of 42kgs at £193 from Crouch and Wakeham of Lifton followed by 459ppk for a pen of March born 43kgs to £197.50 from Sally & Chris Prouse of Clawton and Mr Bridgman of Headdon Farm, Jacobstowe made 456ppk for his 38kgs at £175. Then 2 vendors at 435ppk, JA Slee of Buckland Brewer saw his 42.2kgs to £191 and Mike & Chutney Watkins of Torrington saw their 42.2kgs to £191 also. Top per head on the day for the heavies was £211 from Sally & Chris Prouse of Clawton then £210.50 from the Nancekivell family of Herdacott, Kilkhampton.

WEIGHT	TOP		AVERAGE	
LAMBS	Per head	P/Kg TLW	Per head	P/Kg TLW
32.1-39	175	456	160	435.6
39.1-45.5	200	460	189.5	441
45.6-52	209	450	203	427.2
52+	211	397	210.8	392.8
Overall	211	460	194	440.3
EWES				
Light	154		-	
Heavy	197		-	
Rams	-		-	



DRAFT EWES

Smaller entry and a flying trade and a lot more could have been sold. Top on the day was £197 for ¾ meat Charollais x in from S Walker of Bridgerule and several Suffolk x to £185 and over to a top of £190 from Chris Ham & Daughters of Frithelstock. Texel x ewes to £187 from S Piper & Sons of Herdwicke, Holsworthy.

MORE EWES WANTED NEXT WEEK PLEASE!!

**Entries invited for next week, please contact Steve on 07767 895366
Fieldsman Ryan Walter on 07534 166251**

Dairy, Beef and Sheep Clubs
Data Analysis

Competitively priced farm medicines
Live stock fertility testing and advice

Vet Tech services
Disease Prevention

Holsworthy
Stratton
Bradworthy
Camelford

www.penbodevets.co.uk

Penbode
Farm Vets Since 1840

379 CALVES – 09.45 am

Auctioneers: Tim Kivell & Sam Hutchings

MILK CALVES

230 milk calves sold to another lively trade with everything looking very well bid for. Top of the section was £800 given for a standout Blue bull in from A & D Heyward, Coryton. Further Blue bulls hit £790 for TWP Uglow, North Petherwin, £742 Samuel Down, Lapford, £720 (x2) for Nick & Kate Bowden, Highampton and £700 for a smashing sort from Rob Veale, Halwill with 46 Blue bulls averaging £586. LJ Goaman & Sons presented a good run of young Charolais bulls which drew £718, £698, £668, £618 and £590. Hereford bulls sold

MILK CALVES						
BREED	BULLS			HEIFERS		
	No	Top	Ave	No	Top	Ave
Angus x	11	680	494.36	13	670	476.69
Limousin x	11	648	569.55	7	595	545.71
British Blue x	46	800	586.52	42	650	516.40
Hereford x	36	710	554.61	28	630	479.93
Charolais x	8	718	599	10	595	528.90
Friesian	6	365	324.17	-	-	-
Simental	5	698	579.20	-	-	-
Welsh Black	3	385	293.33	-	-	-
Galloway	2	540	540	-	-	-

extremely well to £710 (x2) for TJ Nattle & Partners, Lanivet whilst AC Withecombe & Son of Littleham presented a fantastic run of Hereford bulls which reached £705 (x2), £680 (x2), £678 and £670. Younger Hereford bulls £600 (x2) for P Best, St Newlyn East with 36 Hereford bulls averaging an impressive £554 per head. GG Smale & Son, Launceston sold a cracking pair of Simmental bulls at £698 and a single behind at £650 and Johny Heard of Hartland sold his Hereford bull at £550. Limousin bulls in next which rose to £648 and £640 for Samuel Down, Latford, £600 John Frayne, North Petherwin and £590 David Renfree, Liskeard. Angus bulls, another incredible trade and sold to £680 for Rob Veale, £645 for a very young sort in from Merv Hutchings, St Giles on the Heath, £645 also from TJ Nattle & Partners and £550 Harvey Bros, Wiggaton. A pair of eye-catching Galloway bulls made £540 for John Frayne, whilst Welsh Black bulls made £385 for Bill Law, Hollacombe. Heifers on milk sold away to £650 for a smashing Blue heifer in from PJ Martin, Buckland Filleigh, others also £650 Nick & Kate Bowden, £648 P&J Pengilly & Sons, Hartland, £642 PF Cleave, Morwenstow, £635 Brian Scambler, Bude. Hereford heifers sold away to £630 & £610 for some strong sorts sold by TJ Nattle & Partners others £630 AC Withecombe & Son. Followed by Charolais heifers at £595 for RW & JR Finnimore & Son, £595 LJ Goaman. Limousin £595 (x2) Samuel Down, £560 Amble Dairy, Wadebridge and £540 John Frayne.

DAIRY SIRED BULLS

A very small number of Friesian bulls which sold away to £365(x2) and £340(x2) for some good sorts in from David Renfree of Liskeard.

WEANED CALVES

A massive entry of 146 weaned calves sold to a phenomenal trade. ButterHills Livestock Ltd travelled down from Ilfracombe to witness a serious trade with their 5 months old Blue steers realising a mega £1240. Other Blue steers at only 6 months old to £1120 and £980 sold by Bernie Worth also coming down from Ilfracombe. Other highlights of the day was the large consignment in from Pryor Dairying Ltd travelling up from Redruth to see their 3½ month old Blue steers at an eye watering £990 and £940. Angus from the same farm hit a tremendous £940, £900 and £850. Weaned heifers soared up to £1020 for a trio of 5-month-old Blue heifers from ButterHills Livestock Ltd. Further Blue heifers £880, £870 and £800 (3½ months) in from Pryor Dairying Ltd, who sold their Angus heifers extremely well to £805, £800 and £790 (3½ months).

Note to calf vendors: please pre-enter calves with the office so we can notify buyers on 01409 253275

110 STORE CATTLE – 11:00am
Auctioneer: David Kivell - 07899 960272

A huge crowd for a tight entry with well fleshed forward feeding Continentals selling well. A few steers topped at £2190 for 2 12mth steers from Messrs EG Bluett & Son of North Tamerton, others to £2030 and 19mth Limousin steers to £1730 from RE Colbear of Okehampton. Native steers to £1930 for a 23mth old British Shorthorn again from Mr RE Colbear of Okehampton. Best of the British Blue heifers to £1960 for 5 British Blues from Mr SW Graham of Bude who saw others to £1940 (4) and 2 26mth British Blue heifers from RE Colbear to £1930. £1930 was also realised again for 3 22mth British Blues from Messrs EG Bluett & Son, others from the same farm at £1910 & £1870. A quality run of 14mth Continentals from Messrs DF & ER James of Halwill saw British Blue & Limousin steers to £1680 and Limousin and British Blue heifers to £1520 & £1400. Young Aberdeen Angus steers in demand, £1480 was realised for 4 steers in from Mr MJ Gay of Ashwater, other 13mth Aberdeen Angus steers from Messrs JAH & RH James of Bradworthy to £1460 and 13mth heifers from the same farm to £1390. A superb consignment of well fed 11mth British Blues from Messrs RWH Dilling of Highampton topped at £1670 and 11mth old heifers from the same farm to £1610(2) & £1380(3).



COWS & CALVES

More urgently required! 2 small framed 28 & 32mth cows from Messrs TPW Uglow of North Petherwin, first with 4mth twins calves being a British Blue steer and Hereford heifer to £2900 and the Aberdeen Angus cow with a British Blue steer calf to £2400.

**To book in stores or arrange an on-farm valuation, call:
Alec Shadrick 07767 896136, Charlie Kivell 07794 000325 or
Holsworthy Office 01409 253275**

LEVEL UP YOUR FARMING SKILLS WITH TORCH VETS!

Ready to gain hands-on expertise and stay ahead in the farming? Join our Torch Farm Skills Courses – designed to empower you with practical knowledge, from animal health to farm management and everything in between!

Why join?

- Industry-leading experts
- Tailored, interactive sessions held in small groups for maximum tuition time.
- Skills to boost your farm's productivity
- With courses in AI, Foot trimming, Mastering Medicines, calf rearing, Udder health, Lambing courses and so much more there is something for everyone whether you are new to the industry or fancy updating your knowledge!

Don't miss out on this opportunity to invest in your future.

Register your interest today for 2025 dates by emailing events@torchvets.com



Independent vets, dedicated care

Bideford
01237 870456

Holsworthy
01409 331007

South Molton
01769 610000

Ilfracombe
01271 879516



torchfarmvets.com
info@torchfarmvets.com

Your **Development Land and Planning Team** here at Kivells have housebuilders and developers who are interested in the right sites – from small family run builders who are looking for just 10 plots to large national housebuilders who want sites for 100 plus houses.

If you own land on the edge of a large village or town with good access and road frontage, we would be delighted to chat with you about your land and if there is a chance of planning for housing development in the future. With the recent reforms to the planning system, this could be an opportunity to add value to your land that could work harder for you.



Contact your Development Land & Planning Team today to discuss your options.



Oliver Keates BSc (Hons)
Dip TP, MRTPI
Head of Development Land
and Planning Services
07554 060370



Mark Bromell BSc (Hons)
MRICS FAAV FLAA
Director
07966 430001



Mark Bunt
BSc MRICS FAAV
Director
07879 640970



Simon Alford
Director
07789 980203



Thomas Rattray
BSc (Hons) MRICS FAAV
Director
07813 016804



Claire Quick
BSc (Hons) MRICS FAAV
Rural Chartered Surveyor
07789 980204



Ian Caunter BSc (Hons)
MRICS FAAV FLAA
Rural Chartered Surveyor
07813 068935



Sam Turner
MNAEA
Director
07951 240305



Daniel Stokes
MNAEA
Director
07581 006203

HOLSWORTHY MARKET HEALTH HUB

Your Local Farming Health Hub at Holsworthy Livestock Market



Market Nurse

- FREE service offering clinical assessment and referrals - no appointment needed!
- Every Wednesday - 8am-10am/12pm-4pm - Penbode Hut

Healthcare Assistant

- Providing mini-health checks e.g. blood pressure, blood sugar, BMI
- 3rd Wednesday of the month - Market Café

Community Navigator

- Connecting you to local organisations and support
- 2nd Wednesday each month - Market Café/Kivells Mobile Auction Office

Find us on Facebook @
Holsworthy Market Health Hub

2026 SALE DATES



Monthly Live & Online Collective Sales
of Machinery, Vehicles & Implements

Holsworthy Market

SATURDAY 7TH FEBRUARY

SATURDAY 7TH MARCH

SATURDAY 11TH APRIL

SATURDAY 9TH MAY

SATURDAY 13TH JUNE

SATURDAY 4TH JULY

SATURDAY 1ST AUGUST

SATURDAY 5TH SEPTEMBER

SATURDAY 3RD OCTOBER

SATURDAY 7TH NOVEMBER

SATURDAY 5TH DECEMBER

See our calendar for
full list of events



In addition to on-farm sales held throughout the year covering the whole of the South West

See our website for more info!

WWW.KIVELLS.COM | CALL: 01409 253253 | EMAIL: MACHINERY@KIVELLS.COM

KIVELLSMACHINERY.MARTEYE.IE

LARK PLANT HIRE LTD

PLANT HIRE, HAULAGE & AGRICULTURAL
CONTRACTORS



FORAGING SERVICES

ALSO AVAILABLE
AS REQUIRED

Triple Mowers
Double Mowers
Tedding
50ft Rake
30 ft Rake
4 Silage Trailers
Buckrake
Loading Shovel



LIME SPREADING

Two types of lime
and sea sand for
your
spreading
requirements

FREE soil testing!



OVERSEEDING

For all herbal ley
overseeding, grass,
rape,
wild bird seed and
cover crops



All available for 2024 Season! Email: office@larkplant.co.uk

Call Office: 01409 211214

Ian: 07939 538902 or Rob: 07854 362450

Market Prices

Mart Customers get Daily Prices for free

Sign up or upgrade
your plan with your
mart account
number* for market
prices 12pm & 8pm
daily, for free.

*Usually found on your sales
invoice or statement.

marketprices.laa.co.uk



Market Prices

The screenshot shows the 'Market Prices' app interface. At the top, there is a header with the LAA logo, the text 'Market Prices', a user profile icon, and a menu icon. Below the header is a 'Filters' button. The main content is a table with the following data:

Old Season Lambs 12/03/24	Total	
	Number	Price p/kg
Super Light (17-25.4kg)	121	253.7
Light (25.5-32kg)	934	317.4
Standard (32.1-39kg)	4273	365.9
Medium (39.1-45.5kg)	10207	391.8
Heavy (45.6-52kg)	8351	390.0
Other (over 52kg)	2947	377.6
SQQ (25.5-45.5kg)	15414	380.1
Total	26833	382.4

Below the table, there is a section for 'Cull Ewes' with a 'Total' label.



Renew your VAN Number

EU legislation requires a Veterinary Attestation Number (VAN) or Farm Assurance status to sell livestock for slaughter for export outside of the UK.

VAN numbers expire every 12 months
Don't forget to renew.

Speak to your local Veterinary Practise to renew.

Share your new VAN number with your mart.

ONE.LIVE.HUB



Tradition Meets Technology

Kivells, A complete service for all your agriculture and property needs across Devon, Cornwall and beyond.



Find us on



MartEye

KIVELLS

www.kivells.com

Oxenpark Farm Hersham, Bude

- Wonderful setting with far reaching views over Bude Bay and the North Cornish coast.
- Three bedroom farmhouse and four further cottages
- Superb range of outbuildings suitable for a variety of uses
- In all about 16.18 acres with further land available by separate negotiation.
- Freehold
- Available as a whole or in three lots
- EPC: D, C, C, C & D

Lot 1: Three bedroom farmhouse, two holiday cottages, one further cottage and a lodge. Range of adaptable farm buildings, income generating wind turbine and just over 16 acres.
Guide Price: £1,395,000

Lot 2: A useful block of 45½ acres of pasture and arable land including 3 acres of mature woodland.
Guide Price: £515,000

Lot 3: A single gently sloping pasture field extending to 6.34 acres.
Guide Price: £85,000

Guide Price (as a whole): £1,995,000

Holsworthy Farms & Land Department
farms@kivells.com | 01409 259547



Farms For Sale

KIVELLS

www.kivells.com

Vennbrook Varley Farm, PRIXFORD, Barnstaple

- 100 acre residential and stock farm
- Attractive, well proportioned bungalow (AOC)
- Useful range of livestock and storage buildings
- Ring fenced pasture land
- Superb views
- EPC C [77]

Guide Price: £1,800,000

Holsworthy Farms & Land Department
farms@kivells.com | 01409 259547



Farms For Sale

KIVELLS

www.kivells.com

Puddaven Farm North Bovey, Newton Abbot

- Immaculate Farmhouse
- Stunning two bedroom Holiday Cottage
- Outbuildings and stabling
- Outdoor equine menage
- Well-maintained pasture land
- Versatile lifestyle property
- Far reaching views
- In all totalling approximately 32.35 acres (13.09 hectares)
- EPC: E & D

Guide Price: £1,695,000

Exeter Farms & Land Department
exeter@kivells.com | 01392 252262



Farms For Sale

KIVELLS

www.kivells.com

Landabethick Blisland, Bodmin

- Charming, 6 bedroom detached farmhouse
- Excellent range of traditional farm buildings suitable for a variety of uses
- In all about 77 acres comprising a combination of good agricultural land and woodland
- Parking, garaging and workshop space
- Unrivalled, private position at the end of a private drive
- Freehold with vacant possession available
- EPC: D

Guide Price: £1,350,000

Exeter Farms & Land Department
exeter@kivells.com | 01392 252262



Farms For Sale

KIVELLS

www.kivells.com

North Hayne Farm Shillingford, Tiverton

- Attractive and spacious five bedroom farmhouse with extensive living accommodation
- Superb range of traditional outbuildings with potential (STP)
- Productive pastureland, woodland and river access
- In all about 37.36 acres
- Freehold with vacant possession available
- EPC: F

Guide Price: £1,075,000

Exeter Farms & Land Department
exeter@kivells.com | 01392 252262



Farms For Sale

KIVELLS

www.kivells.com

Fern Hill Farm Mount, Bodmin

- Farm with significant development potential
- Range of agricultural and equestrian buildings
- 60.29 acres of land including productive pasture
- Two bedroom lodge
- Planning for farm dwelling and residential caravan
- Located in a super rural location with far reaching valley views
- Freehold with vacant possession upon completion

Guide Price: £1,000,000

Liskeard Farms & Land Department
mark.bunt@kivells.com | 01579 345543



Farms For Sale

KIVELLS

www.kivells.com

Trehere Farm Trewidland, Liskeard

- Substantial four bedroom (all en-suite) modern house enjoying extensive country views
- Range of buildings currently comprising a livery yard with potential for alternative uses
- Approximately 36.51 acres of pasture, amenity woodland and a sand school
- Wonderful rural location yet conveniently situated close to several villages and the town of Liskeard
- EPC: D

Guide Price: £995,000

Liskeard Farms & Land Department
mark.bunt@kivells.com | 01579 345543



Rolstone Bungalow Morchard Bishop, Crediton

- A wonderfully presented and immaculate four bedroom Bungalow, subject to an Agricultural Occupancy Condition (AOC)
- Adjacent Workshop and Office Unit
- A useful Agricultural Building
- Well maintained productive Pasture Land
- In all totalling approximately 10.74 acres (4.34 hectares)
- EPC: C

Guide Price: £925,000

Exeter Farms & Land Department
exeter@kivells.com | 01392 252262



Farms For Sale

KIVELLS

www.kivells.com

Holdstrong Farmhouse Coryton, Okehampton

- A delightful 5 bedroom 17th Century Devon Longhouse
- Situated in a beautiful rural setting on the edge of the Dartmoor National Park
- Superb views
- Stabling and further outbuildings
- Pond
- Coppice
- In all about 15.87 acres
- Freehold with vacant possession available
- EPC: E

Guide Price: £850,000

Exeter Farms & Land Department
exeter@kivells.com | 01392 252262



Farms For Sale

KIVELLS

www.kivells.com

Southmoor Farm Winnards Perch, St Columb

- A superbly presented residential farm in a sought-after North Cornish location
- Well presented, five bedroom detached property in fantastic condition
- Versatile outbuildings
- Productive pasture and woodland
- Sought after location with easy access to the North Cornish coastline
- In all about 33.54 acres
- EPC E [50]

Guide Price: £825,000

Holsworthy Farms & Land Department
farms@kivells.com | 01409 259547



Farms For Sale

KIVELLS

www.kivells.com

West Burrow Farm Bratton Clovelly, Okehampton

A quietly set rural small holding offering huge potential.

- Grade II* Listed thatched farmhouse in need of modernisation.
- 3 beds, 2 receptions.
- Two adjoining traditional barns.
- Land and woodland
- EPC: Exempt as a listed property

Guide Price: £645,000

Holsworthy Farms & Land Department
farms@kivells.com | 01409 259547



Development Site For Sale

KIVELLS

www.kivells.com

Development Site at Lower Newton Farm Zeal Monachorum, Crediton, Devon

- Valuable residential development opportunity
- Range of agricultural buildings with planning permission for demolition and creation of three new build, detached four and three bedroom dwellings
- Potential under extension of Permitted Development Rights for retention and conversion of the existing buildings (Clarkson's Law - Maximum 10 dwellings), subject to planning
- Additional land available

Guide Price: £450,000

Exeter Farms & Land Department
simon.alford@kivells.com | 01392 252262



Aerial view looking north west

Farms For Auction

KIVELLS

www.kivells.com

North Kestle Tregadillett, Launceston

For Sale by Public Auction on Wednesday 24th June, 7.00pm at Lifton Strawberry Fields, Lifton, Devon, PL16 0DH.

- A charming rural small holding with a substantial farmhouse
- In need of renovation
- Range of outbuildings including some stone barns
- 4.78 acres

Guide Price: £375,000

Holsworthy Farms & Land Department
farms@kivells.com | 01409 259547



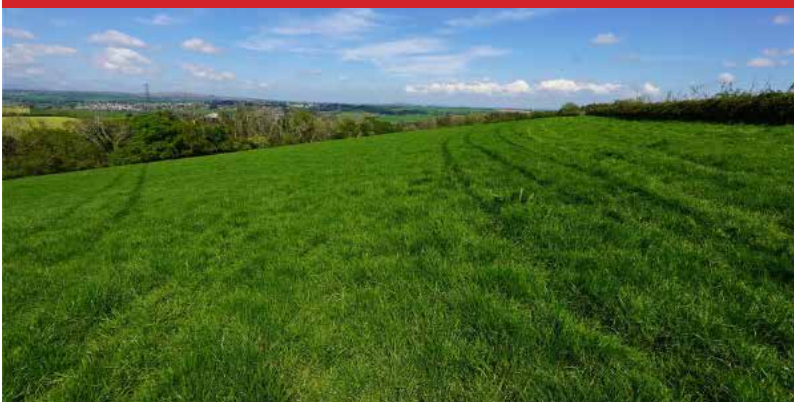
Land For Sale

KIVELLS

www.kivells.com

Land At Trevillies

St. Keyne, Liskeard | Guide Price £375,000 -



Approximately 45.64 acres of productive arable/pasture land and amenity woodland with mains water connected. Freehold with vacant possession upon completion.

Liskeard Farms & Land Department
mark.bunt@kivells.com | 01579 345543

Land at Stoke Canon

Exeter, Devon | Offers in Excess of £375,000



A highly productive run of level arable and pastureland with livestock handling pens extending to just under 46 acres.

Exeter Farms & Land Department
simon.alford@kivells.com | 01392 252262

Land at Criftoe Farm

Tregonetha | Guide Price £675,000 - £700,000

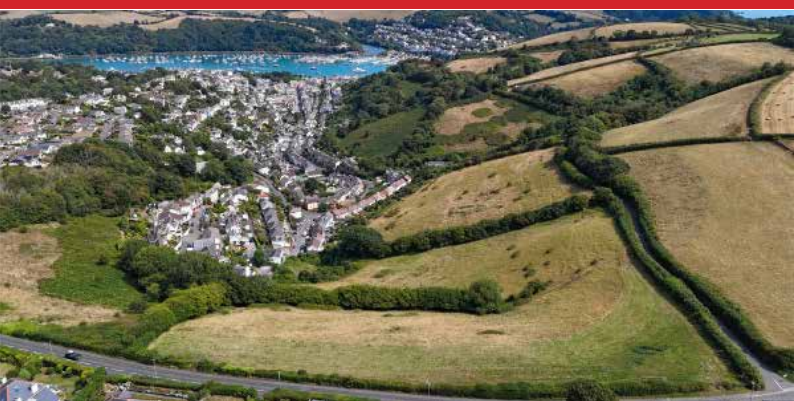


Approximately 64.98 acres of quality cropping land and amenity woodland and a useful modern farm building (with potential for alternative uses, subject to planning).

Liskeard Farms & Land Department
mark.bunt@kivells.com | 01579 345543

Land Off Yorke Road

Dartmouth | Guide Price £195,000



Approximately 12.26 acres in two separate field parcels both down to permanent grassland, previously grazed with livestock.

Exeter Farms & Land Department
exeter@kivells.com | 01392 252262

Land at Polskeys Farm

Roche, St. Austell | Guide Price £495,000



Approximately 59.18 acres of pasture and conservation land accessible off a quiet parish road with mains water connected, a useful livestock building and yard.

Liskeard Farms & Land Department
mark.bunt@kivells.com | 01579 345543

Land at Four Beeches Farm

Sourton, Okehampton | Guide Price £224,000



Approximately 26.25 acres of productive pasture land with easy access to the A386. Suitable for amenity, equestrian and traditional farming.

Exeter Farms & Land Department
exeter@kivells.com | 01392 252262

Land at Higher Reedy Mill

Trewidland, Liskeard | Guide Price £50,000



Approximately 4.39 acres of pasture land, accessible off a quiet parish road close to the village of Trewidland in a quiet rural location with far reaching views.

Liskeard Farms & Land Department
mark.bunt@kivells.com | 01579 345543

Land at Lidburn Hill

Tedburn St Mary, Exeter | Guide Price £100,000



An attractive south facing arable field extending to approximately 8.95 acres suited for farming, conservation or amenity uses. For sale as a whole.

Exeter Farms & Land Department
exeter@kivells.com | 01392 252262

Land forming part Home Park

Ipplepen, Newton Abbot | Guide Price £250,000



Approximately 17.57 acres providing an area of secluded pastureland and woodland. The land is well suited for conservation or amenity use.

Exeter Farms & Land Department
exeter@kivells.com | 01392 252262

Land & Buildings at Horwood

Horwood, Bideford



Just over 166 ½ acres of productive arable land and a useful range of modern agricultural buildings.

- **LOT 1:** Just over 132 acres of arable land with a range of modern farm buildings. **Guide Price: £1,600,000**
- **LOT 2:** Circa 34 ½ acres of arable land in a single level field. **Guide Price: £400,000**

Holsworthy Farms & Land Agency
farms@kivells.com | 01409 259547

Land at Crylla

Minions, Liskeard



Extending to approximately 141.40 acres in all, the land at Crylla comprises a completely ring-fenced block of predominantly level agricultural land, divided into a number of useful-sized enclosures and enclosed by traditional stone walls. The land is currently utilised for the grazing of livestock and offers an excellent opportunity for continued agricultural use, with practical sized parcels well suited to grazing and general stock management.

Guide Price: £1,400,000

Holsworthy Farms & Land Agency
farms@kivells.com | 01409 259547

Land and buildings Mucksey Lane

Exbourne, Okehampton



A unique development opportunity sat within 27.85 acres of Grade 2 arable land with river frontage. Full planning permission has been granted for the demolition of the existing building and the construction of a substantial four-bedroom dwelling. Further details can be found on the West Devon Borough Council planning portal under reference 3424/25/FUL.

Guide Price: £475,000

Exeter Farms & Land Agency
ben.hancock@kivells.com | 07760 887581

Land located at Wrigwell

Bickington, Newton Abbot



A fantastic block of productive arable land, well located and with excellent road access. Located just 2 miles east of the A38 Devon Expressway and bordered by the river Lemon, the land is suited for farming, conservation or amenity uses. **Available as a whole or in three lots.**

- **LOT 1:** Approximately 28.59 acres forming a single large field parcel with direct access to the public highway from the north. **Guide Price: £315,000**
- **LOT 2:** Approximately 9.19 acres forming a single gently sloping parcel. Access to the field is available from the south or north directly off the public highway. **Guide Price: £100,000**
- **LOT 3:** Approximately 7.19 acres and comprises of a level field parcel with the River Lemon forming the parcels northern edge. Access is available to the west directly off the public highway. **Guide Price: £85,000**
- **As a whole:** Approximately 44.97 acres of productive arable land. **Guide Price: £500,000**

Exeter Farms & Land Agency
exeter@kivells.com | 01392 252262

Land & Buildings For Rent

GENERAL PURPOSE BUILDING TO LET
Stourscombe, Launceston | £595 pcm



A new 45' x 30' shed at Stourscombe near Launceston, with great access to A30/A388. Ideal for storage.

Thomas Rattray
thomas.rattray@kivells.com | 07813 016804

Land for Auction

Wednesday 24th June, 7.00pm

Venue: Lifton Strawberry Fields, Lifton, Devon PL16 0DE

KIVELLS

www.kivells.com

Land at Liftdown

Liftdown, Lifton | Auction Guide Price £75,000
For sale by public auction - Wednesday 24th June



Extending to some 7.87 acres the land at Liftdown is contained within a gently sloping single enclosure which is all down to permanent pasture.

Holsworthy Farms & Land Agency
Farms@kivells.com | 01409 259547

Land at St Keyne

Liskeard | Auction Guide Price £5,000 - £10,000
For sale by public auction - Wednesday 24th June



Approximately 0.40 acres of woodland and amenity land accessible off a quiet parish road, in a picturesque valley location with a woodland stream running through.

Liskeard Farms & Land Agency
mark.bunt@kivells.com | 01579 345543

Freehold Amenity Land

Tremeale, Daws House | Auction Guide Price £15,000
For sale by public auction - Wednesday 24th June



Parcel of Freehold amenity land extending to approximately 4,225 sq ft with a stone building offering huge potential, subject to necessary building consents, and a swimming pool beneath the mature shrubs.

Launceston Estate Agents
Launceston@kivells.com | 01566 777777

Land at Spring Lodge

Eastcott, Bude | Auction Guide Price £250,000
For sale by public auction - Wednesday 24th June



Versatile parcel of approximately 31 acres of gently sloping land with sea views and boasting a well stocked fishing lake, 5 acres of woodland and a steel framed open barn.

Bude Estate Agents
Bude@kivells.com | 01288 359999

Land at Woolladon

Meeth, Okehampton | Auction Guide Price £130,000
For sale by public auction - Wednesday 24th June



Approximately 17.90 acres of pasture land together with a wooded copse area, arranged in two useful enclosures and well suited to a range of uses.

Exeter Farms & Land Agency
Exeter@kivells.com | 01392 252262

2026 Auction Dates

Wednesday 24th June
Wednesday 29th July
Wednesday 2nd September
Wednesday 7th October
Wednesday 11th November
Wednesday 9th December



Thinking of selling by auction? Contact our experienced team today for a **FREE** no obligation auction appraisal.
www.kivells.com

Previous Auction Results

Wednesday 27th May, 7.00pm

KIVELLS

www.kivells.com

Penloe Field

Woolley, Bude | Auction Guide Price £65,000 - £75,000
SOLD: £75,000



Approximately 5.59 acres in a quiet rural setting with lovely views and a useful open sided storage building - 27' x 15' (8.23m x 4.57m) with a rain water harvest tank to one side.

Holsworthy Farms & Land Agency
Farms@kivells.com | 01409 259547

Land at Ugworthy

Chilsworthy, Holsworthy | Auction Guide Price £45,000 - £50,000
SOLD: £50,000



Extending to some 5.67 acres, the Land at Ugworthy comprises a mainly level pasture field with natural hedge bank boundaries and a small corrugated sheet clad shed (in poor repair) and an ancient burial ground.

Holsworthy Farms & Land Agency
Farms@kivells.com | 01409 259547

Land at Milton Damerel

Holsworthy | Auction Guide Price £20,000
SOLD: £34,000



This pretty 2.42 acre field comprises a mainly level paddock which benefits from excellent access from the adjoining main road on its northern boundary. The land would be suitable for amenity purposes, keeping livestock or ponies.

Holsworthy Farms & Land Agency
Farms@kivells.com | 01409 259547

Land at Furzedon Field

Trewidland, Liskeard | Auction Guide Price £110,000 - £115,000
SOLD: £115,000



Approximately 13.80 acres of pasture land in a ring fence block with a woodland stream boundary and fringe and mains water connected to three troughs.

Liskeard Farms & Land Agency
mark.bunt@kivells.com | 01579 345543

Land West of Wainhouse Corner

St. Gennys, Bude | Auction Guide Price £140,000 - £150,000
SOLD: £140,000



A useful block of just over 15.5 acres of pasture land, with excellent access from the adjoining main road. The land is very gently sloping and extremely well fenced.

Holsworthy Farms & Land Agency
Farms@kivells.com | 01409 259547

Farms Sale Agreed

KIVELLS

www.kivells.com

Keymelford Farm Buildings & Land Keymelford, Colebrook, Crediton, Devon



Lot 1 - Agricultural buildings and yard area with land surrounding extending to 0.41 acres.
Guide Price: £150,000

Lot 2 - Agricultural building with concrete pad and land surrounding extending to 0.41 acres.
Guide Price: £135,000

Lot 3 - A small grassland area extending to approximately 0.14 acres. **Guide Price: £25,000**

Exeter Farms & Land Agency
exeter@kivells.com | 01392 252262

Tor Court Farm Torbryan, Newton Abbot



- Four bedroom, Grade II Listed farmhouse
- Stone barns and a modern agricultural building with potential for alternative uses (stp)
- A truly hidden gem located in a peaceful yet accessible location
- Stunning, well-maintained pasture, orchards and woodland
- In all approximately 67.43 acres (27.28 hectares)

Guide Price: £1,210,000

Exeter Farms & Land Department
ian.caunter@kivells.com | 01392 252262

Farms Sale Agreed

KIVELLS

www.kivells.com

Sandenbury
Tregadillett, Launceston



- Smallholding in a lovely rural, yet accessible location
- Three bedroom bungalow (AOC) in need of modernising
- Range of pole barns
- Just over 40 acres of pasture land including some woodland
- A fantastic blank canvas
- EPC: D

Guide Price: £650,000

Holworthy Farms & Land Department
farms@kivells.com | 01409 259547

Sensham Farm
Marhamchurch, Bude



- Substantial modern farmhouse and separate first floor flat, both in need of modernisation
- Range of adaptable farm buildings with stabling
- Set in some 57 acres
- Not far from the North Cornish coast
- EPCs: D and F

Guide Price: £1,600,000

Holworthy Farms & Land Department
farms@kivells.com | 01409 259547

Farms Sale Agreed

KIVELLS

www.kivells.com

East Coombe Farm St. Pinnock, Liskeard



- Three bedroom, two bathroom, three reception room character detached house
- Splendid private location, with far reaching rural views
- Outbuildings with significant potential for alternative uses
- Located in rural East Cornwall between the wide expanses of Bodmin Moor and the South Cornish coastline
- In all 45.50 acres of land and woodland
- EPC: E & D

Guide Price: £900,000

Liskeard Farms & Land Department
liskeard@kivells.com | 01579 345543

Little Clamoak Farm Bere Ferrers, Yelverton

- Four bedroom bungalow (AOC)
- Adaptable range of farm buildings
- Sought after location
- In all approximately 26 acres
- Freehold with vacant possession available
- EPC F

Guide Price: £725,000

Exeter Farms & Land Department
exeter@kivells.com | 01392 252 262



Farms Sale Agreed

KIVELLS

www.kivells.com

Barton Moor
Meshaw, South Molton, Devon



- Three bedroom detached bungalow (AOC)
- Range of modern farm buildings with Class Q Permission for five dwellings
- Desirable and accessible location
- Freehold with vacant possession available
- In all about 4.22 acres
- EPC: 23 Band F

Guide Price: £495,000

Exeter Farms & Land Department
ben.hancock@kivells.com | 01392 252262

Land Sale Agreed

KIVELLS

www.kivells.com

Land off Blackacre Lane

St Columb | Guide Price £150,000 - £155,000



Approx 12.87 acres comprising a single enclosure of gently sloping land currently in a temporary ley. In recent years has been used for arable and vegetable growing purposes.
Liskeard Farms & Land Agency
mark.bunt@kivells.com | 01579 345543

Land at Viverdon Down

St. Mellion, Saltash | Guide Price £465,000



Just under 45 acres of productive pasture land in a very accessible location with lovely far reaching views.
Holsworthy Farms & Land Agency
farms@kivells.com | 01409 259547

Land forming Part Oldsbrim Lot 1

Poundsgate, Newton Abbot | Guide Price £150,000



Approximately 26.19 acres incorporating a block of permanent grassland together with areas of rough grazing.
Exeter Farms & Land Department
ian.caunter@kivells.com | 01392 252262

Land forming Part Oldsbrim Lot 2

Poundsgate, Newton Abbot | Guide Price £75,000



Approximately 12.62 acres incorporating three immaculate field parcels down to permanent pasture.
Exeter Farms & Land Department
ian.caunter@kivells.com | 01392 252262

Land at Upton Farm Lot 1

Delabole | Guide Price £500,000



Approx. 39.59 acres comprising a ring fence block of level or very gently sloping land currently in arable and temporary pastures contained in large, easy working, enclosures.
Liskeard Farms & Land Department
mark.bunt@kivells.com | 01579 345543

Land at Upton Farm Lot 2

Delabole | Guide Price £1,050,000



Approx. 88.25 acres comprising a block of level or very gently sloping land currently in arable and temporary pastures.
Liskeard Farms & Land Department
mark.bunt@kivells.com | 01579 345543

Land Sale Agreed

KIVELLS

www.kivells.com

Land at Chudleighs Barn Holding Liskeard | Guide Price £100,000 - £125,000



Approximately 20.19 acres of pasture and amenity land with pretty stream frontage and some woodland included.
Liskeard Farms & Land Department
mark.bunt@kivells.com | 01579 345543

Land at Huxhill Weare Giffard, Bideford | Guide Price £550,000



A productive run of good quality arable and pasture land in a favoured location extending to approximately 49.38 acres.
Exeter Farms & Land Department
ben.hancock@kivells.com | 07760 887581

Tregovenek Bungalow, Attwood Lane, Pensilva, Liskeard, Cornwall PL14 5QU

Kivells have been instructed to market Tregovenek, a detached three/four bedroom bungalow in a quiet rural location, close to the village of Bolventor, with good size outside space. The bungalow is subject to an Agricultural Occupancy Condition.

Enquiries to W M Bunt BSc MRICS FAAV, Kivells, 7-8 Bay Tree Hill, Liskeard, Cornwall PL14 4BE

Tel: 01579 345543 or 07879 640970. Email: mark.bunt@kivells.com.