

HOLSWORTHY MARKET REPORT

Wednesday 6th May 2026

SALE TIMES

09:45 am - Draft Ewes followed by Finished Lambs

10:30 am - Store Lambs

09.45 am - Calves followed by Stirks

11:00 am - Store Cattle followed by Finished & OTM Cattle

11:00 am - Dairy Cattle



Another good day in the Dairy ring with fresh milk topping at £3600!!

122 PRIME LAMBS, 235 FAT HOGGS , 198 DRAFT EWES AND RAMS

09:45am

Auctioneer: Steve Prouse - 07767 895366

Ryan Walter - 07534 166251

PRIME LAMBS

A much faster trade for all new season lambs and a lot more could have been sold as buyer orders were left unfulfilled. The young sappy lambs very much in demand, top being 465ppk for a pen of 43kgs at £200 from Mike Hill of Bideford who realised 461ppk for 43.2kgs at £199. Chris Ham and Daughters saw their 42.4kgs realise 455ppk to £193 and Mike & Chutney Watkins of Torrington made 454ppk for their 41.2kgs at £187. Several pens of lambs to £198 and over to a top of £201 again sold by Chris Ham and Daughters of Frithelstock.

MORE LAMBS WANTED PLEASE!!

WEIGHT	TOP		AVERAGE	
	Per head	P/Kg TLW	Per head	P/Kg TLW
LAMBS				
32.1-39	-	-	-	-
39.1-45.5	200	465	188	443.7
45.6-52	201	430	200.10	428.5
52+	-	-	-	-
Overall	201	465	194	443.7
EWES				
Light	166		144	
Heavy	198		175	
Rams				

FAT HOGGS

The hogs keep on coming but today there was a lot of producers tidying up for the season. The well fleshed hogs still a very strong trade selling to 418ppk for 44kgs at £184 from Mr S May of Week St Mary. Mr R Squire of Slade Farm, Honeychurch made 417ppk for his 46kgs to £192 and top on the day was £192 from 4 different vendors.

DRAFT EWES

Larger entry and a very fast trade from start to finish, top on the day was £198 for Suffolk x from Mr A Lee of Bratton Clovelly. Mr Geoff May of Instow saw Texel x ewes to £193 and mules topped at £186 again sold by Mr A Lee.

COUPLES 45 EWES & 64 LAMBS

Smaller entry and a strong trade, Messrs Ravenhill-White of Whey Park, Umberleigh topped the day at £415 for Zwartble doubles and £355 for their singles. Mule hogg singles to £302 and Suffolk x hogg singles to £292 all sold by Henry Banbury of Idedesleigh.

FURTHER ENTRIES PLEASE TO STEVE PROUSE 07767895366 OR RYAN WALTER ON 07534 166251








Penbode
Farm Vets Since 1840

Dairy, Beef and Sheep Clubs
Data Analysis

Competitively priced farm medicines
Live stock fertility testing and advice

Vet Tech services
Disease Prevention

Holsworthy
Stratton
Bradworthy
Camelford

www.penbodevets.co.uk

488 CALVES – 09.45 am

Auctioneers: Tim Kivell – 07788 281900

Sam Hutchings – 07553 307293

MILK CALVES

A busy day in the calf department witnessed another flying trade with 73 bulls over £600 and 27 heifers over £600. Top of the day was

£760 on 5 occasions. Firstly for an eye catching Charolais bull from the Wearing Family, Tavistock. Other well put together Charolais at £702, £672 LJ Goaman and Sons and £665 for RW & JR Finnimore and Son. £760 was top of the Blue bulls for a trio of strong sorts in from Parker and Burnett, Tiverton, others £740 for RWH Dilling, Highampton, £740 Stephen and Karen Kendall, Bodmin, £715 and £705 for SG & MR Ley, Sutcombe, £700 Henscott Barton Ltd, £690 for Bradley Farming Ltd, £685 for R

MILK CALVES						
BREED	BULLS			HEIFERS		
	No	Top	Ave	No	Top	Ave
A. Angus	78	760	515	60	600	378
Limousin x	14	715	559	20	780	565
British Blue	83	760	592	74	790	546
Hereford x	11	715	485	26	600	408
Charolais x	13	760	553	8	500	430
Friesian	11	270	215	-	-	-
Simmental	2	690	612	3	535	501
Welsh Black	3	450	364	5	348	316

Veale, Halwill, £668 B & N Davey and £660 Dallyns Dairy. Angus bulls also hit £760 for Stephen and Karen Kendall, £740 for a strong run from Parker and Burnett, £650 AJ & PE Nancekivell, £640 for Messrs Kirk & Son, £620 RAS Johns & Partners, £595 Trenwood Farming Ltd and £592 R Veale with 78 Angus bulls averaging a lively £515. Strong Hereford bulls drew £715 RWH Dilling with others £695, £665 Henscott Barton Ltd with younger sorts to £520 (x2) for VWR Raffe & Sons. A large offering of Limousin bulls which reached £715 Henscott Barton Ltd, £650 AJ & PE Nancekivell and a fantastic run in from TWB Hookway & Partners reached £645, £640 and £590. Heifers on milk soared up to £790 for a powerful Blue heifer in from RWH Dilling, £750, £715 and £710 Stephen and Karen Kendall, £700 Parker and Burnett, £660 Bradley Farming Ltd, £650 Henscott Barton Ltd, £620 Dave Johns, Washaway, £610 Geoff Bond, Langtree, £605 for Stephen Kirk & Son, £600 Dallyns Dairy. A large run of Limousin heifers sold well at £780, £690, £660, £655, £650 and £580 all from TWB Hookway with further strong Limousin heifers to £685 (x2) and £640 Henscott Barton Ltd, £572 AJ & PE Nancekivell, £525 LJ Goaman & Sons. Hereford heifers attained £600 RWH Dilling, £550 Henscott Barton Ltd and £470 for an eye catching red heifer from TN & M Morrow, Laddock. 60 Angus heifers reached £600 Stephen and Karen Kendall, £595 Parker and Burnett, £595 Stephen Kirk & Son, £525 Rob Veale £520 MR & KL Cleave & Son and £498 Jones Trelay Ltd. Simmental heifers £535 and £530 for WE Organic Dairies. Followed by Charolais heifers to £500 for LJ Goaman & Sons.

DAIRY SIRED BULLS

A neat Montbeliarde bull returned at £440 (21 days old) in from AJ & JJ Tucker & Son, Stibb Cross. A pair of Fleckvieh bulls being only very young sold well to £290 from Freddie Francis, East Putford. Followed by Friesian bulls which reached £270 PJ Wickett & Son, £245 RW & JR Finnimore and Son, £242 and £240 for AJ & JA Heard, Hartland, £230 (x2) for Rachel Poole and £220 for both Dave Johns and Trenwood Farming Ltd.

WEANED CALVES

A fantastic show of weaned calves yarded which sold to a top of £950 (5m) for a superb pair of Blue steers in from Holland Partnership of Warkleigh who sold others to £880, £860 and £855 (5m). A single Hereford steer from the same farm and the same age to £800. Blue heifers sold away to £795 for CL & MA Stevens, Woolsery and more to £785 for Holland Partnership (5m).

260 STORE CATTLE – 11:00am
Auctioneer: David Kivell - 07899 960272

Another good entry this week with several stronger forward types on offer and sold extremely well up perhaps £100 on last week. A cracking run of 19-20mth well fleshed cattle from Messrs J & ML Chamberlain of Shebbear topped at £2090 for a British Blue other 22mth British Blues from Messrs G Daniel & Son of North Tamerton to £1960(5). 18mth Charolais steers from Messrs CT Banbury & Sons of Lifton to £1940 (4) others to £1900 (3) and Charolais from Messrs H & M Thorne & Sons of Umberleigh to £1900 (2) who also sold 19mth Limousins to £1920. Native steers to £2030 for 4 19mth Aberdeen Angus from Messrs J & ML Chamberlain of Shebbear other 16mth Aberdeen Angus steers from Messrs N & B Trewin of Bideford to £1910 (4) whose second bunch sold well at £1880 (5). 16mth heifers sold well with a cracking long British Blue from Messrs RWH Dilling of Highampton topping at £1290 and Charolais heifers from Messrs CT Banbury & Sons at £1870 and £1740 (4). 17mth old natives to £1900 for 3 well fleshed Aberdeen Angus 20mths from Messrs J & ML Chamberlain and Holstein steers to £1890 for 4 from again Messrs J & ML Chamberlain (21mth). Friesian heifers to £1670 for a 32mth heifer in from Messrs RWH Dilling of Beaworthy.

YOUNGER CATTLE

Younger stores sold to a firm trade, top being £1720 for 2 real South Devon steers only 9mths from Mrs R Dennis of Northlew, other young 12mth Limousin steers from Messrs AJ & SM Quance of Shebbear. 12-14mth Dairy x steers to £1330 for a 14mth Aberdeen Angus from Mr RG Stevens of Hartland and 12mth British Blue steers from the same farm to £1480. British Blue heifers selling well at £1290 and 12mth Limousin steers from Messrs WJ Wooldridge & Son of Putford to £1530, Aberdeen Angus steers to £1520 and 8 Limousin heifers (13mths) to £1460. Young 8-9mth Aberdeen Angus from Messrs Ranches Ltd of Bridestow to £1250 (8) others at £1120 and 8mth heifers to £1090.

To book in stores or arrange an on-farm valuation, call: Alec Shadrick 07767 896136, Charlie Kivell 07794 000325 or Holsworthy Office 01409 25327

f @KivellsProperty

KIVELLS
www.kivells.com

Your **Development Land and Planning Team** here at Kivells have housebuilders and developers who are interested in the right sites - from small family run builders who are looking for just 10 plots to large national housebuilders who want sites for 100 plus houses.

If you own land on the edge of a large village or town with good access and road frontage, we would be delighted to chat with you about your land and if there is a chance of planning for housing development in the future. With the recent reforms to the planning system, this could be an opportunity to add value to your land that could work harder for you.



Contact your Development Land & Planning Team today to discuss your options.



Oliver Keates BSc (Hons)
Dip TP, MRTPI
Head of Development Land
and Planning Services
07554 060370



Mark Bromell BSc (Hons)
MRICS FAAV FLAA
Director
07966 430001



Mark Bunt
BSc MRICS FAAV
Director
07879 640970



Simon Alford
Director
07789 980203



Thomas Rattray
BSc (Hons) MRICS FAAV
Director
07813 016804



Claire Quick
BSc (Hons) MRICS FAAV
Rural Chartered Surveyor
07789 980204



Ian Caunter BSc (Hons)
MRICS FAAV FLAA
Rural Chartered Surveyor
07813 068935



Sam Turner
MNAEA
Director
07951 240305



Daniel Stokes
MNAEA
Director
07581 006203

120 DAIRY CATTLE - 11.00 am
 Auctioneers: Mark Bromell - 07966 430001
 Mark Davis - 07773 371774

WEEKLY MARKET	Top	Ave
Freshly Calved Heifers	3400	2518
Freshly Calved Cows	3600	3060
All Freshly Calved Holstein Friesian Cows and Heifers	3600	2632
British Friesian and Crossbred Cows and Heifers	2400	2002
In Calf Heifers	3200	2333
Bulling Heifers	1520	1416

Today's dairy sale saw another strong trade with all types of dairy cattle forward seeing great demand both around the ring and on MartEye.

Topping the sale at £3600 was a 2nd calving cow 'Maymor Sidekick Precious 3' yielding 53Kgs on behalf of Messrs TN & M Morrow of Truro. The same vendor also sold another 2nd calver 'Maymor Rubels Rose 2 GP81' sell to £3400 with other cows realising £3000. Heifers also saw a flying trade topping at £3400 for 'Maymor Solarpower Cutie 4' with 'Maymor Solarpower Midnight 3' selling at £3000. The consignment on behalf of the Morrow Family averaged a very impressive £2913. Robert & Faye Wills of Hawksridge Ltd sold fresh heifers to £3100 & £3000 with crossbred cows topping at £3000 for a 3rd calving Norwegian Red X cow on behalf of Martin Dairy Ltd of Bodmin.

In calf heifers saw a tremendous trade and were well sought after with heifers topping at £3200 for a heifer due July/August on behalf of Messrs CW & MW Eddy of Truro. Messrs Eddy also sold heifers to £3100, £2900, £2800, £2750, £2550 (x2), £2400 with their consignment averaging £2453. Mr MJ Sandercock of Launceston topped at £2500 (x2) for heifers due July-September with others selling to £2400, £2250 and £2200 and his consignment averaging £2181.

Today's sale saw a good entry of bulling heifers which met strong demand topping at £1520 for a group of 6 well-farmed and well-grown heifers on behalf of W Marsh & Son of St Austell. Messrs DP & CE Martin of Bude continued their dispersal with a consignment of British Friesian X heifers which topped at £1500 (7) with others selling to £1460 (7) and £1420 (7).

FORTHCOMING DAIRY SALES:

**TUESDAY 12 MAY – EXETER LIVESTOCK CENTRE
 DISPERSAL SALE OF 338 SPRING CALVING FRIESIAN COWS & HEIFERS**

On behalf of Lynch Farms Ltd, Yellowford Farm, Thorverton removed to Exeter Livestock Centre for convenience of sale. Comprising 239 In Milk Cows and Heifers, 49 Bulling Heifers and 50 'a' number Heifer Calves. Cubicles and herringbone parlour milked. NMR Herd Average - 7218kgs 4.25%BF 3.41%PTN the average cell count for the cows in the sale is cc94. BVD, Lepto & IBR vaccinated and Johnes screened.



HOLSWORTHY MARKET HEALTH HUB

Your Local Farming Health Hub at Holsworthy Livestock Market



Market Nurse

- FREE service offering clinical assessment and referrals - no appointment needed!
- Every Wednesday - 8am-10am/12pm-4pm - Penbode Hut

Healthcare Assistant

- Providing mini-health checks e.g. blood pressure, blood sugar, BMI
- 3rd Wednesday of the month - Market Café

Community Navigator

- Connecting you to local organisations and support
- 2nd Wednesday each month - Market Café/Kivells Mobile Auction Office

Find us on Facebook @
Holsworthy Market Health Hub



LEVEL UP YOUR FARMING SKILLS WITH TORCH VETS!

Ready to gain hands-on expertise and stay ahead in the farming? Join our Torch Farm Skills Courses - designed to empower you with practical knowledge, from animal health to farm management and everything in between!

Why join?

- Industry-leading experts
- Tailored, interactive sessions held in small groups for maximum tuition time.
- Skills to boost your farm's productivity
- With courses in AI, Foot trimming, Mastering Medicines, calf rearing, Udder health, Lambing courses and so much more there is something for everyone whether you are new to the industry or fancy updating your knowledge!

Don't miss out on this opportunity to invest in your future.

Register your interest today for 2025 dates by emailing events@torchvets.com



Independent vets, dedicated care

Bideford
01237 870456

Holsworthy
01409 331007

South Molton
01769 610000

Ilfracombe
01271 879516



torchfarmvets.com
info@torchfarmvets.com

2026 SALE DATES



Monthly Live & Online Collective Sales
of Machinery, Vehicles & Implements

Holsworthy Market

SATURDAY 7TH FEBRUARY

SATURDAY 7TH MARCH

SATURDAY 11TH APRIL

SATURDAY 9TH MAY

SATURDAY 13TH JUNE

SATURDAY 4TH JULY

SATURDAY 1ST AUGUST

SATURDAY 5TH SEPTEMBER

SATURDAY 3RD OCTOBER

SATURDAY 7TH NOVEMBER

SATURDAY 5TH DECEMBER

See our calendar for
full list of events



In addition to on-farm sales held throughout the year covering the whole of the South West

See our website for more info!

WWW.KIVELLS.COM | CALL: 01409 253253 | EMAIL: MACHINERY@KIVELLS.COM

KIVELLSMACHINERY.MARTEYE.IE

LARK PLANT HIRE LTD

PLANT HIRE, HAULAGE & AGRICULTURAL
CONTRACTORS



FORAGING SERVICES

ALSO AVAILABLE
AS REQUIRED

Triple Mowers
Double Mowers
Tedding
50ft Rake
30 ft Rake
4 Silage Trailers
Buckrake
Loading Shovel



LIME SPREADING

Two types of lime
and sea sand for
your
spreading
requirements

FREE soil testing!



OVERSEEDING

For all herbal ley
overseeding, grass,
rape,
wild bird seed and
cover crops



All available for 2024 Season! Email: office@larkplant.co.uk

Call Office: 01409 211214

Ian: 07939 538902 or Rob: 07854 362450

Market Prices

Mart Customers get Daily Prices for free

Sign up or upgrade
your plan with your
mart account
number* for market
prices 12pm & 8pm
daily, for free.

*Usually found on your sales
invoice or statement.

marketprices.laa.co.uk



Market Prices

The screenshot shows the 'Market Prices' app interface. At the top, there's a header with the LAA logo, the text 'Market Prices', a user profile icon, and a menu icon. Below the header is a 'Filters' button. The main content is a table with a light green header for 'Old Season Lambs 12/03/24'. The table has columns for 'Number' and 'Price p/kg'. The rows list various lamb categories and their corresponding counts and prices. A 'Total' row is at the bottom of the table. Below the table, there's a section for 'Cull Ewes' with a 'Total' label.

Old Season Lambs 12/03/24		Total	
	Number	Price p/kg	
Super Light (17-25.4kg)	121	253.7	
Light (25.5-32kg)	934	317.4	
Standard (32.1-39kg)	4273	365.9	
Medium (39.1-45.5kg)	10207	391.8	
Heavy (45.6-52kg)	8351	390.0	
Other (over 52kg)	2947	377.6	
SQQ (25.5-45.5kg)	15414	380.1	
Total	26833	382.4	

Cull Ewes
Total



Renew your VAN Number

EU legislation requires a Veterinary Attestation Number (VAN) or Farm Assurance status to sell livestock for slaughter for export outside of the UK.

VAN numbers expire every 12 months
Don't forget to renew.

Speak to your local Veterinary Practise to renew.

Share your new VAN number with your mart.

ONE.LIVE.HUB



Rolstone Bungalow Morchard Bishop, Crediton

- A wonderfully presented and immaculate four bedroom Bungalow, subject to an Agricultural Occupancy Condition (AOC)
- Adjacent Workshop and Office Unit
- A useful Agricultural Building
- Well maintained productive Pasture Land
- In all totalling approximately 10.74 acres (4.34 hectares)
- EPC: C

Guide Price: £925,000

Exeter Farms & Land Department
exeter@kivells.com | 01392 252262



Farms For Sale

KIVELLS

www.kivells.com

Little Clamoak Farm Bere Ferrers, Yelverton

- A highly private and well located residential farm 4 bedroom dwelling, subject to AOC
- Adaptable range of farm buildings
- Productive run of land extending to just over 26 acres in all
- Sought after location on the Bere Peninsula overlooking the River Tamar
- Freehold with vacant possession available
- EPC: F

Guide Price: £725,000

Exeter Farms & Land Department
exeter@kivells.com | 01392 252262



Farms For Sale

KIVELLS

www.kivells.com

Holdstrong Farmhouse Coryton, Okehampton

- A delightful 5 bedroom 17th Century Devon Longhouse
- Situated in a beautiful rural setting on the edge of the Dartmoor National Park
- Superb views
- Stabling and further outbuildings
- Pond
- Coppice
- In all about 15.87 acres
- Freehold with vacant possession available
- EPC: E

Guide Price: £850,000

Exeter Farms & Land Department
exeter@kivells.com | 01392 252262



Farms For Sale

KIVELLS

www.kivells.com

Puddaven Farm North Bovey, Newton Abbot

- Immaculate Farmhouse
- Stunning two bedroom Holiday Cottage
- Outbuildings and stabling
- Outdoor equine menage
- Well-maintained pasture land
- Versatile lifestyle property
- Far reaching views
- In all totalling approximately 32.35 acres (13.09 hectares)
- EPC: E & D

Guide Price: £1,695,000

Exeter Farms & Land Department
exeter@kivells.com | 01392 252262



Farms For Sale

KIVELLS

www.kivells.com

Oxenpark Farm Hersham, Bude

- Wonderful setting with far reaching views over Bude Bay and the North Cornish coast.
- Three bedroom farmhouse and four further cottages
- Superb range of outbuildings suitable for a variety of uses
- In all about 16.18 acres with further land available by separate negotiation.
- Freehold
- Available as a whole or in three lots
- EPC: D, C, C, C & D

Lot 1: Three bedroom farmhouse, two holiday cottages, one further cottage and a lodge. Range of adaptable farm buildings, income generating wind turbine and just over 16 acres.
Guide Price: £1,395,000

Lot 2: A useful block of 45½ acres of pasture and arable land including 3 acres of mature woodland.
Guide Price: £515,000

Lot 3: A single gently sloping pasture field extending to 6.34 acres.
Guide Price: £85,000

Guide Price (as a whole): £1,995,000

Holsworthy Farms & Land Department
farms@kivells.com | 01409 259547



Farms For Sale

KIVELLS

www.kivells.com

Trehere Farm Trewidland, Liskeard

- Substantial four bedroom (all en-suite) modern house enjoying extensive country views
- Range of buildings currently comprising a livery yard with potential for alternative uses
- Approximately 36.51 acres of pasture, amenity woodland and a sand school
- Wonderful rural location yet conveniently situated close to several villages and the town of Liskeard
- EPC: D

Guide Price: £995,000

Liskeard Farms & Land Department
mark.bunt@kivells.com | 01579 345543



Farms For Sale

KIVELLS

www.kivells.com

Barton Moor Meshaw, South Molton, Devon

- Three bedroom detached bungalow (AOC)
- Range of modern farm buildings with Class Q Permission for five dwellings
- Desirable and accessible location
- Freehold with vacant possession available
- In all about 4.22 acres
- EPC: 23 Band F

Guide Price: £495,000

Exeter Farms & Land Department
ben.hancock@kivells.com | 01392 252262



Farms For Sale

KIVELLS

www.kivells.com

Landabethick Blisland, Bodmin

- Charming, 6 bedroom detached farmhouse
- Excellent range of traditional farm buildings suitable for a variety of uses
- In all about 77 acres comprising a combination of good agricultural land and woodland
- Parking, garaging and workshop space
- Unrivalled, private position at the end of a private drive
- Freehold with vacant possession available
- EPC: D

Guide Price: £1,350,000

Exeter Farms & Land Department
ben.hancock@kivells.com | 01392 252262



Farms For Sale

KIVELLS

www.kivells.com

Great Huish Farm Tedburn St. Mary Exeter

- Grade II Listed detached four bedroom house with three reception rooms
- Two further cottages providing income generation or multi-generation living
- Ring Fenced Farm
- Range of modern and traditional farm buildings
- Development opportunities with some planning consent in place
- Easy access to the A30 & M5
- In all about 8.92 acres of agricultural land with further land available by separate negotiation.
- EPC: C

Guide Price: £1,395,000

Exeter Farms & Land Department
exeter@kivells.com | 01392 252262



Farms For Sale

KIVELLS

www.kivells.com

West Burrow Farm Bratton Clovelly, Okehampton

A quietly set rural small holding offering huge potential.

- Grade II* Listed thatched farmhouse in need of modernisation.
- 3 beds, 2 receptions.
- Two adjoining traditional barns.
- Land and woodland
- EPC: Exempt as a listed property

Guide Price: £645,000

Holsworthy Farms & Land Department
farms@kivells.com | 01409 259547



Farms For Sale

KIVELLS

www.kivells.com

Fern Hill Farm Mount, Bodmin

- Farm with significant development potential
- Range of agricultural and equestrian buildings
- 60.29 acres of land including productive pasture
- Two bedroom lodge
- Planning for farm dwelling and residential caravan
- Located in a super rural location with far reaching valley views
- Freehold with vacant possession upon completion

Guide Price: £1,000,000

Liskeard Farms & Land Department
mark.bunt@kivells.com | 01579 345543



Development Site For Sale

KIVELLS

www.kivells.com

Development Site at Lower Newton Farm Zeal Monachorum, Crediton, Devon

- Valuable residential development opportunity
- Range of agricultural buildings with planning permission for demolition and creation of three new build, detached four and three bedroom dwellings
- Potential under extension of Permitted Development Rights for retention and conversion of the existing buildings (Clarkson's Law - Maximum 10 dwellings), subject to planning
- Additional land available

Guide Price: £450,000

Exeter Farms & Land Department
simon.alford@kivells.com | 01392 252262



Aerial view looking north west

Land For Sale

KIVELLS

www.kivells.com

Land At Trevillies

St. Keyne, Liskeard | Guide Price £375,000 -



Approximately 45.64 acres of productive arable/pasture land and amenity woodland with mains water connected. Freehold with vacant possession upon completion.

Liskeard Farms & Land Department
mark.bunt@kivells.com | 01579 345543

Land at Stoke Canon

Exeter, Devon | Offers in Excess of £375,000

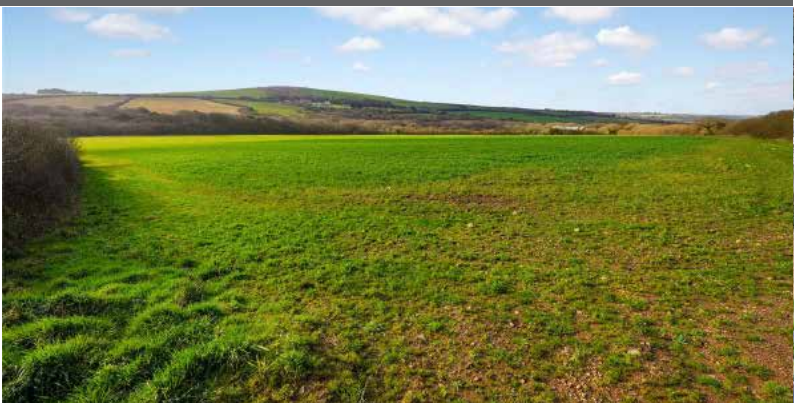


A highly productive run of level arable and pastureland with livestock handling pens extending to just under 46 acres.

Exeter Farms & Land Department
simon.alford@kivells.com | 01392 252262

Land at Criftoe Farm

Tregonetha | Guide Price £675,000 - £700,000



Approximately 64.98 acres of quality cropping land and amenity woodland and a useful modern farm building (with potential for alternative uses, subject to planning).

Liskeard Farms & Land Department
mark.bunt@kivells.com | 01579 345543

Land Off Yorke Road

Dartmouth | Guide Price £195,000



Approximately 12.26 acres in two separate field parcels both down to permanent grassland, previously grazed with livestock.

Exeter Farms & Land Department
exeter@kivells.com | 01392 252262

Land at Polskeys Farm

Roche, St. Austell | Guide Price £495,000



Approximately 59.18 acres of pasture and conservation land accessible off a quiet parish road with mains water connected, a useful livestock building and yard.

Liskeard Farms & Land Department
mark.bunt@kivells.com | 01579 345543

Land at Four Beeches Farm

Sourton, Okehampton | Guide Price £224,000



Approximately 26.25 acres of productive pasture land with easy access to the A386. Suitable for amenity, equestrian and traditional farming.

Exeter Farms & Land Department
exeter@kivells.com | 01392 252262

Land & Buildings at Horwood Horwood, Bideford



A fantastic block of just over 166 ½ acres of productive arable land and a useful range of modern agricultural buildings. **Available in two lots.**

- **LOT 1:** Just over 132 acres of arable land with a range of modern and adaptable farm buildings.
Guide Price: £1,600,000
- **LOT 2:** Circa 34 ½ acres of arable land in a single level field.
Guide Price: £400,000

Holsworthy Farms & Land Agency
farms@kivells.com | 01409 259547

Land for Auction

Wednesday 27th May, 7.00pm

Venue: Lifton Strawberry Fields, Lifton, Devon PL16 0DE

KIVELLS

www.kivells.com

Penloe Field

Woolley, Bude | Auction Guide Price £65,000 - £75,000
For sale by public auction - Wednesday 27th May



Approximately 5.59 acres in a quiet rural setting with lovely views and a useful open sided storage building - 27' x 15' (8.23m x 4.57m) with a rain water harvest tank to one side.

Holsworthy Farms & Land Agency
Farms@kivells.com | 01409 259547

Land at Ugworthy

Chilsworthy, Holsworthy | Auction Guide Price £45,000 - £50,000
For sale by public auction - Wednesday 27th May



Extending to some 5.67 acres, the Land at Ugworthy comprises a mainly level pasture field with natural hedge bank boundaries and a small corrugated sheet clad shed (in poor repair) and an ancient burial ground.

Holsworthy Farms & Land Agency
Farms@kivells.com | 01409 259547

Land at Milton Damarel

Holsworthy | Auction Guide Price £20,000
For sale by public auction - Wednesday 27th May



This pretty 2.42 acre field comprises a mainly level paddock which benefits from excellent access from the adjoining main road on its northern boundary. The land would be suitable for amenity purposes, keeping livestock or ponies.

Holsworthy Farms & Land Agency
Farms@kivells.com | 01409 259547

Land at Broad Parkham

Parkham, Bidford I | Auction Guide Price £75,000 - £85,000
For sale by public auction - Wednesday 27th May



Some 8.50 acres benefiting from road frontage and excellent access. The land comprises a very gently sloping pasture field which is enclosed within natural hedge banks.

Holsworthy Farms & Land Agency
Farms@kivells.com | 01409 259547

Land West of Wainhouse Corner

St. Gennys, Bude | Auction Guide Price £140,000 - £150,000
For sale by public auction - Wednesday 27th May



A useful block of just over 15.5 acres of pasture land, with excellent access from the adjoining main road. The land is very gently sloping and extremely well fenced.

Holsworthy Farms & Land Agency
Farms@kivells.com | 01409 259547

Land at Furzedon Field

Trewidland, Liskeard | Auction Guide Price £110,000 - £115,000
For sale by public auction - Wednesday 27th May



Approximately 13.80 acres of pasture land in a ring fence block with a woodland stream boundary and fringe and mains water connected to three troughs.

Liskeard Farms & Land Agency
mark.bunt@kivells.com | 01579 345543

Land for Auction

Wednesday 27th May, 7.00pm

Venue: Lifton Strawberry Fields, Lifton, Devon PL16 0DE

KIVELLS

www.kivells.com

Land at St Keyne

Liskeard | Auction Guide Price £5,000 - £10,000

For sale by public auction - Wednesday 27th May



Approximately 0.40 acres of woodland and amenity land accessible off a quiet parish road, in a picturesque valley location with a woodland stream running through.

Liskeard Farms & Land Agency

mark.bunt@kivells.com | 01579 345543

Land at Kelynack

St. Just, Penzance | Auction Guide Price £130,000

For sale by public auction - Wednesday 27th May



An excellent opportunity to purchase a 13.54 acre block of predominantly level agricultural land in a superb position, just inland from the West Cornish coastline.

Holsworthy Farms & Land Agency

Farms@kivells.com | 01409 259547

2026 Auction Dates

Wednesday 27th May

Wednesday 24th June

Wednesday 29th July

Wednesday 2nd September

Wednesday 7th October

Wednesday 11th November

Thinking of selling by auction? Contact our experienced team today for a **FREE** no obligation auction appraisal.

www.kivells.com

Previous Auction Results

Wednesday 22nd April, 7.00pm

KIVELLS

www.kivells.com

Trefuge Bungalow Coads Green, Launceston, Cornwall

- For sale by Public Auction on Wednesday 22nd April, 7.00pm at Lifton Strawberry Fields, Lifton, Devon PL16 0DH
- Three bedroom bungalow of non traditional construction and in need of updating
- Set in just over 5 acres of gently sloping pasture
- Useful Nissen hut storage shed
- Lovely quiet rural setting with superb moorland views
- EPC = E (46)

Auction Guide Price: £250,000
SOLD: £358,000

Holsworthy Farms & Land Department
farms@kivells.com | 01409 259547



Previous Auction Results

Wednesday 22nd April, 7.00pm

KIVELLS

www.kivells.com

Land & Yard known as Tall Trees

Kit Hill, Callington | Auction Guide Price £25,000

SOLD: £56,000



A great opportunity to acquire a yard, building and 1¼ acres in need of upgrading. Road frontage and good access.

[Holsworthy Farms & Land Agency](mailto:Farms@kivells.com)
Farms@kivells.com | 01409 259547

Land at Sladelands Farm

Botus Fleming, | Auction Guide Price £130,000 - £140,000

SOLD: £140,000



Approximately 9.95 acres of pasture, amenity and woodland and a range of buildings currently providing a stable yard. The land is accessible off a quiet parish road and has mains electricity and mains water available.

[Liskeard Farms & Land Agency](mailto:mark.bunt@kivells.com)
mark.bunt@kivells.com | 01579 345543

Land lying north of The Pastures

Bratton Clovelly | Auction Guide Price £50,000 - £75,000

SOLD: £68,000



2.11 acres of pasture land, great for livestock grazing or as a pony paddock. Some long term potential, subject to gaining the necessary planning consents.

[Holsworthy Farms & Land Agency](mailto:Farms@kivells.com)
Farms@kivells.com | 01409 259547

Land & Buildings at Klymiarven

Tintage | Auction Guide Price £175,000 - £195,000

SOLD: £275,000



Approximately 13.25 acres of level pasture land with a small range of buildings and yard. The land is situated in a great location in the village, not far from the North Cornish coast.

[Holsworthy Farms & Land Agency](mailto:Farms@kivells.com)
Farms@kivells.com | 01409 259547

Land at Yonder Park

Ebberley, Torrington | Auction Guide Price £295,000 - £315,000

SOLD: £315,000



A fantastic block of approximately 31.42 acres of arable land, divided into four good sized fields and benefiting from good access from the adjoining parish road and far reaching countryside views.

[Holsworthy Farms & Land Agency](mailto:Farms@kivells.com)
Farms@kivells.com | 01409 259547

Land at Lower Wringworthy

Morval, Looe | Auction Guide Price £90,000 - £95,000

SOLD: £95,000



Approximately 10.09 acres comprising two very gently sloping enclosures of permanent pasture accessible off a quiet parish road. The land has previously been used for livestock grazing and forage conservation purposes.

[Liskeard Farms & Land Agency](mailto:mark.bunt@kivells.com)
mark.bunt@kivells.com | 01579 345543

Farms Sale Agreed

KIVELLS

www.kivells.com

Keymelford Farm Buildings & Land Keymelford, Colebrook, Crediton, Devon



Lot 1 - Agricultural buildings and yard area with land surrounding extending to 0.41 acres.
Guide Price: £150,000

Lot 2 - Agricultural building with concrete pad and land surrounding extending to 0.41 acres.
Guide Price: £135,000

Lot 3 - A small grassland area extending to approximately 0.14 acres. **Guide Price: £25,000**

Exeter Farms & Land Agency
exeter@kivells.com | 01392 252262

Tor Court Farm Torbryan, Newton Abbot



- Four bedroom, Grade II Listed farmhouse
- Stone barns and a modern agricultural building with potential for alternative uses (stp)
- A truly hidden gem located in a peaceful yet accessible location
- Stunning, well-maintained pasture, orchards and woodland
- In all approximately 67.43 acres (27.28 hectares)

Guide Price: £1,210,000

Exeter Farms & Land Department
ian.caunter@kivells.com | 01392 252262

Farms Sale Agreed

KIVELLS

www.kivells.com

Sandenbury
Tregadillett, Launceston



- Smallholding in a lovely rural, yet accessible location
- Three bedroom bungalow (AOC) in need of modernising
- Range of pole barns
- Just over 40 acres of pasture land including some woodland
- A fantastic blank canvas
- EPC: D

Guide Price: £650,000

Holworthy Farms & Land Department
farms@kivells.com | 01409 259547

Sensham Farm
Marhamchurch, Bude



- Substantial modern farmhouse and separate first floor flat, both in need of modernisation
- Range of adaptable farm buildings with stabling
- Set in some 57 acres
- Not far from the North Cornish coast
- EPCs: D and F

Guide Price: £1,600,000

Holworthy Farms & Land Department
farms@kivells.com | 01409 259547

Farms Sale Agreed

KIVELLS

www.kivells.com

Trelissick Farm Sithney, Helston



In a beautiful sheltered setting, an 85 acre stock farm. For sale as a whole or in 3 lots.

LOT 1: Farmhouse, range of modern livestock and storage buildings, traditional stone barns (some with planning for residential development), set in just over 28 acres of land. EPC: E. **Guide Price: £1,300,000**

LOT 2: A super run of gently sloping pasture land extending to some 43½ acres. **Guide Price: £375,000**

LOT 3: Just over 14 acres and a former waterworks building with planning in principal for a dwelling. **Guide Price: £290,000**

Holsworthy Farms & Land Department
farms@kivells.com | 01409 259547

East Coombe Farm St. Pinnock, Liskeard



- Three bedroom, two bathroom, three reception room character detached house
- Splendid private location, with far reaching rural views
- Outbuildings with significant potential for alternative uses
- Located in rural East Cornwall between the wide expanses of Bodmin Moor and the South Cornish coastline
- In all 45.50 acres of land and woodland
- EPC: E & D

Guide Price: £900,000

Liskeard Farms & Land Department
liskeard@kivells.com | 01579 345543

Land Sale Agreed

KIVELLS

www.kivells.com

Land off Blackacre Lane

St Columb | Guide Price £150,000 - £155,000



Approx 12.87 acres comprising a single enclosure of gently sloping land currently in a temporary ley. In recent years has been used for arable and vegetable growing purposes.
Liskeard Farms & Land Agency
mark.bunt@kivells.com | 01579 345543

Land at Viverdon Down

St. Mellion, Saltash | Guide Price £465,000



Just under 45 acres of productive pasture land in a very accessible location with lovely far reaching views.
Holsworthy Farms & Land Agency
farms@kivells.com | 01409 259547

Land forming Part Oldsbrim Lot 1

Poundsgate, Newton Abbot | Guide Price £150,000



Approximately 26.19 acres incorporating a block of permanent grassland together with areas of rough grazing.
Exeter Farms & Land Department
ian.caunter@kivells.com | 01392 252262

Land forming Part Oldsbrim Lot 2

Poundsgate, Newton Abbot | Guide Price £75,000



Approximately 12.62 acres incorporating three immaculate field parcels down to permanent pasture.
Exeter Farms & Land Department
ian.caunter@kivells.com | 01392 252262

Land at Upton Farm Lot 1

Delabole | Guide Price £500,000



Approx. 39.59 acres comprising a ring fence block of level or very gently sloping land currently in arable and temporary pastures contained in large, easy working, enclosures.
Liskeard Farms & Land Department
mark.bunt@kivells.com | 01579 345543

Land at Upton Farm Lot 2

Delabole | Guide Price £1,050,000



Approx. 88.25 acres comprising a block of level or very gently sloping land currently in arable and temporary pastures.
Liskeard Farms & Land Department
mark.bunt@kivells.com | 01579 345543

Land Sale Agreed

KIVELLS

www.kivells.com

Land at Chudleighs Barn Holding Liskeard | Guide Price £100,000 - £125,000



Approximately 20.19 acres of pasture and amenity land with pretty stream frontage and some woodland included.
Liskeard Farms & Land Department
mark.bunt@kivells.com | 01579 345543

Land at Huxhill Weare Giffard, Bideford | Guide Price £550,000



A productive run of good quality arable and pasture land in a favoured location extending to approximately 49.38 acres.
Exeter Farms & Land Department
ben.hancock@kivells.com | 07760 887581

Tregovenek Bungalow, Attwood Lane, Pensilva, Liskeard, Cornwall PL14 5QU

Kivells have been instructed to market Tregovenek, a detached three/four bedroom bungalow in a quiet rural location, close to the village of Bolventor, with good size outside space. The bungalow is subject to an Agricultural Occupancy Condition.

Enquiries to W M Bunt BSc MRICS FAAV, Kivells, 7-8 Bay Tree Hill, Liskeard, Cornwall PL14 4BE

Tel: 01579 345543 or 07879 640970. Email: mark.bunt@kivells.com.