

HOLSWORTHY MARKET REPORT

Wednesday 8th April 2026

EVERY WEDNESDAY

Gates open 6am

SALE TIMES

09:45 am - Draft Ewes followed by Finished Lambs

10:30 am - Store Lambs

09.45 am - Calves followed by Stirks

11:00 am - Store Cattle followed by Finished & OTM Cattle

11:00 am - Dairy Cattle



Top price of the day went to this 16mth old Charolais Steer at £2500

588 FAT HOGGS, 207 DRAFT EWES AND RAMS

09:45am

Auctioneer: Steve Prouse - 07767 895366

Ryan Walter - 07534 166251

Good entry of hogs met a mixed trade with the good meat hogs still very much sought after and a strong trade selling to a top of 420ppk for 45.2kgs at £190 from DW Nancekivell & Son of Heatham, Kilkhampton. Ken and Pat Bird of Crackington Haven made 410ppk for their 44.4kgs at £182 and Victor and Celia Goaman of Higher Clovelly made 410ppk for their 46kgs at £188.50. There were a lot of leaner hogs today which were harder to place, top per head on the day was £195.50 for 3 pens from Steve Cottle of Upcott, Welcombe with 4 other vendors at £195.

WEIGHT	TOP		AVERAGE	
	Per head	P/Kg TLW	Per head	P/Kg TLW
LAMBS				
32.1-39	151.50	388	144	370.2
39.1-45.5	190	420	170.90	390.9
45.6-52	195	410	185.50	381.8
52+	195.50	368	189.95	346.4
Overall	195.50	420	184	390.1
EWES				
Light	205		170	
Heavy	268		231	
Rams	-		-	

53 NEW SEASON LAMBS

A very fast trade for all new season lambs and a lot more could have been sold. Top per kilo on the day was 446ppk for 42.4kgs at £189 from FG Knapman & Partner of North Tawton and Geoffery & Simon Grigg of Weach Barton realised 439ppk for 41.2kgs at £181. 437ppk was met by Sally & Chris Prouse of Court Green Farm, Clawton for 42.4kgs to £186 and also a top per head on the day was £193.50 for 46kgs.

55 STORE HOGGS

The large framed hogs in keen demand, top being £193 from Graham & Hazel Butt of Ashbury Court.

COUPLES 62E & 88L

Another good entry and again a strong trade, doubles to £380 and singles to £295 all sold by David Wickett of Week St Mary.

DRAFT EWES

Again a fantastic trade flying for all breeds and sizes and still more could have been sold. Overall average on the day of everything averaged just under £180, top per head being £268 for a Texel x from Matthew Jones of Holsworthy followed by £266 for a Charollais from Sally and Chris Prouse of Clawton. Suffolk x to £225 from Lovistone Share Farming of Merton, Jacobs to £197 and Hill breeds to £152.

Buyers are requesting that dirty hogs are belly clipped to help us optimise the best prices for your hogs

FURTHER ENTRIES PLEASE TO STEVE PROUSE 07767895366 OR RYAN WALTER ON 07534 1662

348 CALVES – 09.45 am

Auctioneers: *Tim Kivell & Sam Hutchings*

A smaller show of rearing calves but they sold to a livelier trade with the medium and smalls looking extremely well sold with very little under £200

WEANED CALVES

A small run of weaned calves which sold to a top of £920 (7m) given for a single smart Angus steer presented by Bendle and Lintin down from Chittlehampton who sold a further bunch well at £915 (x6 7m). A single Blue steer sold to £785 (5m) in from Geoff Bond of Langtree.

MILK CALVES

Top of the section was £780 given for a very eye catching Blue bull in from Nick and Kate Bowden of Highampton who sold a pair at £760 and another at £740. Other Blue bulls to £760 from Graham Duke of Werrington, £760 also for WJ Hobbs who sold more to £745 (x2) and £740 again from Nickels Farm Partnership down from Barnstaple. Best of the Charolais bulls hit £700 and £685 from the Wearing Family of Tavistock followed by the best of the Angus to £670 for Nick & Kate Bowden, £605 from AJ & JA Heard of Hartland, £595 Dallyns Dairy Ltd of Barnstaple, £540 FC Buse & Co, Wadebridge and also £540 for Jones Trelay Ltd. Hereford bulls sold away to £622 for RW & JR Finnimore, Launceston others £615 and £605 sold by TA & SJ Kempthorne and £570 Diepenbroek Ltd. Limousin bulls parted at £610 for NC & RM Skinner, Halwill and £558 for LJ Goaman & Sons. Heifers on milk sold to a top of £720 for a well put together Blue from WJ Hobbs & Son who sold others well to £690 & £620, more good Blue heifers to £670 Stuart Ley of Sutcombe, £640 for Nick and Kate Bowden, £625 for TA & SJ Kempthorne, £608 for Dave & Dianne Furse, Ashwater. Charolais heifers to £635 for RJ & JR Finnimore who sold another to £500 followed by Limousin heifers to £620 from WJ Hobbs & Son others to £570 from JR Frayne of Launceston. Hereford heifers to £610 on two occasions, firstly for Diepenbroek Farms and secondly Dallyns Dairy Ltd, more £498 Dave & Dianne Furse again, £482 Graham Duke and £450 Andrew Oke of Bradford.

MILK CALVES						
BREED	BULLS			HEIFERS		
	No	Top	Ave	No	Top	Ave
A. Angus	26	670	409	23	495	331
Limousin x	8	610	486	8	620	446
British Blue	75	780	588	63	720	478
Hereford x	43	622	367	22	610	366
Charolais x	7	700	523	10	635	447
Friesian	18	530	235	-	-	-
Simmental	-	-	-	-	-	-
Welsh Black	1	620	620	4	605	582

DAIRY SIRED BULLS

A good entry sold to £530 for a pair of reared sorts in from WJ Hobbs others £486 Martin Heal, Torrington, £290 & £285 for Jones Trelay Ltd with all 18 Friesian bulls averaging £230 ahead.



Dairy, Beef and Sheep Clubs
Data Analysis

Competitively priced farm medicines
Live stock fertility testing and advice

Vet Tech services
Disease Prevention

Holsworthy
Stratton
Bradworthy
Camelford

www.penbodevets.co.uk

400 STORE CATTLE – 11:00am
Auctioneer: David Kivell - 07899 960272

A cracking entry with several consignments of quality cattle on offer, the top this week was £2500 for a tremendous pure bred 16mth Charolais from Mr GW Bowden of Black Torrington who also sold younger 13mth Charolais at £2140. A superb consignment of single suckled steers from Messrs WD & ME Walter of Putford saw a 24mth Limousin top at £2480, other Limousins to £2340, £2300 & £2200 and British Blues from the same farm to £2360. Stronger Dairy x continentals sold well, plenty 18-22mth steers at £2000+, topping at £2100 for 4 British Blues from Messrs PM JM & RP Reed of Milton Dameral. Other British Blues from Mr SW Graham of Bridgerule at £2080 (4) & £2060 for British Blues from 2 vendors, Mr GW Bowden & Mr HR Yelland andn18mth British Blues from Messrs D & E Kirk of Ashwater to £2050(5) & £2030(5). Dairy x Charolais saw keen demand, £2100 was realised for 3 from Messrs WG S & JR Axford of Holsworthy who sold others to £2020 and 2 well fleshed Charolais from Messrs PH JM & RP Reed at £2060 (2). Aberdeen Angus x Friesians sold well topping at £2220 for a 24mth steer from Mr HR Yelland of Clawton. A good run of 17mth Aberdeen Angus steers from Mr R Aston of Pyworthy saw £2160 (4), £2070 (3) and £2020(7) and Hereford steers to £2120 from Mr J Norman of Dolton who also sold others to £1980 with plenty of other strong grazing Herefords at £1900 +. Friesians again sold well to £2020, the top for a steer from Mr HR Yelland of Clawton others to £1930. A run of large Framey Holsteins from Mr HF Chubb of Tetcott to £1720 (5) & £1640 (9).

YOUNGER CATTLE

A good entry this week and the trade seemed stronger than last week. Top this week was £1860 for 10-12mth single suckled Herefords from Mr N Aris of Torrington who also sold other 13mth Herefords to £1720. 12-13mth British Blue steers saw 3 from Meesrs DF & ER James of Halwill at £1700 and a 13mth British Blue again from Mr N Aris to £1700. Aberdeen Angus in demand, a 12mth Aberdeen Angus steer from Messrs WJ Wooldridge & Son of Putford to £1770. A run at 11mth olds from Messrs RW & R Risdon saw 4 steers to £1420 and 10 Aberdeen Angus heifers to £1350. Pure Devon steers 9-12mth from Mr JA Slee of Bideford at £1580(3) and younger 7mth Devon steers from the same farm to £1280. 7mth Devon heifers to £1040 (4) other 7mth single suckled Charolais steers from Mr JP Williams of Yelverton saw 5 at £1320 others to £1300. **MORE YOUNG CATTLE REQUIRED**

To book in stores or arrange an on-farm valuation, call: Alec Shadrick 07767 896136, Charlie Kivell 07794 000325 or Holsworthy Office 01409 25327

LEVEL UP YOUR FARMING SKILLS WITH TORCH VETS!

Ready to gain hands-on expertise and stay ahead in the farming? Join our Torch Farm Skills Courses – designed to empower you with practical knowledge, from animal health to farm management and everything in between!

Why join?

- Industry-leading experts
- Tailored, interactive sessions held in small groups for maximum tuition time.
- Skills to boost your farm's productivity
- With courses in AI, Foot trimming, Mastering Medicines, calf rearing, Udder health, Lambing courses and so much more there is something for everyone whether you are new to the industry or fancy updating your knowledge!

Don't miss out on this opportunity to invest in your future.

Register your interest today for 2025 dates by emailing events@torchvets.com



Independent vets, dedicated care

Bideford
01237 870456

Holsworthy
01409 331007

South Molton
01769 610000

Ilfracombe
01271 879516



torchfarmvets.com
info@torchfarmvets.com

HOLSWORTHY MARKET HEALTH HUB

Your Local Farming Health Hub at Holsworthy Livestock Market



Market Nurse

- FREE service offering clinical assessment and referrals - no appointment needed!
- Every Wednesday - 8am-10am/12pm-4pm - Penbode Hut

Healthcare Assistant

- Providing mini-health checks e.g. blood pressure, blood sugar, BMI
- 3rd Wednesday of the month - Market Café

Find us on Facebook @
Holsworthy Market Health Hub

Community Navigator

- Connecting you to local organisations and support
- 2nd Wednesday each month - Market Café/Kivells Mobile Auction Office



f @KivellsProperty



Your **Development Land and Planning Team** here at Kivells have housebuilders and developers who are interested in the right sites – from small family run builders who are looking for just 10 plots to large national housebuilders who want sites for 100 plus houses.

If you own land on the edge of a large village or town with good access and road frontage, we would be delighted to chat with you about your land and if there is a chance of planning for housing development in the future. With the recent reforms to the planning system, this could be an opportunity to add value to your land that could work harder for you.



Contact your Development Land & Planning Team today to discuss your options.



Oliver Keates BSc (Hons)
Dip TP, MRTPI
Head of Development Land
and Planning Services
07554 060370



Mark Bromell BSc (Hons)
MRICS FAAV FLAA
Director
07966 430001



Mark Bunt
BSc MRICS FAAV
Director
07879 640970



Simon Alford
Director
07789 980203



Thomas Rattray
BSc (Hons) MRICS FAAV
Director
07813 016804



Claire Quick
BSc (Hons) MRICS FAAV
Rural Chartered Surveyor
07789 980204



Ian Caunter BSc (Hons)
MRICS FAAV FLAA
Rural Chartered Surveyor
07813 068935



Sam Turner
MNAEA
Director
07951 240305



Daniel Stokes
MNAEA
Director
07581 006203

2026 SALE DATES



Monthly Live & Online Collective Sales
of Machinery, Vehicles & Implements

Holsworthy Market

SATURDAY 7TH FEBRUARY

SATURDAY 7TH MARCH

SATURDAY 11TH APRIL

SATURDAY 9TH MAY

SATURDAY 13TH JUNE

SATURDAY 4TH JULY

SATURDAY 1ST AUGUST

SATURDAY 5TH SEPTEMBER

SATURDAY 3RD OCTOBER

SATURDAY 7TH NOVEMBER

SATURDAY 5TH DECEMBER

See our calendar for
full list of events



In addition to on-farm sales held throughout the year covering the whole of the South West

See our website for more info!

WWW.KIVELLS.COM | CALL: 01409 253253 | EMAIL: MACHINERY@KIVELLS.COM

KIVELLSMACHINERY.MARTEYE.IE

LARK PLANT HIRE LTD

PLANT HIRE, HAULAGE & AGRICULTURAL
CONTRACTORS



FORAGING SERVICES

ALSO AVAILABLE
AS REQUIRED

Triple Mowers
Double Mowers
Tedding
50ft Rake
30 ft Rake
4 Silage Trailers
Buckrake
Loading Shovel



LIME SPREADING

Two types of lime
and sea sand for
your
spreading
requirements

FREE soil testing!



OVERSEEDING

For all herbal ley
overseeding, grass,
rape,
wild bird seed and
cover crops



All available for 2024 Season! Email: office@larkplant.co.uk

Call Office: 01409 211214

Ian: 07939 538902 or Rob: 07854 362450

Market Prices

Mart Customers get Daily Prices for free

Sign up or upgrade
your plan with your
mart account
number* for market
prices 12pm & 8pm
daily, for free.

*Usually found on your sales
invoice or statement.

marketprices.laa.co.uk



Market Prices

The screenshot shows the 'Market Prices' app interface. At the top, there's a header with the LAA logo, the text 'Market Prices', a user profile icon, and a menu icon. Below the header is a 'Filters' button. The main content is a table with a light green header for 'Old Season Lambs 12/03/24'. The table has columns for 'Number' and 'Price p/kg'. The rows list different lamb categories: Super Light (17-25.4kg), Light (25.5-32kg), Standard (32.1-39kg), Medium (39.1-45.5kg), Heavy (45.6-52kg), Other (over 52kg), and SQQ (25.5-45.5kg). A 'Total' row is at the bottom of this section. Below this, another section for 'Cull Ewes' is partially visible.

Old Season Lambs 12/03/24		Total	
	Number	Price p/kg	
Super Light (17-25.4kg)	121	253.7	
Light (25.5-32kg)	934	317.4	
Standard (32.1-39kg)	4273	365.9	
Medium (39.1-45.5kg)	10207	391.8	
Heavy (45.6-52kg)	8351	390.0	
Other (over 52kg)	2947	377.6	
SQQ (25.5-45.5kg)	15414	380.1	
Total	26833	382.4	

Cull Ewes		Total	



Renew your VAN Number

EU legislation requires a Veterinary Attestation Number (VAN) or Farm Assurance status to sell livestock for slaughter for export outside of the UK.

VAN numbers expire every 12 months
Don't forget to renew.

Speak to your local Veterinary Practise to renew.

Share your new VAN number with your mart.

ONE.LIVE.HUB



East Coombe Farm St. Pinnock, Liskeard

- Three bedroom, two bathroom, three reception room character detached house
- Splendid private location, with far reaching rural views
- Outbuildings with significant potential for alternative uses
- Located in rural East Cornwall between the wide expanses of Bodmin Moor and the South Cornish coastline
- In all 45.50 acres of land and woodland
- EPC: E & D

Guide Price: £900,000

Liskeard Farms & Land Department
liskeard@kivells.com | 01579 345543



Farms For Sale

KIVELLS

www.kivells.com

Puddaven Farm North Bovey, Newton Abbot

- Immaculate Farmhouse
- Stunning two bedroom Holiday Cottage
- Outbuildings and stabling
- Outdoor equine menage
- Well-maintained pasture land
- Versatile lifestyle property
- Far reaching views
- In all totalling approximately 32.35 acres (13.09 hectares)
- EPC: E & D

Guide Price: £1,800,000

Exeter Farms & Land Department
exeter@kivells.com | 01392 252262



Oxenpark Farm Hersham, Bude

- Wonderful setting with far reaching views over Bude Bay and the North Cornish coast.
- Three bedroom farmhouse and four further cottages
- Superb range of outbuildings suitable for a variety of uses
- In all about 16.18 acres with further land available by separate negotiation.
- Freehold
- Available as a whole or in three lots
- EPC: D, C, C, C & D

Lot 1: Three bedroom farmhouse, two holiday cottages, one further cottage and a lodge. Range of adaptable farm buildings, income generating wind turbine and just over 16 acres.

Guide Price: £1,395,000

Lot 2: A useful block of 45½ acres of pasture and arable land including 3 acres of mature woodland.

Guide Price: £515,000

Lot 3: A single gently sloping pasture field extending to 6.34 acres.

Guide Price: £85,000

Guide Price (as a whole): £1,995,000

Holsworthy Farms & Land Department
farms@kivells.com | 01409 259547



Trehere Farm Trewidland, Liskeard

- Substantial four bedroom (all en-suite) modern house enjoying extensive country views
- Range of buildings currently comprising a livery yard with potential for alternative uses
- Approximately 36.51 acres of pasture, amenity woodland and a sand school
- Wonderful rural location yet conveniently situated close to several villages and the town of Liskeard
- EPC: D

Guide Price: £995,000

Liskeard Farms & Land Department
mark.bunt@kivells.com | 01579 345543



Farms For Sale

KIVELLS

www.kivells.com

Barton Moor Meshaw, South Molton, Devon

- Three bedroom detached bungalow (AOC)
- Range of modern farm buildings with Class Q Permission for five dwellings
- Desirable and accessible location
- Freehold with vacant possession available
- In all about 4.22 acres
- EPC: 23 Band F

Guide Price: £495,000

Exeter Farms & Land Department
ben.hancock@kivells.com | 01392 252262



Farms For Sale

KIVELLS

www.kivells.com

Landabethick Blisland, Bodmin

- Charming, 6 bedroom detached farmhouse
- Excellent range of traditional farm buildings suitable for a variety of uses
- In all about 77 acres comprising a combination of good agricultural land and woodland
- Parking, garaging and workshop space
- Unrivalled, private position at the end of a private drive
- Freehold with vacant possession available
- EPC: D

Guide Price: £1,350,000

Exeter Farms & Land Department
ben.hancock@kivells.com | 01392 252262



Great Huish Farm Tedburn St. Mary Exeter

- Grade II Listed detached four bedroom house with three reception rooms
- Two further cottages providing income generation or multi-generation living
- Ring Fenced Farm
- Range of modern and traditional farm buildings
- Development opportunities with some planning consent in place
- Easy access to the A30 & M5
- In all about 8.92 acres of agricultural land with further land available by separate negotiation.
- EPC: C

Guide Price: £1,395,000

Exeter Farms & Land Department
exeter@kivells.com | 01392 252262



Farms For Sale

KIVELLS

www.kivells.com

West Burrow Farm Bratton Clovelly, Okehampton

A quietly set rural small holding offering huge potential.

- Grade II* Listed thatched farmhouse in need of modernisation.
- 3 beds, 2 receptions.
- Two adjoining traditional barns.
- Land and woodland
- EPC: Exempt as a listed property

Guide Price: £645,000

Holsworthy Farms & Land Department
farms@kivells.com | 01409 259547



Farms For Sale

KIVELLS

www.kivells.com

Fern Hill Farm Mount, Bodmin

- Farm with significant development potential
- Range of agricultural and equestrian buildings
- 60.29 acres of land including productive pasture
- Two bedroom lodge
- Planning for farm dwelling and residential caravan
- Located in a super rural location with far reaching valley views
- Freehold with vacant possession upon completion

Guide Price: £1,000,000

Liskeard Farms & Land Department
mark.bunt@kivells.com | 01579 345543



Development Site For Sale

KIVELLS

www.kivells.com

Development Site at Lower Newton Farm Zeal Monachorum, CREDITON, Devon

- Valuable residential development opportunity
- Range of agricultural buildings with planning permission for demolition and creation of three new build, detached four and three bedroom dwellings
- Potential under extension of Permitted Development Rights for retention and conversion of the existing buildings (Clarkson's Law – Maximum 10 dwellings), subject to planning
- Additional land available

Guide Price: £450,000

Exeter Farms & Land Department
simon.alford@kivells.com | 01392 252262



Aerial view looking north west

Farms For Auction

KIVELLS

www.kivells.com

Trefuge Bungalow Coads Green, Launceston, Cornwall

- For sale by Public Auction on Wednesday 22nd April, 7.00pm at Lifton Strawberry Fields, Lifton, Devon PL16 0DH
- Three bedroom bungalow of non traditional construction and in need of updating
- Set in just over 5 acres of gently sloping pasture
- Useful Nissen hut storage shed
- Lovely quiet rural setting with superb moorland views
- EPC = E (46)

Auction Guide Price: £250,000

Holsworthy Farms & Land Department
farms@kivells.com | 01409 259547



Land For Sale

KIVELLS

www.kivells.com

Land At Trevillies

St. Keyne, Liskeard | Guide Price £375,000 - £400,000



Approximately 45.64 acres of productive arable/pasture land and amenity woodland with mains water connected. Freehold with vacant possession upon completion.

Liskeard Farms & Land Department
mark.bunt@kivells.com | 01579 345543

Land at Stoke Canon

Exeter, Devon | Offers in Excess of £375,000

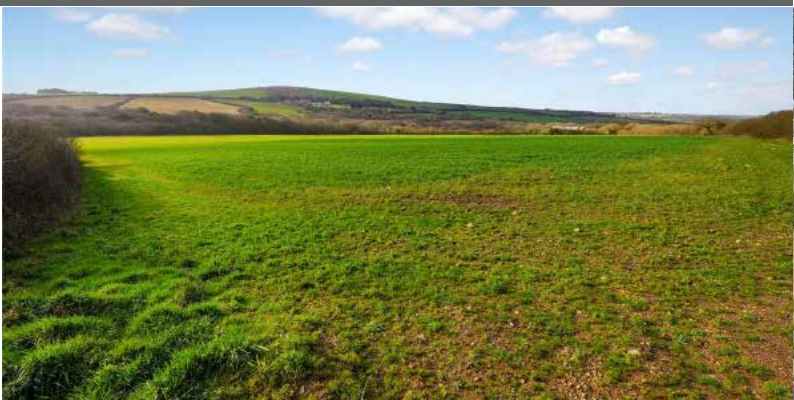


A highly productive run of level arable and pastureland with livestock handling pens extending to just under 46 acres.

Exeter Farms & Land Department
simon.alford@kivells.com | 01392 252262

Land at Criftoe Farm

Tregonetha | Guide Price £675,000 - £700,000



Approximately 64.98 acres of quality cropping land and amenity woodland and a useful modern farm building (with potential for alternative uses, subject to planning).

Liskeard Farms & Land Department
mark.bunt@kivells.com | 01579 345543

Land Off Yorke Road

Dartmouth | Guide Price £195,000



Approximately 12.26 acres in two separate field parcels both down to permanent grassland, previously grazed with livestock.

Exeter Farms & Land Department
exeter@kivells.com | 01392 252262

Land at Huxhill

Weare Giffard, Bideford | Guide Price £550,000



A productive run of good quality arable and pasture land in a favoured location extending to approximately 49.38 acres with two direct road access points.

Exeter Farms & Land Department
ben.hancock@kivells.com | 07760 887581

Land at Four Beeches Farm

Sourton, Okehampton | Guide Price £224,000



Approximately 26.25 acres of productive pasture land with easy access to the A386 and lovely rural views over Dartmoor. Suitable for amenity, equestrian and traditional farming.

Exeter Farms & Land Department
exeter@kivells.com | 01392 252262

Land For Sale

Land at Polskeys Farm

Roche, St. Austell | Guide Price £495,000



Approximately 59.18 acres of pasture and conservation land accessible off a quiet parish road with far reaching views, mains water connected, a useful livestock building and yard.

Liskeard Farms & Land Department
mark.bunt@kivells.com | 01579 345543

Land For Let

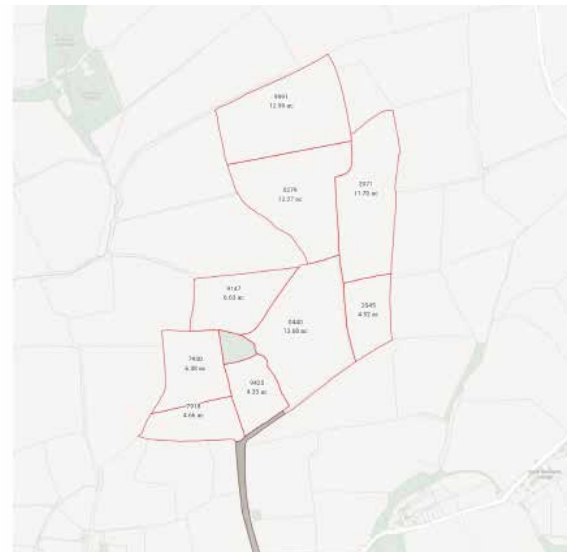
Land at Alsery

Bradworthy, Holsworthy

GRASS KEEP FOR SALE BY INFORMAL TENDER

- Approximately 77.15 acres
- The land is all down to permanent pasture
- No attention given
- Water present
- Access via private lane off the parish road as illustrated in brown on the attached land plan
- Approximately 29.21 acres of newly seeded GS4 leys
- Available from 10th April 2026 to 30th September with cattle, and onto 31st October 2026 with sheep
- Tenders to be submitted by 12 noon on Thursday 2nd April

Holsworthy Farms & Land Department
toby.theobald@kivells.com | 01409 253275



Land at Tutchenor Farm

Patchacott, Beaworthy

GRASS KEEP FOR SALE BY INFORMAL TENDER

- Approximately 86.7 acres available in three lots
- To cut and/or graze with sheep and cattle
- 1st May 2026 to 30th September with cattle, and on to 31st October 2026 with sheep
- Lot 1 - 19.69 acres
- Lot 2 - 28.52 acres
- Lot 3 - 38.49 acres
- Tenders to be submitted no later than 12 noon on Monday 20th April

Holsworthy Farms & Land Department
toby.theobald@kivells.com | 01409 253275



Land for Auction

Wednesday 22nd April 7.00pm

Venue: Lifton Strawberry Fields, Lifton, Devon PL16 0DE

KIVELLS

www.kivells.com

Land at Higher Reedy Mill

Trewidland, Liskeard | Auction Guide Price £45,000 - £50,000
For sale by public auction - Wednesday 22nd April



Approximately 4.39 acres of sloping pasture land accessible off a quiet parish road. The land is likely to be of interest to those with agricultural, small holding, equestrian or general amenity interest.

Liskeard Farms & Land Agency
mark.bunt@kivells.com | 01579 345543

Land at Sladelands Farm

Botus Fleming, Saltash | Auction Guide Price £130,000 - £140,000
For sale by public auction - Wednesday 22nd April



Approximately 9.95 acres of pasture, amenity and woodland and a range of buildings currently providing a stable yard. The land is accessible off a quiet parish road, close to the village of Botus Fleming and has mains electricity and mains water available.

Liskeard Farms & Land Agency
mark.bunt@kivells.com | 01579 345543

Land lying north of The Pastures

Bratton Clovelly | Auction Guide Price £50,000 - £75,000
For sale by public auction - Wednesday 22nd April



Just over 2 acres of pasture land with lovely far reaching views, great for livestock grazing or as a pony paddock. Some long term potential, subject to gaining the necessary planning consents.

Holsworthy Farms & Land Agency
Farms@kivells.com | 01409 259547

Land & Buildings at Klymiarven

Tintagel | Auction Guide Price £175,000 - £195,000
For sale by public auction - Wednesday 22nd April



Approximately 13.25 acres of level pasture land with a small range of buildings and yard. The land is situated in a great location in the village and not far from the stunning North Cornish coast.

Holsworthy Farms & Land Agency
Farms@kivells.com | 01409 259547

Land at Quarry Hill

Petrockstow, Okehampton | Auction Guide Price £125,000 - £150,000
For sale by public auction - Wednesday 22nd April



A useful block of sheltered pasture land, gently sloping and level, extending to some 14.65 acres in all with road frontage.

Holsworthy Farms & Land Agency
Farms@kivells.com | 01409 259547

Land & Yard known as Tall Trees

Kit Hill, Callington | Auction Guide Price £25,000
For sale by public auction - Wednesday 22nd April



A great opportunity to acquire a yard, building and 1 1/4 acres in need of upgrading. Road frontage and good access.

Holsworthy Farms & Land Agency
Farms@kivells.com | 01409 259547

Land for Auction

Wednesday 22nd April 7.00pm

Venue: Lifton Strawberry Fields, Lifton, Devon PL16 0DE

KIVELLS

www.kivells.com

Land at Yonder Park

Ebberley, Torrington | Auction Guide Price £295,000 - £315,000
For sale by public auction - Wednesday 22nd April



A fantastic block of approximately 31.42 acres of arable land, divided in to four good sized fields and benefiting from good access from the adjoining parish road and far reaching countryside views.

Holsworthy Farms & Land Agency
Farms@kivells.com | 01409 259547

Land at Lower Wringworthy

Morval, Looe | Auction Guide Price £90,000 - £95,000
For sale by public auction - Wednesday 22nd April



Approximately 10.09 acres comprising two very gently sloping enclosures of permanent pasture accessible off a quiet parish road. There is some stock fencing noting the land has been used for livestock grazing and forage conservation purposes.

Liskeard Farms & Land Agency
mark.bunt@kivells.com | 01579 345543

Land at Kelynack

St. Just, Penzance | Auction Guide Price £130,000
For sale by public auction - Wednesday 22nd April



An excellent opportunity to purchase a 13.54 acre block of predominantly level agricultural land in a superb position, just inland from the West Cornish coastline.

Holsworthy Farms & Land Agency
Farms@kivells.com | 01409 259547

Land at Aller

Sampford Courtenay, Okehampton | Auction Guide Price £295,000
For sale by public auction - Wednesday 22nd April



A productive run of pasture land in a desirable and accessible location, in all about 34.64 acres. The land is currently laid to pasture and is divided into three enclosures.

Exeter Farms & Land Agency
Exeter@kivells.com | 01392 252262

Land at Four Beeches Farm

Sourton, Okehampton, | Auction Guide Price £215,000
For sale by public auction - Wednesday 22nd April



Approximately 26.25 acres of productive pasture land, suitable for amenity, equestrian and traditional farming, located within easy access to the A386.

Exeter Farms & Land Agency
Exeter@kivells.com | 01392 252262

Previous Auction Results

Wednesday 25th March, 7.00pm

KIVELLS

www.kivells.com

Land at Crylla Farm

Common Moor, Liskeard | Auction Guide Price £275,000 - £285,000
SOLD: £310,000



Approximately 30.81 acres of gently sloping pasture land situated overlooking Siblyback Lake, enjoying extensive views and benefiting from a natural water supply.

Liskeard Farms & Land Agency
mark.bunt@kivells.com | 01579 345543

Land off New Road

Liskeard | Auction Guide Price £15,000 - £20,000
SOLD: £27,000



Approximately 1.63 acres of gently sloping amenity land situated close to New Road, on the periphery of the town of Liskeard and accessible off a main road, leading to a parish road.

Liskeard Farms & Land Agency
mark.bunt@kivells.com | 01579 345543

Farms Sale Agreed

KIVELLS

www.kivells.com

Keymelford Farm Buildings & Land Keymelford, Colebrook, Crediton, Devon



Lot 1 - Agricultural buildings and yard area with land surrounding extending to 0.41 acres.
Guide Price: £150,000

Lot 2 - Agricultural building with concrete pad and land surrounding extending to 0.41 acres.
Guide Price: £135,000

Lot 3 - A small grassland area extending to approximately 0.14 acres. **Guide Price: £25,000**

Exeter Farms & Land Agency
exeter@kivells.com | 01392 252262

Tor Court Farm Torbryan, Newton Abbot



- Four bedroom, Grade II Listed farmhouse
- Stone barns and a modern agricultural building with potential for alternative uses (stp)
- A truly hidden gem located in a peaceful yet accessible location
- Stunning, well-maintained pasture, orchards and woodland
- In all approximately 67.43 acres (27.28 hectares)

Guide Price: £1,210,000

Exeter Farms & Land Department
ian.caunter@kivells.com | 01392 252262

Farms Sale Agreed

KIVELLS

www.kivells.com

Sandenbury
Tregadillett, Launceston



- Smallholding in a lovely rural, yet accessible location
- Three bedroom bungalow (AOC) in need of modernising
- Range of pole barns
- Just over 40 acres of pasture land including some woodland
- A fantastic blank canvas
- EPC: D

Guide Price: £650,000

Holworthy Farms & Land Department
farms@kivells.com | 01409 259547

Higher Norley Farm
Northlew, Okehampton



- Just over 93 acres of productive pasture land
- A useful range of farm buildings including 96 cubicles, loose housing, fodder store and workshop
- Wonderful far reaching views to Dartmoor
- For sale by Private Treaty

Guide Price: £1,100,000

Holworthy Farms & Land Department
farms@kivells.com | 01409 259547

Farms Sale Agreed

KIVELLS

www.kivells.com

Tregaminion Manor Farm Morvah, Pendeen, Penzance



- Idyllic coastal setting
- Ring fenced farm in an Area of Outstanding Natural Beauty
- Multiple dwellings for income generation or multi-generational living
- Period farmhouse and two cottages
- Range of modern and traditional farm buildings
- Development opportunities with some planning consent in place
- In all some 118 acres
- EPC C, G & G.

Guide Price: £2,500,000

Holsworthy Farms & Land Department
farms@kivells.com | 01409 259547

Trelissick Farm Sithney, Helston



In a beautiful sheltered setting, an 85 acre stock farm. For sale as a whole or in the following lots.

LOT 1: Farmhouse, range of modern livestock and storage buildings, traditional stone barns (some with planning for residential development), set in just over 28 acres of land. EPC: E. **Guide Price: £1,300,000**

LOT 2: A super run of gently sloping pasture land extending to some 43½ acres. **Guide Price: £375,000**

LOT 3: Just over 14 acres and a former waterworks building with planning in principal for a dwelling. **Guide Price: £290,000**

Holsworthy Farms & Land Department
farms@kivells.com | 01409 259547

Farms Sale Agreed

KIVELLS

www.kivells.com

Sensham Farm Marhamchurch, Bude



- Substantial modern farmhouse and separate first floor flat, both in need of modernisation
- Range of adaptable farm buildings with stabling
- Set in some 57 acres
- Not far from the North Cornish coast
- EPCs: D and F

Guide Price: £1,600,000

Holsworthy Farms & Land Department
farms@kivells.com | 01409 259547

Pinelands Farm Highampton, Beaworthy



- Charming lifestyle farm with a three bedroom, newly renovated and extended bungalow
- Superb range of traditional and modern outbuildings
- Productive pasture with pockets of woodland extending to just over 56 acres
- Secluded yet convenient location
- EPC: D

Guide Price: £845,000

Holsworthy Farms & Land Department
farms@kivells.com | 01409 259547

Land Sale Agreed

KIVELLS

www.kivells.com

Land off Blackacre Lane

St Columb | Guide Price £150,000 - £155,000



Approx 12.87 acres comprising a single enclosure of gently sloping land currently in a temporary ley, although in recent years has been used for arable and vegetable growing purposes.
Liskeard Farms & Land Agency
mark.bunt@kivells.com | 01579 345543

Land at Viverdon Down

St. Mellion, Saltash | Guide Price £465,000



Just under 45 acres of productive pasture land in a very accessible location with lovely far reaching views.
Holsworthy Farms & Land Agency
farms@kivells.com | 01409 259547

Land at St. Issey (LOT 1)

Wadebridge | Guide Price £470,000



Extending to a total of 39.74 acres, lot one comprises a productive block of Grade 3 pasture land, in five enclosures.
Exeter Farms & Land Agency
exeter@kivells.com | 01392 252262

Land at St. Issey (LOT 2)

Wadebridge | Guide Price £450,000



A productive block of farmland totalling 38.87 acres, contained within a ring fence of six enclosures.
Exeter Farms & Land Agency
exeter@kivells.com | 01392 252262

Land at Upton Farm (Lot 1)

Delabole | Guide Price £500,000



Approx. 39.59 acres comprising a ring fence block of level or very gently sloping land currently in arable and temporary pastures contained in large, easy working, enclosures.
Liskeard Farms & Land Department
mark.bunt@kivells.com | 01579 345543

Land at Upton Farm (Lot 2)

Delabole | Guide Price £1,105,000



Approx. 88.25 acres comprising a block of level or very gently sloping land currently in arable and temporary pastures, mostly contained in large, easy working, enclosures.
Liskeard Farms & Land Department
mark.bunt@kivells.com | 01579 345543

Land Sale Agreed

KIVELLS

www.kivells.com

Land forming Part Oldsbrim (Lot 1) Poundsgate, Newton Abbot | Guide Price £150,000



Approximately 26.19 acres incorporating a block of well presented permanent grassland together with areas of rough grazing.

Exeter Farms & Land Department
ian.caunter@kivells.com | 01392 252262

Land forming Part Oldsbrim (Lot 2) Poundsgate, Newton Abbot | Guide Price £75,000



Approximately 12.62 acres incorporating three immaculate field parcels down to permanent pasture. A single access point is available from the north.

Exeter Farms & Land Department
ian.caunter@kivells.com | 01392 252262

Land at Chudleighs Barn Holding Liskeard | Guide Price £100,000 - £125,000



Approximately 20.19 acres of pasture and amenity land with pretty stream frontage and some woodland included.

Liskeard Farms & Land Department
mark.bunt@kivells.com | 01579 345543

Solar Park & Land at Gammaton Bideford

- Two solar parks with RPI linked, long-term leases
- Substantial income
- Excellent road frontage with good internal access via a well established track network
- 21.55 acres of quality pastureland in addition to the solar
- In all about 109.9 acres combining solar and pastureland

Guide Price: £1,950,000

Exeter Farms & Land Department
ben.hancock@kivells.com | 07760 887581



Tregovenek Bungalow, Attwood Lane, Pensilva, Liskeard, Cornwall PL14 5QU

Kivells have been instructed to market Tregovenek, a detached three/four bedroom bungalow in a quiet rural location, close to the village of Bolventor, with good size outside space. The bungalow is subject to an Agricultural Occupancy Condition.

Enquiries to W M Bunt BSc MRICS FAAV, Kivells, 7-8 Bay Tree Hill, Liskeard,
Cornwall PL14 4BE

Tel: 01579 345543 or 07879 640970. Email: mark.bunt@kivells.com.