



EXETER LIVESTOCK CENTRE

MARKET REPORT

JUNE 2026

Friday 12th June – Store Stock Market



Your **Development Land and Planning Team** here at Kivells have housebuilders and developers who are interested in the right sites – from small family run builders who are looking for just 10 plots to large national housebuilders who want sites for 100 plus houses.

If you own land on the edge of a large village or town with good access and road frontage, we would be delighted to chat with you about your land and if there is a chance of planning for housing development in the future. With the recent reforms to the planning system, this could be an opportunity to add value to your land that could work harder for you.



Contact your Development Land & Planning Team today to discuss your options.



Oliver Keates BSc (Hons)
Dip TP, MRTPI
Head of Development Land
and Planning Services
07554 060370



Mark Bromell BSc (Hons)
MRICS FAAV FLAA
Director
07966 430001



Mark Bunt
BSc MRICS FAAV
Director
07879 640970



Simon Alford
Director
07789 980203



Thomas Rattray
BSc (Hons) MRICS FAAV
Director
07813 016804



Claire Quick
BSc (Hons) MRICS FAAV
Rural Chartered Surveyor
07789 980204



Ian Caunter BSc (Hons)
MRICS FAAV FLAA
Rural Chartered Surveyor
07813 068935



Sam Turner
MNAEA
Director
07951 240305



Daniel Stokes
MNAEA
Director
07581 006203

37TH ANNUAL SALE OF STANDING STRAW

Entries Invited

EXETER LIVESTOCK CENTRE



ENTRIES CLOSE
FRIDAY
5TH JUNE 2026



SALE DATE
FRIDAY
19TH JUNE 2026



SALE AT APPROX.
12.30PM

PLEASE CONTACT EXETER LIVESTOCK CENTRE OR IAN CAUNTER
FOR MORE DETAILS & ENTRY FORMS OR VISIT OUR WEBSITE

07813 068395 | 01392 251261 | EXETER@KIVELLS.COM | WWW.KIVELLS.COM

KIVELLS

www.kivells.com

Friday 12th June

358 STORE CATTLE AND STIRKS– 10.00am

Auctioneer: Simon Alford – 07789 980203

Store Steers to £2260 – Store Heifers to £2140

A good quality entry of store cattle took another leap upwards in price right across the board here at Exeter this Friday with a packed ring of buyers from both away and nearer to home pushing returns to heights not seen for some while. Steers topped out at £2260 given for superbly bred and fed Aberdeen Angus (25m) from Richard and Jean Tully up from Waddeton, Brixham whilst Penny Hanson of Widecombe in The Moor parted with her slightly younger pair of Angus bullocks (22m) for a very creditable £2120 apiece. Two strong South Devon steers (20-24m) from Chris Lentern in from Chagford also reached £2260 with a similar looking Limousin (30m) off the same farm when easing to £2180. Also, a trio of younger (24m) Limousins from Brian Vallance and Family of Bickington looked as dear as anything sold on the day when drawing £2100 apiece whilst trim yearling Limousins ran to a very decent £1800 for a couple from Leo Bradford and Family in from Iddesleigh and young South Devons of a similar age came back at £1530 for Ben Smith of Metcombe. Ivor and Neil Pellow, Sourton tipped up with some of their usual well fed steers and saw Herefords (23m) draw 2180 and British Blues (22m) rise to £2080 whilst well-kept Blues (17m) from Rob and Lizzie Buxton in from Talaton came back at a well-deserved £2000 a time for a pen of four. Grand Simmental steers (28m) from Andrew Shervington and Family of Hittisleigh saw singles sell to £2170 and £2140 whilst tremendous Charolais bullocks (20m) sold readily and to £1990 for John Cole and Family of Harford as did an eye catching pen of five much younger (13m) Charolais from Darren and Harry Cole of Mary Tavy when they returned a notable £1900 each. John Cole and Family also saw a rangy Salers steer (27m) fetch £1920 with another lofty sort from Rob and Lizzy Buxton making £1550 in the way of a Friesian (18m). A much better show of store heifers about this week with Limousins leading the way when one (23m) of high calibre realised £2140 for John and Helen Keep in from Moretonhampstead followed by a pair (28m) Rob and Angie Davies up from Diptford which were close at £2100 ahead. Other Limousin heifer returns of note included a shapely one (21m) at £2020 for John Searle of Crediton and more super yearling Limousins from Leo Bradford and Family who saw their pair of heifers ease to £1560 a life. John Searle was soon back when selling a splendid trio of British Blue females (22m) for £2090 a time whilst Aberdeen Angus (22m) rose to £2030 and £1910 for Pat Lee in from Rackenford and Penny Hanson respectively. A good entry of grazing type cows with the very best drawing £2400 and £2230 for Limousin crosses from William Bromell in from Chagford followed by more well-bred Aberdeen Angus from Richard and Jean Tully who saw their tidy grazing cows reach £1980 and £1970. Also, cull bulls ran to £2680 for a tremendous Limousin from Andrew Cleave of Christow.

Red Tractor Please ensure you inform us if your Red Tractor status has changed since last consigning stock with us or if the residency rules for the animals you are selling have not been met.

Please could we remind all customers of the need to clean and disinfect their vehicles and to complete the Vendor Declaration on the back of the entry forms. Thank you



Penbode
Farm Vets

- Competitively priced farm medicines
- Dairy and beef fertility clubs
- 24/7/365 veterinary cover
- Livestock fertility testing and advice
- VetTech services
- In-house labs and lambing bays

www.penbodevets.co.uk
Holsworthy | Bradworthy | Stratton | Launceston | Camelford

179 STIRKS & SUCKLED CALVES

Auctioneer: Ian Caunter 07813 068935

A neat show of stirks and suckled calves met a rip roaring trade. Rob Buxton of Talaton presented a super run of dairy bred Blues with the best topping out at £1560 (11m) with others to £1490 & £1480. Best of the suckler bred types saw Westcott Farms of Brentor selling Charolais cross steers (7m) to £1550 with similar goods to £1520. South West Bobcat of Okehampton closely followed with good Limousin cross steers (10m) achieving £1470 with others to £1400. Best of the natives saw FS Davies Partnership of Crediton sell Hereford cross steers to £1330 (10m) whilst Richard Widger & Partners of Kingsbridge presented Charolais cross steers obtaining £1310 (13m). Melanie Forward of Talaton sold further Hereford steers (9m) to £1300 with similar goods from FP Hill & Son of Clayhanger topping out at £1280. A super run of dairy bred Herefords from Cooper Farm Partnership of Ivybridge topped out at £1230 (8m) whilst Angus steers from WJ & DP Bailey & Son of Bridport achieved £1180 (11m). Younger Angus steers from Well Park Farms of Buckfastleigh hit £1020 (7m) with further younger Hereford steers from Cooper Farm Partnership realising £1000. Best of the heifers topped out at an impressive £1520 for John & Steph Rogers of Dunstone selling South Devons (12m). Westcott Farms sold a super pen of Charolais heifers (8m) to £1440 with others to £1280. Rob Buxton sold the best of his Blue heifers (11m) to £1320 x2 and £1290. Best of the natives saw Nick Isaac of Ipplepen sell South Devons (10m) to £1220. Herefords topped out at £1200 for Melanie Forward (8m) whilst a useful pen of dairy bred Angus heifers from CSN Partridge Farms of Broadclyst attained £1200 (13m). South West Bobcat sold Limousin cross heifers to £1160 (12m) whilst Richard Widger & Partners sold dairy bred Limousin cross heifers (13m) to £1120 and Charolais crosses of a similar ilk to £1100. Further Angus heifers to WJ & DP Bailey & Son achieved £1070 (11m) with others off the same good farm to £1010. Younger dairy bred Angus heifers from Well Park Farms achieved £970 (8m). Best of the bulls topped out at £1200 for Paul Bowden of Ilington. James Dyer sold younger Blue bulls to £920 with Angus bulls off the same holding realising £840.

80 CALVES 10.15 AM

Auctioneer: Mark Davis 07773 371774

A better entry of Calves sold to a flying trade when all calves averaged £509.24!

Top of the day was £750 for the best of 3 cracking British Blue bulls from James Baker of Aylesbeare who sold others to £745. Other Blues to £715 for Andrew, Rose & Mark Retter of Honiton, £710 & £650 for the Cooper Farm Partnership of Ivybridge, £690 for Roy & Katherine Emmett of South Molton, £650 for Towhill Farm Ltd of Broadclyst, £640 for Stuart Dagworthy of Woodbury Salterton and £625 for Messrs NA & AJ Maynard of Awliscombe. Limousin bulls to £660 for Mark & Anita Saunders of Cullompton with others to £635 for Dave Gillbard of Black Dog and £570 for Towhill Farm Ltd. Simmental bulls to £610 & £540 for MR & KM Pring of Broadclyst and £530 for Dave Gillbard. Native calves on fire and topped at £610 for a super Aberdeen Angus bull from Lawrence Luxmore of Crediton with others to £605 for Mark & Anita Saunders and £500 for NA & AJ Maynard. Hereford bulls to £535 & 480 for Wastenage Farms of Budleigh Salterton. **Heifers topped at £665** for a super British Blue heifer from James Baker who sold others to £655. Other Blue heifers to £600 for Stuart Dagworthy, £585 for Roy & Katherine Emmett and £575, £560 & £525 for Andrew, Rose & Mark Retter. Limousin heifers to £580 for Dave Gillbard and £580 & £565 for Chris Lee of Naddewater. Aberdeen Angus heifers to £555 for Lawrence Luxmore, £478 for Messrs R & J Legg & Son and £452 & £410 for Messrs AR Hooper & Partners of Spreyton. **Friesians a cracking trade topping at £590** for a weaned Holstein from Towhill Farm Ltd with young calves to £360 for Dave Gillbard & £280 for Mark & Anita Saunders.

CALVES - 10.15 am						
Auctioneer: - Mark Davis - 07773371774						
CALVES	Bulls			Heifers		
Breed		TOP	AVE		TOP	AVE
British Blue	24	750	581	19	665	507
Simmental	3	610	560			
Limousin	4	660	591	4	580	523
Charolais	1	360	360			
Aberdeen Angus	8	610	485	9	555	422
Hereford	2	535	507	1	360	360
Friesians	5	590	315			

50 DAIRY

Auctioneer: Mark Davis 07773 371774

A small entry of varying quality sold to a decent trade for what was forward! A small number of fresh milk topped at £2700 for an Oxenacres pedigree heifer from Martin & Di Webber of Drewsteighton. British Friesian heifers topped at £2350 for Messrs CSN Partridge Farms of Broadclyst who sold others to £32150, £2120 & £2100. Cows topped at £2600 twice for two second calvers from the Chettiscombe herd of Ian, Caroline & Jess Tapp of Tiverton. An Ayrshire x Jersey second calver sold at £2000 for Messrs R & J Legg & Son of Bridport. Pedigree Jersey heifers topped at £2000 for Tim & Julie Gary of Bridport whilst Charles Stanbury also of Bridport sold three non pedigree Jersey heifers to £1750 & £1600.

Late autumn calving cows topped at £2300 for a Brown Swiss x cow from Kingston Hill Farm Ltd of Oxford who sold others to £2250, £2200 & £2150 twice to average £1774. Earth Products of Plymouth sold a consignment to top at £1850 twice and averaged £1620.

Three of a Kind Production Sale

KIVELLS **MartEye** *These Dorsets' are no Gamble*

<p>A ♠ The Burhos Flock Matt & Adam Care</p>  <p>Res. Champion May Fair Sale 2025</p> <p>♥ ♠</p>	<p>A ♦ The Sandy Lane Flock Sam Driver</p>  <p>Champion Carlisle Sale 2025</p> <p>♦ ♥</p>	<p>A ♣ The Byeways Flock Joe Larder</p>  <p>1st Shearling Ewe Worcester Sale 2025</p> <p>♣ ♥</p>
-----------------------------------------------------------------------------------------------------------------------------------------------------------------------------------------------------------------------	------------------------------------------------------------------------------------------------------------------------------------------------------------------------------------------------------------	---------------------------------------------------------------------------------------------------------------------------------------------------------------------------------------------------------------------

- Individual In-Lamb Shearlings
- Individual Ewe Lambs
- A Select Offering of Rams

Saturday 25th July 2026

Waldon Acres, Byeways Lane, Sandford, Somerset, BS25 5PG

A Winning Combination in 2025

10 minutes from Bristol Airport

317 SHEEP – 10.45 AM
Auctioneer: Russell Steer 07788 318701

Store Lambs/Hoggs £180
Grazing Ewes to £135 **Breeding Ewes to £**
Ewe Doubles to £380 **Ewe Singles to £335**

“The Annual June sale of Early breeding sheep didn’t disappoint, bringing the sheep pens alive here today with a tremendous show of sheep that sold to a solid trade for the first of our monthly breeding sales, as if the trade was ever really in doubt!”

1245 JUNE BREEDING SHEEP SALE & 25 RAMS

We’ll start with the breeders and the solid trade that ensued with the best of the older ewes reaching £250 for pure Suffolk’s from Rich Berry as FM Dorset ewes sold to £230 for Stan Harris of Blandford and £228 for Mrs Vining of Somerton and Merv Hutchings of Launceston had Berrichon aged ewes at £235. Plenty of business either side of £200 on the more common older ewes. Pure Dorset Shearlings peaked at £320 for three pens from Messrs Foxhollow Farms of Norton Sub Hamdon as Graham & Sarah Reed of Bickleigh sold theirs well at £300 three times and others at £290. Dorset cross shearlings were headed by the second prize pen being Dorset x Mules from the Lake family of South Molton that rose to £328 early in the sale with other pens from this good home at £295 twice. First prize honours went to Mark Johnson and family of Bridport with a tremendous run of 251 Dorset x Mules that peaked at £300, didn’t sell a pen less than £270 and averaged a remarkable £282 overall! Well done to them. Third prize Dorset crosses went to a Andrew Mather of Arlington with his run of Dorset x BFL Shearlings, these sold to £290 twice and £285 twice. Other Dorset Mules to £270 twice for the Haskell family of Wareham and £265 for the Pittard family of Ilminster.

The 332 Suffolk cross shearlings drew a big crowd and a big trade too, with an increase of £100 on last years average to level at £313 across the board. Topping the breed and indeed the day was John Simons of South Chard with three tremendous pens at £390 and a further two at £330 closely followed by Ian Johnson and family of Bridport with two pens at £365, a further three at £345 and two at £340. The Haskell family reached £318 and had another two pens at £315 as Robert Chanin of Thorverton had two pens at £310 and Winston Thorne of Umberleigh sold three of his pens at £300. All others £250 to £300.

Ian Johnson had four pens of Texel crosses that surpassed his Suffolks when selling at £385 twice and £380 twice and more Texel crosses at £295 for Russell Stevens of Crediton. A sprinkling of Mules at this early sale saw Peter & Angela Smerdon of Rattery make £275 of their double pen closely followed by a triple pen at £262 from Gary & Helen Woodman of Chawleigh and £260 for Ron Manning of North Tawton.

Nearly 1300 breeders averaged £272 including some common sorts in the £150 to £190 bracket.

Grazers peaked at £300 for LJ Skitt of Newton Abbot with an unwarranted spotty ram as Andrew Bond of South Milton had a youngster at £155 and Easycare rams at £140 for the Burrough family of Axminster.

Sam took you through the rams and a variable trade as expected for the June sale saw tops of 720, 680 & 650gns for Rich Berry of Kenn as Matt & Adam Care of Looe sold their Dorset Shearlings at 650gns and 550gns and Chris and Sue Popham returned to Trull delighted with their 4T CharTex at 500gns.

10 ORPHAN LAMBS

Just ten orphan lambs this week reached £77 for the Harvey family of Tavistock.

220 STORE LAMBS/HOGGS

A tidy little entry of 220 stores ahead of next week's opening store lamb sale saw Barry Clarke of Doddiscombsleigh top the trade with forward sorts at £196 & £181, T Forward of Bolham had Dorset's at £176 and Charlie Hutchings of Bradninch followed up last week's success reaching £173 & £161.

29 GRAZING EWES & RAMS

Grazers peaked at £300 for LJ Skitt of Newton Abbot with an unwarranted spotty ram as Andrew Bond of South Milton had a youngster at £155 and Easycare rams at £140 for the Burrough family of Axminster.

BREEDING EWES

A couple pens of Mule breeders from Steve Bonner sold to £190 apiece.

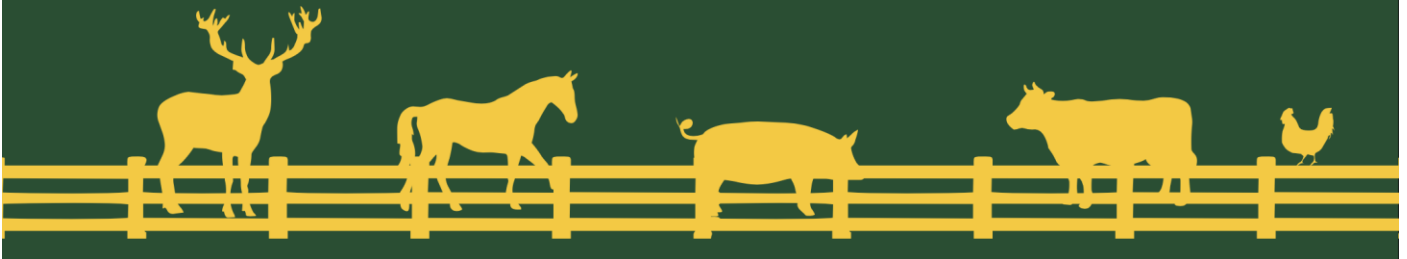
197 EWES & LAMBS

197 Ewes and hogs with their 254 lambs at foot met possibly the strongest trade of the season with a massive crowd competing well for the generally good show on offer giving us an overall average of £320 per outfit and £140 per life bolstered by some great hogg outfits. Best ewes with doubles to £395 for Andrew Baker of Marlton followed by Lee bros of Chulmleigh with Mules at £380 whilst more of the same made £378 for Tim & Amy Heywood of Rackenford who also had Romney doubles at £366 and their respective singles were also top side of £300. Singles were headed by some great hogg outfits, these reaching £365 & £350 for Martin Quick of North Tawton with his Cheviot Mule hogs followed by the great run of Suffolk & Texel x Mule hogs from Brian Clothier and family of Radstock that reached £362, £355 & £350 to average £345 of all 80 singles sold from this good farm.

GREEN LANE RURAL SERVICES Ltd

HEDGING & FENCING CONTRACTORS

01884 698902



f @KivellsProperty

KIVELLS
www.kivells.com

Your **Rural Professional Team** here at Kivells are experts in a wide range of agricultural and property issues including:

- Valuations
- Compulsory Purchase and Compensation Claims
- Countryside Stewardship and Grants (SFI)
- Landlord and Tenant
- Rural Planning
- Rural Property Management
- Telecommunications
- Renewables



Contact your Rural Professional Team today for expert advice



Thomas Rattray
BSc (Hons) MRICS FAAV
Director
07813 016804



Mark Bromell BSc (Hons)
MRICS FAAV FLAA
Director
07966 430001



Mark Bunt
BSc MRICS FAAV
Director
07879 640970



Claire Quick
BSc (Hons) MRICS FAAV
Rural Chartered Surveyor
07789 980204



Ian Caunter BSc (Hons)
MRICS FAAV FLAA
Rural Chartered Surveyor
07813 068935



Phoebe Millar
BSc (Hons) MRICS FAAV
Rural Chartered Surveyor
07741 312305



www.kivells.com



TB Champions CIC

We understand that bTB doesn't just affect cattle – it impacts the wellbeing of farming families, and threatens the future of farm businesses.

TB Champions has been established to stand alongside farmers throughout their bTB breakdowns and provide on-going support.

Our Objectives

- **Mental Health and Wellbeing**
 - Provide emotional support for farming families and, if required, signpost to specialist wellbeing professionals who are familiar with the impacts of bovine TB on farmers and their families.
- **Education - Raise Awareness and Promote Best Practice**
 - Ensure that farmers have the knowledge and understanding to manage their breakdown as effectively as possible.
 - Clarify information around testing protocols, interpreting results, biosecurity, and policy, and what options are available to them when it comes to movements, testing, trading etc. Assist with government paperwork and licensing if required.
 - Strengthen farmer engagement with bTB control strategies in order to strive for eradication on-farm.
- **Collaborative Approach - Bridge Communication Gaps**
 - Strengthen dialogue and facilitate a collaborative approach between farmers, private vets, APHA, and support services.
 - Liaise with APHA on the farmer's behalf where possible.
- **Business Resilience - Provide Business Support Signposting**
 - Guide farmers to specialist business advice and support services in the event of a TB breakdown that may significantly impact their operations.
- **Wildlife Monitoring**
 - Provide access to 'pool' wildlife cameras to help farmers identify and monitor wildlife risks linked to bTB transmission.



We are offering **FREE SUPPORT** to cattle farmers in Devon

👉 Please complete our short 10 minute questionnaire to register for support:

<https://forms.office.com/e/Mhgk9ZHZWb>

Or if you'd like to learn more please email emily@tb-champions.org.uk or call 07902 358522



"Working together to improve wellbeing, understanding and engagement in bTB control."





South West Region

Chairman's Farm Walk and Industry Discussion

Hosted by Jonathan Stephens and Family.

Wednesday 17th June 2026, 2pm, trailers rolling at 2:30pm

Swannaton Farm, Sandford, Crediton, Devon, EX17 4EW

What3Words ///formal.severe.redeeming

Join us for a farm walk hosted by Jonathan, our incoming Regional Chairman, followed by an open Q&A with industry leaders.

Guest speakers include:

Phil Stocker, NSA Chief Executive and Russell Steer, Kivells Director

What to Expect:

- A guided walk around Swannaton Farm
- Insights into the Stephens Family's Sheep and Cattle enterprises
 - An open Q&A on key topics important to the industry
- Networking opportunities with fellow farmers and industry professionals

Reservation needed for catering purposes

Refreshments will be provided

Members and non-members welcome

Contact Ian May, Regional Manager to reserve a place

Email: ian@nationalsheep.org.uk Tel: 07913 043234



FORTHCOMING SALES

MONDAY 15TH JUNE – EXETER LIVESTOCK CENTRE

Weekly Prime Stock Market

FRIDAY 19TH JUNE – EXETER LIVESTOCK CENTRE

Weekly Store Market to include 1st Weekly Sale of Store Lambs, Monthly Catalogued Sale of Beef Breeding Stock, Fortnightly Pig Sale and Collective Standing Straw Sale.

MONDAY 22ND JUNE – EXETER LIVESTOCK CENTRE

Weekly Prime Stock Market

FRIDAY 26TH JUNE – EXETER LIVESTOCK CENTRE

Weekly Store Market to include Monthly Sale of Organic Cattle and Sheep, Sale of Dairy Cattle

MONDAY 29TH JUNE – EXETER LIVESTOCK CENTRE

Weekly Prime Stock Market

TUESDAY 30TH JUNE – EXETER LIVESTOCK CENTRE

Monthly Sale of TB Restricted (Orange Market) Cattle

FRIDAY 3RD JULY – EXETER LIVESTOCK CENTRE

Weekly Store Market to include Fortnightly Pig Sale

MONDAY 6TH JULY – EXETER LIVESTOCK CENTRE

Weekly Prime Stock Market

TUESDAY 7TH JULY – EXETER LIVESTOCK CENTRE

54th Great July Fair Annual Sale of Breeding Ewes to include Show and Sale of Suffolk X Shearlings and Ram Sale to include Show & Sale for the WCSSA (entries close 23rd June)

FRIDAY 10TH JULY – EXETER LIVESTOCK CENTRE

Weekly Store Market to include Sale of Dairy Cattle including Summer Gold Jersey Sale

MONDAY 13TH JULY – EXETER LIVESTOCK CENTRE

Weekly Prime Stock Market

FRIDAY 17TH JULY – EXETER LIVESTOCK CENTRE

Weekly Store Market to include Monthly Sale of Beef Breeding plus Fortnightly Pig Sale

MONDAY 20TH JULY – EXETER LIVESTOCK CENTRE

Weekly Prime Stock Market

FRIDAY 24TH JULY – EXETER LIVESTOCK CENTRE

Weekly Store Market to include Sale of Dairy Cattle

SATURDAY 25TH JULY – WALDEN ACRES, SANDFORD BS25 5PG

“THREE OF A KIND” Production Sale of Pedigree & MV Accredited Dorset Sheep

SUNDAY 26TH JULY – TOTNES SHOW

Come along and meet the team.

MONDAY 27TH JULY – EXETER LIVESTOCK CENTRE

Weekly Prime Stock Market

Farms | Land | Smallholdings

Thinking of selling?

Kivells are at the heart of the farming community throughout the westcountry and beyond and have been selling farms, land and smallholdings since 1885.



Our tailor made service includes;

- ✓ Personal and confidential service
- ✓ Experienced team of Farm Agents
- ✓ Tailor made marketing plans across a variety of platforms
- ✓ Network of contacts within the farming community
- ✓ Added value with advice on Tax, Planning and Stewardship



In-house
bespoke
brochures



Over 40,000
followers on
Social Media



Millions of
page views on
kivells.com,
Rightmove
& Zoopa



Coverage in
national and
regional
publications

With 140 years of industry experience, we pride ourselves in providing friendly and professional advice on all aspects of selling your farm, land or smallholding.

Oxenpark Farm Hersham, Bude

- Wonderful setting with far reaching views over Bude Bay and the North Cornish coast.
- Three bedroom farmhouse and four further cottages
- Superb range of outbuildings suitable for a variety of uses
- In all about 16.18 acres with further land available by separate negotiation.
- Freehold
- Available as a whole or in three lots
- EPC: D, C, C, C & D

Lot 1: Three bedroom farmhouse, two holiday cottages, one further cottage and a lodge. Range of adaptable farm buildings, income generating wind turbine and just over 16 acres.
Guide Price: £1,395,000

Lot 2: A useful block of 45½ acres of pasture and arable land including 3 acres of mature woodland.
Guide Price: £515,000

Lot 3: A single gently sloping pasture field extending to 6.34 acres.
Guide Price: £85,000

Guide Price (as a whole): £1,995,000

Holsworthy Farms & Land Department
farms@kivells.com | 01409 259547



Farms For Sale

KIVELLS

www.kivells.com

Vennbrook Varley Farm, PRIXFORD, Barnstaple

- 100 acre residential and stock farm
- Attractive, well proportioned bungalow (AOC)
- Useful range of livestock and storage buildings
- Ring fenced pasture land
- Superb views
- EPC C [77]

Guide Price: £1,800,000

Holsworthy Farms & Land Department
farms@kivells.com | 01409 259547



Farms For Sale

KIVELLS

www.kivells.com

Puddaven Farm North Bovey, Newton Abbot

- Immaculate Farmhouse
- Stunning two bedroom Holiday Cottage
- Outbuildings and stabling
- Outdoor equine menage
- Well-maintained pasture land
- Versatile lifestyle property
- Far reaching views
- In all totalling approximately 32.35 acres (13.09 hectares)
- EPC: E & D

Guide Price: £1,695,000

Exeter Farms & Land Department
exeter@kivells.com | 01392 252262



Farms For Sale

KIVELLS

www.kivells.com

Landabethick Blisland, Bodmin

- Charming, 6 bedroom detached farmhouse
- Excellent range of traditional farm buildings suitable for a variety of uses
- In all about 77 acres comprising a combination of good agricultural land and woodland
- Parking, garaging and workshop space
- Unrivalled, private position at the end of a private drive
- Freehold with vacant possession available
- EPC: D

Guide Price: £1,350,000

Exeter Farms & Land Department
exeter@kivells.com | 01392 252262



Farms For Sale

KIVELLS

www.kivells.com

North Hayne Farm Shillingford, Tiverton

- Attractive and spacious five bedroom farmhouse with extensive living accommodation
- Superb range of traditional outbuildings with potential (STP)
- Productive pastureland, woodland and river access
- In all about 37.36 acres
- Freehold with vacant possession available
- EPC: F

Guide Price: £1,075,000

Exeter Farms & Land Department
exeter@kivells.com | 01392 252262



Farms For Sale

KIVELLS

www.kivells.com

Fern Hill Farm Mount, Bodmin

- Farm with significant development potential
- Range of agricultural and equestrian buildings
- 60.29 acres of land including productive pasture
- Two bedroom lodge
- Planning for farm dwelling and residential caravan
- Located in a super rural location with far reaching valley views
- Freehold with vacant possession upon completion

Guide Price: £1,000,000

Liskeard Farms & Land Department
mark.bunt@kivells.com | 01579 345543



Farms For Sale

KIVELLS

www.kivells.com

Trehere Farm Trewidland, Liskeard

- Substantial four bedroom (all en-suite) modern house enjoying extensive country views
- Range of buildings currently comprising a livery yard with potential for alternative uses
- Approximately 36.51 acres of pasture, amenity woodland and a sand school
- Wonderful rural location yet conveniently situated close to several villages and the town of Liskeard
- EPC: D

Guide Price: £995,000

Liskeard Farms & Land Department
mark.bunt@kivells.com | 01579 345543



Rolstone Bungalow Morchard Bishop, Crediton

- A wonderfully presented and immaculate four bedroom Bungalow, subject to an Agricultural Occupancy Condition (AOC)
- Adjacent Workshop and Office Unit
- A useful Agricultural Building
- Well maintained productive Pasture Land
- In all totalling approximately 10.74 acres (4.34 hectares)
- EPC: C

Guide Price: £925,000

Exeter Farms & Land Department
exeter@kivells.com | 01392 252262



Farms For Sale

KIVELLS

www.kivells.com

Holdstrong Farmhouse Coryton, Okehampton

- A delightful 5 bedroom 17th Century Devon Longhouse
- Situated in a beautiful rural setting on the edge of the Dartmoor National Park
- Superb views
- Stabling and further outbuildings
- Pond
- Coppice
- In all about 15.87 acres
- Freehold with vacant possession available
- EPC: E

Guide Price: £850,000

Exeter Farms & Land Department
exeter@kivells.com | 01392 252262



Farms For Sale

KIVELLS

www.kivells.com

Southmoor Farm Winnards Perch, St Columb

- A superbly presented residential farm in a sought-after North Cornish location
- Well presented, five bedroom detached property in fantastic condition
- Versatile outbuildings
- Productive pasture and woodland
- Sought after location with easy access to the North Cornish coastline
- In all about 33.54 acres
- EPC E [50]

Guide Price: £825,000

Holsworthy Farms & Land Department
farms@kivells.com | 01409 259547



Farms For Sale

KIVELLS

www.kivells.com

West Burrow Farm Bratton Clovelly, Okehampton

A quietly set rural small holding offering huge potential.

- Grade II* Listed thatched farmhouse in need of modernisation.
- 3 beds, 2 receptions.
- Two adjoining traditional barns.
- Land and woodland
- EPC: Exempt as a listed property

Guide Price: £645,000

Holsworthy Farms & Land Department
farms@kivells.com | 01409 259547



Development Site For Sale

KIVELLS

www.kivells.com

Development Site at Lower Newton Farm Zeal Monachorum, Crediton, Devon

- Valuable residential development opportunity
- Range of agricultural buildings with planning permission for demolition and creation of three new build, detached four and three bedroom dwellings
- Potential under extension of Permitted Development Rights for retention and conversion of the existing buildings (Clarkson's Law - Maximum 10 dwellings), subject to planning
- Additional land available

Guide Price: £450,000

Exeter Farms & Land Department
simon.alford@kivells.com | 01392 252262



Aerial view looking north west

Farms For Auction

KIVELLS

www.kivells.com

North Kestle Tregadillett, Launceston

For Sale by Public Auction on Wednesday 24th June, 7.00pm at Lifton Strawberry Fields, Lifton, Devon, PL16 0DH.

- A charming rural small holding with a substantial farmhouse
- In need of renovation
- Range of outbuildings including some stone barns
- 4.78 acres

Guide Price: £375,000

Holsworthy Farms & Land Department
farms@kivells.com | 01409 259547



Land For Sale

KIVELLS

www.kivells.com

Land At Trevillies

St. Keyne, Liskeard | Guide Price £375,000 -



Approximately 45.64 acres of productive arable/pasture land and amenity woodland with mains water connected. Freehold with vacant possession upon completion.

Liskeard Farms & Land Department
mark.bunt@kivells.com | 01579 345543

Land at Stoke Canon

Exeter, Devon | Offers in Excess of £375,000

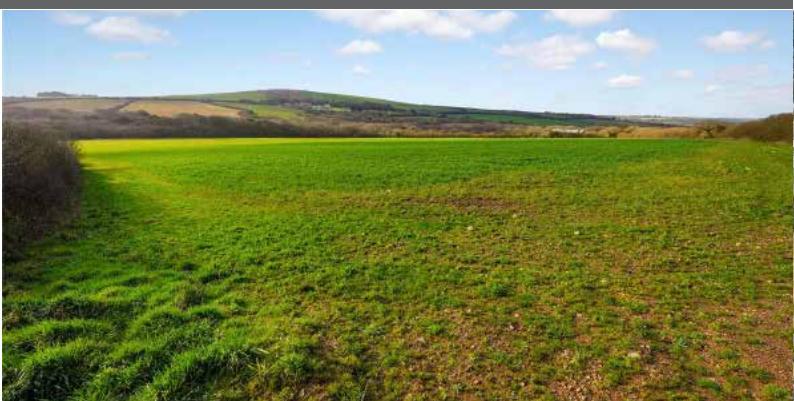


A highly productive run of level arable and pastureland with livestock handling pens extending to just under 46 acres.

Exeter Farms & Land Department
simon.alford@kivells.com | 01392 252262

Land at Criftoe Farm

Tregonetha | Guide Price £675,000 - £700,000

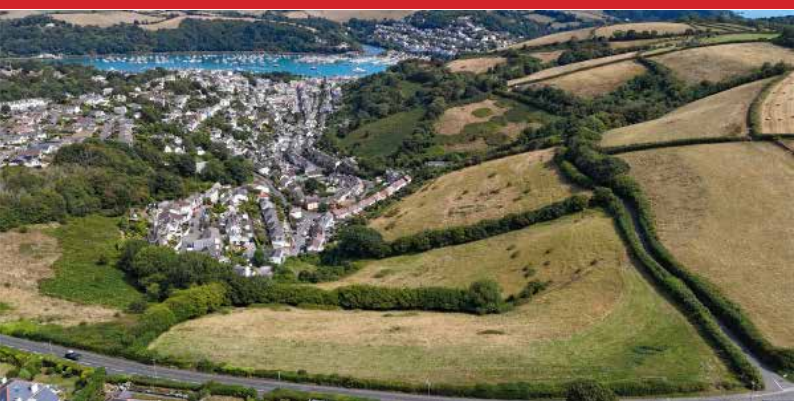


Approximately 64.98 acres of quality cropping land and amenity woodland and a useful modern farm building (with potential for alternative uses, subject to planning).

Liskeard Farms & Land Department
mark.bunt@kivells.com | 01579 345543

Land Off Yorke Road

Dartmouth | Guide Price £195,000



Approximately 12.26 acres in two separate field parcels both down to permanent grassland, previously grazed with livestock.

Exeter Farms & Land Department
exeter@kivells.com | 01392 252262

Land at Polskeys Farm

Roche, St. Austell | Guide Price £495,000



Approximately 59.18 acres of pasture and conservation land accessible off a quiet parish road with mains water connected, a useful livestock building and yard.

Liskeard Farms & Land Department
mark.bunt@kivells.com | 01579 345543

Land at Four Beeches Farm

Sourton, Okehampton | Guide Price £224,000



Approximately 26.25 acres of productive pasture land with easy access to the A386. Suitable for amenity, equestrian and traditional farming.

Exeter Farms & Land Department
exeter@kivells.com | 01392 252262

Land at Higher Reedy Mill

Trewidland, Liskeard | Guide Price £50,000



Approximately 4.39 acres of pasture land, accessible off a quiet parish road close to the village of Trewidland in a quiet rural location with far reaching views.

Liskeard Farms & Land Department
mark.bunt@kivells.com | 01579 345543

Land at Lidburn Hill

Tedburn St Mary, Exeter | Guide Price £100,000



An attractive south facing arable field extending to approximately 8.95 acres suited for farming, conservation or amenity uses. For sale as a whole.

Exeter Farms & Land Department
exeter@kivells.com | 01392 252262

Land forming part Home Park

Ipplepen, Newton Abbot | Guide Price £250,000



Approximately 17.57 acres providing an area of secluded pastureland and woodland. The land is well suited for conservation or amenity use.

Exeter Farms & Land Department
exeter@kivells.com | 01392 252262

Land & Buildings at Horwood

Horwood, Bideford



Just over 166 ½ acres of productive arable land and a useful range of modern agricultural buildings.

- **LOT 1:** Just over 132 acres of arable land with a range of modern farm buildings. **Guide Price: £1,600,000**
- **LOT 2:** Circa 34 ½ acres of arable land in a single level field. **Guide Price: £400,000**

Holsworthy Farms & Land Agency
farms@kivells.com | 01409 259547

Land at Crylla

Minions, Liskeard



Extending to approximately 141.40 acres in all, the land at Crylla comprises a completely ring-fenced block of predominantly level agricultural land, divided into a number of useful-sized enclosures and enclosed by traditional stone walls. The land is currently utilised for the grazing of livestock and offers an excellent opportunity for continued agricultural use, with practical sized parcels well suited to grazing and general stock management.

Guide Price: £1,400,000

Holsworthy Farms & Land Agency
farms@kivells.com | 01409 259547

Land and buildings Mucksey Lane

Exbourne, Okehampton



A unique development opportunity sat within 27.85 acres of Grade 2 arable land with river frontage. Full planning permission has been granted for the demolition of the existing building and the construction of a substantial four-bedroom dwelling. Further details can be found on the West Devon Borough Council planning portal under reference 3424/25/FUL.

Guide Price: £475,000

Exeter Farms & Land Agency
ben.hancock@kivells.com | 07760 887581

Land located at Wrigwell

Bickington, Newton Abbot



A fantastic block of productive arable land, well located and with excellent road access. Located just 2 miles east of the A38 Devon Expressway and bordered by the river Lemon, the land is suited for farming, conservation or amenity uses. **Available as a whole or in three lots.**

- **LOT 1:** Approximately 28.59 acres forming a single large field parcel with direct access to the public highway from the north. **Guide Price: £315,000**
- **LOT 2:** Approximately 9.19 acres forming a single gently sloping parcel. Access to the field is available from the south or north directly off the public highway. **Guide Price: £100,000**
- **LOT 3:** Approximately 7.19 acres and comprises of a level field parcel with the River Lemon forming the parcels northern edge. Access is available to the west directly off the public highway. **Guide Price: £85,000**
- **As a whole:** Approximately 44.97 acres of productive arable land. **Guide Price: £500,000**

Exeter Farms & Land Agency
exeter@kivells.com | 01392 252262

Land & Buildings For Rent

GENERAL PURPOSE BUILDING TO LET
Stourscombe, Launceston | £595 pcm



A new 45' x 30' shed at Stourscombe near Launceston, with great access to A30/A388. Ideal for storage.

Thomas Rattray
thomas.rattray@kivells.com | 07813 016804

Land for Auction

Wednesday 24th June, 7.00pm

Venue: Lifton Strawberry Fields, Lifton, Devon PL16 0DE

KIVELLS

www.kivells.com

Land at Liftdown

Liftdown, Lifton | Auction Guide Price £75,000
For sale by public auction - Wednesday 24th June



Extending to some 7.87 acres the land at Liftdown is contained within a gently sloping single enclosure which is all down to permanent pasture.

Holsworthy Farms & Land Agency
Farms@kivells.com | 01409 259547

Land at St Keyne

Liskeard | Auction Guide Price £5,000 - £10,000
For sale by public auction - Wednesday 24th June



Approximately 0.40 acres of woodland and amenity land accessible off a quiet parish road, in a picturesque valley location with a woodland stream running through.

Liskeard Farms & Land Agency
mark.bunt@kivells.com | 01579 345543

Freehold Amenity Land

Tremeale, Daws House | Auction Guide Price £15,000
For sale by public auction - Wednesday 24th June



Parcel of Freehold amenity land extending to approximately 4,225 sq ft with a stone building offering huge potential, subject to necessary building consents, and a swimming pool beneath the mature shrubs.

Launceston Estate Agents
Launceston@kivells.com | 01566 777777

Land at Spring Lodge

Eastcott, Bude | Auction Guide Price £250,000
For sale by public auction - Wednesday 24th June



Versatile parcel of approximately 31 acres of gently sloping land with sea views and boasting a well stocked fishing lake, 5 acres of woodland and a steel framed open barn.

Bude Estate Agents
Bude@kivells.com | 01288 359999

Land at Woolladon

Meeth, Okehampton | Auction Guide Price £130,000
For sale by public auction - Wednesday 24th June



Approximately 17.90 acres of pasture land together with a wooded copse area, arranged in two useful enclosures and well suited to a range of uses.

Exeter Farms & Land Agency
Exeter@kivells.com | 01392 252262

2026 Auction Dates

Wednesday 24th June
Wednesday 29th July
Wednesday 2nd September
Wednesday 7th October
Wednesday 11th November
Wednesday 9th December



Thinking of selling by auction? Contact our experienced team today for a **FREE** no obligation auction appraisal.
www.kivells.com

Previous Auction Results

Wednesday 27th May, 7.00pm

KIVELLS

www.kivells.com

Penloe Field

Woolley, Bude | Auction Guide Price £65,000 - £75,000
SOLD: £75,000



Approximately 5.59 acres in a quiet rural setting with lovely views and a useful open sided storage building - 27' x 15' (8.23m x 4.57m) with a rain water harvest tank to one side.

Holsworthy Farms & Land Agency
Farms@kivells.com | 01409 259547

Land at Ugworthy

Chilsworthy, Holsworthy | Auction Guide Price £45,000 - £50,000
SOLD: £50,000



Extending to some 5.67 acres, the Land at Ugworthy comprises a mainly level pasture field with natural hedge bank boundaries and a small corrugated sheet clad shed (in poor repair) and an ancient burial ground.

Holsworthy Farms & Land Agency
Farms@kivells.com | 01409 259547

Land at Milton Damarel

Holsworthy | Auction Guide Price £20,000
SOLD: £34,000



This pretty 2.42 acre field comprises a mainly level paddock which benefits from excellent access from the adjoining main road on its northern boundary. The land would be suitable for amenity purposes, keeping livestock or ponies.

Holsworthy Farms & Land Agency
Farms@kivells.com | 01409 259547

Land at Furzedon Field

Trewidland, Liskeard | Auction Guide Price £110,000 - £115,000
SOLD: £115,000



Approximately 13.80 acres of pasture land in a ring fence block with a woodland stream boundary and fringe and mains water connected to three troughs.

Liskeard Farms & Land Agency
mark.bunt@kivells.com | 01579 345543

Land West of Wainhouse Corner

St. Gennys, Bude | Auction Guide Price £140,000 - £150,000
SOLD: £140,000



A useful block of just over 15.5 acres of pasture land, with excellent access from the adjoining main road. The land is very gently sloping and extremely well fenced.

Holsworthy Farms & Land Agency
Farms@kivells.com | 01409 259547

Farms Sale Agreed

KIVELLS

www.kivells.com

Keymelford Farm Buildings & Land Keymelford, Colebrook, Crediton, Devon



Lot 1 - Agricultural buildings and yard area with land surrounding extending to 0.41 acres.
Guide Price: £150,000

Lot 2 - Agricultural building with concrete pad and land surrounding extending to 0.41 acres.
Guide Price: £135,000

Lot 3 - A small grassland area extending to approximately 0.14 acres. **Guide Price: £25,000**

Exeter Farms & Land Agency
exeter@kivells.com | 01392 252262

Tor Court Farm Torbryan, Newton Abbot



- Four bedroom, Grade II Listed farmhouse
- Stone barns and a modern agricultural building with potential for alternative uses (stp)
- A truly hidden gem located in a peaceful yet accessible location
- Stunning, well-maintained pasture, orchards and woodland
- In all approximately 67.43 acres (27.28 hectares)

Guide Price: £1,210,000

Exeter Farms & Land Department
ian.caunter@kivells.com | 01392 252262

Farms Sale Agreed

KIVELLS

www.kivells.com

Sandenbury
Tregadillett, Launceston



- Smallholding in a lovely rural, yet accessible location
- Three bedroom bungalow (AOC) in need of modernising
- Range of pole barns
- Just over 40 acres of pasture land including some woodland
- A fantastic blank canvas
- EPC: D

Guide Price: £650,000

Holworthy Farms & Land Department
farms@kivells.com | 01409 259547

Sensham Farm
Marhamchurch, Bude



- Substantial modern farmhouse and separate first floor flat, both in need of modernisation
- Range of adaptable farm buildings with stabling
- Set in some 57 acres
- Not far from the North Cornish coast
- EPCs: D and F

Guide Price: £1,600,000

Holworthy Farms & Land Department
farms@kivells.com | 01409 259547

Farms Sale Agreed

KIVELLS

www.kivells.com

East Coombe Farm St. Pinnock, Liskeard



- Three bedroom, two bathroom, three reception room character detached house
- Splendid private location, with far reaching rural views
- Outbuildings with significant potential for alternative uses
- Located in rural East Cornwall between the wide expanses of Bodmin Moor and the South Cornish coastline
- In all 45.50 acres of land and woodland
- EPC: E & D

Guide Price: £900,000

Liskeard Farms & Land Department
liskeard@kivells.com | 01579 345543

Little Clamoak Farm Bere Ferrers, Yelverton

- Four bedroom bungalow (AOC)
- Adaptable range of farm buildings
- Sought after location
- In all approximately 26 acres
- Freehold with vacant possession available
- EPC F

Guide Price: £725,000

Exeter Farms & Land Department
exeter@kivells.com | 01392 252 262



Farms Sale Agreed

KIVELLS

www.kivells.com

Barton Moor
Meshaw, South Molton, Devon



- Three bedroom detached bungalow (AOC)
- Range of modern farm buildings with Class Q Permission for five dwellings
- Desirable and accessible location
- Freehold with vacant possession available
- In all about 4.22 acres
- EPC: 23 Band F

Guide Price: £495,000

Exeter Farms & Land Department
ben.hancock@kivells.com | 01392 252262

Land Sale Agreed

KIVELLS

www.kivells.com

Land off Blackacre Lane St Columb | Guide Price £150,000 - £155,000



Approx 12.87 acres comprising a single enclosure of gently sloping land currently in a temporary ley. In recent years has been used for arable and vegetable growing purposes.
Liskeard Farms & Land Agency
mark.bunt@kivells.com | 01579 345543

Land at Viverdon Down St. Mellion, Saltash | Guide Price £465,000



Just under 45 acres of productive pasture land in a very accessible location with lovely far reaching views.
Holsworthy Farms & Land Agency
farms@kivells.com | 01409 259547

Land forming Part Oldsbrim Lot 1 Poundsgate, Newton Abbot | Guide Price £150,000



Approximately 26.19 acres incorporating a block of permanent grassland together with areas of rough grazing.
Exeter Farms & Land Department
ian.caunter@kivells.com | 01392 252262

Land forming Part Oldsbrim Lot 2 Poundsgate, Newton Abbot | Guide Price £75,000



Approximately 12.62 acres incorporating three immaculate field parcels down to permanent pasture.
Exeter Farms & Land Department
ian.caunter@kivells.com | 01392 252262

Land at Upton Farm Lot 1 Delabole | Guide Price £500,000



Approx. 39.59 acres comprising a ring fence block of level or very gently sloping land currently in arable and temporary pastures contained in large, easy working, enclosures.
Liskeard Farms & Land Department
mark.bunt@kivells.com | 01579 345543

Land at Upton Farm Lot 2 Delabole | Guide Price £1,050,000



Approx. 88.25 acres comprising a block of level or very gently sloping land currently in arable and temporary pastures.
Liskeard Farms & Land Department
mark.bunt@kivells.com | 01579 345543

Land Sale Agreed

KIVELLS

www.kivells.com

Land at Chudleighs Barn Holding Liskeard | Guide Price £100,000 - £125,000



Approximately 20.19 acres of pasture and amenity land with pretty stream frontage and some woodland included.
Liskeard Farms & Land Department
mark.bunt@kivells.com | 01579 345543

Land at Huxhill Weare Giffard, Bideford | Guide Price £550,000



A productive run of good quality arable and pasture land in a favoured location extending to approximately 49.38 acres.
Exeter Farms & Land Department
ben.hancock@kivells.com | 07760 887581

Tregovenek Bungalow, Attwood Lane, Pensilva, Liskeard, Cornwall PL14 5QU

Kivells have been instructed to market Tregovenek, a detached three/four bedroom bungalow in a quiet rural location, close to the village of Bolventor, with good size outside space. The bungalow is subject to an Agricultural Occupancy Condition.

Enquiries to W M Bunt BSc MRICS FAAV, Kivells, 7-8 Bay Tree Hill, Liskeard, Cornwall PL14 4BE

Tel: 01579 345543 or 07879 640970. Email: mark.bunt@kivells.com.