

LIVE & ONLINE

MACHINERY

On Farm Dispersal

On behalf of
The Late Walter Millman

JULY

19

10:30am



MartEye

Chapel View, Milton Damerel, Holsworthy, EX22 7PB

DISPERSAL SALE OF TRACTORS, MACHINERY, IMPLEMENTS & EFFECTS

KIVELLSMACHINERY.MARTEYE.IE

01409 253253 | MACHINERY@KIVELLS.COM | WWW.KIVELLS.COM

Foreword

This important dispersal sale follows the decision of Grace Millman to disperse the lifetime collection belonging to the late Walter Millman.

Walter Millman was very well known in the area for his contracting and engineering skills. He held a remarkable reputation for his attention to detail and care for his machinery, tractors and implements.

We would like to take this opportunity in thanking Grace for her kind instructions in this important dispersal and wish her all the very best for the future as this collection finds new homes within and outside the area.

This dispersal should not be missed by those looking for agricultural bygoners as well as semi modern tractors and implements, we have it all at this sale.

We look forward to seeing you on the day and welcome you to a truly traditional dispersal of interesting agricultural artefacts and items.

Notice to Purchasers

Live and Online Auction Notice to Purchasers – Important Information On Farm Sales

(Live and Online – Auctioneer streamed live, taking bids from both the attendees and made by bidders online with occasional commission and telephone bids. This can be done by 1) sound + image of lot + bids or 2) screening of auctioneer + sound + image of lot + bids. Online bidders may be bidding through their smartphone, tablet, laptop, or desktop computer and are able to see all bids on screen throughout the sale.)

Your Kivells contacts: David Kivell: 07899 960272 & Holsworthy Machinery: 01409 253253

Date and Time of Sale: Saturday 19th July 2025 at 10:30am.

Sale Location: Chapel View, Milton Damerel, Holsworthy, EX22 7PB

1. **Registration and Bidding online-** Online bidding is via Marteye, intending bidders must download the MartEye App from your phone App store where you can register. Once you have downloaded the App you need to go on the Kivells Machinery Page and **Sign in** with your details and then click the **Join** button. You can also access MartEye through **kivellsmachinery.marteye.ie** where you will be directed straight to our page and you will be required to **Sign in** with your details and then click the **Join** button. Once you have done this process your application will come through to us for approval. **We strongly advise registering well ahead of the sale as 'late' registrants, on the morning of sale, run the risk of not being approved in time. Kivells recommend that bidders register and satisfy Kivells regarding payment capability on or before Friday 18th July. Overseas bidders should contact Kivells accounts office at the earliest opportunity.**
2. **Registration and Live Bidding** - All those attending the sale in person will be required to register in the Kivells Pay Office, prior to inspecting the lots, whereby you will obtain a Bidding Card. The Bidding Card will be used to bid on the sale items. Failure to register may mean your bid may not be acceptable and slow the sale for all other attendees. Kivells recommend that you arrive early on the sale day in order to register and minimise queuing time. Attendees on the Monday viewing can register that day. A registration form is included in the catalogue to enable on site attendees to speed up the process.
3. **Commission Bids-** Kivells encourage the use of the Bidding Form which forms part of the catalogue and phone bids may be possible - please contact the Auctioneers regarding this the week before the sale.
4. **Registration and Conditions of Sale** - Kivells reserve the right to request additional information to include Driving License/Passport together with a Business Card/Utility Bills/Proof of Address/Business Letter Heading and the right to request a deposit ahead of any purchase or during sale proceedings. Kivells also reserve the right to deregister Buyers. It is strongly recommended that Bidders and Buyers read Kivells Standard Terms and Conditions of Sale ahead of the sale. Once you have registered you are confirming that you have read, agree with and will abide by those Conditions and these Notice to Purchasers. In registering you warrant that the information is correct, up to date on the sale closure date and you are over the age of 18. All registrations are provisional and subject to the approval by Kivells.
- 4a. **We advise the following-** To take part in this sale you may be required to pay an initial deposit in order to bid and this applies both to attendees on site and to online bidders. If you are unknown to Kivells or have not traded with Kivells for the last 12 months then you will be deemed to be a new buyer. All new buyers will be required to pay a deposit.

The minimum deposit payable is £500. In all other instances a 10% deposit of anticipated max bid amount is required. Should your bid exceed any anticipated bid spend then Kivells reserve the right to request additional funds during the sale event. Kivells are the sole arbiters as to the amount payable.

Deposits must be paid in cleared funds at least 24 hours before the sale day by BACS transfer or Debit Card payment. Alternatively cash payments can be made on site, on the day of sale, subject to Anti-Money Laundering regulations.

Notice to Purchasers

A minimum deposit of £500 is required which allows a credit limit of £5,000 or 10% of the anticipated purchase price.

Deposits must be received in cleared funds via any of the following methods:

- **Online payment**
- **Cash** – acceptable on auction day – subject to Anti-Money Laundering Regulations
- **Personal Debit Card** – acceptable on auction day
- **Bank Transfer** – must be received before a bidder number can be assigned. Please see bank details below.

Kivells Bank details for the non-interest-bearing client account are:

Kivells Ltd Client Account
Sort Code 56-00-49
Account Nom 32532822

In paying a deposit you are confirming you have read and agree with Kivells Terms and Conditions.

Successful Buyers - The deposit will be taken as part of the total purchase price.

Unsuccessful Bidders – The full deposit will be returned within 10 days to the bank account details you provide below.

Bank Name; Account Holders Name; Sort Code; Account Number

Please note- the deposit will only be returned to the bank account from which the monies were received.

5. **Lot Viewing** – Viewing is permitted on the designated dates and times only unless previously agreed with the auctioneers. When inspecting lots, we encourage you to maintain a safe social distance.

Viewing Date(s) and Times are: Morning of Sale from 8:30am

6. **Health & Safety** - Kivells do not accept any liability for any damage or injury to persons, vehicles, plant, machinery, equipment or any lot not arising out of their negligence. When lots are located on The Sellers premises or 3rd party storage facilities then the aforementioned are responsible for Health & Safety. Any person entering the Saleground does so at their own risk, must comply with the requirements of any Health and Safety notices and guidelines and be appropriately dressed. Please ensure you maintain a safe social distance. All persons entering the premises are hereby given notice that there are significant risks due to the range and display of equipment, vehicle movement and the nature of the premises. Caution should be exercised and children must be fully supervised at all times. Permission from the Auctioneers / Seller or storage facility manager is required ahead of starting powered equipment or machinery. Any incidents or accidents on the premises should be reported to Kivells/Seller or storage facility manager immediately. Kivells reserve the right for themselves and their Sellers and 3rd party storage facilities to refuse admission to any person or vehicle into the Saleground without giving reason. The Auctioneers also reserve the right for themselves and the Sellers and 3rd party storage facilities to halt any removal in the event there are concerns over the Buyer's or their contractor's capability and methods. The right extends to requesting confirmation of insurance cover, method statements and other assurances to include returnable deposits.
7. **Loading:** Loading of sold lots during the sale in the sales field will NOT be permitted unless Kivells give permission and have personnel available for crowd control and other safety purposes. To enable loading to occur all attendees are requested to follow the mobile sale rostrum and move away from the sold rows. In any event **loading will not be permitted before 12 noon on the sale day.**
8. **Descriptions of Lots** - Kivells has limited access to lots prior to sale and therefore Buyers should satisfy themselves prior to making bids as to the condition of any Lot and should rely on their own judgement as to whether the Lot accords with its description. All Lots are sold with all faults and imperfections and errors of description. All statements are the Auctioneers or Sellers opinion and are not statements or representations of facts. You do not have to bid.

Notice to Purchasers

9. **Payment - Currency GBP** – Onsite Attendees - Day of Sale: Online Bidders - The auctioneers will either 1) contact you on day of sale for immediate payment or 2) will email an invoice on the first weekday following the close of the sale. Email payment is thereafter due no later than 24 hours from the time of forwarding the invoice. Payments will be due in full at the final bid price in respect of the lot sold plus all associated costs, Buyers premium and VAT. Finance should be agreed before the sale. Failure to have finance in place does not negate the Buyers obligation to pay.

Payment will only be accepted from the successful purchaser or their duly appointed agent. Any payment is to be by a means approved by the Auctioneers and include the Buyers Commission and VAT. Our terms are strictly cash, Bank Transfer, Debit Card, **NO** Credit Cards are accepted.

Our Bank Account details are: Sort Code 56-00-49 Account Number 32532822.

10. **Payment in Cash** - In order to comply with money laundering regulations The Auctioneers will not accept Cash payments above the maximum permitted at the time of sale. The maximum varies according to exchange rates and currently it is circa £7,000 - £9,000. Buyers are advised to check with the Auctioneers ahead of the sale.

11. **Commission/Buyers Premium** - All Lots will be subject to a Buyers Commission / Premium whether sold by auction, by private treaty or tender pre or post sale. VAT at the standard rate will be charged on all commissions. Buyers shall pay Commission to the Auctioneers at the following rates:

- **10% on any single lot up to and including £2000**
- **5% on any single lot over £2000 & up to a maximum of £30,000**
- **Any single lot over £30,000 will be subject to a commission 'cap' of £1500**
- **Any single lot over £40,000 will be subject to a commission cap of £2000**

Currency GBP

All Bidders on Marteye will be paying an additional 1% (subject to a maximum sum of £500) plus VAT per lot for the use of this service.

12. **Risk** - All lots remain at the risk of the Buyer from the fall of the hammer/closure of bidding for each lot and it is strongly advised that the Buyer effects insurance immediately.

13. **Collection of Lots** - All lots must be removed from the Saleground by 2pm on Tuesday 22nd July (unless other arrangements have been made with the seller or the auctioneers). When removing lots, please ensure you maintain a safe social distance. Lots can only be removed once full payment has been made. The Buyer is responsible for the collection of their lots and any associated costs of transport. Assistance with loading by The Auctioneers, Seller or the storage facility is given without any liability to The Buyer or The Buyers removal contractor. Buyers are strongly advised to use their own suitably qualified and insured contractors.

14. **Handler** - Assistance with loading will be available for the stated clearance period. Given the number and size of some of the lots Kivells advise purchasers to make their collection arrangements known to Kivells on the day of sale. Any items left at the sale premises are done so entirely at the purchaser's own risk.

15. **Value Added Tax** - Please be aware some lots may be subject to VAT and therefore VAT will be charged in accordance to the current rate and added to all accounts and is applicable to the Commission/Buyers Premium. VAT status will be clearly stated in the Lot description.

16. **Export of Lots** - All goods purchased from Kivells auctions that are to be exported or removed from the United Kingdom will:

1. Be dealt with under the requirements set out of HM Customs and Excise publications:

a) VAT Notice 703 dated January 2021 – Goods exported from the UK from 1st January 2021.

2. Be Zero rated for VAT purposes subject to the following conditions being met.

a) The goods are removed from Great Britain within three months from the time of supply (the date of auction).

b) Kivells are provided with valid written evidence that the Lots have been removed from Great Britain within three months of the auction closure date. Unless and until the above requirements are fulfilled Purchasers will be charged

Notice to Purchasers

VAT at the Great Britain standard rate (currently 20%). This will only be refunded if all requirements within the regulations are met within the specified time limits.

The Purchaser or their agent will be responsible for removing the Lots from Great Britain and will act as the importer of record and will be responsible for payment of any VAT, duties, goods and services tax, or other sales or import taxes or duties arising on the exportation of the goods from Great Britain and the importation of the goods into any country.

Neither Kivells or the Seller are responsible for any VAT, duties, goods and services tax, or other sales or import taxes or duties arising on the exportation of the lots from Great Britain and the importation of the lots into any country by the Purchaser or their agent.

Kivells recommend exporters visit <https://www.gov.uk/check-customs-declaration>

ANY PHYTOSANITARY CERTIFICATION AND DOCUMENTATION REQUIRED TO EXPORT LOTS FROM GREAT BRITAIN ARE STRICTLY THE RESPONSIBILITY OF THE PURCHASER.

ONLINE BIDDING AVAILABLE

Simply Download the **MartEye App** from your phone App Store & Register.
Then press the **JOIN** button on the **Kivells Machinery Page**

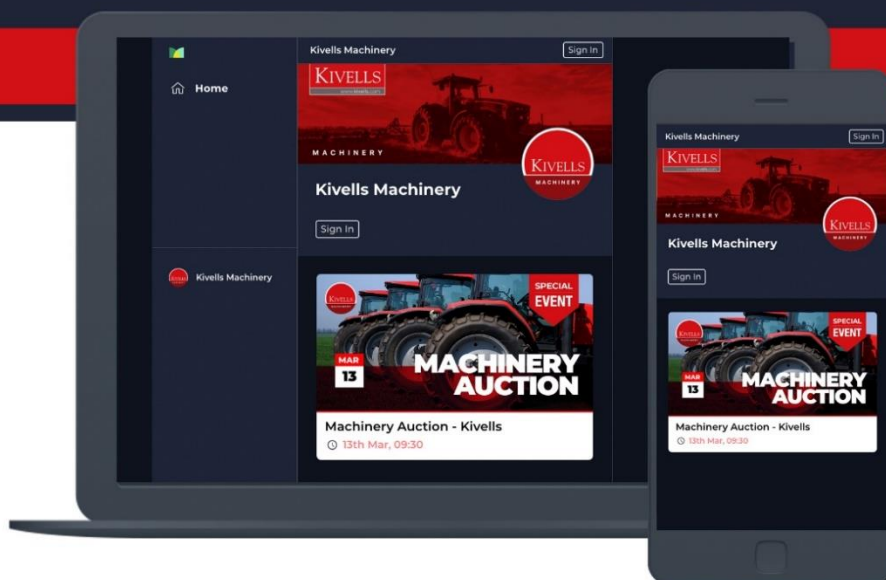
Your full details will be required for using online bidding and a trading reference **MUST** be provided prior to the sale day if you are not known to the Auctioneers. Applications made on the sale day for online bidding run the risk of not being approved. All buyers must ensure they have transport arranged prior to the Sale. All lots must be paid for prior to them leaving the Market.

Please Contact:
Holsworthy Market on **01409 253275**



ALSO AVAILABLE ON WEBSITE:

kivellsmachinery.marteye.ie

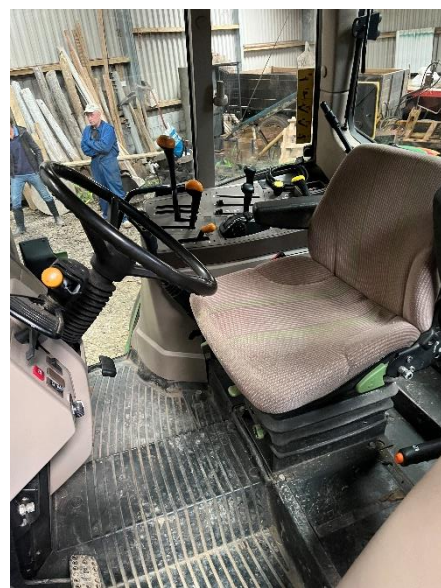


2004 John Deere 6120

Hours: 5,028

Registration- WA54 FEO

with 551 loader, 4WD



1988 John Deere 3650

Hours: 10,256

Registration: F637 EHH

4WD



1983 John Deere 2140

Hours: 7,632

Registration: A168 YBL

2WD



1968 Massey Ferguson 165

Registration: MT4 52F

With loader, weight & bale spike, 2WD, one owner since new, good working order



2008 Kubota RTV 900

Hours: 2,917

Registration: PX08 EOK



Bale trailer

Length: 22ft



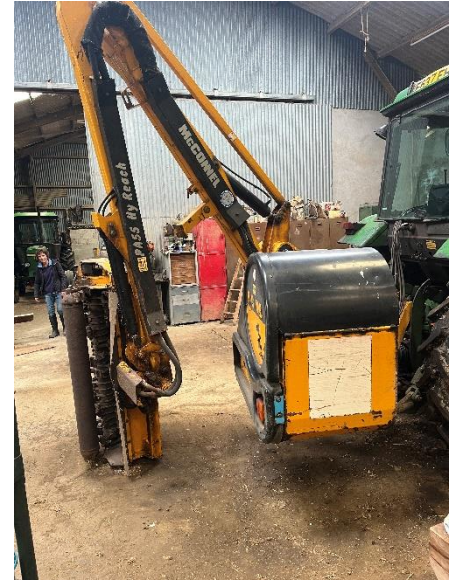
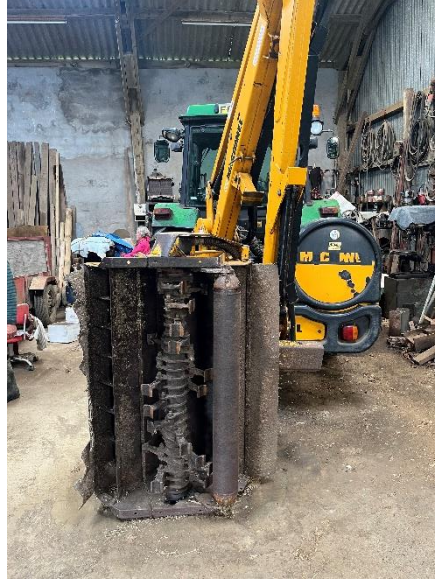
Tipping trailer



McConnel hedge trimmer

Model: PA55

Hy-Reach



Cambridge roller



Ballast roller



Twose dung grab

Size: 5ft



Parmiter bale squeeze



Qty of buckets



Further items

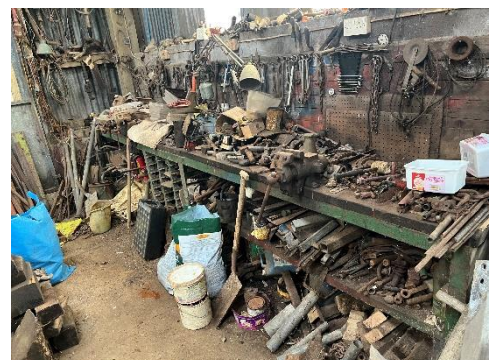
Machinery & Implements

- Perry bale handler
- PTO driven post hole borer
- Tipping bucket
- Yard scrape
- Deep digger single furrow plough
- Hedge plough
- Chain harrows
- Log splitter

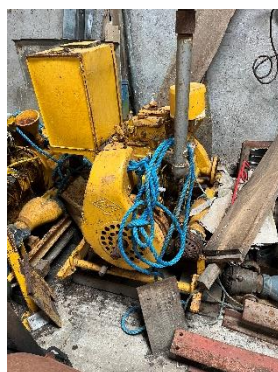
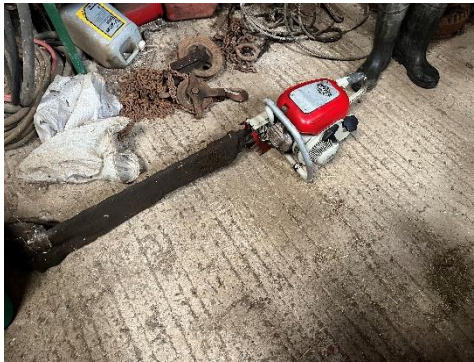
Sundries

- Fowler - Sanders engine
- Single phase compressor
- Drill
- Qty of timber
- Qty of steel
- Fencers
- Knapsack sprayer
- Qty of milk churns
- Flymo mower
- Mitre saw
- Battery charger
- Various motors / compressors
- Various grinders
- Various belts
- Workshop items
- Stihl chainsaw
- Various front tractor weights
- Generator
- Fencing stakes
- Gate posts

Further items



Further items



Hauliers

We have listed below a number of haulage companies.

It is the responsibility of the buyers to make their own arrangements to remove their lots and contact with their chosen haulier.

<u>Haulier</u>		
PR Weldhen	Newquay	01637 880087
A & B Contractors	Barnstaple	01271 882006
Nick Sampson	Barnstaple	01271 376701
Bob Davies Transport Ltd	Taunton	07977 504506
LG Haulage (light haulage)	Holsworthy	07787 450581
Cains Farm Ltd	Dorset	01297 489537
Simon Ford Transport	Newton Abbot	07970 818083
A T Bone & Sons Ltd	Hertfordshire	01707 642178

**** PLEASE NOTE **** there is limited access to Chapel View. Please contact Kivells prior to booking Haulage to discuss access.

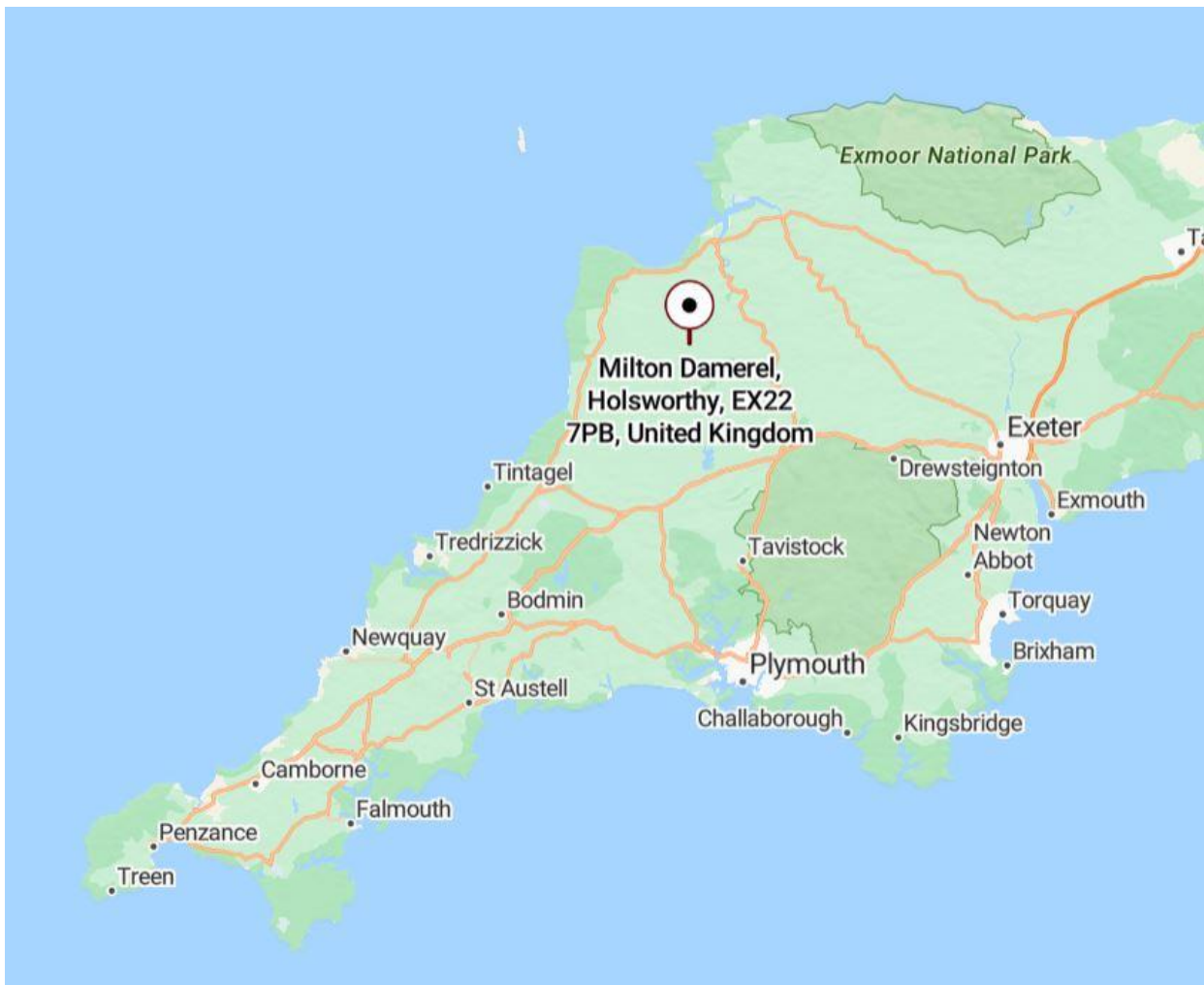
Directions

Chapel View, Milton Damerel, Holsworthy, EX22 7PB

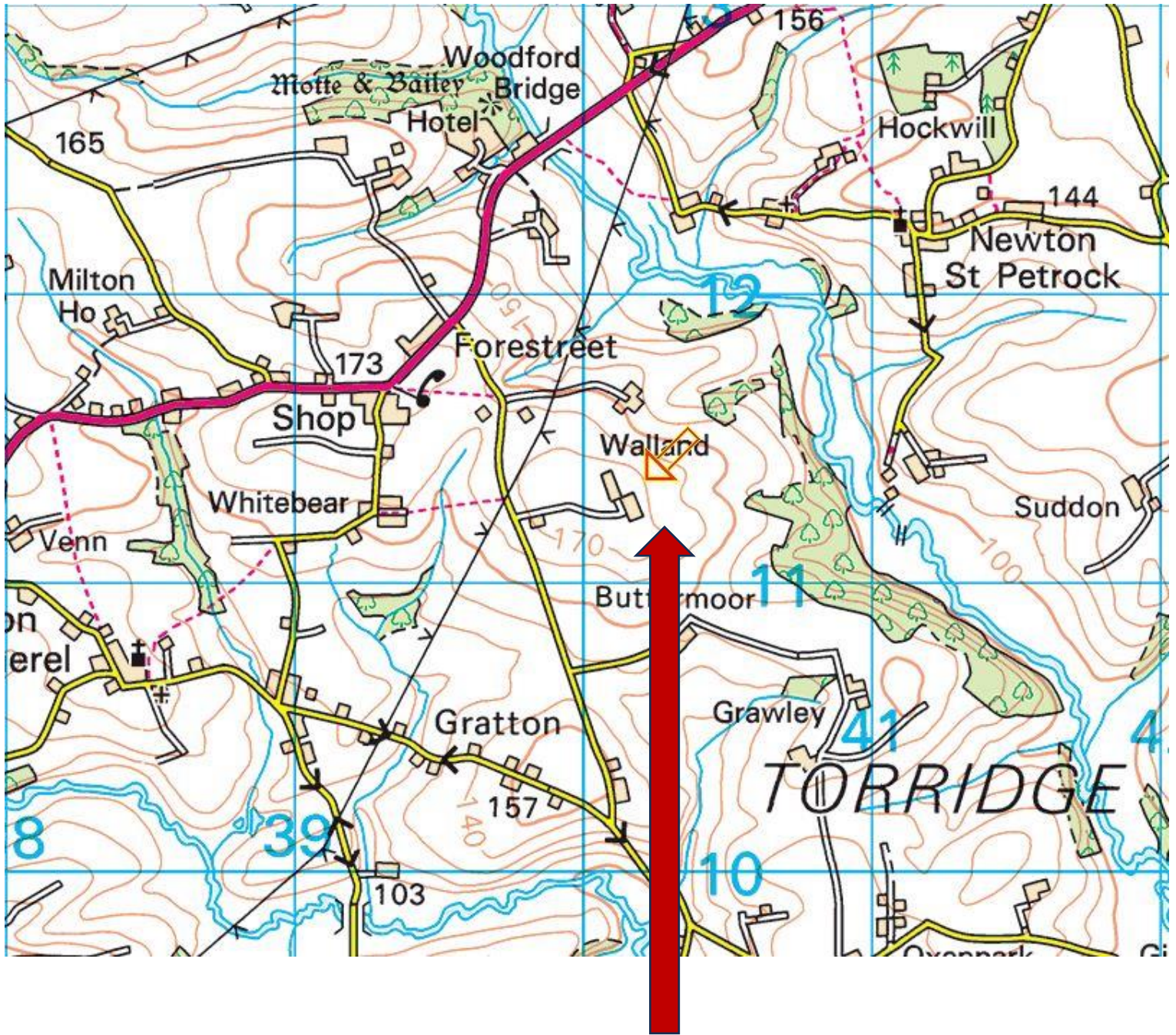
What3Words: cuddling.lightbulb.speaks

From Holsworthy-

From Holsworthy, take the A388 towards Stibb Cross/ Bideford. Follow this road for 6.9 miles, passing Horrelsford Garage on your right. Once you have passed Horrelsford Garage, you will have 2.2 miles until you have to turn right. Turn right signposted Thornbury, Shebbear, Bradford. Follow this road for 0.8 miles and Chapel View will be on your left.



Directions



Chapel View, Milton Damerel,
Holsworthy, EX22 7PB

Notes

KIVELLS

www.kivells.com

EXCLUSIVE MACHINERY DISPERSAL SALE

On behalf of Windemer Contractors Limited



PRECISION, POWER AND PERFORMANCE

Near Tavistock | W3W: grid.umbrellas.climber

Saturday 27th September 2025

Starts at 10:30 a.m.



A SALE NOT TO BE MISSED!



01409 253253

machinery@kivells.com



MartEye™

www.kivells.com | 01409 253253 | machinery@kivells.com

2025 SALE DATES



Monthly Live & Online Collective Sales
of Machinery, Vehicles & Implements

Holsworthy Market

SATURDAY 2ND AUGUST

SATURDAY 6TH SEPTEMBER

SATURDAY 4TH OCTOBER

SATURDAY 1ST NOVEMBER

SATURDAY 6TH DECEMBER

In addition to on-farm sales held throughout the year covering the whole of the South West

See our website for more info!

WWW.KIVELLS.COM | CALL: 01409 253253 | EMAIL: MACHINERY@KIVELLS.COM

KIVELLSMACHINERY.MARTEYE.IE

Tradition Meets Technology

Our team of Machinery Auctioneers & Coordinators are at hand to sell your farm machinery whether it be on site, online or at one of our many collective auctions conducted throughout the South West and beyond.



Kivells Machinery & Equipment Sales Online | On Site | On Market Premises

- 'Our expertise centres around the agricultural sector and as our clients have diversified so have we.'
- We sell a huge range of machinery and equipment both into and out of the sector.
- Our online service offering is market leading and the feedback we have received both from our vendors and buyers bears that out. We are proud of our reputation and we are confident the choice of MartEye as Kivells online service partner will add to that.
- Our policy is to offer the best online capability combined with tried and tested traditional methods. We recognise the role auctions play in the agricultural community enabling people to gather and meet and the wellbeing benefits that brings. It is all about achieving the right balance in a safe environment and at the same time maximise the realisation for our vendors and ease of use for our buyers. We believe Kivells combination of market leading sales technology and respect for tradition does just that.'

Thinking of Selling? Feel free to contact me or any of our team for a confidential discussion. It is never too early to plan and prepare'.

David Kivell
Head of Machinery & Heritage Department

www.kivells.com | machinery@kivells.com

Holsworthy Livestock Market,
New Market Road, Holsworthy, Devon EX22 7FA
01409 253253

Exeter Livestock Centre,
Matford Park Road, Exeter, Devon EX2 8FD
01392 251261

