

LIVE &  
ONLINE

# Monthly Live & Online Machinery Sale HOLSWORTHY LIVESTOCK MARKET

## Saturday 11<sup>th</sup> April 2026 SALE REPORT



***1800 lots in the yard  
for this month's  
machinery sale which  
achieved a very strong  
90% clearance!  
Topping call of the day  
was £24,000!***



HOLSWORTHY LIVESTOCK MARKET, NEW MARKET ROAD, HOLSWORTHY, DEVON EX22 7FA  
WWW.KIVELLS.COM | CALL: 01409 253253 | EMAIL: MACHINERY@KIVELLS.COM | WHATSAPP: 07399 298995  
**KIVELLSMACHINERY.MARTEYE.IE**

## 700 Tractors, Machinery & Effects – Auctioneer: David Kivell & Charlie Kivell

**700 lots on offer in this section achieving an 88% clearance  
with 70% receiving online bids and 41% won online!**

Top call of the day was for a 2017 Landini 5-110 H c/w loader with 1700 hours on the clock making £24,000 followed by the 2014 Landini from the same farm with 3700 hours on the clock at £20,800. Another 2008 Landini 135 Land Power in from a different farm made £18,600. Other tractors on the day reached £16,000 for the Case JX90 c/w Trima loader, £7,000 for the Carter 2.5tn mini digger and £3,400 for the Kioti compact tractor.

Another strong line up of trailers this month topped with the very tidy Roland silage trailer at £16,500, an AW bale trailer at £3,700, Graham Edwards 14ft livestock trailer to £3,400 and many others between £2,000-£3,000.

Topping the machinery entries was the McHale HS2000 bale wrapper at £7,100, Spearhead Twiga hedge cutter to £5,400, Krone twin rake to £4,400, John Deere 680 baler to £4,200 and plenty of other machines making between £2,000-£4,000.

Yet another enormous line up of vehicles in this month with the best hitting £3,900 for a 2013 Mitsubishi L200 Barbarian with 94,000 miles on the clock and MOT until August. We want to stress again to our vendors of vehicles in particular to let us know your entries as soon as possible so we can get them advertised for you ahead of the sale.



## REMINDER TO SELLERS

Please take advantage of our FREE advertising by booking in your goods well ahead of the sale!  
Everyone MUST complete an entry form, complete yours prior to arrival to save time on the day.

### 727 Smaller Machinery & Goods – Auctioneers: Tim Kivell, Ryan Walter & Josh Tilley

An outstanding entry of over 700 lots with the top of the day in this section being £170 for a Wacker plate. The next item then realised £160 for a stomp 125 pit bike which was then followed by a Hyundai petrol mower which made £155. We then saw 2 Stihl chainsaws reaching £130 & £125 then a log splitter wasn't far behind making £110. 3 lots of Hardwood logs dry ash realised £80 and a quantity of milk churns went under the hammer for £70.

#### NEXT SALE

Our next collective machinery sale at Holsworthy will be on **Saturday 9<sup>th</sup> May**.  
Submit your entries in good time for free advertising ahead of the sale.

Contact us on 01409 253253 / [machinery@kivells.com](mailto:machinery@kivells.com)

### 372 Pet Food & Supplies– Auctioneer: Charlie Kivell

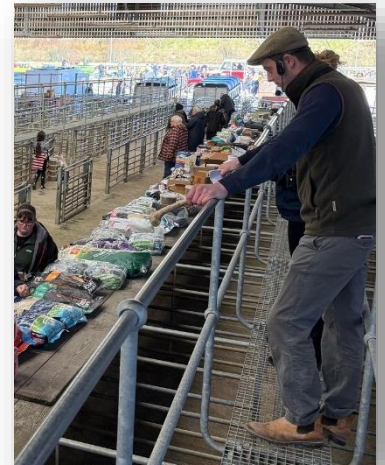
Another large entry on offer this month achieving 100% clearance with plenty of bargains to be had all round!

Top price was £20 for a large dog bed followed by £17 for John Wellbeloved adult dog food, other dog supplies saw £16 for John Wellbeloved puppy, price matched by another dog bed, £15 for JWB senior food and again for JWB puppy.

Lots for the birds too this sale, topping at only £16 for a 20kg bag of sunflower hearts, £16 for a big seed feeder, £15 for bag of Peckish bird seed, £11 for 25kg peanuts with plenty of other feed available below £10!

#### NEXT SALE

Our next pet food sale at Holsworthy Market is  
on **Saturday 9<sup>th</sup> May**.



# 2026 SALE DATES

SATURDAY 9<sup>TH</sup> MAY

SATURDAY 13<sup>TH</sup> JUNE

SATURDAY 4<sup>TH</sup> JULY

SATURDAY 1<sup>ST</sup> AUGUST

SATURDAY 5<sup>TH</sup> SEPTEMBER

SATURDAY 3<sup>RD</sup> OCTOBER

SATURDAY 7<sup>TH</sup> NOVEMBER

SATURDAY 5<sup>TH</sup> DECEMBER

Monthly Live & Online Collective Sales  
of Machinery, Vehicles & Implements

*Holsworthy Market*



See our calendar for  
full list of events



~ In addition to on-farm sales held throughout the year covering the whole of the South West

*See our website for more info!*

# Tradition Meets Technology

Our team of Machinery Auctioneers & Coordinators are at hand to sell your farm machinery whether it be on site, online or at one of our many collective auctions conducted throughout the South West and beyond.



## Kivells Machinery & Equipment Sales Online | On Site | On Market Premises

- 'Our expertise centres around the agricultural sector and as our clients have diversified so have we.
- We sell a huge range of machinery and equipment both into and out of the sector.
- Our online service offering is market leading and the feedback we have received both from our vendors and buyers bears that out. We are proud of our reputation and we are confident the choice of MartEye as Kivells online service partner will add to that.
- Our policy is to offer the best online capability combined with tried and tested traditional methods. We recognise the role auctions play in the agricultural community enabling people to gather and meet and the wellbeing benefits that brings. It is all about achieving the right balance in a safe environment and at the same time maximise the realisation for our vendors and ease of use for our buyers. We believe Kivells combination of market leading sales technology and respect for tradition does just that.'

Thinking of Selling? Feel free to contact me or any of our team for a confidential discussion. It is never too early to plan and prepare'.

**David Kivell**  
Head of Machinery & Heritage Department

[www.kivells.com](http://www.kivells.com) | [machinery@kivells.com](mailto:machinery@kivells.com)

Holsworthy Livestock Market,  
New Market Road, Holsworthy, Devon EX22 7FA  
01409 253253

Exeter Livestock Centre,  
Matford Park Road, Exeter, Devon EX2 8FD  
01392 251261