

LIVE &  
ONLINE

# Monthly Live & Online Machinery Sale HOLSWORTHY LIVESTOCK MARKET

## Saturday 9<sup>th</sup> May 2026 SALE REPORT



*1430 lots in the yard  
for this month's  
machinery sale which  
achieved an  
impressive 92%  
clearance!*



## 503 Tractors, Machinery & Effects – Auctioneer: David Kivell & Charlie Kivell

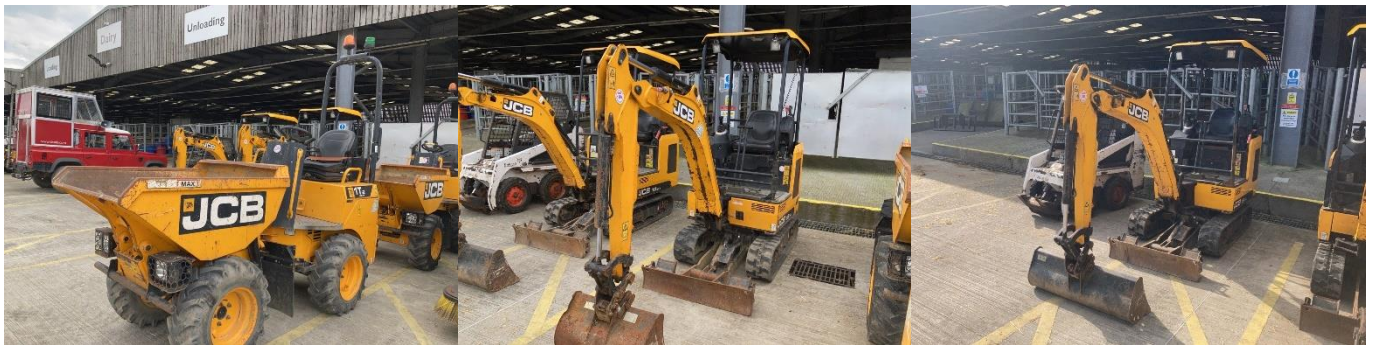
**503 lots on offer in this section  
with 70% receiving online bids and 41% won online with 197 new online bidders!**

Top call of the day was £16,400 for a 2019 Renault C430 8x4 insulated tipper with MOT until July 2026 and 543,000km on the clock. A tidy example of a Ford 7840 with 5,092 genuine hours on the clock topped out at £14,300. A 2021 JCB 1T high tip dumper with only 1,593 hours on the clock achieved £7,000. Matching the trade was a 2021 JCB 182 excavator with 1,776 hours on the clock, closely followed by a 2019 JCB 16C excavator with 2,617 hours on the clock topping out at £6,800. A 2012 Kubota 45 240 tractor coming in locally topped out at £4,800.

Another strong line up of trailers this month topped with a 2011 21ft Herbst 15T low loader trailer which sold for £6,400. A 25ft Staines bale trailer with new floor went under the hammer for £6,200.

A varied selection of steel framed buildings on offer this month with a 90 x 4 x 15 kit building topped out at £8,000, followed by £4,200 for a 45 x 25 x 14 kit building. Matching the same trade was a £60 x 30 x 15 kit building. A 45 x 30 x 12 kit building went under the hammer for £3,300.

A quieter sale for the vehicles this month with 18 on offer. Top call in this section was £4,800 for a 2000 Toyota Landcruiser with MOT until December and 240,200 miles on the clock.



## REMINDER TO SELLERS

Please take advantage of our FREE advertising by booking in your goods well ahead of the sale!  
Everyone MUST complete an entry form, complete yours prior to arrival to save time on the day.

## 729 Smaller Machinery & Goods – Auctioneers: Tim Kivell, Ryan Walter & Josh Tilley

An outstanding entry of over 700 lots with the top of the day in this section being £170 for a Wacker plate. The next item then realised £160 for a stomp 125 pit bike which was then followed by a Hyundai petrol mower which made £155. We then saw 2 Stihl chainsaws reaching £130 & £125 then a log splitter wasn't far behind making £110. 3 lots of Hardwood logs dry ash realised £80 and a quantity of milk churns went under the hammer for £70.

### NEXT SALE

Our next collective machinery sale at Holsworthy will be on **Saturday 13<sup>th</sup> June**.  
Submit your entries in good time for free advertising ahead of the sale.

Contact us on 01409 253253 / [machinery@kivells.com](mailto:machinery@kivells.com)

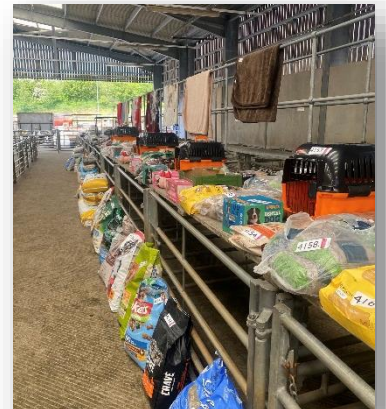
## 202 Pet Food & Supplies– Auctioneer: Charlie Kivell

A smaller entry of pet food this month but still a similar trade to last month.

James Wellbeloved topped out at £20 on the dog food with Beta adult at £15 and Skinners at £14. Bags of Peanuts made £12 and Natures Deli Treats came in at £10. Other smaller lots of dog food saw James Wellbeloved tins at £11, Collards Lamb and Hills Adult at £10.

### NEXT SALE

Our next pet food sale at Holsworthy Market is  
on **Saturday 13<sup>th</sup> June**.



# 2026 SALE DATES

KIVELLS  
MACHINERY

Monthly Live & Online Collective Sales  
of Machinery, Vehicles & Implements

SATURDAY 13<sup>TH</sup> JUNE

SATURDAY 4<sup>TH</sup> JULY

SATURDAY 1<sup>ST</sup> AUGUST

SATURDAY 5<sup>TH</sup> SEPTEMBER

SATURDAY 3<sup>RD</sup> OCTOBER

SATURDAY 7<sup>TH</sup> NOVEMBER

SATURDAY 5<sup>TH</sup> DECEMBER

*Holsworthy Market*

See our calendar for  
full list of events



~ In addition to on-farm sales held throughout the year covering the whole of the South West

*See our website for more info!*

# Tradition Meets Technology

Our team of Machinery Auctioneers & Coordinators are at hand to sell your farm machinery whether it be on site, online or at one of our many collective auctions conducted throughout the South West and beyond.

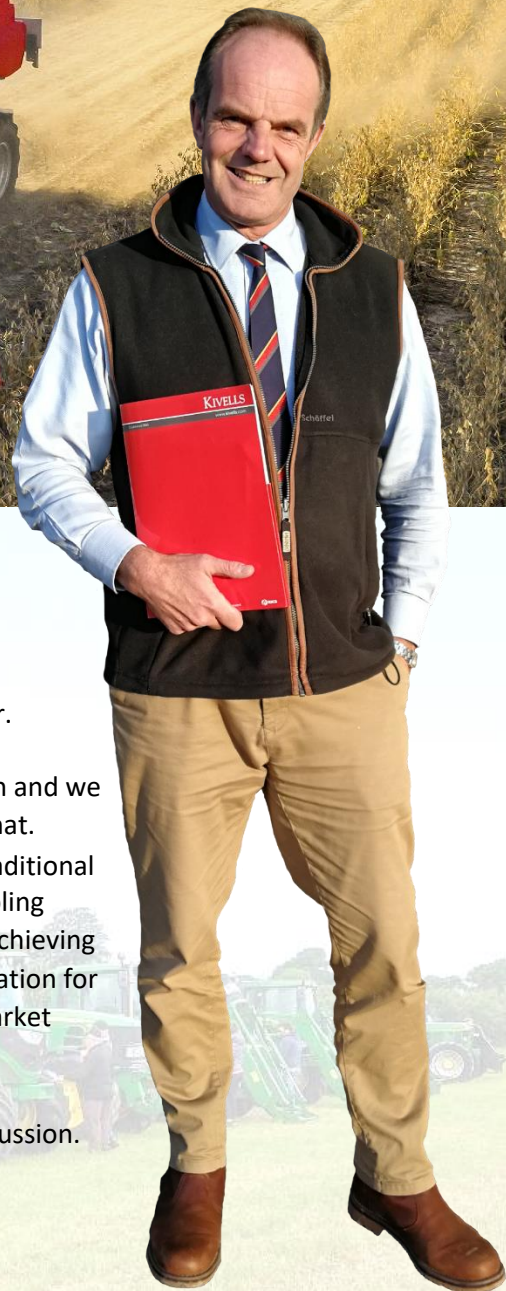


## Kivells Machinery & Equipment Sales Online | On Site | On Market Premises

- 'Our expertise centres around the agricultural sector and as our clients have diversified so have we.
- We sell a huge range of machinery and equipment both into and out of the sector.
- Our online service offering is market leading and the feedback we have received both from our vendors and buyers bears that out. We are proud of our reputation and we are confident the choice of MartEye as Kivells online service partner will add to that.
- Our policy is to offer the best online capability combined with tried and tested traditional methods. We recognise the role auctions play in the agricultural community enabling people to gather and meet and the wellbeing benefits that brings. It is all about achieving the right balance in a safe environment and at the same time maximise the realisation for our vendors and ease of use for our buyers. We believe Kivells combination of market leading sales technology and respect for tradition does just that.'

Thinking of Selling? Feel free to contact me or any of our team for a confidential discussion. It is never too early to plan and prepare'.

**David Kivell**  
Head of Machinery & Heritage Department



[www.kivells.com](http://www.kivells.com) | [machinery@kivells.com](mailto:machinery@kivells.com)

Holsworthy Livestock Market,  
New Market Road, Holsworthy, Devon EX22 7FA  
01409 253253

Exeter Livestock Centre,  
Matford Park Road, Exeter, Devon EX2 8FD  
01392 251261