

LIVE & ONLINE

ON FARM PREMIER MACHINERY DISPERSAL SALE

OF A SIGNIFICANT PORTION OF FARM MACHINERY

Over 500 lots anticipated



MartEye™

On behalf of
Wills Brothers Limited



JUNE

24

10:30am

Pawton Dairy, St. Breock, Wadebridge. PL27 7LR

DISPERSAL SALE OF TRACTORS, MACHINERY, IMPLEMENTS & EFFECTS

KIVELLSMACHINERY.MARTEYE.IE

01409 253253 | MACHINERY@KIVELLS.COM | WWW.KIVELLS.COM

Foreword

We have known the Wills family for many years. They have been loyal clients to Kivells selling their dairy cattle and calves through our markets or by special herd reduction events. The reputation of their herd extends worldwide. The restructuring of the Wills Brothers business comes at a time when all farming families are looking to adapt and are planning for the future.

We are extremely privileged to have been invited to conduct this highly important fixture in our machinery sale calendar. It is certainly one that is up there as one of the very best we have been asked to conduct and we are very grateful to the whole family for their unstinting loyalty over many years and their instructions in this sale.

The quality, range and condition of the machinery is outstanding. Many of the brands involved are market leaders and is testament to the family for their careful machinery buying and planning which has evolved over many years of farming 1500 acres at and around Pawton.

The main items in this sale offer a great opportunity for buyers to purchase for the long term due to the modern range of equipment.

Foreword

This catalogue captures most of the equipment, but the full content of this sale will be listed via our online bidding platform **MartEye**

We cannot recommend highly enough your attendance at this exclusive sale on behalf of Wills Brothers Limited and again would like to express our indebtedness to the family and look forward to seeing you on the day which will certainly be the highlight of our sales calendar so far this year. We would like to take this opportunity to wish all members of the family our sincere best wishes for the future.

We ask that those attending the viewing and sale days follow all Health & Safety rules and signage and all interested parties take time to read the Notice to Purchasers.



Sale Day Contacts



Mark Bromell

Director / Auctioneer

07966 430001



David Kivell

Auctioneer

07899 960272



Tim Kivell

Auctioneer

07788 281900



Charlie Kivell

Machinery Sales Co-
Ordinator

07794 000325



Lauren Dennis

Machinery Sales Co-
Ordinator

07399 298995

Tom Wills: 07968 808752

Ben Wills: 07852 549402

Robert Wills: 07980 011856

Bidding Facilities & Bidding

Please use the bidding form provided to fill out your information prior to the sale to ensure a prompt service at our Kivells Sales Office.

Please note-

- Due to our dairy sale on Monday 30th June, all items are to be collected by Friday 27th June 2025.
- We will have an indoor bidding hub available.
- No bid will be accepted without a bidders number.



Notice to Purchasers

Live and Online Auction Notice to Purchasers – Important Information On Farm Sales

(Live and Online – Auctioneer streamed live, taking bids from both the attendees and made by bidders online with occasional commission and telephone bids. This can be done by 1) sound + image of lot + bids or 2) screening of auctioneer + sound + image of lot + bids. Online bidders may be bidding through their smartphone, tablet, laptop, or desktop computer and are able to see all bids on screen throughout the sale.)

Your Kivells contacts: David Kivell: 07899 960272, Tim Kivell: 07788 281900, Holsworthy Machinery: 01409 253253

Vendor Contact: Tom Wills: 07968 808752, Ben Wills: 07852 549402, Robert Wills: 07980 011856

Date and Time of Sale: Tuesday 24th June 2025 at 10.30 am

Sale Location: Pawton Dairy, St Breock, Wadebridge, PL27 7LR

1. **Registration and Bidding online-** Online bidding is via Marteye, intending bidders must download the MartEye App from your phone App store where you can register. Once you have downloaded the App you need to go on the Kivells Machinery Page and **Sign in** with your details and then click the **Join** button. You can also access MartEye through **kivellsmachinery.marteye.ie** where you will be directed straight to our page and you will be required to **Sign in** with your details and then click the **Join** button. Once you have done this process your application will come through to us for approval. **We strongly advise registering well ahead of the sale as 'late' registrants, on the morning of sale, run the risk of not being approved in time. Kivells recommend that bidders register and satisfy Kivells regarding payment capability on or before Friday 20th June. Overseas bidders should contact Kivells accounts office at the earliest opportunity.**
2. **Registration and Live Bidding** - All those attending the sale in person will be required to register in the Kivells Pay Office, prior to inspecting the lots, whereby you will obtain a Bidding Card. The Bidding Card will be used to bid on the sale items. Failure to register may mean your bid may not be acceptable and slow the sale for all other attendees. Kivells recommend that you arrive early on the sale day in order to register and minimise queuing time. Attendees on the Monday viewing can register that day. A registration form is included in the catalogue to enable on site attendees to speed up the process.
3. **Commission Bids-** Kivells encourage the use of the Bidding Form which forms part of the catalogue and phone bids may be possible - please contact the Auctioneers regarding this the week before the sale.
4. **Registration and Conditions of Sale** - Kivells reserve the right to request additional information to include Driving License/Passport together with a Business Card/Utility Bills/Proof of Address/Business Letter Heading and the right to request a deposit ahead of any purchase or during sale proceedings. Kivells also reserve the right to deregister Buyers. It is strongly recommended that Bidders and Buyers read Kivells Standard Terms and Conditions of Sale ahead of the sale. Once you have registered you are confirming that you have read, agree with and will abide by those Conditions and these Notice to Purchasers. In registering you warrant that the information is correct, up to date on the sale closure date and you are over the age of 18. All registrations are provisional and subject to the approval by Kivells.
- 4a. **We advise the following-** To take part in this sale you may be required to pay an initial deposit in order to bid and this applies both to attendees on site and to online bidders. If you are unknown to Kivells or have not traded with Kivells for the last 12 months then you will be deemed to be a new buyer. All new buyers will be required to pay a deposit.

The minimum deposit payable is £500. In all other instances a 10% deposit of anticipated max bid amount is required. Should your bid exceed any anticipated bid spend then Kivells reserve the right to request additional funds during the sale event. Kivells are the sole arbiters as to the amount payable.

Deposits must be paid in cleared funds at least 24 hours before the sale day by BACS transfer or Debit Card payment. Alternatively cash payments can be made on site, on the day of sale, subject to Anti-Money Laundering regulations.

Notice to Purchasers

A minimum deposit of £500 is required which allows a credit limit of £5,000 or 10% of the anticipated purchase price.

Deposits must be received in cleared funds via any of the following methods:

- **Online payment**
- **Cash** – acceptable on auction day – subject to Anti-Money Laundering Regulations
- **Personal Debit Card** – acceptable on auction day
- **Bank Transfer** – must be received before a bidder number can be assigned. Please see bank details below.

Kivells Bank details for the non-interest-bearing client account are:

Kivells Ltd Client Account
Sort Code 56-00-49
Account Nom 32532822

In paying a deposit you are confirming you have read and agree with Kivells Terms and Conditions.

Successful Buyers - The deposit will be taken as part of the total purchase price.

Unsuccessful Bidders – The full deposit will be returned within 10 days to the bank account details you provide below.

Bank Name; Account Holders Name; Sort Code; Account Number

Please note- the deposit will only be returned to the bank account from which the monies were received.

5. **Lot Viewing** – Viewing is permitted on the designated dates and times only unless previously agreed with the auctioneers. When inspecting lots, we encourage you to maintain a safe social distance.
Viewing Date(s) and Times are: Sunday 22nd June 2pm to 4pm, Monday 23rd June 10am to 4pm, Morning of Sale from 9am
6. **Health & Safety** - Kivells do not accept any liability for any damage or injury to persons, vehicles, plant, machinery, equipment or any lot not arising out of their negligence. When lots are located on The Sellers premises or 3rd party storage facilities then the aforementioned are responsible for Health & Safety. Any person entering the Saleground does so at their own risk, must comply with the requirements of any Health and Safety notices and guidelines and be appropriately dressed. Please ensure you maintain a safe social distance. All persons entering the premises are hereby given notice that there are significant risks due to the range and display of equipment, vehicle movement and the nature of the premises. Caution should be exercised and children must be fully supervised at all times. Permission from the Auctioneers / Seller or storage facility manager is required ahead of starting powered equipment or machinery. Any incidents or accidents on the premises should be reported to Kivells/Seller or storage facility manager immediately. Kivells reserve the right for themselves and their Sellers and 3rd party storage facilities to refuse admission to any person or vehicle into the Saleground without giving reason. The Auctioneers also reserve the right for themselves and the Sellers and 3rd party storage facilities to halt any removal in the event there are concerns over the Buyer's or their contractor's capability and methods. The right extends to requesting confirmation of insurance cover, method statements and other assurances to include returnable deposits.
7. **Loading:** Loading of sold lots during the sale in the sales field will NOT be permitted unless Kivells give permission and have personnel available for crowd control and other safety purposes. To enable loading to occur all attendees are requested to follow the mobile sale rostrum and move away from the sold rows. In any event **loading will not be permitted before 12 noon on the sale day.**
8. **Descriptions of Lots** - Kivells has limited access to lots prior to sale and therefore Buyers should satisfy themselves prior to making bids as to the condition of any Lot and should rely on their own judgement as to whether the Lot accords with its description. All Lots are sold with all faults and imperfections and errors of description. All statements are the Auctioneers or Sellers opinion and are not statements or representations of facts. You do not have to bid.

Notice to Purchasers

9. **Payment - Currency GBP** – Onsite Attendees - Day of Sale: Online Bidders - The auctioneers will either 1) contact you on day of sale for immediate payment or 2) will email an invoice on the first weekday following the close of the sale. Email payment is thereafter due no later than 24 hours from the time of forwarding the invoice. Payments will be due in full at the final bid price in respect of the lot sold plus all associated costs, Buyers premium and VAT. Finance should be agreed before the sale. Failure to have finance in place does not negate the Buyers obligation to pay.
Payment will only be accepted from the successful purchaser or their duly appointed agent. Any payment is to be by a means approved by the Auctioneers and include the Buyers Commission and VAT. Our terms are strictly cash, Bank Transfer, Debit Card, **NO** Credit Cards are accepted.
Our Bank Account details are: Sort Code 56-00-49 Account Number 32532822.
10. **Payment in Cash** - In order to comply with money laundering regulations The Auctioneers will not accept Cash payments above the maximum permitted at the time of sale. The maximum varies according to exchange rates and currently it is circa £7,000 - £9,000. Buyers are advised to check with the Auctioneers ahead of the sale.
11. **Commission/Buyers Premium** - All Lots will be subject to a Buyers Commission / Premium whether sold by auction, by private treaty or tender pre or post sale. VAT at the standard rate will be charged on all commissions. Buyers shall pay Commission to the Auctioneers at the following rates:
- **10% on any single lot up to and including £2000**
 - **5% on any single lot over £2000 & up to a maximum of £30,000**
 - **Any single lot over £30,000 will be subject to a commission 'cap' of £1500**
 - **Any single lot over £40,000 will be subject to a commission cap of £2000**
- Currency GBP**
- All Bidders on Marteye will be paying an additional 1% (subject to a maximum sum of £500) plus VAT per lot for the use of this service.
12. **Risk** - All lots remain at the risk of the Buyer from the fall of the hammer/closure of bidding for each lot and it is strongly advised that the Buyer effects insurance immediately.
13. **Collection of Lots** - All lots must be removed from the Saleground by 2pm Friday 27th June (unless other arrangements have been made with the seller or the auctioneers). The clearance times are as follows; Sale Day circa 12 noon to 6pm or later if announced; Wednesday 25th 10am to 4pm; Thursday 26th 10am to 4pm; Friday 27th 10am to 2pm. When removing lots, please ensure you maintain a safe social distance. Lots can only be removed once full payment has been made. The Buyer is responsible for the collection of their lots and any associated costs of transport. Assistance with loading by The Auctioneers, Seller or the storage facility is given without any liability to The Buyer or The Buyers removal contractor. Buyers are strongly advised to use their own suitably qualified and insured contractors.
14. **Handler** - Assistance with loading will be available for the stated clearance period. Given the number and size of some of the lots Kivells advise purchasers to make their collection arrangements known to Kivells on the day of sale. Any items left at the sale premises are done so entirely at the purchaser's own risk.
15. **Value Added Tax** - Please be aware some lots may be subject to VAT and therefore VAT will be charged in accordance to the current rate and added to all accounts and is applicable to the Commission/Buyers Premium. VAT status will be clearly stated in the Lot description.
16. **Export of Lots** - All goods purchased from Kivells auctions that are to be exported or removed from the United Kingdom will:
1. Be dealt with under the requirements set out of HM Customs and Excise publications:
 - a) VAT Notice 703 dated January 2021 – Goods exported from the UK from 1st January 2021.
 2. Be Zero rated for VAT purposes subject to the following conditions being met.
 - a) The goods are removed from Great Britain within three months from the time of supply (the date of auction).
 - b) Kivells are provided with valid written evidence that the Lots have been removed from Great Britain within three months of the auction closure date. Unless and until the above requirements are fulfilled Purchasers will be charged

Notice to Purchasers

VAT at the Great Britain standard rate (currently 20%). This will only be refunded if all requirements within the regulations are met within the specified time limits.

The Purchaser or their agent will be responsible for removing the Lots from Great Britain and will act as the importer of record and will be responsible for payment of any VAT, duties, goods and services tax, or other sales or import taxes or duties arising on the exportation of the goods from Great Britain and the importation of the goods into any country.

Neither Kivells or the Seller are responsible for any VAT, duties, goods and services tax, or other sales or import taxes or duties arising on the exportation of the lots from Great Britain and the importation of the lots into any country by the Purchaser or their agent.

Kivells recommend exporters visit <https://www.gov.uk/check-customs-declaration>

ANY PHYTOSANITARY CERTIFICATION AND DOCUMENTATION REQUIRED TO EXPORT LOTS FROM GREAT BRITAIN ARE STRICTLY THE RESPONSIBILITY OF THE PURCHASER.

ONLINE BIDDING AVAILABLE

Simply Download the **MartEye App** from your phone App Store & Register.
Then press the **JOIN** button on the **Kivells Machinery Page**

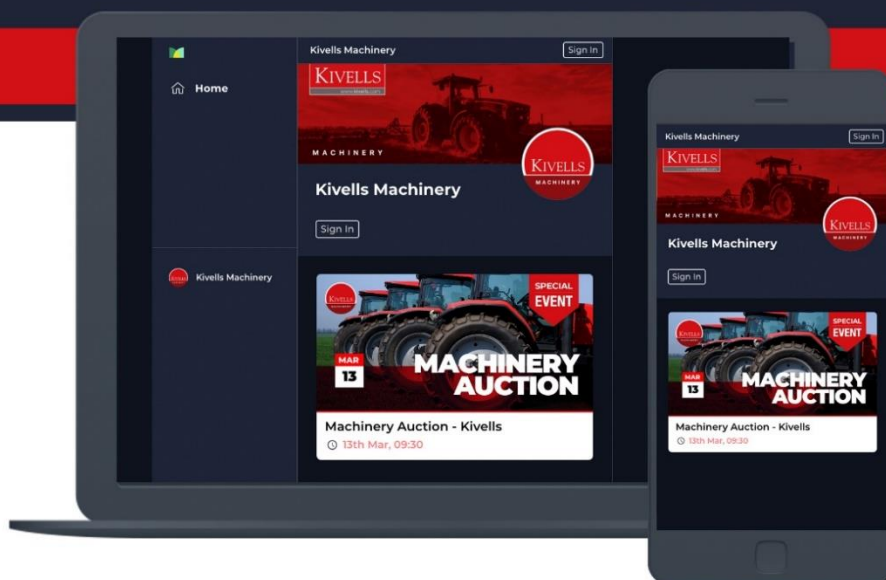
Your full details will be required for using online bidding and a trading reference **MUST** be provided prior to the sale day if you are not known to the Auctioneers. Applications made on the sale day for online bidding run the risk of not being approved. All buyers must ensure they have transport arranged prior to the Sale. All lots must be paid for prior to them leaving the Market.

Please Contact:
Holsworthy Market on **01409 253275**



ALSO AVAILABLE ON WEBSITE:

kivellsmachinery.marteye.ie



Claas Jaguar 950 forager

Year: 2023

Engine hours: 700

Cylinder hours: 515

Registration- WK73 AZT

NIR sensor/yield meter harvest lab, Front tyre inflation, Auto lube, LED light package, Chute extension, Shredlage cracker, Wholecrop cracker, Maize cracker with Claas 300 Pick-Up header.





Fendt 724 Vario Gen 6

Year: 2023

Hours: 4,658

Registration- WK23 AEC

240HP, ProfiPlus setting 2, Vario transmission, TMS 50kph, front axle suspension, X3 way air cab suspension, exhaust brake, air brakes, hydraulic top link, epc front links + 1 DA front spool, Front PTO, 152 l/min hydraulic pump, X5

rear DUDK spools, power beyond, free flow return couplers, auto climate control, super comfort evolution air seat, infotainment package (phone & radio via terminal), X2 LED beacons, Full LED light package + LED brake lights + Side lights, fire extinguisher, Electric mirrors + heating – Terminal controlled, phone holder, Fendt Varioguide NovAtel guidance +/-20cm, with free upgrade to +/-15cm), Contour assistant, Section control, Isobus ready, Telemetry package, new 3L joystick with shuttle function, new dash board, new arm rest with X2 Digital + X2 Analog camera inputs, X4 USB connectors, 12" Fendt arm rest terminal, + 12" Additional Roof Terminal, Fendt smart connect, 650/75/R38 - 600/65/R28 Trelleborg tyres.





Fendt 724 Vario Gen 6

Year: 2023

Hours: 4,983

Registration- WK23 AEB

240HP, ProfiPlus setting 2, Vario transmission, TMS 50kph, front axle suspension, X3 way air cab suspension, exhaust brake, air brakes, hydraulic top link, epc front links + 1 DA front spool, Front PTO, 152 l/min hydraulic pump, X5

rear DUDK spools, power beyond, free flow return couplers, auto climate control, super comfort evolution air seat, infotainment package (phone & radio via terminal), X2 LED beacons, Full LED light package + LED brake lights + Side lights, fire extinguisher, Electric mirrors + heating – Terminal controlled, phone holder, Fendt Varioguide NovAtel guidance +/-20cm, with free upgrade to +/-15cm), Contour assistant, Section control, Isobus ready, Telemetry package, new 3L joystick with shuttle function, new dash board, new arm rest with X2 Digital + X2 Analog camera inputs, X4 USB connectors, 12" Fendt arm rest terminal, + 12" Additional Roof Terminal, Fendt smart connect, 650/75/R38 - 600/65/R28 Trelleborg tyres.





New Holland Boomer

Year: 2022

Hours: 1525

Registration: WK22 OSN

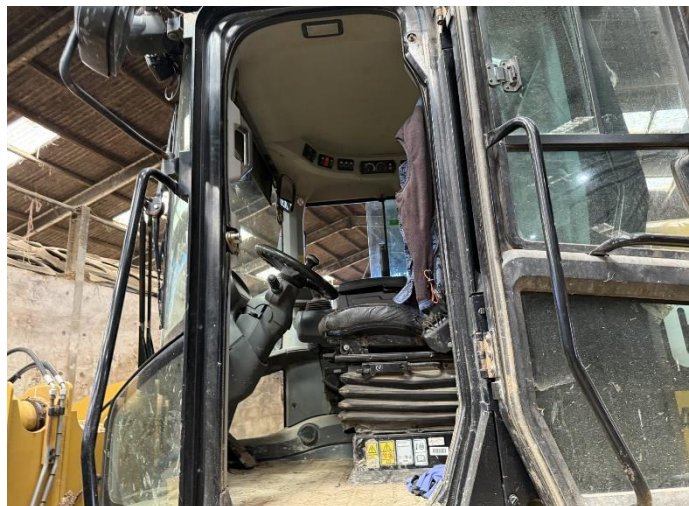


CAT Ag Handler 924K

Hours: 10,387

Registration- BC16 TTJ

2014 model first registered in 2016



Kobelco SK230SRLC

Year: 2017

Hours: 2700

6 buckets

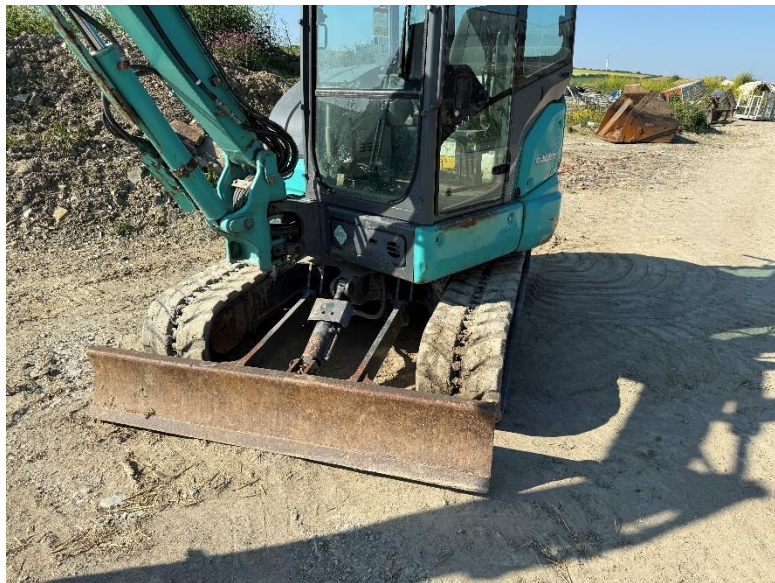


Kobelco SK55SRX

Year: 2016

Hours: 1600

5.5T



Toyota Hilux Invincible

Year: 2022

Mileage: 14,851 miles

Registration: PD22 MOO

Diesel, dent in the front wing, under rail
canopy lining



3x Richard Western Silage Trailers

Year: 2017

Model: SF17 HS Edition

Air / hydraulic, loading sensing/Abs, 560/60
R22.5 tyres, Hydraulic door, High level LED lights,
Rear camera



2x Herron Silage Trailers

Model: Herron H2

18T, sprung draw bar, LED lights, air brakes,
flotation tyres, hydraulic rear door



Herbst Dump Trailer

Year: 2016

16T, 550/45-22.5 tyres



Joskin Cattle Trailer

Year: 2011

Model: Joskin RDS 9000

9m, air- not hydraulic



Marston Silage Trailer

12T



Teagle Tomahawk C12 Straw Chopper

Year: 2022

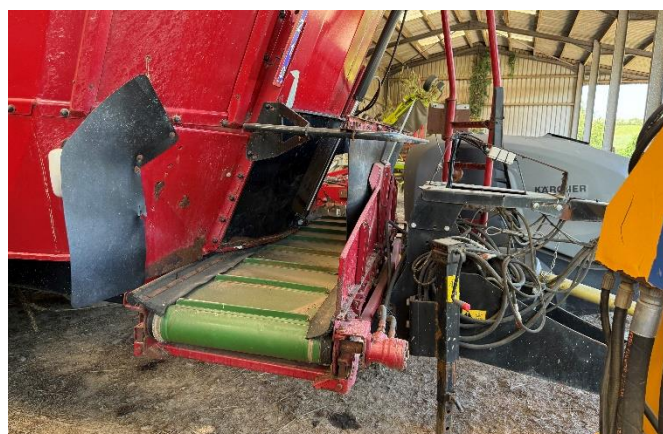


Kongskilde Feeder Wagon

Year: 2020

Model: Kongskilde VM30

Front cross conveyor



Claas Rake

Year: 2016

Model: Claas 3600HH

Hydraulic height adjustment, Isobus and communicator screen, hydraulic brakes, road lights



2x Transpread Radio Controlled Pump

Year: 2019

Hours: 3689 & 3840

Bauer sx2000 pump, Return to pit pipework, Inlet and outlet pressure display, LED road lights, Honda 4 stroke engine driving Bauer primer



Claas Volto Tedder

Year: 2018

Model: Claas 1300T

Hydraulic border curtain



Claas Volto Tedder

Year: 2021

Model: Claas 800

Manual border curtain



Images of Range of Equipment



Further items

Tractors & Vehicles

- New Holland T3030 (includes front weights)- spares or repair
- 2014 New Holland T4020
- Kawasaki Mule, 4x4, 4 seater, 1,554 hours
- Kawasaki 3010, runs but needs attention
- 2002 Landrover Discovery, 4 x nearly new tyres & wheels, runs, no MOT, 138, 238 miles (GV52 XDF)

Trailers

- 12ft Ifor Williams Cattle Trailer
- Twin axle small plant trailer
- 2017 Kubota Tipping Trailer
- Calf Trailer for Quad
- Flatbed Trailer for Quad, Longdog
- Quad Trailer, poor condition

Machinery & Implements

- 2017 Claas 500 Direct Disc Forage Header, Transport trailer with lights, top hats
- 2022 Maize Header, 600SD Orbis, Lateral float, Row finder
- 2015 Claas Whole Crop Cracker, multi-crop cracker, 125 4 - 125 teeth
- 2014 Rolland Rollforce 55147 Dung Spreader
- 2015 Supreme Feeder Wagon, 1200T
- 2012 9ft Albutt Buckrake, Hardox tines, front mounted
- 2021 Steketee 8 Interrow & Seeder, road lights
- Swing shovel flail topper/mower
- McConnell Shakerator, 9 leg, 2.8m, rear packer, age unknown
- Grain bucket- well used but tidv

- Mensch M700 Yard Scrape, Scorpion brackets
- 2.2m³ Bucket
- Silapactor
- Adjustable pallet forks
- Pallet forks with volvo quick hitch
- 9ft Muck Grab
- CAT Loading Shovel Bucket, 2 yard' bucket' volvo quick hitch
- 2007 Transpread dribble bar, 7m, no flow meter with 2 x 1.5m sections
- 2019 Transpread dribble bar, 12m, manual fold
- 2019 Transpread Reeler (excluding pipe), 1000m,
- 2023 Transpread Reeler (excluding pipe), 1000m
- 2011 Spreadwise Reeler (excluding pipe), 800m
- Transpread Reeler (excluding pipe), 600m
- Spare spool (excluding pipe), 1000m
- All Reeler Pipe
- 4x Bauer PTO Driven Slurry Pump SX1000
- Adjustable pallet tines
- Adjustable pallet forks
- Strimech bucket, spares or repairs, damaged floor

Further items

Livestock Equipment

- Bateman calf de-horning crate
- Self locking yokes, 8 x large, 15 x small
- Sedgemoor Pheasant Rearing Units, Brooder Houses, 15 x Excellent condition, 7 x Good condition, 8 x Poor condition, Night Shelters, 16 x Excellent condition, 6 x Good condition, 10 x Poor condition
- Partridge Runs
- Holm & Laue Milk Warmer Taxi
- Old clipping crush
- Qty of calf hutches

Sundries

- 1250kg Agco front weight
- 900kg John Deere front weight
- New Holland front weight
- 700kg Flat weight, homemade on A frame
- 2008 Greencrop fuel bowser, 1000l, road lights
- 2x Karcher Pressure Washers
- 3x Karcher Steam Cleaners
- Wheel hub centres, Pronar 07 22, 16 x 22.5 (8)
- 1000L Front Linkage Spray Tank
- Tools & spares, Ground carekit, pipe fittings etc
- 8T trolley jack
- 10,000l Water Tank
- 5000l Water Tank
- Logic Grass Rake
- Logic Tow Sprayer (on wheels)
- Rotavator
- Mule Mounted Sprayer
- 1 x Auvana 435/50R 19.5 8 Stud

- 1 x Ceat 435/50R 19.5 10 Stud
- 1 x Road 435/50R 19.5 10 stud
- Michelin Tyre
- Surplus wheel
- Chiller container, used for bird storage
- Steel pipes x20
- Pipe trailer
- Quantity of IBCs
- Quantity of gates
- Quantity of pheasant feeders
- Septic tank
- Quantity of water pipe
- Single skin fuel tank, not bunded, 1340l
- 2x Large Troughs
- Pallet of telecom ducting
- Yard scrape
- 8 x John Shepherd Feeders
- Slurry Pipes and UPVC piping
- 1000l front loaded spray tank
- Briggs irrigator

Accommodation

<u>Wadebridge</u>		
Premier Inn	Gonvena Hill, Wadebridge PL27 6BN	01208 222066
Travelodge	West Hill, Wadebridge, PL27 7HR	08719 846452
Hustyns Resort	St. Breock Downs Farm St Breock, Wadebridge PL27 7LG	01208 893700
<u>Padstow</u>		
Pickwick Inn	Burgois, St Issey, Padstow, Cornwall, PL27 7QQ	01841 540361
Harbour Hotel	Harbour Hotel Padstow, Station Road, Padstow, Cornwall, PL28 8DB	01841 532 486
Old Customs House	Old Custom House, South Quay, Padstow, Cornwall, PL28 8BL	01206 695622
<u>Bodmin</u>		
Premier Inn	Launceston Road, Bodmin PL31 2RW	0333 777 3923
Lanhydrock Hotel	Lostwithiel Road, Bodmin PL30 5AQ	01208 262570
Bodmin Jail Hotel	Scarlett's Well Road, Bodmin PL31 2PL	01208 822822

Hauliers

We have listed below a number of haulage companies.

It is the responsibility of the buyers to make their own arrangements to remove their lots and contract with their chosen haulier.

<u>Haulier</u>		
PR Weldhen	Newquay	01637 880087
A & B Contractors	Barnstaple	01271 882006
Nick Sampson	Barnstaple	01271 376701
Bob Davies Transport Ltd	Taunton	07977 504506
LG Haulage (light haulage)	Holsworthy	07787 450581
Cains Farm Ltd	Dorset	01297 489537
Simon Ford Transport	Newton Abbot	07970 818083
A T Bone & Sons Ltd	Hertfordshire	01707 642178

Directions

Pawton Dairy, St. Breock, Wadebridge PL27 7LR

What3Words: shutting.forget.shampoos

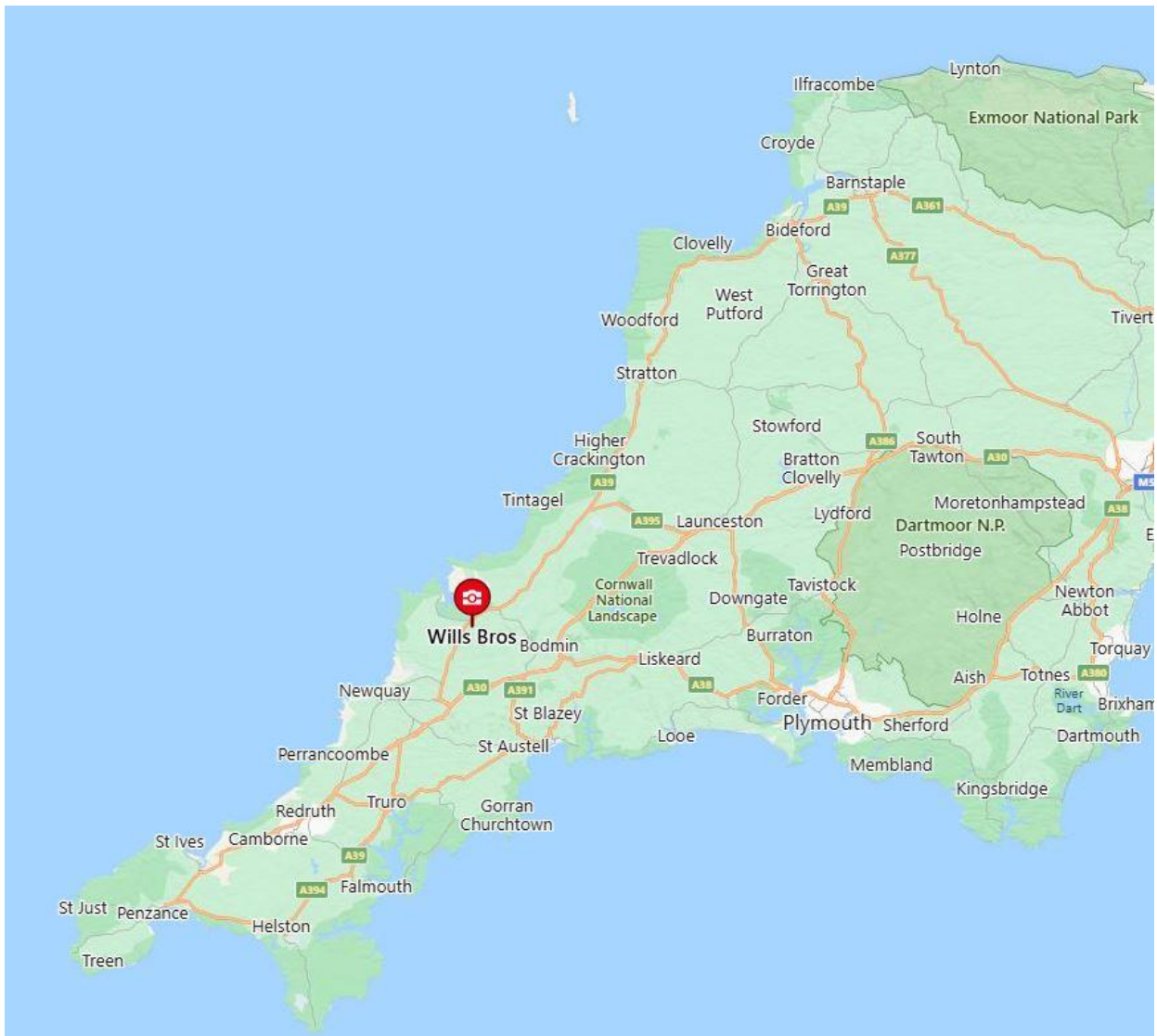
From Camelford-

Head South on the A39 for 14 miles heading towards Wadebridge.

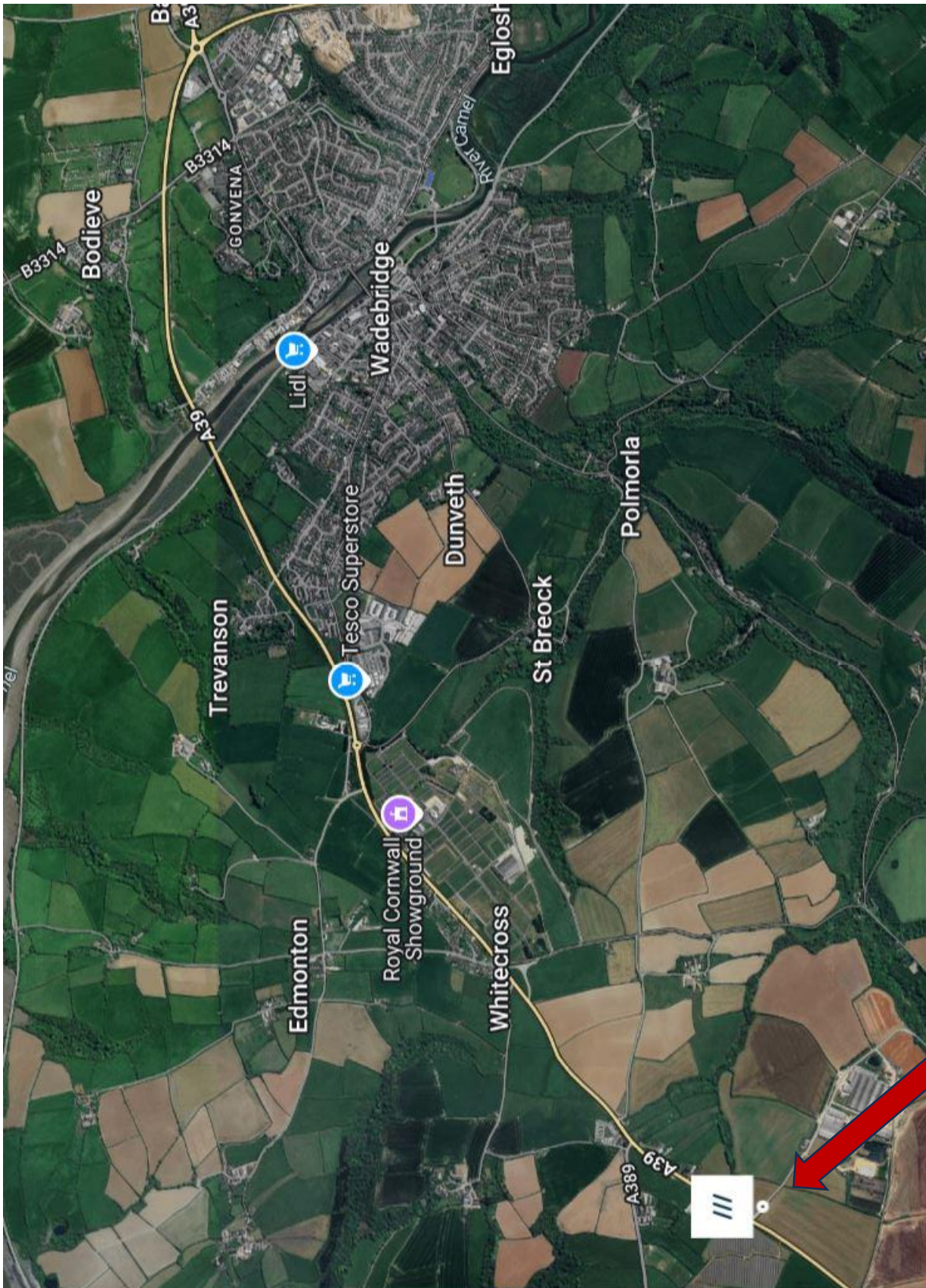
When approaching the Premier Inn roundabout, take the 3rd exit.

Follow this road for 2.8 miles, driving past Royal Cornwall

Showground on your left. Follow this road for another 1.4 miles until you approach Pawton Dairy on your left.



Directions



Pawton Dairy, St. Breock,
Wadebridge PL27 7LR

Notes

Notes

LIVE & ONLINE



Exclusive

On Farm Dairy Sale

**On Farm Sale of 400 head from the
renowned 'Willsbro' Herd**

Pawton Dairy, Wadebridge, PL27 7LN

Monday 30th June 2025

On behalf of Wills Bros Limited

**Over 400 sell including 150 fresh cows with
'A' lots & 100 elite youngstock**



Contact us for more information: dairy@kivells.com / 01409 253275



2025 SALE DATES



Monthly Live & Online Collective Sales
of Machinery, Vehicles & Implements

Holsworthy Market

SATURDAY 5TH JULY

SATURDAY 2ND AUGUST

SATURDAY 6TH SEPTEMBER

SATURDAY 4TH OCTOBER

SATURDAY 1ST NOVEMBER

SATURDAY 6TH DECEMBER

In addition to on-farm sales held throughout the year covering the whole of the South West

See our website for more info!

WWW.KIVELLS.COM | CALL: 01409 253253 | EMAIL: MACHINERY@KIVELLS.COM

KIVELLSMACHINERY.MARTEYE.IE

Tradition Meets Technology

Our team of Machinery Auctioneers & Coordinators are at hand to sell your farm machinery whether it be on site, online or at one of our many collective auctions conducted throughout the South West and beyond.



Kivells Machinery & Equipment Sales Online | On Site | On Market Premises

- 'Our expertise centres around the agricultural sector and as our clients have diversified so have we.'
- We sell a huge range of machinery and equipment both into and out of the sector.
- Our online service offering is market leading and the feedback we have received both from our vendors and buyers bears that out. We are proud of our reputation and we are confident the choice of MartEye as Kivells online service partner will add to that.
- Our policy is to offer the best online capability combined with tried and tested traditional methods. We recognise the role auctions play in the agricultural community enabling people to gather and meet and the wellbeing benefits that brings. It is all about achieving the right balance in a safe environment and at the same time maximise the realisation for our vendors and ease of use for our buyers. We believe Kivells combination of market leading sales technology and respect for tradition does just that.'

Thinking of Selling? Feel free to contact me or any of our team for a confidential discussion. It is never too early to plan and prepare'.

David Kivell
Head of Machinery & Heritage Department

www.kivells.com | machinery@kivells.com

Holsworthy Livestock Market,
New Market Road, Holsworthy, Devon EX22 7FA
01409 253253

Exeter Livestock Centre,
Matford Park Road, Exeter, Devon EX2 8FD
01392 251261

