

LIVE & ONLINE

ON FARM RETIREMENT DISPERSAL SALE

Over 300 lots anticipated

On behalf of
GHA & MU Faull



MAY

30

1pm



Formerly trading at: Trelissick Farm, Sithney, Helston, TR13 0RL

DISPERSAL SALE OF TRACTORS, HANDLER, MACHINERY, IMPLEMENTS & EFFECTS

KIVELLSMACHINERY.MARTEYE.IE

01409 253253 | MACHINERY@KIVELLS.COM | WWW.KIVELLS.COM

Foreword

This important dispersal sale follows the decision of Mr & Mrs Faull to retire from farming having spent a lifetime at Trelissick.

Having successfully sold the farm, this dispersal of high-quality machinery, equipment & effects accumulated on the property over their lifetime in farming marks the final stage before fully retiring.

This is a sale not to be missed and will be commencing at 1pm to avoid clashing with another fixture in the area.

Our thanks go to Mr & Mrs Faull for their kind instructions in not only selling their livestock, the farm and now the machinery with this sale and we would like to take this opportunity to wish Mr & Mrs Faull a happy retirement.

Notice to Purchasers

Live and Online Auction Notice to Purchasers – Important Information On Farm Sales

(Live and Online – Auctioneer streamed live, taking bids from both the attendees and made by bidders online with occasional commission and telephone bids. This can be done by 1) sound + image of lot + bids or 2) screening of auctioneer + sound + image of lot + bids. Online bidders may be bidding through their smartphone, tablet, laptop, or desktop computer and are able to see all bids on screen throughout the sale.)

Your Kivells contacts: David Kivell: 07899 960272, Charlie Kivell: 07794 000325, Office: 01409 253253

Date and Time of Sale: Saturday 30th May 2026 at 1pm

Sale Location: Trelissick Farm, Sithney, Helston, TR13 ORL

- 1. Registration and Bidding online-** Online bidding is via Marteye, intending bidders must download the MartEye App from your phone App store where you can register. Once you have downloaded the App you need to go on the Kivells Machinery Page and **Sign in** with your details and then click the **Join** button. You can also access MartEye through **kivellsmachinery.marteye.ie** where you will be directed straight to our page and you will be required to **Sign in** with your details and then click the **Join** button. Once you have done this process your application will come through to us for approval. **We strongly advise registering well ahead of the sale as 'late' registrants, on the morning of sale, run the risk of not being approved in time. Kivells recommend that bidders register and satisfy Kivells regarding payment capability on or before Thursday 28th May. Overseas bidders should contact Kivells accounts office at the earliest opportunity.**
- 2. Registration and Live Bidding -** All those attending the sale in person will be required to register in the Kivells Pay Office, prior to inspecting the lots, whereby you will obtain a Bidding Card. The Bidding Card will be used to bid on the sale items. Failure to register may mean your bid may not be acceptable and slow the sale for all other attendees. Kivells recommend that you arrive early on the sale day in order to register and minimise queuing time.
- 3. Commission Bids-** Kivells encourage the use of our Bidding Form which can be found on our website and phone bids may be possible - please contact the Auctioneers regarding this the week before the sale.
- 4. Registration and Conditions of Sale -** Kivells reserve the right to request additional information to include Driving License/Passport together with a Business Card/Utility Bills/Proof of Address/Business Letter Heading and the right to request a deposit ahead of any purchase or during sale proceedings. Kivells also reserve the right to deregister Buyers. It is strongly recommended that Bidders and Buyers read Kivells Standard Terms and Conditions of Sale ahead of the sale. Once you have registered you are confirming that you have read, agree with and will abide by those Conditions and these Notice to Purchasers. In registering you warrant that the information is correct, up to date on the sale closure date and you are over the age of 18. All registrations are provisional and subject to the approval by Kivells.
- 4a. We advise the following-** To take part in this sale you may be required to pay an initial deposit in order to bid and this applies both to attendees on site and to online bidders. If you are unknown to Kivells or have not traded with Kivells for the last 12 months then you will be deemed to be a new buyer. All new buyers will be required to pay a deposit.

The minimum deposit payable is £500. In all other instances a 10% deposit of anticipated max bid amount is required. Should your bid exceed any anticipated bid spend then Kivells reserve the right to request additional funds during the sale event. Kivells are the sole arbiters as to the amount payable.

Deposits must be paid in cleared funds at least 24 hours before the sale day by BACS transfer or Debit Card payment. Alternatively cash payments can be made on site, on the day of sale, subject to Anti-Money Laundering regulations.

A minimum deposit of £500 is required which allows a credit limit of £5,000 or 10% of the anticipated purchase price.

Notice to Purchasers

Deposits must be received in cleared funds via any of the following methods:

- **Online payment**
- **Cash** – acceptable on auction day – subject to Anti-Money Laundering Regulations
- **Personal Debit Card** – acceptable on auction day
- **Bank Transfer** – must be received before a bidder number can be assigned. Please see bank details below.

Kivells Bank details for the non-interest-bearing client account are:

Kivells Ltd Client Account
Sort Code 56-00-49
Account Number 32532822

In paying a deposit you are confirming you have read and agree with Kivells Terms and Conditions.

Successful Buyers - The deposit will be taken as part of the total purchase price.

Unsuccessful Bidders – The full deposit will be returned within 10 days to the bank account details you provide below.

Bank Name; Account Holders Name; Sort Code; Account Number

Please note- the deposit will only be returned to the bank account from which the monies were received.

5. **Lot Viewing** – Viewing is permitted on the designated dates and times only unless previously agreed with the auctioneers. When inspecting lots, we encourage you to maintain a safe social distance.
Viewing Date(s) and Times are: Thursday 28th May 1-3pm & sale morning from 11am
6. **Health & Safety** - Kivells do not accept any liability for any damage or injury to persons, vehicles, plant, machinery, equipment or any lot not arising out of their negligence. When lots are located on The Sellers premises or 3rd party storage facilities then the aforementioned are responsible for Health & Safety. Any person entering the Saleground does so at their own risk, must comply with the requirements of any Health and Safety notices and guidelines and be appropriately dressed. Please ensure you maintain a safe social distance. All persons entering the premises are hereby given notice that there are significant risks due to the range and display of equipment, vehicle movement and the nature of the premises. Caution should be exercised and children must be fully supervised at all times. Permission from the Auctioneers / Seller or storage facility manager is required ahead of starting powered equipment or machinery. Any incidents or accidents on the premises should be reported to Kivells/Seller or storage facility manager immediately. Kivells reserve the right for themselves and their Sellers and 3rd party storage facilities to refuse admission to any person or vehicle into the Saleground without giving reason. The Auctioneers also reserve the right for themselves and the Sellers and 3rd party storage facilities to halt any removal in the event there are concerns over the Buyer's or their contractor's capability and methods. The right extends to requesting confirmation of insurance cover, method statements and other assurances to include returnable deposits.
7. **Loading:** Loading of sold lots during the sale in the sales field will NOT be permitted unless Kivells give permission and have personnel available for crowd control and other safety purposes. To enable loading to occur all attendees are requested to follow the mobile sale rostrum and move away from the sold rows. In any event **loading will not be permitted before 3pm on the sale day.**
8. **Descriptions of Lots** - Kivells has limited access to lots prior to sale and therefore Buyers should satisfy themselves prior to making bids as to the condition of any Lot and should rely on their own judgement as to whether the Lot accords with its description. All Lots are sold with all faults and imperfections and errors of description. All statements are the Auctioneers or Sellers opinion and are not statements or representations of facts. You do not have to bid.
9. **Payment - Currency GBP** – Onsite Attendees - Day of Sale: Online Bidders - The auctioneers will either 1) contact you on day of sale for immediate payment or 2) will email an invoice on the first weekday following the close of the sale. Email payment is thereafter due no later than 24 hours from the time of forwarding the invoice. Payments will be due in full at the final bid price in respect of the lot sold plus all associated costs, Buyers premium and VAT. Finance should be agreed before the sale. Failure to have finance in place does not negate the Buyers obligation to pay.

Notice to Purchasers

Payment will only be accepted from the successful purchaser or their duly appointed agent. Any payment is to be by a means approved by the Auctioneers and include the Buyers Commission and VAT. Our terms are strictly cash, Bank Transfer, Debit Card, **NO** Credit Cards are accepted.

Our Bank Account details are: Sort Code 56-00-49 Account Number 32532822.

10. **Payment in Cash** - In order to comply with money laundering regulations The Auctioneers will not accept Cash payments above the maximum permitted at the time of sale. The maximum varies according to exchange rates and currently it is circa £7,000 - £9,000. Buyers are advised to check with the Auctioneers ahead of the sale.
11. **Commission/Buyers Premium** - All Lots will be subject to a Buyers Commission / Premium whether sold by auction, by private treaty or tender pre or post sale. VAT at the standard rate will be charged on all commissions. Buyers shall pay Commission to the Auctioneers at the following rates:
- **10% on any single lot up to and including £2,000**
 - **5% on any single lot over £2,000 & up to a maximum of £30,000**
 - **Any single lot over £30,000 will be subject to a commission 'cap' of £1,500**
 - **Any single lot over £40,000 will be subject to a commission cap of £2,000**
- Currency GBP**

All Bidders on Marteye will be paying an additional 1% (subject to a maximum sum of £500) plus VAT per lot for the use of this service.

12. **Risk** - All lots remain at the risk of the Buyer from the fall of the hammer/closure of bidding for each lot and it is strongly advised that the Buyer effects insurance immediately.
13. **Collection of Lots** - All lots must be removed from the Sale ground by 1pm on Thursday 4th June (unless other arrangements have been made with the seller or the auctioneers). When removing lots, please ensure you maintain a safe social distance. Lots can only be removed once full payment has been made. The Buyer is responsible for the collection of their lots and any associated costs of transport. Assistance with loading by The Auctioneers, Seller or the storage facility is given without any liability to The Buyer or The Buyers removal contractor. Buyers are strongly advised to use their own suitably qualified and insured contractors.
14. **Handler** - Assistance with loading will be available for the stated clearance period. Given the number and size of some of the lots Kivells advise purchasers to make their collection arrangements known to Kivells on the day of sale. Any items left at the sale premises are done so entirely at the purchaser's own risk.
15. **Value Added Tax** - Please be aware some lots may be subject to VAT and therefore VAT will be charged in accordance to the current rate and added to all accounts and is applicable to the Commission/Buyers Premium. VAT status will be clearly stated in the Lot description.
16. **Export of Lots** - All goods purchased from Kivells auctions that are to be exported or removed from the United Kingdom will:
1. Be dealt with under the requirements set out of HM Customs and Excise publications:
 - a) VAT Notice 703 dated January 2021 – Goods exported from the UK from 1st January 2021.
 2. Be Zero rated for VAT purposes subject to the following conditions being met.
 - a) The goods are removed from Great Britain within three months from the time of supply (the date of auction).
 - b) Kivells are provided with valid written evidence that the Lots have been removed from Great Britain within three months of the auction closure date. Unless and until the above requirements are fulfilled Purchasers will be charged VAT at the Great Britain standard rate (currently 20%). This will only be refunded if all requirements within the regulations are met within the specified time limits.

The Purchaser or their agent will be responsible for removing the Lots from Great Britain and will act as the importer of record and will be responsible for payment of any VAT, duties, goods and services tax, or other sales or import taxes or duties arising on the exportation of the goods from Great Britain and the importation of the goods into any country.

Notice to Purchasers

Neither Kivells or the Seller are responsible for any VAT, duties, goods and services tax, or other sales or import taxes or duties arising on the exportation of the lots from Great Britain and the importation of the lots into any country by the Purchaser or their agent.

Kivells recommend exporters visit <https://www.gov.uk/check-customs-declaration>

ANY PHYTOSANITARY CERTIFICATION AND DOCUMENTATION REQUIRED TO EXPORT LOTS FROM GREAT BRITAIN ARE STRICTLY THE RESPONSIBILITY OF THE PURCHASER.



Sale Contacts



David Kivell

Auctioneer

07899 960272



Charlie Kivell

Fieldsman

07794 000325



Lauren Dennis

Machinery Sales

Co-Ordinator

07399 298995

01409 253253

John Deere 3215 telehandler

Approximate hours: 10,594

Year: 2004

Registration: HF54 GKC



Universal tractor

Approximate hours: 4,305

Year: 1978

Registration: PUO 880S



Honda TRX 420 quad

Approximate hours: 399

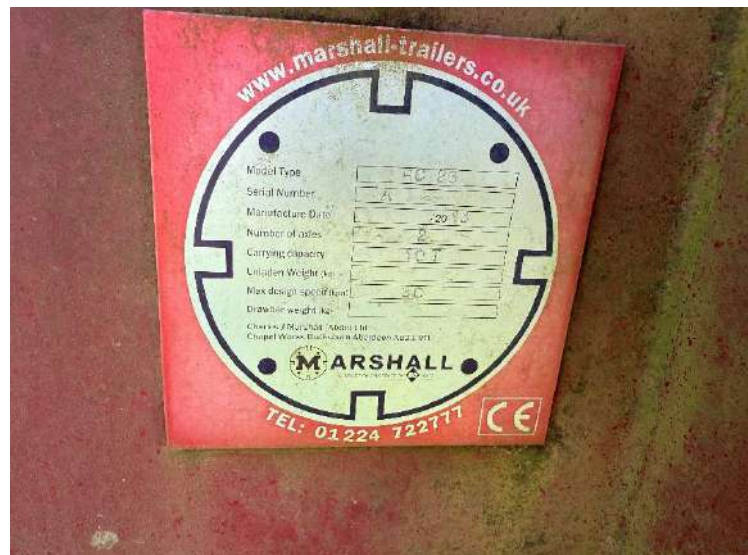
Approximate km's: 3,218

Year: 2023



Marshall flatbed bale trailer

Length: 26ft



JPM low loader trailer

Year: 2021

Model: 11TLL



Marshall silage trailer

Model: Q11

Comes with grain tailboard



Ifor Williams horse trailer

Model: 511

New alloy floor



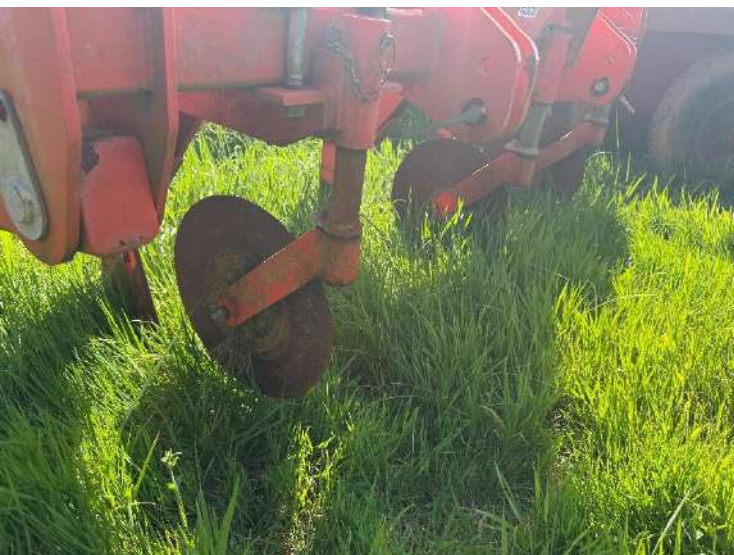
Quad trailer



Browns Viceroy grassland sward lifter

Year: 2022

3 leg



Kuhn mower conditioner

Year: 2003

Model: FC283



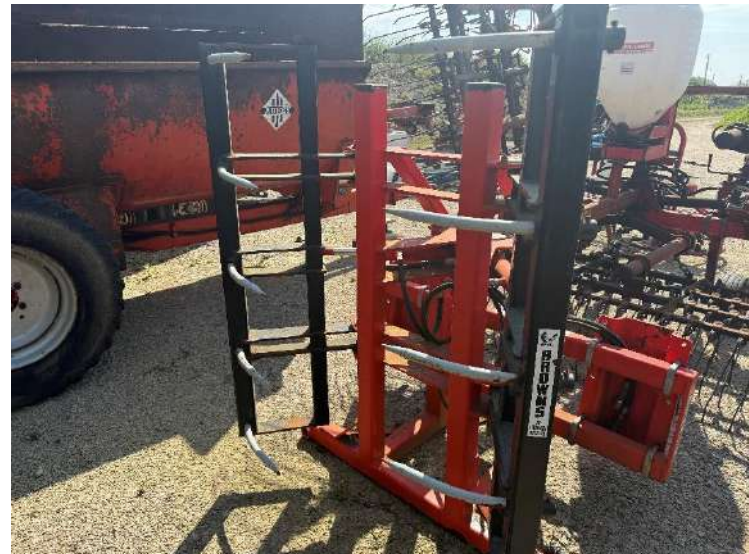
Abbey dung spreader

Model: 2090



Browns straw grab

Pin & cone or euro brackets to fit



Browns grass tine harrows



Lely Lotus Stabilo tedder

Model: 770

6 star



Howard 3m rotavator



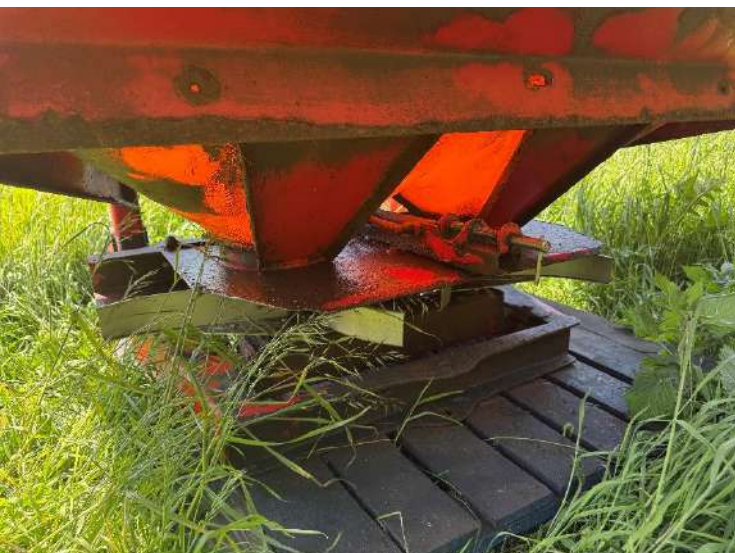
Lely 3m power harrow



LELYTERRA		800-20 250 30 300-200	
1000	91154	91154	91154
91154	91154	91154	91154
91154	91154	91154	91154
91154	91154	91154	91154
91154	91154	91154	91154
91154	91154	91154	91154
91154	91154	91154	91154
91154	91154	91154	91154
91154	91154	91154	91154

Teagle fertiliser spreader

Model: XT48



Bamford octopus corn drill



Bamford land drive dung spreader

Model: FY4



New Holland baler

Model: 68



Welger low density baler



Teagle straw chopper

Model: 8080



Major 3m topper

Year: 2021

Model: GDX



Jarmet sprayer



Fleming silage grab

Pin & cone brackets



Kverneland 300 haybob



Howse 6ft slasher / topper

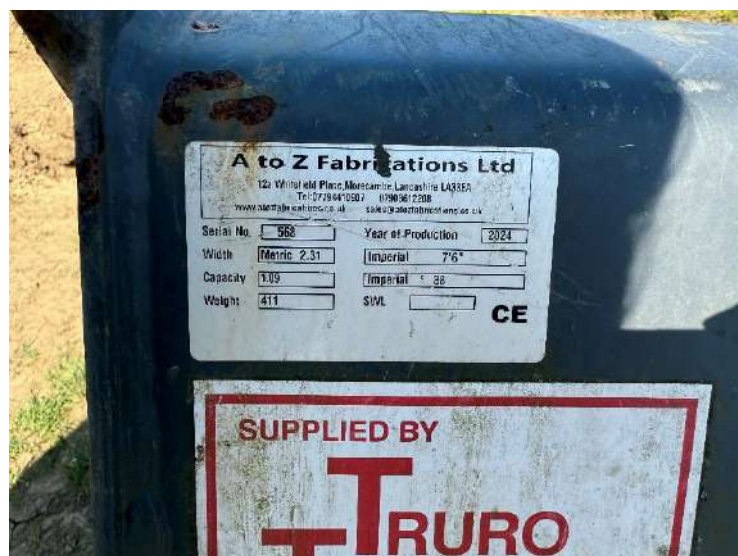
Heavy duty



A-Z 7'6" telehandler bucket

Year: 2024

Pin & cone brackets



Slewtic round bale carrier



Fleming grassland roller



Grass roller



Kverneland 4m spring tine harrows



Fleming link box



Man cage



Browns yard scraper



McCabe silage pusher



Albutt 7'6" grab

On JCB brackets



Slewtric 7'6" telehandler bucket

On pin & cone brackets



Ransomes 3F plough

Comes with land wheel

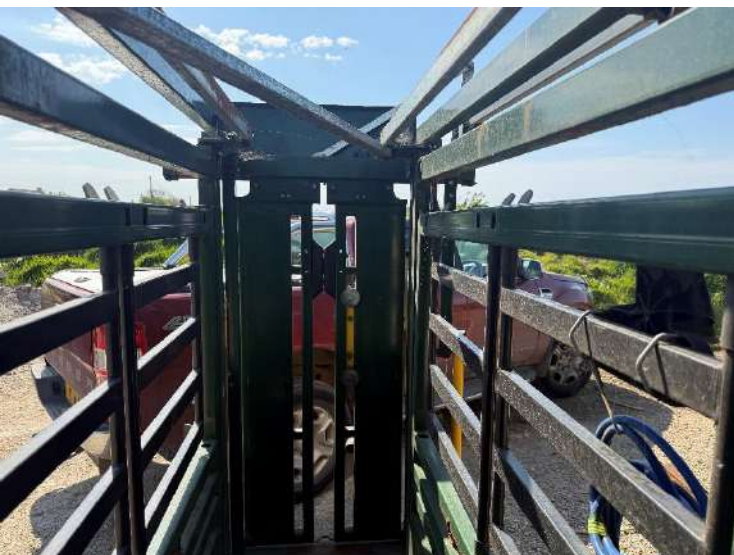
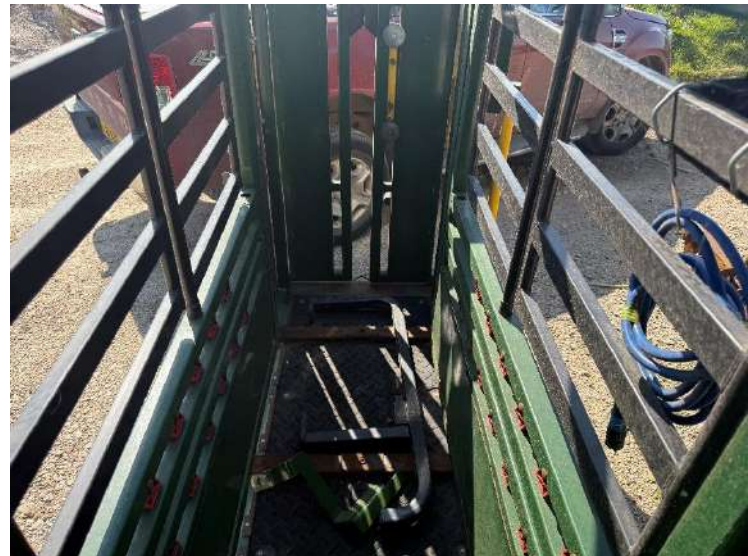


Bamlett PTO cement mixer



Arrowquip cattle crush

Comes with weigher & head yoke



3x Bateman cattle feed troughs



Calf / cattle creep feeder



Rectangular cattle feeders



Calf / cattle creep feeder



4x concrete water troughs



Quantity of gates



2x heavy duty silage nets- 1 year old



Tombstone feeder



Round feeder



Cattle foot bath



Further items

- Zig zag harrows
- Rear mounted bale spike
- Front mounted bale spike- DB loader brackets
- Pallet tines- pin & cone brackets
- Teagle 'A' frame
- Quad bike sprayer
- Horse plough
- Bamford 3 furrow plough
- Stanhay 3 row precision drill
- Ferguson potato planter
- Ferguson ditch plough
- Nuffield wafer weights x2
- Ferguson pick up crook
- Ferguson front tombstone axle
- Ransome bar point plough shears
- Fordson Dexta spares
- Vintage oil pumps x2
- MF65 radiator
- Fordson bits
- 56lb & 28lb scale weights
- Fordson top link
- Mini chrome bull bar, front & rear
- Vintage Butler tractor headlights
- Dexta hydraulic ton cover
- Allis Chalmers 270 PTO cover
- Ferguson T20 spares
- David Brown crop master wheel & tyre
- Teagle fan
- David Brown magneto & radiator curtain
- Cultivator tines
- Austin gypsy bonnet
- Massey Ferguson wheel weight
- Row crop wheels
- Bamlett PTO cement mixer
- Rear tractor weighs x2
- Ifor Williams trailer ramps
- Honda FG314 garden rotovator
- 20ft lorry container
- Man cage (cone & pin)
- New telehandler headlight
- Bags of wood x2
- Tower scaffold x3
- Plastic feed troughs x6
- Electric fence wire (heavy duty)
- Sheep wire rolls
- Barbed wire rolls
- Sandstone paving slabs
- Galvanised trough
- Metal milk churns
- Mexican hat pig trough
- Iron garden gate
- 4x galvanised sheep feed troughs
- Plastic drinking trough
- Galvanised garden planter
- Plastic drainage pipe Bamford plough frame
- Wall fixed galvanised hay rack
- 10x milk bottle crates
- Stock board plastic
- Front tractor tyre- 600 x 16
- 2x granite mushroom
- Selection of galvanised sheets
- Building trestles
- Galvanised storage feed bin
- PTO shafts

Further items

- Manhole lid & frame x2
- 6" fibre cement gutters x2
- Perspex roof lights
- Length brown soil pipe 6"
- Various gutters & fittings
- Fordham drinking bowls x2
- Flo Gas cylinders x3
- Galvanised feed barriers x3
- Gate hurdles 14' & 9'
- Cast iron bath
- Slate slabs
- Wheel barrow
- Scaffold clamps
- Ladder 21'
- Gates - heavy duty 8 bar cattle gates (11', 10', 9')
- Field gates 15', 2x10', 6x13', 4x12', 8', 3x4'
- Sheeted gates 8', 5' (total 25 gates)
- Wood gate 5'
- Cast pig trough
- Silage sheet rolls various lengths
- Ladder 12'
- Cast pig trough
- Work bench x3
- Calf dehorning crush
- Calving aid x2
- Mobile diesel pump
- Shot blasting grit
- Viking electric hedge cutter
- 2 stainless steel milk buckets
- 2 small rubber wheels
- Racing bicycle
- Calf feed bottles
- Bucket of gate hangings
- Bentall low volume fan
- Haybob tines
- Bucket of tractor grease
- Bushel wood tub
- Various hand weed sprayers
- Various clippers cattle/horse
- Hydraulic machinery jack
- Selection of electric fence wire
- Plastic drinking bowls x2
- Plastic feed trough
- Electric fencers
- Blue plastic pipe & fittings
- Plant push seed drill
- Chainsaws x2
- Giant mountain bike
- Pidgeon hole storage unit
- Hotline mains electric fencer
- Tray of water fittings
- Work trestles x2
- Carpenters metal roller stand
- Plastic tree guards
- Big bale temperature probe
- Ifor Williams steel loading ramps

Further items



Further items



Part dispersal sale from David Martin

Of Lestowder Farm

Claas Ares 557 ATZ

Year: 2006

Registration: AY06 DJO

Hours: 10,100



New Holland conventional baler

Model: 377



Samasz 5'6" disc mower



Flat 8 bale sledge



Flat 8 bale grab



Kverneland 4F plough



Hay turner



Hay turner



Bale spike



Bentall roller mill & mixer



Twin wheels



Outside Entries:

David Brown 990 selectomatic

Year: 1966

Registration: EEB 330D



Further items

- Mini digger grading bucket- 25mm pins
- Mini digger bucket
- 2.7T digger bucket
- Pair or horse jump wings
- 2x Feed bins
- Feed bin on wheels
- Tack box
- Mounting step

Notes

Hauliers

We have listed below a number of haulage companies.

It is the responsibility of the buyers to make their own arrangements to remove their lots and contract with their chosen haulier.

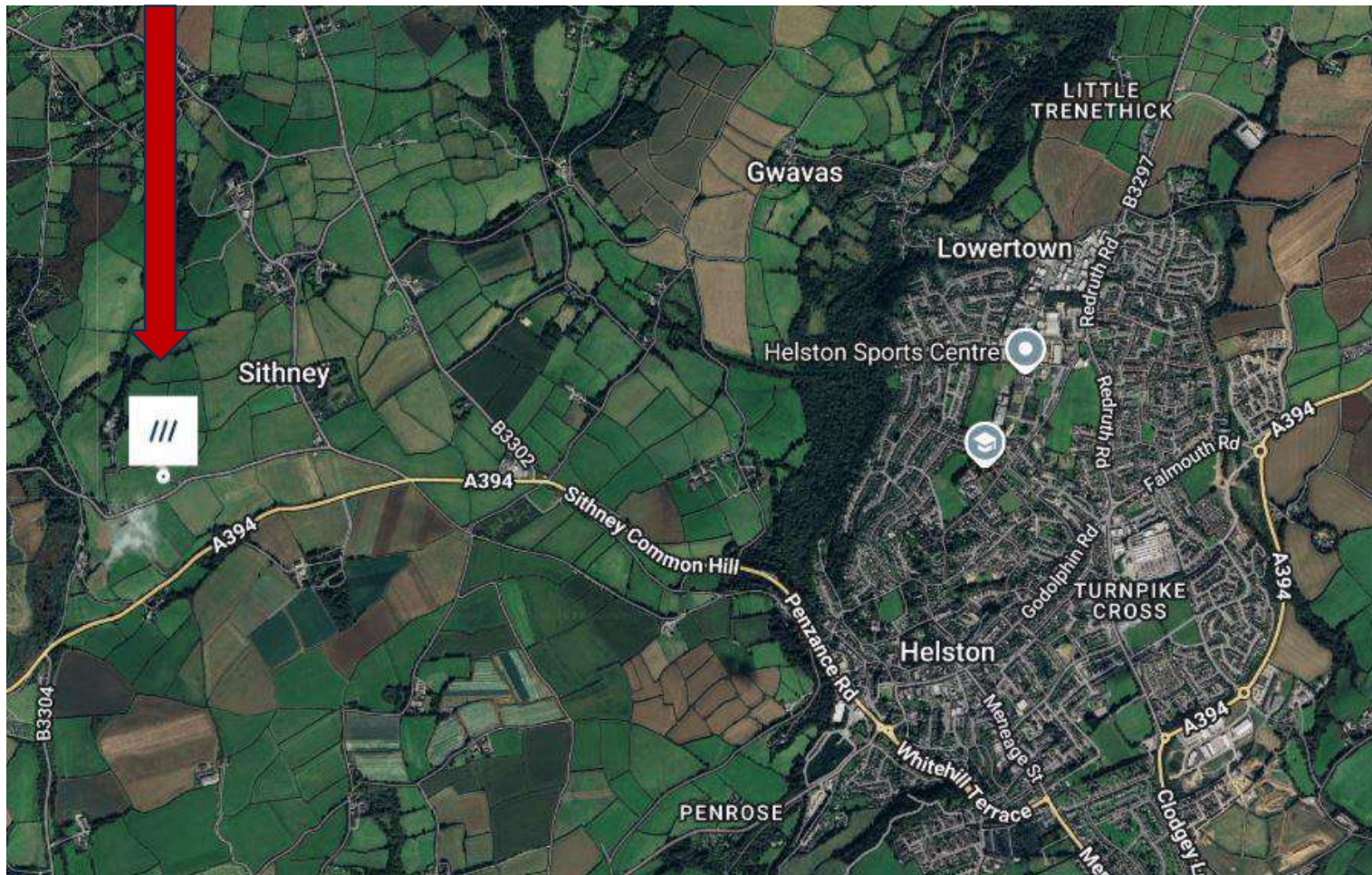
Haulier		
P R Weldhen	Newquay	01637 880087
A & B Contractors	Barnstaple	01271 882006
Nick Sampson	Barnstaple	01271 376701
Bob Davies Transport Ltd	Taunton	07977 504506
LG Haulage (light haulage)	Holsworthy	07787 450581
Cains Farm Ltd	Dorset	01297 489537
Simon Ford Transport	Newton Abbot	07970 818083
A T one & Sons Ltd	Hertfordshire	01707 642178
N R S Transport	Launceston	07773 779271
G T Stone & Son	Camborne	01209 713862
Jones Cornwall	Helston	07866 836309

Directions

Trelissick Farm, Sithney, Helston, TR13 0RL

What3Words: polygraph.challenge.dolphins

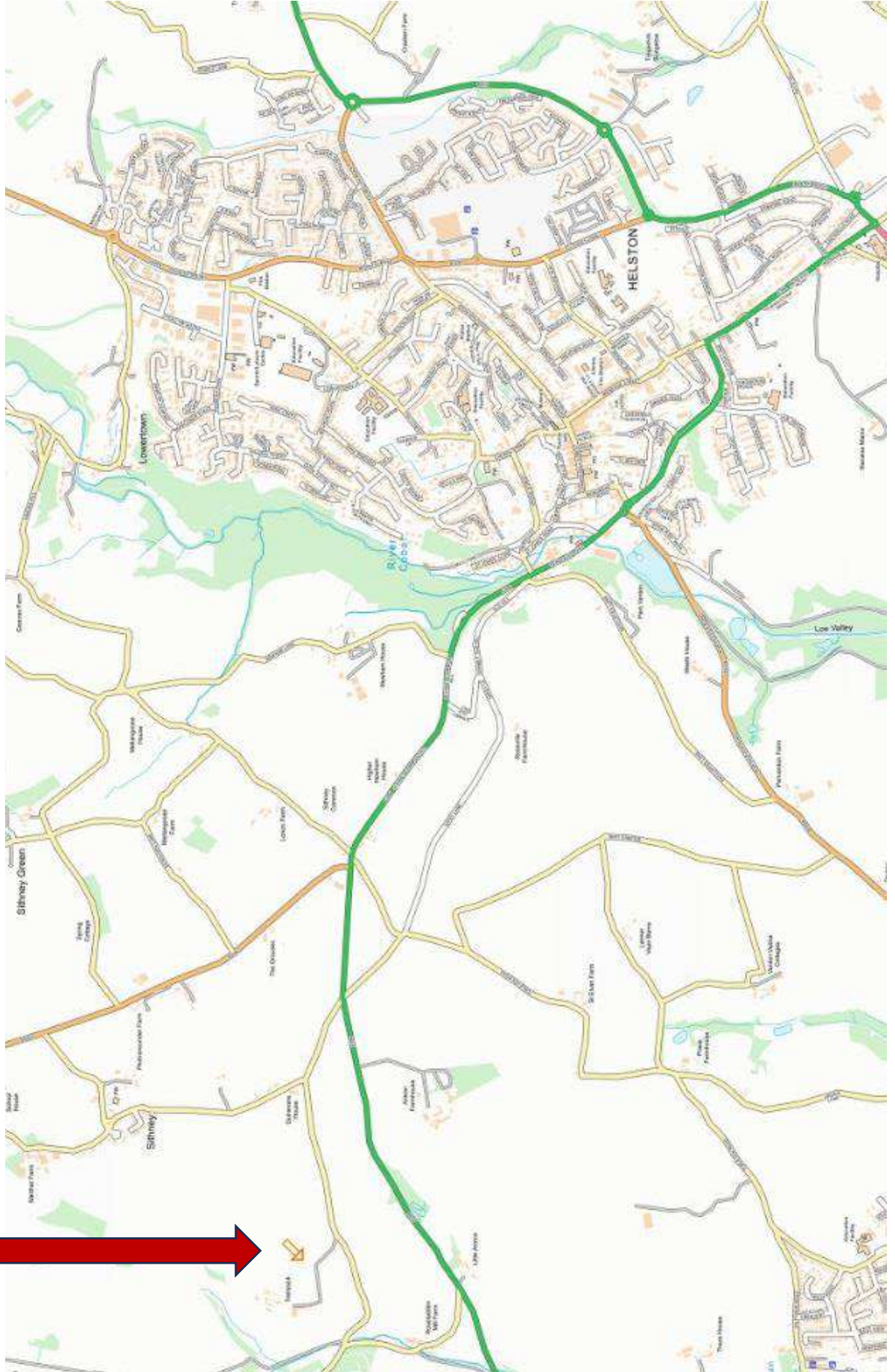
The sale will be signposted, please keep an eye out for our signs for guidance to the sale.



Directions

Trelissick Farm, Sithney,

Helston, TR13 0RL



ONLINE BIDDING AVAILABLE

Simply Download the **MartEye App** from your phone App Store & Register.
Then press the **JOIN** button on the **Kivells Machinery Page**

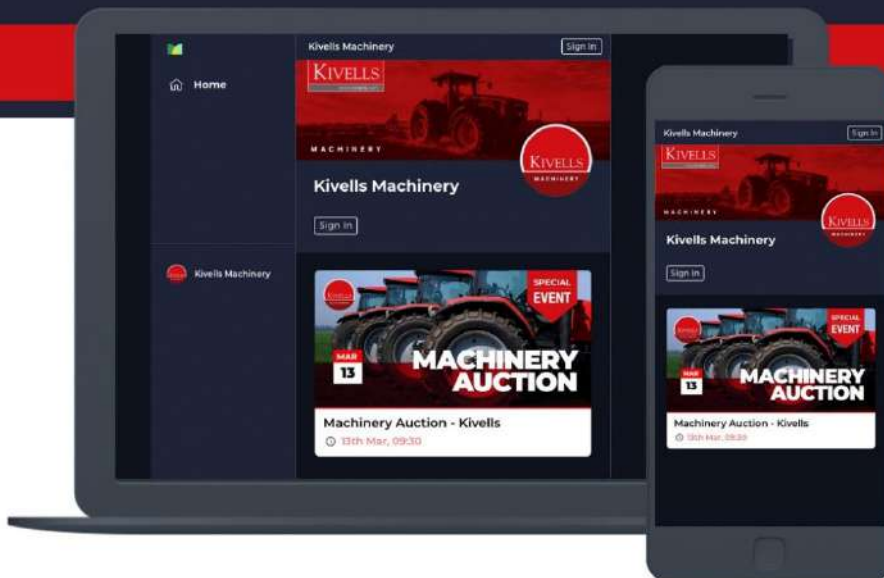
Your full details will be required for using online bidding and a trading reference **MUST** be provided prior to the sale day if you are not known to the Auctioneers. Applications made on the sale day for online bidding run the risk of not being approved. All buyers must ensure they have transport arranged prior to the Sale. All lots must be paid for prior to them leaving the Market.

Please Contact:
Holsworthy Market on 01409 253275



ALSO AVAILABLE ON WEBSITE:

kivellsmachinery.marteye.ie



2026 SALE DATES

KIVELLS
MACHINERY

Monthly Live & Online Collective Sales
of Machinery, Vehicles & Implements

Holsworthy Market

See our calendar for
full list of events



SATURDAY 13TH JUNE

SATURDAY 4TH JULY

SATURDAY 1ST AUGUST

SATURDAY 5TH SEPTEMBER

SATURDAY 3RD OCTOBER

SATURDAY 7TH NOVEMBER

SATURDAY 5TH DECEMBER

In addition to on-farm sales held throughout the year covering the whole of the South West

See our website for more info!

WWW.KIVELLS.COM | CALL: 01409 253253 | EMAIL: MACHINERY@KIVELLS.COM

KIVELLSMACHINERY.MARTEYE.IE

Tradition Meets Technology

Our team of Machinery Auctioneers & Coordinators are at hand to sell your farm machinery whether it be on site, online or at one of our many collective auctions conducted throughout the South West and beyond.



Kivells Machinery & Equipment Sales Online | On Site | On Market Premises

- 'Our expertise centres around the agricultural sector and as our clients have diversified so have we.
- We sell a huge range of machinery and equipment both into and out of the sector.
- Our online service offering is market leading and the feedback we have received both from our vendors and buyers bears that out. We are proud of our reputation and we are confident the choice of MartEye as Kivells online service partner will add to that.
- Our policy is to offer the best online capability combined with tried and tested traditional methods. We recognise the role auctions play in the agricultural community enabling people to gather and meet and the wellbeing benefits that brings. It is all about achieving the right balance in a safe environment and at the same time maximise the realisation for our vendors and ease of use for our buyers. We believe Kivells combination of market leading sales technology and respect for tradition does just that.'

Thinking of Selling? Feel free to contact me or any of our team for a confidential discussion. It is never too early to plan and prepare'.

David Kivell
Head of Machinery & Heritage Department

www.kivells.com | machinery@kivells.com

Holworthy Livestock Market,
New Market Road, Holworthy, Devon EX22 7FA
01409 253253

Exeter Livestock Centre,
Matford Park Road, Exeter, Devon EX2 8FD
01392 251261

