

LIVE & ONLINE

# MACHINERY

## *On Farm Dispersal*

MAY

24

10.30 am

On behalf of  
Mr B Clarke



MartEye

Premier Barton Farm, Higher Ashton, Exeter, EX6 7QR

DISPERSAL SALE OF TRACTORS, MACHINERY, IMPLEMENTS & EFFECTS

**KIVELLSMACHINERY.MARTEYE.IE**

01392 251261 | MACHINERY@KIVELLS.COM | WWW.KIVELLS.COM

# Notice to Purchasers

## SALES CONTACT:

IAN CAUNTER	07813 068935
MARK DAVIS	07773 371774
OFFICE	01392 251261
BARRY CLARKE (VENDOR)	07976 613580

- 1. Registration and Bidding ONLINE-** ONLINE BIDDING is via Marteye, intending bidders must download the MartEye App from your phone App store where you can register. Once you have downloaded the App you need to go on the Kivells Machinery Page and **Sign in** with your details and then click the **Join** button. You can also access MartEye through **kivellsmachinery.marteye.ie** where you will be directed straight to our page and you will be required to **Sign in** with your details and then click the **Join** button. Once you have done this process your application will come through to us for approval. **We strongly advise registering well ahead of the sale as 'late' registrants, on the morning of sale, run the risk of not being approved in time.**
- 2. Registration and Live Bidding** All those attending the sale in persons will be required to register in the Kivells Pay Office whereby you will obtain a Bidding Card. The Bidding Card will be used to bid on the sale items.
- 3. Commission Bids** - Kivells encourage the use of the Bidding Form which can be downloaded from [www.kivells.com](http://www.kivells.com) and phone bids may be possible - please contact the Auctioneers prior to the sale day.
- 4. Registration and Conditions of Sale** - Kivells reserves the right to request additional information to include Driving License/Passport together with a Business Card/Utility Bills/Proof of Address/Business Letter Heading and the right to request a deposit ahead of any purchase or during sale proceedings. Kivells also reserve the right to deregister Buyers. It is strongly recommended that Bidders and Buyers read Kivells Standard Terms and Conditions of Sale ahead of the sale. Once you have registered you are confirming that you have read, agree with and will abide by those Conditions and these Notice to Purchasers. In registering you warrant that the information is correct, up to date on the sale closure date and you are over the age of 18. All registrations are provisional and subject to the approval by Kivells.
- 5. Lot Viewing** – Viewing is permitted on the designated dates and times only unless previously agreed with the auctioneers. When inspecting lots, we encourage you to maintain a safe social distance.  
Viewing Date(s) and Times are: Friday 23<sup>rd</sup> – 2.30pm to 4.30pm and from 8am on the morning of the sale.
- 6. Health & Safety** - Kivells do not accept any liability for any damage or injury to persons, vehicles, plant, machinery, equipment or any lot not arising out of their negligence. When lots are located on The Sellers premises or 3<sup>rd</sup> party storage facilities then the aforementioned are responsible for Health & Safety. Any person entering the Sale ground does so at their own risk, must comply with the requirements of any Health and Safety notices and guidelines and be appropriately dressed. All persons entering the premises are hereby given notice that there are significant risks due to the range and display of equipment, vehicle movement and the nature of the premises. Caution should be exercised, and children must be fully supervised at all times. Children are not permitted to sit on, lean on, push or climb on any machinery, mobile plant etc. and should be kept away from any powered machinery and equipment. Permission from the Auctioneers / Seller or storage facility manager is required ahead of starting powered equipment or machinery. Any incidents or accidents on the premises should be reported to Kivells/ Seller or storage facility manager immediately. Kivells reserve the right for themselves and their Sellers and 3<sup>rd</sup> party storage facilities to refuse admission to any person or vehicle into the Sale ground without giving reason. The Auctioneers also reserve the right for themselves and the Sellers and 3<sup>rd</sup> party storage facilities to halt any removal in the event there are concerns over the Buyer's or their contractor's capability and methods. The right extends to requesting confirmation of insurance cover, method statements and other assurances to include returnable deposits.

# Notice to Purchasers

7. **Descriptions of Lots** - Kivells has limited access to lots prior to sale and therefore Buyers should satisfy themselves prior to making bids as to the condition of any Lot and should rely on their own judgement as to whether the Lot accords with its description. All Lots are sold with all faults and imperfections and errors of description. All statements are the Auctioneers or Sellers opinion and are not statements or representations of facts. You do not have to bid.
8. **Payment - Currency GBP** – Onsite Attendees - Day of Sale: Online Bidders - The auctioneers will either 1) contact you on day of sale for immediate payment or 2) will email an invoice on the first weekday following the close of the sale. With email payment is thereafter due no later than 24 hours from the time of forwarding the invoice. Payments will be due in full at the final bid price in respect of the lot sold plus all associated costs, Buyer's premium and VAT. Payment will only be accepted from the successful purchaser or their duly appointed agent. Any payment is to be by a means approved by the Auctioneers and include the Buyers Commission and VAT. Our terms are strictly cash, Bank Transfer, Debit Card, NO Credit Cards are accepted. Our Bank Account details are: Sort Code 56-00-49 Account Number 32532822.
9. **Payment in Cash** - In order to comply with money laundering regulations, The Auctioneers will not accept Cash payments above the maximum permitted at the time of sale. The maximum varies according to exchange rates and currently it is circa £7,000 - £9,000. Buyers are advised to check with the Auctioneers ahead of the sale.
10. **Commission/Buyers Premium** - All Lots will be subject to a Buyers Commission / Premium whether sold by auction, by private treaty or tender pre or post sale. VAT at the standard rate will be charged on all commissions. Buyers shall pay Commission to the Auctioneers at the following rates:
  - **10% on any single lot up to and including £2000**
  - **5% on any single lot over £2000 & up to a maximum of £30,000**
  - **Any single lot over £30,000 will be subject to a commission 'cap'****Currency GBP**
11. **Risk** - All lots remain at the risk of the Buyer from the fall of the hammer/closure of bidding for each lot and it is strongly advised that the Buyer effects insurance immediately.
12. **Collection of Lots** - All lots must be removed from the Sale ground by end of play sale day (unless other arrangements have been made with the seller or the auctioneers). When removing lots, please ensure you maintain a safe social distance. Lots can only be removed once full payment has been made. The Buyer is responsible for the collection of their lots and any associated costs of transport. Assistance with loading by The Auctioneers, Seller or the storage facility is given without any liability to The Buyer or The Buyers removal contractor. Buyers are strongly advised to use their own suitably qualified and insured contractors.
13. **Value Added Tax** - Please be aware some lots may be subject to VAT and therefore VAT will be charged in accordance to the current rate and added to all accounts and is applicable to the Commission/Buyers Premium. VAT status will be clearly stated in the Lot description.

# Notice to Purchasers

14. **Export of Lots** - All goods purchased from Kivells auctions that are to be exported or removed from the United Kingdom will:

1. Be dealt with under the requirements set out of HM Customs and Excise publications:

a) VAT Notice 703 dated January 2021 – Goods exported from the UK from 1st January 2021.

2. Be Zero rated for VAT purposes subject to the following conditions being met.

a) The goods are removed from Great Britain within three months from the time of supply (the date of auction).

b) Kivells are provided with valid written evidence that the Lots have been removed from Great Britain within three months of the auction closure date. Unless and until the above requirements are fulfilled Purchasers will be charged VAT at the Great Britain standard rate (currently 20%). This will only be refunded if all requirements within the regulations are met within the specified time limits.

The Purchaser or their agent will be responsible for removing the Lots from Great Britain and will act as the importer of record and will be responsible for payment of any VAT, duties, goods and services tax, or other sales or import taxes or duties arising on the exportation of the goods from Great Britain and the importation of the goods into any country.

Neither Kivells or the Seller are responsible for any VAT, duties, goods and services tax, or other sales or import taxes or duties arising on the exportation of the lots from Great Britain and the importation of the lots into any country by the Purchaser or their agent.

Kivells recommend exporters visit <https://www.gov.uk/check-customs-declaration>

**ANY PHYTOSANITARY CERTIFICATION AND DOCUMENTATION REQUIRED TO EXPORT LOTS FROM GREAT BRITAIN ARE STRICTLY THE RESPONSIBILITY OF THE PURCHASER.**



## ONLINE BIDDING AVAILABLE

Simply Download the **MartEye App** from your phone App Store & Register.  
Then press the **JOIN** button on the **Kivells Machinery Page**

Your full details will be required for using online bidding and a trading reference **MUST** be provided prior to the sale day if you are not known to the Auctioneers. Applications made on the sale day for online bidding run the risk of not being approved. All buyers must ensure they have transport arranged prior to the Sale. All lots must be paid for prior to them leaving the Market.

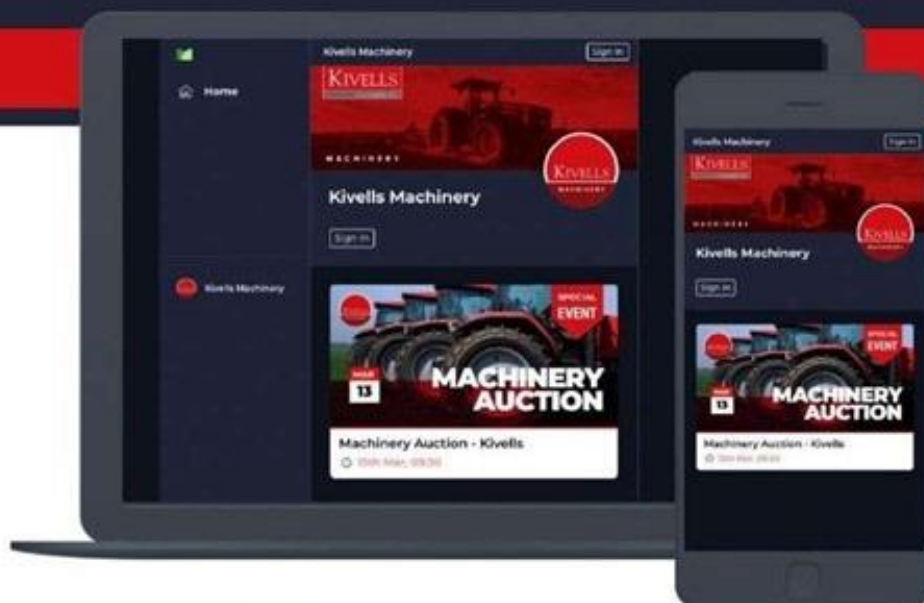
Please Contact:

**Exeter Livestock Centre on 01392 251261**



**ALSO AVAILABLE ON WEBSITE:**

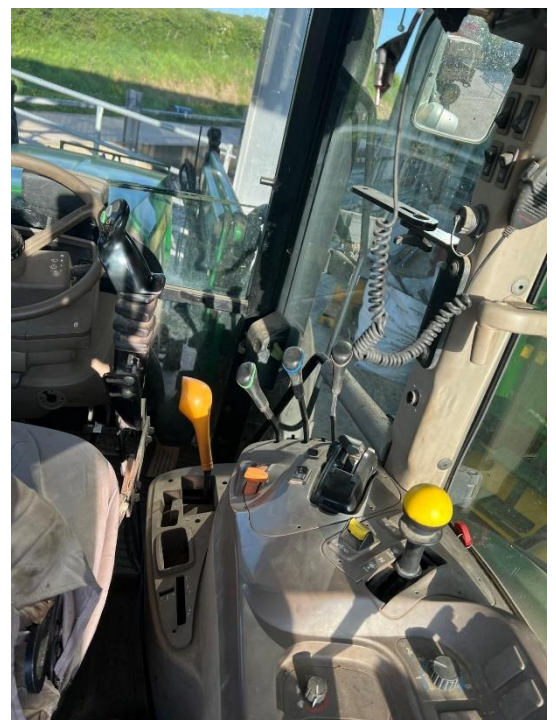
**[kivellsmachinery.marteye.ie](http://kivellsmachinery.marteye.ie)**



**MartEye**

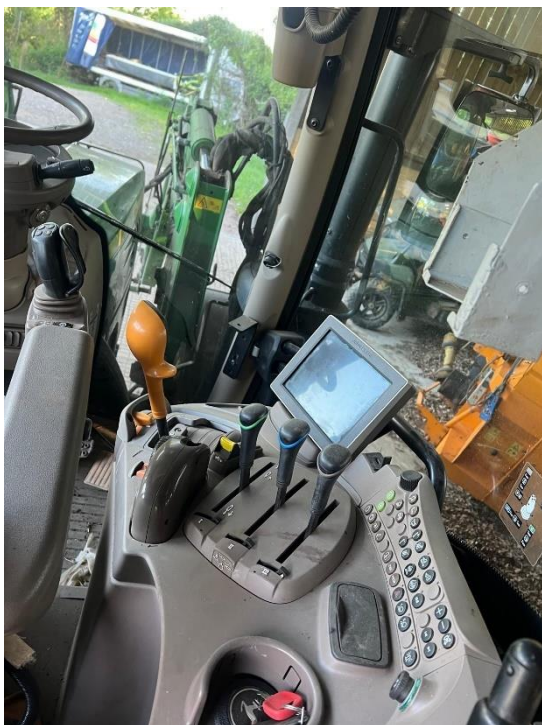
# John Deere 6110MC

c/w U308 MX Loader  
Reg: WG15 | Hrs: 5280 approx.



# John Deere 6130R

c/w 623R Loader  
Reg: WG68 | Hrs: 1750 approx.



# Ford 4000



# Hitachi Excavator EX75 UR-3



# John Deere 6630 Premium

Reg: PO58 | Hrs: 5880 approx.

Note: Previously 'Written Off', understood to be Category S



# Kubota M9540

c/w LA1353 Loader

Reg: CU59| Hrs: 6550 approx.

Note: Previously 'Written Off', understood to be Category S



# Maniscopic Manitou

MLT 627 Turbo

Reg: CX09 | Hrs: 5800 approx.

Note: Previously 'Written Off', understood to be Category S



# JCB Telehandler

Hrs: TBC.

Note: Previously 'Written Off', understood to be Category S



# Ford Ranger

Year: 2023 | Miles: TBC.

Note: Previously 'Written Off', understood to be Category S



# Ford Ranger

Year: 2023 | Miles: TBC.

Note: Previously 'Written Off', understood to be Category S



# John Deere Gator 855D

Hrs: TBC.

Note: Previously 'Written Off', understood to be Category S



# VDW Fodder Bucket & Auger



## Boscaro Block Grab



# 2000 West Dung Spreader



# 1300 West Dung Spreader



# Claas 621 Mower 100

Disco 3050 | Year: 2010



# John Deere 578 Round Baler



# Einbock Grass Harrows



# Parmiter Hydraulic Chain Harrows



# Claas Liner 2600 985 Rake

Year: 2018



# Claas Volto 800 6 Star Tedder

Year: 2015 | Type: G53



# Triple K Cultivator



# Amazone Fert Spinner



# Cattle Feed Trailer



# Bale Trailer



# Ifor Williams Stock Trailer



# Evan Trailers Stock Trailer



# Grain Trailer



# Grain Trailer



# Belair Straw Chopper



# Lucas Mounted Straw Chopper

Note: Previously 'Written Off', understood to be Category N



# Abbey VF2650 Mixer Wagon



# McConnel Hedge Trimmer

PA50 ELH-02



# Link Box



## Qty of Calf Creep Feeders



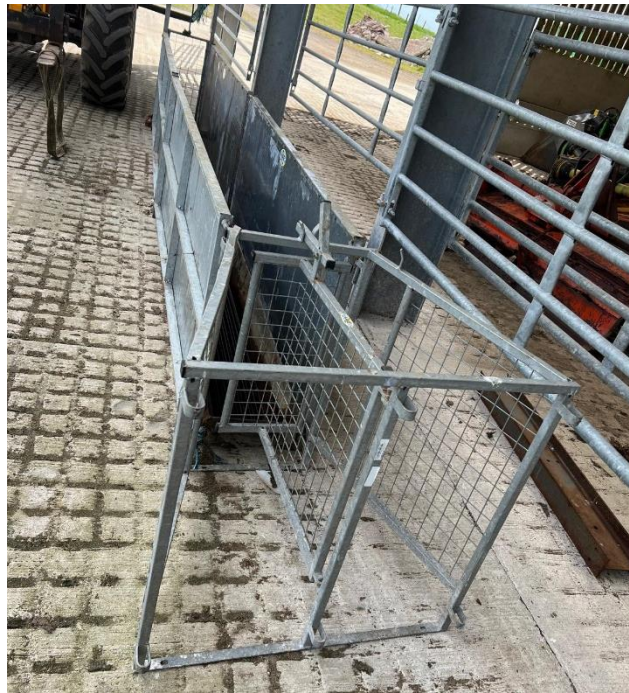
# Qty of Cattle Feeders



## IAE Cattle Crush



# IAE Sheep Race



# IAE Lamb Weigh Scales



# Other Entries Include

- Zetor 6748
- Kuhn Feeder Wagon EURI 870 – Year: 2003
- Side Discharge Dung Spreader
- Mulching Topper
- 4 Furrow Reversible Plough
- Bale Trailer
- Tipping Trailer
- Brian Legg Trailer – Hydraulic Tail Gate
- Bale Spike (Chilton Bracket)
- Shwetu Dung Grab
- Pallet Forks
- Dung Grab
- Albut Bale Spike
- Albut Shear Grab
- Chilton Loader Bucket
- Flat 8 Grab
- Browns Scrape
- Korte 700 52 Corn Miller
- Shedding Gates
- Qty of Yard Gates
- Qty of Cattle Troughs
- Qty of Workshop Tools & Equipment

# Notes

## Directions

## Premier Barton Farm, Higher Ashton, Exeter, EX6 7QR

## What 3 Words: workbook.shine.breath



# Tradition Meets Technology

Our team of Machinery Auctioneers & Coordinators are at hand to sell your farm machinery whether it be on site, online or at one of our many collective auctions conducted throughout the South West and beyond.



**Kivells Machinery & Equipment Sales**  
**Online | On Site | On Market Premises**

- 'Our expertise centers around the agricultural sector and as our clients have diversified, so have we.
- We sell a huge range of machinery and equipment both into and out of the sector.
- Our online service offering is market leading and the feedback we received both from vendors and buyers bears that out. We are proud of our reputation, and we are confident the choice of Marteye as Kivells online service partner will add to that.
- Our policy is to offer the best online capability combined with tried and tested traditional methods. We recognize the role auctions play in the agricultural community enabling people to gather and meet and the wellbeing benefits that brings. It is all about achieving the right balance in a safe environment and at the same time maximize the realization for our vendors and ease of use for our buyers. We believe Kivells combination of market leading sales technology and respect for tradition does just that'

Thinking of Selling? Feel free to contact me or any of the team for a confidential discussion.  
It is never too early to plan and prepare'

**David Kivell**  
**Head of Machinery & Heritage Department**



**[www.kivells.com](http://www.kivells.com) | [machinery@kivells.com](mailto:machinery@kivells.com)**

Exeter Livestock Centre  
Matford Park Road, Exeter, Devon, EX2 8FD  
01392 251 261

Holsworthy Livestock Market  
New Market Road, Holsworthy, Devon, EX22 7FA  
01409 253253

# Forthcoming Machinery Sales

## **SATURDAY 31<sup>ST</sup> MAY**

HOLSWORTHY LIVESTOCK MARKET, NEW MARKET ROAD, HOLSWORTHY, EX22 7FA  
MONTHLY LIVE & ONLINE MACHINERY SALE

## **SATURDAY 5<sup>TH</sup> JULY**

HOLSWORTHY LIVESTOCK MARKET, NEW MARKET ROAD, HOLSWORTHY, EX22 7FA  
MONTHLY LIVE & ONLINE MACHINERY SALE

## **SATURDAY 26<sup>TH</sup> JULY**

BOLITHO FARM, LISKEARD, CORNWALL, PL14 3GR  
LISKEARD & DISTRICT COLLECTIVE MACHINERY & SHEEP SALE

## **SATURDAY 2<sup>ND</sup> AUGUST**

HOLSWORTHY LIVESTOCK MARKET, NEW MARKET ROAD, HOLSWORTHY, EX22 7FA  
MONTHLY LIVE & ONLINE MACHINERY SALE

## **MONDAY 25<sup>TH</sup> AUGUST (BANK HOLIDAY)**

SMEATHARPE AIRFIELD, SMEATHARPE, HONITON, DEVON, EX14 9RF  
THE HONITON HILL RALLY AUCTION

## **SATURDAY 6<sup>TH</sup> SEPTEMBER**

HOLSWORTHY LIVESTOCK MARKET, NEW MARKET ROAD, HOLSWORTHY, EX22 7FA  
MONTHLY LIVE & ONLINE MACHINERY SALE

## **SATURDAY 20<sup>TH</sup> SEPTEMBER**

COLMER VIEW FARM, CALIFORNIA CROSS, MODBURY, DEVON, PL21 0SG  
SOUTH DEVON COLLECTIVE MACHINERY SALE

## **SATURDAY 27<sup>TH</sup> SEPTEMBER**

ON FARM DISPERSAL SALE OF FORAGER, TRACTORS, MACHINERY, IMPLEMENTS &  
EFFECTS