



# EXETER LIVESTOCK CENTRE

# MARKET REPORT MAY 2026

Friday 1<sup>st</sup> May – Store Stock Market



# MyFarmWorks

Brought to you by

Shearwell  
Data

Livestock Systems

**DEMO EVENT**

Join us at our  
**MyFarmWorks**  
**Demo Event** –  
we'd love to see  
you there!



Meet your local rep  
**Hollie Govier**

## Exeter Livestock Centre

Friday 29<sup>th</sup> May | 10am-1pm  
Matford Park Road, Exeter, Devon, EX2 8FD

Friday 1<sup>st</sup> May 2026

**497 STORE CATTLE AND STIRKS– 10.00am**

Auctioneer: Simon Alford – 07789 980203

## Store Steers to £2400 – Store Heifers to £1840

Fewer store cattle now coming forward as we enter the month of May with perhaps the general quality also not as good as we have seen them of late either. Demand looked to be levelling off too with another full ringside of buyers ensuring all on offer were no less money than they were last Friday. Barry Milden and Family of Cadbury were back for a second week and selling more of those high calibre Charolais bred steers (24m) to a creditable £2400 apiece for a pen of four followed by more tremendous Charolais in the way of five younger (17m) sorts at £2040 a head for Phillip and Richard Coaker of Postbridge. Also, later again born Charolais bullocks (14m) from Willie Jamison and Family in from Lifton drew £1800 each for a pair. Strong black Limousin steers (22m) sold on behalf of Tom Wotton and Family from Moretonhampstead eased to a decent enough £2260 for a trio whilst three muscled red Limousins (20m) from AJ Smith and Son, East Budleigh ran to £1900 a life. A well fed consignment of store cattle from J & K Northcott up from Tideford saw their very best rise to £2190 for a glorious Aberdeen Angus steer (18m) together with others, slightly younger still reaching £2070 and their better Devon and Hereford steers (18m) both fetching £1990. More good Herefords (22m) saw £1990 for G Parkman of Stoodleigh. British Blue steers up next when a well farmed pen of three (28m) from Peter Hooper of Bovey Tracey grossed £2180 apiece with a smart single blue (25m) sold by Steve Baker of Kennford making £1980 and others close at £1980 and £1960 for Tom Wotton and Family and AJ Withers and Sons of Cove respectively. The better of the South Devon steers came from John and Arthur Cuming in from Moretonhampstead with their pen of four (24m) selling well and for £1930 a time. No great headline makers in the store heifer section this week when we saw a top of £1840 given for a shapely Hereford (28m) from Colin and Philip Gibbins of Feniton whilst a trio of younger Herefords (24m) from G Parkman came back at £1800 a life. Tom Wotton and Family were back when selling powerful British Blue females (24m) to £1820 with Aberdeen Angus (17m) returning £1730 for J & K Northcott and South Devon heifers (24m) close at £1720 for Chris and Barbara Palk of South Brent. Several grazing cull cows about this week with the very best rising to £2050 for Lee Bright of Ashburton followed by Simmentals from Martin and Dave Sampson of Chudleigh at £1900. Also, close, was a portly Devon crossbred cow from Sandy Harvey from Broadwoodwidge at £1890. Best of the rest saw a couple of Limousin cows from Phil Rogers up from Noss Mayo sell to £1680 and £1630 followed by a pen of three proper grazing type South Devon barreners at £1630 a life for Dave Mudge of Hexworthy.

**Red Tractor** Please ensure you inform us if your Red Tractor status has changed since last consigning stock with us or if the residency rules for the animals you are selling have not been met.

**Please could we remind all customers of the need to clean and disinfect their vehicles and to complete the Vendor Declaration on the back of the entry forms. Thank you**



**Penbode**  
Farm Vets

- Competitively priced farm medicines
- Dairy and beef fertility clubs
- 24/7/365 veterinary cover
- Livestock fertility testing and advice
- VetTech services
- In-house labs and lambing bays

[www.penbodevets.co.uk](http://www.penbodevets.co.uk)  
Holsworthy | Bradworthy | Stratton | Launceston | Camelford

## 170 STIRKS & SUCKLED CALVES

Auctioneer: Ian Caunter 07813 068935

Trade sharper on the week with the best topping out at £1700 for Sandra Harvey of Lifton selling Charolais cross steers (14m). A & V Tiernan of Newton Abbot sold Simmental cross steers (12m) to £1600 with others (11m) to £1340. L & M Bright of Newton Abbot sold Simmental cross steers (13m) to £1440 whilst Berny Serpell of Ivybridge sold Charolais cross steers (13m) to £1340. Best of the dairy bred types saw Ross Govier of Dunsford sell Simmental cross steers (11m) to £1310. Richard Langdon of Molland sold neatly presented Charolais cross steers (6m) to £1280 with Limousin cross steers (9m) to £1150. Hatherleigh Farms sold further Charolais cross steers (10m) to £1280 whilst dairy bred Angus steers from James Irish of Broadhempston topped out at £1280 (13m) with similar goods from Terry & Jean Tall of Modbury selling a little less at £1270. Charolais cross steers from IG Mortimore & Son of Chagford achieved £1270 (11m) whilst best of the South Devon steers topping out at £1160 (9m) for Brittan & Co of South Brent. Heifers topped out at a colossal £1560 for Miles & Helen Partridge of Poundsgate presenting a smashing pen of Charolais cross heifers (11m). Similar goods from Sandra Harvey achieved £1430 and £1340 (11m) whilst dairy bred types reached £1280 for Ross Govier selling Simmental crosses (11m) with others to £1250. Simmental cross heifers from A & V Tiernan achieved £1120 (12m). Best of the natives saw Hereford crosses (12m) attain £1110 for Sandra Harvey, closely followed by IG Mortimore & Son selling Charolais cross heifers (11m) to £1100. Angus heifers from David & Justine Colton of Princetown levelled out at £1060 (10m) with younger types achieving £960 whilst a pen of neat, young South Devon heifers from Brittan & Co (7m) realised £960. Bulls topped out at £730 for young Limousin crosses (5m) for PI & MJ Johns & Sons of Lapford. Trade faster on the week with buyers looking to purchase younger cattle. More kindly requested in the coming weeks.

## 96 CALVES 10.15 AM

Auctioneer: Mark Davis 07773 371774

### A smaller entry and a very mixed show of calves sold to another super trade!!

Top of the bull Calves was £750 twice for Limousin bulls from Michael Pyle of Broadhempbury. British Blue bulls to £630, £580 & £510 for Cooper Farm Partnership of Ivybridge with others to £620 for Andrew & Racehl Webber of Cullompton. Native bulls topped at £550 for young Aberdeen Angus bulls from Buddleford Partnership of Clyst Hydon with others to £545 JLH Vallis & Son of Bradninch. Hereford bulls to £540 x 2, £535 & £500. Longhorn bulls to £440 for Phil Humphrey of Axminster. Shorthorn bulls to £500 for H & M Dunn of Drewsteighton. **Heifers topped at £800** for a smart young Limousin heifer from Michael Pyle who sold others to £680 x 2 & £530. British Blue heifers to £550 & £540 for Buddleford Partnership with others to £540 for Phil Humphrey and £485 for CJ Radford & Son of Tiverton. Hereford Heifers to £490, £480 x 2 & £460 for Buddleford Partnership. Aberdeen Angus heifers to £470 & £418 for JLH Vallis & Son. **Dairy Bulls to £230** for Lower Collipriest Farm Ltd of Tiverton and £220 & £200 for Roger Pennington of Crediton who also sold some breeding Friesian Heifer calves to £450, £390 & £360. Ayrshire bulls to £150 & £145 for Messrs Nicholls of South Molton.

CALVES	Bulls			Heifers		
		TOP	AVE		TOP	AVE
<b>British Blue</b>	8	630	495	11	550	422
<b>Limousin</b>	2	750	750	6	800	593
<b>Aberdeen Angus</b>	4	550	382	10	490	335
<b>Hereford</b>	11	540	382	10	490	335
<b>Longhorn</b>	4	440	300			
<b>Shorthorn</b>	3	500	305			
<b>Ayrshire8</b>	8	150	130			
<b>Friesians</b>	14	230	177	5	450	370

**1381 SHEEP – 10.45 AM**  
Auctioneer: Russell Steer 07788 318701

**Orphan Lambs to £120      Store Hogs to £180      New Season Stores to £161**  
**Grazers to £189      Ewes with Twins to £448      Ewes with Singles to £360**  
**Hoggs with Twins to £395      Hoggs with Singles to £405**

**79 ORPHAN LAMBS**

Slightly fewer orphans this week but still a very respectable trade with the forward wean-able sorts selling at big money with WA Cleave of Kentisbury reaching £120 followed by the Heard family of Meldon, Okehampton claiming £83 and a nice bunch of Suffolk x Mule lambs from the Reddaway family of Sampford Courtenay saw four make £80 and the rest sell at £52. Other strong lambs at £72 for Russell James of Ashburton and £70 twice for Martin Pearse of North Huish. Setting on lambs from £25 to £45 and the average was pretty much unchanged at £41.49.

**281 STORE HOGGS & NEW SEASON LAMBS**

Numbers really beginning to dry up now as expected for the first week of May, trade still strong though and all competitively bid for with tops in the hoggs of £180 for both Stephen Cleverdon of Hatherleigh and Dave Webber of Umberleigh with both the Heard family of Meldon and Richard Beckley of Black Dog at £179 and Vincent Market Gardens of Plymouth close up behind making £178.50 of a large pen. Lots of business done between £155 and £175 with the best of the new season stores reaching £161 for Chris Hall of Blandford. Overall average £140.11.

**39 GRAZING EWES**

A tight entry but plenty of trade with the Heard family topping here with a Texel x Mule at £189 as well as a penful of Mules at £148 whilst Jonathan & Pamela Rich of Yarcombe sold a Suffolk x ewe at £180 and Dave Webber sold a wether with a story to it for £174. Some really plain genuine grazers at the other end of the spectrum selling on realization between £55 and £75 depending on breed and they averaged £120.

**401 EWES/HOGGS & 573 LAMBS (974 LIVES)**

This week's sale included the first of the season's catalogued sale of Hoggs with lambs at foot that drew a large crowd ready to spend and prices achieved were well up on the year. A trio of Texel x mule Hogg singles from Messrs Milborne Wick Farms of Sherborne topped the trade at £405 as well as their Suffolk x Mule hogg singles at £390, some with younger lambs at £310, a Suffolk x double attaining £395 and Texel x double at £385. Cheviot Mule hogg singles rose to £325 for Matt Wreyford of Blackawton as NC Mule hoggs singles saw a rise of £42 on the year for annual consignors Gary & Helen Woodman of Chawliegh when their large pens of strong singles sold at £322, £322 & £305. A good run of Texel x hoggs from Brian Clothier and family of Radstock sold readily in large lots at £320, £310 & £300 and a few other hogg singles were usually all £260 plus.

Ewes and lambs reached £448 for an eye catching Texel type ewe from Robert & Rebecca Jordan of Chagford with a smart pair of Bleu de maine sired lambs at foot that saw Cheviot Mule and Suffolk x ewes with double lambs of the same breed and from the same home sell at £412 & £392. BH Lane of Combe Raleigh had Texel x doubles at £390 as well as singles at £328 and £310 as Jock & Katherine Muirhead of Watchet had Texel and Cheviot x doubles reach £362 as well as their best singles at £288 & £282. Best of the singles rose to £360 for 6T aged Texel crosses from Alex Lawler of Nomansland who had his second pen at £322 and further strong singles sold to £330 for Peter Tucker of High Bickington, £310 for Stephen Cleverdon and £300 for Jonathan & Pamela Rich of Yarcombe. Hill ewes out in force with Jack Haskell of Wareham selling F/BM Cheviots with young lambs at £248 & £242 for the twins and £212 for the singles and Jack Kendall of Bodmin had Scotch and Welsh type FM ewes with singles to £195 & £182 whilst a 4 + 7 made £190 and £69/life. Overall averages of £277 per outfit and £114 per life.



## FARM MACHINERY PROPERTY MARKING EVENT/DEMONSTRATION

**Date: Friday 1<sup>st</sup> May 2026**

**Venue: MATFORD LIVESTOCK MARKET**

**Time: 0900hrs-Midday.**

**Come and meet Devon and Cornwall Police Rural Affairs Team, discuss crime prevention/security measures and forensic property marking opportunities. We look forward to seeing you all.**



*\*\*Other products are available via the SBD website-Police Preferred Specification on all crime prevention practices*

## FORTHCOMING SALES

**MONDAY 4<sup>TH</sup> MAY – EXETER LIVESTOCK CENTRE**

*Weekly Prime Stock Market*

**TUESDAY 5<sup>TH</sup> MAY – EXETER LIVESTOCK CENTRE**

*Dorset Horn & Poll Dorset May Fair Show*

**WEDNESDAY 6<sup>TH</sup> MAY – EXETER LIVESTOCK CENTRE**

*Dorset Horn & Poll Dorset May Fair Sale*

**FRIDAY 8<sup>TH</sup> MAY – EXETER LIVESTOCK CENTRE**

*Weekly Store Market to include Sale of Dairy Cattle & Fortnightly Pig Sale*

**MONDAY 11<sup>TH</sup> MAY – EXETER LIVESTOCK CENTRE**

*Weekly Prime Stock Market*

**TUESDAY 12<sup>TH</sup> MAY – EXETER LIVESTOCK CENTRE**

*Sale of Dairy Cattle*

**FRIDAY 15<sup>TH</sup> MAY – EXETER LIVESTOCK CENTRE**

*Weekly Store Market*

**MONDAY 18<sup>TH</sup> MAY – EXETER LIVESTOCK CENTRE**

*Weekly Prime Stock Market*

**FRIDAY 22<sup>ND</sup> MAY – EXETER LIVESTOCK CENTRE**

*Weekly Store Market to include Fortnightly Pig Sale*

**MONDAY 25<sup>TH</sup> MAY – EXETER LIVESTOCK CENTRE**

*Weekly Prime Stock Market*

**TUESDAY 26<sup>TH</sup> MAY – EXETER LIVESTOCK CENTRE**

*Monthly Sale of TB Restricted (Orange Market) Cattle*

**FRIDAY 29<sup>TH</sup> MAY – EXETER LIVESTOCK CENTRE**

*Weekly Store Market to include Monthly Sale of Organic Cattle & Sheep, Monthly Catalogued Sale of Beef Breeding Stock including the Show and Sale of Cattle for the South Devon Breeders Club plus Early Sale of Accredited and Non Accredited Stock Rams*

**MONDAY 1<sup>ST</sup> JUNE – EXETER LIVESTOCK CENTRE**

*Weekly Prime Stock Market*

**FRIDAY 5<sup>TH</sup> JUNE – EXETER LIVESTOCK CENTRE**

*Weekly Store Market to include Catalogued Sale of Hogg Couples plus Fortnightly Pig Sale*

**MONDAY 8<sup>TH</sup> JUNE – EXETER LIVESTOCK CENTRE**

*Weekly Prime Stock Market*

**FRIDAY 12<sup>TH</sup> JUNE – EXETER LIVESTOCK CENTRE**

*Weekly Store Market to include Sale of Dairy Cattle plus 38<sup>th</sup> Annual June Sale of Early Breeding Ewes & Rams including Show & Sale of Dorset X Breeding Ewes.*

**MONDAY 15<sup>TH</sup> JUNE – EXETER LIVESTOCK CENTRE**

*Weekly Prime Stock Market*

**EXETER LIVESTOCK CENTRE**

01392 251261

[livestock@kivells.com](mailto:livestock@kivells.com)

[www.kivells.com](http://www.kivells.com)

# Farms | Land | Smallholdings

## Thinking of selling?

Kivells are at the heart of the farming community throughout the westcountry and beyond and have been selling farms, land and smallholdings since 1885.



### Our tailor made service includes;

- ✓ Personal and confidential service
- ✓ Experienced team of Farm Agents
- ✓ Tailor made marketing plans across a variety of platforms
- ✓ Network of contacts within the farming community
- ✓ Added value with advice on Tax, Planning and Stewardship



In-house  
bespoke  
brochures



Over 40,000  
followers on  
Social Media



Millions of  
page views on  
kivells.com,  
Rightmove  
& Zoopa



Coverage in  
national and  
regional  
publications

With 140 years of industry experience, we pride ourselves in providing friendly and professional advice on all aspects of selling your farm, land or smallholding.

## Rolstone Bungalow Morchard Bishop, Crediton

- A wonderfully presented and immaculate four bedroom Bungalow, subject to an Agricultural Occupancy Condition (AOC)
- Adjacent Workshop and Office Unit
- A useful Agricultural Building
- Well maintained productive Pasture Land
- In all totalling approximately 10.74 acres (4.34 hectares)
- EPC: C

**Guide Price: £925,000**

**Exeter Farms & Land Department**  
[exeter@kivells.com](mailto:exeter@kivells.com) | 01392 252262



# Farms For Sale

# KIVELLS

[www.kivells.com](http://www.kivells.com)

## Little Clamoak Farm Bere Ferrers, Yelverton

- A highly private and well located residential farm 4 bedroom dwelling, subject to AOC
- Adaptable range of farm buildings
- Productive run of land extending to just over 26 acres in all
- Sought after location on the Bere Peninsula overlooking the River Tamar
- Freehold with vacant possession available
- EPC: F

**Guide Price: £725,000**

**Exeter Farms & Land Department**  
[exeter@kivells.com](mailto:exeter@kivells.com) | 01392 252262



# Farms For Sale

# KIVELLS

[www.kivells.com](http://www.kivells.com)

## Holdstrong Farmhouse Coryton, Okehampton

- A delightful 5 bedroom 17th Century Devon Longhouse
- Situated in a beautiful rural setting on the edge of the Dartmoor National Park
- Superb views
- Stabling and further outbuildings
- Pond
- Coppice
- In all about 15.87 acres
- Freehold with vacant possession available
- EPC: E

**Guide Price: £850,000**

Exeter Farms & Land Department  
[exeter@kivells.com](mailto:exeter@kivells.com) | 01392 252262



# Farms For Sale

# KIVELLS

[www.kivells.com](http://www.kivells.com)

## Puddaven Farm North Bovey, Newton Abbot

- Immaculate Farmhouse
- Stunning two bedroom Holiday Cottage
- Outbuildings and stabling
- Outdoor equine menage
- Well-maintained pasture land
- Versatile lifestyle property
- Far reaching views
- In all totalling approximately 32.35 acres (13.09 hectares)
- EPC: E & D

**Guide Price: £1,695,000**

**Exeter Farms & Land Department**  
[exeter@kivells.com](mailto:exeter@kivells.com) | 01392 252262



# Farms For Sale

# KIVELLS

[www.kivells.com](http://www.kivells.com)

## Oxenpark Farm Hersham, Bude

- Wonderful setting with far reaching views over Bude Bay and the North Cornish coast.
- Three bedroom farmhouse and four further cottages
- Superb range of outbuildings suitable for a variety of uses
- In all about 16.18 acres with further land available by separate negotiation.
- Freehold
- Available as a whole or in three lots
- EPC: D, C, C, C & D

**Lot 1:** Three bedroom farmhouse, two holiday cottages, one further cottage and a lodge. Range of adaptable farm buildings, income generating wind turbine and just over 16 acres.  
Guide Price: £1,395,000

**Lot 2:** A useful block of 45½ acres of pasture and arable land including 3 acres of mature woodland.  
Guide Price: £515,000

**Lot 3:** A single gently sloping pasture field extending to 6.34 acres.  
Guide Price: £85,000

**Guide Price (as a whole): £1,995,000**

**Holsworthy Farms & Land Department**  
[farms@kivells.com](mailto:farms@kivells.com) | 01409 259547



# Farms For Sale

# KIVELLS

[www.kivells.com](http://www.kivells.com)

## Trehere Farm Trewidland, Liskeard

- Substantial four bedroom (all en-suite) modern house enjoying extensive country views
- Range of buildings currently comprising a livery yard with potential for alternative uses
- Approximately 36.51 acres of pasture, amenity woodland and a sand school
- Wonderful rural location yet conveniently situated close to several villages and the town of Liskeard
- EPC: D

**Guide Price: £995,000**

**Liskeard Farms & Land Department**  
[mark.bunt@kivells.com](mailto:mark.bunt@kivells.com) | 01579 345543



# Farms For Sale

# KIVELLS

[www.kivells.com](http://www.kivells.com)

## Barton Moor Meshaw, South Molton, Devon

- Three bedroom detached bungalow (AOC)
- Range of modern farm buildings with Class Q Permission for five dwellings
- Desirable and accessible location
- Freehold with vacant possession available
- In all about 4.22 acres
- EPC: 23 Band F

**Guide Price: £495,000**

**Exeter Farms & Land Department**  
[ben.hancock@kivells.com](mailto:ben.hancock@kivells.com) | 01392 252262



# Farms For Sale

# KIVELLS

[www.kivells.com](http://www.kivells.com)

## Landabethick Blisland, Bodmin

- Charming, 6 bedroom detached farmhouse
- Excellent range of traditional farm buildings suitable for a variety of uses
- In all about 77 acres comprising a combination of good agricultural land and woodland
- Parking, garaging and workshop space
- Unrivalled, private position at the end of a private drive
- Freehold with vacant possession available
- EPC: D

**Guide Price: £1,350,000**

**Exeter Farms & Land Department**  
[ben.hancock@kivells.com](mailto:ben.hancock@kivells.com) | 01392 252262



# Farms For Sale

# KIVELLS

[www.kivells.com](http://www.kivells.com)

## Great Huish Farm Tedburn St. Mary Exeter

- Grade II Listed detached four bedroom house with three reception rooms
- Two further cottages providing income generation or multi-generation living
- Ring Fenced Farm
- Range of modern and traditional farm buildings
- Development opportunities with some planning consent in place
- Easy access to the A30 & M5
- In all about 8.92 acres of agricultural land with further land available by separate negotiation.
- EPC: C

**Guide Price: £1,395,000**

**Exeter Farms & Land Department**  
[exeter@kivells.com](mailto:exeter@kivells.com) | 01392 252262



# Farms For Sale

# KIVELLS

[www.kivells.com](http://www.kivells.com)

## West Burrow Farm Bratton Clovelly, Okehampton

A quietly set rural small holding offering huge potential.

- Grade II\* Listed thatched farmhouse in need of modernisation.
- 3 beds, 2 receptions.
- Two adjoining traditional barns.
- Land and woodland
- EPC: Exempt as a listed property

Guide Price: £645,000

Holsworthy Farms & Land Department  
[farms@kivells.com](mailto:farms@kivells.com) | 01409 259547



# Farms For Sale

# KIVELLS

[www.kivells.com](http://www.kivells.com)

## Fern Hill Farm Mount, Bodmin

- Farm with significant development potential
- Range of agricultural and equestrian buildings
- 60.29 acres of land including productive pasture
- Two bedroom lodge
- Planning for farm dwelling and residential caravan
- Located in a super rural location with far reaching valley views
- Freehold with vacant possession upon completion

**Guide Price: £1,000,000**

**Liskeard Farms & Land Department**  
[mark.bunt@kivells.com](mailto:mark.bunt@kivells.com) | 01579 345543



# Development Site For Sale

# KIVELLS

[www.kivells.com](http://www.kivells.com)

## Development Site at Lower Newton Farm Zeal Monachorum, Crediton, Devon

- Valuable residential development opportunity
- Range of agricultural buildings with planning permission for demolition and creation of three new build, detached four and three bedroom dwellings
- Potential under extension of Permitted Development Rights for retention and conversion of the existing buildings (Clarkson's Law - Maximum 10 dwellings), subject to planning
- Additional land available

Guide Price: £450,000

Exeter Farms & Land Department  
[simon.alford@kivells.com](mailto:simon.alford@kivells.com) | 01392 252262



Aerial view looking north west

# Land For Sale

# KIVELLS

[www.kivells.com](http://www.kivells.com)

## Land At Trevillies

St. Keyne, Liskeard | Guide Price £375,000 -



Approximately 45.64 acres of productive arable/pasture land and amenity woodland with mains water connected. Freehold with vacant possession upon completion.

Liskeard Farms & Land Department  
[mark.bunt@kivells.com](mailto:mark.bunt@kivells.com) | 01579 345543

## Land at Stoke Canon

Exeter, Devon | Offers in Excess of £375,000

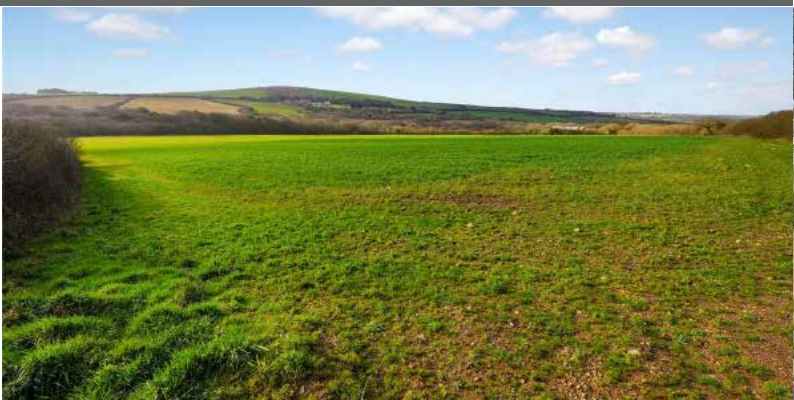


A highly productive run of level arable and pastureland with livestock handling pens extending to just under 46 acres.

Exeter Farms & Land Department  
[simon.alford@kivells.com](mailto:simon.alford@kivells.com) | 01392 252262

## Land at Criftoe Farm

Tregonetha | Guide Price £675,000 - £700,000



Approximately 64.98 acres of quality cropping land and amenity woodland and a useful modern farm building (with potential for alternative uses, subject to planning).

Liskeard Farms & Land Department  
[mark.bunt@kivells.com](mailto:mark.bunt@kivells.com) | 01579 345543

## Land Off Yorke Road

Dartmouth | Guide Price £195,000



Approximately 12.26 acres in two separate field parcels both down to permanent grassland, previously grazed with livestock.

Exeter Farms & Land Department  
[exeter@kivells.com](mailto:exeter@kivells.com) | 01392 252262

## Land at Polskeys Farm

Roche, St. Austell | Guide Price £495,000



Approximately 59.18 acres of pasture and conservation land accessible off a quiet parish road with mains water connected, a useful livestock building and yard.

Liskeard Farms & Land Department  
[mark.bunt@kivells.com](mailto:mark.bunt@kivells.com) | 01579 345543

## Land at Four Beeches Farm

Sourton, Okehampton | Guide Price £224,000



Approximately 26.25 acres of productive pasture land with easy access to the A386. Suitable for amenity, equestrian and traditional farming.

Exeter Farms & Land Department  
[exeter@kivells.com](mailto:exeter@kivells.com) | 01392 252262

## Land & Buildings at Horwood Horwood, Bideford



A fantastic block of just over 166 ½ acres of productive arable land and a useful range of modern agricultural buildings. **Available in two lots.**

- **LOT 1:** Just over 132 acres of arable land with a range of modern and adaptable farm buildings.  
**Guide Price: £1,600,000**
- **LOT 2:** Circa 34 ½ acres of arable land in a single level field.  
**Guide Price: £400,000**

Holsworthy Farms & Land Agency  
[farms@kivells.com](mailto:farms@kivells.com) | 01409 259547

# Land for Auction

## Wednesday 27th May, 7.00pm

Venue: Lifton Strawberry Fields, Lifton, Devon PL16 0DE

# KIVELLS

[www.kivells.com](http://www.kivells.com)

### Penloe Field

Woolley, Bude | Auction Guide Price £65,000 - £75,000  
For sale by public auction - Wednesday 27th May



Approximately 5.59 acres in a quiet rural setting with lovely views and a useful open sided storage building - 27' x 15' (8.23m x 4.57m) with a rain water harvest tank to one side.

Holsworthy Farms & Land Agency  
[Farms@kivells.com](mailto:Farms@kivells.com) | 01409 259547

### Land at Ugworthy

Chilsworthy, Holsworthy | Auction Guide Price £45,000 - £50,000  
For sale by public auction - Wednesday 27th May



Extending to some 5.67 acres, the Land at Ugworthy comprises a mainly level pasture field with natural hedge bank boundaries and a small corrugated sheet clad shed (in poor repair) and an ancient burial ground.

Holsworthy Farms & Land Agency  
[Farms@kivells.com](mailto:Farms@kivells.com) | 01409 259547

### Land at Milton Damarel

Holsworthy | Auction Guide Price £20,000  
For sale by public auction - Wednesday 27th May



This pretty 2.42 acre field comprises a mainly level paddock which benefits from excellent access from the adjoining main road on its northern boundary. The land would be suitable for amenity purposes, keeping livestock or ponies.

Holsworthy Farms & Land Agency  
[Farms@kivells.com](mailto:Farms@kivells.com) | 01409 259547

### Land at Broad Parkham

Parkham, Bidford I | Auction Guide Price £75,000 - £85,000  
For sale by public auction - Wednesday 27th May



Some 8.50 acres benefiting from road frontage and excellent access. The land comprises a very gently sloping pasture field which is enclosed within natural hedge banks.

Holsworthy Farms & Land Agency  
[Farms@kivells.com](mailto:Farms@kivells.com) | 01409 259547

### Land West of Wainhouse Corner

St. Gennys, Bude | Auction Guide Price £140,000 - £150,000  
For sale by public auction - Wednesday 27th May



A useful block of just over 15.5 acres of pasture land, with excellent access from the adjoining main road. The land is very gently sloping and extremely well fenced.

Holsworthy Farms & Land Agency  
[Farms@kivells.com](mailto:Farms@kivells.com) | 01409 259547

### Land at Furzedon Field

Trewidland, Liskeard | Auction Guide Price £110,000 - £115,000  
For sale by public auction - Wednesday 27th May



Approximately 13.80 acres of pasture land in a ring fence block with a woodland stream boundary and fringe and mains water connected to three troughs.

Liskeard Farms & Land Agency  
[mark.bunt@kivells.com](mailto:mark.bunt@kivells.com) | 01579 345543

# Land for Auction

Wednesday 27th May, 7.00pm

Venue: Lifton Strawberry Fields, Lifton, Devon PL16 0DE

# KIVELLS

[www.kivells.com](http://www.kivells.com)

## Land at St Keyne

Liskeard | Auction Guide Price £5,000 - £10,000

For sale by public auction - Wednesday 27th May



Approximately 0.40 acres of woodland and amenity land accessible off a quiet parish road, in a picturesque valley location with a woodland stream running through.

Liskeard Farms & Land Agency

[mark.bunt@kivells.com](mailto:mark.bunt@kivells.com) | 01579 345543

## Land at Kelynack

St. Just, Penzance | Auction Guide Price £130,000

For sale by public auction - Wednesday 27th May



An excellent opportunity to purchase a 13.54 acre block of predominantly level agricultural land in a superb position, just inland from the West Cornish coastline.

Holsworthy Farms & Land Agency

[Farms@kivells.com](mailto:Farms@kivells.com) | 01409 259547

## 2026 Auction Dates

Wednesday 27th May

Wednesday 24th June

Wednesday 29th July

Wednesday 2nd September

Wednesday 7th October

Wednesday 11th November

Thinking of selling by auction? Contact our experienced team today for a **FREE** no obligation auction appraisal.

[www.kivells.com](http://www.kivells.com)

# Previous Auction Results

Wednesday 22nd April, 7.00pm

# KIVELLS

[www.kivells.com](http://www.kivells.com)

## Trefuge Bungalow

Coads Green, Launceston, Cornwall

- For sale by Public Auction on Wednesday 22nd April, 7.00pm at Lifton Strawberry Fields, Lifton, Devon PL16 0DH
- Three bedroom bungalow of non traditional construction and in need of updating
- Set in just over 5 acres of gently sloping pasture
- Useful Nissen hut storage shed
- Lovely quiet rural setting with superb moorland views
- EPC = E (46)

Auction Guide Price: £250,000

**SOLD: £358,000**

Holsworthy Farms & Land Department  
[farms@kivells.com](mailto:farms@kivells.com) | 01409 259547



# Previous Auction Results

Wednesday 22nd April, 7.00pm

# KIVELLS

[www.kivells.com](http://www.kivells.com)

## Land & Yard known as Tall Trees

Kit Hill, Callington | Auction Guide Price £25,000

SOLD: £56,000



A great opportunity to acquire a yard, building and 1¼ acres in need of upgrading. Road frontage and good access.

[Holsworthy Farms & Land Agency](mailto:Farms@kivells.com)  
[Farms@kivells.com](mailto:Farms@kivells.com) | 01409 259547

## Land at Sladelands Farm

Botus Fleming, | Auction Guide Price £130,000 - £140,000

SOLD: £140,000



Approximately 9.95 acres of pasture, amenity and woodland and a range of buildings currently providing a stable yard. The land is accessible off a quiet parish road and has mains electricity and mains water available.

[Liskeard Farms & Land Agency](mailto:mark.bunt@kivells.com)  
[mark.bunt@kivells.com](mailto:mark.bunt@kivells.com) | 01579 345543

## Land lying north of The Pastures

Bratton Clovelly | Auction Guide Price £50,000 - £75,000

SOLD: £68,000



2.11 acres of pasture land, great for livestock grazing or as a pony paddock. Some long term potential, subject to gaining the necessary planning consents.

[Holsworthy Farms & Land Agency](mailto:Farms@kivells.com)  
[Farms@kivells.com](mailto:Farms@kivells.com) | 01409 259547

## Land & Buildings at Klymiarven

Tintage | Auction Guide Price £175,000 - £195,000

SOLD: £275,000



Approximately 13.25 acres of level pasture land with a small range of buildings and yard. The land is situated in a great location in the village, not far from the North Cornish coast.

[Holsworthy Farms & Land Agency](mailto:Farms@kivells.com)  
[Farms@kivells.com](mailto:Farms@kivells.com) | 01409 259547

## Land at Yonder Park

Ebberley, Torrington | Auction Guide Price £295,000 - £315,000

SOLD: £315,000



A fantastic block of approximately 31.42 acres of arable land, divided into four good sized fields and benefiting from good access from the adjoining parish road and far reaching countryside views.

[Holsworthy Farms & Land Agency](mailto:Farms@kivells.com)  
[Farms@kivells.com](mailto:Farms@kivells.com) | 01409 259547

## Land at Lower Wringworthy

Morval, Looe | Auction Guide Price £90,000 - £95,000

SOLD: £95,000



Approximately 10.09 acres comprising two very gently sloping enclosures of permanent pasture accessible off a quiet parish road. The land has previously been used for livestock grazing and forage conservation purposes.

[Liskeard Farms & Land Agency](mailto:mark.bunt@kivells.com)  
[mark.bunt@kivells.com](mailto:mark.bunt@kivells.com) | 01579 345543

# Farms Sale Agreed

# KIVELLS

[www.kivells.com](http://www.kivells.com)

## Keymelford Farm Buildings & Land Keymelford, Colebrook, Crediton, Devon



**Lot 1** - Agricultural buildings and yard area with land surrounding extending to 0.41 acres.  
**Guide Price: £150,000**

**Lot 2** - Agricultural building with concrete pad and land surrounding extending to 0.41 acres.  
**Guide Price: £135,000**

**Lot 3** - A small grassland area extending to approximately 0.14 acres. **Guide Price: £25,000**

**Exeter Farms & Land Agency**  
[exeter@kivells.com](mailto:exeter@kivells.com) | 01392 252262

## Tor Court Farm Torbryan, Newton Abbot



- Four bedroom, Grade II Listed farmhouse
- Stone barns and a modern agricultural building with potential for alternative uses (stp)
- A truly hidden gem located in a peaceful yet accessible location
- Stunning, well-maintained pasture, orchards and woodland
- In all approximately 67.43 acres (27.28 hectares)

**Guide Price: £1,210,000**

**Exeter Farms & Land Department**  
[ian.caunter@kivells.com](mailto:ian.caunter@kivells.com) | 01392 252262

# Farms Sale Agreed

# KIVELLS

[www.kivells.com](http://www.kivells.com)

**Sandenbury**  
Tregadillett, Launceston



- Smallholding in a lovely rural, yet accessible location
- Three bedroom bungalow (AOC) in need of modernising
- Range of pole barns
- Just over 40 acres of pasture land including some woodland
- A fantastic blank canvas
- EPC: D

Guide Price: £650,000

**Holworthy Farms & Land Department**  
[farms@kivells.com](mailto:farms@kivells.com) | 01409 259547

**Sensham Farm**  
Marhamchurch, Bude



- Substantial modern farmhouse and separate first floor flat, both in need of modernisation
- Range of adaptable farm buildings with stabling
- Set in some 57 acres
- Not far from the North Cornish coast
- EPCs: D and F

Guide Price: £1,600,000

**Holworthy Farms & Land Department**  
[farms@kivells.com](mailto:farms@kivells.com) | 01409 259547

# Farms Sale Agreed

# KIVELLS

www.kivells.com

## Trelissick Farm Sithney, Helston



In a beautiful sheltered setting, an 85 acre stock farm. For sale as a whole or in 3 lots.

**LOT 1:** Farmhouse, range of modern livestock and storage buildings, traditional stone barns (some with planning for residential development), set in just over 28 acres of land. EPC: E. **Guide Price: £1,300,000**

**LOT 2:** A super run of gently sloping pasture land extending to some 43½ acres. **Guide Price: £375,000**

**LOT 3:** Just over 14 acres and a former waterworks building with planning in principal for a dwelling. **Guide Price: £290,000**

Holsworthy Farms & Land Department  
farms@kivells.com | 01409 259547

## East Coombe Farm St. Pinnock, Liskeard



- Three bedroom, two bathroom, three reception room character detached house
- Splendid private location, with far reaching rural views
- Outbuildings with significant potential for alternative uses
- Located in rural East Cornwall between the wide expanses of Bodmin Moor and the South Cornish coastline
- In all 45.50 acres of land and woodland
- EPC: E & D

**Guide Price: £900,000**

Liskeard Farms & Land Department  
liskeard@kivells.com | 01579 345543

# Land Sale Agreed

# KIVELLS

www.kivells.com

## Land off Blackacre Lane St Columb | Guide Price £150,000 - £155,000



Approx 12.87 acres comprising a single enclosure of gently sloping land currently in a temporary ley. In recent years has been used for arable and vegetable growing purposes.  
Liskeard Farms & Land Agency  
mark.bunt@kivells.com | 01579 345543

## Land at Viverdon Down St. Mellion, Saltash | Guide Price £465,000



Just under 45 acres of productive pasture land in a very accessible location with lovely far reaching views.  
Holsworthy Farms & Land Agency  
farms@kivells.com | 01409 259547

## Land forming Part Oldsbrim Lot 1 Poundsgate, Newton Abbot | Guide Price £150,000



Approximately 26.19 acres incorporating a block of permanent grassland together with areas of rough grazing.  
Exeter Farms & Land Department  
ian.caunter@kivells.com | 01392 252262

## Land forming Part Oldsbrim Lot 2 Poundsgate, Newton Abbot | Guide Price £75,000



Approximately 12.62 acres incorporating three immaculate field parcels down to permanent pasture.  
Exeter Farms & Land Department  
ian.caunter@kivells.com | 01392 252262

## Land at Upton Farm Lot 1 Delabole | Guide Price £500,000



Approx. 39.59 acres comprising a ring fence block of level or very gently sloping land currently in arable and temporary pastures contained in large, easy working, enclosures.  
Liskeard Farms & Land Department  
mark.bunt@kivells.com | 01579 345543

## Land at Upton Farm Lot 2 Delabole | Guide Price £1,050,000



Approx. 88.25 acres comprising a block of level or very gently sloping land currently in arable and temporary pastures.  
Liskeard Farms & Land Department  
mark.bunt@kivells.com | 01579 345543

# Land Sale Agreed

# KIVELLS

www.kivells.com

## Land at Chudleighs Barn Holding Liskeard | Guide Price £100,000 - £125,000



Approximately 20.19 acres of pasture and amenity land with pretty stream frontage and some woodland included.  
Liskeard Farms & Land Department  
mark.bunt@kivells.com | 01579 345543

## Land at Huxhill Weare Giffard, Bideford | Guide Price £550,000



A productive run of good quality arable and pasture land in a favoured location extending to approximately 49.38 acres.  
Exeter Farms & Land Department  
ben.hancock@kivells.com | 07760 887581

## Tregovenek Bungalow, Attwood Lane, Pensilva, Liskeard, Cornwall PL14 5QU

Kivells have been instructed to market Tregovenek, a detached three/four bedroom bungalow in a quiet rural location, close to the village of Bolventor, with good size outside space. The bungalow is subject to an Agricultural Occupancy Condition.

Enquiries to W M Bunt BSc MRICS FAAV, Kivells, 7-8 Bay Tree Hill, Liskeard, Cornwall PL14 4BE

Tel: 01579 345543 or 07879 640970. Email: mark.bunt@kivells.com.