



EXETER LIVESTOCK CENTRE

MARKET REPORT MAY 2026

Monday 11th May – Prime Stock Market



MyFarmWorks

Brought to you by

Shearwell
Data

Livestock Systems

DEMO EVENT

Join us at our
MyFarmWorks
Demo Event –
we'd love to see
you there!



Meet your local rep
Hollie Govier

Exeter Livestock Centre

Friday 29th May | 10am-1pm
Matford Park Road, Exeter, Devon, EX2 8FD

Monday 11th May

28 PRIME CATTLE AND CULL COWS – 10:45 AM

Auctioneer: Simon Alford – 07789 980203

Prime Cattle to £2514 & 384ppk – Cull Cows & Bulls to £1765 & 264ppk

Monday saw prime cattle reach a top per kilo of 384 pence given for a sublime British Blonde heifer from Adrian and Bradley Bowden of Drewsteignton which at 626kg levelled out at £2400 with other heifers of note drawing £1977 (574kg x 345ppk) for a strong looking British Blue from David Slade of Chagford. Also, trim dairy bred heifers ran to £1827 (558kg x 328ppk) for Dave Parris and Family in from Upottery followed by neat mediumweight beef bred Angus steers from H & M Retallick of Ilington at £1850 (542kg x 342ppk). Several decent heavyweight prime steers on offer this week with well-fed British Blues running to £2514 (754kg x 334ppk) for Keith and Hilary Harvey of Bovey Tracey whilst other Blue steers came back at £2183 (632kg x 346ppk) for David Slade. A pair of cracking British Blonde bullocks from Adrian and Bradley Bowden returned £2365 (630kg x 376ppk) and £2329 (622kg x 375ppk). Overage (34m) Hereford heifers sold readily and to £2040 (730kg x 280ppk) for a Hereford heifer from WR & AR Bater of Chittlehamholt whilst a Hereford cull cow off the same farm sold for £1765 (756kg x 234ppk). Also, a well-covered Aberdeen Angus cow from IC & L Salisbury of Chulmleigh reached for £1611 (662kg x 244ppk).

Demand is strong for cull cows and prime cattle for Monday's Primestock Market – either tested or untested. Please phone the market office on 01392 251261 or Robert Armstrong on 07791 484290.

4552 SHEEP – 09.30 AM

Auctioneer: Russell Steer 07788 318701

**Spring Lambs to £220 & 526ppk
Mature Sheep to £200 & 368ppk**

**Prime Hogs to £246 & 433ppk
Cull Ewes to £330 & Rams to £318**

“Another good Monday with a few less lambs meeting a massive trade and averaging 450ppk and £195.50 per head with an SQQ of 462ppk. Hogs and toothers sharper too with top calls of £246 in the hogs and £220 with toothers as the 450 overweight hogs average £201. And to top it all the mixy show of 1443 cull sheep were a touch firmer trade selling to a top of £330 in the ewes and £318 in the tups with all culls averaging £171.37”

1808 PRIME SPRING LAMBS

An extremely fast lamb trade, looking entirely export driven with the 38-43kg well bred, fresh looking lambs selling at extreme rates all morning with the 40-43's regularly over £200 selling to a top per kilo of 526 given for plummy 39kg sorts from Robin Irwin of Kings Nympton realising £205. More 39's at 513ppk (£200) for Baker Bros of Highampton as Tom & Leh Cole of Heasley Mill sold their even pens of 39's at £199 & £195 (510 & 500ppk) as well as top price 40's at £201.50 and £200 with 103 smart Texel x lambs from this great home averaging 40.5kgs and £199.70 per head, well done to them. CA Churchill of Axminster also sold 40kgs at £200 as 41's also reached £5 with Robin Irwins equating to £205 and a large pen of smarties from Calhayes Farm Partnership made £204.50 and 499ppk.

Top in the lump going to Andy & Wendy Reed of Blackborough with an overweight Suffolk at £220 followed by Derek Arnold of Morchard Road with 54's at £212 and both Dave & Michelle Wotton of Ashreigney and Michael Down of Payhembury achieving £210. Plenty of heavies over £200 too with Ben & Sarah Tuck of Honiton selling 51kgs at £209, Steve & Sandra Prettejohn with 52's at £208, Tom & Leh Cole with 51's at £207 and smart 47's rising to £206 for both CB Allen of Virginstowe and Robin Irwin. A tremendous pair of 45kg Roussin sired lambs from David Pratt and Family of Huntsham flew to £211 and a shapely pen of 43's from CA Churchill climbed to £208.50.

“Tremendous, tremendous, tremendous!!

More needed each week please! A crowd of 12 buyers representing more than 16 national firms all active in Exeter every Monday.”

**** VAN or Farm Assurance NOW A MUST FOR ALL SPRING LAMB PRODUCERS please with all major firms requiring one or the other. Without it you are severely disadvantaged!****

1095 PRIME HOGGS & 205 MATURE SHEEP

1300 old season were a firm trade too that just went dearer and dearer as the day went on, with as mentioned the overweights averaging £201. Top money to Ed Venning of Fowey with a single 72kg Suffolk at £246 as Martin & Adam Crabb of Luppitt saw tops of £221, £220 to see all 53 of theirs average £210, Geoff & Sally Tripp of East Prawle also averaged £210 with their consignment of 87 cracking hogs that peaked at £216 twice and £215 three times and Richard Dare and Family claimed a top of £210 and averaged £203 of his 71 smart hogs. In the heavies Martin and Adam Crabb sold tremendous black 52kg shapely hogs that flew to £215 as Phillip Hopkins of Honiton sold 52's to £202.50 and three vendors sold that weight hogs at £199. 49's to £197 for Rich Northey of Liskeard and 48's to £196 for West Middlewick Farm of Nomansland as a double pen of 47's peaked at £194 again for Rich Northey. Handy weight hogs to 433ppk being 43's at £186 again for David Pratt and Family as Graham Doige of Modbury had 45's at £189 and 420ppk as 44's reached £184 for Robert & Christine Steer and 42's to £175 for Josh Northover of Bridport. Graham Doidge topping the lighter hogs too with 39's at 409 and £159.50 as Robert & Christine Steer had the same weight at £158. Hogg SQQ seems insignificant at 392ppk given the mixed quality on offer with an average per head of £184.

Some great runs of mature sheep as these appear to be worth pounds more sold on their feet. Eight pens over £200 to a top of £220 for Dave & Michelle Wooton as both Phil Hopkins and Geoff & Sally Tripp claimed £210 and both Ed Venning and Messrs Reddaway Ltd of Honeychurch made £202. Best per kilo being Geoff & Sally Tripps at 368ppk, 57kgs at £210.

PRIME LAMBS					
Weight	No.	Top £'s	Top ppk	Av. £'s	Av. ppk
32-39	155	205.00 (+16.00)	526 (+23)	178.47 (+5.53)	472 (+11)
40-45	1299	211.00 (+10.00)	504 (+6)	196.24 (+4.71)	461 (+6)
46-52	315	209.00 (+4.00)	439 (+4)	199.49 (+4.56)	416 (+5)
53+	39	220.00 (+15.00)	393 (+12)	202.63 (+7.47)	370 (+15)
PRIME HOGGS					
17-39	95	159.50 (-3.50)	409 (-9)	133.89 (-4.68)	355 (-11)
40-45	236	189.00 (+1.50)	433 (-3)	169.92 (-1.27)	398 (+2)
46-52	314	215.00 (+14.00)	413 (+4)	189.86 (+9.75)	391 (+18)
53+	451	246.00 (+6.00)	394 (+16)	200.78 (+9.77)	341 (+9)
MATURE SHEEP	205	220.00 (+20.00)	368 (+17)	161.45 (+10.25)	290 (-1)
		Top		Average	
EWES	1392	£330 (+45)		£171.24 (+1.12)	
RAMS	51	£318 (+48)		£174.73 (-10.04)	




- Competitively priced farm medicines
- Dairy and beef fertility clubs

- 24/7/365 veterinary cover
- Livestock fertility testing and advice

- VetTech services
- In-house labs and lambing bays

www.penbodevets.co.uk

Holsworthy | Bradworthy | Stratton | Launceston | Camelford

1392 CULL EWES & 51 RAMS

A good number of 1443 cull sheep were mainly a solid entry of grazed, scanned empty or recently weaned ewes, however there would also be a fair percentage of smaller hill ewes, many of which would be plainer sorts which hampered our averaged to £171 which is just similar on the week with some ewes actually £20 sharper. Best ewes still in short supply however Paul Quick and Family of Crediton sold a few good 'uns with a top of £330 for a single Texel and others at £260 & £250. Mark & Alice Blakeney of Mere, Wiltshire sold a pair of nice Texel's at £280 and more of the same at £268 for John Walter-Symons of Holbeton and £250 for Jack Enticott and Family of Wellington. Charollais ewes in large pens selling at £270 & £250 for Mick May of Coplestone and more of this breed at £258 for Reddaway Ltd of Honeychurch as Beltex ewes reached £268 for Ross May and Family of Netherexe and £250 for Heidi Rose of Sidmouth. Suffolk cross Mules to £228 for Graham Perkins and Family of Coryton with plenty of business done between £200 and £220. Mules a touch sharper too with the bigger and better end £180's with plenty in the £160's and £170's. Hill ewes seeing several pens of good meat ewes £130-£140 to a top of £150 for Scotch ewes from the Cole Family of Tavistock with leaner, plainer and smaller sorts either side of £100.

Tups a good go again this week with Julian Bowen of Lifton selling his well at £318 & £310 followed by Ellen Willis of Christow at £260 and Russell Stevens of Crediton had a pair of Texels at £252.



FARM MACHINERY PROPERTY MARKING EVENT/DEMONSTRATION

Date: Friday 1st May 2026

Venue: MATFORD LIVESTOCK MARKET

Time: 0900hrs-Midday.

Come and meet Devon and Cornwall Police Rural Affairs Team, discuss crime prevention/security measures and forensic property marking opportunities. We look forward to seeing you all.



***Other products are available via the SBD website - Police Preferred Specification on all crime prevention practices*

FORTHCOMING SALES

MONDAY 11TH MAY – EXETER LIVESTOCK CENTRE

Weekly Prime Stock Market

TUESDAY 12TH MAY – EXETER LIVESTOCK CENTRE

Sale of Dairy Cattle

FRIDAY 15TH MAY – EXETER LIVESTOCK CENTRE

Weekly Store Market

MONDAY 18TH MAY – EXETER LIVESTOCK CENTRE

Weekly Prime Stock Market

FRIDAY 22ND MAY – EXETER LIVESTOCK CENTRE

Weekly Store Market to include Fortnightly Pig Sale

MONDAY 25TH MAY – EXETER LIVESTOCK CENTRE

Weekly Prime Stock Market

TUESDAY 26TH MAY – EXETER LIVESTOCK CENTRE

Monthly Sale of TB Restricted (Orange Market) Cattle

FRIDAY 29TH MAY – EXETER LIVESTOCK CENTRE

Weekly Store Market to include Monthly Sale of Organic Cattle & Sheep, Monthly Catalogued Sale of Beef Breeding Stock including the Show and Sale of Cattle for the South Devon Breeders Club plus Sale of Dairy Cattle plus Catalogued Sale of Hogg Couples plus Fortnightly Pig Sale (please note change of date for this sale).

MONDAY 1ST JUNE – EXETER LIVESTOCK CENTRE

Weekly Prime Stock Market

FRIDAY 5TH JUNE – EXETER LIVESTOCK CENTRE

Weekly Store Market to include Fortnightly Pig Sale

MONDAY 8TH JUNE – EXETER LIVESTOCK CENTRE

Weekly Prime Stock Market

FRIDAY 12TH JUNE – EXETER LIVESTOCK CENTRE

Weekly Store Market to include Sale of Dairy Cattle plus 38th Annual June Sale of Early Breeding Ewes & Rams including Show & Sale of Dorset X Breeding Ewes.

MONDAY 15TH JUNE – EXETER LIVESTOCK CENTRE

Weekly Prime Stock Market

FRIDAY 19TH JUNE – EXETER LIVESTOCK CENTRE

Weekly Store Market to include 1st Weekly Sale of Store Lambs, Monthly Catalogued Sale of Beef Breeding Stock, Fortnightly Pig Sale and Collective Standing Straw Sale.

MONDAY 22ND JUNE – EXETER LIVESTOCK CENTRE

Weekly Prime Stock Market

FRIDAY 26TH JUNE – EXETER LIVESTOCK CENTRE

Weekly Store Market to include Monthly Sale of Organic Cattle and Sheep, Sale of Dairy Cattle

Farms | Land | Smallholdings

Thinking of selling?

Kivells are at the heart of the farming community throughout the westcountry and beyond and have been selling farms, land and smallholdings since 1885.



Our tailor made service includes;

- ✓ Personal and confidential service
- ✓ Experienced team of Farm Agents
- ✓ Tailor made marketing plans across a variety of platforms
- ✓ Network of contacts within the farming community
- ✓ Added value with advice on Tax, Planning and Stewardship



In-house
bespoke
brochures



Over 40,000
followers on
Social Media



Millions of
page views on
kivells.com,
Rightmove
& Zoopa



Coverage in
national and
regional
publications

With 140 years of industry experience, we pride ourselves in providing friendly and professional advice on all aspects of selling your farm, land or smallholding.

Farms For Sale

KIVELLS

www.kivells.com

Vennbrook Varley Farm, PRIXFORD, Barnstaple

- 100 acre residential and stock farm
- Attractive, well proportioned bungalow (AOC)
- Useful range of livestock and storage buildings
- Ring fenced pasture land
- Superb views
- EPC C [77]

Guide Price: £1,800,000

Holworthy Farms & Land Department
farms@kivells.com | 01409 259547



Rolstone Bungalow Morchard Bishop, Crediton

- A wonderfully presented and immaculate four bedroom Bungalow, subject to an Agricultural Occupancy Condition (AOC)
- Adjacent Workshop and Office Unit
- A useful Agricultural Building
- Well maintained productive Pasture Land
- In all totalling approximately 10.74 acres (4.34 hectares)
- EPC: C

Guide Price: £925,000

Exeter Farms & Land Department
exeter@kivells.com | 01392 252262



Farms For Sale

KIVELLS

www.kivells.com

Little Clamoak Farm Bere Ferrers, Yelverton

- A highly private and well located residential farm 4 bedroom dwelling, subject to AOC
- Adaptable range of farm buildings
- Productive run of land extending to just over 26 acres in all
- Sought after location on the Bere Peninsula overlooking the River Tamar
- Freehold with vacant possession available
- EPC: F

Guide Price: £725,000

Exeter Farms & Land Department
exeter@kivells.com | 01392 252262



Farms For Sale

KIVELLS

www.kivells.com

Holdstrong Farmhouse Coryton, Okehampton

- A delightful 5 bedroom 17th Century Devon Longhouse
- Situated in a beautiful rural setting on the edge of the Dartmoor National Park
- Superb views
- Stabling and further outbuildings
- Pond
- Coppice
- In all about 15.87 acres
- Freehold with vacant possession available
- EPC: E

Guide Price: £850,000

Exeter Farms & Land Department
exeter@kivells.com | 01392 252262



Farms For Sale

KIVELLS

www.kivells.com

Puddaven Farm North Bovey, Newton Abbot

- Immaculate Farmhouse
- Stunning two bedroom Holiday Cottage
- Outbuildings and stabling
- Outdoor equine menage
- Well-maintained pasture land
- Versatile lifestyle property
- Far reaching views
- In all totalling approximately 32.35 acres (13.09 hectares)
- EPC: E & D

Guide Price: £1,695,000

Exeter Farms & Land Department
exeter@kivells.com | 01392 252262



Farms For Sale

KIVELLS

www.kivells.com

Oxenpark Farm Hersham, Bude

- Wonderful setting with far reaching views over Bude Bay and the North Cornish coast.
- Three bedroom farmhouse and four further cottages
- Superb range of outbuildings suitable for a variety of uses
- In all about 16.18 acres with further land available by separate negotiation.
- Freehold
- Available as a whole or in three lots
- EPC: D, C, C, C & D

Lot 1: Three bedroom farmhouse, two holiday cottages, one further cottage and a lodge. Range of adaptable farm buildings, income generating wind turbine and just over 16 acres.
Guide Price: £1,395,000

Lot 2: A useful block of 45½ acres of pasture and arable land including 3 acres of mature woodland.
Guide Price: £515,000

Lot 3: A single gently sloping pasture field extending to 6.34 acres.
Guide Price: £85,000

Guide Price (as a whole): £1,995,000

Holsworthy Farms & Land Department
farms@kivells.com | 01409 259547



Farms For Sale

KIVELLS

www.kivells.com

Trehere Farm Trewidland, Liskeard

- Substantial four bedroom (all en-suite) modern house enjoying extensive country views
- Range of buildings currently comprising a livery yard with potential for alternative uses
- Approximately 36.51 acres of pasture, amenity woodland and a sand school
- Wonderful rural location yet conveniently situated close to several villages and the town of Liskeard
- EPC: D

Guide Price: £995,000

Liskeard Farms & Land Department
mark.bunt@kivells.com | 01579 345543



Farms For Sale

KIVELLS

www.kivells.com

Barton Moor Meshaw, South Molton, Devon

- Three bedroom detached bungalow (AOC)
- Range of modern farm buildings with Class Q Permission for five dwellings
- Desirable and accessible location
- Freehold with vacant possession available
- In all about 4.22 acres
- EPC: 23 Band F

Guide Price: £495,000

Exeter Farms & Land Department
ben.hancock@kivells.com | 01392 252262



Farms For Sale

KIVELLS

www.kivells.com

Landabethick Blisland, Bodmin

- Charming, 6 bedroom detached farmhouse
- Excellent range of traditional farm buildings suitable for a variety of uses
- In all about 77 acres comprising a combination of good agricultural land and woodland
- Parking, garaging and workshop space
- Unrivalled, private position at the end of a private drive
- Freehold with vacant possession available
- EPC: D

Guide Price: £1,350,000

Exeter Farms & Land Department
ben.hancock@kivells.com | 01392 252262



Farms For Sale

KIVELLS

www.kivells.com

Great Huish Farm Tedburn St. Mary Exeter

- Grade II Listed detached four bedroom house with three reception rooms
- Two further cottages providing income generation or multi-generation living
- Ring Fenced Farm
- Range of modern and traditional farm buildings
- Development opportunities with some planning consent in place
- Easy access to the A30 & M5
- In all about 8.92 acres of agricultural land with further land available by separate negotiation.
- EPC: C

Guide Price: £1,395,000

Exeter Farms & Land Department
exeter@kivells.com | 01392 252262



Farms For Sale

KIVELLS

www.kivells.com

West Burrow Farm Bratton Clovelly, Okehampton

A quietly set rural small holding offering huge potential.

- Grade II* Listed thatched farmhouse in need of modernisation.
- 3 beds, 2 receptions.
- Two adjoining traditional barns.
- Land and woodland
- EPC: Exempt as a listed property

Guide Price: £645,000

Holsworthy Farms & Land Department
farms@kivells.com | 01409 259547



Farms For Sale

KIVELLS

www.kivells.com

Fern Hill Farm Mount, Bodmin

- Farm with significant development potential
- Range of agricultural and equestrian buildings
- 60.29 acres of land including productive pasture
- Two bedroom lodge
- Planning for farm dwelling and residential caravan
- Located in a super rural location with far reaching valley views
- Freehold with vacant possession upon completion

Guide Price: £1,000,000

Liskeard Farms & Land Department
mark.bunt@kivells.com | 01579 345543



Development Site For Sale

KIVELLS

www.kivells.com

Development Site at Lower Newton Farm Zeal Monachorum, Crediton, Devon

- Valuable residential development opportunity
- Range of agricultural buildings with planning permission for demolition and creation of three new build, detached four and three bedroom dwellings
- Potential under extension of Permitted Development Rights for retention and conversion of the existing buildings (Clarkson's Law - Maximum 10 dwellings), subject to planning
- Additional land available

Guide Price: £450,000

Exeter Farms & Land Department
simon.alford@kivells.com | 01392 252262



Aerial view looking north west

Land For Sale

KIVELLS

www.kivells.com

Land At Trevillies

St. Keyne, Liskeard | Guide Price £375,000 -



Approximately 45.64 acres of productive arable/pasture land and amenity woodland with mains water connected. Freehold with vacant possession upon completion.

Liskeard Farms & Land Department
mark.bunt@kivells.com | 01579 345543

Land at Stoke Canon

Exeter, Devon | Offers in Excess of £375,000

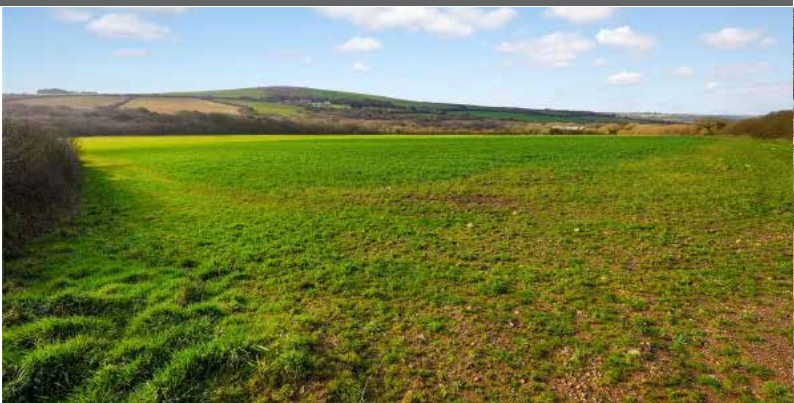


A highly productive run of level arable and pastureland with livestock handling pens extending to just under 46 acres.

Exeter Farms & Land Department
simon.alford@kivells.com | 01392 252262

Land at Criftoe Farm

Tregonetha | Guide Price £675,000 - £700,000



Approximately 64.98 acres of quality cropping land and amenity woodland and a useful modern farm building (with potential for alternative uses, subject to planning).

Liskeard Farms & Land Department
mark.bunt@kivells.com | 01579 345543

Land Off Yorke Road

Dartmouth | Guide Price £195,000



Approximately 12.26 acres in two separate field parcels both down to permanent grassland, previously grazed with livestock.

Exeter Farms & Land Department
exeter@kivells.com | 01392 252262

Land at Polskeys Farm

Roche, St. Austell | Guide Price £495,000



Approximately 59.18 acres of pasture and conservation land accessible off a quiet parish road with mains water connected, a useful livestock building and yard.

Liskeard Farms & Land Department
mark.bunt@kivells.com | 01579 345543

Land at Four Beeches Farm

Sourton, Okehampton | Guide Price £224,000



Approximately 26.25 acres of productive pasture land with easy access to the A386. Suitable for amenity, equestrian and traditional farming.

Exeter Farms & Land Department
exeter@kivells.com | 01392 252262

Land at Higher Reedy Mill

Trewidland, Liskeard | Guide Price £50,000



Approximately 4.39 acres of pasture land, accessible off a quiet parish road close to the village of Trewidland in a quiet rural location with far reaching views.

Liskeard Farms & Land Department
mark.bunt@kivells.com | 01579 345543

Land & Buildings at Horwood

Horwood, Bideford



A fantastic block of just over 166 ½ acres of productive arable land and a useful range of modern agricultural buildings. **Available in two lots.**

- **LOT 1:** Just over 132 acres of arable land with a range of modern and adaptable farm buildings.
Guide Price: £1,600,000
- **LOT 2:** Circa 34 ½ acres of arable land in a single level field.
Guide Price: £400,000

Holsworthy Farms & Land Agency
farms@kivells.com | 01409 259547

GRASS KEEP FOR SALE BY INFORMAL TENDER Rosedown Farm, Hartland, Devon EX39 6AH



Approximately 78.41 acres available in one lot, to cut and/or graze with sheep. Available 1st June 2026 to 31st October 2026. Tenders to be submitted by 12 noon on Wednesday 20th May 2026.

Toby Theobald
toby.theobald@kivells.com | 01409 253275

GRASS KEEP FOR SALE BY INFORMAL TENDER Land known as the Prairie Land, North of Tor Down, Exbourne EX20 3QU



58.95 acres available in one lot for cutting and/or grazing purposes. Available from 1st June 2026 to 31st October 2026, Tenders to be submitted by 12 noon on Tuesday 19th May 2026.

Toby Theobald
toby.theobald@kivells.com | 01409 253275

GENERAL PURPOSE BUILDING TO LET Stourscombe, Launceston | £595 pcm



A new 45' x 30' shed at Stourscombe near Launceston, with great access to A30/A388. Ideal for storage.

Thomas Rattray
thomas.rattray@kivells.com | 07813 016804

Land for Auction

Wednesday 27th May, 7.00pm

Venue: Lifton Strawberry Fields, Lifton, Devon PL16 0DE

KIVELLS

www.kivells.com

Penloe Field

Woolley, Bude | Auction Guide Price £65,000 - £75,000
For sale by public auction - Wednesday 27th May



Approximately 5.59 acres in a quiet rural setting with lovely views and a useful open sided storage building - 27' x 15' (8.23m x 4.57m) with a rain water harvest tank to one side.

Holsworthy Farms & Land Agency
Farms@kivells.com | 01409 259547

Land at Ugworthy

Chilsworthy, Holsworthy | Auction Guide Price £45,000 - £50,000
For sale by public auction - Wednesday 27th May



Extending to some 5.67 acres, the Land at Ugworthy comprises a mainly level pasture field with natural hedge bank boundaries and a small corrugated sheet clad shed (in poor repair) and an ancient burial ground.

Holsworthy Farms & Land Agency
Farms@kivells.com | 01409 259547

Land at Milton Damarel

Holsworthy | Auction Guide Price £20,000
For sale by public auction - Wednesday 27th May



This pretty 2.42 acre field comprises a mainly level paddock which benefits from excellent access from the adjoining main road on its northern boundary. The land would be suitable for amenity purposes, keeping livestock or ponies.

Holsworthy Farms & Land Agency
Farms@kivells.com | 01409 259547

Land at Broad Parkham

Parkham, Bidford I | Auction Guide Price £75,000 - £85,000
For sale by public auction - Wednesday 27th May



Some 8.50 acres benefiting from road frontage and excellent access. The land comprises a very gently sloping pasture field which is enclosed within natural hedge banks.

Holsworthy Farms & Land Agency
Farms@kivells.com | 01409 259547

Land West of Wainhouse Corner

St. Gennys, Bude | Auction Guide Price £140,000 - £150,000
For sale by public auction - Wednesday 27th May



A useful block of just over 15.5 acres of pasture land, with excellent access from the adjoining main road. The land is very gently sloping and extremely well fenced.

Holsworthy Farms & Land Agency
Farms@kivells.com | 01409 259547

Land at Furzedon Field

Trewidland, Liskeard | Auction Guide Price £110,000 - £115,000
For sale by public auction - Wednesday 27th May



Approximately 13.80 acres of pasture land in a ring fence block with a woodland stream boundary and fringe and mains water connected to three troughs.

Liskeard Farms & Land Agency
mark.bunt@kivells.com | 01579 345543

Land for Auction

Wednesday 27th May, 7.00pm

Venue: Lifton Strawberry Fields, Lifton, Devon PL16 0DE

KIVELLS

www.kivells.com

Land at St Keyne

Liskeard | Auction Guide Price £5,000 - £10,000

For sale by public auction - Wednesday 27th May



Approximately 0.40 acres of woodland and amenity land accessible off a quiet parish road, in a picturesque valley location with a woodland stream running through.

Liskeard Farms & Land Agency

mark.bunt@kivells.com | 01579 345543

Land at Kelynack

St. Just, Penzance | Auction Guide Price £130,000

For sale by public auction - Wednesday 27th May



An excellent opportunity to purchase a 13.54 acre block of predominantly level agricultural land in a superb position, just inland from the West Cornish coastline.

Holsworthy Farms & Land Agency

Farms@kivells.com | 01409 259547

2026 Auction Dates

Wednesday 27th May

Wednesday 24th June

Wednesday 29th July

Wednesday 2nd September

Wednesday 7th October

Wednesday 11th November

Thinking of selling by auction? Contact our experienced team today for a **FREE** no obligation auction appraisal.

www.kivells.com

Previous Auction Results

Wednesday 22nd April, 7.00pm

KIVELLS

www.kivells.com

Trefuge Bungalow Coads Green, Launceston, Cornwall

- For sale by Public Auction on Wednesday 22nd April, 7.00pm at Lifton Strawberry Fields, Lifton, Devon PL16 0DH
- Three bedroom bungalow of non traditional construction and in need of updating
- Set in just over 5 acres of gently sloping pasture
- Useful Nissen hut storage shed
- Lovely quiet rural setting with superb moorland views
- EPC = E (46)

Auction Guide Price: £250,000
SOLD: £358,000

Holsworthy Farms & Land Department
farms@kivells.com | 01409 259547



Previous Auction Results

Wednesday 22nd April, 7.00pm

KIVELLS

www.kivells.com

Land & Yard known as Tall Trees

Kit Hill, Callington | Auction Guide Price £25,000

SOLD: £56,000



A great opportunity to acquire a yard, building and 1¼ acres in need of upgrading. Road frontage and good access.

[Holsworthy Farms & Land Agency](mailto:Farms@kivells.com)
Farms@kivells.com | 01409 259547

Land at Sladelands Farm

Botus Fleming, | Auction Guide Price £130,000 - £140,000

SOLD: £140,000



Approximately 9.95 acres of pasture, amenity and woodland and a range of buildings currently providing a stable yard. The land is accessible off a quiet parish road and has mains electricity and mains water available.

[Liskeard Farms & Land Agency](mailto:mark.bunt@kivells.com)
mark.bunt@kivells.com | 01579 345543

Land lying north of The Pastures

Bratton Clovelly | Auction Guide Price £50,000 - £75,000

SOLD: £68,000



2.11 acres of pasture land, great for livestock grazing or as a pony paddock. Some long term potential, subject to gaining the necessary planning consents.

[Holsworthy Farms & Land Agency](mailto:Farms@kivells.com)
Farms@kivells.com | 01409 259547

Land & Buildings at Klymiarven

Tintage | Auction Guide Price £175,000 - £195,000

SOLD: £275,000



Approximately 13.25 acres of level pasture land with a small range of buildings and yard. The land is situated in a great location in the village, not far from the North Cornish coast.

[Holsworthy Farms & Land Agency](mailto:Farms@kivells.com)
Farms@kivells.com | 01409 259547

Land at Yonder Park

Ebberley, Torrington | Auction Guide Price £295,000 - £315,000

SOLD: £315,000



A fantastic block of approximately 31.42 acres of arable land, divided in to four good sized fields and benefiting from good access from the adjoining parish road and far reaching countryside views.

[Holsworthy Farms & Land Agency](mailto:Farms@kivells.com)
Farms@kivells.com | 01409 259547

Land at Lower Wringworthy

Morval, Looe | Auction Guide Price £90,000 - £95,000

SOLD: £95,000



Approximately 10.09 acres comprising two very gently sloping enclosures of permanent pasture accessible off a quiet parish road. The land has previously been used for livestock grazing and forage conservation purposes.

[Liskeard Farms & Land Agency](mailto:mark.bunt@kivells.com)
mark.bunt@kivells.com | 01579 345543

Farms Sale Agreed

KIVELLS

www.kivells.com

Keymelford Farm Buildings & Land Keymelford, Colebrook, Crediton, Devon



Lot 1 - Agricultural buildings and yard area with land surrounding extending to 0.41 acres.
Guide Price: £150,000

Lot 2 - Agricultural building with concrete pad and land surrounding extending to 0.41 acres.
Guide Price: £135,000

Lot 3 - A small grassland area extending to approximately 0.14 acres. **Guide Price: £25,000**

Exeter Farms & Land Agency
exeter@kivells.com | 01392 252262

Tor Court Farm Torbryan, Newton Abbot



- Four bedroom, Grade II Listed farmhouse
- Stone barns and a modern agricultural building with potential for alternative uses (stp)
- A truly hidden gem located in a peaceful yet accessible location
- Stunning, well-maintained pasture, orchards and woodland
- In all approximately 67.43 acres (27.28 hectares)

Guide Price: £1,210,000

Exeter Farms & Land Department
ian.caunter@kivells.com | 01392 252262

Farms Sale Agreed

KIVELLS

www.kivells.com

Sandenbury
Tregadillett, Launceston



- Smallholding in a lovely rural, yet accessible location
- Three bedroom bungalow (AOC) in need of modernising
- Range of pole barns
- Just over 40 acres of pasture land including some woodland
- A fantastic blank canvas
- EPC: D

Guide Price: £650,000

Holworthy Farms & Land Department
farms@kivells.com | 01409 259547

Sensham Farm
Marhamchurch, Bude



- Substantial modern farmhouse and separate first floor flat, both in need of modernisation
- Range of adaptable farm buildings with stabling
- Set in some 57 acres
- Not far from the North Cornish coast
- EPCs: D and F

Guide Price: £1,600,000

Holworthy Farms & Land Department
farms@kivells.com | 01409 259547

Farms Sale Agreed

KIVELLS

www.kivells.com

Trelissick Farm Sithney, Helston



In a beautiful sheltered setting, an 85 acre stock farm. For sale as a whole or in 3 lots.

LOT 1: Farmhouse, range of modern livestock and storage buildings, traditional stone barns (some with planning for residential development), set in just over 28 acres of land. EPC: E. **Guide Price: £1,300,000**

LOT 2: A super run of gently sloping pasture land extending to some 43½ acres. **Guide Price: £375,000**

LOT 3: Just over 14 acres and a former waterworks building with planning in principal for a dwelling. Guide Price: **£290,000**

Holsworthy Farms & Land Department
farms@kivells.com | 01409 259547

East Coombe Farm St. Pinnock, Liskeard



- Three bedroom, two bathroom, three reception room character detached house
- Splendid private location, with far reaching rural views
- Outbuildings with significant potential for alternative uses
- Located in rural East Cornwall between the wide expanses of Bodmin Moor and the South Cornish coastline
- In all 45.50 acres of land and woodland
- EPC: E & D

Guide Price: £900,000

Liskeard Farms & Land Department
liskeard@kivells.com | 01579 345543

Land Sale Agreed

KIVELLS

www.kivells.com

Land off Blackacre Lane St Columb | Guide Price £150,000 - £155,000



Approx 12.87 acres comprising a single enclosure of gently sloping land currently in a temporary ley. In recent years has been used for arable and vegetable growing purposes.
Liskeard Farms & Land Agency
mark.bunt@kivells.com | 01579 345543

Land at Viverdon Down St. Mellion, Saltash | Guide Price £465,000



Just under 45 acres of productive pasture land in a very accessible location with lovely far reaching views.
Holsworthy Farms & Land Agency
farms@kivells.com | 01409 259547

Land forming Part Oldsbrim Lot 1 Poundsgate, Newton Abbot | Guide Price £150,000



Approximately 26.19 acres incorporating a block of permanent grassland together with areas of rough grazing.
Exeter Farms & Land Department
ian.caunter@kivells.com | 01392 252262

Land forming Part Oldsbrim Lot 2 Poundsgate, Newton Abbot | Guide Price £75,000



Approximately 12.62 acres incorporating three immaculate field parcels down to permanent pasture.
Exeter Farms & Land Department
ian.caunter@kivells.com | 01392 252262

Land at Upton Farm Lot 1 Delabole | Guide Price £500,000



Approx. 39.59 acres comprising a ring fence block of level or very gently sloping land currently in arable and temporary pastures contained in large, easy working, enclosures.
Liskeard Farms & Land Department
mark.bunt@kivells.com | 01579 345543

Land at Upton Farm Lot 2 Delabole | Guide Price £1,050,000



Approx. 88.25 acres comprising a block of level or very gently sloping land currently in arable and temporary pastures.
Liskeard Farms & Land Department
mark.bunt@kivells.com | 01579 345543

Land Sale Agreed

KIVELLS

www.kivells.com

Land at Chudleighs Barn Holding Liskeard | Guide Price £100,000 - £125,000



Approximately 20.19 acres of pasture and amenity land with pretty stream frontage and some woodland included.
Liskeard Farms & Land Department
mark.bunt@kivells.com | 01579 345543

Land at Huxhill Weare Giffard, Bideford | Guide Price £550,000



A productive run of good quality arable and pasture land in a favoured location extending to approximately 49.38 acres.
Exeter Farms & Land Department
ben.hancock@kivells.com | 07760 887581

Tregovenek Bungalow, Attwood Lane, Pensilva, Liskeard, Cornwall PL14 5QU

Kivells have been instructed to market Tregovenek, a detached three/four bedroom bungalow in a quiet rural location, close to the village of Bolventor, with good size outside space. The bungalow is subject to an Agricultural Occupancy Condition.

Enquiries to W M Bunt BSc MRICS FAAV, Kivells, 7-8 Bay Tree Hill, Liskeard, Cornwall PL14 4BE

Tel: 01579 345543 or 07879 640970. Email: mark.bunt@kivells.com.