



EXETER LIVESTOCK CENTRE

MARKET REPORT MAY 2026

Monday 4th May – Prime Stock Market



MyFarmWorks

Brought to you by

Shearwell
Data

Livestock Systems

DEMO EVENT

Join us at our
MyFarmWorks
Demo Event –
we'd love to see
you there!



Meet your local rep
Hollie Govier

Exeter Livestock Centre

Friday 29th May | 10am-1pm
Matford Park Road, Exeter, Devon, EX2 8FD

Monday 4th May

44 PRIME CATTLE, CULL COWS & BULLS – 10:45 AM

Auctioneer: Simon Alford – 07789 980203

Prime Cattle to £2443 & 362ppk – Cull Cows & Bulls to £2835 & 280ppk

A decent Bank Holiday Monday turnout of prime and cull cattle saw best prime steers which rise to £2443 (676kg x 362ppk) for Adrian and Bradley Bowden of Drewsteignton for their well-rounded British Blonde followed by a trim Limousin bullock at £2264 (630kg x 360ppk) and a shapely British Blonde heifer realising £2267 (664kg x 342ppk) again from Adrian and Bradley Bowden. A smart British Blue bred heifer (26m) from Phillip and Dan Dennis in from North Tawton drew £2064 (608kg x 340ppk) with much younger sorts (15m) off the same farm coming back at £1852 (530kg x 350ppk) and £1670 (498kg x 336ppk) for a further Blue and an Aberdeen Angus respectively. Over thirty month prime saw a South Devon steer (32m) from Alan Luscombe of Bickington sell readily and for £2266 (794kg x 286ppk). Several cull cows about this week with the very best realising £2157 (772kg x 280ppk) for a stout Aberdeen Angus from AJ Smith & Son of East Budleigh whilst South Devon barreners ran to £1941 (760kg x 256ppk) for Brian and Ben Warne of Manaton. Lean British Blue cows came back at £1703 (644kg x 265ppk) for Roger Coysh up from Sigford whilst very young (27m) lightweight Herefords saw £1543 (480kg x 322ppk) for The Clarence Herd of Shillingford. Dairy bread culls from CG Courtier & Son of Whiddon Down sold to £1249 (656kg x 191ppk) for a Friesian and £1206 (672kg x 180ppk) for a Swiss Red. Three outstanding cull bulls on offer here Exeter this week which topped at a very creditable £2835 (1072kg x 265ppk) for Keith and Hilary Harvey of Bovey Tracey with a grand British Blonde followed by a solid looking Aberdeen Angus making £2688 (1036kg x 260ppk) for Brian Vallance and Family of Bickington and an eye catching red Limousin from AJ Smith & Son realising £2525 (910kg x 278ppk).

Demand is strong for cull cows and prime cattle for Monday's Primestock Market – either tested or untested. Please phone the market office on 01392 251261 or Robert Armstrong on 07791 484290.

5081 SHEEP – 09.30 AM

Auctioneer: Russell Steer 07788 318701

**Prime Lambs to £205 & 503ppk
Mature Sheep to £200 & 351ppk**

**Prime Hoggs to £240 & 430ppk
Cull Ewes to £285 & Rams to £270**

“A busy bank holiday Monday here in the sunshine of Exeter today with just over 5000 sheep forward and sold with good numbers, good quality and a good trade in all sections.”

1956 PRIME SPRING LAMBS

Just shy of 2000 springers saw the handyweights a touch dearer lifting the SQQ by 12pence from last week and taking it back to where it was two weeks ago at 456ppk. Overall average of 448ppk and an average of £190 per head across the board including the really light lambs. Top in the lambs of £205 went to three vendors, Calhayes Farm Partners of Luppitt had an overweight at that money and then both Ben & Sarah Tuck of Honiton and Tom Yandle of Oxton sold 51's at that figure. Other overweights at £202 for PW Churchill of Aylesbeare and £201 for Tom & Sarah Fry of Ottery St Mary as further heavies sold at £202 for Andy and Vanessa O'Brien of Whimple, £201 for Ben Mortimer and family of Powderham and a further four vendors sold heavies at £200. The handyweights making it too with 43's reaching £200 for both Robin Irwin of Kings Nympton and Baker Bros of Highampton whilst Steve & Chris Jeffery of Morchard Bishop sold a super pen of 41kgs that flew to £201 and 490 pence per kilo closely followed by an equally smart pen of 40kg Beltex sired lambs from David Churchill of Axminster that made £199 and 498ppk. Best of the 39's to £189 for Chris Rowdon of Dartmouth followed closely by Toby Allen of Cullompton at £188.50 and the Chudley family of South Molton at £187.50 who also had 38's at £180. Best of the 38's to £188 for John Kittow of Broadclsy and £187.50 for George and Andrew Palk of Paington who also had a smart pen of 35's at £176 and a sale topping 503ppk.

**** VAN or Farm Assurance NOW A MUST FOR ALL SPRING LAMB PRODUCERS please with all major firms requiring one or the other. Without it you are severely disadvantaged!****

1534 PRIME HOGGS & 171 MATURE SHEEP

Old Season were just about a similar trade once again with the smartest overweights nicely over £200 whilst the bulk of the rest were generally £180 to £190 regardless of whether they were 45kgs or 55kgs. Best overweights £240 & £225 for Ian Braund of Holsworthy, £214, £210 twice and £208.50 for Martin and Adam Crabb of Luppitt, £213 for Dave Harris of Stoke Fleming and £209 & £207 for Geoff and Sally Tripp of East Prawle. Plenty of other overweights either side of £200 including the best per kilo being smart 54's at £204 and 378ppk again for Martin & Adam Crabb. 50kgs to £201 again from Geoff & Sally Tripp as 48's reached £192 for Wonnacott Bros of Throwleigh and plenty of 46's trading £185 plus to a top of £188 for John & Matt Crooke of Sandford. Best of the 45's to £187 for Johnson Partners of Chard, £185.50 and £185 twice for Marshay Farms of Pennymoor and £185 also for Josh Northover of Bridport as 44's sold £180.50 again for Wonnacott Bros. 43's to £176 for Darren Reed of Broadwoodkelly who also had smart 39kgs at £163 and 418ppk whilst the top per kilo hogg of the day was a plummy 40kg Beltex from Ian Braund that soared to £172 and 430ppk again for Ian Braund. Lots of end draw and sweepings included in the lighter weights with the fattening men now pulling up the drawbridge for the season and some of the leaner and plainer sorts selling to realization but usually all still top side of £3/kg and leaving us with an SQQ of 392ppk and overall averages of 362ppk and £179 per head.

Toothers to £200 and at 57kgs they also claimed the top price per kilo of 351 for Pauline Hopkins of Honiton with the general run a little harder to sell overall today with averages of £151 and 291ppk.

PRIME LAMBS					
Weight	No.	Top £'s	Top ppk	Av. £'s	Av. ppk
25-31	3	142.00	444	142.00	444
32-39	248	189.00 (-1.00)	503 (+6)	172.94 (+0.26)	461 (+9)
40-45	1440	201.00 (-4.00)	498 (+10)	191.53 (+4.48)	455 (+13)
46-52	240	205.00 (-11.00)	435 (+2)	194.93 (-2.40)	411 (+1)
53+	25	205.00 (-20.00)	381 (-)	195.06 (-6.09)	355 (-7)
PRIME HOGGS					
25-39	72	163.00 (+13.00)	418 (+33)	138.57 (+33.04)	366 (+67)
40-45	351	187.50 (+3.50)	436 (+20)	171.19 (+9.09)	396 (+12)
46-52	604	201.00 (+1.00)	409 (-6)	180.11 (-4.41)	373 (-2)
53+	501	240.00 (-)	378 (+7)	191.01 (-1.21)	332 (-)
MATURE SHEEP	171	200.00 (-20.00)	351 (-10)	151.20 (-5.58)	291 (-1)
		Top		Average	
EWES	1359	£285 (-15)		£170.12 (+0.36)	
RAMS	61	£270 (-2)		£184.77 (+3.01)	





- Competitively priced farm medicines
- Dairy and beef fertility clubs
- 24/7/365 veterinary cover
- Livestock fertility testing and advice
- VetTech services
- In-house labs and lambing bays

www.penbodevets.co.uk
 Holsworthy | Bradworthy | Stratton | Launceston | Camelford

1359 CULL EWES & 61 RAMS

A good show of cull ewes with a consistent trade here at Exeter and although there was a shortage of the top end today there was also a generally better show without the numerous bottom end ewes forward last week and hence an average that was within a pound of last week at £170.12 for the ewes whilst the rams averaged £185.

Charollais topping the trade at £285 twice for Anthony Elsworthy of Witheridge with Adrian & Julie Rich of Halwell selling their Texel types at £250 & £242, DR Stacey of St Austell reaching £240 and Ross May and Family of Netherexe selling at £238. Suffolk cross ewes to £236 for R White of Coleford, £230 for Adrian and Julie Rich and £228 for Tom Proll of Burlescombe with a big pen and similar at £227 for Tom Yandle of Oxton. Plenty of heavy crossbred ewes and Dorset's fresh off their lambs from £175 to £205 and the leaner next cut down were usually all £150 plus. Mules to £180 for Ellen Yandle with plenty of business in the £150's and £160's and leaner sorts still £130 plus. Hill ewes fewer in number but still £120's and £130's for the tidy sorts reaching £174 for Cheviots and the real plain of all breeds back at realization. Tups another big trade with Henry, Mark and Dan Johnson of Bridport clearing out some old boys with a pair of Texel's topping at £270 as well as a pen of 8 Dorset's at £245, Richard Brooks of Bridport reached £268, Mark Hayman and Abi Dart of Bradninch claimed £252 and Tom Proll with a pair at £250.



FARM MACHINERY PROPERTY MARKING EVENT/DEMONSTRATION

Date: Friday 1st May 2026

Venue: MATFORD LIVESTOCK MARKET

Time: 0900hrs-Midday.

Come and meet Devon and Cornwall Police Rural Affairs Team, discuss crime prevention/security measures and forensic property marking opportunities. We look forward to seeing you all.



***Other products are available via the SBD website-Police Preferred Specification on all crime prevention practices*

FORTHCOMING SALES

MONDAY 4TH MAY – EXETER LIVESTOCK CENTRE

Weekly Prime Stock Market

TUESDAY 5TH MAY – EXETER LIVESTOCK CENTRE

Dorset Horn & Poll Dorset May Fair Show

WEDNESDAY 6TH MAY – EXETER LIVESTOCK CENTRE

Dorset Horn & Poll Dorset May Fair Sale

FRIDAY 8TH MAY – EXETER LIVESTOCK CENTRE

Weekly Store Market to include Sale of Dairy Cattle & Fortnightly Pig Sale

MONDAY 11TH MAY – EXETER LIVESTOCK CENTRE

Weekly Prime Stock Market

TUESDAY 12TH MAY – EXETER LIVESTOCK CENTRE

Sale of Dairy Cattle

FRIDAY 15TH MAY – EXETER LIVESTOCK CENTRE

Weekly Store Market

MONDAY 18TH MAY – EXETER LIVESTOCK CENTRE

Weekly Prime Stock Market

FRIDAY 22ND MAY – EXETER LIVESTOCK CENTRE

Weekly Store Market to include Fortnightly Pig Sale

MONDAY 25TH MAY – EXETER LIVESTOCK CENTRE

Weekly Prime Stock Market

TUESDAY 26TH MAY – EXETER LIVESTOCK CENTRE

Monthly Sale of TB Restricted (Orange Market) Cattle

FRIDAY 29TH MAY – EXETER LIVESTOCK CENTRE

Weekly Store Market to include Monthly Sale of Organic Cattle & Sheep, Monthly Catalogued Sale of Beef Breeding Stock including the Show and Sale of Cattle for the South Devon Breeders Club plus Early Sale of Accredited and Non Accredited Stock Rams

MONDAY 1ST JUNE – EXETER LIVESTOCK CENTRE

Weekly Prime Stock Market

FRIDAY 5TH JUNE – EXETER LIVESTOCK CENTRE

Weekly Store Market to include Catalogued Sale of Hogg Couples plus Fortnightly Pig Sale

MONDAY 8TH JUNE – EXETER LIVESTOCK CENTRE

Weekly Prime Stock Market

FRIDAY 12TH JUNE – EXETER LIVESTOCK CENTRE

Weekly Store Market to include Sale of Dairy Cattle plus 38th Annual June Sale of Early Breeding Ewes & Rams including Show & Sale of Dorset X Breeding Ewes.

MONDAY 15TH JUNE – EXETER LIVESTOCK CENTRE

Weekly Prime Stock Market

Farms | Land | Smallholdings

Thinking of selling?

Kivells are at the heart of the farming community throughout the westcountry and beyond and have been selling farms, land and smallholdings since 1885.



Our tailor made service includes;

- ✓ Personal and confidential service
- ✓ Experienced team of Farm Agents
- ✓ Tailor made marketing plans across a variety of platforms
- ✓ Network of contacts within the farming community
- ✓ Added value with advice on Tax, Planning and Stewardship



In-house
bespoke
brochures



Over 40,000
followers on
Social Media



Millions of
page views on
kivells.com,
Rightmove
& Zoopa



Coverage in
national and
regional
publications

With 140 years of industry experience, we pride ourselves in providing friendly and professional advice on all aspects of selling your farm, land or smallholding.

Rolstone Bungalow Morchard Bishop, Crediton

- A wonderfully presented and immaculate four bedroom Bungalow, subject to an Agricultural Occupancy Condition (AOC)
- Adjacent Workshop and Office Unit
- A useful Agricultural Building
- Well maintained productive Pasture Land
- In all totalling approximately 10.74 acres (4.34 hectares)
- EPC: C

Guide Price: £925,000

Exeter Farms & Land Department
exeter@kivells.com | 01392 252262



Farms For Sale

KIVELLS

www.kivells.com

Little Clamoak Farm Bere Ferrers, Yelverton

- A highly private and well located residential farm 4 bedroom dwelling, subject to AOC
- Adaptable range of farm buildings
- Productive run of land extending to just over 26 acres in all
- Sought after location on the Bere Peninsula overlooking the River Tamar
- Freehold with vacant possession available
- EPC: F

Guide Price: £725,000

Exeter Farms & Land Department
exeter@kivells.com | 01392 252262



Farms For Sale

KIVELLS

www.kivells.com

Holdstrong Farmhouse Coryton, Okehampton

- A delightful 5 bedroom 17th Century Devon Longhouse
- Situated in a beautiful rural setting on the edge of the Dartmoor National Park
- Superb views
- Stabling and further outbuildings
- Pond
- Coppice
- In all about 15.87 acres
- Freehold with vacant possession available
- EPC: E

Guide Price: £850,000

Exeter Farms & Land Department
exeter@kivells.com | 01392 252262



Farms For Sale

KIVELLS

www.kivells.com

Puddaven Farm North Bovey, Newton Abbot

- Immaculate Farmhouse
- Stunning two bedroom Holiday Cottage
- Outbuildings and stabling
- Outdoor equine menage
- Well-maintained pasture land
- Versatile lifestyle property
- Far reaching views
- In all totalling approximately 32.35 acres (13.09 hectares)
- EPC: E & D

Guide Price: £1,695,000

Exeter Farms & Land Department
exeter@kivells.com | 01392 252262



Farms For Sale

KIVELLS

www.kivells.com

Oxenpark Farm Hersham, Bude

- Wonderful setting with far reaching views over Bude Bay and the North Cornish coast.
- Three bedroom farmhouse and four further cottages
- Superb range of outbuildings suitable for a variety of uses
- In all about 16.18 acres with further land available by separate negotiation.
- Freehold
- Available as a whole or in three lots
- EPC: D, C, C, C & D

Lot 1: Three bedroom farmhouse, two holiday cottages, one further cottage and a lodge. Range of adaptable farm buildings, income generating wind turbine and just over 16 acres.
Guide Price: £1,395,000

Lot 2: A useful block of 45½ acres of pasture and arable land including 3 acres of mature woodland.
Guide Price: £515,000

Lot 3: A single gently sloping pasture field extending to 6.34 acres.
Guide Price: £85,000

Guide Price (as a whole): £1,995,000

Holsworthy Farms & Land Department
farms@kivells.com | 01409 259547



Farms For Sale

KIVELLS

www.kivells.com

Trehere Farm Trewidland, Liskeard

- Substantial four bedroom (all en-suite) modern house enjoying extensive country views
- Range of buildings currently comprising a livery yard with potential for alternative uses
- Approximately 36.51 acres of pasture, amenity woodland and a sand school
- Wonderful rural location yet conveniently situated close to several villages and the town of Liskeard
- EPC: D

Guide Price: £995,000

Liskeard Farms & Land Department
mark.bunt@kivells.com | 01579 345543



Farms For Sale

KIVELLS

www.kivells.com

Barton Moor Meshaw, South Molton, Devon

- Three bedroom detached bungalow (AOC)
- Range of modern farm buildings with Class Q Permission for five dwellings
- Desirable and accessible location
- Freehold with vacant possession available
- In all about 4.22 acres
- EPC: 23 Band F

Guide Price: £495,000

Exeter Farms & Land Department
ben.hancock@kivells.com | 01392 252262



Farms For Sale

KIVELLS

www.kivells.com

Landabethick Blisland, Bodmin

- Charming, 6 bedroom detached farmhouse
- Excellent range of traditional farm buildings suitable for a variety of uses
- In all about 77 acres comprising a combination of good agricultural land and woodland
- Parking, garaging and workshop space
- Unrivalled, private position at the end of a private drive
- Freehold with vacant possession available
- EPC: D

Guide Price: £1,350,000

Exeter Farms & Land Department
ben.hancock@kivells.com | 01392 252262



Farms For Sale

KIVELLS

www.kivells.com

Great Huish Farm Tedburn St. Mary Exeter

- Grade II Listed detached four bedroom house with three reception rooms
- Two further cottages providing income generation or multi-generation living
- Ring Fenced Farm
- Range of modern and traditional farm buildings
- Development opportunities with some planning consent in place
- Easy access to the A30 & M5
- In all about 8.92 acres of agricultural land with further land available by separate negotiation.
- EPC: C

Guide Price: £1,395,000

Exeter Farms & Land Department
exeter@kivells.com | 01392 252262



Farms For Sale

KIVELLS

www.kivells.com

West Burrow Farm Bratton Clovelly, Okehampton

A quietly set rural small holding offering huge potential.

- Grade II* Listed thatched farmhouse in need of modernisation.
- 3 beds, 2 receptions.
- Two adjoining traditional barns.
- Land and woodland
- EPC: Exempt as a listed property

Guide Price: £645,000

Holsworthy Farms & Land Department
farms@kivells.com | 01409 259547



Farms For Sale

KIVELLS

www.kivells.com

Fern Hill Farm Mount, Bodmin

- Farm with significant development potential
- Range of agricultural and equestrian buildings
- 60.29 acres of land including productive pasture
- Two bedroom lodge
- Planning for farm dwelling and residential caravan
- Located in a super rural location with far reaching valley views
- Freehold with vacant possession upon completion

Guide Price: £1,000,000

Liskeard Farms & Land Department
mark.bunt@kivells.com | 01579 345543



Development Site For Sale

KIVELLS

www.kivells.com

Development Site at Lower Newton Farm Zeal Monachorum, Crediton, Devon

- Valuable residential development opportunity
- Range of agricultural buildings with planning permission for demolition and creation of three new build, detached four and three bedroom dwellings
- Potential under extension of Permitted Development Rights for retention and conversion of the existing buildings (Clarkson's Law - Maximum 10 dwellings), subject to planning
- Additional land available

Guide Price: £450,000

Exeter Farms & Land Department
simon.alford@kivells.com | 01392 252262



Aerial view looking north west

Land For Sale

KIVELLS

www.kivells.com

Land At Trevillies

St. Keyne, Liskeard | Guide Price £375,000 -



Approximately 45.64 acres of productive arable/pasture land and amenity woodland with mains water connected. Freehold with vacant possession upon completion.

Liskeard Farms & Land Department
mark.bunt@kivells.com | 01579 345543

Land at Stoke Canon

Exeter, Devon | Offers in Excess of £375,000

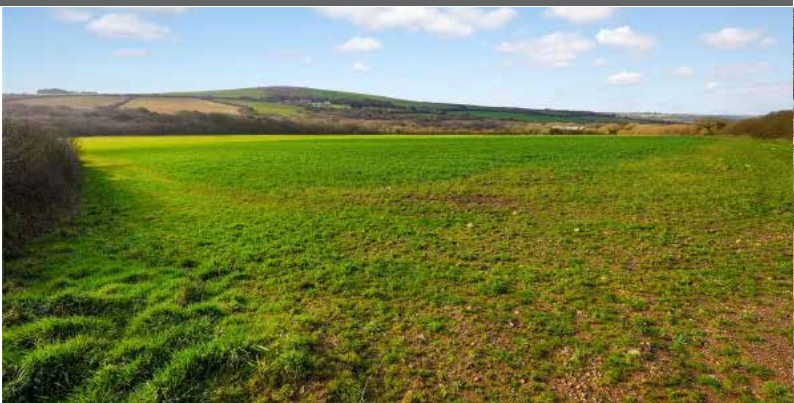


A highly productive run of level arable and pastureland with livestock handling pens extending to just under 46 acres.

Exeter Farms & Land Department
simon.alford@kivells.com | 01392 252262

Land at Criftoe Farm

Tregonetha | Guide Price £675,000 - £700,000



Approximately 64.98 acres of quality cropping land and amenity woodland and a useful modern farm building (with potential for alternative uses, subject to planning).

Liskeard Farms & Land Department
mark.bunt@kivells.com | 01579 345543

Land Off Yorke Road

Dartmouth | Guide Price £195,000



Approximately 12.26 acres in two separate field parcels both down to permanent grassland, previously grazed with livestock.

Exeter Farms & Land Department
exeter@kivells.com | 01392 252262

Land at Polskeys Farm

Roche, St. Austell | Guide Price £495,000



Approximately 59.18 acres of pasture and conservation land accessible off a quiet parish road with mains water connected, a useful livestock building and yard.

Liskeard Farms & Land Department
mark.bunt@kivells.com | 01579 345543

Land at Four Beeches Farm

Sourton, Okehampton | Guide Price £224,000



Approximately 26.25 acres of productive pasture land with easy access to the A386. Suitable for amenity, equestrian and traditional farming.

Exeter Farms & Land Department
exeter@kivells.com | 01392 252262

Land & Buildings at Horwood Horwood, Bideford



A fantastic block of just over 166 ½ acres of productive arable land and a useful range of modern agricultural buildings. **Available in two lots.**

- **LOT 1:** Just over 132 acres of arable land with a range of modern and adaptable farm buildings.
Guide Price: £1,600,000
- **LOT 2:** Circa 34 ½ acres of arable land in a single level field.
Guide Price: £400,000

Holsworthy Farms & Land Agency
farms@kivells.com | 01409 259547

Land for Auction

Wednesday 27th May, 7.00pm

Venue: Lifton Strawberry Fields, Lifton, Devon PL16 0DE

KIVELLS

www.kivells.com

Penloe Field

Woolley, Bude | Auction Guide Price £65,000 - £75,000
For sale by public auction - Wednesday 27th May



Approximately 5.59 acres in a quiet rural setting with lovely views and a useful open sided storage building - 27' x 15' (8.23m x 4.57m) with a rain water harvest tank to one side.

Holsworthy Farms & Land Agency
Farms@kivells.com | 01409 259547

Land at Ugworthy

Chilsworthy, Holsworthy | Auction Guide Price £45,000 - £50,000
For sale by public auction - Wednesday 27th May



Extending to some 5.67 acres, the Land at Ugworthy comprises a mainly level pasture field with natural hedge bank boundaries and a small corrugated sheet clad shed (in poor repair) and an ancient burial ground.

Holsworthy Farms & Land Agency
Farms@kivells.com | 01409 259547

Land at Milton Damarel

Holsworthy | Auction Guide Price £20,000
For sale by public auction - Wednesday 27th May



This pretty 2.42 acre field comprises a mainly level paddock which benefits from excellent access from the adjoining main road on its northern boundary. The land would be suitable for amenity purposes, keeping livestock or ponies.

Holsworthy Farms & Land Agency
Farms@kivells.com | 01409 259547

Land at Broad Parkham

Parkham, Bidford I | Auction Guide Price £75,000 - £85,000
For sale by public auction - Wednesday 27th May



Some 8.50 acres benefiting from road frontage and excellent access. The land comprises a very gently sloping pasture field which is enclosed within natural hedge banks.

Holsworthy Farms & Land Agency
Farms@kivells.com | 01409 259547

Land West of Wainhouse Corner

St. Gennys, Bude | Auction Guide Price £140,000 - £150,000
For sale by public auction - Wednesday 27th May



A useful block of just over 15.5 acres of pasture land, with excellent access from the adjoining main road. The land is very gently sloping and extremely well fenced.

Holsworthy Farms & Land Agency
Farms@kivells.com | 01409 259547

Land at Furzedon Field

Trewidland, Liskeard | Auction Guide Price £110,000 - £115,000
For sale by public auction - Wednesday 27th May



Approximately 13.80 acres of pasture land in a ring fence block with a woodland stream boundary and fringe and mains water connected to three troughs.

Liskeard Farms & Land Agency
mark.bunt@kivells.com | 01579 345543

Land for Auction

Wednesday 27th May, 7.00pm

Venue: Lifton Strawberry Fields, Lifton, Devon PL16 0DE

KIVELLS

www.kivells.com

Land at St Keyne

Liskeard | Auction Guide Price £5,000 - £10,000

For sale by public auction - Wednesday 27th May



Approximately 0.40 acres of woodland and amenity land accessible off a quiet parish road, in a picturesque valley location with a woodland stream running through.

Liskeard Farms & Land Agency

mark.bunt@kivells.com | 01579 345543

Land at Kelynack

St. Just, Penzance | Auction Guide Price £130,000

For sale by public auction - Wednesday 27th May



An excellent opportunity to purchase a 13.54 acre block of predominantly level agricultural land in a superb position, just inland from the West Cornish coastline.

Holsworthy Farms & Land Agency

Farms@kivells.com | 01409 259547

2026 Auction Dates

Wednesday 27th May

Wednesday 24th June

Wednesday 29th July

Wednesday 2nd September

Wednesday 7th October

Wednesday 11th November

Thinking of selling by auction? Contact our experienced team today for a **FREE** no obligation auction appraisal.

www.kivells.com

Previous Auction Results

Wednesday 22nd April, 7.00pm

KIVELLS

www.kivells.com

Trefuge Bungalow Coads Green, Launceston, Cornwall

- For sale by Public Auction on Wednesday 22nd April, 7.00pm at Lifton Strawberry Fields, Lifton, Devon PL16 0DH
- Three bedroom bungalow of non traditional construction and in need of updating
- Set in just over 5 acres of gently sloping pasture
- Useful Nissen hut storage shed
- Lovely quiet rural setting with superb moorland views
- EPC = E (46)

Auction Guide Price: £250,000
SOLD: £358,000

Holsworthy Farms & Land Department
farms@kivells.com | 01409 259547



Previous Auction Results

Wednesday 22nd April, 7.00pm

KIVELLS

www.kivells.com

Land & Yard known as Tall Trees

Kit Hill, Callington | Auction Guide Price £25,000

SOLD: £56,000



A great opportunity to acquire a yard, building and 1¼ acres in need of upgrading. Road frontage and good access.

[Holsworthy Farms & Land Agency](mailto:Farms@kivells.com)
Farms@kivells.com | 01409 259547

Land at Sladelands Farm

Botus Fleming, | Auction Guide Price £130,000 - £140,000

SOLD: £140,000



Approximately 9.95 acres of pasture, amenity and woodland and a range of buildings currently providing a stable yard. The land is accessible off a quiet parish road and has mains electricity and mains water available.

[Liskeard Farms & Land Agency](mailto:mark.bunt@kivells.com)
mark.bunt@kivells.com | 01579 345543

Land lying north of The Pastures

Bratton Clovelly | Auction Guide Price £50,000 - £75,000

SOLD: £68,000



2.11 acres of pasture land, great for livestock grazing or as a pony paddock. Some long term potential, subject to gaining the necessary planning consents.

[Holsworthy Farms & Land Agency](mailto:Farms@kivells.com)
Farms@kivells.com | 01409 259547

Land & Buildings at Klymiarven

Tintage | Auction Guide Price £175,000 - £195,000

SOLD: £275,000



Approximately 13.25 acres of level pasture land with a small range of buildings and yard. The land is situated in a great location in the village, not far from the North Cornish coast.

[Holsworthy Farms & Land Agency](mailto:Farms@kivells.com)
Farms@kivells.com | 01409 259547

Land at Yonder Park

Ebberley, Torrington | Auction Guide Price £295,000 - £315,000

SOLD: £315,000



A fantastic block of approximately 31.42 acres of arable land, divided in to four good sized fields and benefiting from good access from the adjoining parish road and far reaching countryside views.

[Holsworthy Farms & Land Agency](mailto:Farms@kivells.com)
Farms@kivells.com | 01409 259547

Land at Lower Wringworthy

Morval, Looe | Auction Guide Price £90,000 - £95,000

SOLD: £95,000



Approximately 10.09 acres comprising two very gently sloping enclosures of permanent pasture accessible off a quiet parish road. The land has previously been used for livestock grazing and forage conservation purposes.

[Liskeard Farms & Land Agency](mailto:mark.bunt@kivells.com)
mark.bunt@kivells.com | 01579 345543

Farms Sale Agreed

KIVELLS

www.kivells.com

Keymelford Farm Buildings & Land Keymelford, Colebrook, Crediton, Devon



Lot 1 - Agricultural buildings and yard area with land surrounding extending to 0.41 acres.
Guide Price: £150,000

Lot 2 - Agricultural building with concrete pad and land surrounding extending to 0.41 acres.
Guide Price: £135,000

Lot 3 - A small grassland area extending to approximately 0.14 acres. **Guide Price: £25,000**

Exeter Farms & Land Agency
exeter@kivells.com | 01392 252262

Tor Court Farm Torbryan, Newton Abbot



- Four bedroom, Grade II Listed farmhouse
- Stone barns and a modern agricultural building with potential for alternative uses (stp)
- A truly hidden gem located in a peaceful yet accessible location
- Stunning, well-maintained pasture, orchards and woodland
- In all approximately 67.43 acres (27.28 hectares)

Guide Price: £1,210,000

Exeter Farms & Land Department
ian.caunter@kivells.com | 01392 252262

Farms Sale Agreed

KIVELLS

www.kivells.com

Sandenbury
Tregadillett, Launceston



- Smallholding in a lovely rural, yet accessible location
- Three bedroom bungalow (AOC) in need of modernising
- Range of pole barns
- Just over 40 acres of pasture land including some woodland
- A fantastic blank canvas
- EPC: D

Guide Price: £650,000

Holworthy Farms & Land Department
farms@kivells.com | 01409 259547

Sensham Farm
Marhamchurch, Bude



- Substantial modern farmhouse and separate first floor flat, both in need of modernisation
- Range of adaptable farm buildings with stabling
- Set in some 57 acres
- Not far from the North Cornish coast
- EPCs: D and F

Guide Price: £1,600,000

Holworthy Farms & Land Department
farms@kivells.com | 01409 259547

Farms Sale Agreed

KIVELLS

www.kivells.com

Trelissick Farm Sithney, Helston



In a beautiful sheltered setting, an 85 acre stock farm. For sale as a whole or in 3 lots.

LOT 1: Farmhouse, range of modern livestock and storage buildings, traditional stone barns (some with planning for residential development), set in just over 28 acres of land. EPC: E. **Guide Price: £1,300,000**

LOT 2: A super run of gently sloping pasture land extending to some 43½ acres. **Guide Price: £375,000**

LOT 3: Just over 14 acres and a former waterworks building with planning in principal for a dwelling. Guide Price: **£290,000**

Holsworthy Farms & Land Department
farms@kivells.com | 01409 259547

East Coombe Farm St. Pinnock, Liskeard



- Three bedroom, two bathroom, three reception room character detached house
- Splendid private location, with far reaching rural views
- Outbuildings with significant potential for alternative uses
- Located in rural East Cornwall between the wide expanses of Bodmin Moor and the South Cornish coastline
- In all 45.50 acres of land and woodland
- EPC: E & D

Guide Price: £900,000

Liskeard Farms & Land Department
liskeard@kivells.com | 01579 345543

Land Sale Agreed

KIVELLS

www.kivells.com

Land off Blackacre Lane

St Columb | Guide Price £150,000 - £155,000



Approx 12.87 acres comprising a single enclosure of gently sloping land currently in a temporary ley. In recent years has been used for arable and vegetable growing purposes.
Liskeard Farms & Land Agency
mark.bunt@kivells.com | 01579 345543

Land at Viverdon Down

St. Mellion, Saltash | Guide Price £465,000



Just under 45 acres of productive pasture land in a very accessible location with lovely far reaching views.
Holsworthy Farms & Land Agency
farms@kivells.com | 01409 259547

Land forming Part Oldsbrim Lot 1

Poundsgate, Newton Abbot | Guide Price £150,000



Approximately 26.19 acres incorporating a block of permanent grassland together with areas of rough grazing.
Exeter Farms & Land Department
ian.caunter@kivells.com | 01392 252262

Land forming Part Oldsbrim Lot 2

Poundsgate, Newton Abbot | Guide Price £75,000



Approximately 12.62 acres incorporating three immaculate field parcels down to permanent pasture.
Exeter Farms & Land Department
ian.caunter@kivells.com | 01392 252262

Land at Upton Farm Lot 1

Delabole | Guide Price £500,000



Approx. 39.59 acres comprising a ring fence block of level or very gently sloping land currently in arable and temporary pastures contained in large, easy working, enclosures.
Liskeard Farms & Land Department
mark.bunt@kivells.com | 01579 345543

Land at Upton Farm Lot 2

Delabole | Guide Price £1,050,000



Approx. 88.25 acres comprising a block of level or very gently sloping land currently in arable and temporary pastures.
Liskeard Farms & Land Department
mark.bunt@kivells.com | 01579 345543

Land Sale Agreed

KIVELLS

www.kivells.com

Land at Chudleighs Barn Holding Liskeard | Guide Price £100,000 - £125,000



Approximately 20.19 acres of pasture and amenity land with pretty stream frontage and some woodland included.
Liskeard Farms & Land Department
mark.bunt@kivells.com | 01579 345543

Land at Huxhill Weare Giffard, Bideford | Guide Price £550,000



A productive run of good quality arable and pasture land in a favoured location extending to approximately 49.38 acres.
Exeter Farms & Land Department
ben.hancock@kivells.com | 07760 887581

Tregovenek Bungalow, Attwood Lane, Pensilva, Liskeard, Cornwall PL14 5QU

Kivells have been instructed to market Tregovenek, a detached three/four bedroom bungalow in a quiet rural location, close to the village of Bolventor, with good size outside space. The bungalow is subject to an Agricultural Occupancy Condition.

Enquiries to W M Bunt BSc MRICS FAAV, Kivells, 7-8 Bay Tree Hill, Liskeard, Cornwall PL14 4BE

Tel: 01579 345543 or 07879 640970. Email: mark.bunt@kivells.com.