



EXETER LIVESTOCK CENTRE

MARKET REPORT MAY 2026

Friday 8th May – Store Stock Market



MyFarmWorks

Brought to you by

Shearwell
Data

Livestock Systems

DEMO EVENT

Join us at our
MyFarmWorks
Demo Event –
we'd love to see
you there!



Meet your local rep
Hollie Govier

Exeter Livestock Centre

Friday 29th May | 10am-1pm
Matford Park Road, Exeter, Devon, EX2 8FD

Friday 8th May 2026

446 STORE CATTLE AND STIRKS– 10.00am

Auctioneer: Simon Alford – 07789 980203

Store Steers to £2420 – Store Heifers to £2260

With perhaps the exception of those stronger close to finish steers and heifers, stores did look a stronger trade right across the board here at Exeter on Friday with a mostly good quality yarding now seeing more of those seasonal grazing buyers joining the usual contingent of local and away purchasers all keen to secure big numbers. Having said that, there were still plenty of cattle sold north of that £2000 mark with steers topping out at £2420 for a solid looking Limousin (27m) for Peter Hooper of Bovey Tracey followed by later born Limousins in the way of an eye catching pair (23m) from John and Emily Northam of Wellington which drew £2390 apiece. Smart yearling Limousin bullocks ran to £1820 for April Haydon of South pool. Peter Hooper was soon back when selling well farmed British Blue steers (30m) to £2380 whilst handy bunches of good Blues (23m) from David and Wendy Holland in from Dolton saw £2160 and £2120. The better of the Aberdeen Angus steers (24m) came back at £2190 for MS & JS Southwood of Black Dog followed by more native breeds seeing Hereford steers (24m) rising to £2110 for Russell Retter and Family in from Cotleigh. Also, very decent Friesian steers (28m) from Norman Pyle of Bow eased to £2030. One of the highlights of the day was a super run of Simmental cross cattle out of South Devon and Limousin cows from Dave and Mark Risdon in from Broadwoodkelly who saw their very best steers (just 13m) easily come back at £1980 for a trio, they were followed by more top quality yearling steers from April Haydon in the way of a couple of shapely Charolais which went on to draw £1800 a life. A much better lot of heifers about this week with many more of those passing the £2000 landmark too and peaking at £2260 for an outstanding British Blue (26m) from Peter Hooper again followed by the second pick of well farmed Charolais heifers (25m) from Phillip and Richard Coaker in from Postbridge, this week selling to £2200 and £2110. John and Emily Northam were back when parting with well-kept and fed Limousin females (25m) for £2090 and £2050 whilst a strong overage Simmental (32m) from Andrew Shervington and Family of Hittisleigh saw a decent enough £2020. Very tidy Aberdeen Angus heifers (25m) returned £1880 and £1870 for Rob Moore of Diptford and Colin and Philip Gibbins from Feniton respectively. In the sundry section we saw a couple of good framed British Blue feeding bulls (13m) sell for a creditable £2040 for Ed Pincombe of Chulmleigh whilst a super young Hereford heifer with her 1 month old Angus bull calf at foot sold well and for £2000 for Richard Dunn in from Colebrook. Grazing cows sold to £2150 for a grand South Devon from Phillip and Richard Coaker with Charolais barreners rising to £1780 for Roger Hunt and Family up from Stoke Gabriel.

Red Tractor Please ensure you inform us if your Red Tractor status has changed since last consigning stock with us or if the residency rules for the animals you are selling have not been met.

Please could we remind all customers of the need to clean and disinfect their vehicles and to complete the Vendor Declaration on the back of the entry forms. Thank you



Penbode
Farm Vets

- Competitively priced farm medicines
- Dairy and beef fertility clubs
- 24/7/365 veterinary cover
- Livestock fertility testing and advice
- VetTech services
- In-house labs and lambing bays

www.penbodevets.co.uk
Holsworthy | Bradworthy | Stratton | Launceston | Camelford

135 STIRKS & SUCKLED CALVES

Auctioneer: Ian Caunter 07813 068935

A tremendous trade for all types forward. April Hayden of South Pool presented a smashing run of Charolais cross suckled calves with the best topping out at £1740 (10m) with younger types to £1710 (8m), £1690 & £1550. Bernie Serpell of Plympton sold Charolais cross steers (13m) to £1700 with others to £1450 and Simmental cross steers from the same good home to £1410. Josh Webber of Yarcombe sold the best of the dairy bred Blues (13m) to £1540 whilst Hereford steers from M Neate-Serpell of Plympton achieved £1270 (10m). HT Davis of Chagford sold a pair of neatly presented Limousin cross steers (8m) which levelled out at £1200, the same figure realised for Holland Farmers of Tavistock selling Angus steers (8m) with Hereford steers off the same farm attaining £1160. Dairy bred Angus steers from RN Giles & Son of Down Thomas hit £1180 (12m). Heifers topped out at £1500 on two occasions for April Hayden selling Charolais crosses (9m). Further Charolais heifers from Bernie Serpell realised £1270 whilst Simmental crosses off the same holding achieving £1180. RS Winsor of Princetown levelled out at £1200 for Simmental cross heifers with others to £1110. Best of the natives saw Holland Farmers achieve £1080 for Angus heifers with younger Hereford heifers (8m) topping out at £1060. A tight entry of dairy bred stirks saw N & C Holland & Son of West Anstey realise £1050 for Blue heifers (8m) with others to £1000.

101 CALVES 10.15 AM

Auctioneer: Mark Davis 07773 371774

A slightly bigger entry of calves sold to a roaring trade!

Top of the day was £820 for a month old Charolais bull from John Simmons of Poltimore who sold another at £510. Other Charolais bulls made £740 for Rob & Jack Chapple of Axminster. British Blue bulls sold to £700 for Roy & Katherine Emmett of South Molton, £685 for Bradley & Hailey Foss of Totnes, £620 & £550 for Nigel, Brenda & Tucker of Tiverton and £575 x 2 for Martinsfield Farm Enterprises LLP of Broadclyst. Native bulls topped at £585 for a young Aberdeen Angus bull from JLH Vallis & Son of Bradninch with others to £550 & £495 for Messrs AJ & JA Lock of Cullompton.

CALVES	Bulls			Heifers		
		TOP	AVE		TOP	AVE
British Blue	10	700	565	17	700	528
Charolais	4	820	612	3	610	546
Aberdeen Angus	22	585	294	15	580	311
Hereford	6	575	496	16	480	366
Ayrshire	7	242	205			

Hereford bulls to £575 & £500 for Messrs DW Cole & Son of Bradninch with others £535, £510 & £490 for Wastnage Farms Ltd of Budleigh Salterton. **Heifer Calves topped at £700** for a smart British Blue heifer from Bradley & Hailey Foss with others to £670 & £660 for Rob & Jack Chapple, £635 for Messrs CDG & EM Gooding & Son of Ottery St Mary, £625 for Roy & Katherine Emmett, £600 for Messrs AJ & JA Lock and £585 for Nigel, Brenda & Tucker. Charolais heifers to £610 & £540 for John Simoons and £490 for Crokers Grange Farm Ltd of Newton Abbot. Native heifers topped at £580 & £465 for month old Aberdeen Angus heifers from Messrs JLH Vallis & Son with others to £460 & £430 for Bradley & Hailey Foss. Hereford Heifers a flying trade to £480, £470, £450, £430 & £410 for Wastnage Farms Ltd. **Dairy Bulls to £242** x 2 for Ayrshire bulls from Messrs Nicholls of South Molton who sold others to £210 & £198 x 2.

95 DAIRY CATTLE

Auctioneer: Mark Davis 07773 371774

7 over £3,000

Top Price 3,700gns

A good entry of dairy cattle sold to a cracking trade with the freshly calved cows & heifers in strong demand! There were a lot of heifers forward which had calved three to four months which were a shade easier as perhaps expected to be! James Wooldridge & Family of Gloucester sold a super consignment of cows & heifers from their Latterfield herd to a top price of £3,800 for a super second calver with other cows to £3,400, £3,000, £2,900 & £2,800 and heifers from the same home topped at £3,500 with others to £3,150, £3,100, £3,050 & £2,800 twice. The consignment of 24 averaged a very creditable £2,706! Klass & Josh Dekker sold a consignment of 11 cows & heifers from their Veldhouse herd to top at £3,000 for a fresh heifer with others to £2,850 for a smart second calver and £2600 & £2,550. Their consignment averaged £2375. The Smale Family of Launceston sold 3 heifers from their dispersed Glebewin herd to £2400, £2350 & £2250. Owen Williams of Helston sold a nice Dairy Shorthorn heifer at £2100 and an Ayrshire heifer from GCB Davis of Tiverton sold well at £2050. British Friesian heifers to £2000 for Steve Loud & Partners of Colyton. A consignment of mainly older Friesian & Crossbred cows sold well to £2150, £2100, £1950 x 2 & £1900 for David Hichens of Penzance. Dry cows sold well to a top of £2200 for Bolderston Partners of Norfolk who also sold a Jersey dry cow at £1800.

65 PIGS

Auctioneer: Andrew Varney

21 Cull sows met a mixed trade selling to a top price of £100 from J Tamblyn of Saltash others to £82 from the same farm and £75 from H & F Burrough from Dalwood.

20 Prime pigs sold to a good trade with a run of smart bacon pigs from Messrs Bray & Sons of Bude, selling to a top price of £170 (144kg x 118ppk), others to £165 (160kg x 103.1ppk). Pork pigs to £110 (95kg x 1157kg) others to £98 (89kg x 110.1ppk) all from Mrs Turner of Beaworthy.

A good entry of weaners met a firm trade with small gilts from H & F Burrough selling to £78 & £52 x2 for R Elliott of Knowstone.

Next Pig Sale here at Exeter will be held on Friday 22nd May, it is vital that you let us know of your potential entries in plenty of time so we can advise vendors together with prospective purchasers of expected numbers forward.

888 SHEEP – 10.45 AM
Auctioneer: Russell Steer 07788 318701

Orphan Lambs to £55 Store Hogs to £182 Grazing Ewes to £189
Single Couples to £500 Double Couples to £580

73 ORPHAN LAMBS

Orphan trade a touch easier overall as the season draws on, some strength either side of £50 to a top of £55 for Barry Mildon and Family of Cadbury closely followed by both Jim Winzer of Modbury and the Baxter Family of Exwick with strong pairs as Lovaton Farm partnership of South Tawton saw their best make £51 and numerous vendors sold lambs in the forties. The bottom end still keenly bid for though with very little less than £20 and an overall average of £33.55 is £9 less on the last few weeks.

130 STORE HOGGS & NEW SEASON LAMBS

A typical May entry of “tidy up” stores met with a decent trade overall for the goods on offer. Katherine Starr of Dunkeswell sold heavy hogs to £182 as well as toothers at £155 & £154, closely followed by Bill Heath of Bickington with smart hogs at £180 and Martin Cooper of South Brent reached £169 with his best. Lots of business done in the £150's including some needing more time yet and some smaller hill sorts. Plainer and leaner things still £110 to £130 and looking well sold leaving as well as toothers in amongst the entry and selling within £20 of their baby teeth counter parts. A pen of milk sheep x new season sold at £126 for Tom & Helen Garland of Woodbury Salterton as well as a solitary pen of Greyfaced Dartmoor x new season lambs at £104 for N Widger of Southleigh. Average £135.42.

86 GRAZING EWES

A tidy entry for the time of year and trade still straight throughout with Steve Francis of South Tawton topping with a single Texel at £268 as well as a ram at £170 and the best of his Scotch ewes selling at £140. Nest best ewes also from South Tawton, this time from Lovaton Farm Partners with a pen of Lleyns at £182 followed by the Shervington family of Hittisleigh with their best at £180 and Kevin Bateman of Butterleigh with his best at £160.

237 EWES/HOGGS & 342 LAMBS (579 LIVES)

A nice entry of couples sold in front of a smaller crowd of buyers with trade generally no faster. Louise Winsor of Black Torrington had a handful of smart pure and pedigree Texel & badger faced Texel first time lambing outfits that kicked things off well with a super Texel ewe with single ewe lamb making £500 whilst another Texel rearing a ram and ewe lamb rose to £580 and her two Badger faced Texel's rearing ram singles old readily at £360 and £350. A couple of smart runs of flock aged Texel x ewes and lambs took the next top spot at £415, firstly RH Henson of Cadeleigh sold a pen of 5 with 10 for that money as well as singles with the same comments at £340. Also at £415 was Josh Webber of Yarcombe with a big pen of 12 with 24 as well as his pen of 12 singles that made £320. Ray Tucker of Bridford then next up with a strong Suffolk x double at £355, Martin Partridge of Christow with Dorset doubles at £328 and Lee Brothers of Chulmleigh with Mule doubles at £325. In general doubles were either side of £300 including a bunch of 24 Mule FM's with 48 Texel sired lambs from Alex Lawler of Nomansland that made £305. Other single to those mentioned above to £292 for Sam Wright and family of Chittlehamholt and the general run of these £100 to £120 per life.

A few hogg couples about again this week with Martin Partridge selling a Charollais cross with strong lamb at £300 followed by Gary & Helen Woodman with their strong Mule hogg singles at £272 & £270 three times. Berrichon cross hogg singles at £245 for Phil Rogers of Noss Mayo and a smart Suffolk x Hogg single at £240 for Rich Berry of Kenn.

Fewer hill ewes this week with Jack Haskell selling a smart Cheviot single at £202 as well as doubles to £240 and Sam Hutchings of Bradninch sold Badger faced Welsh ewes with singles to £180. Overall averages of £271 per outfit and £110.78 per life is just a few pounds less than last week.



FARM MACHINERY PROPERTY MARKING EVENT/DEMONSTRATION

Date: Friday 1st May 2026

Venue: MATFORD LIVESTOCK MARKET

Time: 0900hrs-Midday.

Come and meet Devon and Cornwall Police Rural Affairs Team, discuss crime prevention/security measures and forensic property marking opportunities. We look forward to seeing you all.



***Other products are available via the SBD website-Police Preferred Specification on all crime prevention practices*

FORTHCOMING SALES

MONDAY 11TH MAY – EXETER LIVESTOCK CENTRE
Weekly Prime Stock Market

TUESDAY 12TH MAY – EXETER LIVESTOCK CENTRE
Sale of Dairy Cattle

FRIDAY 15TH MAY – EXETER LIVESTOCK CENTRE
Weekly Store Market

MONDAY 18TH MAY – EXETER LIVESTOCK CENTRE
Weekly Prime Stock Market

FRIDAY 22ND MAY – EXETER LIVESTOCK CENTRE
Weekly Store Market to include Fortnightly Pig Sale

MONDAY 25TH MAY – EXETER LIVESTOCK CENTRE
Weekly Prime Stock Market

TUESDAY 26TH MAY – EXETER LIVESTOCK CENTRE
Monthly Sale of TB Restricted (Orange Market) Cattle

FRIDAY 29TH MAY – EXETER LIVESTOCK CENTRE
Weekly Store Market to include Monthly Sale of Organic Cattle & Sheep, Monthly Catalogued Sale of Beef Breeding Stock including the Show and Sale of Cattle for the South Devon Breeders Club plus Sale of Dairy Cattle plus Catalogued Sale of Hogg Couples plus Fortnightly Pig Sale (please note change of date for this sale).

MONDAY 1ST JUNE – EXETER LIVESTOCK CENTRE
Weekly Prime Stock Market

FRIDAY 5TH JUNE – EXETER LIVESTOCK CENTRE
Weekly Store Market to include Fortnightly Pig Sale

MONDAY 8TH JUNE – EXETER LIVESTOCK CENTRE
Weekly Prime Stock Market

FRIDAY 12TH JUNE – EXETER LIVESTOCK CENTRE
Weekly Store Market to include Sale of Dairy Cattle plus 38th Annual June Sale of Early Breeding Ewes & Rams including Show & Sale of Dorset X Breeding Ewes.

MONDAY 15TH JUNE – EXETER LIVESTOCK CENTRE
Weekly Prime Stock Market

FRIDAY 19TH JUNE – EXETER LIVESTOCK CENTRE
Weekly Store Market to include 1st Weekly Sale of Store Lambs, Monthly Catalogued Sale of Beef Breeding Stock, Fortnightly Pig Sale and Collective Standing Straw Sale.

MONDAY 22ND JUNE – EXETER LIVESTOCK CENTRE
Weekly Prime Stock Market

FRIDAY 26TH JUNE – EXETER LIVESTOCK CENTRE
Weekly Store Market to include Monthly Sale of Organic Cattle and Sheep, Sale of Dairy Cattle

Farms | Land | Smallholdings

Thinking of selling?

Kivells are at the heart of the farming community throughout the westcountry and beyond and have been selling farms, land and smallholdings since 1885.



Our tailor made service includes;

- ✓ Personal and confidential service
- ✓ Experienced team of Farm Agents
- ✓ Tailor made marketing plans across a variety of platforms
- ✓ Network of contacts within the farming community
- ✓ Added value with advice on Tax, Planning and Stewardship



In-house
bespoke
brochures



Over 40,000
followers on
Social Media



Millions of
page views on
kivells.com,
Rightmove
& Zoopla



Coverage in
national and
regional
publications

With 140 years of industry experience, we pride ourselves in providing friendly and professional advice on all aspects of selling your farm, land or smallholding.

Farms For Sale

KIVELLS

www.kivells.com

Vennbrook Varley Farm, PRIXFORD, Barnstaple

- 100 acre residential and stock farm
- Attractive, well proportioned bungalow (AOC)
- Useful range of livestock and storage buildings
- Ring fenced pasture land
- Superb views
- EPC C [77]

Guide Price: £1,800,000

Holworthy Farms & Land Department
farms@kivells.com | 01409 259547



Rolstone Bungalow Morchard Bishop, Crediton

- A wonderfully presented and immaculate four bedroom Bungalow, subject to an Agricultural Occupancy Condition (AOC)
- Adjacent Workshop and Office Unit
- A useful Agricultural Building
- Well maintained productive Pasture Land
- In all totalling approximately 10.74 acres (4.34 hectares)
- EPC: C

Guide Price: £925,000

Exeter Farms & Land Department
exeter@kivells.com | 01392 252262



Farms For Sale

KIVELLS

www.kivells.com

Little Clamoak Farm Bere Ferrers, Yelverton

- A highly private and well located residential farm 4 bedroom dwelling, subject to AOC
- Adaptable range of farm buildings
- Productive run of land extending to just over 26 acres in all
- Sought after location on the Bere Peninsula overlooking the River Tamar
- Freehold with vacant possession available
- EPC: F

Guide Price: £725,000

Exeter Farms & Land Department
exeter@kivells.com | 01392 252262



Farms For Sale

KIVELLS

www.kivells.com

Holdstrong Farmhouse Coryton, Okehampton

- A delightful 5 bedroom 17th Century Devon Longhouse
- Situated in a beautiful rural setting on the edge of the Dartmoor National Park
- Superb views
- Stabling and further outbuildings
- Pond
- Coppice
- In all about 15.87 acres
- Freehold with vacant possession available
- EPC: E

Guide Price: £850,000

Exeter Farms & Land Department
exeter@kivells.com | 01392 252262



Farms For Sale

KIVELLS

www.kivells.com

Puddaven Farm North Bovey, Newton Abbot

- Immaculate Farmhouse
- Stunning two bedroom Holiday Cottage
- Outbuildings and stabling
- Outdoor equine menage
- Well-maintained pasture land
- Versatile lifestyle property
- Far reaching views
- In all totalling approximately 32.35 acres (13.09 hectares)
- EPC: E & D

Guide Price: £1,695,000

Exeter Farms & Land Department
exeter@kivells.com | 01392 252262



Oxenpark Farm Hersham, Bude

- Wonderful setting with far reaching views over Bude Bay and the North Cornish coast.
- Three bedroom farmhouse and four further cottages
- Superb range of outbuildings suitable for a variety of uses
- In all about 16.18 acres with further land available by separate negotiation.
- Freehold
- Available as a whole or in three lots
- EPC: D, C, C, C & D

Lot 1: Three bedroom farmhouse, two holiday cottages, one further cottage and a lodge. Range of adaptable farm buildings, income generating wind turbine and just over 16 acres.
Guide Price: £1,395,000

Lot 2: A useful block of 45½ acres of pasture and arable land including 3 acres of mature woodland.
Guide Price: £515,000

Lot 3: A single gently sloping pasture field extending to 6.34 acres.
Guide Price: £85,000

Guide Price (as a whole): £1,995,000

Holsworthy Farms & Land Department
farms@kivells.com | 01409 259547



Farms For Sale

KIVELLS

www.kivells.com

Trehere Farm Trewidland, Liskeard

- Substantial four bedroom (all en-suite) modern house enjoying extensive country views
- Range of buildings currently comprising a livery yard with potential for alternative uses
- Approximately 36.51 acres of pasture, amenity woodland and a sand school
- Wonderful rural location yet conveniently situated close to several villages and the town of Liskeard
- EPC: D

Guide Price: £995,000

Liskeard Farms & Land Department
mark.bunt@kivells.com | 01579 345543



Farms For Sale

KIVELLS

www.kivells.com

Barton Moor Meshaw, South Molton, Devon

- Three bedroom detached bungalow (AOC)
- Range of modern farm buildings with Class Q Permission for five dwellings
- Desirable and accessible location
- Freehold with vacant possession available
- In all about 4.22 acres
- EPC: 23 Band F

Guide Price: £495,000

Exeter Farms & Land Department
ben.hancock@kivells.com | 01392 252262



Farms For Sale

KIVELLS

www.kivells.com

Landabethick Blisland, Bodmin

- Charming, 6 bedroom detached farmhouse
- Excellent range of traditional farm buildings suitable for a variety of uses
- In all about 77 acres comprising a combination of good agricultural land and woodland
- Parking, garaging and workshop space
- Unrivalled, private position at the end of a private drive
- Freehold with vacant possession available
- EPC: D

Guide Price: £1,350,000

Exeter Farms & Land Department
ben.hancock@kivells.com | 01392 252262



Farms For Sale

KIVELLS

www.kivells.com

Great Huish Farm Tedburn St. Mary Exeter

- Grade II Listed detached four bedroom house with three reception rooms
- Two further cottages providing income generation or multi-generation living
- Ring Fenced Farm
- Range of modern and traditional farm buildings
- Development opportunities with some planning consent in place
- Easy access to the A30 & M5
- In all about 8.92 acres of agricultural land with further land available by separate negotiation.
- EPC: C

Guide Price: £1,395,000

Exeter Farms & Land Department
exeter@kivells.com | 01392 252262



Farms For Sale

KIVELLS

www.kivells.com

West Burrow Farm Bratton Clovelly, Okehampton

A quietly set rural small holding offering huge potential.

- Grade II* Listed thatched farmhouse in need of modernisation.
- 3 beds, 2 receptions.
- Two adjoining traditional barns.
- Land and woodland
- EPC: Exempt as a listed property

Guide Price: £645,000

Holsworthy Farms & Land Department
farms@kivells.com | 01409 259547



Farms For Sale

KIVELLS

www.kivells.com

Fern Hill Farm Mount, Bodmin

- Farm with significant development potential
- Range of agricultural and equestrian buildings
- 60.29 acres of land including productive pasture
- Two bedroom lodge
- Planning for farm dwelling and residential caravan
- Located in a super rural location with far reaching valley views
- Freehold with vacant possession upon completion

Guide Price: £1,000,000

Liskeard Farms & Land Department
mark.bunt@kivells.com | 01579 345543



Development Site For Sale

KIVELLS

www.kivells.com

Development Site at Lower Newton Farm Zeal Monachorum, Crediton, Devon

- Valuable residential development opportunity
- Range of agricultural buildings with planning permission for demolition and creation of three new build, detached four and three bedroom dwellings
- Potential under extension of Permitted Development Rights for retention and conversion of the existing buildings (Clarkson's Law - Maximum 10 dwellings), subject to planning
- Additional land available

Guide Price: £450,000

Exeter Farms & Land Department
simon.alford@kivells.com | 01392 252262



Aerial view looking north west

Land For Sale

KIVELLS

www.kivells.com

Land At Trevillies

St. Keyne, Liskeard | Guide Price £375,000 -



Approximately 45.64 acres of productive arable/pasture land and amenity woodland with mains water connected. Freehold with vacant possession upon completion.

Liskeard Farms & Land Department
mark.bunt@kivells.com | 01579 345543

Land at Stoke Canon

Exeter, Devon | Offers in Excess of £375,000

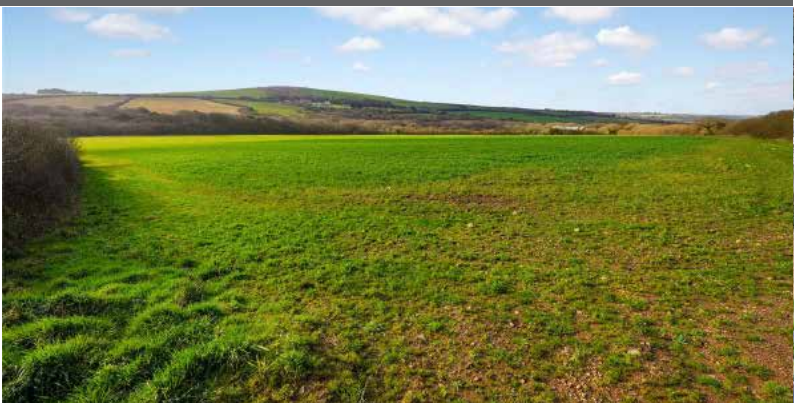


A highly productive run of level arable and pastureland with livestock handling pens extending to just under 46 acres.

Exeter Farms & Land Department
simon.alford@kivells.com | 01392 252262

Land at Criftoe Farm

Tregonetha | Guide Price £675,000 - £700,000



Approximately 64.98 acres of quality cropping land and amenity woodland and a useful modern farm building (with potential for alternative uses, subject to planning).

Liskeard Farms & Land Department
mark.bunt@kivells.com | 01579 345543

Land Off Yorke Road

Dartmouth | Guide Price £195,000



Approximately 12.26 acres in two separate field parcels both down to permanent grassland, previously grazed with livestock.

Exeter Farms & Land Department
exeter@kivells.com | 01392 252262

Land at Polskeys Farm

Roche, St. Austell | Guide Price £495,000



Approximately 59.18 acres of pasture and conservation land accessible off a quiet parish road with mains water connected, a useful livestock building and yard.

Liskeard Farms & Land Department
mark.bunt@kivells.com | 01579 345543

Land at Four Beeches Farm

Sourton, Okehampton | Guide Price £224,000



Approximately 26.25 acres of productive pasture land with easy access to the A386. Suitable for amenity, equestrian and traditional farming.

Exeter Farms & Land Department
exeter@kivells.com | 01392 252262

Land at Higher Reedy Mill

Trewidland, Liskeard | Guide Price £50,000



Approximately 4.39 acres of pasture land, accessible off a quiet parish road close to the village of Trewidland in a quiet rural location with far reaching views.

Liskeard Farms & Land Department
mark.bunt@kivells.com | 01579 345543

Land & Buildings at Horwood

Horwood, Bideford



A fantastic block of just over 166 ½ acres of productive arable land and a useful range of modern agricultural buildings. **Available in two lots.**

- **LOT 1:** Just over 132 acres of arable land with a range of modern and adaptable farm buildings.
Guide Price: £1,600,000
- **LOT 2:** Circa 34 ½ acres of arable land in a single level field.
Guide Price: £400,000

Holsworthy Farms & Land Agency
farms@kivells.com | 01409 259547

GRASS KEEP FOR SALE BY INFORMAL TENDER Rosedown Farm, Hartland, Devon EX39 6AH



Approximately 78.41 acres available in one lot, to cut and/or graze with sheep. Available 1st June 2026 to 31st October 2026. Tenders to be submitted by 12 noon on Wednesday 20th May 2026.

Toby Theobald
toby.theobald@kivells.com | 01409 253275

GRASS KEEP FOR SALE BY INFORMAL TENDER Land known as the Prairie Land, North of Tor Down, Exbourne EX20 3QU



58.95 acres available in one lot for cutting and/or grazing purposes. Available from 1st June 2026 to 31st October 2026, Tenders to be submitted by 12 noon on Tuesday 19th May 2026.

Toby Theobald
toby.theobald@kivells.com | 01409 253275

GENERAL PURPOSE BUILDING TO LET Stourscombe, Launceston | £595 pcm



A new 45' x 30' shed at Stourscombe near Launceston, with great access to A30/A388. Ideal for storage.

Thomas Rattray
thomas.rattray@kivells.com | 07813 016804

Land for Auction

Wednesday 27th May, 7.00pm

Venue: Lifton Strawberry Fields, Lifton, Devon PL16 0DE

KIVELLS

www.kivells.com

Penloe Field

Woolley, Bude | Auction Guide Price £65,000 - £75,000
For sale by public auction - Wednesday 27th May



Approximately 5.59 acres in a quiet rural setting with lovely views and a useful open sided storage building - 27' x 15' (8.23m x 4.57m) with a rain water harvest tank to one side.

Holsworthy Farms & Land Agency
Farms@kivells.com | 01409 259547

Land at Ugworthy

Chilsworthy, Holsworthy | Auction Guide Price £45,000 - £50,000
For sale by public auction - Wednesday 27th May



Extending to some 5.67 acres, the Land at Ugworthy comprises a mainly level pasture field with natural hedge bank boundaries and a small corrugated sheet clad shed (in poor repair) and an ancient burial ground.

Holsworthy Farms & Land Agency
Farms@kivells.com | 01409 259547

Land at Milton Damarel

Holsworthy | Auction Guide Price £20,000
For sale by public auction - Wednesday 27th May



This pretty 2.42 acre field comprises a mainly level paddock which benefits from excellent access from the adjoining main road on its northern boundary. The land would be suitable for amenity purposes, keeping livestock or ponies.

Holsworthy Farms & Land Agency
Farms@kivells.com | 01409 259547

Land at Broad Parkham

Parkham, Bidford I | Auction Guide Price £75,000 - £85,000
For sale by public auction - Wednesday 27th May



Some 8.50 acres benefiting from road frontage and excellent access. The land comprises a very gently sloping pasture field which is enclosed within natural hedge banks.

Holsworthy Farms & Land Agency
Farms@kivells.com | 01409 259547

Land West of Wainhouse Corner

St. Gennys, Bude | Auction Guide Price £140,000 - £150,000
For sale by public auction - Wednesday 27th May



A useful block of just over 15.5 acres of pasture land, with excellent access from the adjoining main road. The land is very gently sloping and extremely well fenced.

Holsworthy Farms & Land Agency
Farms@kivells.com | 01409 259547

Land at Furzedon Field

Trewidland, Liskeard | Auction Guide Price £110,000 - £115,000
For sale by public auction - Wednesday 27th May



Approximately 13.80 acres of pasture land in a ring fence block with a woodland stream boundary and fringe and mains water connected to three troughs.

Liskeard Farms & Land Agency
mark.bunt@kivells.com | 01579 345543

Land for Auction

Wednesday 27th May, 7.00pm

Venue: Lifton Strawberry Fields, Lifton, Devon PL16 0DE

KIVELLS

www.kivells.com

Land at St Keyne

Liskeard | Auction Guide Price £5,000 - £10,000

For sale by public auction - Wednesday 27th May



Approximately 0.40 acres of woodland and amenity land accessible off a quiet parish road, in a picturesque valley location with a woodland stream running through.

Liskeard Farms & Land Agency

mark.bunt@kivells.com | 01579 345543

Land at Kelynack

St. Just, Penzance | Auction Guide Price £130,000

For sale by public auction - Wednesday 27th May



An excellent opportunity to purchase a 13.54 acre block of predominantly level agricultural land in a superb position, just inland from the West Cornish coastline.

Holsworthy Farms & Land Agency

Farms@kivells.com | 01409 259547

2026 Auction Dates

Wednesday 27th May

Wednesday 24th June

Wednesday 29th July

Wednesday 2nd September

Wednesday 7th October

Wednesday 11th November

Thinking of selling by auction? Contact our experienced team today for a **FREE** no obligation auction appraisal.

www.kivells.com

Previous Auction Results

Wednesday 22nd April, 7.00pm

KIVELLS

www.kivells.com

Trefuge Bungalow Coads Green, Launceston, Cornwall

- For sale by Public Auction on Wednesday 22nd April, 7.00pm at Lifton Strawberry Fields, Lifton, Devon PL16 0DH
- Three bedroom bungalow of non traditional construction and in need of updating
- Set in just over 5 acres of gently sloping pasture
- Useful Nissen hut storage shed
- Lovely quiet rural setting with superb moorland views
- EPC = E (46)

Auction Guide Price: £250,000
SOLD: £358,000

Holsworthy Farms & Land Department
farms@kivells.com | 01409 259547



Previous Auction Results

Wednesday 22nd April, 7.00pm

KIVELLS

www.kivells.com

Land & Yard known as Tall Trees

Kit Hill, Callington | Auction Guide Price £25,000

SOLD: £56,000



A great opportunity to acquire a yard, building and 1¼ acres in need of upgrading. Road frontage and good access.

[Holsworthy Farms & Land Agency](mailto:Farms@kivells.com)
Farms@kivells.com | 01409 259547

Land at Sladelands Farm

Botus Fleming, | Auction Guide Price £130,000 - £140,000

SOLD: £140,000



Approximately 9.95 acres of pasture, amenity and woodland and a range of buildings currently providing a stable yard. The land is accessible off a quiet parish road and has mains electricity and mains water available.

[Liskeard Farms & Land Agency](mailto:mark.bunt@kivells.com)
mark.bunt@kivells.com | 01579 345543

Land lying north of The Pastures

Bratton Clovelly | Auction Guide Price £50,000 - £75,000

SOLD: £68,000



2.11 acres of pasture land, great for livestock grazing or as a pony paddock. Some long term potential, subject to gaining the necessary planning consents.

[Holsworthy Farms & Land Agency](mailto:Farms@kivells.com)
Farms@kivells.com | 01409 259547

Land & Buildings at Klymiarven

Tintage | Auction Guide Price £175,000 - £195,000

SOLD: £275,000



Approximately 13.25 acres of level pasture land with a small range of buildings and yard. The land is situated in a great location in the village, not far from the North Cornish coast.

[Holsworthy Farms & Land Agency](mailto:Farms@kivells.com)
Farms@kivells.com | 01409 259547

Land at Yonder Park

Ebberley, Torrington | Auction Guide Price £295,000 - £315,000

SOLD: £315,000



A fantastic block of approximately 31.42 acres of arable land, divided in to four good sized fields and benefiting from good access from the adjoining parish road and far reaching countryside views.

[Holsworthy Farms & Land Agency](mailto:Farms@kivells.com)
Farms@kivells.com | 01409 259547

Land at Lower Wringworthy

Morval, Looe | Auction Guide Price £90,000 - £95,000

SOLD: £95,000



Approximately 10.09 acres comprising two very gently sloping enclosures of permanent pasture accessible off a quiet parish road. The land has previously been used for livestock grazing and forage conservation purposes.

[Liskeard Farms & Land Agency](mailto:mark.bunt@kivells.com)
mark.bunt@kivells.com | 01579 345543

Farms Sale Agreed

KIVELLS

www.kivells.com

Keymelford Farm Buildings & Land Keymelford, Colebrook, Crediton, Devon



Lot 1 - Agricultural buildings and yard area with land surrounding extending to 0.41 acres.
Guide Price: £150,000

Lot 2 - Agricultural building with concrete pad and land surrounding extending to 0.41 acres.
Guide Price: £135,000

Lot 3 - A small grassland area extending to approximately 0.14 acres. **Guide Price: £25,000**

Exeter Farms & Land Agency
exeter@kivells.com | 01392 252262

Tor Court Farm Torbryan, Newton Abbot



- Four bedroom, Grade II Listed farmhouse
- Stone barns and a modern agricultural building with potential for alternative uses (stp)
- A truly hidden gem located in a peaceful yet accessible location
- Stunning, well-maintained pasture, orchards and woodland
- In all approximately 67.43 acres (27.28 hectares)

Guide Price: £1,210,000

Exeter Farms & Land Department
ian.caunter@kivells.com | 01392 252262

Farms Sale Agreed

KIVELLS

www.kivells.com

Sandenbury
Tregadillett, Launceston



- Smallholding in a lovely rural, yet accessible location
- Three bedroom bungalow (AOC) in need of modernising
- Range of pole barns
- Just over 40 acres of pasture land including some woodland
- A fantastic blank canvas
- EPC: D

Guide Price: £650,000

Holworthy Farms & Land Department
farms@kivells.com | 01409 259547

Sensham Farm
Marhamchurch, Bude



- Substantial modern farmhouse and separate first floor flat, both in need of modernisation
- Range of adaptable farm buildings with stabling
- Set in some 57 acres
- Not far from the North Cornish coast
- EPCs: D and F

Guide Price: £1,600,000

Holworthy Farms & Land Department
farms@kivells.com | 01409 259547

Farms Sale Agreed

KIVELLS

www.kivells.com

Trelissick Farm Sithney, Helston



In a beautiful sheltered setting, an 85 acre stock farm. For sale as a whole or in 3 lots.

LOT 1: Farmhouse, range of modern livestock and storage buildings, traditional stone barns (some with planning for residential development), set in just over 28 acres of land. EPC: E. **Guide Price: £1,300,000**

LOT 2: A super run of gently sloping pasture land extending to some 43½ acres. **Guide Price: £375,000**

LOT 3: Just over 14 acres and a former waterworks building with planning in principal for a dwelling. Guide Price: **£290,000**

Holsworthy Farms & Land Department
farms@kivells.com | 01409 259547

East Coombe Farm St. Pinnock, Liskeard



- Three bedroom, two bathroom, three reception room character detached house
- Splendid private location, with far reaching rural views
- Outbuildings with significant potential for alternative uses
- Located in rural East Cornwall between the wide expanses of Bodmin Moor and the South Cornish coastline
- In all 45.50 acres of land and woodland
- EPC: E & D

Guide Price: £900,000

Liskeard Farms & Land Department
liskeard@kivells.com | 01579 345543

Land Sale Agreed

KIVELLS

www.kivells.com

Land off Blackacre Lane St Columb | Guide Price £150,000 - £155,000



Approx 12.87 acres comprising a single enclosure of gently sloping land currently in a temporary ley. In recent years has been used for arable and vegetable growing purposes.
Liskeard Farms & Land Agency
mark.bunt@kivells.com | 01579 345543

Land at Viverdon Down St. Mellion, Saltash | Guide Price £465,000



Just under 45 acres of productive pasture land in a very accessible location with lovely far reaching views.
Holsworthy Farms & Land Agency
farms@kivells.com | 01409 259547

Land forming Part Oldsbrim Lot 1 Poundsgate, Newton Abbot | Guide Price £150,000



Approximately 26.19 acres incorporating a block of permanent grassland together with areas of rough grazing.
Exeter Farms & Land Department
ian.caunter@kivells.com | 01392 252262

Land forming Part Oldsbrim Lot 2 Poundsgate, Newton Abbot | Guide Price £75,000



Approximately 12.62 acres incorporating three immaculate field parcels down to permanent pasture.
Exeter Farms & Land Department
ian.caunter@kivells.com | 01392 252262

Land at Upton Farm Lot 1 Delabole | Guide Price £500,000



Approx. 39.59 acres comprising a ring fence block of level or very gently sloping land currently in arable and temporary pastures contained in large, easy working, enclosures.
Liskeard Farms & Land Department
mark.bunt@kivells.com | 01579 345543

Land at Upton Farm Lot 2 Delabole | Guide Price £1,050,000



Approx. 88.25 acres comprising a block of level or very gently sloping land currently in arable and temporary pastures.
Liskeard Farms & Land Department
mark.bunt@kivells.com | 01579 345543

Land Sale Agreed

KIVELLS

www.kivells.com

Land at Chudleighs Barn Holding Liskeard | Guide Price £100,000 - £125,000



Approximately 20.19 acres of pasture and amenity land with pretty stream frontage and some woodland included.
Liskeard Farms & Land Department
mark.bunt@kivells.com | 01579 345543

Land at Huxhill Weare Giffard, Bideford | Guide Price £550,000



A productive run of good quality arable and pasture land in a favoured location extending to approximately 49.38 acres.
Exeter Farms & Land Department
ben.hancock@kivells.com | 07760 887581

Tregovenek Bungalow, Attwood Lane, Pensilva, Liskeard, Cornwall PL14 5QU

Kivells have been instructed to market Tregovenek, a detached three/four bedroom bungalow in a quiet rural location, close to the village of Bolventor, with good size outside space. The bungalow is subject to an Agricultural Occupancy Condition.

Enquiries to W M Bunt BSc MRICS FAAV, Kivells, 7-8 Bay Tree Hill, Liskeard, Cornwall PL14 4BE

Tel: 01579 345543 or 07879 640970. Email: mark.bunt@kivells.com.