



EXETER LIVESTOCK CENTRE

MARKET REPORT

APRIL 2026

Friday 10th April – Store Stock Market



MyFarmWorks

Brought to you by

Shearwell
Data

Livestock Systems

DEMO EVENT

Join us at our
MyFarmWorks
Demo Event –
we'd love to see
you there!



Meet your local rep
Hollie Govier

Exeter Livestock Centre

Friday 29th May | 10am-1pm
Matford Park Road, Exeter, Devon, EX2 8FD

Friday 10th April 2026

1006 STORE CATTLE & STIRKS – 10.00am

Auctioneer: Simon Alford – 07789 980203

Store Steers to £2700 – Store Heifers to £2430
Incorporating Our Third Judged Spring Sale of Continental Bred Cattle

A bumper entry of 600 head of store cattle and totalling 1006 with the younger sorts through the stirk ring this week saw unprecedented returns right across the board with strong buyer support in attendance from both away and closer to home whipping up strong demand right across the board and dearer again from our last sale here at Exeter. Top call of the day was for a pair of fine, powerful Limousins (26m) from Keith and Joel Sparks down from Churchinford which drew a considerable £2700 apiece whilst eye catching bunches of Charolais and Simmental bullocks (24m) from the same sellers eased to £2680 and £2640 respectfully. Further high class Charolais bred steers (26m) from Alan Hembrow and Family up from Braddock reached a very decent £2600 for a pen of four whilst Dan Gould of Blagdon Hill saw his best of that breed (20m) rise to £2520. Also, very smart younger (15m) Charolais from Paul and Jason Hooper of Kingsbridge came back at £2390. More of those well grown and farmed Limousins (29m) saw £2480 for Ken Harris of Lee Mill and £2460 for Bovey Tracey's Peter Hooper whilst later born sorts (25m) still ran to £2430 for Derek Pyle in from Clyst Honiton and other Simmentals (22m) of high stature from Malcolm Coumbe and Family of Lamellion. A pair of the usual high standard Beef Shorthorn steers (18m) from Ian Littlejohns of Okehampton looked decent money at £2390 apiece for a couple whilst Derek Pyle was back and parting with British Blue bullocks (25m) for £2330 followed by a single blue of the same age from Allison Clack of Kenn was close at £2320. Other steer prices of note included a pen of very smart British Blondes (21m) from Andrew Down of Barnstaple which realised £2240 followed by Friesians (30m) making £2180 for Derek Pyle once more and Hereford steers (24m) drawing £2180 for Ivor and Neil Pellow of Sourton. The store heifer section was led by Alan Hembrow and Family in the way of a pen of five well turned out Charolais (26m) which came back at £2430 a life whilst a Aberdeen Angus of the same age and off the same farm fetched £2380. Also, a smart younger Angus heifers (18m) saw £2170 for Stuart Coombes of Bridgwater. Paul and Jason Hooper were back and selling tremendous Limousin bred heifers (23m) for £2370 and £2360 whilst Peter Hooper saw his best Limousins (21m) sell for £2290 x3. The latter also sold shapely British Blue females (30m) to £2300 followed by more stylish Beef Shorthorns (30m) from Ian Littlejohns who saw his trim heifer (30m) for £2300 as well. Also, Dave Hoskin in from Christow sold a tidy aged (36m) Simmental for £2180.

Results from our Third Judged Spring Sale of Continental Bred Cattle

First Steers	Malcolm Coumbe & Family Liskeard	3 Limousins	(22m) @ £2350
Second Steers	Dan Gould, Taunton	2 Charolais	(24m) @ £2480
First Heifers	Andrew Down, Barnstaple	4 Blondes	(22m) @ £1800
Second Heifers	Alan Hembrow & Family Braddock	5 Charolais	(25m) @ £2190

Red Tractor Please ensure you inform us if your Red Tractor status has changed since last consigning stock with us or if the residency rules for the animals you are selling have not been met.

Please could we remind all customers of the need to clean and disinfect their vehicles and to complete the Vendor Declaration on the back of the entry forms. Thank you



Penbode
Farm Vets

- Competitively priced farm medicines
- Dairy and beef fertility clubs
- 24/7/365 veterinary cover
- Livestock fertility testing and advice
- VetTech services
- In-house labs and lambing bays

www.penbodevets.co.uk
Holsworthy | Bradworthy | Stratton | Launceston | Camelford

407 STIRKS & SUCKLED CALVES

Auctioneer: Ian Caunter 07813 068935

A tremendous entry of over 400 forward met a superb trade throughout. Ben Tristram of Wellington sold Limousin cross steers (11m) to £1670 with a cracking run of Blue steers off the same holding (8m) topping out at £1520. Markwell Farm Partnership of Saltash sold a well presented run of Hereford cross steers with the best levelling out at £1660 (11m) with others to £1620. Angus steers from David & Justine Colton of Princetown realised £1650 (10m) with others to £1510, £1460, £1380 & £1360 (8m). IG Mortimore & Son of Chagford sold Charolais cross steers (11m) to £1630 whilst the best of the South Devon steers rose to £1580 for Michael Scott of Drewsteignton. Neat Limousin cross steers from Quiney & Spears of Moretonhampstead (11m) achieved £1510 whilst Simmental cross steers from CS & K Hoskin of Christow realised £1490 (12m). A super run of dairy bred Limousin cross steers from Marshay Farm Limited of Tiverton (7m) topped out at an impressive £1460 x2 with others attaining £1450 whilst further dairy types this time being Blues from William Goulden of Axminster (9m) achieved the same figure. Further native types saw Brittain & Co of South Brent attain £1450 for South Devon steers (12m) and a worthy mention for Alan Bickley of Tiverton selling Beef Shorthorns (12m) to £1440. Younger dairy bred stirks a flying trade with CG Courtier & Son selling Blue cross steers (5/6m) to £1340 x2 with others to £1310 & £1290 whilst Angus steers off the same good farm (6m) rose to £1100. Heifers topped out at £1420 for Ben Tristram selling Charolais crosses (11m) with similar goods from IG Mortimore & Son realised £1400 with the best of the natives selling to £1380 and £1120 (10m) for Herefords from Markwell Farm Partnership. Dairy bred Limousin heifers from Marshay Farm Limited stormed to £1320 (8m) with others to £1240. South Devon heifers from Brittain & Co sold to £1240 (11m) whilst neat dairy bred Blues from M & P Smith of Launceston (12m) attained £1230 with similar types from William Goulden achieving £1220. Younger Blue heifers from CG Courtier & Son (6m) flew to £1210 with others to £1170, £1160 & £1150. A wonderful run of in excess of 400 stirks and suckled calves met a flying trade. More kindly requested in the coming weeks.

139 CALVES 10.15 AM

Auctioneer: Mark Davis 07773 371774

A decent show of calves sold to a flying trade for all classes! Top of the day was £860 for six Aberdeen Angus bulls from Messrs GE Ellett & Son of Exmouth. Limousin bulls sold to £760 x 2 and £720 for Eichard Widger & Partners of Kingsbridge. Baby calves topped at £745, £735 & £700 for Charolais bulls from John Simoons of Poltimore. Young Limousin bulls to £640 for Phil Humphrey of Axminster and £570 for Michael Pyle of Broadhembury. British Blue bulls to £720 for HMV Weekes of Cullompton with others to £640 for Mr RAP

Grant of Tiverton, £635 for Messrs Broom & Son of Cullompton, £620 for Emmett Farming Ltd of Cullompton, £620 for Sam Parris of Stockland, £600 for Cooper Farm Partnership of Ivybridge and £592 & £572 for Andrew & Rachel Webber of Cullompton. Simmental bulls sold well with a cracking run of young bulls to £660, £640 & £600 x 2 for WE Organic Dairies of Chulmleigh. Young Aberdeen Angus bulls to £700 for Michael Pyle with others to £540 x 2 for WE Organic Dairies

CALVES	Bulls			Heifers		
		TOP	AVE		TOP	AVE
British Blue	20	720	547	14	730	442
Limousin	5	760	690	6	720	618
Charolais	5	745	626	2	520	455
Simmental	10	725	544	6	715	546
Aberdeen Angus	15	860	574	21	680	369
Devon				2	430	340
Hereford				1	360	360
Fleckvieh	4	390	252			
Friesians	24	330	188	1	375	375

and Phil Humphrey. **Heifer calves topped at £730** for a strong British Blue heifer for Lynch Farms Ltd of Thorverton with younger Blue heifers to £600 for Emmett Farming Ltd, £540 for Sam Parris & £520 for Mr RAP Grant. Limousin heifers to £720 x 2, £700 & £680 for Richard Widger & Partners. Young Simmental heifers to £715 for WE Organic Dairies who sold others to £600, £555 & £500. Charolais heifers to £520 for John Simmons. Aberdeen Angus heifers a cracking trade topping at £680 x 4 for Messrs GE Ellett & Son with younger sorts to £515 & £480 for Lower Collipriest Farm Ltd of Tiverton and £475 & £445 for Phil Humphrey who also sold Longhorn heifers to £490. Devon heifers to £430 for Sam Parris. Dairy bulls saw a good entry with Fleckvieh bulls to £390 for Roger Pennington of Crediton with others to £230 & £200 for WE Organic Dairies who also topped the Friesians at £330 with others to £300 x2 and £290 for Michael Pyle and £285 for Lynch Farms Ltd.

51 DAIRY CATTLE

Auctioneer: Mark Davis 07773 371774

The Gold Top Sale of 50 pedigree Jerseys sold to a flying trade at Exeter attracting buyers from Pembrokeshire, Cheshire and across the Westcountry.

Fresh milk was in strong demand and topped at 3100gns for “Cardinney Victorious Rainbow GP84” a second calver by River Valley Victorious from James Warren & Family of Penzance who sold another second calver at 2300gns and the best of their heifers sold to 2550gns for “Cardinney Addiction Deborah” and 2500gns for “Cardinney Masterclass Honeysuckle”. Mike & Claire Colwell of Looe sold a consignment of 18 freshly calved heifers to top at £2800gns for “Quintrell Bowlers Delve” by Dulet Bowlers with others to £2400gns for “Quintrell Addiction Marvel” and 2350gns. Oliver Neagle of Winchester sold a consignment of fresh cows & heifers to top at 2000gns for “Hiltonbury Roulette Carnation” with others to 1850gns and his second calvers sold to 1720gns. Jeff & Anthea Daw of Newcastle Emllyn sold a fresh heifer “Jubilee Engineer Ceres 2” at 1950gns. Ashley Johns of Camborne sold his best fresh heifer at 1700gns for “Trenoweth Addiction Bopplenut”. In calf heifers topped at 1850gns for “Quintrell Laspada Nicole” from Mike & Claire Colwell who sold others to 1750gns. Autumn calving in calf heifers sold to a flying trade with October calving heifers topping at 1600gns for Oliver Neagle who sold others to 1550gns and 1500gns three times.

Averages:

Freshly Calved Cows & Heifers

Cardinney	£2467
Trenoweth	£1627
Quintrell	£2038
Hiltonbury	£1831
Jubilee	£2047

In Calf Heifers

Quintrell	£1742
Hiltonbury	£1606

PIGS

Auctioneer: Andrew Varney

A small entry of cull sows and boars met a steady trade selling to a top price of £158 from Messrs Bray & Sons of Bude with others off the same good farm. Feeding sows to £35 from SJ Gribble & Son of Launceston. Cull boars to £60.

Prime bacon pigs to £168 (131kg x 128.2ppk) others to £165 (132kg x 125ppk) and £158 (143kg x 110.4ppk) all from Messrs Bray & Son.

A decent entry of weaners sold to a good trade selling to £85 & £75 from DG, CM & WA Horton of Roborough. Many more wanted.

Next Pig Sale here at Exeter will be held on Friday 24th April, it is vital that you let us know of your potential entries in plenty of time so we can advise vendors together with prospective purchasers of expected numbers forward.

1998 SHEEP – 10.45 AM
Auctioneer: Russell Steer 07788 318701

Orphan Lambs to £70 Store Hogs to £179 Grazers to £214
In-Lambers to £205 Double Couples to £428 Singles Couples to £368

“The sheep pens held their own on a busy day across the whole market. 2306 sheep penned and sold, with pleasingly strong trades in all sections.”

157 ORPHAN LAMBS

157 Orphan lambs and goat kids saw a top price of £70 achieved by both James Alexander of UMBERLEIGH and Phillip Burrough of Sidmouth with pairs of weaned lambs whilst younger sorts sold readily in the £20's, £30's and £40's despite the large number and they averaged a few pence short of £30. Martin and Helen Boyd of Dartmouth saw their young goat kids sell to a top of £55 with plenty of others at £42.

1069 STORE HOGGS

Just over 1000 store hogs were a very mixy show with a third of the entry coming off the hills. Best hogs to £179 for both Mark Monkhouse of Honiton and Rich Northey of Liskeard, with Rich's being Cheviot x Welsh ram hogs and selling further pens at £174, £173 & £168, Tom Elliott of Winkleigh sold his hogs to £178, £172 & £170 as Tony Francis of North Tawton sold his Herdwick Mules to £174 and Rob Chanin of Thorverton sold his at £173. A plethora of Scotch and Welsh hogs as well as several other rare breeds and many lacking size or meat but all still trading £90 to £120 with the better end more than that and an overall average of £126 seems pretty insignificant given the strength of trade.

129 GRAZING EWES

129 grazers peaked at £198 for S Burch of Merrymeet as R Palmer of Colyton made £180 and the Heywood Family of Modbury reached £175. Plenty of half meat grazers in the £150's and £160's with lesser sorts back from that and all looking well sold and a pen of late lambing Mule ewes realised £180 for Steve Bonner of Meshaw.

253 EWES & 373 LAMBS (626 LIVES)

A massive show of 359 ewes with 565 lambs were a tidy trade throughout with yet more buyers again in the alleys and many capable of handling big numbers to leave us with averages of £115.80 per life and £295 per Family.

Top money going to Phillip Burrough and Family of Sidmouth with a large pen of Suffolk x one crop ewes with strong Char x lambs that realised £465 or £155 per life closely followed by their next pen with the same comments at £435. Mervyn Brice of Stoddleigh sold first time lambing Dorset x Mules with Berrichon sired lambs well at £412 whilst BH Lane of Honiton had continental doubles at £405 and Kevin Wreyford of Totnes reached £395. Phillip Burrough also with the best of the Mules with young doubles selling to £390 as both Graham Hill of Wiggaton and Helen Pearse of Bickington sold crossbred flock aged doubles at £380 and the Mortimore Family of Widecombe sold a great pen of Lleyne type doubles well at £370. Plenty of doubles looking £15 to £20 apiece dearer than two weeks ago with anything tidy £300 to £360 including a large group of 28 Mule FM ewes with 56 Texel x lambs from Jim Winzer of Modbury that realised £342. Singles well chased with even Mules trading £250 plus to a top of £275 again from Jim Winzer whilst Lleyne singles reached £318 again for the Mortimore Family, a price matched by BH Lane with their Texel cross singles. More couples needed each week please to keep up with this demand, we're also looking for big groups off farm if you have any about.

CENTURION SHEEP BREEDERS GROUP SHOW & SALE

The Centurion Group of Dorset breeders held their 35th annual show and sale here today and although there was a smaller number and some technical issues pre sale the sale was heralded a great success and possibly the best to date. 15 of the 18 rams forward found new homes and averaged an impressive £725 with tops of 1100gns for The Ram of The Year, a lamb from the Huish flock of Rich Rossiter and Family, Kingsbridge who also sold another ram lamb at 1000gns, a price matched by AP & L Brookin down from Ceredigion with a shearling as Woodburn Farm Partners of Tiverton sold a smart pen of shearlings at 950gns, 800gns twice and 600gns and Stuart Alderson of Bolton sold his shearling ram at 900gns.

Personal thanks to all vendors, buyers, hauliers, drovers and office staff on a big day in Exeter and we're back here to do it all again on Monday with primestock, Wednesday with the YFC Day and next Friday when we've a special sale of MV accredited couples.



KIVELLS www.kivells.com

Rural Professional

Exeter 01392 252262
Holsworthy 01409 253275
Launceston 01566 776886
Liskeard 01579 345543

Your Kivells Rural Professional Department offer a complete valuation and rural service.

- ✓ Capital Grants
- ✓ Compensation
- ✓ Renewables Advice
- ✓ Sustainable Farming Incentive
- ✓ Valuations
- ✓ Planning
- ✓ Landlord/Tenant



FARM MACHINERY PROPERTY MARKING EVENT/DEMONSTRATION

Date: Friday 1st May 2026

Venue: MATFORD LIVESTOCK MARKET

Time: 0900hrs-Midday.

Come and meet Devon and Cornwall Police Rural Affairs Team, discuss crime prevention/security measures and forensic property marking opportunities. We look forward to seeing you all.



***Other products are available via the SBD website-Police Preferred Specification on all crime prevention practices*

FORTHCOMING SALES

MONDAY 13TH APRIL – EXETER LIVESTOCK CENTRE

Weekly Prime Stock Market

WEDNESDAY 15TH APRIL – EXETER LIVESTOCK CENTRE

Devon YFC Show & Sale

FRIDAY 17TH APRIL – EXETER LIVESTOCK CENTRE

Weekly Prime Stock Market to include Monthly Catalogued Sale of Beed Breeding Stock including Special Sales of Charolais & Salers Bulls & Females, Sale of Pedigree and Purebred Ewes and Lambs and Ewe Hoggs.

MONDAY 20TH APRIL – EXETER LIVESTOCK CENTRE

Weekly Prime Stock Market

FRIDAY 24TH APRIL – EXETER LIVESTOCK CENTRE

Weekly Store Market to include Monthly Sale of Organic Cattle & Sheep, Sale of Dairy Cattle plus Fortnightly Pig Sale

MONDAY 27TH APRIL – EXETER LIVESTOCK CENTRE

Weekly Prime Stock Market

TUESDAY 28TH APRIL – EXETER LIVESTOCK CENTRE

Monthly Sale of TB Restricted (Orange Market) Cattle

FRIDAY 1ST MAY – EXETER LIVESTOCK CENTRE

Weekly Store Market to include Catalogued Sale of Hogg Couples

MONDAY 4TH MAY – EXETER LIVESTOCK CENTRE

Weekly Prime Stock Market

TUESDAY 5TH MAY – EXETER LIVESTOCK CENTRE

Dorset Horn & Poll Dorset May Fair Show

WEDNESDAY 6TH MAY – EXETER LIVESTOCK CENTRE

Dorset Horn & Poll Dorset May Fair Sale

FRIDAY 8TH MAY – EXETER LIVESTOCK CENTRE

Weekly Store Market to include Sale of Dairy Cattle & Fortnightly Pig Sale

MONDAY 11TH MAY – EXETER LIVESTOCK CENTRE

Weekly Prime Stock Market

TUESDAY 12TH MAY – EXETER LIVESTOCK CENTRE

Sale of Dairy Cattle

FRIDAY 15TH MAY – EXETER LIVESTOCK CENTRE

Weekly Store Market

MONDAY 18TH MAY – EXETER LIVESTOCK CENTRE

Weekly Prime Stock Market

Farms | Land | Smallholdings

Thinking of selling?

Kivells are at the heart of the farming community throughout the westcountry and beyond and have been selling farms, land and smallholdings since 1885.



Our tailor made service includes;

- ✓ Personal and confidential service
- ✓ Experienced team of Farm Agents
- ✓ Tailor made marketing plans across a variety of platforms
- ✓ Network of contacts within the farming community
- ✓ Added value with advice on Tax, Planning and Stewardship



In-house
bespoke
brochures



Over 40,000
followers on
Social Media



Millions of
page views on
kivells.com,
Rightmove
& Zoopa



Coverage in
national and
regional
publications

With 140 years of industry experience, we pride ourselves in providing friendly and professional advice on all aspects of selling your farm, land or smallholding.

Farms For Sale

KIVELLS

www.kivells.com

Puddaven Farm North Bovey, Newton Abbot

- Immaculate Farmhouse
- Stunning two bedroom Holiday Cottage
- Outbuildings and stabling
- Outdoor equine menage
- Well-maintained pasture land
- Versatile lifestyle property
- Far reaching views
- In all totalling approximately 32.35 acres (13.09 hectares)
- EPC: E & D

Guide Price: £1,800,000

Exeter Farms & Land Department
exeter@kivells.com | 01392 252262



Oxenpark Farm Hersham, Bude

- Wonderful setting with far reaching views over Bude Bay and the North Cornish coast.
- Three bedroom farmhouse and four further cottages
- Superb range of outbuildings suitable for a variety of uses
- In all about 16.18 acres with further land available by separate negotiation.
- Freehold
- Available as a whole or in three lots
- EPC: D, C, C, C & D

Lot 1: Three bedroom farmhouse, two holiday cottages, one further cottage and a lodge. Range of adaptable farm buildings, income generating wind turbine and just over 16 acres.

Guide Price: £1,395,000

Lot 2: A useful block of 45½ acres of pasture and arable land including 3 acres of mature woodland.

Guide Price: £515,000

Lot 3: A single gently sloping pasture field extending to 6.34 acres.

Guide Price: £85,000

Guide Price (as a whole): £1,995,000

Holsworthy Farms & Land Department
farms@kivells.com | 01409 259547



Trehere Farm Trewidland, Liskeard

- Substantial four bedroom (all en-suite) modern house enjoying extensive country views
- Range of buildings currently comprising a livery yard with potential for alternative uses
- Approximately 36.51 acres of pasture, amenity woodland and a sand school
- Wonderful rural location yet conveniently situated close to several villages and the town of Liskeard
- EPC: D

Guide Price: £995,000

Liskeard Farms & Land Department
mark.bunt@kivells.com | 01579 345543



Farms For Sale

KIVELLS

www.kivells.com

Barton Moor Meshaw, South Molton, Devon

- Three bedroom detached bungalow (AOC)
- Range of modern farm buildings with Class Q Permission for five dwellings
- Desirable and accessible location
- Freehold with vacant possession available
- In all about 4.22 acres
- EPC: 23 Band F

Guide Price: £495,000

Exeter Farms & Land Department
ben.hancock@kivells.com | 01392 252262



Farms For Sale

KIVELLS

www.kivells.com

Landabethick Blisland, Bodmin

- Charming, 6 bedroom detached farmhouse
- Excellent range of traditional farm buildings suitable for a variety of uses
- In all about 77 acres comprising a combination of good agricultural land and woodland
- Parking, garaging and workshop space
- Unrivalled, private position at the end of a private drive
- Freehold with vacant possession available
- EPC: D

Guide Price: £1,350,000

Exeter Farms & Land Department
ben.hancock@kivells.com | 01392 252262



Great Huish Farm Tedburn St. Mary Exeter

- Grade II Listed detached four bedroom house with three reception rooms
- Two further cottages providing income generation or multi-generation living
- Ring Fenced Farm
- Range of modern and traditional farm buildings
- Development opportunities with some planning consent in place
- Easy access to the A30 & M5
- In all about 8.92 acres of agricultural land with further land available by separate negotiation.
- EPC: C

Guide Price: £1,395,000

Exeter Farms & Land Department
exeter@kivells.com | 01392 252262



Farms For Sale

KIVELLS

www.kivells.com

West Burrow Farm Bratton Clovelly, Okehampton

A quietly set rural small holding offering huge potential.

- Grade II* Listed thatched farmhouse in need of modernisation.
- 3 beds, 2 receptions.
- Two adjoining traditional barns.
- Land and woodland
- EPC: Exempt as a listed property

Guide Price: £645,000

Holsworthy Farms & Land Department
farms@kivells.com | 01409 259547



Farms For Sale

KIVELLS

www.kivells.com

Fern Hill Farm Mount, Bodmin

- Farm with significant development potential
- Range of agricultural and equestrian buildings
- 60.29 acres of land including productive pasture
- Two bedroom lodge
- Planning for farm dwelling and residential caravan
- Located in a super rural location with far reaching valley views
- Freehold with vacant possession upon completion

Guide Price: £1,000,000

Liskeard Farms & Land Department
mark.bunt@kivells.com | 01579 345543



Development Site For Sale

KIVELLS

www.kivells.com

Development Site at Lower Newton Farm Zeal Monachorum, CREDITON, Devon

- Valuable residential development opportunity
- Range of agricultural buildings with planning permission for demolition and creation of three new build, detached four and three bedroom dwellings
- Potential under extension of Permitted Development Rights for retention and conversion of the existing buildings (Clarkson's Law – Maximum 10 dwellings), subject to planning
- Additional land available

Guide Price: £450,000

Exeter Farms & Land Department
simon.alford@kivells.com | 01392 252262



Aerial view looking north west

Farms For Auction

KIVELLS

www.kivells.com

Trefuge Bungalow Coads Green, Launceston, Cornwall

- For sale by Public Auction on Wednesday 22nd April, 7.00pm at Lifton Strawberry Fields, Lifton, Devon PL16 0DH
- Three bedroom bungalow of non traditional construction and in need of updating
- Set in just over 5 acres of gently sloping pasture
- Useful Nissen hut storage shed
- Lovely quiet rural setting with superb moorland views
- EPC = E (46)

Auction Guide Price: £250,000

Holsworthy Farms & Land Department
farms@kivells.com | 01409 259547



Land For Sale

KIVELLS

www.kivells.com

Land At Trevillies

St. Keyne, Liskeard | Guide Price £375,000 - £400,000



Approximately 45.64 acres of productive arable/pasture land and amenity woodland with mains water connected. Freehold with vacant possession upon completion.

Liskeard Farms & Land Department
mark.bunt@kivells.com | 01579 345543

Land at Stoke Canon

Exeter, Devon | Offers in Excess of £375,000

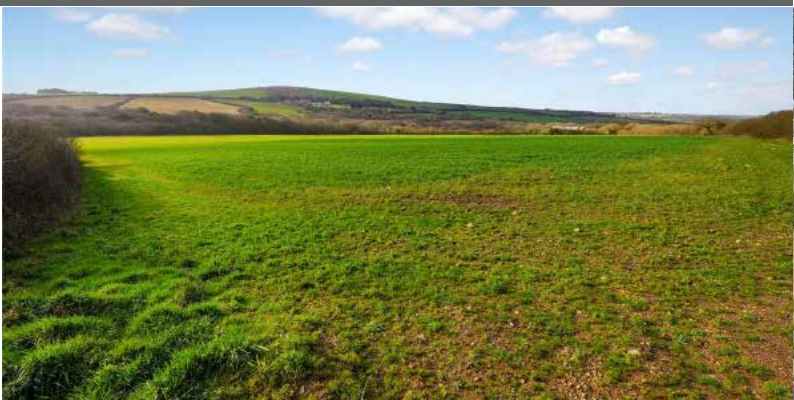


A highly productive run of level arable and pastureland with livestock handling pens extending to just under 46 acres.

Exeter Farms & Land Department
simon.alford@kivells.com | 01392 252262

Land at Criftoe Farm

Tregonetha | Guide Price £675,000 - £700,000



Approximately 64.98 acres of quality cropping land and amenity woodland and a useful modern farm building (with potential for alternative uses, subject to planning).

Liskeard Farms & Land Department
mark.bunt@kivells.com | 01579 345543

Land Off Yorke Road

Dartmouth | Guide Price £195,000



Approximately 12.26 acres in two separate field parcels both down to permanent grassland, previously grazed with livestock.

Exeter Farms & Land Department
exeter@kivells.com | 01392 252262

Land at Huxhill

Weare Giffard, Bideford | Guide Price £550,000



A productive run of good quality arable and pasture land in a favoured location extending to approximately 49.38 acres with two direct road access points.

Exeter Farms & Land Department
ben.hancock@kivells.com | 07760 887581

Land at Four Beeches Farm

Sourton, Okehampton | Guide Price £224,000



Approximately 26.25 acres of productive pasture land with easy access to the A386 and lovely rural views over Dartmoor. Suitable for amenity, equestrian and traditional farming.

Exeter Farms & Land Department
exeter@kivells.com | 01392 252262

Land For Sale

Land at Polskeys Farm

Roche, St. Austell | Guide Price £495,000



Approximately 59.18 acres of pasture and conservation land accessible off a quiet parish road with far reaching views, mains water connected, a useful livestock building and yard.

Liskeard Farms & Land Department
mark.bunt@kivells.com | 01579 345543

Land & Buildings at Horwood

Horwood, Bideford



A fantastic block of just over 166 ½ acres of productive arable land and a useful range of modern agricultural buildings. **Available in two lots.**

- **LOT 1:** Just over 132 acres of arable land with a range of modern and adaptable farm buildings. **Guide Price: £1,600,000**
- **LOT 2:** Circa 34 ½ acres of arable land in a single level field. **Guide Price: £400,000**

Holworthy Farms & Land Agency
farms@kivells.com | 01409 259547



Land at Tutchenor Farm Patchacott, Beaworthy

GRASS KEEP FOR SALE BY INFORMAL TENDER

- Approximately 86.7 acres available in three lots
- To cut and/or graze with sheep and cattle
- 1st May 2026 to 30th September with cattle, and on to 31st October 2026 with sheep
- Lot 1 - 19.69 acres
- Lot 2 - 28.52 acres
- Lot 3 - 38.49 acres
- Tenders to be submitted no later than 12 noon on Monday 20th April

Holsworthy Farms & Land Department
toby.theobald@kivells.com | 01409 253275

Land at Burridge Farm Tiverton

GRASS KEEP FOR SALE BY INFORMAL TENDER

- 138.23 acres available in three lots or as a whole
- Available from 1st May 2026 to 1st September 2026
- Lot 1: 43.48 Acres
- Lot 2: 40.37 Acres
- Lot 3: 57.38 Acres
- Tenders to be submitted no later than 12 noon on Thursday 23rd April



Exeter Farms & Land Department
josh.tilley@kivells.com | 07919 537457

Land for Auction

Wednesday 22nd April 7.00pm

Venue: Lifton Strawberry Fields, Lifton, Devon PL16 0DE

KIVELLS

www.kivells.com

Land at Higher Reedy Mill

Trewidland, Liskeard | Auction Guide Price £45,000 - £50,000
For sale by public auction - Wednesday 22nd April



Approximately 4.39 acres of sloping pasture land accessible off a quiet parish road. The land is likely to be of interest to those with agricultural, small holding, equestrian or general amenity interest.

Liskeard Farms & Land Agency
mark.bunt@kivells.com | 01579 345543

Land at Sladelands Farm

Botus Fleming, Saltash | Auction Guide Price £130,000 - £140,000
For sale by public auction - Wednesday 22nd April



Approximately 9.95 acres of pasture, amenity and woodland and a range of buildings currently providing a stable yard. The land is accessible off a quiet parish road, close to the village of Botus Fleming and has mains electricity and mains water available.

Liskeard Farms & Land Agency
mark.bunt@kivells.com | 01579 345543

Land lying north of The Pastures

Bratton Clovelly | Auction Guide Price £50,000 - £75,000
For sale by public auction - Wednesday 22nd April



Just over 2 acres of pasture land with lovely far reaching views, great for livestock grazing or as a pony paddock. Some long term potential, subject to gaining the necessary planning consents.

Holsworthy Farms & Land Agency
Farms@kivells.com | 01409 259547

Land & Buildings at Klymiarven

Tintagel | Auction Guide Price £175,000 - £195,000
For sale by public auction - Wednesday 22nd April



Approximately 13.25 acres of level pasture land with a small range of buildings and yard. The land is situated in a great location in the village and not far from the stunning North Cornish coast.

Holsworthy Farms & Land Agency
Farms@kivells.com | 01409 259547

Land at Quarry Hill

Petrockstow, Okehampton | Auction Guide Price £125,000 - £150,000
For sale by public auction - Wednesday 22nd April



A useful block of sheltered pasture land, gently sloping and level, extending to some 14.65 acres in all with road frontage.

Holsworthy Farms & Land Agency
Farms@kivells.com | 01409 259547

Land & Yard known as Tall Trees

Kit Hill, Callington | Auction Guide Price £25,000
For sale by public auction - Wednesday 22nd April



A great opportunity to acquire a yard, building and 1 1/4 acres in need of upgrading. Road frontage and good access.

Holsworthy Farms & Land Agency
Farms@kivells.com | 01409 259547

Land for Auction

Wednesday 22nd April 7.00pm

Venue: Lifton Strawberry Fields, Lifton, Devon PL16 0DE

KIVELLS

www.kivells.com

Land at Yonder Park

Ebberley, Torrington | Auction Guide Price £295,000 - £315,000
For sale by public auction - Wednesday 22nd April



A fantastic block of approximately 31.42 acres of arable land, divided in to four good sized fields and benefiting from good access from the adjoining parish road and far reaching countryside views.

Holsworthy Farms & Land Agency
Farms@kivells.com | 01409 259547

Land at Lower Wringworthy

Morval, Looe | Auction Guide Price £90,000 - £95,000
For sale by public auction - Wednesday 22nd April



Approximately 10.09 acres comprising two very gently sloping enclosures of permanent pasture accessible off a quiet parish road. There is some stock fencing noting the land has been used for livestock grazing and forage conservation purposes.

Liskeard Farms & Land Agency
mark.bunt@kivells.com | 01579 345543

Land at Kelynack

St. Just, Penzance | Auction Guide Price £130,000
For sale by public auction - Wednesday 22nd April



An excellent opportunity to purchase a 13.54 acre block of predominantly level agricultural land in a superb position, just inland from the West Cornish coastline.

Holsworthy Farms & Land Agency
Farms@kivells.com | 01409 259547

Land at Aller

Sampford Courtenay, Okehampton | Auction Guide Price £295,000
For sale by public auction - Wednesday 22nd April



A productive run of pasture land in a desirable and accessible location, in all about 34.64 acres. The land is currently laid to pasture and is divided into three enclosures.

Exeter Farms & Land Agency
Exeter@kivells.com | 01392 252262

Land at Four Beeches Farm

Sourton, Okehampton, | Auction Guide Price £215,000
For sale by public auction - Wednesday 22nd April



Approximately 26.25 acres of productive pasture land, suitable for amenity, equestrian and traditional farming, located within easy access to the A386.

Exeter Farms & Land Agency
Exeter@kivells.com | 01392 252262

Previous Auction Results

Wednesday 25th March, 7.00pm

KIVELLS

www.kivells.com

Land at Crylla Farm

Common Moor, Liskeard | Auction Guide Price £275,000 - £285,000
SOLD: £310,000



Approximately 30.81 acres of gently sloping pasture land situated overlooking Siblyback Lake, enjoying extensive views and benefiting from a natural water supply.

Liskeard Farms & Land Agency
mark.bunt@kivells.com | 01579 345543

Land off New Road

Liskeard | Auction Guide Price £15,000 - £20,000
SOLD: £27,000



Approximately 1.63 acres of gently sloping amenity land situated close to New Road, on the periphery of the town of Liskeard and accessible off a main road, leading to a parish road.

Liskeard Farms & Land Agency
mark.bunt@kivells.com | 01579 345543

Farms Sale Agreed

KIVELLS

www.kivells.com

Keymelford Farm Buildings & Land Keymelford, Colebrook, Crediton, Devon



Lot 1 - Agricultural buildings and yard area with land surrounding extending to 0.41 acres.
Guide Price: £150,000

Lot 2 - Agricultural building with concrete pad and land surrounding extending to 0.41 acres.
Guide Price: £135,000

Lot 3 - A small grassland area extending to approximately 0.14 acres. **Guide Price: £25,000**

Exeter Farms & Land Agency
exeter@kivells.com | 01392 252262

Tor Court Farm Torbryan, Newton Abbot



- Four bedroom, Grade II Listed farmhouse
- Stone barns and a modern agricultural building with potential for alternative uses (stp)
- A truly hidden gem located in a peaceful yet accessible location
- Stunning, well-maintained pasture, orchards and woodland
- In all approximately 67.43 acres (27.28 hectares)

Guide Price: £1,210,000

Exeter Farms & Land Department
ian.caunter@kivells.com | 01392 252262

Farms Sale Agreed

KIVELLS

www.kivells.com

Sandenbury
Tregadillett, Launceston



- Smallholding in a lovely rural, yet accessible location
- Three bedroom bungalow (AOC) in need of modernising
- Range of pole barns
- Just over 40 acres of pasture land including some woodland
- A fantastic blank canvas
- EPC: D

Guide Price: £650,000

Holworthy Farms & Land Department
farms@kivells.com | 01409 259547

Higher Norley Farm
Northlew, Okehampton



- Just over 93 acres of productive pasture land
- A useful range of farm buildings including 96 cubicles, loose housing, fodder store and workshop
- Wonderful far reaching views to Dartmoor
- For sale by Private Treaty

Guide Price: £1,100,000

Holworthy Farms & Land Department
farms@kivells.com | 01409 259547

Farms Sale Agreed

KIVELLS

www.kivells.com

Tregaminion Manor Farm Morvah, Pendeen, Penzance



- Idyllic coastal setting
- Ring fenced farm in an Area of Outstanding Natural Beauty
- Multiple dwellings for income generation or multi-generational living
- Period farmhouse and two cottages
- Range of modern and traditional farm buildings
- Development opportunities with some planning consent in place
- In all some 118 acres
- EPC C, G & G.

Guide Price: £2,500,000

Holworthy Farms & Land Department
farms@kivells.com | 01409 259547

Trelissick Farm Sithney, Helston



In a beautiful sheltered setting, an 85 acre stock farm. For sale as a whole or in the following lots.

LOT 1: Farmhouse, range of modern livestock and storage buildings, traditional stone barns (some with planning for residential development), set in just over 28 acres of land. EPC: E. **Guide Price: £1,300,000**

LOT 2: A super run of gently sloping pasture land extending to some 43½ acres. **Guide Price: £375,000**

LOT 3: Just over 14 acres and a former waterworks building with planning in principal for a dwelling. **Guide Price: £290,000**

Holworthy Farms & Land Department
farms@kivells.com | 01409 259547

Farms Sale Agreed

KIVELLS

www.kivells.com

Sensham Farm Marhamchurch, Bude



- Substantial modern farmhouse and separate first floor flat, both in need of modernisation
- Range of adaptable farm buildings with stabling
- Set in some 57 acres
- Not far from the North Cornish coast
- EPCs: D and F

Guide Price: £1,600,000

Holsworthy Farms & Land Department
farms@kivells.com | 01409 259547

Pinelands Farm Highampton, Beaworthy



- Charming lifestyle farm with a three bedroom, newly renovated and extended bungalow
- Superb range of traditional and modern outbuildings
- Productive pasture with pockets of woodland extending to just over 56 acres
- Secluded yet convenient location
- EPC: D

Guide Price: £845,000

Holsworthy Farms & Land Department
farms@kivells.com | 01409 259547

Farms Sale Agreed

KIVELLS

www.kivells.com

East Coombe Farm
St. Pinnock, Liskeard



- Three bedroom, two bathroom, three reception room character detached house
- Splendid private location, with far reaching rural views
- Outbuildings with significant potential for alternative uses
- Located in rural East Cornwall between the wide expanses of Bodmin Moor and the South Cornish coastline
- In all 45.50 acres of land and woodland
- EPC: E & D

Guide Price: £900,000

Liskeard Farms & Land Department
liskeard@kivells.com | 01579 345543

Land Sale Agreed

KIVELLS

www.kivells.com

Land off Blackacre Lane

St Columb | Guide Price £150,000 - £155,000



Approx 12.87 acres comprising a single enclosure of gently sloping land currently in a temporary ley, although in recent years has been used for arable and vegetable growing purposes.
Liskeard Farms & Land Agency
mark.bunt@kivells.com | 01579 345543

Land at Viverdon Down

St. Mellion, Saltash | Guide Price £465,000



Just under 45 acres of productive pasture land in a very accessible location with lovely far reaching views.

Holsworthy Farms & Land Agency
farms@kivells.com | 01409 259547

Land at St. Issey (LOT 1)

Wadebridge | Guide Price £470,000



Extending to a total of 39.74 acres, lot one comprises a productive block of Grade 3 pasture land, in five enclosures.
Exeter Farms & Land Agency
exeter@kivells.com | 01392 252262

Land at St. Issey (LOT 2)

Wadebridge | Guide Price £450,000



A productive block of farmland totalling 38.87 acres, contained within a ring fence of six enclosures.

Exeter Farms & Land Agency
exeter@kivells.com | 01392 252262

Land at Upton Farm (Lot 1)

Delabole | Guide Price £500,000



Approx. 39.59 acres comprising a ring fence block of level or very gently sloping land currently in arable and temporary pastures contained in large, easy working, enclosures.

Liskeard Farms & Land Department
mark.bunt@kivells.com | 01579 345543

Land at Upton Farm (Lot 2)

Delabole | Guide Price £1,105,000



Approx. 88.25 acres comprising a block of level or very gently sloping land currently in arable and temporary pastures, mostly contained in large, easy working, enclosures.

Liskeard Farms & Land Department
mark.bunt@kivells.com | 01579 345543

Land Sale Agreed

KIVELLS

www.kivells.com

Land forming Part Oldsbrim (Lot 1) Poundsgate, Newton Abbot | Guide Price £150,000



Approximately 26.19 acres incorporating a block of well presented permanent grassland together with areas of rough grazing.

Exeter Farms & Land Department
ian.caunter@kivells.com | 01392 252262

Land forming Part Oldsbrim (Lot 2) Poundsgate, Newton Abbot | Guide Price £75,000



Approximately 12.62 acres incorporating three immaculate field parcels down to permanent pasture. A single access point is available from the north.

Exeter Farms & Land Department
ian.caunter@kivells.com | 01392 252262

Land at Chudleighs Barn Holding Liskeard | Guide Price £100,000 - £125,000



Approximately 20.19 acres of pasture and amenity land with pretty stream frontage and some woodland included.

Liskeard Farms & Land Department
mark.bunt@kivells.com | 01579 345543

Solar Park & Land at Gammaton Bideford

- Two solar parks with RPI linked, long-term leases
- Substantial income
- Excellent road frontage with good internal access via a well established track network
- 21.55 acres of quality pastureland in addition to the solar
- In all about 109.9 acres combining solar and pastureland

Guide Price: £1,950,000

Exeter Farms & Land Department
ben.hancock@kivells.com | 07760 887581



Tregovenek Bungalow, Attwood Lane, Pensilva, Liskeard, Cornwall PL14 5QU

Kivells have been instructed to market Tregovenek, a detached three/four bedroom bungalow in a quiet rural location, close to the village of Bolventor, with good size outside space. The bungalow is subject to an Agricultural Occupancy Condition.

Enquiries to W M Bunt BSc MRICS FAAV, Kivells, 7-8 Bay Tree Hill, Liskeard,
Cornwall PL14 4BE

Tel: 01579 345543 or 07879 640970. Email: mark.bunt@kivells.com.