

## HALLWORTHY MARKET REPORT



**THURSDAY 11<sup>th</sup> JUNE 2026**

**EVERY THURSDAY**

**Gates Open 6.30am**

**SALE TIMES**

- |                 |   |
|-----------------|---|
| <b>09:45 am</b> | Draft Ewes followed by Prime, Store Hogs & Breeding Sheep |
| <b>10:45am</b>  | Tested & Untested Prime & OTM Cattle                      |
| <b>11:00 am</b> | Store Cattle followed by Stirks and Weaned Calves         |

Hallworthy Stockyard, Hallworthy, Camelford, Cornwall, PL32 9SH

Tel: 01840 261261 Fax: 01840 261684

Website: [www.kivells.com](http://www.kivells.com)

Email: [hallworthy@kivells.com](mailto:hallworthy@kivells.com)

## SHEEP

**AUCTIONEER – STEVE PROUSE 07767 895366**

**FIELDSMAN – RYAN WALTER 07854 718886**

### 364 DRAFT EWES

A good entry met a mixed trade with the lean and  $\frac{3}{4}$  meat Ewes meeting the strongest trade and the thick fat Ewes harder to place. Top price on the day was £230 for Texels from R Gregory of Kerling, Truro who also topped the Suffolks at £190, Dorset x Ewes to £186 from TL Ford & Son of Tregingey Farm, Wadebridge. Mules to £176 from Henry Pedlar of Beacon Farm, St Wenn. Hill Bred Ewes to £144 for Cheviots from W & R Pethick of Trevalga, Boscastle.

### 618 PRIME LAMBS

The lamb trade nationally has started to slip but for the time of year the trade is still very strong. The well fleshed lambs selling to a premium, top per kilo being 449p for a pen of Texel x 41.2kgs, £185 from David Broad of Davina, Tintagel.

Colin Burrow of Trelay, Welcombe realised 442p for his 42.4kgs, £187.50, followed by 441p for a pen of 42.4kgs, £187 from Paul Taylor of Roche. There was five producers who realised 440ppkilo. Heavies topped at £200 sold by the Stephens Family of Burscott, Holsworthy, who also made £199 for their second pen.

| Weight         | Top      |        | Average  |        |
|----------------|----------|--------|----------|--------|
|                | Per Head | Per KG | Per Head | Per KG |
| 32.1-39        | 170      | 438    | 158      | 429.4  |
| 39.1-45.5      | 191      | 449    | 180.5    | 420.3  |
| 45.6-52        | 200      | 421    | 190.6    | 401.8  |
| <b>Overall</b> | 200      | 449    | 184.9    | 422.9  |



**Penbode**  
Farm Vets

Competitively priced farm medicines  
Dairy and beef fertility clubs  
24/7/365 veterinary cover

Livestock fertility testing and advice  
VetTech services  
In house labs and lambing bays

[www.penbodevets.co.uk](http://www.penbodevets.co.uk)  
Holsworthy | Bradworthy | Stratton | Launceston | Camelford

**STORE CATTLE**  
**AUCTIONEER – RICHARD DENNIS**  
**FIELDSMAN – STUART CORNELIUS 07879 415136**

Back with a bang after the Royal Cornwall Show with nearly 400 Cattle penned between both departments. Trade for all grades and breeds took a noticeable lift with a large number of travelled buyers ring side. A credit to all vendors saw quality throughout the Store section.

**Older Cattle-** AR Hooper & Son of Bude presented their usual quality and topped the market with his 23 month old powerful Charolais Steers parting at £2350, £2290, £2280, £2190 and £2100, further strong Charolais Steers drew £2130 for a single two year old in from DT Barrand up from Tehidy. 26 month old South Devon Steers parted at £2040 for CW Crocker of Crackington Haven, followed by a grand bunch of forward Angus Steers which drew £1980 (22m) for AR Hooper & Son again, who sold similar aged Herefords to £1980 and £1900. Limousin Steers saw £1850 (21m) for JM Dawe of Port Issac. Forward Charolais Heifers drew £1930 and £1890 for AR Hooper & Son, who sold their meat Herefords to £1850 (22m) and Angus at £1800 (20m). Best South Devon Heifers achieved £1910 (25m) for CW Crocker who had others to £1860 and £1810.

**Younger Cattle-** The younger cattle seeing large interest and a really sharp trade with 12 month old South Devon Steers to £1820 for CW Crocker, 11 month old Limousin Steers also to £1820 for TL Ford & Son of Wadebridge, whilst CP Button LTD of St Tudy saw his best Limousin Steers hit £1750 and £1700 (only 9-13 months old). 8 month old Limousin Heifers were a highlight in this section at a mega £1600 in from TL Ford & Son, followed by 13 month old Charolais Heifers which sold well to £1500 and £1490 for AC Halls of Altarnun. Best yearling Limousin Heifers to £1460 for Des May of Tintagel, others to £1200 (11m) for NM Sanders of Camelford, further good Charolais Heifers hit £1400 (15m) for DT Barrand.

**Cows –** A beautiful pedigree Limousin Cow made £2200 (57m) for WT Key and Sons of Wadebridge.



**Charolais Steer at 18-months-old  
to £2280**



**Limousin Steer at 11-months-old  
to £1630**

**153 STIRKS**  
**AUCTIONEER – TIM KIVELL**

An outstanding quality entry saw all 153 Stirks average a record breaking £1103 per head. Highlight of the day was 7 month old Limousin Steers to £1430 and £1370 for CP Button LTD of St Tudy, the Warman Family Partnership saw their 9 month old Limousin Steers part at £1250 and £1200, with all 28 Limousin Steers in the Stirks averaging £1207/head. Well framed 6 month old Blue Steers to £1300 and £1200 for Roger Kempthorne & Partners of St Tudy, £1265 (9m) for Richard Drew of Bude who had others to £1180, with all 20 Blue Steers averaging £1182/head. Richard Drew's Simmental Steers also achieved £1180 (9m). A super run of Angus Steers drew £1230 and £1120 for the Warman Family Partnership, others to £1210 (9m) for CP Button LTD and £1200 for Pete Best of St Newly East. Hereford Steers to £1080 and £1030 for Pete Best again. Stirk Heifers reached £1300, £1250 and £1120 for three pens of eye catching 9 month old Limousin Heifers in from CP Button again, other Limousin Heifers to £1060 and £1000 for the Warman Family Partnership. Young but sweet Blue Heifers attained £1050 and £1010 for Roger Kempthorn and Partners and £920 for Richard Drew. Angus Heifers hit £1125 for Pete Best, others to £1100 for Warman Family Partnership.



**6-month-old Blue stirks to £1300**

**KIVELLS**  
www.kivells.com

**Rural Professional Matters - Toby Theobald**  
At Hallworthy Market every Thursday

All Rural Professional work able to be supported with, including:

Valuations | Environmental Stewardship | Licences and Tenancies  
Compensation Claims | Land Registry Compliant Mapping

  
Toby Theobald  
01409 253275 | toby.theobald@kivells.com

# Farms For Sale

# KIVELLS

[www.kivells.com](http://www.kivells.com)

## Oxenpark Farm Hersham, Bude

- Wonderful setting with far reaching views over Bude Bay and the North Cornish coast.
- Three bedroom farmhouse and four further cottages
- Superb range of outbuildings suitable for a variety of uses
- In all about 16.18 acres with further land available by separate negotiation.
- Freehold
- Available as a whole or in three lots
- EPC: D, C, C, C & D

**Lot 1:** Three bedroom farmhouse, two holiday cottages, one further cottage and a lodge. Range of adaptable farm buildings, income generating wind turbine and just over 16 acres.  
Guide Price: £1,395,000

**Lot 2:** A useful block of 45½ acres of pasture and arable land including 3 acres of mature woodland.  
Guide Price: £515,000

**Lot 3:** A single gently sloping pasture field extending to 6.34 acres.  
Guide Price: £85,000

**Guide Price (as a whole): £1,995,000**

**Holsworthy Farms & Land Department**  
[farms@kivells.com](mailto:farms@kivells.com) | 01409 259547



# Farms For Sale

# KIVELLS

[www.kivells.com](http://www.kivells.com)

## Vennbrook Varley Farm, PRIXFORD, Barnstaple

- 100 acre residential and stock farm
- Attractive, well proportioned bungalow (AOC)
- Useful range of livestock and storage buildings
- Ring fenced pasture land
- Superb views
- EPC C [77]

**Guide Price: £1,800,000**

**Holsworthy Farms & Land Department**  
[farms@kivells.com](mailto:farms@kivells.com) | 01409 259547



# Farms For Sale

# KIVELLS

[www.kivells.com](http://www.kivells.com)

## Puddaven Farm North Bovey, Newton Abbot

- Immaculate Farmhouse
- Stunning two bedroom Holiday Cottage
- Outbuildings and stabling
- Outdoor equine menage
- Well-maintained pasture land
- Versatile lifestyle property
- Far reaching views
- In all totalling approximately 32.35 acres (13.09 hectares)
- EPC: E & D

**Guide Price: £1,695,000**

**Exeter Farms & Land Department**  
[exeter@kivells.com](mailto:exeter@kivells.com) | 01392 252262



# Farms For Sale

# KIVELLS

[www.kivells.com](http://www.kivells.com)

## Landabethick Blisland, Bodmin

- Charming, 6 bedroom detached farmhouse
- Excellent range of traditional farm buildings suitable for a variety of uses
- In all about 77 acres comprising a combination of good agricultural land and woodland
- Parking, garaging and workshop space
- Unrivalled, private position at the end of a private drive
- Freehold with vacant possession available
- EPC: D

**Guide Price: £1,350,000**

**Exeter Farms & Land Department**  
[exeter@kivells.com](mailto:exeter@kivells.com) | 01392 252262



# Farms For Sale

# KIVELLS

[www.kivells.com](http://www.kivells.com)

## North Hayne Farm Shillingford, Tiverton

- Attractive and spacious five bedroom farmhouse with extensive living accommodation
- Superb range of traditional outbuildings with potential (STP)
- Productive pastureland, woodland and river access
- In all about 37.36 acres
- Freehold with vacant possession available
- EPC: F

**Guide Price: £1,075,000**

**Exeter Farms & Land Department**  
[exeter@kivells.com](mailto:exeter@kivells.com) | 01392 252262



# Farms For Sale

# KIVELLS

[www.kivells.com](http://www.kivells.com)

## Fern Hill Farm Mount, Bodmin

- Farm with significant development potential
- Range of agricultural and equestrian buildings
- 60.29 acres of land including productive pasture
- Two bedroom lodge
- Planning for farm dwelling and residential caravan
- Located in a super rural location with far reaching valley views
- Freehold with vacant possession upon completion

**Guide Price: £1,000,000**

**Liskeard Farms & Land Department**  
[mark.bunt@kivells.com](mailto:mark.bunt@kivells.com) | 01579 345543



# Farms For Sale

# KIVELLS

[www.kivells.com](http://www.kivells.com)

## Trehere Farm Trewidland, Liskeard

- Substantial four bedroom (all en-suite) modern house enjoying extensive country views
- Range of buildings currently comprising a livery yard with potential for alternative uses
- Approximately 36.51 acres of pasture, amenity woodland and a sand school
- Wonderful rural location yet conveniently situated close to several villages and the town of Liskeard
- EPC: D

**Guide Price: £995,000**

**Liskeard Farms & Land Department**  
[mark.bunt@kivells.com](mailto:mark.bunt@kivells.com) | 01579 345543



## Rolstone Bungalow Morchard Bishop, Crediton

- A wonderfully presented and immaculate four bedroom Bungalow, subject to an Agricultural Occupancy Condition (AOC)
- Adjacent Workshop and Office Unit
- A useful Agricultural Building
- Well maintained productive Pasture Land
- In all totalling approximately 10.74 acres (4.34 hectares)
- EPC: C

**Guide Price: £925,000**

**Exeter Farms & Land Department**  
[exeter@kivells.com](mailto:exeter@kivells.com) | 01392 252262



# Farms For Sale

# KIVELLS

[www.kivells.com](http://www.kivells.com)

## Holdstrong Farmhouse Coryton, Okehampton

- A delightful 5 bedroom 17th Century Devon Longhouse
- Situated in a beautiful rural setting on the edge of the Dartmoor National Park
- Superb views
- Stabling and further outbuildings
- Pond
- Coppice
- In all about 15.87 acres
- Freehold with vacant possession available
- EPC: E

**Guide Price: £850,000**

Exeter Farms & Land Department  
[exeter@kivells.com](mailto:exeter@kivells.com) | 01392 252262



# Farms For Sale

# KIVELLS

[www.kivells.com](http://www.kivells.com)

## Southmoor Farm Winnards Perch, St Columb

- A superbly presented residential farm in a sought-after North Cornish location
- Well presented, five bedroom detached property in fantastic condition
- Versatile outbuildings
- Productive pasture and woodland
- Sought after location with easy access to the North Cornish coastline
- In all about 33.54 acres
- EPC E [50]

**Guide Price: £825,000**

Holsworthy Farms & Land Department  
[farms@kivells.com](mailto:farms@kivells.com) | 01409 259547



# Farms For Sale

# KIVELLS

[www.kivells.com](http://www.kivells.com)

## West Burrow Farm Bratton Clovelly, Okehampton

A quietly set rural small holding offering huge potential.

- Grade II\* Listed thatched farmhouse in need of modernisation.
- 3 beds, 2 receptions.
- Two adjoining traditional barns.
- Land and woodland
- EPC: Exempt as a listed property

Guide Price: £645,000

Holsworthy Farms & Land Department  
[farms@kivells.com](mailto:farms@kivells.com) | 01409 259547



# Development Site For Sale

# KIVELLS

[www.kivells.com](http://www.kivells.com)

## Development Site at Lower Newton Farm Zeal Monachorum, Crediton, Devon

- Valuable residential development opportunity
- Range of agricultural buildings with planning permission for demolition and creation of three new build, detached four and three bedroom dwellings
- Potential under extension of Permitted Development Rights for retention and conversion of the existing buildings (Clarkson's Law - Maximum 10 dwellings), subject to planning
- Additional land available

Guide Price: £450,000

Exeter Farms & Land Department  
[simon.alford@kivells.com](mailto:simon.alford@kivells.com) | 01392 252262



Aerial view looking north west

# Farms For Auction

# KIVELLS

[www.kivells.com](http://www.kivells.com)

## North Kestle Tregadillett, Launceston

For Sale by Public Auction on Wednesday 24th June, 7.00pm at Lifton Strawberry Fields, Lifton, Devon, PL16 0DH.

- A charming rural small holding with a substantial farmhouse
- In need of renovation
- Range of outbuildings including some stone barns
- 4.78 acres

**Guide Price: £375,000**

**Holsworthy Farms & Land Department**  
[farms@kivells.com](mailto:farms@kivells.com) | 01409 259547



# Land For Sale

# KIVELLS

[www.kivells.com](http://www.kivells.com)

## Land At Trevillies

St. Keyne, Liskeard | Guide Price £375,000 -



Approximately 45.64 acres of productive arable/pasture land and amenity woodland with mains water connected. Freehold with vacant possession upon completion.

Liskeard Farms & Land Department  
[mark.bunt@kivells.com](mailto:mark.bunt@kivells.com) | 01579 345543

## Land at Stoke Canon

Exeter, Devon | Offers in Excess of £375,000

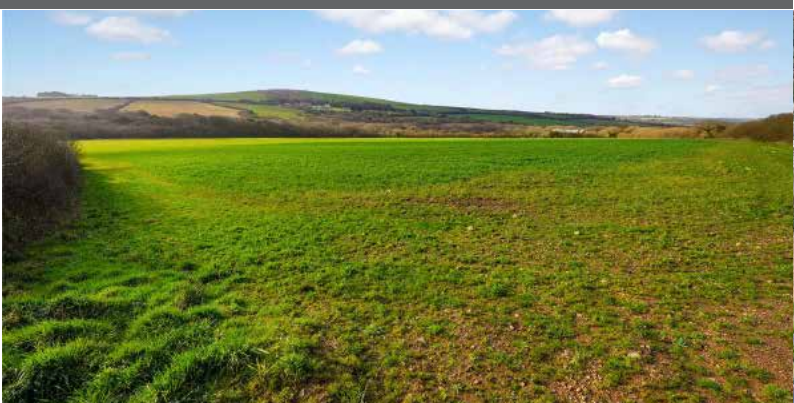


A highly productive run of level arable and pastureland with livestock handling pens extending to just under 46 acres.

Exeter Farms & Land Department  
[simon.alford@kivells.com](mailto:simon.alford@kivells.com) | 01392 252262

## Land at Criftoe Farm

Tregonetha | Guide Price £675,000 - £700,000



Approximately 64.98 acres of quality cropping land and amenity woodland and a useful modern farm building (with potential for alternative uses, subject to planning).

Liskeard Farms & Land Department  
[mark.bunt@kivells.com](mailto:mark.bunt@kivells.com) | 01579 345543

## Land Off Yorke Road

Dartmouth | Guide Price £195,000



Approximately 12.26 acres in two separate field parcels both down to permanent grassland, previously grazed with livestock.

Exeter Farms & Land Department  
[exeter@kivells.com](mailto:exeter@kivells.com) | 01392 252262

## Land at Polskeys Farm

Roche, St. Austell | Guide Price £495,000



Approximately 59.18 acres of pasture and conservation land accessible off a quiet parish road with mains water connected, a useful livestock building and yard.

Liskeard Farms & Land Department  
[mark.bunt@kivells.com](mailto:mark.bunt@kivells.com) | 01579 345543

## Land at Four Beeches Farm

Sourton, Okehampton | Guide Price £224,000



Approximately 26.25 acres of productive pasture land with easy access to the A386. Suitable for amenity, equestrian and traditional farming.

Exeter Farms & Land Department  
[exeter@kivells.com](mailto:exeter@kivells.com) | 01392 252262

## Land at Higher Reedy Mill

Trewidland, Liskeard | Guide Price £50,000



Approximately 4.39 acres of pasture land, accessible off a quiet parish road close to the village of Trewidland in a quiet rural location with far reaching views.

Liskeard Farms & Land Department  
[mark.bunt@kivells.com](mailto:mark.bunt@kivells.com) | 01579 345543

## Land at Lidburn Hill

Tedburn St Mary, Exeter | Guide Price £100,000



An attractive south facing arable field extending to approximately 8.95 acres suited for farming, conservation or amenity uses. For sale as a whole.

Exeter Farms & Land Department  
[exeter@kivells.com](mailto:exeter@kivells.com) | 01392 252262

## Land forming part Home Park

Ipplepen, Newton Abbot | Guide Price £250,000



Approximately 17.57 acres providing an area of secluded pastureland and woodland. The land is well suited for conservation or amenity use.

Exeter Farms & Land Department  
[exeter@kivells.com](mailto:exeter@kivells.com) | 01392 252262

## Land & Buildings at Horwood

Horwood, Bideford



Just over 166 ½ acres of productive arable land and a useful range of modern agricultural buildings.

- **LOT 1:** Just over 132 acres of arable land with a range of modern farm buildings. **Guide Price: £1,600,000**
- **LOT 2:** Circa 34 ½ acres of arable land in a single level field. **Guide Price: £400,000**

Holsworthy Farms & Land Agency  
[farms@kivells.com](mailto:farms@kivells.com) | 01409 259547

## Land at Crylla

Minions, Liskeard



Extending to approximately 141.40 acres in all, the land at Crylla comprises a completely ring-fenced block of predominantly level agricultural land, divided into a number of useful-sized enclosures and enclosed by traditional stone walls. The land is currently utilised for the grazing of livestock and offers an excellent opportunity for continued agricultural use, with practical sized parcels well suited to grazing and general stock management.

Guide Price: £1,400,000

Holsworthy Farms & Land Agency  
[farms@kivells.com](mailto:farms@kivells.com) | 01409 259547

## Land and buildings Mucksey Lane

Exbourne, Okehampton



A unique development opportunity sat within 27.85 acres of Grade 2 arable land with river frontage. Full planning permission has been granted for the demolition of the existing building and the construction of a substantial four-bedroom dwelling. Further details can be found on the West Devon Borough Council planning portal under reference 3424/25/FUL.

Guide Price: £475,000

Exeter Farms & Land Agency  
[ben.hancock@kivells.com](mailto:ben.hancock@kivells.com) | 07760 887581

## Land located at Wrigwell

Bickington, Newton Abbot



A fantastic block of productive arable land, well located and with excellent road access. Located just 2 miles east of the A38 Devon Expressway and bordered by the river Lemon, the land is suited for farming, conservation or amenity uses. **Available as a whole or in three lots.**

- **LOT 1:** Approximately 28.59 acres forming a single large field parcel with direct access to the public highway from the north. **Guide Price: £315,000**
- **LOT 2:** Approximately 9.19 acres forming a single gently sloping parcel. Access to the field is available from the south or north directly off the public highway. **Guide Price: £100,000**
- **LOT 3:** Approximately 7.19 acres and comprises of a level field parcel with the River Lemon forming the parcels northern edge. Access is available to the west directly off the public highway. **Guide Price: £85,000**
- **As a whole:** Approximately 44.97 acres of productive arable land. **Guide Price: £500,000**

Exeter Farms & Land Agency  
exeter@kivells.com | 01392 252262

# Land & Buildings For Rent

GENERAL PURPOSE BUILDING TO LET  
Stourscombe, Launceston | £595 pcm



A new 45' x 30' shed at Stourscombe near Launceston, with great access to A30/A388. Ideal for storage.

Thomas Rattray  
thomas.rattray@kivells.com | 07813 016804

# Land for Auction

## Wednesday 24th June, 7.00pm

Venue: Lifton Strawberry Fields, Lifton, Devon PL16 0DE

# KIVELLS

[www.kivells.com](http://www.kivells.com)

### Land at Liftdown

Liftdown, Lifton | Auction Guide Price £75,000  
For sale by public auction - Wednesday 24th June



Extending to some 7.87 acres the land at Liftdown is contained within a gently sloping single enclosure which is all down to permanent pasture.

Holsworthy Farms & Land Agency  
[Farms@kivells.com](mailto:Farms@kivells.com) | 01409 259547

### Land at St Keyne

Liskeard | Auction Guide Price £5,000 - £10,000  
For sale by public auction - Wednesday 24th June



Approximately 0.40 acres of woodland and amenity land accessible off a quiet parish road, in a picturesque valley location with a woodland stream running through.

Liskeard Farms & Land Agency  
[mark.bunt@kivells.com](mailto:mark.bunt@kivells.com) | 01579 345543

### Freehold Amenity Land

Tremeale, Daws House | Auction Guide Price £15,000  
For sale by public auction - Wednesday 24th June



Parcel of Freehold amenity land extending to approximately 4,225 sq ft with a stone building offering huge potential, subject to necessary building consents, and a swimming pool beneath the mature shrubs.

Launceston Estate Agents  
[Launceston@kivells.com](mailto:Launceston@kivells.com) | 01566 777777

### Land at Spring Lodge

Eastcott, Bude | Auction Guide Price £250,000  
For sale by public auction - Wednesday 24th June



Versatile parcel of approximately 31 acres of gently sloping land with sea views and boasting a well stocked fishing lake, 5 acres of woodland and a steel framed open barn.

Bude Estate Agents  
[Bude@kivells.com](mailto:Bude@kivells.com) | 01288 359999

### Land at Woolladon

Meeth, Okehampton | Auction Guide Price £130,000  
For sale by public auction - Wednesday 24th June



Approximately 17.90 acres of pasture land together with a wooded copse area, arranged in two useful enclosures and well suited to a range of uses.

Exeter Farms & Land Agency  
[Exeter@kivells.com](mailto:Exeter@kivells.com) | 01392 252262

## 2026 Auction Dates

Wednesday 24th June  
Wednesday 29th July  
Wednesday 2nd September  
Wednesday 7th October  
Wednesday 11th November  
Wednesday 9th December



Thinking of selling by auction? Contact our experienced team today for a **FREE** no obligation auction appraisal.  
[www.kivells.com](http://www.kivells.com)

# Previous Auction Results

Wednesday 27th May, 7.00pm

# KIVELLS

[www.kivells.com](http://www.kivells.com)

## Penloe Field

Woolley, Bude | Auction Guide Price £65,000 - £75,000  
SOLD: £75,000



Approximately 5.59 acres in a quiet rural setting with lovely views and a useful open sided storage building - 27' x 15' (8.23m x 4.57m) with a rain water harvest tank to one side.

[Holsworthy Farms & Land Agency](http://Holsworthy Farms & Land Agency)  
[Farms@kivells.com](mailto:Farms@kivells.com) | 01409 259547

## Land at Ugworthy

Chilsworthy, Holsworthy | Auction Guide Price £45,000 - £50,000  
SOLD: £50,000



Extending to some 5.67 acres, the Land at Ugworthy comprises a mainly level pasture field with natural hedge bank boundaries and a small corrugated sheet clad shed (in poor repair) and an ancient burial ground.

[Holsworthy Farms & Land Agency](http://Holsworthy Farms & Land Agency)  
[Farms@kivells.com](mailto:Farms@kivells.com) | 01409 259547

## Land at Milton Damerel

Holsworthy | Auction Guide Price £20,000  
SOLD: £34,000



This pretty 2.42 acre field comprises a mainly level paddock which benefits from excellent access from the adjoining main road on its northern boundary. The land would be suitable for amenity purposes, keeping livestock or ponies.

[Holsworthy Farms & Land Agency](http://Holsworthy Farms & Land Agency)  
[Farms@kivells.com](mailto:Farms@kivells.com) | 01409 259547

## Land at Furzedon Field

Trewidland, Liskeard | Auction Guide Price £110,000 - £115,000  
SOLD: £115,000



Approximately 13.80 acres of pasture land in a ring fence block with a woodland stream boundary and fringe and mains water connected to three troughs.

[Liskeard Farms & Land Agency](http://Liskeard Farms & Land Agency)  
[mark.bunt@kivells.com](mailto:mark.bunt@kivells.com) | 01579 345543

## Land West of Wainhouse Corner

St. Gennys, Bude | Auction Guide Price £140,000 - £150,000  
SOLD: £140,000



A useful block of just over 15.5 acres of pasture land, with excellent access from the adjoining main road. The land is very gently sloping and extremely well fenced.

[Holsworthy Farms & Land Agency](http://Holsworthy Farms & Land Agency)  
[Farms@kivells.com](mailto:Farms@kivells.com) | 01409 259547

# Farms Sale Agreed

# KIVELLS

www.kivells.com

## Keymelford Farm Buildings & Land Keymelford, Colebrook, Crediton, Devon



**Lot 1** - Agricultural buildings and yard area with land surrounding extending to 0.41 acres.  
**Guide Price: £150,000**

**Lot 2** - Agricultural building with concrete pad and land surrounding extending to 0.41 acres.  
**Guide Price: £135,000**

**Lot 3** - A small grassland area extending to approximately 0.14 acres. **Guide Price: £25,000**

**Exeter Farms & Land Agency**  
exeter@kivells.com | 01392 252262

## Tor Court Farm Torbryan, Newton Abbot



- Four bedroom, Grade II Listed farmhouse
- Stone barns and a modern agricultural building with potential for alternative uses (stp)
- A truly hidden gem located in a peaceful yet accessible location
- Stunning, well-maintained pasture, orchards and woodland
- In all approximately 67.43 acres (27.28 hectares)

**Guide Price: £1,210,000**

**Exeter Farms & Land Department**  
ian.caunter@kivells.com | 01392 252262

# Farms Sale Agreed

# KIVELLS

[www.kivells.com](http://www.kivells.com)

**Sandenbury**  
Tregadillett, Launceston



- Smallholding in a lovely rural, yet accessible location
- Three bedroom bungalow (AOC) in need of modernising
- Range of pole barns
- Just over 40 acres of pasture land including some woodland
- A fantastic blank canvas
- EPC: D

Guide Price: £650,000

**Holworthy Farms & Land Department**  
[farms@kivells.com](mailto:farms@kivells.com) | 01409 259547

**Sensham Farm**  
Marhamchurch, Bude



- Substantial modern farmhouse and separate first floor flat, both in need of modernisation
- Range of adaptable farm buildings with stabling
- Set in some 57 acres
- Not far from the North Cornish coast
- EPCs: D and F

Guide Price: £1,600,000

**Holworthy Farms & Land Department**  
[farms@kivells.com](mailto:farms@kivells.com) | 01409 259547

# Farms Sale Agreed

# KIVELLS

[www.kivells.com](http://www.kivells.com)

## East Coombe Farm St. Pinnock, Liskeard



- Three bedroom, two bathroom, three reception room character detached house
- Splendid private location, with far reaching rural views
- Outbuildings with significant potential for alternative uses
- Located in rural East Cornwall between the wide expanses of Bodmin Moor and the South Cornish coastline
- In all 45.50 acres of land and woodland
- EPC: E & D

**Guide Price: £900,000**

Liskeard Farms & Land Department  
[liskeard@kivells.com](mailto:liskeard@kivells.com) | 01579 345543

## Little Clamoak Farm Bere Ferrers, Yelverton

- Four bedroom bungalow (AOC)
- Adaptable range of farm buildings
- Sought after location
- In all approximately 26 acres
- Freehold with vacant possession available
- EPC F

**Guide Price: £725,000**

Exeter Farms & Land Department  
[exeter@kivells.com](mailto:exeter@kivells.com) | 01392 252 262



# Farms Sale Agreed

# KIVELLS

[www.kivells.com](http://www.kivells.com)

**Barton Moor**  
Meshaw, South Molton, Devon



- Three bedroom detached bungalow (AOC)
- Range of modern farm buildings with Class Q Permission for five dwellings
- Desirable and accessible location
- Freehold with vacant possession available
- In all about 4.22 acres
- EPC: 23 Band F

**Guide Price: £495,000**

**Exeter Farms & Land Department**  
[ben.hancock@kivells.com](mailto:ben.hancock@kivells.com) | 01392 252262

# Land Sale Agreed

# KIVELLS

www.kivells.com

## Land off Blackacre Lane

St Columb | Guide Price £150,000 - £155,000



Approx 12.87 acres comprising a single enclosure of gently sloping land currently in a temporary ley. In recent years has been used for arable and vegetable growing purposes.  
Liskeard Farms & Land Agency  
mark.bunt@kivells.com | 01579 345543

## Land at Viverdon Down

St. Mellion, Saltash | Guide Price £465,000



Just under 45 acres of productive pasture land in a very accessible location with lovely far reaching views.  
Holsworthy Farms & Land Agency  
farms@kivells.com | 01409 259547

## Land forming Part Oldsbrim Lot 1

Poundsgate, Newton Abbot | Guide Price £150,000



Approximately 26.19 acres incorporating a block of permanent grassland together with areas of rough grazing.  
Exeter Farms & Land Department  
ian.caunter@kivells.com | 01392 252262

## Land forming Part Oldsbrim Lot 2

Poundsgate, Newton Abbot | Guide Price £75,000



Approximately 12.62 acres incorporating three immaculate field parcels down to permanent pasture.  
Exeter Farms & Land Department  
ian.caunter@kivells.com | 01392 252262

## Land at Upton Farm Lot 1

Delabole | Guide Price £500,000



Approx. 39.59 acres comprising a ring fence block of level or very gently sloping land currently in arable and temporary pastures contained in large, easy working, enclosures.  
Liskeard Farms & Land Department  
mark.bunt@kivells.com | 01579 345543

## Land at Upton Farm Lot 2

Delabole | Guide Price £1,050,000



Approx. 88.25 acres comprising a block of level or very gently sloping land currently in arable and temporary pastures.  
Liskeard Farms & Land Department  
mark.bunt@kivells.com | 01579 345543

# Land Sale Agreed

# KIVELLS

www.kivells.com

## Land at Chudleighs Barn Holding Liskeard | Guide Price £100,000 - £125,000



Approximately 20.19 acres of pasture and amenity land with pretty stream frontage and some woodland included.  
Liskeard Farms & Land Department  
mark.bunt@kivells.com | 01579 345543

## Land at Huxhill Weare Giffard, Bideford | Guide Price £550,000



A productive run of good quality arable and pasture land in a favoured location extending to approximately 49.38 acres.  
Exeter Farms & Land Department  
ben.hancock@kivells.com | 07760 887581

## Tregovenek Bungalow, Attwood Lane, Pensilva, Liskeard, Cornwall PL14 5QU

Kivells have been instructed to market Tregovenek, a detached three/four bedroom bungalow in a quiet rural location, close to the village of Bolventor, with good size outside space. The bungalow is subject to an Agricultural Occupancy Condition.

Enquiries to W M Bunt BSc MRICS FAAV, Kivells, 7-8 Bay Tree Hill, Liskeard, Cornwall PL14 4BE

Tel: 01579 345543 or 07879 640970. Email: mark.bunt@kivells.com.