

HALLWORTHY MARKET REPORT



16-month-old Pedigree Charolais Bull to £4500

THURSDAY 14th MAY 2026

EVERY THURSDAY

Gates Open 6.30am

SALE TIMES

- | | |
|-----------------|---|
| 09:45 am | Draft Ewes followed by Prime, Store Hogs & Breeding Sheep |
| 10:45am | Tested & Untested Prime & OTM Cattle |
| 11:00 am | Store Cattle followed by Stirks and Weaned Calves |

Hallworthy Stockyard, Hallworthy, Camelford, Cornwall, PL32 9SH

Tel: 01840 261261 Fax: 01840 261684

Website: www.kivells.com

Email: hallworthy@kivells.com

SHEEP

AUCTIONEER – STEVE PROUSE 07767 895366

FIELDSMAN – RYAN WALTER 07854 718886

597 DRAFT EWES

A much larger entry and a flying trade, top being £210 for a Texel from Mike Dart and Sons of Tetcott Barton. Suffolks to £210 from DM Hoskin of North Trekeive, Liskeard. Charollais x to £209 from two vendors. Mules to £182 from Mike Dart & Sons of Tetcott Barton. Hill Breeds very much sought after topping at £172 from the Medland Family of Radge Farm.

More Ewes wanted next week please.

338 FAT HOGGS

The Hogg trade was on fire and flying from start to finish and a lot more could have been sold averaging 419.7p to a top of 463p for a pen of 41kgs, £190 from Ken and Pat Bird of Crackington Haven, next was 450p for a pen of 44.7kgs, £201 from J Spry of Springfield, North Tamerton. The Dennis Family of Thorne, Stratton saw their 44kgs make 448p, £197. The heavy Hoggs averaged £220.77 to a top of £230 for two pens from IC Gribble of Battens, North Hill.

205 NEW SEASON LAMBS

More on offer and a flying trade for all weights, overall average of 468.3ppk and several pens around 470p to a top of 493p for three pens of 41.2kgs, £203 from the Stephens Family of Burscott, Holsworthy, followed by 480p for a pen of 44kgs, £211 from Roger Heywood of

Duerdon, Woolsery. Steve Goaman of Greystone saw his 41.2kgs achieve 478p, £197. Top per head was £216 from three vendors, Meg Griffin-Vanstone of Ashwater for two pens, The Stephens Family of Burscott, Holsworthy and M Darts & Sons of Tetcott.

Weight	Top		Average	
	Per Head	Per KG	Per Head	Per KG
32.1-39	161	442	161	442
39.1-45.5	211	493	197.5	470
45.6-52	216	459	211	444
52+	216	384	216	384.3
Overall	216	493	204.9	468.3

COUPLES 75 EWES & 119 LAMBS

Another good entry and a strong trade, Doubles to £420 for Mule 2T from Scott Tummey of Liskeard and Singles to £315 for Mule 2T also sold by Scott Tummey.



Penbode
Farm Vets

Competitively priced farm medicines Livestock fertility testing and advice
Dairy and beef fertility clubs VetTech services
24/7/365 veterinary cover In house labs and lambing bays

www.penbodevets.co.uk
Holsworthy | Bradworthy | Stratton | Launceston | Camelford

STORE CATTLE
AUCTIONEER – RICHARD DENNIS
FIELDSMAN – STUART CORNELIUS 07879 415136

140 Stores penned and sold. No short keep stores penned with the entry made up of long keep cattle which were keenly bid for with many buyers in attendance, with a lot more appetite to source Stores even with another week where the beef price has dropped again. AC & S Pedlar of St Breock presented a proper run of Charolais Stores which sold away to £1860, £1740 and £1730 (21m), followed by Blues Steers from the same farm which parted at £1840 and £1700 (22m). A very well put together 11 month old Simmental Steers attained £1740 for Megan Wellington of St Kew. A trio of South Devon Steers parted at £1840 (23m) in from TM Mitchell of Redruth, younger South Devon Steers to £1700 for a trio of smart yearlings from T Dart of Launceston, who sold a single behind at £1420. PJ & EM Wherry up from Bodmin sold Hereford Steers to £1660 and £1620, further Hereford to £1610 (11m) for MJC Hambly of Liskeard. Young yearling Angus Steers reached £1420 for John Santo of Lostwithiel, followed by yearling Limousin Steers looking well sold at £1300, £1180 and £1100 for Johnathan Born up from Helston. Store Heifers returned at £1750 for Charolais in from TM Mitchell, further Charolais Heifers to £1690, £1560 and £1550 for AC & S Pedlar who sold Blue Heifers to £1520. Two year old South Devon Heifers to £1640 from TM Mitchell, Limousin Heifers to £1480 for PW Harper of Advent and Angus Heifers to £1370 (15m) for John Santo again.



KIVELLS
www.kivells.com

Rural Professional Matters - Toby Theobald
At Hallworthy Market every Thursday

All Rural Professional work able to be supported with, including:

Valuations | Environmental Stewardship | Licences and Tenancies
Compensation Claims | Land Registry Compliant Mapping



Toby Theobald
01409 253275 | toby.theobald@kivells.com

BEEF BREEDING SALE
AUCTIONEER – TIM KIVELL

A cracking day in the breeding section which saw large interest from all parts of Devon and Cornwall. Cow and Calf outfits drew £3200 for a two year old Charolais x Cow with her young fresh South Devon Heifer calf sold by Dan Heard of Holsworthy, who sold his South Devon x Cow and Steer calf to £2800. The highlight of the day was the reduction sale of Autumn Calving Cows and Calves from Robert, Sylvia, Charlie and Chloe Crocker of East Raddon, Lewdown with their Hereford Cow and Charolais Calf at foot hitting £3100, Angus Cow and Charolais Calf at £3020 and Charolais Cow and Charolais Calf at £3000, with two other outfits at £3000. In calf Cows and Heifers back in calf to the Charolais or Hereford from the family sold extremely well and drew £2600, £2500, £2450, £2400, £2250, £2200 and £2150. A credit to the Crocker Family and many thanks for their instruction of sale.

Breeding Bulls – A variety of Bulls present which sold to a high of £4500 given for a 16 month old Pedigree Charolais in from DR Stacey of St Austell. Steve Ley & Hannah Payne travelled down from Dawlish to sell their young 13 month old Pedigree Charolais Bull to £3100. Martin Dairy LTD saw their Pedigree Hereford at 24 months to £2950.

122 STIRKS
AUCTIONEER – TIM KIVELL

STIRKS

A stronger entry of 122 Stirks sold to another rip roaring trade with 7 month old dairy bred Charolais Bulls hitting a mega £1500 for John Santo of Lostwithiel, who sold Gelbvieh Bulls extremely well to £1445 (7m) and Angus to £1380 (7m). Steers parted at £1300 for a super run of Angus in from Andrew Jones of Launceston, who sold other bunches to £1275 and £1250 (12m), further Angus Steers drew £1140 (7m) for John Santo. Blue Steers sold to £1200 (8m) for Neil Robyns of Launceston with others to £1120 for Richard Drew of Bude, who sold Limousin Steers to £1020. Heifers sold to £1100 for a pair of smart Limousin and Charolais in from John Santo with Angus to £1080 for Andrew Jones, £1060 for Dan Vallanvce and £1000 for John Santo.

Farms For Sale

KIVELLS

www.kivells.com

Oxenpark Farm Hersham, Bude

- Wonderful setting with far reaching views over Bude Bay and the North Cornish coast.
- Three bedroom farmhouse and four further cottages
- Superb range of outbuildings suitable for a variety of uses
- In all about 16.18 acres with further land available by separate negotiation.
- Freehold
- Available as a whole or in three lots
- EPC: D, C, C, C & D

Lot 1: Three bedroom farmhouse, two holiday cottages, one further cottage and a lodge. Range of adaptable farm buildings, income generating wind turbine and just over 16 acres.
Guide Price: £1,395,000

Lot 2: A useful block of 45½ acres of pasture and arable land including 3 acres of mature woodland.
Guide Price: £515,000

Lot 3: A single gently sloping pasture field extending to 6.34 acres.
Guide Price: £85,000

Guide Price (as a whole): £1,995,000

Holsworthy Farms & Land Department
farms@kivells.com | 01409 259547



Farms For Sale

KIVELLS

www.kivells.com

Vennbrook Varley Farm, PRIXFORD, Barnstaple

- 100 acre residential and stock farm
- Attractive, well proportioned bungalow (AOC)
- Useful range of livestock and storage buildings
- Ring fenced pasture land
- Superb views
- EPC C [77]

Guide Price: £1,800,000

Holworthy Farms & Land Department
farms@kivells.com | 01409 259547



Farms For Sale

KIVELLS

www.kivells.com

Puddaven Farm North Bovey, Newton Abbot

- Immaculate Farmhouse
- Stunning two bedroom Holiday Cottage
- Outbuildings and stabling
- Outdoor equine menage
- Well-maintained pasture land
- Versatile lifestyle property
- Far reaching views
- In all totalling approximately 32.35 acres (13.09 hectares)
- EPC: E & D

Guide Price: £1,695,000

Exeter Farms & Land Department
exeter@kivells.com | 01392 252262



Farms For Sale

KIVELLS

www.kivells.com

Landabethick Blisland, Bodmin

- Charming, 6 bedroom detached farmhouse
- Excellent range of traditional farm buildings suitable for a variety of uses
- In all about 77 acres comprising a combination of good agricultural land and woodland
- Parking, garaging and workshop space
- Unrivalled, private position at the end of a private drive
- Freehold with vacant possession available
- EPC: D

Guide Price: £1,350,000

Exeter Farms & Land Department
exeter@kivells.com | 01392 252262



Farms For Sale

KIVELLS

www.kivells.com

Great Huish Farm Tedburn St. Mary Exeter

- Grade II Listed detached four bedroom house with three reception rooms
- Two further cottages providing income generation or multi-generation living
- Ring Fenced Farm
- Range of modern and traditional farm buildings
- Development opportunities with some planning consent in place
- Easy access to the A30 & M5
- In all about 8.92 acres of agricultural land with further land available by separate negotiation.
- EPC: C

Guide Price: £1,295,000

Exeter Farms & Land Department
exeter@kivells.com | 01392 252262



Farms For Sale

KIVELLS

www.kivells.com

North Hayne Farm Shillingford, Tiverton

- Attractive and spacious five bedroom farmhouse with extensive living accommodation
- Superb range of traditional outbuildings with potential (STP)
- Productive pastureland, woodland and river access
- In all about 37.36 acres
- Freehold with vacant possession available
- EPC: F

Guide Price: £1,075,000

Exeter Farms & Land Department
exeter@kivells.com | 01392 252262



Farms For Sale

KIVELLS

www.kivells.com

Fern Hill Farm Mount, Bodmin

- Farm with significant development potential
- Range of agricultural and equestrian buildings
- 60.29 acres of land including productive pasture
- Two bedroom lodge
- Planning for farm dwelling and residential caravan
- Located in a super rural location with far reaching valley views
- Freehold with vacant possession upon completion

Guide Price: £1,000,000

Liskeard Farms & Land Department
mark.bunt@kivells.com | 01579 345543



Farms For Sale

KIVELLS

www.kivells.com

Trehere Farm Trewidland, Liskeard

- Substantial four bedroom (all en-suite) modern house enjoying extensive country views
- Range of buildings currently comprising a livery yard with potential for alternative uses
- Approximately 36.51 acres of pasture, amenity woodland and a sand school
- Wonderful rural location yet conveniently situated close to several villages and the town of Liskeard
- EPC: D

Guide Price: £995,000

Liskeard Farms & Land Department
mark.bunt@kivells.com | 01579 345543



Rolstone Bungalow Morchard Bishop, Crediton

- A wonderfully presented and immaculate four bedroom Bungalow, subject to an Agricultural Occupancy Condition (AOC)
- Adjacent Workshop and Office Unit
- A useful Agricultural Building
- Well maintained productive Pasture Land
- In all totalling approximately 10.74 acres (4.34 hectares)
- EPC: C

Guide Price: £925,000

Exeter Farms & Land Department
exeter@kivells.com | 01392 252262



Farms For Sale

KIVELLS

www.kivells.com

Holdstrong Farmhouse Coryton, Okehampton

- A delightful 5 bedroom 17th Century Devon Longhouse
- Situated in a beautiful rural setting on the edge of the Dartmoor National Park
- Superb views
- Stabling and further outbuildings
- Pond
- Coppice
- In all about 15.87 acres
- Freehold with vacant possession available
- EPC: E

Guide Price: £850,000

Exeter Farms & Land Department
exeter@kivells.com | 01392 252262



Farms For Sale

KIVELLS

www.kivells.com

Southmoor Farm Winnards Perch, St Columb

- A superbly presented residential farm in a sought-after North Cornish location
- Well presented, five bedroom detached property in fantastic condition
- Versatile outbuildings
- Productive pasture and woodland
- Sought after location with easy access to the North Cornish coastline
- In all about 33.54 acres
- EPC E [50]

Guide Price: £825,000

Holsworthy Farms & Land Department
farms@kivells.com | 01409 259547



Farms For Sale

KIVELLS

www.kivells.com

Little Clamoak Farm Bere Ferrers, Yelverton

- Four bedroom bungalow (AOC)
- Adaptable range of farm buildings
- Sought after location
- In all approximately 26 acres
- Freehold with vacant possession available
- EPC F

Guide Price: £725,000

Exeter Farms & Land Department
exeter@kivells.com | 01392 252 262



Farms For Sale

KIVELLS

www.kivells.com

West Burrow Farm Bratton Clovelly, Okehampton

A quietly set rural small holding offering huge potential.

- Grade II* Listed thatched farmhouse in need of modernisation.
- 3 beds, 2 receptions.
- Two adjoining traditional barns.
- Land and woodland
- EPC: Exempt as a listed property

Guide Price: £645,000

Holsworthy Farms & Land Department
farms@kivells.com | 01409 259547



Farms For Sale

KIVELLS

www.kivells.com

Barton Moor Meshaw, South Molton, Devon

- Three bedroom detached bungalow (AOC)
- Range of modern farm buildings with Class Q Permission for five dwellings
- Desirable and accessible location
- Freehold with vacant possession available
- In all about 4.22 acres
- EPC: 23 Band F

Guide Price: £495,000

Exeter Farms & Land Department
ben.hancock@kivells.com | 01392 252262



Development Site For Sale

KIVELLS

www.kivells.com

Development Site at Lower Newton Farm Zeal Monachorum, Crediton, Devon

- Valuable residential development opportunity
- Range of agricultural buildings with planning permission for demolition and creation of three new build, detached four and three bedroom dwellings
- Potential under extension of Permitted Development Rights for retention and conversion of the existing buildings (Clarkson's Law - Maximum 10 dwellings), subject to planning
- Additional land available

Guide Price: £450,000

Exeter Farms & Land Department
simon.alford@kivells.com | 01392 252262



Aerial view looking north west

Land For Sale

KIVELLS

www.kivells.com

Land At Trevillies

St. Keyne, Liskeard | Guide Price £375,000 -



Approximately 45.64 acres of productive arable/pasture land and amenity woodland with mains water connected. Freehold with vacant possession upon completion.

Liskeard Farms & Land Department
mark.bunt@kivells.com | 01579 345543

Land at Stoke Canon

Exeter, Devon | Offers in Excess of £375,000

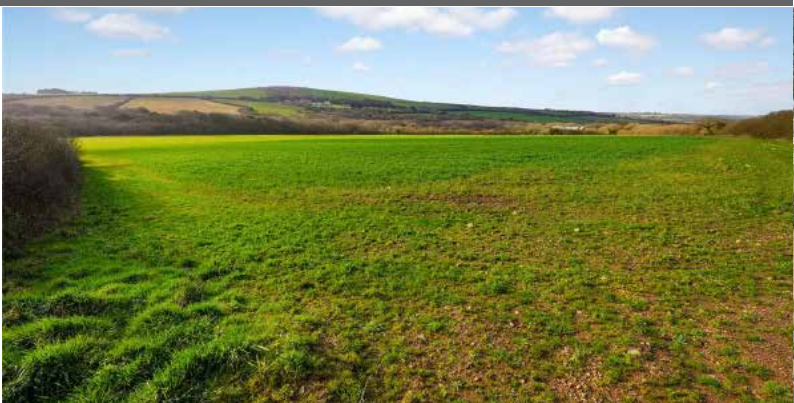


A highly productive run of level arable and pastureland with livestock handling pens extending to just under 46 acres.

Exeter Farms & Land Department
simon.alford@kivells.com | 01392 252262

Land at Criftoe Farm

Tregonetha | Guide Price £675,000 - £700,000



Approximately 64.98 acres of quality cropping land and amenity woodland and a useful modern farm building (with potential for alternative uses, subject to planning).

Liskeard Farms & Land Department
mark.bunt@kivells.com | 01579 345543

Land Off Yorke Road

Dartmouth | Guide Price £195,000



Approximately 12.26 acres in two separate field parcels both down to permanent grassland, previously grazed with livestock.

Exeter Farms & Land Department
exeter@kivells.com | 01392 252262

Land at Polskeys Farm

Roche, St. Austell | Guide Price £495,000



Approximately 59.18 acres of pasture and conservation land accessible off a quiet parish road with mains water connected, a useful livestock building and yard.

Liskeard Farms & Land Department
mark.bunt@kivells.com | 01579 345543

Land at Four Beeches Farm

Sourton, Okehampton | Guide Price £224,000



Approximately 26.25 acres of productive pasture land with easy access to the A386. Suitable for amenity, equestrian and traditional farming.

Exeter Farms & Land Department
exeter@kivells.com | 01392 252262

Land at Higher Reedy Mill

Trewidland, Liskeard | Guide Price £50,000



Approximately 4.39 acres of pasture land, accessible off a quiet parish road close to the village of Trewidland in a quiet rural location with far reaching views.

Liskeard Farms & Land Department
mark.bunt@kivells.com | 01579 345543

Land & Buildings at Horwood

Horwood, Bideford



A fantastic block of just over 166 ½ acres of productive arable land and a useful range of modern agricultural buildings. **Available in two lots.**

- **LOT 1:** Just over 132 acres of arable land with a range of modern and adaptable farm buildings.
Guide Price: £1,600,000
- **LOT 2:** Circa 34 ½ acres of arable land in a single level field.
Guide Price: £400,000

Holsworthy Farms & Land Agency
farms@kivells.com | 01409 259547

Land & Buildings For Rent

KIVELLS

www.kivells.com

GRASS KEEP FOR SALE BY INFORMAL TENDER
Rosedown Farm, Hartland, Devon EX39 6AH



Approximately 78.41 acres available in one lot, to cut and/or graze with sheep. Available 1st June 2026 to 31st October 2026. Tenders to be submitted by 12 noon on Wednesday 20th May 2026.

Toby Theobald
toby.theobald@kivells.com | 01409 253275

GRASS KEEP FOR SALE BY INFORMAL TENDER
Land known as the Prairie Land, North of Tor Down, Exbourne EX20 3QU



58.95 acres available in one lot for cutting and/or grazing purposes. Available from 1st June 2026 to 31st October 2026, Tenders to be submitted by 12 noon on Tuesday 19th May 2026.

Toby Theobald
toby.theobald@kivells.com | 01409 253275

GENERAL PURPOSE BUILDING TO LET
Stourscombe, Launceston | £595 pcm



A new 45' x 30' shed at Stourscombe near Launceston, with great access to A30/A388. Ideal for storage.

Thomas Rattray
thomas.rattray@kivells.com | 07813 016804

Land for Auction

Wednesday 27th May, 7.00pm

Venue: Lifton Strawberry Fields, Lifton, Devon PL16 0DE

KIVELLS

www.kivells.com

Penloe Field

Woolley, Bude | Auction Guide Price £65,000 - £75,000
For sale by public auction - Wednesday 27th May



Approximately 5.59 acres in a quiet rural setting with lovely views and a useful open sided storage building - 27' x 15' (8.23m x 4.57m) with a rain water harvest tank to one side.

Holsworthy Farms & Land Agency
Farms@kivells.com | 01409 259547

Land at Ugworthy

Chilsworthy, Holsworthy | Auction Guide Price £45,000 - £50,000
For sale by public auction - Wednesday 27th May



Extending to some 5.67 acres, the Land at Ugworthy comprises a mainly level pasture field with natural hedge bank boundaries and a small corrugated sheet clad shed (in poor repair) and an ancient burial ground.

Holsworthy Farms & Land Agency
Farms@kivells.com | 01409 259547

Land at Milton Damarel

Holsworthy | Auction Guide Price £20,000
For sale by public auction - Wednesday 27th May



This pretty 2.42 acre field comprises a mainly level paddock which benefits from excellent access from the adjoining main road on its northern boundary. The land would be suitable for amenity purposes, keeping livestock or ponies.

Holsworthy Farms & Land Agency
Farms@kivells.com | 01409 259547

Land at Broad Parkham

Parkham, Bidford I | Auction Guide Price £75,000 - £85,000
For sale by public auction - Wednesday 27th May



Some 8.50 acres benefiting from road frontage and excellent access. The land comprises a very gently sloping pasture field which is enclosed within natural hedge banks.

Holsworthy Farms & Land Agency
Farms@kivells.com | 01409 259547

Land West of Wainhouse Corner

St. Gennys, Bude | Auction Guide Price £140,000 - £150,000
For sale by public auction - Wednesday 27th May



A useful block of just over 15.5 acres of pasture land, with excellent access from the adjoining main road. The land is very gently sloping and extremely well fenced.

Holsworthy Farms & Land Agency
Farms@kivells.com | 01409 259547

Land at Furzedon Field

Trewidland, Liskeard | Auction Guide Price £110,000 - £115,000
For sale by public auction - Wednesday 27th May



Approximately 13.80 acres of pasture land in a ring fence block with a woodland stream boundary and fringe and mains water connected to three troughs.

Liskeard Farms & Land Agency
mark.bunt@kivells.com | 01579 345543

Land for Auction

Wednesday 27th May, 7.00pm

Venue: Lifton Strawberry Fields, Lifton, Devon PL16 0DE

KIVELLS

www.kivells.com

Land at St Keyne

Liskeard | Auction Guide Price £5,000 - £10,000

For sale by public auction - Wednesday 27th May



Approximately 0.40 acres of woodland and amenity land accessible off a quiet parish road, in a picturesque valley location with a woodland stream running through.

Liskeard Farms & Land Agency

mark.bunt@kivells.com | 01579 345543

Land at Kelynack

St. Just, Penzance | Auction Guide Price £130,000

For sale by public auction - Wednesday 27th May



An excellent opportunity to purchase a 13.54 acre block of predominantly level agricultural land in a superb position, just inland from the West Cornish coastline.

Holsworthy Farms & Land Agency

Farms@kivells.com | 01409 259547

2026 Auction Dates

Wednesday 27th May

Wednesday 24th June

Wednesday 29th July

Wednesday 2nd September

Wednesday 7th October

Wednesday 11th November

Thinking of selling by auction? Contact our experienced team today for a **FREE** no obligation auction appraisal.

www.kivells.com

Previous Auction Results

Wednesday 22nd April, 7.00pm

KIVELLS

www.kivells.com

Trefuge Bungalow Coads Green, Launceston, Cornwall

- For sale by Public Auction on Wednesday 22nd April, 7.00pm at Lifton Strawberry Fields, Lifton, Devon PL16 0DH
- Three bedroom bungalow of non traditional construction and in need of updating
- Set in just over 5 acres of gently sloping pasture
- Useful Nissen hut storage shed
- Lovely quiet rural setting with superb moorland views
- EPC = E (46)

Auction Guide Price: £250,000
SOLD: £358,000

Holsworthy Farms & Land Department
farms@kivells.com | 01409 259547



Previous Auction Results

Wednesday 22nd April, 7.00pm

KIVELLS

www.kivells.com

Land & Yard known as Tall Trees

Kit Hill, Callington | Auction Guide Price £25,000
SOLD: £56,000



A great opportunity to acquire a yard, building and 1¼ acres in need of upgrading. Road frontage and good access.

Holsworthy Farms & Land Agency
Farms@kivells.com | 01409 259547

Land at Sladelands Farm

Botus Fleming, | Auction Guide Price £130,000 - £140,000
SOLD: £140,000



Approximately 9.95 acres of pasture, amenity and woodland and a range of buildings currently providing a stable yard. The land is accessible off a quiet parish road and has mains electricity and mains water available.

Liskeard Farms & Land Agency
mark.bunt@kivells.com | 01579 345543

Land lying north of The Pastures

Bratton Clovelly | Auction Guide Price £50,000 - £75,000
SOLD: £68,000



2.11 acres of pasture land, great for livestock grazing or as a pony paddock. Some long term potential, subject to gaining the necessary planning consents.

Holsworthy Farms & Land Agency
Farms@kivells.com | 01409 259547

Land & Buildings at Klymiarven

Tintage | Auction Guide Price £175,000 - £195,000
SOLD: £275,000



Approximately 13.25 acres of level pasture land with a small range of buildings and yard. The land is situated in a great location in the village, not far from the North Cornish coast.

Holsworthy Farms & Land Agency
Farms@kivells.com | 01409 259547

Land at Yonder Park

Ebberley, Torrington | Auction Guide Price £295,000 - £315,000
SOLD: £315,000



A fantastic block of approximately 31.42 acres of arable land, divided into four good sized fields and benefiting from good access from the adjoining parish road and far reaching countryside views.

Holsworthy Farms & Land Agency
Farms@kivells.com | 01409 259547

Land at Lower Wringworthy

Morval, Looe | Auction Guide Price £90,000 - £95,000
SOLD: £95,000



Approximately 10.09 acres comprising two very gently sloping enclosures of permanent pasture accessible off a quiet parish road. The land has previously been used for livestock grazing and forage conservation purposes.

Liskeard Farms & Land Agency
mark.bunt@kivells.com | 01579 345543

Farms Sale Agreed

KIVELLS

www.kivells.com

Keymelford Farm Buildings & Land Keymelford, Colebrook, Crediton, Devon



Lot 1 - Agricultural buildings and yard area with land surrounding extending to 0.41 acres.
Guide Price: £150,000

Lot 2 - Agricultural building with concrete pad and land surrounding extending to 0.41 acres.
Guide Price: £135,000

Lot 3 - A small grassland area extending to approximately 0.14 acres. **Guide Price: £25,000**

Exeter Farms & Land Agency
exeter@kivells.com | 01392 252262

Tor Court Farm Torbryan, Newton Abbot



- Four bedroom, Grade II Listed farmhouse
- Stone barns and a modern agricultural building with potential for alternative uses (stp)
- A truly hidden gem located in a peaceful yet accessible location
- Stunning, well-maintained pasture, orchards and woodland
- In all approximately 67.43 acres (27.28 hectares)

Guide Price: £1,210,000

Exeter Farms & Land Department
ian.caunter@kivells.com | 01392 252262

Farms Sale Agreed

KIVELLS

www.kivells.com

Sandenbury
Tregadillett, Launceston



- Smallholding in a lovely rural, yet accessible location
- Three bedroom bungalow (AOC) in need of modernising
- Range of pole barns
- Just over 40 acres of pasture land including some woodland
- A fantastic blank canvas
- EPC: D

Guide Price: £650,000

Holworthy Farms & Land Department
farms@kivells.com | 01409 259547

Sensham Farm
Marhamchurch, Bude



- Substantial modern farmhouse and separate first floor flat, both in need of modernisation
- Range of adaptable farm buildings with stabling
- Set in some 57 acres
- Not far from the North Cornish coast
- EPCs: D and F

Guide Price: £1,600,000

Holworthy Farms & Land Department
farms@kivells.com | 01409 259547

Farms Sale Agreed

KIVELLS

www.kivells.com

Trelissick Farm Sithney, Helston



In a beautiful sheltered setting, an 85 acre stock farm. For sale as a whole or in 3 lots.

LOT 1: Farmhouse, range of modern livestock and storage buildings, traditional stone barns (some with planning for residential development), set in just over 28 acres of land. EPC: E. **Guide Price: £1,300,000**

LOT 2: A super run of gently sloping pasture land extending to some 43½ acres. **Guide Price: £375,000**

LOT 3: Just over 14 acres and a former waterworks building with planning in principal for a dwelling. **Guide Price: £290,000**

Holsworthy Farms & Land Department
farms@kivells.com | 01409 259547

East Coombe Farm St. Pinnock, Liskeard



- Three bedroom, two bathroom, three reception room character detached house
- Splendid private location, with far reaching rural views
- Outbuildings with significant potential for alternative uses
- Located in rural East Cornwall between the wide expanses of Bodmin Moor and the South Cornish coastline
- In all 45.50 acres of land and woodland
- EPC: E & D

Guide Price: £900,000

Liskeard Farms & Land Department
liskeard@kivells.com | 01579 345543

Land Sale Agreed

KIVELLS

www.kivells.com

Land off Blackacre Lane St Columb | Guide Price £150,000 - £155,000



Approx 12.87 acres comprising a single enclosure of gently sloping land currently in a temporary ley. In recent years has been used for arable and vegetable growing purposes.
Liskeard Farms & Land Agency
mark.bunt@kivells.com | 01579 345543

Land at Viverdon Down St. Mellion, Saltash | Guide Price £465,000



Just under 45 acres of productive pasture land in a very accessible location with lovely far reaching views.
Holsworthy Farms & Land Agency
farms@kivells.com | 01409 259547

Land forming Part Oldsbrim Lot 1 Poundsgate, Newton Abbot | Guide Price £150,000



Approximately 26.19 acres incorporating a block of permanent grassland together with areas of rough grazing.
Exeter Farms & Land Department
ian.caunter@kivells.com | 01392 252262

Land forming Part Oldsbrim Lot 2 Poundsgate, Newton Abbot | Guide Price £75,000



Approximately 12.62 acres incorporating three immaculate field parcels down to permanent pasture.
Exeter Farms & Land Department
ian.caunter@kivells.com | 01392 252262

Land at Upton Farm Lot 1 Delabole | Guide Price £500,000



Approx. 39.59 acres comprising a ring fence block of level or very gently sloping land currently in arable and temporary pastures contained in large, easy working, enclosures.
Liskeard Farms & Land Department
mark.bunt@kivells.com | 01579 345543

Land at Upton Farm Lot 2 Delabole | Guide Price £1,050,000



Approx. 88.25 acres comprising a block of level or very gently sloping land currently in arable and temporary pastures.
Liskeard Farms & Land Department
mark.bunt@kivells.com | 01579 345543

Land Sale Agreed

KIVELLS

www.kivells.com

Land at Chudleighs Barn Holding Liskeard | Guide Price £100,000 - £125,000



Approximately 20.19 acres of pasture and amenity land with pretty stream frontage and some woodland included.
Liskeard Farms & Land Department
mark.bunt@kivells.com | 01579 345543

Land at Huxhill Weare Giffard, Bideford | Guide Price £550,000



A productive run of good quality arable and pasture land in a favoured location extending to approximately 49.38 acres.
Exeter Farms & Land Department
ben.hancock@kivells.com | 07760 887581

Tregovenek Bungalow, Attwood Lane, Pensilva, Liskeard, Cornwall PL14 5QU

Kivells have been instructed to market Tregovenek, a detached three/four bedroom bungalow in a quiet rural location, close to the village of Bolventor, with good size outside space. The bungalow is subject to an Agricultural Occupancy Condition.

Enquiries to W M Bunt BSc MRICS FAAV, Kivells, 7-8 Bay Tree Hill, Liskeard, Cornwall PL14 4BE

Tel: 01579 345543 or 07879 640970. Email: mark.bunt@kivells.com.