

HALLWORTHY MARKET REPORT



THURSDAY 16th APRIL 2026

EVERY THURSDAY

Gates Open 6.30am

SALE TIMES

- | | |
|-----------------|---|
| 09:45 am | Draft Ewes followed by Prime, Store Hogs & Breeding Sheep |
| 10:45am | Tested & Untested Prime & OTM Cattle |
| 11:00 am | Store Cattle followed by Stirks and Weaned Calves |

Hallworthy Stockyard, Hallworthy, Camelford, Cornwall, PL32 9SH

Tel: 01840 261261 Fax: 01840 261684

Website: www.kivells.com

Email: hallworthy@kivells.com

SHEEP

AUCTIONEER – STEVE PROUSE 07767 895366

FIELDSMAN – RYAN WALTER 07854 718886

243 DRAFT EWES

A smaller entry and again a strong trade for all on offer, Texels to a top of £211 from Raymond & Steve Davey of Hessacott, Boyton. Suffolk x Ewes to £200 from Rundle Weldhen from Trekenning Farm, Newquay, Rundle also topped the Longwools at £190. Mules to £175, Hill Breeds to £150 from Tom Meeks of Anden Farm.

500 FAT HOGGS

Another good entry and a very strong trade for all the good meat Hoggs which sold to a top of 425p for a pen of 40kgs, £170 from Allan Heard of Hartland, with three other vendors at 422ppk. The heavy hoggs in keen

demand top being £197 from two vendors, Jasmin Hembrow of Boconnoc and Rundle Weldhen of Trekenning Farm, Newquay.

Weight	Top		Average	
	Per Head	Per KG	Per Head	Per KG
32.1-39	154	395	138	363.5
39.1-45.5	184	425	171	398.4
45.6-52	194	422	187	387.7
52+	197	370	193	352.2
Overall	197	425	186.8	393.2

37 NEW SEASON LAMBS

New Season Lambs have started to come out and a very fast trade for all and more could have been sold, selling to a top per kilo being 459p for a pen of 41kgs, £188 from Ken Godden of Trelulla Farm, Trelill and top per head was £199 for 47kgs from Sarah Mably of Higher Tynes, St Teath.

146 STORE HOGGS

A faster trade for a larger entry, top being £180 for five pens of Suffolk x Ewe Hoggs from the Terminator, Charlie Wills of Halbathic, Liskeard and wether Hoggs sold up to £151 from Adam Champion of Hendra, Liskeard.

COUPLES 48 EWES & 75 LAMBS

Another good entry and still very much sought after and more could have been sold, doubles up to £390 from SJ Kessell of Down View, Tresparrett Post, who also topped the Singles at £290.



Penbode
Farm Vets

Competitively priced farm medicines Livestock fertility testing and advice
 Dairy and beef fertility clubs VetTech services
 24/7/365 veterinary cover In house labs and lambing bays

www.penbodevets.co.uk
 Holsworthy | Bradworthy | Stratton | Launceston | Camelford

STORE CATTLE
AUCTIONEER – RICHARD DENNIS
FIELDSMAN – STUART CORNELIUS 07879 415136

Another week where all pens and loading bays were full of cattle, with 704 sold through both sections. Despite the negative talks of the beef trade the Store trade continues at high levels with an army of buyers from near and far out sourcing turnout cattle. Top of the Store Section was £2230 (52m) for a mature Blue Steer in from DJ Slee, further Blue Steers drew £2090 (24m) from Bucklawren Livestock and £2040 (20m) from MJ Sandercock. AP & DJ House presented a fantastic run of Stores which sold to £2200 (22m) for a trio of Simmental Steers, followed by a well farmed Hereford Steers to £2200 (25m) for JL Vincent who sold useful South Devon Steers to £2200 (21m), further South Devon Steers parted at £2170 for CA Kneebone. Best Angus Steers returned at £2190 (21m) for a decent pair in from J & A Willcocks & Son with other Herefords to £2160 for SA & IM Barkwill and £2120 for BJ & J Worth. Store Heifers peaked at £2170 for a showy trio of two year old Limousins from R & S Moore, other Limousins to £1910 for BG & J Worth. A trio of well farmed Simmentals to £2100 (23m) for AP & DJ House who had others away to £1900, followed by South Devon Heifers to £1900 for CA Kneebone and Blue Heifers to £1900 for Bucklawren Livestock.

An eye catching run of young 10 month old South Devon Steers hit £1640, £1620 and £1600 for PR Weldhen of Newquay.

A handful of Store Bulls which hit £2110 (52m) for DJ Slee.

Breeding Cows for RS & SM Hopper sold extremely well with their in calf Charolias Heifers reaching £3200, £2800 and £2550.

329 STIRKS
AUCTIONEER – TIM KIVELL

STIRKS

Another exceptional entry making it 662 Stirks sold here in a fortnight. Another incredible trade despite the large numbers coming out which saw a large contingent of well-travelled buyers present today. Top call in the Stirk section was an outstanding £1550 (9m) for a single pure bred Simmental Heifer in from Steve Ley coming down from Dawlish, up next was £1530 (11m) given for a pair of Suckler Bred Simmental x in from J Shipton, further Limousins sold to £1310 for a superb pair in from TN & M Morrow. Blue Steers reached £1455 and £1370 for PI Hodge, others to £1240 for AM Pincombe and £1240 for Trela Farms LTD. Angus Steers parted at £1400 and £1355 for a super run for RD & AR Jones, other strong Angus to £1400 for TN & M Morrow, £1390 for PI Hodge and £1200 for VJ Fitzgerald. Hereford Steers sold to a high of £1270 for Craig Lawrence, others to £1160 for TN & M Morrow and £1120 for Trela Farms. Longhorn Steers to £1140 and £1000 for TN & M Morrow again. Friesian Steers saw massive demand and sold to £1050, £1030 and £1000 for PI Hodge, with a trio behind at £920 for TN & M Morrow. A trio of Montbeliarde Steers to £900 for Nute Partnership followed by a Welsh Black Steers to £1000 for TN & M Morrow. Stirk Heifers sold away to £1275 for the best of the Angus from RD & AR Jones who sold others to £1150, more to £1080 for TN & M Morrow, followed by Limousin Heifers to £1240 from the same farm and £1050 from PI Hodge. Blue Heifers to £1200 for J Shipton, £1180 for PI Hodge and £1080 for Trela Farms. A pair of Hereford Heifers parted at £1040 for PI Hodge and an older Charolais Heifer to £1000 for Gracie Dennis.

NEXT WEEKS STIRK ENTRIES

200 Stirks to include:

- 60 British Blue and Angus (6m)
 - 27 British Blues (7m)
 - 25 Angus and Blues (8-9m)
- 10 Hereford and Friesian (8m)
- 8 single Suckled Simmentals (8m)
- 10 Charolais and Herefords (10m)

 For further details please contact Tim Kivell 07788281900

Puddaven Farm North Bovey, Newton Abbot

- Immaculate Farmhouse
- Stunning two bedroom Holiday Cottage
- Outbuildings and stabling
- Outdoor equine menage
- Well-maintained pasture land
- Versatile lifestyle property
- Far reaching views
- In all totalling approximately 32.35 acres (13.09 hectares)
- EPC: E & D

Guide Price: £1,800,000

Exeter Farms & Land Department
exeter@kivells.com | 01392 252262



Oxenpark Farm Hersham, Bude

- Wonderful setting with far reaching views over Bude Bay and the North Cornish coast.
- Three bedroom farmhouse and four further cottages
- Superb range of outbuildings suitable for a variety of uses
- In all about 16.18 acres with further land available by separate negotiation.
- Freehold
- Available as a whole or in three lots
- EPC: D, C, C, C & D

Lot 1: Three bedroom farmhouse, two holiday cottages, one further cottage and a lodge. Range of adaptable farm buildings, income generating wind turbine and just over 16 acres.

Guide Price: £1,395,000

Lot 2: A useful block of 45½ acres of pasture and arable land including 3 acres of mature woodland.

Guide Price: £515,000

Lot 3: A single gently sloping pasture field extending to 6.34 acres.

Guide Price: £85,000

Guide Price (as a whole): £1,995,000

Holsworthy Farms & Land Department
farms@kivells.com | 01409 259547



Trehere Farm Trewidland, Liskeard

- Substantial four bedroom (all en-suite) modern house enjoying extensive country views
- Range of buildings currently comprising a livery yard with potential for alternative uses
- Approximately 36.51 acres of pasture, amenity woodland and a sand school
- Wonderful rural location yet conveniently situated close to several villages and the town of Liskeard
- EPC: D

Guide Price: £995,000

Liskeard Farms & Land Department
mark.bunt@kivells.com | 01579 345543



Farms For Sale

KIVELLS

www.kivells.com

Barton Moor Meshaw, South Molton, Devon

- Three bedroom detached bungalow (AOC)
- Range of modern farm buildings with Class Q Permission for five dwellings
- Desirable and accessible location
- Freehold with vacant possession available
- In all about 4.22 acres
- EPC: 23 Band F

Guide Price: £495,000

Exeter Farms & Land Department
ben.hancock@kivells.com | 01392 252262



Farms For Sale

KIVELLS

www.kivells.com

Landabethick Blisland, Bodmin

- Charming, 6 bedroom detached farmhouse
- Excellent range of traditional farm buildings suitable for a variety of uses
- In all about 77 acres comprising a combination of good agricultural land and woodland
- Parking, garaging and workshop space
- Unrivalled, private position at the end of a private drive
- Freehold with vacant possession available
- EPC: D

Guide Price: £1,350,000

Exeter Farms & Land Department
ben.hancock@kivells.com | 01392 252262



Farms For Sale

KIVELLS

www.kivells.com

Great Huish Farm Tedburn St. Mary Exeter

- Grade II Listed detached four bedroom house with three reception rooms
- Two further cottages providing income generation or multi-generation living
- Ring Fenced Farm
- Range of modern and traditional farm buildings
- Development opportunities with some planning consent in place
- Easy access to the A30 & M5
- In all about 8.92 acres of agricultural land with further land available by separate negotiation.
- EPC: C

Guide Price: £1,395,000

Exeter Farms & Land Department
exeter@kivells.com | 01392 252262



Farms For Sale

KIVELLS

www.kivells.com

West Burrow Farm Bratton Clovelly, Okehampton

A quietly set rural small holding offering huge potential.

- Grade II* Listed thatched farmhouse in need of modernisation.
- 3 beds, 2 receptions.
- Two adjoining traditional barns.
- Land and woodland
- EPC: Exempt as a listed property

Guide Price: £645,000

Holsworthy Farms & Land Department
farms@kivells.com | 01409 259547



Farms For Sale

KIVELLS

www.kivells.com

Fern Hill Farm Mount, Bodmin

- Farm with significant development potential
- Range of agricultural and equestrian buildings
- 60.29 acres of land including productive pasture
- Two bedroom lodge
- Planning for farm dwelling and residential caravan
- Located in a super rural location with far reaching valley views
- Freehold with vacant possession upon completion

Guide Price: £1,000,000

Liskeard Farms & Land Department
mark.bunt@kivells.com | 01579 345543



Development Site For Sale

KIVELLS

www.kivells.com

Development Site at Lower Newton Farm Zeal Monachorum, CREDITON, Devon

- Valuable residential development opportunity
- Range of agricultural buildings with planning permission for demolition and creation of three new build, detached four and three bedroom dwellings
- Potential under extension of Permitted Development Rights for retention and conversion of the existing buildings (Clarkson's Law – Maximum 10 dwellings), subject to planning
- Additional land available

Guide Price: £450,000

Exeter Farms & Land Department
simon.alford@kivells.com | 01392 252262



Aerial view looking north west

Farms For Auction

KIVELLS

www.kivells.com

Trefuge Bungalow Coads Green, Launceston, Cornwall

- For sale by Public Auction on Wednesday 22nd April, 7.00pm at Lifton Strawberry Fields, Lifton, Devon PL16 0DH
- Three bedroom bungalow of non traditional construction and in need of updating
- Set in just over 5 acres of gently sloping pasture
- Useful Nissen hut storage shed
- Lovely quiet rural setting with superb moorland views
- EPC = E (46)

Auction Guide Price: £250,000

Holsworthy Farms & Land Department
farms@kivells.com | 01409 259547



Land For Sale

KIVELLS

www.kivells.com

Land At Trevillies

St. Keyne, Liskeard | Guide Price £375,000 - £400,000



Approximately 45.64 acres of productive arable/pasture land and amenity woodland with mains water connected. Freehold with vacant possession upon completion.
Liskeard Farms & Land Department
mark.bunt@kivells.com | 01579 345543

Land at Stoke Canon

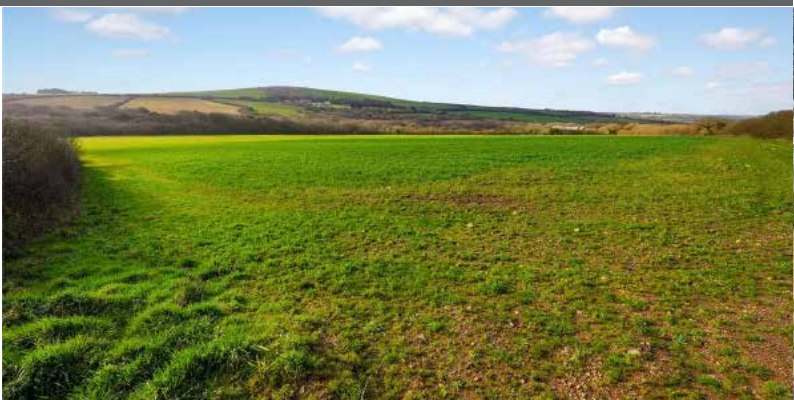
Exeter, Devon | Offers in Excess of £375,000



A highly productive run of level arable and pastureland with livestock handling pens extending to just under 46 acres.
Exeter Farms & Land Department
simon.alford@kivells.com | 01392 252262

Land at Criftoe Farm

Tregonetha | Guide Price £675,000 - £700,000



Approximately 64.98 acres of quality cropping land and amenity woodland and a useful modern farm building (with potential for alternative uses, subject to planning).
Liskeard Farms & Land Department
mark.bunt@kivells.com | 01579 345543

Land Off Yorke Road

Dartmouth | Guide Price £195,000



Approximately 12.26 acres in two separate field parcels both down to permanent grassland, previously grazed with livestock.
Exeter Farms & Land Department
exeter@kivells.com | 01392 252262

Land at Huxhill

Weare Giffard, Bideford | Guide Price £550,000



A productive run of good quality arable and pasture land in a favoured location extending to approximately 49.38 acres with two direct road access points.
Exeter Farms & Land Department
ben.hancock@kivells.com | 07760 887581

Land at Four Beeches Farm

Sourton, Okehampton | Guide Price £224,000



Approximately 26.25 acres of productive pasture land with easy access to the A386 and lovely rural views over Dartmoor. Suitable for amenity, equestrian and traditional farming.
Exeter Farms & Land Department
exeter@kivells.com | 01392 252262

Land For Sale

Land at Polskeys Farm

Roche, St. Austell | Guide Price £495,000



Approximately 59.18 acres of pasture and conservation land accessible off a quiet parish road with far reaching views, mains water connected, a useful livestock building and yard.

Liskeard Farms & Land Department
mark.bunt@kivells.com | 01579 345543

Land & Buildings at Horwood

Horwood, Bideford



A fantastic block of just over 166 ½ acres of productive arable land and a useful range of modern agricultural buildings. **Available in two lots.**

- **LOT 1:** Just over 132 acres of arable land with a range of modern and adaptable farm buildings. **Guide Price: £1,600,000**
- **LOT 2:** Circa 34 ½ acres of arable land in a single level field. **Guide Price: £400,000**

Holworthy Farms & Land Agency
farms@kivells.com | 01409 259547



Land at Tutchenor Farm Patchacott, Beaworthy

GRASS KEEP FOR SALE BY INFORMAL TENDER

- Approximately 86.7 acres available in three lots
- To cut and/or graze with sheep and cattle
- 1st May 2026 to 30th September with cattle, and on to 31st October 2026 with sheep
- Lot 1 - 19.69 acres
- Lot 2 - 28.52 acres
- Lot 3 - 38.49 acres
- Tenders to be submitted no later than 12 noon on Monday 20th April

Holsworthy Farms & Land Department
toby.theobald@kivells.com | 01409 253275

Land at Burridge Farm Tiverton

GRASS KEEP FOR SALE BY INFORMAL TENDER

- 138.23 acres available in three lots or as a whole
- Available from 1st May 2026 to 1st September 2026
- Lot 1: 43.48 Acres
- Lot 2: 40.37 Acres
- Lot 3: 57.38 Acres
- Tenders to be submitted no later than 12 noon on Thursday 23rd April

Exeter Farms & Land Department
josh.tilley@kivells.com | 07919 537457



Land for Auction

Wednesday 22nd April 7.00pm

Venue: Lifton Strawberry Fields, Lifton, Devon PL16 0DE

KIVELLS

www.kivells.com

Land at Higher Reedy Mill

Trewidland, Liskeard | Auction Guide Price £45,000 - £50,000
For sale by public auction - Wednesday 22nd April



Approximately 4.39 acres of sloping pasture land accessible off a quiet parish road. The land is likely to be of interest to those with agricultural, small holding, equestrian or general amenity interest.

Liskeard Farms & Land Agency
mark.bunt@kivells.com | 01579 345543

Land at Sladelands Farm

Botus Fleming, Saltash | Auction Guide Price £130,000 - £140,000
For sale by public auction - Wednesday 22nd April



Approximately 9.95 acres of pasture, amenity and woodland and a range of buildings currently providing a stable yard. The land is accessible off a quiet parish road, close to the village of Botus Fleming and has mains electricity and mains water available.

Liskeard Farms & Land Agency
mark.bunt@kivells.com | 01579 345543

Land lying north of The Pastures

Bratton Clovelly | Auction Guide Price £50,000 - £75,000
For sale by public auction - Wednesday 22nd April



Just over 2 acres of pasture land with lovely far reaching views, great for livestock grazing or as a pony paddock. Some long term potential, subject to gaining the necessary planning consents.

Holsworthy Farms & Land Agency
Farms@kivells.com | 01409 259547

Land & Buildings at Klymiarven

Tintagel | Auction Guide Price £175,000 - £195,000
For sale by public auction - Wednesday 22nd April



Approximately 13.25 acres of level pasture land with a small range of buildings and yard. The land is situated in a great location in the village and not far from the stunning North Cornish coast.

Holsworthy Farms & Land Agency
Farms@kivells.com | 01409 259547

Land at Quarry Hill

Petrockstow, Okehampton | Auction Guide Price £125,000 - £150,000
For sale by public auction - Wednesday 22nd April



A useful block of sheltered pasture land, gently sloping and level, extending to some 14.65 acres in all with road frontage.

Holsworthy Farms & Land Agency
Farms@kivells.com | 01409 259547

Land & Yard known as Tall Trees

Kit Hill, Callington | Auction Guide Price £25,000
For sale by public auction - Wednesday 22nd April



A great opportunity to acquire a yard, building and 1 1/4 acres in need of upgrading. Road frontage and good access.

Holsworthy Farms & Land Agency
Farms@kivells.com | 01409 259547

Land for Auction

Wednesday 22nd April 7.00pm

Venue: Lifton Strawberry Fields, Lifton, Devon PL16 0DE

KIVELLS

www.kivells.com

Land at Yonder Park

Ebberley, Torrington | Auction Guide Price £295,000 - £315,000
For sale by public auction - Wednesday 22nd April



A fantastic block of approximately 31.42 acres of arable land, divided in to four good sized fields and benefiting from good access from the adjoining parish road and far reaching countryside views.

Holsworthy Farms & Land Agency
Farms@kivells.com | 01409 259547

Land at Lower Wringworthy

Morval, Looe | Auction Guide Price £90,000 - £95,000
For sale by public auction - Wednesday 22nd April



Approximately 10.09 acres comprising two very gently sloping enclosures of permanent pasture accessible off a quiet parish road. There is some stock fencing noting the land has been used for livestock grazing and forage conservation purposes.

Liskeard Farms & Land Agency
mark.bunt@kivells.com | 01579 345543

Land at Kelynack

St. Just, Penzance | Auction Guide Price £130,000
For sale by public auction - Wednesday 22nd April



An excellent opportunity to purchase a 13.54 acre block of predominantly level agricultural land in a superb position, just inland from the West Cornish coastline.

Holsworthy Farms & Land Agency
Farms@kivells.com | 01409 259547

Land at Aller

Sampford Courtenay, Okehampton | Auction Guide Price £295,000
For sale by public auction - Wednesday 22nd April



A productive run of pasture land in a desirable and accessible location, in all about 34.64 acres. The land is currently laid to pasture and is divided into three enclosures.

Exeter Farms & Land Agency
Exeter@kivells.com | 01392 252262

Land at Four Beeches Farm

Sourton, Okehampton, | Auction Guide Price £215,000
For sale by public auction - Wednesday 22nd April



Approximately 26.25 acres of productive pasture land, suitable for amenity, equestrian and traditional farming, located within easy access to the A386.

Exeter Farms & Land Agency
Exeter@kivells.com | 01392 252262

Previous Auction Results

Wednesday 25th March, 7.00pm

KIVELLS

www.kivells.com

Land at Crylla Farm

Common Moor, Liskeard | Auction Guide Price £275,000 - £285,000
SOLD: £310,000



Approximately 30.81 acres of gently sloping pasture land situated overlooking Siblyback Lake, enjoying extensive views and benefiting from a natural water supply.

Liskeard Farms & Land Agency
mark.bunt@kivells.com | 01579 345543

Land off New Road

Liskeard | Auction Guide Price £15,000 - £20,000
SOLD: £27,000



Approximately 1.63 acres of gently sloping amenity land situated close to New Road, on the periphery of the town of Liskeard and accessible off a main road, leading to a parish road.

Liskeard Farms & Land Agency
mark.bunt@kivells.com | 01579 345543

Farms Sale Agreed

KIVELLS

www.kivells.com

Keymelford Farm Buildings & Land Keymelford, Colebrook, Crediton, Devon



Lot 1 - Agricultural buildings and yard area with land surrounding extending to 0.41 acres.
Guide Price: £150,000

Lot 2 - Agricultural building with concrete pad and land surrounding extending to 0.41 acres.
Guide Price: £135,000

Lot 3 - A small grassland area extending to approximately 0.14 acres. **Guide Price: £25,000**

Exeter Farms & Land Agency
exeter@kivells.com | 01392 252262

Tor Court Farm Torbryan, Newton Abbot



- Four bedroom, Grade II Listed farmhouse
- Stone barns and a modern agricultural building with potential for alternative uses (stp)
- A truly hidden gem located in a peaceful yet accessible location
- Stunning, well-maintained pasture, orchards and woodland
- In all approximately 67.43 acres (27.28 hectares)

Guide Price: £1,210,000

Exeter Farms & Land Department
ian.caunter@kivells.com | 01392 252262

Farms Sale Agreed

KIVELLS

www.kivells.com

Sandenbury
Tregadillett, Launceston



- Smallholding in a lovely rural, yet accessible location
- Three bedroom bungalow (AOC) in need of modernising
- Range of pole barns
- Just over 40 acres of pasture land including some woodland
- A fantastic blank canvas
- EPC: D

Guide Price: £650,000

Holworthy Farms & Land Department
farms@kivells.com | 01409 259547

Higher Norley Farm
Northlew, Okehampton



- Just over 93 acres of productive pasture land
- A useful range of farm buildings including 96 cubicles, loose housing, fodder store and workshop
- Wonderful far reaching views to Dartmoor
- For sale by Private Treaty

Guide Price: £1,100,000

Holworthy Farms & Land Department
farms@kivells.com | 01409 259547

Farms Sale Agreed

KIVELLS

www.kivells.com

Tregaminion Manor Farm Morvah, Pendeen, Penzance



- Idyllic coastal setting
- Ring fenced farm in an Area of Outstanding Natural Beauty
- Multiple dwellings for income generation or multi-generational living
- Period farmhouse and two cottages
- Range of modern and traditional farm buildings
- Development opportunities with some planning consent in place
- In all some 118 acres
- EPC C, G & G.

Guide Price: £2,500,000

Holsworthy Farms & Land Department
farms@kivells.com | 01409 259547

Trelissick Farm Sithney, Helston



In a beautiful sheltered setting, an 85 acre stock farm. For sale as a whole or in the following lots.

LOT 1: Farmhouse, range of modern livestock and storage buildings, traditional stone barns (some with planning for residential development), set in just over 28 acres of land. EPC: E. **Guide Price: £1,300,000**

LOT 2: A super run of gently sloping pasture land extending to some 43½ acres. **Guide Price: £375,000**

LOT 3: Just over 14 acres and a former waterworks building with planning in principal for a dwelling. **Guide Price: £290,000**

Holsworthy Farms & Land Department
farms@kivells.com | 01409 259547

Farms Sale Agreed

KIVELLS

www.kivells.com

Sensham Farm Marhamchurch, Bude



- Substantial modern farmhouse and separate first floor flat, both in need of modernisation
- Range of adaptable farm buildings with stabling
- Set in some 57 acres
- Not far from the North Cornish coast
- EPCs: D and F

Guide Price: £1,600,000

Holworthy Farms & Land Department
farms@kivells.com | 01409 259547

Pinelands Farm Highampton, Beaworthy



- Charming lifestyle farm with a three bedroom, newly renovated and extended bungalow
- Superb range of traditional and modern outbuildings
- Productive pasture with pockets of woodland extending to just over 56 acres
- Secluded yet convenient location
- EPC: D

Guide Price: £845,000

Holworthy Farms & Land Department
farms@kivells.com | 01409 259547

Farms Sale Agreed

KIVELLS

www.kivells.com

East Coombe Farm
St. Pinnock, Liskeard



- Three bedroom, two bathroom, three reception room character detached house
- Splendid private location, with far reaching rural views
- Outbuildings with significant potential for alternative uses
- Located in rural East Cornwall between the wide expanses of Bodmin Moor and the South Cornish coastline
- In all 45.50 acres of land and woodland
- EPC: E & D

Guide Price: £900,000

Liskeard Farms & Land Department
liskeard@kivells.com | 01579 345543

Land Sale Agreed

KIVELLS

www.kivells.com

Land off Blackacre Lane

St Columb | Guide Price £150,000 - £155,000



Approx 12.87 acres comprising a single enclosure of gently sloping land currently in a temporary ley, although in recent years has been used for arable and vegetable growing purposes.
Liskeard Farms & Land Agency
mark.bunt@kivells.com | 01579 345543

Land at Viverdon Down

St. Mellion, Saltash | Guide Price £465,000



Just under 45 acres of productive pasture land in a very accessible location with lovely far reaching views.
Holsworthy Farms & Land Agency
farms@kivells.com | 01409 259547

Land at St. Issey (LOT 1)

Wadebridge | Guide Price £470,000



Extending to a total of 39.74 acres, lot one comprises a productive block of Grade 3 pasture land, in five enclosures.
Exeter Farms & Land Agency
exeter@kivells.com | 01392 252262

Land at St. Issey (LOT 2)

Wadebridge | Guide Price £450,000



A productive block of farmland totalling 38.87 acres, contained within a ring fence of six enclosures.
Exeter Farms & Land Agency
exeter@kivells.com | 01392 252262

Land at Upton Farm (Lot 1)

Delabole | Guide Price £500,000



Approx. 39.59 acres comprising a ring fence block of level or very gently sloping land currently in arable and temporary pastures contained in large, easy working, enclosures.
Liskeard Farms & Land Department
mark.bunt@kivells.com | 01579 345543

Land at Upton Farm (Lot 2)

Delabole | Guide Price £1,105,000



Approx. 88.25 acres comprising a block of level or very gently sloping land currently in arable and temporary pastures, mostly contained in large, easy working, enclosures.
Liskeard Farms & Land Department
mark.bunt@kivells.com | 01579 345543

Land Sale Agreed

KIVELLS

www.kivells.com

Land forming Part Oldsbrim (Lot 1) Poundsgate, Newton Abbot | Guide Price £150,000



Approximately 26.19 acres incorporating a block of well presented permanent grassland together with areas of rough grazing.

Exeter Farms & Land Department
ian.caunter@kivells.com | 01392 252262

Land forming Part Oldsbrim (Lot 2) Poundsgate, Newton Abbot | Guide Price £75,000



Approximately 12.62 acres incorporating three immaculate field parcels down to permanent pasture. A single access point is available from the north.

Exeter Farms & Land Department
ian.caunter@kivells.com | 01392 252262

Land at Chudleighs Barn Holding Liskeard | Guide Price £100,000 - £125,000



Approximately 20.19 acres of pasture and amenity land with pretty stream frontage and some woodland included.

Liskeard Farms & Land Department
mark.bunt@kivells.com | 01579 345543

Solar Park & Land at Gammaton Bideford

- Two solar parks with RPI linked, long-term leases
- Substantial income
- Excellent road frontage with good internal access via a well established track network
- 21.55 acres of quality pastureland in addition to the solar
- In all about 109.9 acres combining solar and pastureland

Guide Price: £1,950,000

Exeter Farms & Land Department
ben.hancock@kivells.com | 07760 887581



Tregovenek Bungalow, Attwood Lane, Pensilva, Liskeard, Cornwall PL14 5QU

Kivells have been instructed to market Tregovenek, a detached three/four bedroom bungalow in a quiet rural location, close to the village of Bolventor, with good size outside space. The bungalow is subject to an Agricultural Occupancy Condition.

Enquiries to W M Bunt BSc MRICS FAAV, Kivells, 7-8 Bay Tree Hill, Liskeard,
Cornwall PL14 4BE

Tel: 01579 345543 or 07879 640970. Email: mark.bunt@kivells.com.