

HALLWORTHY MARKET REPORT



THURSDAY 18th JUNE 2026

EVERY THURSDAY

Gates Open 6.30am

SALE TIMES

- | | |
|-----------------|---|
| 09:45 am | Draft Ewes followed by Prime, Store Hogs & Breeding Sheep |
| 10:45am | Tested & Untested Prime & OTM Cattle |
| 11:00 am | Store Cattle followed by Stirks and Weaned Calves |

Hallworthy Stockyard, Hallworthy, Camelford, Cornwall, PL32 9SH

Tel: 01840 261261 Fax: 01840 261684

Website: www.kivells.com

Email: hallworthy@kivells.com

SHEEP

AUCTIONEER – STEVE PROUSE 07767 895366

FIELDSMAN – RYAN WALTER 07854 718886

200 DRAFT EWES

A smaller entry and a flying trade from start to finish for all on offer and a lot more could have been sold, top on the day was £191 for Texels from Roger Vosper of Churchtown, Warbstow followed by John Williams & Sons of Scarrabine, Port Issac realised £186 for their 1st pen. Suffolk x Ewes to £180 from Newlyn Farm Partnership of Newquay, who also topped the Mules at £179, Swaledales to £143 from J & D Goodenough.

More Ewes wanted next week please

475 PRIME LAMBS

A smaller entry and for the time of year the Lambs met a very fast trade with the young sappy good meat Lambs very much sought after, top per kilo being 443p for a pen of 41.8kgs, £185 from Janey Mably of Higher Tynes, St Teath, followed by Harry Lobb of Rutherbridge for two pens of young 44.6kgs, 427p at £190.50 ahead. 11 pens of Lambs over £190 to a top pf £198 for 50kgs from WPL Cowling & Son of Newquay.

Weight	Top		Average	
	Per Head	Per KG	Per Head	Per KG
32.1-39	150	412	149	403.2
39.1-45.5	190.5	443	180	417.2
45.6-52	198	417	192	404.4
Overall	198	443	185.5	417.1



Penbode
Farm Vets

Competitively priced farm medicines
Dairy and beef fertility clubs
24/7/365 veterinary cover

Livestock fertility testing and advice
VetTech services
In house labs and lambing bays

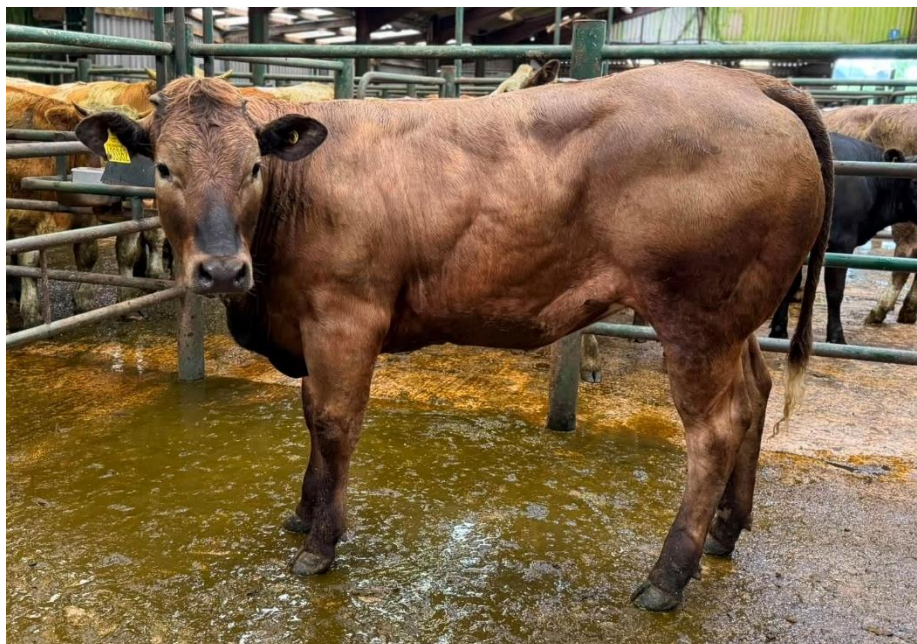
www.penbodevets.co.uk
Holsworthy | Bradworthy | Stratton | Launceston | Camelford

STORE CATTLE
AUCTIONEER – RICHARD DENNIS
FIELDSMAN – STUART CORNELIUS 07879 415136

More cattle were on offer than expected, with 213 head penned and sold with the majority being younger sorts. An abundance of grass across North Cornwall, combined with positive discussions on beef prices, ensured that store cattle continued to meet strong demand and sold to a keen trade throughout.

Older stores- MJ Biscoombe of St Juliot presented a bunch of Hereford Steers which sold to £1910 (x8 26m) further Hereford Steers drew £1710 for PNB Stephens of Liskeard. A single two year old Limousin Steer hit £1910 for Richard Jenkin of Werrington, with Angus Steers selling to £1900 (26m) for a pen of big boys in from PNB Stephens again. A trio of Simmental Steers reached £1850 (23m) for AJ Tonkin of Lostwithiel.

Young stores- What a trade! Johnny Hooper sold eye catching yearling Limousin Steers to £1780 (12m), Blonde Steers at the same young age at £1700 followed a run of Dairy Bred Limousin Steers which parted at £1700 (16m) in from Dan Gilbard of Altarnun. In next was Andrew Halls also of Altarnun selling his Charolais Steers extremely well at £1690 and £1620 (13m). A sweet Simmental Steer attained £1510 (13m) for Arthur Vallance of Tavistock. Young heifers hit £1780, £1710 and £1700 for the best of the Limousin Heifers from Dan Gilbard at only 14-15 months old, further Limousin Heifers to £1400 at only 10 months old from CP Button LTD of St Tudy. A very showy Blonde Heifer to £1650 (12m) for Johnny Hooper, followed by Charolais Heifers to £1530 (11m) for Andrew Halls, £1520 (13m) from Richard Jenkin, £1500 (12m) for JJ Halls of Liskeard. A trio of 13 month old Simmental Heifers to £1400 for Arthur Vallance and similar aged Angus Heifers to £1300 for Rick Temaine of Tintagel.



58 STIRKS
AUCTIONEER – TIM KIVELL

Tight numbers this week in the Stirk pens however another tremendous trade, CP Button LTD up from St Tudy presented a cracking run of Limousin Stirks with his first pair drawing £1300, a trio at £1260 and a bunch at £1245 all ranging from only 7-9 months. Other strong Limousin Steers to £1280 (9m) sold by Richard Drew down from Bude, who sold others to £1130 and £1110, with all of today's Limousin Steers averaging £1200 per head. Ashley and Fraye Smetherham of Liskeard sold a large bunch of Blue Steers well to £1240 (10m), followed by a trio of 7 month old Angus Steers to £1100 for CP Button LTD again. Heifers on the Stirks topped at £1200, £1165 and £1150 for those good sorts from CP Button, a trio of Simmentals to £970 (9m) from Richard Drew, followed by Blue Heifers to £975 and £945 for Ashley and Fraye Smetherham again.

KIVELLS
www.kivells.com

Rural Professional Matters - Toby Theobald
At Hallworthy Market every Thursday

All Rural Professional work able to be supported with, including:

Valuations | Environmental Stewardship | Licences and Tenancies
Compensation Claims | Land Registry Compliant Mapping



Toby Theobald
01409 253275 | toby.theobald@kivells.com

Farms For Sale

KIVELLS

www.kivells.com

Oxenpark Farm Hersham, Bude

- Wonderful setting with far reaching views over Bude Bay and the North Cornish coast.
- Three bedroom farmhouse and four further cottages
- Superb range of outbuildings suitable for a variety of uses
- In all about 16.18 acres with further land available by separate negotiation.
- Freehold
- Available as a whole or in three lots
- EPC: D, C, C, C & D

Lot 1: Three bedroom farmhouse, two holiday cottages, one further cottage and a lodge. Range of adaptable farm buildings, income generating wind turbine and just over 16 acres.
Guide Price: £1,395,000

Lot 2: A useful block of 45½ acres of pasture and arable land including 3 acres of mature woodland.
Guide Price: £515,000

Lot 3: A single gently sloping pasture field extending to 6.34 acres.
Guide Price: £85,000

Guide Price (as a whole): £1,995,000

Holsworthy Farms & Land Department
farms@kivells.com | 01409 259547



Farms For Sale

KIVELLS

www.kivells.com

Vennbrook Varley Farm, PRIXFORD, Barnstaple

- 100 acre residential and stock farm
- Attractive, well proportioned bungalow (AOC)
- Useful range of livestock and storage buildings
- Ring fenced pasture land
- Superb views
- EPC C [77]

Guide Price: £1,800,000

Holworthy Farms & Land Department
farms@kivells.com | 01409 259547



Farms For Sale

KIVELLS

www.kivells.com

Puddaven Farm North Bovey, Newton Abbot

- Immaculate Farmhouse
- Stunning two bedroom Holiday Cottage
- Outbuildings and stabling
- Outdoor equine menage
- Well-maintained pasture land
- Versatile lifestyle property
- Far reaching views
- In all totalling approximately 32.35 acres (13.09 hectares)
- EPC: E & D

Guide Price: £1,695,000

Exeter Farms & Land Department
exeter@kivells.com | 01392 252262



Farms For Sale

KIVELLS

www.kivells.com

Landabethick Blisland, Bodmin

- Charming, 6 bedroom detached farmhouse
- Excellent range of traditional farm buildings suitable for a variety of uses
- In all about 77 acres comprising a combination of good agricultural land and woodland
- Parking, garaging and workshop space
- Unrivalled, private position at the end of a private drive
- Freehold with vacant possession available
- EPC: D

Guide Price: £1,350,000

Exeter Farms & Land Department
exeter@kivells.com | 01392 252262



Farms For Sale

KIVELLS

www.kivells.com

North Hayne Farm Shillingford, Tiverton

- Attractive and spacious five bedroom farmhouse with extensive living accommodation
- Superb range of traditional outbuildings with potential (STP)
- Productive pastureland, woodland and river access
- In all about 37.36 acres
- Freehold with vacant possession available
- EPC: F

Guide Price: £1,075,000

Exeter Farms & Land Department
exeter@kivells.com | 01392 252262



Farms For Sale

KIVELLS

www.kivells.com

Fern Hill Farm Mount, Bodmin

- Farm with significant development potential
- Range of agricultural and equestrian buildings
- 60.29 acres of land including productive pasture
- Two bedroom lodge
- Planning for farm dwelling and residential caravan
- Located in a super rural location with far reaching valley views
- Freehold with vacant possession upon completion

Guide Price: £1,000,000

Liskeard Farms & Land Department
mark.bunt@kivells.com | 01579 345543



Farms For Sale

KIVELLS

www.kivells.com

Trehere Farm Trewidland, Liskeard

- Substantial four bedroom (all en-suite) modern house enjoying extensive country views
- Range of buildings currently comprising a livery yard with potential for alternative uses
- Approximately 36.51 acres of pasture, amenity woodland and a sand school
- Wonderful rural location yet conveniently situated close to several villages and the town of Liskeard
- EPC: D

Guide Price: £995,000

Liskeard Farms & Land Department
mark.bunt@kivells.com | 01579 345543



Rolstone Bungalow Morchard Bishop, Crediton

- A wonderfully presented and immaculate four bedroom Bungalow, subject to an Agricultural Occupancy Condition (AOC)
- Adjacent Workshop and Office Unit
- A useful Agricultural Building
- Well maintained productive Pasture Land
- In all totalling approximately 10.74 acres (4.34 hectares)
- EPC: C

Guide Price: £925,000

Exeter Farms & Land Department
exeter@kivells.com | 01392 252262



Farms For Sale

KIVELLS

www.kivells.com

View Farm

Bratton Flemming, Barnstaple

- Compact ring fenced farm with 34 acres
- Private setting
- Five bedroom dormer bungalow (AOC)
- Range of versatile outbuildings
- Superb views
- EPC: C

Guide Price: £875,000

Holsworthy Farms & Land Department
farms@kivells.com | 01409 259547



Farms For Sale

KIVELLS

www.kivells.com

Southmoor Farm Winnards Perch, St Columb

- A superbly presented residential farm in a sought-after North Cornish location
- Well presented, five bedroom detached property in fantastic condition
- Versatile outbuildings
- Productive pasture and woodland
- Sought after location with easy access to the North Cornish coastline
- In all about 33.54 acres
- EPC E [50]

Guide Price: £825,000

Holsworthy Farms & Land Department
farms@kivells.com | 01409 259547



Farms For Sale

KIVELLS

www.kivells.com

West Burrow Farm Bratton Clovelly, Okehampton

A quietly set rural small holding offering huge potential.

- Grade II* Listed thatched farmhouse in need of modernisation.
- 3 beds, 2 receptions.
- Two adjoining traditional barns.
- Land and woodland
- EPC: Exempt as a listed property

Guide Price: £645,000

Holsworthy Farms & Land Department
farms@kivells.com | 01409 259547



Development Site For Sale

KIVELLS

www.kivells.com

Development Site at Lower Newton Farm Zeal Monachorum, Crediton, Devon

- Valuable residential development opportunity
- Range of agricultural buildings with planning permission for demolition and creation of three new build, detached four and three bedroom dwellings
- Potential under extension of Permitted Development Rights for retention and conversion of the existing buildings (Clarkson's Law - Maximum 10 dwellings), subject to planning
- Additional land available

Guide Price: £450,000

Exeter Farms & Land Department
simon.alford@kivells.com | 01392 252262



Aerial view looking north west

Farms For Auction

KIVELLS

www.kivells.com

North Kestle Tregadillett, Launceston

For Sale by Public Auction on Wednesday 24th June, 7.00pm at Lifton Strawberry Fields, Lifton, Devon, PL16 0DH.

- A charming rural small holding with a substantial farmhouse
- In need of renovation
- Range of outbuildings including some stone barns
- 4.78 acres

Guide Price: £375,000

Holsworthy Farms & Land Department
farms@kivells.com | 01409 259547



Land For Sale

KIVELLS

www.kivells.com

Land forming part Home Park Ipplepen, Newton Abbot | Guide Price £250,000



Approximately 17.57 acres providing an area of secluded pastureland and woodland. The land is well suited for conservation or amenity use.

Exeter Farms & Land Department
exeter@kivells.com | 01392 252262

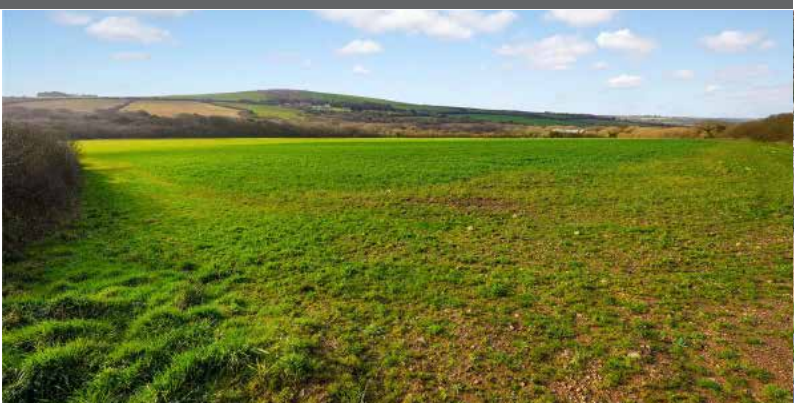
Land at Stoke Canon Exeter, Devon | Offers in Excess of £375,000



A highly productive run of level arable and pastureland with livestock handling pens extending to just under 46 acres.

Exeter Farms & Land Department
simon.alford@kivells.com | 01392 252262

Land at Criftoe Farm Tregonetha | Guide Price £675,000 - £700,000



Approximately 64.98 acres of quality cropping land and amenity woodland and a useful modern farm building (with potential for alternative uses, subject to planning).

Liskeard Farms & Land Department
mark.bunt@kivells.com | 01579 345543

Land Off Yorke Road Dartmouth | Guide Price £195,000



Approximately 12.26 acres in two separate field parcels both down to permanent grassland, previously grazed with livestock.

Exeter Farms & Land Department
exeter@kivells.com | 01392 252262

Land at Polskeys Farm Roche, St. Austell | Guide Price £495,000



Approximately 59.18 acres of pasture and conservation land accessible off a quiet parish road with mains water connected, a useful livestock building and yard.

Liskeard Farms & Land Department
mark.bunt@kivells.com | 01579 345543

Land at Four Beeches Farm Sourton, Okehampton | Guide Price £224,000



Approximately 26.25 acres of productive pasture land with easy access to the A386. Suitable for amenity, equestrian and traditional farming.

Exeter Farms & Land Department
exeter@kivells.com | 01392 252262

Land at Higher Reedy Mill

Trewidland, Liskeard | Guide Price £50,000



Approximately 4.39 acres of pasture land, accessible off a quiet parish road close to the village of Trewidland in a quiet rural location with far reaching views.

Liskeard Farms & Land Department
mark.bunt@kivells.com | 01579 345543

Land & Buildings at Horwood

Horwood, Bideford



Just over 166 ½ acres of productive arable land and a useful range of modern agricultural buildings.

- **LOT 1:** Just over 132 acres of arable land with a range of modern farm buildings. **Guide Price: £1,600,000**
- **LOT 2:** Circa 34 ½ acres of arable land in a single level field. **Guide Price: £400,000**

Holsworthy Farms & Land Agency
farms@kivells.com | 01409 259547

Land at Crylla

Minions, Liskeard



Extending to approximately 141.40 acres in all, the land at Crylla comprises a completely ring-fenced block of predominantly level agricultural land, divided into a number of useful-sized enclosures and enclosed by traditional stone walls. The land is currently utilised for the grazing of livestock and offers an excellent opportunity for continued agricultural use, with practical sized parcels well suited to grazing and general stock management.

Guide Price: £1,400,000

Holsworthy Farms & Land Agency
farms@kivells.com | 01409 259547

Land and buildings Mucksey Lane

Exbourne, Okehampton



A unique development opportunity sat within 27.85 acres of Grade 2 arable land with river frontage. Full planning permission has been granted for the demolition of the existing building and the construction of a substantial four-bedroom dwelling. Further details can be found on the West Devon Borough Council planning portal under reference 3424/25/FUL.

Guide Price: £475,000

Exeter Farms & Land Agency
ben.hancock@kivells.com | 07760 887581

GENERAL PURPOSE BUILDING TO LET
Stourscombe, Launceston | £595 pcm



A new 45' x 30' shed at Stourscombe near Launceston, with great access to A30/A388. Ideal for storage.

Thomas Rattray

thomas.rattray@kivells.com | 07813 016804

2026 Auction Dates

Wednesday 24th June

Wednesday 29th July

Wednesday 2nd September

Wednesday 7th October

Wednesday 11th November

Wednesday 9th December

Kivells excellence since



Land for Auction

Wednesday 24th June, 7.00pm

Venue: Lifton Strawberry Fields, Lifton, Devon PL16 0DE

KIVELLS

www.kivells.com

Land at Liftdown

Liftdown, Lifton | Auction Guide Price £75,000
For sale by public auction - Wednesday 24th June



Extending to some 7.87 acres the land at Liftdown is contained within a gently sloping single enclosure which is all down to permanent pasture.

Holsworthy Farms & Land Agency
Farms@kivells.com | 01409 259547

Land at St Keyne

Liskeard | Auction Guide Price £5,000 - £10,000
For sale by public auction - Wednesday 24th June



Approximately 0.40 acres of woodland and amenity land accessible off a quiet parish road, in a picturesque valley location with a woodland stream running through.

Liskeard Farms & Land Agency
mark.bunt@kivells.com | 01579 345543

Freehold Amenity Land

Tremeale, Daws House | Auction Guide Price £15,000
For sale by public auction - Wednesday 24th June



Parcel of Freehold amenity land extending to approximately 4,225 sq ft with a stone building offering huge potential, subject to necessary building consents, and a swimming pool beneath the mature shrubs.

Launceston Estate Agents
Launceston@kivells.com | 01566 777777

Land at Spring Lodge

Eastcott, Bude | Auction Guide Price £250,000
For sale by public auction - Wednesday 24th June



Versatile parcel of approximately 31 acres of gently sloping land with sea views and boasting a well stocked fishing lake, 5 acres of woodland and a steel framed open barn.

Bude Estate Agents
Bude@kivells.com | 01288 359999

Land at Woolladon

Meeth, Okehampton | Auction Guide Price £130,000
For sale by public auction - Wednesday 24th June



Approximately 17.90 acres of pasture land together with a wooded copse area, arranged in two useful enclosures and well suited to a range of uses.

Exeter Farms & Land Agency
Exeter@kivells.com | 01392 252262

Previous Auction Results

Wednesday 27th May, 7.00pm

KIVELLS

www.kivells.com

Penloe Field

Woolley, Bude | Auction Guide Price £65,000 - £75,000
SOLD: £75,000



Approximately 5.59 acres in a quiet rural setting with lovely views and a useful open sided storage building - 27' x 15' (8.23m x 4.57m) with a rain water harvest tank to one side.

Holsworthy Farms & Land Agency
Farms@kivells.com | 01409 259547

Land at Ugworthy

Chilsworthy, Holsworthy | Auction Guide Price £45,000 - £50,000
SOLD: £50,000



Extending to some 5.67 acres, the Land at Ugworthy comprises a mainly level pasture field with natural hedge bank boundaries and a small corrugated sheet clad shed (in poor repair) and an ancient burial ground.

Holsworthy Farms & Land Agency
Farms@kivells.com | 01409 259547

Land at Milton Damarel

Holsworthy | Auction Guide Price £20,000
SOLD: £34,000



This pretty 2.42 acre field comprises a mainly level paddock which benefits from excellent access from the adjoining main road on its northern boundary. The land would be suitable for amenity purposes, keeping livestock or ponies.

Holsworthy Farms & Land Agency
Farms@kivells.com | 01409 259547

Land at Furzedon Field

Trewidland, Liskeard | Auction Guide Price £110,000 - £115,000
SOLD: £115,000



Approximately 13.80 acres of pasture land in a ring fence block with a woodland stream boundary and fringe and mains water connected to three troughs.

Liskeard Farms & Land Agency
mark.bunt@kivells.com | 01579 345543

Land West of Wainhouse Corner

St. Gennys, Bude | Auction Guide Price £140,000 - £150,000
SOLD: £140,000



A useful block of just over 15.5 acres of pasture land, with excellent access from the adjoining main road. The land is very gently sloping and extremely well fenced.

Holsworthy Farms & Land Agency
Farms@kivells.com | 01409 259547

Farms Sale Agreed

KIVELLS

www.kivells.com

Keymelford Farm Buildings & Land Keymelford, Colebrook, Crediton, Devon



Lot 1 - Agricultural buildings and yard area with land surrounding extending to 0.41 acres.
Guide Price: £150,000

Lot 2 - Agricultural building with concrete pad and land surrounding extending to 0.41 acres.
Guide Price: £135,000

Lot 3 - A small grassland area extending to approximately 0.14 acres. **Guide Price: £25,000**

Exeter Farms & Land Agency
exeter@kivells.com | 01392 252262

Tor Court Farm Torbryan, Newton Abbot



- Four bedroom, Grade II Listed farmhouse
- Stone barns and a modern agricultural building with potential for alternative uses (stp)
- A truly hidden gem located in a peaceful yet accessible location
- Stunning, well-maintained pasture, orchards and woodland
- In all approximately 67.43 acres (27.28 hectares)

Guide Price: £1,210,000

Exeter Farms & Land Department
ian.caunter@kivells.com | 01392 252262

Farms Sale Agreed

KIVELLS

www.kivells.com

Sandenbury
Tregadillett, Launceston



- Smallholding in a lovely rural, yet accessible location
- Three bedroom bungalow (AOC) in need of modernising
- Range of pole barns
- Just over 40 acres of pasture land including some woodland
- A fantastic blank canvas
- EPC: D

Guide Price: £650,000

Holworthy Farms & Land Department
farms@kivells.com | 01409 259547

Sensham Farm
Marhamchurch, Bude



- Substantial modern farmhouse and separate first floor flat, both in need of modernisation
- Range of adaptable farm buildings with stabling
- Set in some 57 acres
- Not far from the North Cornish coast
- EPCs: D and F

Guide Price: £1,600,000

Holworthy Farms & Land Department
farms@kivells.com | 01409 259547

Farms Sale Agreed

KIVELLS

www.kivells.com

East Coombe Farm St. Pinnock, Liskeard



- Three bedroom, two bathroom, three reception room character detached house
- Splendid private location, with far reaching rural views
- Outbuildings with significant potential for alternative uses
- Located in rural East Cornwall between the wide expanses of Bodmin Moor and the South Cornish coastline
- In all 45.50 acres of land and woodland
- EPC: E & D

Guide Price: £900,000

Liskeard Farms & Land Department
liskeard@kivells.com | 01579 345543

Little Clamoak Farm Bere Ferrers, Yelverton

- Four bedroom bungalow (AOC)
- Adaptable range of farm buildings
- Sought after location
- In all approximately 26 acres
- Freehold with vacant possession available
- EPC F

Guide Price: £725,000

Exeter Farms & Land Department
exeter@kivells.com | 01392 252 262



Farms Sale Agreed

KIVELLS

www.kivells.com

Barton Moor
Meshaw, South Molton, Devon



KIVELLS
www.kivells.com
Kivells. The sign that sells!
SALE AGREED

- Three bedroom detached bungalow (AOC). EPC: 23 Band F
- Range of modern farm buildings with Class Q Permission for five dwellings
- Desirable and accessible location
- Freehold with vacant possession available
- In all about 4.22 acres

Guide Price: £495,000

Exeter Farms & Land Department
ben.hancock@kivells.com | 01392 252262

Land located at Wrigwell
Bickington, Newton Abbot



KIVELLS
www.kivells.com
Kivells. The sign that sells!
SALE AGREED

A fantastic block of productive arable land, well located and with excellent road access and suited for farming, conservation or amenity uses. **Available as a whole or in three lots.**

- **LOT 1:** Approximately 28.59 acres forming a single large field parcel with direct access to the public highway from the north. **Guide Price: £315,000**
- **LOT 2:** Approximately 9.19 acres forming a single gently sloping parcel. Access to the field is available from the south or north directly off the public highway. **Guide Price: £100,000**
- **LOT 3:** Approximately 7.19 acres and comprises of a level field parcel with the River Lemon forming the parcels northern edge. Access is available to the west directly off the public highway. **Guide Price: £85,000**
- **As a whole:** Approximately 44.97 acres of productive arable land. **Guide Price: £500,000**

Exeter Farms & Land Agency
exeter@kivells.com | 01392 252262

Farms Sale Agreed

KIVELLS

www.kivells.com

Holdstrong Farmhouse
Coryton, Okehampton



- A delightful 5 bedroom 17th Century Devon Longhouse
- Situated in a beautiful rural setting on the edge of the Dartmoor National Park
- Superb views
- Stabling and further outbuildings
- Pond
- Coppice
- In all about 15.87 acres
- Freehold with vacant possession available
- EPC: E

Guide Price: £850,000

Exeter Farms & Land Department
exeter@kivells.com | 01392 252262

Land Sale Agreed

KIVELLS

www.kivells.com

Land off Blackacre Lane St Columb | Guide Price £150,000 - £155,000



Approx 12.87 acres comprising a single enclosure of gently sloping land currently in a temporary ley. In recent years has been used for arable and vegetable growing purposes.
Liskeard Farms & Land Agency
mark.bunt@kivells.com | 01579 345543

Land at Viverdon Down St. Mellion, Saltash | Guide Price £465,000



Just under 45 acres of productive pasture land in a very accessible location with lovely far reaching views.
Holsworthy Farms & Land Agency
farms@kivells.com | 01409 259547

Land forming Part Oldsbrim Lot 1 Poundsgate, Newton Abbot | Guide Price £150,000



Approximately 26.19 acres incorporating a block of permanent grassland together with areas of rough grazing.
Exeter Farms & Land Department
ian.caunter@kivells.com | 01392 252262

Land forming Part Oldsbrim Lot 2 Poundsgate, Newton Abbot | Guide Price £75,000



Approximately 12.62 acres incorporating three immaculate field parcels down to permanent pasture.
Exeter Farms & Land Department
ian.caunter@kivells.com | 01392 252262

Land at Upton Farm Lot 1 Delabole | Guide Price £500,000



Approx. 39.59 acres comprising a ring fence block of level or very gently sloping land currently in arable and temporary pastures contained in large, easy working, enclosures.
Liskeard Farms & Land Department
mark.bunt@kivells.com | 01579 345543

Land at Upton Farm Lot 2 Delabole | Guide Price £1,050,000



Approx. 88.25 acres comprising a block of level or very gently sloping land currently in arable and temporary pastures.
Liskeard Farms & Land Department
mark.bunt@kivells.com | 01579 345543

Land Sale Agreed

KIVELLS

www.kivells.com

Land at Chudleighs Barn Holding Liskeard | Guide Price £100,000 - £125,000



Approximately 20.19 acres of pasture and amenity land with pretty stream frontage and some woodland included.
Liskeard Farms & Land Department
mark.bunt@kivells.com | 01579 345543

Land at Huxhill Weare Giffard, Bideford | Guide Price £550,000



A productive run of good quality arable and pasture land in a favoured location extending to approximately 49.38 acres.

Exeter Farms & Land Department
ben.hancock@kivells.com | 07760 887581

Land at Lidburn Hill Tedburn St Mary, Exeter | Guide Price £100,000



An attractive south facing arable field extending to approximately 8.95 acres suited for farming, conservation or amenity uses. For sale as a whole.

Exeter Farms & Land Department
exeter@kivells.com | 01392 252262

Tregovenek Bungalow, Attwood Lane, Pensilva, Liskeard, Cornwall PL14 5QU

Kivells have been instructed to market Tregovenek, a detached three/four bedroom bungalow in a quiet rural location, close to the village of Bolventor, with good size outside space. The bungalow is subject to an Agricultural Occupancy Condition.

Enquiries to W M Bunt BSc MRICS FAAV, Kivells, 7-8 Bay Tree Hill, Liskeard, Cornwall PL14 4BE

Tel: 01579 345543 or 07879 640970. Email: mark.bunt@kivells.com.