



EXETER LIVESTOCK CENTRE

MARKET REPORT

APRIL 2026

Monday 20th April – Prime Stock Market



MyFarmWorks

Brought to you by

Shearwell
Data

Livestock Systems

DEMO EVENT

Join us at our
MyFarmWorks
Demo Event –
we'd love to see
you there!



Meet your local rep
Hollie Govier

Exeter Livestock Centre

Friday 29th May | 10am-1pm
Matford Park Road, Exeter, Devon, EX2 8FD

Monday 20th April

26 PRIME CATTLE AND CULL COWS – 10:45 AM

Auctioneer: Simon Alford – 07789 980203

Prime Cattle to £2492 & 372ppk – Cull Cows to £2502 & 270ppk

Monday saw Prime steers reach a top of £2492 (682kg x 366ppk) for a strong, powerful British Blonde from Adrian and Bradley Bowden of Drewsteignton with smart Limousin heifers off the same farm reaching £2305 (624kg x 370ppk) and £2281 (614kg x 372ppk). Other finished steers of note included well turned out British Blues at £2270 (646kg x 352ppk) and £2229 (638kg x 350ppk) for David Slade of Chagford whilst solid looking dairy bred Aberdeen Angus bullocks from Keith and Hilary Harvey from Bovey Tracey realised to £1955 (576kg x 340ppk). The same couple also saw a shapely British Blue heifer draw £2204 (620kg x 356ppk) followed by the better of a pair of Hereford heifers from N & H Tope up from Blackawton which came back at £1930 (584kg x 331ppk). Some very decent results at the top end of the cull cow section this week with hefty Herefords returning £2502 (946kg x 265ppk) and £2025 (842kg x 241ppk) for Gerald Beard of Bickington whilst Simmental cows from Jeramy and Micheal Brown in from Poltimore grossed to £2085 (774kg x 270ppk). Meaty Devon bred barreners from Philip Smith of Luppitt eased to £1656 (624kg x 266ppk) and Limousins ran to £1535 (684kg x 225ppk) for Martin and Karen Curtis up from Elburton, Plymouth. Also, cull bulls sold to £1952 (862kg x 227ppk) for a hefty Devon from Mark and Deborah Treneer of Buckfastleigh.

Demand is strong for cull cows and prime cattle for Monday's Primestock Market – either tested or untested. Please phone the market office on 01392 251261 or Robert Armstrong on 07791 484290.

4503 SHEEP – 09.30 AM

Auctioneer: Russell Steer 07788 318701

Prime Lambs to £215 & 498 ppk

Prime Hogs to £225 & 429 ppk

Mature Sheep to £194 & 369ppk

Cull Ewes to £350 & Rams to £300 & Goats to £120

Another good week in the sheep pens with 4503 forward and sold and strong support by both sellers and buyers in all sections.

1358 PRIME SPRING LAMBS

More springers forward this week, totalling 1358 and all easily sold to the usual crowd of traveled and local buyers resulting in an average of 450ppk and £190 per head with an SQQ of 456ppk, just 3pence less on the week. Biggest and best possible dearer on the week with too many pens to mention over £200 reaching £215 for a super 50kg single from Jack Enticott and family of Wellington, both WE Johns of Bramford Speke and the Perkins family of Coryton claimed £210 with their best as Ann Bond of Axminster made £209 and JDR Farms of Holne attained £208.50. All Ben & Sarah Tuck of Honiton, Steve Hammett & family of Broadclyst and Rob Chanin of Thorverton reached £208 and several other vendors sold 50kg + lambs over £200. Best 47's to £204 for Ross May and family of Netherexe as 46's reached £199 for the Retter family of Cheriton Bishop. 45's ringing the bell at £200 again for Ann Bond as 44's climbed to £199 for Trevor Selway of Sidmouth and 43's to £199.50 for both the Perkins family and Geoff and Liz Hosegood of Crediton. The 40-42kg lambs adding up as nicely as their heavier counterparts with 41kg Charollais at £200.50 for John Barker and family of Wellington with more of this weight at £200 for Phillip Brooks of Yeovil, 42's also to £200 again for the Retter family and the best of the 40kg lambs providing the top price per kilo for the day when they made £199 and 498ppk for both Dan Gould and CA Churchill of Axminster. 39's rose to £190 for the Williams family of Colyton, £189 for Phillip and Peter Rowell of Crockernwell and £186 for both A & L Farming of Totnes and Geoff & Liz Hoesegood whilst 38's peaked at £183 for Gareth & Jess Hutchings of Launceston.

***** VAN or Farm Assurance NOW A MUST FOR ALL SPRING LAMB PRODUCERS please with all major firms requiring one or the other. Without it you are severely disadvantaged!*****

1455 PRIME HOGGS & 96 MATURE SHEEP

The old season were a touch sharper trade despite the varying quality and the lack of those best handyweights we had here last week to help the SQQ, this weeks averages don't tell the whole story with an SQQ of 385ppk only representing 299 of the hogs forward.

More pens over £200 today though with the top twelve prices all over £205 to a top of £225 for an overweight hogg donated by John and Jenny Vanstone of Tavistock on behalf of Devon Air Ambulance, followed closely by the Darke family of Chillington at £220 both Martin and Adam Crabb of Luppitt and Rich Rossiter and family of Galmpton at £216 and both Martin and Adam Crabb and Maurice and David Wonnacott of South Zeal at £210. Geoff & Sally Tripp of East Prawle sold two pens at £208, one of which were 53kgs and equated to 392ppk. Best of the 51's to £199 for Phil Lee of Tedburn St Mary as 50's reached £197.50 for Sam Diment of Wellington and Philip Hopkins of Honiton sold smart 49's at £196.50 and 401ppk. 47's to £189 for both Roger Coysh of Sigford and Kevin Seymour of Wedmore who also sold 46's at £186, a fait matched by Alf Lewis and family of Cheriton Fitzpaine and the Tucker family of North Tawton. 45's to £185 for Matt Rogers Farming of Yealmpton as 44's sold to £184.50 for Duncan Parris and family of Yarcombe and £184 for Darren Reed of Broadwoodkelly. 41's to £175 and 427ppk for Oryn Easterbrook who also had overall top price per kilo with 35kgs at £150 and 429ppk whilst 40kgs sold to £166 & 415ppk for Steve Harris of Littlehempston and the best of the 39's to £159 again for Darren Reed. Mature sheep sold to £194 for Martin and Adam Crabb, £190 for both Philip Hopkins and Rex Dymond of Awliscombe whilst the best per kilo went to 39'kgs at 369ppk equating to £144.

PRIME LAMBS					
Weight	No.	Top £'s	Top ppk	Av. £'s	Av. ppk
32-39	111	190.00 (-6.00)	487 (-16)	174.88 (-8.84)	459 (-19)
40-45	1080	200.50 (-3.50)	498 (+5)	191.60 (-1.08)	456 (-1)
46-52	160	215.00 (~)	434 (+1)	197.35 (-0.56)	412 (-2)
53+	7	210.00 (+9.00)	385 (+8)	199.29 (+1.30)	354 (+4)
PRIME HOGGS					
32-39	30	159.00 (+10.00)	429 (+34)	118.70 (-14.85)	331 (-33)
40-45	279	185.00 (-3.00)	427 (~)	166.31 (-11.86)	388 (-20)
46-52	673	199.00 (-1.00)	404 (-10)	186.26 (+1.01)	380 (-5)
53+	483	225.00 (+13.00)	395 (+16)	193.77 (+3.00)	339 (+9)
MATURE SHEEP	96	196.00 (-4.00)	369 (-15)	155.20 (-7.83)	300 (-4)
		Top		Average	
EWES	1518	£350 (-38)		£174.50 (-2.81)	
RAMS	65	£300 (-100)		£181.58 (+3.54)	
GOATS	1	120 (+8)		120 (+8)	

1518 CULL EWES & 65 RAMS/WETHERS & 1 GOAT

Another sizable entry of 1584 cull sheep after last weeks big show probably weren't the quality or quite the trade but the overall average was only £3 less so taking no harm. 4 pens or 17 sheep sold at £350 apiece, firstly FH Chave & son of Wellington had a pen of 9, followed closely by Henry Summerhayes of the same address at the same figure and the Chaves had another pair also reach £350 in the next pen as well as others at £320 & £270 and then later in the sale Russell Stevens of Crediton sold a smart pen of five shapely Texel's at £350. Charollais ewes to £288 for John Barker and family followed by Jack Enticott with a pen of four at £270 and plenty of purebred ewes trading £220 to £268 including a nice pen of Suffolk ewes at £250 for Phillip Brooks. Suffolk Mules also to £250 for a pair of monsters from Jack Enticott whilst the general run of Suffolk crosses were £190 to £228 with Andy O'Brien of Whimble selling a pen of 17 well at £230. Mules similar on the week and normally £155 to £170 with a few heavy singles in the £180's. Hill ewes to £178 for Cheviots from Jon & Jenny Vanstone whilst Martin Banks of Honiton sold Scotch Blackface ewes well at £140. Tups still just as dear with a Texel topping it at £300 for Brian Johnson and family of Bridport, who sold others at £268 & £245, the Ruell family of Wiveliscombe reached £288, Sandra Osborne of Wilmington sold a Charollais at £280 and Jack Enticott had a pair at £260. Tups averaged £181.58 whilst the ewes were £174.50 and a single goat made £120 for J Frankum of Exeter.



FARM MACHINERY PROPERTY MARKING EVENT/DEMONSTRATION

Date: Friday 1st May 2026

Venue: MATFORD LIVESTOCK MARKET

Time: 0900hrs-Midday.

Come and meet Devon and Cornwall Police Rural Affairs Team, discuss crime prevention/security measures and forensic property marking opportunities. We look forward to seeing you all.



***Other products are available via the SBD website-Police Preferred Specification on all crime prevention practices*

Penbode Farm Vets

- Competitively priced farm medicines
- Dairy and beef fertility clubs
- 24/7/365 veterinary cover
- Livestock fertility testing and advice
- VetTech services
- In-house labs and lambing bays

www.penbodevets.co.uk
Holsworthy | Bradworthy | Stratton | Launceston | Camelford

FORTHCOMING SALES

MONDAY 20TH APRIL – EXETER LIVESTOCK CENTRE

Weekly Prime Stock Market

FRIDAY 24TH APRIL – EXETER LIVESTOCK CENTRE

Weekly Store Market to include Monthly Sale of Organic Cattle & Sheep, Sale of Dairy Cattle plus Fortnightly Pig Sale

MONDAY 27TH APRIL – EXETER LIVESTOCK CENTRE

Weekly Prime Stock Market

TUESDAY 28TH APRIL – EXETER LIVESTOCK CENTRE

Monthly Sale of TB Restricted (Orange Market) Cattle

FRIDAY 1ST MAY – EXETER LIVESTOCK CENTRE

Weekly Store Market to include Catalogued Sale of Hogg Couples

MONDAY 4TH MAY – EXETER LIVESTOCK CENTRE

Weekly Prime Stock Market

TUESDAY 5TH MAY – EXETER LIVESTOCK CENTRE

Dorset Horn & Poll Dorset May Fair Show

WEDNESDAY 6TH MAY – EXETER LIVESTOCK CENTRE

Dorset Horn & Poll Dorset May Fair Sale

FRIDAY 8TH MAY – EXETER LIVESTOCK CENTRE

Weekly Store Market to include Sale of Dairy Cattle & Fortnightly Pig Sale

MONDAY 11TH MAY – EXETER LIVESTOCK CENTRE

Weekly Prime Stock Market

TUESDAY 12TH MAY – EXETER LIVESTOCK CENTRE

Sale of Dairy Cattle

FRIDAY 15TH MAY – EXETER LIVESTOCK CENTRE

Weekly Store Market

MONDAY 18TH MAY – EXETER LIVESTOCK CENTRE

Weekly Prime Stock Market

FRIDAY 22ND MAY – EXETER LIVESTOCK CENTRE

Weekly Store Market to include Fortnightly Pig Sale

MONDAY 25TH MAY – EXETER LIVESTOCK CENTRE

Weekly Prime Stock Market

TUESDAY 26TH MAY – EXETER LIVESTOCK CENTRE

Monthly Sale of TB Restricted (Orange Market) Cattle

FRIDAY 29TH MAY – EXETER LIVESTOCK CENTRE

Weekly Store Market to include Monthly Sale of Organic Cattle & Sheep, Monthly Catalogued Sale of Beef Breeding Stock including the Show and Sale of Cattle for the South Devon Breeders Club plus Early Sale of Accredited and Non Accredited Stock Rams

Farms | Land | Smallholdings

Thinking of selling?

Kivells are at the heart of the farming community throughout the westcountry and beyond and have been selling farms, land and smallholdings since 1885.



Our tailor made service includes;

- ✓ Personal and confidential service
- ✓ Experienced team of Farm Agents
- ✓ Tailor made marketing plans across a variety of platforms
- ✓ Network of contacts within the farming community
- ✓ Added value with advice on Tax, Planning and Stewardship



In-house
bespoke
brochures



Over 40,000
followers on
Social Media



Millions of
page views on
kivells.com,
Rightmove
& Zoopa



Coverage in
national and
regional
publications

With 140 years of industry experience, we pride ourselves in providing friendly and professional advice on all aspects of selling your farm, land or smallholding.

Puddaven Farm North Bovey, Newton Abbot

- Immaculate Farmhouse
- Stunning two bedroom Holiday Cottage
- Outbuildings and stabling
- Outdoor equine menage
- Well-maintained pasture land
- Versatile lifestyle property
- Far reaching views
- In all totalling approximately 32.35 acres (13.09 hectares)
- EPC: E & D

Guide Price: £1,800,000

Exeter Farms & Land Department
exeter@kivells.com | 01392 252262



Oxenpark Farm Hersham, Bude

- Wonderful setting with far reaching views over Bude Bay and the North Cornish coast.
- Three bedroom farmhouse and four further cottages
- Superb range of outbuildings suitable for a variety of uses
- In all about 16.18 acres with further land available by separate negotiation.
- Freehold
- Available as a whole or in three lots
- EPC: D, C, C, C & D

Lot 1: Three bedroom farmhouse, two holiday cottages, one further cottage and a lodge. Range of adaptable farm buildings, income generating wind turbine and just over 16 acres.

Guide Price: £1,395,000

Lot 2: A useful block of 45½ acres of pasture and arable land including 3 acres of mature woodland.

Guide Price: £515,000

Lot 3: A single gently sloping pasture field extending to 6.34 acres.

Guide Price: £85,000

Guide Price (as a whole): £1,995,000

Holsworthy Farms & Land Department
farms@kivells.com | 01409 259547



Trehere Farm Trewidland, Liskeard

- Substantial four bedroom (all en-suite) modern house enjoying extensive country views
- Range of buildings currently comprising a livery yard with potential for alternative uses
- Approximately 36.51 acres of pasture, amenity woodland and a sand school
- Wonderful rural location yet conveniently situated close to several villages and the town of Liskeard
- EPC: D

Guide Price: £995,000

Liskeard Farms & Land Department
mark.bunt@kivells.com | 01579 345543



Farms For Sale

KIVELLS

www.kivells.com

Barton Moor Meshaw, South Molton, Devon

- Three bedroom detached bungalow (AOC)
- Range of modern farm buildings with Class Q Permission for five dwellings
- Desirable and accessible location
- Freehold with vacant possession available
- In all about 4.22 acres
- EPC: 23 Band F

Guide Price: £495,000

Exeter Farms & Land Department
ben.hancock@kivells.com | 01392 252262



Farms For Sale

KIVELLS

www.kivells.com

Landabethick Blisland, Bodmin

- Charming, 6 bedroom detached farmhouse
- Excellent range of traditional farm buildings suitable for a variety of uses
- In all about 77 acres comprising a combination of good agricultural land and woodland
- Parking, garaging and workshop space
- Unrivalled, private position at the end of a private drive
- Freehold with vacant possession available
- EPC: D

Guide Price: £1,350,000

Exeter Farms & Land Department
ben.hancock@kivells.com | 01392 252262



Farms For Sale

KIVELLS

www.kivells.com

Great Huish Farm Tedburn St. Mary Exeter

- Grade II Listed detached four bedroom house with three reception rooms
- Two further cottages providing income generation or multi-generation living
- Ring Fenced Farm
- Range of modern and traditional farm buildings
- Development opportunities with some planning consent in place
- Easy access to the A30 & M5
- In all about 8.92 acres of agricultural land with further land available by separate negotiation.
- EPC: C

Guide Price: £1,395,000

Exeter Farms & Land Department
exeter@kivells.com | 01392 252262



Farms For Sale

KIVELLS

www.kivells.com

West Burrow Farm Bratton Clovelly, Okehampton

A quietly set rural small holding offering huge potential.

- Grade II* Listed thatched farmhouse in need of modernisation.
- 3 beds, 2 receptions.
- Two adjoining traditional barns.
- Land and woodland
- EPC: Exempt as a listed property

Guide Price: £645,000

Holsworthy Farms & Land Department
farms@kivells.com | 01409 259547



Farms For Sale

KIVELLS

www.kivells.com

Fern Hill Farm Mount, Bodmin

- Farm with significant development potential
- Range of agricultural and equestrian buildings
- 60.29 acres of land including productive pasture
- Two bedroom lodge
- Planning for farm dwelling and residential caravan
- Located in a super rural location with far reaching valley views
- Freehold with vacant possession upon completion

Guide Price: £1,000,000

Liskeard Farms & Land Department
mark.bunt@kivells.com | 01579 345543



Development Site **For Sale**

KIVELLS

www.kivells.com

Development Site at Lower Newton Farm Zeal Monachorum, CREDITON, Devon

- Valuable residential development opportunity
- Range of agricultural buildings with planning permission for demolition and creation of three new build, detached four and three bedroom dwellings
- Potential under extension of Permitted Development Rights for retention and conversion of the existing buildings (Clarkson's Law – Maximum 10 dwellings), subject to planning
- Additional land available

Guide Price: £450,000

Exeter Farms & Land Department
simon.alford@kivells.com | 01392 252262



Farms For Auction

KIVELLS

www.kivells.com

Trefuge Bungalow Coads Green, Launceston, Cornwall

- For sale by Public Auction on Wednesday 22nd April, 7.00pm at Lifton Strawberry Fields, Lifton, Devon PL16 0DH
- Three bedroom bungalow of non traditional construction and in need of updating
- Set in just over 5 acres of gently sloping pasture
- Useful Nissen hut storage shed
- Lovely quiet rural setting with superb moorland views
- EPC = E (46)

Auction Guide Price: £250,000

Holsworthy Farms & Land Department
farms@kivells.com | 01409 259547



Land For Sale

KIVELLS

www.kivells.com

Land At Trevillies

St. Keyne, Liskeard | Guide Price £375,000 - £400,000



Approximately 45.64 acres of productive arable/pasture land and amenity woodland with mains water connected. Freehold with vacant possession upon completion.
Liskeard Farms & Land Department
mark.bunt@kivells.com | 01579 345543

Land at Stoke Canon

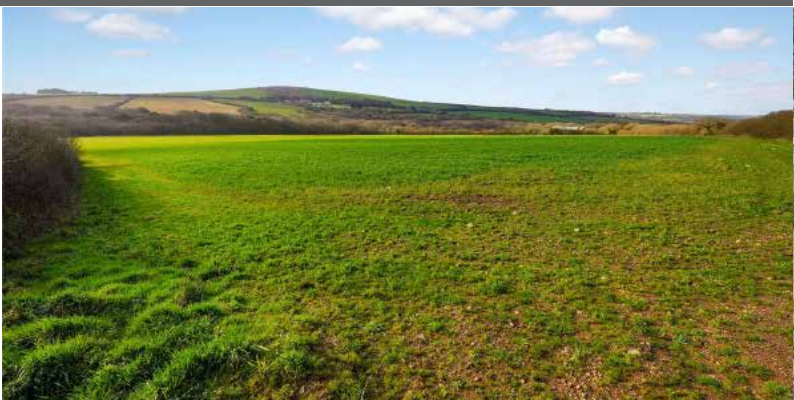
Exeter, Devon | Offers in Excess of £375,000



A highly productive run of level arable and pastureland with livestock handling pens extending to just under 46 acres.
Exeter Farms & Land Department
simon.alford@kivells.com | 01392 252262

Land at Criftoe Farm

Tregonetha | Guide Price £675,000 - £700,000



Approximately 64.98 acres of quality cropping land and amenity woodland and a useful modern farm building (with potential for alternative uses, subject to planning).
Liskeard Farms & Land Department
mark.bunt@kivells.com | 01579 345543

Land Off Yorke Road

Dartmouth | Guide Price £195,000



Approximately 12.26 acres in two separate field parcels both down to permanent grassland, previously grazed with livestock.
Exeter Farms & Land Department
exeter@kivells.com | 01392 252262

Land at Huxhill

Weare Giffard, Bideford | Guide Price £550,000



A productive run of good quality arable and pasture land in a favoured location extending to approximately 49.38 acres with two direct road access points.
Exeter Farms & Land Department
ben.hancock@kivells.com | 07760 887581

Land at Four Beeches Farm

Sourton, Okehampton | Guide Price £224,000



Approximately 26.25 acres of productive pasture land with easy access to the A386 and lovely rural views over Dartmoor. Suitable for amenity, equestrian and traditional farming.
Exeter Farms & Land Department
exeter@kivells.com | 01392 252262

Land For Sale

Land at Polskeys Farm

Roche, St. Austell | Guide Price £495,000



Approximately 59.18 acres of pasture and conservation land accessible off a quiet parish road with far reaching views, mains water connected, a useful livestock building and yard.

Liskeard Farms & Land Department
mark.bunt@kivells.com | 01579 345543

Land & Buildings at Horwood

Horwood, Bideford



A fantastic block of just over 166 ½ acres of productive arable land and a useful range of modern agricultural buildings. **Available in two lots.**

- **LOT 1:** Just over 132 acres of arable land with a range of modern and adaptable farm buildings. **Guide Price: £1,600,000**
- **LOT 2:** Circa 34 ½ acres of arable land in a single level field. **Guide Price: £400,000**

Holworthy Farms & Land Agency
farms@kivells.com | 01409 259547



Land at Tutchenor Farm Patchacott, Beaworthy

GRASS KEEP FOR SALE BY INFORMAL TENDER

- Approximately 86.7 acres available in three lots
- To cut and/or graze with sheep and cattle
- 1st May 2026 to 30th September with cattle, and on to 31st October 2026 with sheep
- Lot 1 - 19.69 acres
- Lot 2 - 28.52 acres
- Lot 3 - 38.49 acres
- Tenders to be submitted no later than 12 noon on Monday 20th April

Holsworthy Farms & Land Department
toby.theobald@kivells.com | 01409 253275

Land at Burridge Farm Tiverton

GRASS KEEP FOR SALE BY INFORMAL TENDER

- 138.23 acres available in three lots or as a whole
- Available from 1st May 2026 to 1st September 2026
- Lot 1: 43.48 Acres
- Lot 2: 40.37 Acres
- Lot 3: 57.38 Acres
- Tenders to be submitted no later than 12 noon on Thursday 23rd April

Exeter Farms & Land Department
josh.tilley@kivells.com | 07919 537457



Land for Auction

Wednesday 22nd April 7.00pm

Venue: Lifton Strawberry Fields, Lifton, Devon PL16 0DE

KIVELLS

www.kivells.com

Land at Higher Reedy Mill

Trewidland, Liskeard | Auction Guide Price £45,000 - £50,000
For sale by public auction - Wednesday 22nd April



Approximately 4.39 acres of sloping pasture land accessible off a quiet parish road. The land is likely to be of interest to those with agricultural, small holding, equestrian or general amenity interest.

Liskeard Farms & Land Agency
mark.bunt@kivells.com | 01579 345543

Land at Sladelands Farm

Botus Fleming, Saltash | Auction Guide Price £130,000 - £140,000
For sale by public auction - Wednesday 22nd April



Approximately 9.95 acres of pasture, amenity and woodland and a range of buildings currently providing a stable yard. The land is accessible off a quiet parish road, close to the village of Botus Fleming and has mains electricity and mains water available.

Liskeard Farms & Land Agency
mark.bunt@kivells.com | 01579 345543

Land lying north of The Pastures

Bratton Clovelly | Auction Guide Price £50,000 - £75,000
For sale by public auction - Wednesday 22nd April



Just over 2 acres of pasture land with lovely far reaching views, great for livestock grazing or as a pony paddock. Some long term potential, subject to gaining the necessary planning consents.

Holsworthy Farms & Land Agency
Farms@kivells.com | 01409 259547

Land & Buildings at Klymiarven

Tintagel | Auction Guide Price £175,000 - £195,000
For sale by public auction - Wednesday 22nd April



Approximately 13.25 acres of level pasture land with a small range of buildings and yard. The land is situated in a great location in the village and not far from the stunning North Cornish coast.

Holsworthy Farms & Land Agency
Farms@kivells.com | 01409 259547

Land at Quarry Hill

Petrockstow, Okehampton | Auction Guide Price £125,000 - £150,000
For sale by public auction - Wednesday 22nd April



A useful block of sheltered pasture land, gently sloping and level, extending to some 14.65 acres in all with road frontage.

Holsworthy Farms & Land Agency
Farms@kivells.com | 01409 259547

Land & Yard known as Tall Trees

Kit Hill, Callington | Auction Guide Price £25,000
For sale by public auction - Wednesday 22nd April



A great opportunity to acquire a yard, building and 1 1/4 acres in need of upgrading. Road frontage and good access.

Holsworthy Farms & Land Agency
Farms@kivells.com | 01409 259547

Land for Auction

Wednesday 22nd April 7.00pm

Venue: Lifton Strawberry Fields, Lifton, Devon PL16 0DE

KIVELLS

www.kivells.com

Land at Yonder Park

Ebberley, Torrington | Auction Guide Price £295,000 - £315,000
For sale by public auction - Wednesday 22nd April



A fantastic block of approximately 31.42 acres of arable land, divided in to four good sized fields and benefiting from good access from the adjoining parish road and far reaching countryside views.

Holsworthy Farms & Land Agency
Farms@kivells.com | 01409 259547

Land at Lower Wringworthy

Morval, Looe | Auction Guide Price £90,000 - £95,000
For sale by public auction - Wednesday 22nd April



Approximately 10.09 acres comprising two very gently sloping enclosures of permanent pasture accessible off a quiet parish road. There is some stock fencing noting the land has been used for livestock grazing and forage conservation purposes.

Liskeard Farms & Land Agency
mark.bunt@kivells.com | 01579 345543

Land at Kelynack

St. Just, Penzance | Auction Guide Price £130,000
For sale by public auction - Wednesday 22nd April



An excellent opportunity to purchase a 13.54 acre block of predominantly level agricultural land in a superb position, just inland from the West Cornish coastline.

Holsworthy Farms & Land Agency
Farms@kivells.com | 01409 259547

Land at Aller

Sampford Courtenay, Okehampton | Auction Guide Price £295,000
For sale by public auction - Wednesday 22nd April



A productive run of pasture land in a desirable and accessible location, in all about 34.64 acres. The land is currently laid to pasture and is divided into three enclosures.

Exeter Farms & Land Agency
Exeter@kivells.com | 01392 252262

Land at Four Beeches Farm

Sourton, Okehampton, | Auction Guide Price £215,000
For sale by public auction - Wednesday 22nd April



Approximately 26.25 acres of productive pasture land, suitable for amenity, equestrian and traditional farming, located within easy access to the A386.

Exeter Farms & Land Agency
Exeter@kivells.com | 01392 252262

Previous Auction Results

Wednesday 25th March, 7.00pm

KIVELLS

www.kivells.com

Land at Crylla Farm

Common Moor, Liskeard | Auction Guide Price £275,000 - £285,000
SOLD: £310,000



Approximately 30.81 acres of gently sloping pasture land situated overlooking Siblyback Lake, enjoying extensive views and benefiting from a natural water supply.

Liskeard Farms & Land Agency
mark.bunt@kivells.com | 01579 345543

Land off New Road

Liskeard | Auction Guide Price £15,000 - £20,000
SOLD: £27,000



Approximately 1.63 acres of gently sloping amenity land situated close to New Road, on the periphery of the town of Liskeard and accessible off a main road, leading to a parish road.

Liskeard Farms & Land Agency
mark.bunt@kivells.com | 01579 345543

Farms Sale Agreed

KIVELLS

www.kivells.com

Keymelford Farm Buildings & Land Keymelford, Colebrook, Crediton, Devon



Lot 1 - Agricultural buildings and yard area with land surrounding extending to 0.41 acres.
Guide Price: £150,000

Lot 2 - Agricultural building with concrete pad and land surrounding extending to 0.41 acres.
Guide Price: £135,000

Lot 3 - A small grassland area extending to approximately 0.14 acres. **Guide Price: £25,000**

Exeter Farms & Land Agency
exeter@kivells.com | 01392 252262

Tor Court Farm Torbryan, Newton Abbot



- Four bedroom, Grade II Listed farmhouse
- Stone barns and a modern agricultural building with potential for alternative uses (stp)
- A truly hidden gem located in a peaceful yet accessible location
- Stunning, well-maintained pasture, orchards and woodland
- In all approximately 67.43 acres (27.28 hectares)

Guide Price: £1,210,000

Exeter Farms & Land Department
ian.caunter@kivells.com | 01392 252262

Farms Sale Agreed

KIVELLS

www.kivells.com

Sandenbury
Tregadillett, Launceston



- Smallholding in a lovely rural, yet accessible location
- Three bedroom bungalow (AOC) in need of modernising
- Range of pole barns
- Just over 40 acres of pasture land including some woodland
- A fantastic blank canvas
- EPC: D

Guide Price: £650,000

Holworthy Farms & Land Department
farms@kivells.com | 01409 259547

Higher Norley Farm
Northlew, Okehampton



- Just over 93 acres of productive pasture land
- A useful range of farm buildings including 96 cubicles, loose housing, fodder store and workshop
- Wonderful far reaching views to Dartmoor
- For sale by Private Treaty

Guide Price: £1,100,000

Holworthy Farms & Land Department
farms@kivells.com | 01409 259547

Farms Sale Agreed

KIVELLS

www.kivells.com

Tregaminion Manor Farm Morvah, Pendeen, Penzance



- Idyllic coastal setting
- Ring fenced farm in an Area of Outstanding Natural Beauty
- Multiple dwellings for income generation or multi-generational living
- Period farmhouse and two cottages
- Range of modern and traditional farm buildings
- Development opportunities with some planning consent in place
- In all some 118 acres
- EPC C, G & G.

Guide Price: £2,500,000

Holsworthy Farms & Land Department
farms@kivells.com | 01409 259547

Trelissick Farm Sithney, Helston



In a beautiful sheltered setting, an 85 acre stock farm. For sale as a whole or in the following lots.

LOT 1: Farmhouse, range of modern livestock and storage buildings, traditional stone barns (some with planning for residential development), set in just over 28 acres of land. EPC: E. **Guide Price: £1,300,000**

LOT 2: A super run of gently sloping pasture land extending to some 43½ acres. **Guide Price: £375,000**

LOT 3: Just over 14 acres and a former waterworks building with planning in principal for a dwelling. **Guide Price: £290,000**

Holsworthy Farms & Land Department
farms@kivells.com | 01409 259547

Farms Sale Agreed

KIVELLS

www.kivells.com

Sensham Farm Marhamchurch, Bude



- Substantial modern farmhouse and separate first floor flat, both in need of modernisation
- Range of adaptable farm buildings with stabling
- Set in some 57 acres
- Not far from the North Cornish coast
- EPCs: D and F

Guide Price: £1,600,000

Holworthy Farms & Land Department
farms@kivells.com | 01409 259547

Pinelands Farm Highampton, Beaworthy



- Charming lifestyle farm with a three bedroom, newly renovated and extended bungalow
- Superb range of traditional and modern outbuildings
- Productive pasture with pockets of woodland extending to just over 56 acres
- Secluded yet convenient location
- EPC: D

Guide Price: £845,000

Holworthy Farms & Land Department
farms@kivells.com | 01409 259547

Farms Sale Agreed

KIVELLS

www.kivells.com

East Coombe Farm
St. Pinnock, Liskeard



- Three bedroom, two bathroom, three reception room character detached house
- Splendid private location, with far reaching rural views
- Outbuildings with significant potential for alternative uses
- Located in rural East Cornwall between the wide expanses of Bodmin Moor and the South Cornish coastline
- In all 45.50 acres of land and woodland
- EPC: E & D

Guide Price: £900,000

Liskeard Farms & Land Department
liskeard@kivells.com | 01579 345543

Land Sale Agreed

KIVELLS

www.kivells.com

Land off Blackacre Lane

St Columb | Guide Price £150,000 - £155,000



Approx 12.87 acres comprising a single enclosure of gently sloping land currently in a temporary ley, although in recent years has been used for arable and vegetable growing purposes.
Liskeard Farms & Land Agency
mark.bunt@kivells.com | 01579 345543

Land at Viverdon Down

St. Mellion, Saltash | Guide Price £465,000



Just under 45 acres of productive pasture land in a very accessible location with lovely far reaching views.

Holsworthy Farms & Land Agency
farms@kivells.com | 01409 259547

Land at St. Issey (LOT 1)

Wadebridge | Guide Price £470,000



Extending to a total of 39.74 acres, lot one comprises a productive block of Grade 3 pasture land, in five enclosures.
Exeter Farms & Land Agency
exeter@kivells.com | 01392 252262

Land at St. Issey (LOT 2)

Wadebridge | Guide Price £450,000



A productive block of farmland totalling 38.87 acres, contained within a ring fence of six enclosures.

Exeter Farms & Land Agency
exeter@kivells.com | 01392 252262

Land at Upton Farm (Lot 1)

Delabole | Guide Price £500,000



Approx. 39.59 acres comprising a ring fence block of level or very gently sloping land currently in arable and temporary pastures contained in large, easy working, enclosures.

Liskeard Farms & Land Department
mark.bunt@kivells.com | 01579 345543

Land at Upton Farm (Lot 2)

Delabole | Guide Price £1,105,000



Approx. 88.25 acres comprising a block of level or very gently sloping land currently in arable and temporary pastures, mostly contained in large, easy working, enclosures.

Liskeard Farms & Land Department
mark.bunt@kivells.com | 01579 345543

Land Sale Agreed

KIVELLS

www.kivells.com

Land forming Part Oldsbrim (Lot 1) Poundsgate, Newton Abbot | Guide Price £150,000



Approximately 26.19 acres incorporating a block of well presented permanent grassland together with areas of rough grazing.

Exeter Farms & Land Department
ian.caunter@kivells.com | 01392 252262

Land forming Part Oldsbrim (Lot 2) Poundsgate, Newton Abbot | Guide Price £75,000



Approximately 12.62 acres incorporating three immaculate field parcels down to permanent pasture. A single access point is available from the north.

Exeter Farms & Land Department
ian.caunter@kivells.com | 01392 252262

Land at Chudleighs Barn Holding Liskeard | Guide Price £100,000 - £125,000



Approximately 20.19 acres of pasture and amenity land with pretty stream frontage and some woodland included.

Liskeard Farms & Land Department
mark.bunt@kivells.com | 01579 345543

Solar Park & Land at Gammaton Bideford

- Two solar parks with RPI linked, long-term leases
- Substantial income
- Excellent road frontage with good internal access via a well established track network
- 21.55 acres of quality pastureland in addition to the solar
- In all about 109.9 acres combining solar and pastureland

Guide Price: £1,950,000

Exeter Farms & Land Department
ben.hancock@kivells.com | 07760 887581



Tregovenek Bungalow, Attwood Lane, Pensilva, Liskeard, Cornwall PL14 5QU

Kivells have been instructed to market Tregovenek, a detached three/four bedroom bungalow in a quiet rural location, close to the village of Bolventor, with good size outside space. The bungalow is subject to an Agricultural Occupancy Condition.

Enquiries to W M Bunt BSc MRICS FAAV, Kivells, 7-8 Bay Tree Hill, Liskeard,
Cornwall PL14 4BE

Tel: 01579 345543 or 07879 640970. Email: mark.bunt@kivells.com.