



# EXETER LIVESTOCK CENTRE

# MARKET REPORT MAY 2026

Friday 22<sup>nd</sup> May – Store Stock Market



# MyFarmWorks

Brought to you by

Shearwell  
Data

Livestock Systems

## DEMO EVENT

Join us at our  
**MyFarmWorks**  
**Demo Event** –  
we'd love to see  
you there!



Meet your local rep  
**Hollie Govier**

## Exeter Livestock Centre

Friday 29<sup>th</sup> May | 10am-1pm  
Matford Park Road, Exeter, Devon, EX2 8FD

  
**Penbode**  
Farm Vets



- Competitively priced farm medicines
- Dairy and beef fertility clubs
- 24/7/365 veterinary cover
- Livestock fertility testing and advice
- VetTech services
- In-house labs and lambing bays

[www.penbodevets.co.uk](http://www.penbodevets.co.uk)

Holsworthy | Bradworthy | Stratton | Launceston | Camelford

Friday 22nd May 2026

**167 STORE CATTLE AND STIRKS– 10.00am**

**Auctioneer: Simon Alford – 07789 980203**

**Store Steers to £2140 – Store Heifers to £1740**

The usual short entry of cattle on Devon County Show week sold to a stand on trade with those younger steers and heifers looking well sold and those older, stronger sorts seeing better value once again. Steers topped out at £2140 for Owen Potter of Ivybridge who saw his grand Limousin (20m) reach £2140 whilst Derek Pyle in from Clyst Honiton sold his overage (35m) Limousin bullocks for £1910 apiece. Derek Pyle also saw top priced British Blue steers, with handy bunches (30m) selling to £2080 and £2010 followed by later born Blue steers (20m) from AJ Withers and Sons of Cove at £1910. Traditional native breed steers saw a couple of super Devons from Mark Edwards of Coombe st Nicholas ease to £2000 a life whilst smart South Devon bullocks of a similar age ran to £1880 for JP Matthews and Son up from Torpoint. None of those forward, close to slaughter heifers about this week although a pair of shapely South Devons (20m) from JP Matthews and Son did rise to £1860 followed by pair of British Blues (24m) at £1740 apiece from AJ Withers and Son. Other heifer prices of interest included young (15m) matching Aberdeen Angus and Blues at £1700 for Phillip and Dan Dennis of North Tawton followed by three well kept Simmental females (29m) also reaching £1700 for Andrew Shervington of Hittisleigh together with another pen of three heifers in the way of neat Herefords (25m) from Robert Moore up from Diptford which went on to draw £1580 each. Perhaps the highlight of the morning was a pair of enormous Charolais cull cows from John Andrew of Wembury making £2300 and £2060.

**Red Tractor** Please ensure you inform us if your Red Tractor status has changed since last consigning stock with us or if the residency rules for the animals you are selling have not been met.

**Please could we remind all customers of the need to clean and disinfect their vehicles and to complete the Vendor Declaration on the back of the entry forms. Thank you**

f @KivellsProperty

**KIVELLS**  
www.kivells.com

Your **Development Land and Planning Team** here at Kivells have housebuilders and developers who are interested in the right sites – from small family run builders who are looking for just 10 plots to large national housebuilders who want sites for 100 plus houses.

If you own land on the edge of a large village or town with good access and road frontage, we would be delighted to chat with you about your land and if there is a chance of planning for housing development in the future. With the recent reforms to the planning system, this could be an opportunity to add value to your land that could work harder for you.



Contact your Development Land & Planning Team today to discuss your options.



Oliver Keates BSc (Hons)  
Dip TP, MRTPI  
Head of Development Land  
and Planning Services  
07554 060370



Mark Bromell BSc (Hons)  
MRICS FAAV FLAA  
Director  
07966 430001



Mark Burt  
BSc MRICS FAAV  
Director  
07879 640970



Simon Alford  
Director  
07789 980203



Thomas Ratray  
BSc (Hons) MRICS FAAV  
Director  
07813 016804



Claire Quick  
BSc (Hons) MRICS FAAV  
Rural Chartered Surveyor  
07789 980204



Ian Caunter BSc (Hons)  
MRICS FAAV FLAA  
Rural Chartered Surveyor  
07813 068935



Sam Turner  
MNAEA  
Director  
07951 240305



Daniel Stokes  
MNAEA  
Director  
07581 006203

## 37 STIRKS & SUCKLED CALVES

Auctioneer: *Ian Caunter 07813 068935*

A tight entry met another extremely pleasing trade with Nick Isaac of Ipplepen selling South Devon steers topping out at £1280 (12m) with others to £1040 & £1020 (10). GJ & AV Horn of Bridestowe sold Simmental cross steers (14m) to £1040 whilst Phil Kelland of Tiverton sold dairy bred Hereford steers (9m) to £910 with Angus steers (8m) to £880. Heifers topped out at £1060 for Andrew Holland down from West Anstey selling dairy bred Blues (7m) whilst Nick Isaac sold South Devon heifers (12m) to £1040. GJ & AV Horn sold Limousin cross heifers to £1000. Trade for these younger cattle remaining extremely strong and more required in the coming weeks.

## 20 CALVES 10.15 AM

Auctioneer: *Mark Davis 07773 371774*

Tight numbers of rearing calves were forward on Friday, but that did little to deter buyers, with another outstanding trade seen throughout. Trade of the day was for a 3-week-old Hereford bull from H & AA Wastnage Ltd, Budleigh Salterton, which sold to an impressive £650. Blue bulls from RJ & KL Emmett, South Molton, matched this figure at £650 for a young but well-grown calf, while others sold to £580 for DW Cole & Son, Bradninch, and £520 for Broom & Son, Cullompton. Angus bulls sold to £500 for a tidy calf from DW Cole & Son, with further strong prices of £465 achieved by LA Luxmoore, Crediton. The Wastnage Family also topped the heifer section with the final calf through the ring, a young fresh Hereford heifer, reaching £540. Other well-bred Hereford heifers sold to £530 and £440 for Rob Keenor, Lapford. Angus heifers sold to £400 twice for LA Luxmoore, with Broom & Son also achieving £400. More calves are required for next Friday's sale.

## 34 PIGS

Auctioneer: *Andrew Varney*

A small entry of cull sows met a trade similar to a fortnight ago. Top price of £60 for Luke Ellis with others to £50 for Jack Foan from Cheriton Fitzpaine. Cull boars to £50 again for Luke Ellis.

A good entry of prime pigs met good trade with pork pigs to £140 (94kg x 148.9ppk) from CJ & JL White of Northlew. Bacon pigs to £142 (141kg x 100.7ppk).

Weaners to £52 & £40 from Helen Jervis.

**Next Pig Sale here at Exeter will be held on Friday 5<sup>th</sup> June, it is vital that you let us know of your potential entries in plenty of time so we can advise vendors together with prospective purchasers of expected numbers forward.**

**236 SHEEP – 10.45 AM**  
Auctioneer: Russell Steer 07788 318701

**Orphan Lambs to £32 Store Lambs to £165/Store Hogs to £169 Grazing Ewes to £200  
Single Couples to £348 & Double Couples to £425**

*A quiet day in the sheep pens on county show week but still plenty of trade for the goods on offer.*

**13 ORPHAN LAMBS**

A big crowd around the tame lamb pens saw the best rise to £32 for the Baxter family of Exwick with a pen of five as Adam & Kate Partridge of Poundsgate made £25 and all 13 averaged £24.63.

**105 STORE LAMBS & HOGGS**

Just over 100 stores rose to £169 for a hogg from the Dawe family of Lewdown closely followed by Brian Abraham of Dunsford with another at £165 and hill bred hogs to £150 for two vendors. Best of the new season stores rose to £165 & £164 for H & M Farmers of Newton Abbot and £143 for Sophie Bould-Lynch of Blackawton with smaller and younger sorts looking well sold between £110 and £125. Overall average £119.30.

**26 GRAZING EWES**

A tight entry of grazers saw Lisa Penhorwood of Liskeard sell a Dutch Spotted ewe at £200 as well as Zwartbles at £165 & £164 and Ben and Sarah Tuck of Honiton had a Suffolk x ewe at £180.

**40 EWES/HOGGS & 52 LAMBS (92 LIVES)**

Also a tight entry of couples but on the whole decent quality with impressive averages of £303 per outfit and £133.62 per life across the board. Ben and Sarah Tuck parting with their later lambing portion of ewes selling smart doubles to £425 & £395 as well as strong singles at £338, £318 and £300. Ian Harris of Beaworthy had a nice run of hogs singles that rose to £348, £340, £330 and £290 whilst Tom Havill of Widecombe had a nice pen of 5 F/BM Mules with doubles that made £302.

# GREEN LANE RURAL SERVICES Ltd

HEDGING & FENCING  
CONTRACTORS

01884 698902



## 37<sup>TH</sup> ANNUAL SALE OF STANDING STRAW

*Entries Invited*

EXETER LIVESTOCK CENTRE



**ENTRIES CLOSE**  
FRIDAY  
5TH JUNE 2026



**SALE DATE**  
FRIDAY  
19TH JUNE 2026



**SALE AT APPROX.**  
12.30PM

PLEASE CONTACT EXETER LIVESTOCK CENTRE OR IAN CAUNTER  
FOR MORE DETAILS & ENTRY FORMS OR VISIT OUR WEBSITE  
07813 068395 | 01392 251261 | EXETER@KIVELLS.COM | WWW.KIVELLS.COM

**KIVELLS**

[www.kivells.com](http://www.kivells.com)

## FORTHCOMING SALES

### **MONDAY 25<sup>TH</sup> MAY – EXETER LIVESTOCK CENTRE**

*Weekly Prime Stock Market*

### **FRIDAY 29<sup>TH</sup> MAY – EXETER LIVESTOCK CENTRE**

*Weekly Store Market to include Monthly Sale of Organic Cattle & Sheep, Monthly Catalogued Sale of Beef Breeding Stock including the Show and Sale of Cattle for the South Devon Breeders Club plus Sale of Dairy Cattle plus Catalogued Sale of Hogg Couples plus Fortnightly Pig Sale (please note change of date for this sale).*

### **MONDAY 1<sup>ST</sup> JUNE – EXETER LIVESTOCK CENTRE**

*Weekly Prime Stock Market*

### **FRIDAY 5<sup>TH</sup> JUNE – EXETER LIVESTOCK CENTRE**

*Weekly Store Market to include Fortnightly Pig Sale*

### **MONDAY 8<sup>TH</sup> JUNE – EXETER LIVESTOCK CENTRE**

*Weekly Prime Stock Market*

### **FRIDAY 12<sup>TH</sup> JUNE – EXETER LIVESTOCK CENTRE**

*Weekly Store Market to include Sale of Dairy Cattle plus 38<sup>th</sup> Annual June Sale of Early Breeding Ewes & Rams including Show & Sale of Dorset X Breeding Ewes.*

### **MONDAY 15<sup>TH</sup> JUNE – EXETER LIVESTOCK CENTRE**

*Weekly Prime Stock Market*

### **FRIDAY 19<sup>TH</sup> JUNE – EXETER LIVESTOCK CENTRE**

*Weekly Store Market to include 1<sup>st</sup> Weekly Sale of Store Lambs, Monthly Catalogued Sale of Beef Breeding Stock, Fortnightly Pig Sale and Collective Standing Straw Sale.*

### **MONDAY 22<sup>ND</sup> JUNE – EXETER LIVESTOCK CENTRE**

*Weekly Prime Stock Market*

### **FRIDAY 26<sup>TH</sup> JUNE – EXETER LIVESTOCK CENTRE**

*Weekly Store Market to include Monthly Sale of Organic Cattle and Sheep, Sale of Dairy Cattle*

### **MONDAY 29<sup>TH</sup> JUNE – EXETER LIVESTOCK CENTRE**

*Weekly Prime Stock Market*

### **TUESDAY 30<sup>TH</sup> JUNE – EXETER LIVESTOCK CENTRE**

*Monthly Sale of TB Restricted (Orange Market) Cattle*

### **FRIDAY 3<sup>RD</sup> JULY – EXETER LIVESTOCK CENTRE**

*Weekly Store Market to include Fortnightly Pig Sale*

### **MONDAY 6<sup>TH</sup> JULY – EXETER LIVESTOCK CENTRE**

*Weekly Prime Stock Market*

### **TUESDAY 7<sup>TH</sup> JULY – EXETER LIVESTOCK CENTRE**

*54<sup>th</sup> Great July Fair Annual Sale of Breeding Ewes to include Show and Sale of Suffolk X Shearlings and Ram Sale to include Show & Sale for the WCSSA*

# Farms | Land | Smallholdings

## Thinking of selling?

Kivells are at the heart of the farming community throughout the westcountry and beyond and have been selling farms, land and smallholdings since 1885.



### Our tailor made service includes;

- ✓ Personal and confidential service
- ✓ Experienced team of Farm Agents
- ✓ Tailor made marketing plans across a variety of platforms
- ✓ Network of contacts within the farming community
- ✓ Added value with advice on Tax, Planning and Stewardship



In-house  
bespoke  
brochures



Over 40,000  
followers on  
Social Media



Millions of  
page views on  
kivells.com,  
Rightmove  
& Zoopla



Coverage in  
national and  
regional  
publications

With 140 years of industry experience, we pride ourselves in providing friendly and professional advice on all aspects of selling your farm, land or smallholding.

# Farms For Sale

# KIVELLS

[www.kivells.com](http://www.kivells.com)

## Oxenpark Farm Hersham, Bude

- Wonderful setting with far reaching views over Bude Bay and the North Cornish coast.
- Three bedroom farmhouse and four further cottages
- Superb range of outbuildings suitable for a variety of uses
- In all about 16.18 acres with further land available by separate negotiation.
- Freehold
- Available as a whole or in three lots
- EPC: D, C, C, C & D

**Lot 1:** Three bedroom farmhouse, two holiday cottages, one further cottage and a lodge. Range of adaptable farm buildings, income generating wind turbine and just over 16 acres.  
Guide Price: £1,395,000

**Lot 2:** A useful block of 45½ acres of pasture and arable land including 3 acres of mature woodland.  
Guide Price: £515,000

**Lot 3:** A single gently sloping pasture field extending to 6.34 acres.  
Guide Price: £85,000

**Guide Price (as a whole): £1,995,000**

**Holsworthy Farms & Land Department**  
[farms@kivells.com](mailto:farms@kivells.com) | 01409 259547



# Farms For Sale

# KIVELLS

[www.kivells.com](http://www.kivells.com)

## Vennbrook Varley Farm, PRIXFORD, Barnstaple

- 100 acre residential and stock farm
- Attractive, well proportioned bungalow (AOC)
- Useful range of livestock and storage buildings
- Ring fenced pasture land
- Superb views
- EPC C [77]

**Guide Price: £1,800,000**

**Holworthy Farms & Land Department**  
[farms@kivells.com](mailto:farms@kivells.com) | 01409 259547



# Farms For Sale

# KIVELLS

[www.kivells.com](http://www.kivells.com)

## Puddaven Farm North Bovey, Newton Abbot

- Immaculate Farmhouse
- Stunning two bedroom Holiday Cottage
- Outbuildings and stabling
- Outdoor equine menage
- Well-maintained pasture land
- Versatile lifestyle property
- Far reaching views
- In all totalling approximately 32.35 acres (13.09 hectares)
- EPC: E & D

**Guide Price: £1,695,000**

**Exeter Farms & Land Department**  
[exeter@kivells.com](mailto:exeter@kivells.com) | 01392 252262



# Farms For Sale

# KIVELLS

[www.kivells.com](http://www.kivells.com)

## Landabethick Blisland, Bodmin

- Charming, 6 bedroom detached farmhouse
- Excellent range of traditional farm buildings suitable for a variety of uses
- In all about 77 acres comprising a combination of good agricultural land and woodland
- Parking, garaging and workshop space
- Unrivalled, private position at the end of a private drive
- Freehold with vacant possession available
- EPC: D

**Guide Price: £1,350,000**

**Exeter Farms & Land Department**  
[exeter@kivells.com](mailto:exeter@kivells.com) | 01392 252262



# Farms For Sale

# KIVELLS

[www.kivells.com](http://www.kivells.com)

## Great Huish Farm Tedburn St. Mary Exeter

- Grade II Listed detached four bedroom house with three reception rooms
- Two further cottages providing income generation or multi-generation living
- Ring Fenced Farm
- Range of modern and traditional farm buildings
- Development opportunities with some planning consent in place
- Easy access to the A30 & M5
- In all about 8.92 acres of agricultural land with further land available by separate negotiation.
- EPC: C

**Guide Price: £1,295,000**

**Exeter Farms & Land Department**  
[exeter@kivells.com](mailto:exeter@kivells.com) | 01392 252262



# Farms For Sale

# KIVELLS

[www.kivells.com](http://www.kivells.com)

## North Hayne Farm Shillingford, Tiverton

- Attractive and spacious five bedroom farmhouse with extensive living accommodation
- Superb range of traditional outbuildings with potential (STP)
- Productive pastureland, woodland and river access
- In all about 37.36 acres
- Freehold with vacant possession available
- EPC: F

**Guide Price: £1,075,000**

**Exeter Farms & Land Department**  
[exeter@kivells.com](mailto:exeter@kivells.com) | 01392 252262



# Farms For Sale

# KIVELLS

[www.kivells.com](http://www.kivells.com)

## Fern Hill Farm Mount, Bodmin

- Farm with significant development potential
- Range of agricultural and equestrian buildings
- 60.29 acres of land including productive pasture
- Two bedroom lodge
- Planning for farm dwelling and residential caravan
- Located in a super rural location with far reaching valley views
- Freehold with vacant possession upon completion

**Guide Price: £1,000,000**

**Liskeard Farms & Land Department**  
[mark.bunt@kivells.com](mailto:mark.bunt@kivells.com) | 01579 345543



# Farms For Sale

# KIVELLS

[www.kivells.com](http://www.kivells.com)

## Trehere Farm Trewidland, Liskeard

- Substantial four bedroom (all en-suite) modern house enjoying extensive country views
- Range of buildings currently comprising a livery yard with potential for alternative uses
- Approximately 36.51 acres of pasture, amenity woodland and a sand school
- Wonderful rural location yet conveniently situated close to several villages and the town of Liskeard
- EPC: D

**Guide Price: £995,000**

**Liskeard Farms & Land Department**  
[mark.bunt@kivells.com](mailto:mark.bunt@kivells.com) | 01579 345543



## Rolstone Bungalow Morchard Bishop, CREDITON

- A wonderfully presented and immaculate four bedroom Bungalow, subject to an Agricultural Occupancy Condition (AOC)
- Adjacent Workshop and Office Unit
- A useful Agricultural Building
- Well maintained productive Pasture Land
- In all totalling approximately 10.74 acres (4.34 hectares)
- EPC: C

**Guide Price: £925,000**

**Exeter Farms & Land Department**  
[exeter@kivells.com](mailto:exeter@kivells.com) | 01392 252262



# Farms For Sale

# KIVELLS

[www.kivells.com](http://www.kivells.com)

## Holdstrong Farmhouse Coryton, Okehampton

- A delightful 5 bedroom 17th Century Devon Longhouse
- Situated in a beautiful rural setting on the edge of the Dartmoor National Park
- Superb views
- Stabling and further outbuildings
- Pond
- Coppice
- In all about 15.87 acres
- Freehold with vacant possession available
- EPC: E

**Guide Price: £850,000**

Exeter Farms & Land Department  
[exeter@kivells.com](mailto:exeter@kivells.com) | 01392 252262



# Farms For Sale

# KIVELLS

[www.kivells.com](http://www.kivells.com)

## Southmoor Farm Winnards Perch, St Columb

- A superbly presented residential farm in a sought-after North Cornish location
- Well presented, five bedroom detached property in fantastic condition
- Versatile outbuildings
- Productive pasture and woodland
- Sought after location with easy access to the North Cornish coastline
- In all about 33.54 acres
- EPC E [50]

**Guide Price: £825,000**

Holsworthy Farms & Land Department  
[farms@kivells.com](mailto:farms@kivells.com) | 01409 259547



# Farms For Sale

# KIVELLS

[www.kivells.com](http://www.kivells.com)

## Little Clamoak Farm Bere Ferrers, Yelverton

- Four bedroom bungalow (AOC)
- Adaptable range of farm buildings
- Sought after location
- In all approximately 26 acres
- Freehold with vacant possession available
- EPC F

**Guide Price: £725,000**

**Exeter Farms & Land Department**  
[exeter@kivells.com](mailto:exeter@kivells.com) | 01392 252 262



# Farms For Sale

# KIVELLS

[www.kivells.com](http://www.kivells.com)

## West Burrow Farm Bratton Clovelly, Okehampton

A quietly set rural small holding offering huge potential.

- Grade II\* Listed thatched farmhouse in need of modernisation.
- 3 beds, 2 receptions.
- Two adjoining traditional barns.
- Land and woodland
- EPC: Exempt as a listed property

Guide Price: £645,000

Holsworthy Farms & Land Department  
[farms@kivells.com](mailto:farms@kivells.com) | 01409 259547



# Farms For Sale

# KIVELLS

[www.kivells.com](http://www.kivells.com)

## Barton Moor Meshaw, South Molton, Devon

- Three bedroom detached bungalow (AOC)
- Range of modern farm buildings with Class Q Permission for five dwellings
- Desirable and accessible location
- Freehold with vacant possession available
- In all about 4.22 acres
- EPC: 23 Band F

**Guide Price: £495,000**

**Exeter Farms & Land Department**  
[ben.hancock@kivells.com](mailto:ben.hancock@kivells.com) | 01392 252262



# Development Site For Sale

# KIVELLS

[www.kivells.com](http://www.kivells.com)

## Development Site at Lower Newton Farm Zeal Monachorum, Crediton, Devon

- Valuable residential development opportunity
- Range of agricultural buildings with planning permission for demolition and creation of three new build, detached four and three bedroom dwellings
- Potential under extension of Permitted Development Rights for retention and conversion of the existing buildings (Clarkson's Law - Maximum 10 dwellings), subject to planning
- Additional land available

Guide Price: £450,000

Exeter Farms & Land Department  
[simon.alford@kivells.com](mailto:simon.alford@kivells.com) | 01392 252262



Aerial view looking north west

# Land For Sale

# KIVELLS

[www.kivells.com](http://www.kivells.com)

## Land At Trevillies

St. Keyne, Liskeard | Guide Price £375,000 -



Approximately 45.64 acres of productive arable/pasture land and amenity woodland with mains water connected. Freehold with vacant possession upon completion.

Liskeard Farms & Land Department  
[mark.bunt@kivells.com](mailto:mark.bunt@kivells.com) | 01579 345543

## Land at Stoke Canon

Exeter, Devon | Offers in Excess of £375,000

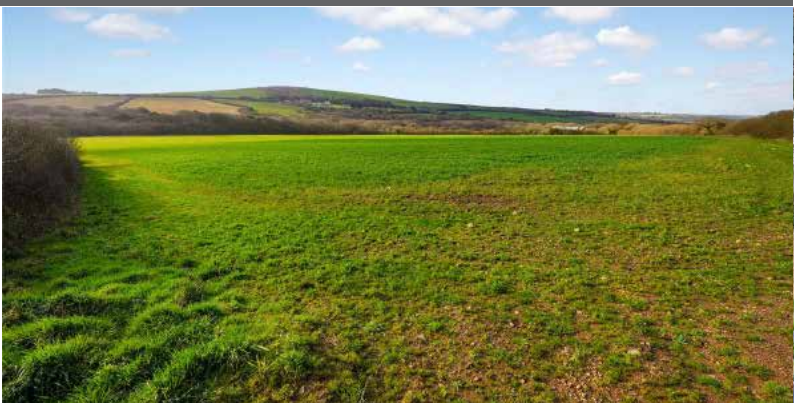


A highly productive run of level arable and pastureland with livestock handling pens extending to just under 46 acres.

Exeter Farms & Land Department  
[simon.alford@kivells.com](mailto:simon.alford@kivells.com) | 01392 252262

## Land at Criftoe Farm

Tregonetha | Guide Price £675,000 - £700,000



Approximately 64.98 acres of quality cropping land and amenity woodland and a useful modern farm building (with potential for alternative uses, subject to planning).

Liskeard Farms & Land Department  
[mark.bunt@kivells.com](mailto:mark.bunt@kivells.com) | 01579 345543

## Land Off Yorke Road

Dartmouth | Guide Price £195,000



Approximately 12.26 acres in two separate field parcels both down to permanent grassland, previously grazed with livestock.

Exeter Farms & Land Department  
[exeter@kivells.com](mailto:exeter@kivells.com) | 01392 252262

## Land at Polskeys Farm

Roche, St. Austell | Guide Price £495,000



Approximately 59.18 acres of pasture and conservation land accessible off a quiet parish road with mains water connected, a useful livestock building and yard.

Liskeard Farms & Land Department  
[mark.bunt@kivells.com](mailto:mark.bunt@kivells.com) | 01579 345543

## Land at Four Beeches Farm

Sourton, Okehampton | Guide Price £224,000



Approximately 26.25 acres of productive pasture land with easy access to the A386. Suitable for amenity, equestrian and traditional farming.

Exeter Farms & Land Department  
[exeter@kivells.com](mailto:exeter@kivells.com) | 01392 252262

## Land at Higher Reedy Mill

Trewidland, Liskeard | Guide Price £50,000



Approximately 4.39 acres of pasture land, accessible off a quiet parish road close to the village of Trewidland in a quiet rural location with far reaching views.

Liskeard Farms & Land Department  
[mark.bunt@kivells.com](mailto:mark.bunt@kivells.com) | 01579 345543

## Land & Buildings at Horwood

Horwood, Bideford



A fantastic block of just over 166 ½ acres of productive arable land and a useful range of modern agricultural buildings. **Available in two lots.**

- **LOT 1:** Just over 132 acres of arable land with a range of modern and adaptable farm buildings.  
**Guide Price: £1,600,000**
- **LOT 2:** Circa 34 ½ acres of arable land in a single level field.  
**Guide Price: £400,000**

Holsworthy Farms & Land Agency  
[farms@kivells.com](mailto:farms@kivells.com) | 01409 259547

## Land located at Wrigwell

Bickington, Newton Abbot



A fantastic block of productive arable land, well located and with excellent road access. Located just 2 miles east of the A38 Devon Expressway and bordered by the river Lemon, the land is suited for farming, conservation or amenity uses. **Available as a whole or in three lots.**

- **LOT 1:** Approximately 28.59 acres forming a single large field parcel with direct access to the public highway from the north. **Guide Price: £315,000**
- **LOT 2:** Approximately 9.19 acres forming a single gently sloping parcel. Access to the field is available from the south or north directly off the public highway. **Guide Price: £100,000**
- **LOT 3:** Approximately 7.19 acres and comprises of a level field parcel with the River Lemon forming the parcels northern edge. Access is available to the west directly off the public highway. **Guide Price: £85,000**
- **As a whole:** Approximately 44.97 acres of productive arable land. **Guide Price: £500,000**

Exeter Farms & Land Agency  
exeter@kivells.com | 01392 252262

# Land & Buildings For Rent

**GENERAL PURPOSE BUILDING TO LET**  
Stourscombe, Launceston | £595 pcm



A new 45' x 30' shed at Stourscombe near Launceston, with great access to A30/A388. Ideal for storage.

Thomas Rattray  
thomas.rattray@kivells.com | 07813 016804

# Land for Auction

## Wednesday 27th May, 7.00pm

Venue: Lifton Strawberry Fields, Lifton, Devon PL16 0DE

# KIVELLS

[www.kivells.com](http://www.kivells.com)

### Penloe Field

Woolley, Bude | Auction Guide Price £65,000 - £75,000  
For sale by public auction - Wednesday 27th May



Approximately 5.59 acres in a quiet rural setting with lovely views and a useful open sided storage building - 27' x 15' (8.23m x 4.57m) with a rain water harvest tank to one side.

Holsworthy Farms & Land Agency  
[Farms@kivells.com](mailto:Farms@kivells.com) | 01409 259547

### Land at Ugworthy

Chilsworthy, Holsworthy | Auction Guide Price £45,000 - £50,000  
For sale by public auction - Wednesday 27th May



Extending to some 5.67 acres, the Land at Ugworthy comprises a mainly level pasture field with natural hedge bank boundaries and a small corrugated sheet clad shed (in poor repair) and an ancient burial ground.

Holsworthy Farms & Land Agency  
[Farms@kivells.com](mailto:Farms@kivells.com) | 01409 259547

### Land at Milton Damarel

Holsworthy | Auction Guide Price £20,000  
For sale by public auction - Wednesday 27th May



This pretty 2.42 acre field comprises a mainly level paddock which benefits from excellent access from the adjoining main road on its northern boundary. The land would be suitable for amenity purposes, keeping livestock or ponies.

Holsworthy Farms & Land Agency  
[Farms@kivells.com](mailto:Farms@kivells.com) | 01409 259547

### Land at Broad Parkham

Parkham, Bidford I | Auction Guide Price £75,000 - £85,000  
For sale by public auction - Wednesday 27th May



Some 8.50 acres benefiting from road frontage and excellent access. The land comprises a very gently sloping pasture field which is enclosed within natural hedge banks.

Holsworthy Farms & Land Agency  
[Farms@kivells.com](mailto:Farms@kivells.com) | 01409 259547

### Land West of Wainhouse Corner

St. Gennys, Bude | Auction Guide Price £140,000 - £150,000  
For sale by public auction - Wednesday 27th May



A useful block of just over 15.5 acres of pasture land, with excellent access from the adjoining main road. The land is very gently sloping and extremely well fenced.

Holsworthy Farms & Land Agency  
[Farms@kivells.com](mailto:Farms@kivells.com) | 01409 259547

### Land at Furzedon Field

Trewidland, Liskeard | Auction Guide Price £110,000 - £115,000  
For sale by public auction - Wednesday 27th May



Approximately 13.80 acres of pasture land in a ring fence block with a woodland stream boundary and fringe and mains water connected to three troughs.

Liskeard Farms & Land Agency  
[mark.bunt@kivells.com](mailto:mark.bunt@kivells.com) | 01579 345543

# Land for Auction

Wednesday 27th May, 7.00pm

Venue: Lifton Strawberry Fields, Lifton, Devon PL16 0DE

# KIVELLS

[www.kivells.com](http://www.kivells.com)

## Land at St Keyne

Liskeard | Auction Guide Price £5,000 - £10,000

For sale by public auction - Wednesday 27th May



Approximately 0.40 acres of woodland and amenity land accessible off a quiet parish road, in a picturesque valley location with a woodland stream running through.

Liskeard Farms & Land Agency

[mark.bunt@kivells.com](mailto:mark.bunt@kivells.com) | 01579 345543

## Land at Kelynack

St. Just, Penzance | Auction Guide Price £130,000

For sale by public auction - Wednesday 27th May



An excellent opportunity to purchase a 13.54 acre block of predominantly level agricultural land in a superb position, just inland from the West Cornish coastline.

Holsworthy Farms & Land Agency

[Farms@kivells.com](mailto:Farms@kivells.com) | 01409 259547

## 2026 Auction Dates

Wednesday 27th May

Wednesday 24th June

Wednesday 29th July

Wednesday 2nd September

Wednesday 7th October

Wednesday 11th November

Thinking of selling by auction? Contact our experienced team today for a **FREE** no obligation auction appraisal.

[www.kivells.com](http://www.kivells.com)

# Previous Auction Results

Wednesday 22nd April, 7.00pm

# KIVELLS

[www.kivells.com](http://www.kivells.com)

## Trefuge Bungalow Coads Green, Launceston, Cornwall

- For sale by Public Auction on Wednesday 22nd April, 7.00pm at Lifton Strawberry Fields, Lifton, Devon PL16 0DH
- Three bedroom bungalow of non traditional construction and in need of updating
- Set in just over 5 acres of gently sloping pasture
- Useful Nissen hut storage shed
- Lovely quiet rural setting with superb moorland views
- EPC = E (46)

Auction Guide Price: £250,000  
SOLD: £358,000

Holsworthy Farms & Land Department  
[farms@kivells.com](mailto:farms@kivells.com) | 01409 259547



# Previous Auction Results

Wednesday 22nd April, 7.00pm

# KIVELLS

www.kivells.com

## Land & Yard known as Tall Trees

Kit Hill, Callington | Auction Guide Price £25,000  
SOLD: £56,000



A great opportunity to acquire a yard, building and 1¼ acres in need of upgrading. Road frontage and good access.

Holsworthy Farms & Land Agency  
Farms@kivells.com | 01409 259547

## Land at Sladelands Farm

Botus Fleming, | Auction Guide Price £130,000 - £140,000  
SOLD: £140,000



Approximately 9.95 acres of pasture, amenity and woodland and a range of buildings currently providing a stable yard. The land is accessible off a quiet parish road and has mains electricity and mains water available.

Liskeard Farms & Land Agency  
mark.bunt@kivells.com | 01579 345543

## Land lying north of The Pastures

Bratton Clovelly | Auction Guide Price £50,000 - £75,000  
SOLD: £68,000



2.11 acres of pasture land, great for livestock grazing or as a pony paddock. Some long term potential, subject to gaining the necessary planning consents.

Holsworthy Farms & Land Agency  
Farms@kivells.com | 01409 259547

## Land & Buildings at Klymiarven

Tintage | Auction Guide Price £175,000 - £195,000  
SOLD: £275,000



Approximately 13.25 acres of level pasture land with a small range of buildings and yard. The land is situated in a great location in the village, not far from the North Cornish coast.

Holsworthy Farms & Land Agency  
Farms@kivells.com | 01409 259547

## Land at Yonder Park

Ebberley, Torrington | Auction Guide Price £295,000 - £315,000  
SOLD: £315,000



A fantastic block of approximately 31.42 acres of arable land, divided into four good sized fields and benefiting from good access from the adjoining parish road and far reaching countryside views.

Holsworthy Farms & Land Agency  
Farms@kivells.com | 01409 259547

## Land at Lower Wringworthy

Morval, Looe | Auction Guide Price £90,000 - £95,000  
SOLD: £95,000



Approximately 10.09 acres comprising two very gently sloping enclosures of permanent pasture accessible off a quiet parish road. The land has previously been used for livestock grazing and forage conservation purposes.

Liskeard Farms & Land Agency  
mark.bunt@kivells.com | 01579 345543

# Farms Sale Agreed

# KIVELLS

[www.kivells.com](http://www.kivells.com)

## Keymelford Farm Buildings & Land Keymelford, Colebrook, Crediton, Devon



**Lot 1** - Agricultural buildings and yard area with land surrounding extending to 0.41 acres.  
**Guide Price: £150,000**

**Lot 2** - Agricultural building with concrete pad and land surrounding extending to 0.41 acres.  
**Guide Price: £135,000**

**Lot 3** - A small grassland area extending to approximately 0.14 acres. **Guide Price: £25,000**

**Exeter Farms & Land Agency**  
[exeter@kivells.com](mailto:exeter@kivells.com) | 01392 252262

## Tor Court Farm Torbryan, Newton Abbot



- Four bedroom, Grade II Listed farmhouse
- Stone barns and a modern agricultural building with potential for alternative uses (stp)
- A truly hidden gem located in a peaceful yet accessible location
- Stunning, well-maintained pasture, orchards and woodland
- In all approximately 67.43 acres (27.28 hectares)

**Guide Price: £1,210,000**

**Exeter Farms & Land Department**  
[ian.caunter@kivells.com](mailto:ian.caunter@kivells.com) | 01392 252262

# Farms Sale Agreed

# KIVELLS

[www.kivells.com](http://www.kivells.com)

**Sandenbury**  
Tregadillett, Launceston



- Smallholding in a lovely rural, yet accessible location
- Three bedroom bungalow (AOC) in need of modernising
- Range of pole barns
- Just over 40 acres of pasture land including some woodland
- A fantastic blank canvas
- EPC: D

Guide Price: £650,000

**Holworthy Farms & Land Department**  
[farms@kivells.com](mailto:farms@kivells.com) | 01409 259547

**Sensham Farm**  
Marhamchurch, Bude



- Substantial modern farmhouse and separate first floor flat, both in need of modernisation
- Range of adaptable farm buildings with stabling
- Set in some 57 acres
- Not far from the North Cornish coast
- EPCs: D and F

Guide Price: £1,600,000

**Holworthy Farms & Land Department**  
[farms@kivells.com](mailto:farms@kivells.com) | 01409 259547

# Farms Sale Agreed

# KIVELLS

[www.kivells.com](http://www.kivells.com)

**East Coombe Farm**  
St. Pinnock, Liskeard



- Three bedroom, two bathroom, three reception room character detached house
- Splendid private location, with far reaching rural views
- Outbuildings with significant potential for alternative uses
- Located in rural East Cornwall between the wide expanses of Bodmin Moor and the South Cornish coastline
- In all 45.50 acres of land and woodland
- EPC: E & D

**Guide Price: £900,000**

**Liskeard Farms & Land Department**  
[liskeard@kivells.com](mailto:liskeard@kivells.com) | 01579 345543

# Land Sale Agreed

# KIVELLS

www.kivells.com

## Land off Blackacre Lane St Columb | Guide Price £150,000 - £155,000



Approx 12.87 acres comprising a single enclosure of gently sloping land currently in a temporary ley. In recent years has been used for arable and vegetable growing purposes.  
Liskeard Farms & Land Agency  
mark.bunt@kivells.com | 01579 345543

## Land at Viverdon Down St. Mellion, Saltash | Guide Price £465,000



Just under 45 acres of productive pasture land in a very accessible location with lovely far reaching views.  
Holsworthy Farms & Land Agency  
farms@kivells.com | 01409 259547

## Land forming Part Oldsbrim Lot 1 Poundsgate, Newton Abbot | Guide Price £150,000



Approximately 26.19 acres incorporating a block of permanent grassland together with areas of rough grazing.  
Exeter Farms & Land Department  
ian.caunter@kivells.com | 01392 252262

## Land forming Part Oldsbrim Lot 2 Poundsgate, Newton Abbot | Guide Price £75,000



Approximately 12.62 acres incorporating three immaculate field parcels down to permanent pasture.  
Exeter Farms & Land Department  
ian.caunter@kivells.com | 01392 252262

## Land at Upton Farm Lot 1 Delabole | Guide Price £500,000



Approx. 39.59 acres comprising a ring fence block of level or very gently sloping land currently in arable and temporary pastures contained in large, easy working, enclosures.  
Liskeard Farms & Land Department  
mark.bunt@kivells.com | 01579 345543

## Land at Upton Farm Lot 2 Delabole | Guide Price £1,050,000



Approx. 88.25 acres comprising a block of level or very gently sloping land currently in arable and temporary pastures.  
Liskeard Farms & Land Department  
mark.bunt@kivells.com | 01579 345543

# Land Sale Agreed

# KIVELLS

www.kivells.com

## Land at Chudleighs Barn Holding Liskeard | Guide Price £100,000 - £125,000



Approximately 20.19 acres of pasture and amenity land with pretty stream frontage and some woodland included.  
Liskeard Farms & Land Department  
mark.bunt@kivells.com | 01579 345543

## Land at Huxhill Weare Giffard, Bideford | Guide Price £550,000



A productive run of good quality arable and pasture land in a favoured location extending to approximately 49.38 acres.  
Exeter Farms & Land Department  
ben.hancock@kivells.com | 07760 887581

## Tregovenek Bungalow, Attwood Lane, Pensilva, Liskeard, Cornwall PL14 5QU

Kivells have been instructed to market Tregovenek, a detached three/four bedroom bungalow in a quiet rural location, close to the village of Bolventor, with good size outside space. The bungalow is subject to an Agricultural Occupancy Condition.

Enquiries to W M Bunt BSc MRICS FAAV, Kivells, 7-8 Bay Tree Hill, Liskeard, Cornwall PL14 4BE

Tel: 01579 345543 or 07879 640970. Email: mark.bunt@kivells.com.