



EXETER LIVESTOCK CENTRE

MARKET REPORT MAY 2026

Monday 25th May – Prime Stock Market



Your **Development Land and Planning Team** here at Kivells have housebuilders and developers who are interested in the right sites – from small family run builders who are looking for just 10 plots to large national housebuilders who want sites for 100 plus houses.

If you own land on the edge of a large village or town with good access and road frontage, we would be delighted to chat with you about your land and if there is a chance of planning for housing development in the future. With the recent reforms to the planning system, this could be an opportunity to add value to your land that could work harder for you.



Contact your Development Land & Planning Team today to discuss your options.



Oliver Keates BSc (Hons)
Dip TP, MRTPI
Head of Development Land
and Planning Services
07554 060370



Mark Bromell BSc (Hons)
MRICS FAAV FLAA
Director
07966 430001



Mark Bunt
BSc MRICS FAAV
Director
07879 640970



Simon Alford
Director
07789 980203



Thomas Ratray
BSc (Hons) MRICS FAAV
Director
07813 016804



Claire Quick
BSc (Hons) MRICS FAAV
Rural Chartered Surveyor
07789 980204



Ian Caunter BSc (Hons)
MRICS FAAV FLAA
Rural Chartered Surveyor
07813 068935



Sam Turner
MNAEA
Director
07951 240305



Daniel Stokes
MNAEA
Director
07581 006203

GREEN LANE RURAL SERVICES Ltd

HEDGING & FENCING CONTRACTORS

01884 698902



Monday 25th May

25 PRIME CATTLE AND CULL COWS – 10:45 AM

Auctioneer: Simon Alford – 07789 980203

Prime Cattle to £2359 & 375ppk – Cull Cows to £2130 & 290ppk

A much reduced Bank Holiday entry of prime and cull cattle saw best finished steers rise to £2359 (630kg x 375ppk) given for a well-bred and fed British Blonde from Adrian and Bradley Bowden in from Drewsteignton followed by the better of a pair of smart British Blue bullocks from David Slade from Chagford which came back at £2294 (666kg x 345ppk). Also, a neat 598kg Limousin bred steers from Adrian and Bradley Bowden drew 342ppk and £2042. Prime Blue heifers headed that section when returning £2160 (646kg x 335ppk) and £2129 (618kg x 345ppk) for Keith and Hilary Harvey of Bovey Tracey whilst David Slade saw his Blue heifer realise £2052 (608kg x 338ppk). Hereford females from N & H Tope of Blackawton reached £2019 (602kg x 336ppk). Adrian and Bradley Bowden were back when selling top prices cull cow of the day with their grand British Blonde racking up £2130 (736kg x 290ppk) followed by an eye catching Beef Shorthorn at £1864 (772kg x 242ppk) from Richard Stringer of Moretonhampstead. Devon bred cows from Adrian Pike in from Nymet Rowland eased to £1670 with British Blues selling to £1541 (736kg x 210ppk) for Christopher Lee of Farway and dairy bred sorts sold to £1469 (744kg x 198ppk) for Messrs Gaden & Son of Bratton Clovelly with their better of a decent run of Friesians.

6555 SHEEP – 09.30 AM

Auctioneer: Russell Steer 07788 318701

**Spring Lambs to £229 & 475ppk
Mature Sheep to £215 & 395ppk**

**Prime Hogs to £232 & 440ppk
Cull Ewes to £300 & Rams to £230**

“The Exeter sheep train keeps on chugging with another 5777 to follow up last week’s 6500 sheep day.”

3200 PRIME SPRING LAMBS

Last week we had just over 3300 lambs this week we were only 100 less at a straight 3200 prime spring lambs and with two main buyers missing in action trade was actually surprisingly strong and some 50 pence per kilo in front of others regionally to leave an SQQ of 452ppk, being just 13p less on the week. Tom Yandle of Oxton topping the sale at £229 with overweights whilst he and two others had 52’s at £219 and Trevor Selway of Sidmouth also with 51’s at £219. A tremendous show of lambs in general with lots of business on the 45kg + lambs top side of £200 with 47’s to £209.50 for Rob Pike of Preston Bowyer, 46’s to £207 for Keith Pook of Galmpton and 45’s to £205.50 for the Stowell Family down from Clevedon, Bristol who also had 44’s at £201. 42’s to £197.50 for both Geoff Arscott and Family of Chagford and Rob Pike again as 41’s sold to £194.50 (474ppk) for both Syles Farm of Loxbeare and Tom Yandle. 40kg lambs provided the top per kilo of 475ppk when making £190 apiece for both Dave & Michelle Wootton of Ashreigney and Calhayes Farm Partners of Luppitt with more 40kgs at £189.50 for Rodney & Carol Cleave of Denbury. Best of the 39kgs going to Wellington farmers Paul Heard and Family and also Jack Enticott and Family with others at £181 for Steve Hyde of Calverleigh. 38’s to £173 for a triple pen from the Chudley Family of South Molton and 36’s to £167 for a double pen from Richard Pratt of Honiton. SQQ 452ppk, overall average of 447ppk and £193 per head is just £3 less on the week. Congratulations all vendors and thank you for your patience on another busy day.

**** VAN or Farm Assurance NOW A MUST FOR ALL SPRING LAMB PRODUCERS please with all major firms requiring one or the other. Without it you are severely disadvantaged!****

**** Please remember VAN’s only last a year – please make sure your’s is up to date. ****

739 PRIME HOGGS & 385 MATURE SHEEP

Another four figure entry and although nowhere near the quality of last weeks entry trade was within a pound or two of last week's trade without the standout lots on offer. Overweights averaged £207 and peaked at £232 for the Player Family of Thorverton followed by both Eric Palmer of Thurlestone and Johns Farm of Newton Abbot at £230 and Johnson Partners of Chard at £222. The Bailey Family of Bridport had a double pen of 52kg hoggs fly to £217 as well as another pen at £211, a price matched by Phil Hopkins of Offwell with smart 49's equating to 431ppk. 47's to £199 again for the Bailey Family with a double pen whilst R Martin of Talaton sold a bunch of 33 Dorset hoggs weighing 45kgs and penned in the old ram ring but taking no harm at £197.50 and Steve Parish of Uffculme had a double pen of shorn 43kg hoggs at £189 and a sale topping 440ppk. Plenty of business either side of £4 with an abundance of lean and hill bred hoggs just hampering the SQQ here today at 392ppk with an overall average of 379ppk and £189 per head.

Toothers to £215 for Nick Harris of Bridport with plenty of others either side of £200 with a top per kilo of 395ppk going to 43kg Beltex from Rich Bond of Blackawton at £170.

1979 CULL EWES & 54 RAMS

We didn't want 2000 ewes again this week knowing we were going to be a buyer short, we ended up being two buyers short but trade on the whole no worse than feared with others customers fit to take the 1452 penned. Topping the sale at £300 was a stand out Texel from Ross and Gemma Edwards of Stockwood with others from this home at £240 and

£240 also for Tom Proll of Burlescombe with a Texel as Derek White of Dalwood made £248 of his Texel and £230 of a CharTex. Charollais ewes to £220 for the Steer Family of Ashburton, £212 for Charollais bred wethers from Eric Palmer and David Pratt of Huntsham had a Rouge at £210. Biggest and best Suffolk crosses getting towards £200 with Tom Heal of Bridgwater with a big pen at £199 and PJ Stanbury of Bow with similar at £196 and the Retter Family of Cheriton Bishop at £195. Mules similar with the best touching £180 and plenty of business £155 to £165 and the best of the hill ewes being Cheviots regularly in the £150's reaching £160 for Michael Reddaway & Family of Sampford Courtenay. An abundance of half meat and plainer type hill ewes with the worser end back in the £60's and £70's whilst the better end were usually £110 to £125. Ewes averaged £150 whilst the boys leveled at £175 with the best of these at £230 for Rich Rossiter and Family of Kingsbridge, £218 for Tripp Bros of Dunsford and £210 for both Julian Bowen of Lifton and Will Warren of South Brent.

**** Next week could be a case of trying to sell Turkeys on boxing day so keep in touch before procuring any big numbers. ****

PRIME LAMBS					
Weight	No.	Top £'s	Top ppk	Av. £'s	Av. ppk
25-31	10	108.00	400	107.20	390
32-39	317	182.00 (-17.00)	467 (-46)	170.23 (-9.84)	450 (-28)
40-45	2332	205.50 (-3.50)	475 (-35)	190.96 (-4.85)	452 (-11)
46-52	511	219.00 (-3.00)	450 (~)	204.47 (-0.03)	427 (-3)
53+	30	229.00 (-3.00)	419 (-11)	213.43 (-2.70)	391 (+5)
PRIME HOGGS					
17-39	239	159.00 (-8.00)	418 (-13)	121.50 (-19.85)	366 (-31)
40-45	233	197.50 (+2.50)	440 (-4)	175.20 (-1.07)	406 (-2)
46-52	122	217.00 (+2.00)	431 (-5)	199.12 (+5.56)	401 (+2)
53+	145	232.00 (-14.00)	391 (-44)	207.22 (-12.99)	345 (-22)
MATURE SHEEP	385	215.00 (-25.00)	395 (+14)	172.20 (-11.90)	322 (+11)
		Top		Average	
EWES	1407	£300 (-48)		£149.87 (-22.37)	
RAMS	45	£230 (-65)		£170.42 (+33.67)	

37TH ANNUAL SALE OF STANDING STRAW

Entries Invited

EXETER LIVESTOCK CENTRE



ENTRIES CLOSE
FRIDAY
5TH JUNE 2026



SALE DATE
FRIDAY
19TH JUNE 2026



SALE AT APPROX.
12.30PM

PLEASE CONTACT EXETER LIVESTOCK CENTRE OR IAN CAUNTER
FOR MORE DETAILS & ENTRY FORMS OR VISIT OUR WEBSITE

07813 068395 | 01392 251261 | EXETER@KIVELLS.COM | WWW.KIVELLS.COM

KIVELLS

www.kivells.com


Penbode
Farm Vets



- Competitively priced farm medicines
- Dairy and beef fertility clubs

- 24/7/365 veterinary cover
- Livestock fertility testing and advice

- VetTech services
- In-house labs and lambing bays

www.penbodevets.co.uk

Holsworthy | Bradworthy | Stratton | Launceston | Camelford

MyFarmWorks

Brought to you by

Shearwell
Data

Livestock Systems

DEMO EVENT

Join us at our
MyFarmWorks
Demo Event –
we'd love to see
you there!



Meet your local rep
Hollie Govier

Exeter Livestock Centre

Friday 29th May | 10am-1pm
Matford Park Road, Exeter, Devon, EX2 8FD

FORTHCOMING SALES

MONDAY 25TH MAY – EXETER LIVESTOCK CENTRE

Weekly Prime Stock Market

FRIDAY 29TH MAY – EXETER LIVESTOCK CENTRE

Weekly Store Market to include Monthly Sale of Organic Cattle & Sheep, Monthly Catalogued Sale of Beef Breeding Stock including the Show and Sale of Cattle for the South Devon Breeders Club plus Sale of Dairy Cattle plus Catalogued Sale of Hogg Couples plus Fortnightly Pig Sale (please note change of date for this sale).

MONDAY 1ST JUNE – EXETER LIVESTOCK CENTRE

Weekly Prime Stock Market

FRIDAY 5TH JUNE – EXETER LIVESTOCK CENTRE

Weekly Store Market to include Fortnightly Pig Sale

MONDAY 8TH JUNE – EXETER LIVESTOCK CENTRE

Weekly Prime Stock Market

FRIDAY 12TH JUNE – EXETER LIVESTOCK CENTRE

Weekly Store Market to include Sale of Dairy Cattle plus 38th Annual June Sale of Early Breeding Ewes & Rams including Show & Sale of Dorset X Breeding Ewes.

MONDAY 15TH JUNE – EXETER LIVESTOCK CENTRE

Weekly Prime Stock Market

FRIDAY 19TH JUNE – EXETER LIVESTOCK CENTRE

Weekly Store Market to include 1st Weekly Sale of Store Lambs, Monthly Catalogued Sale of Beef Breeding Stock, Fortnightly Pig Sale and Collective Standing Straw Sale.

MONDAY 22ND JUNE – EXETER LIVESTOCK CENTRE

Weekly Prime Stock Market

FRIDAY 26TH JUNE – EXETER LIVESTOCK CENTRE

Weekly Store Market to include Monthly Sale of Organic Cattle and Sheep, Sale of Dairy Cattle

MONDAY 29TH JUNE – EXETER LIVESTOCK CENTRE

Weekly Prime Stock Market

TUESDAY 30TH JUNE – EXETER LIVESTOCK CENTRE

Monthly Sale of TB Restricted (Orange Market) Cattle

FRIDAY 3RD JULY – EXETER LIVESTOCK CENTRE

Weekly Store Market to include Fortnightly Pig Sale

MONDAY 6TH JULY – EXETER LIVESTOCK CENTRE

Weekly Prime Stock Market

TUESDAY 7TH JULY – EXETER LIVESTOCK CENTRE

54th Great July Fair Annual Sale of Breeding Ewes to include Show and Sale of Suffolk X Shearlings and Ram Sale to include Show & Sale for the WCSSA

Farms | Land | Smallholdings

Thinking of selling?

Kivells are at the heart of the farming community throughout the westcountry and beyond and have been selling farms, land and smallholdings since 1885.



Our tailor made service includes;

- ✓ Personal and confidential service
- ✓ Experienced team of Farm Agents
- ✓ Tailor made marketing plans across a variety of platforms
- ✓ Network of contacts within the farming community
- ✓ Added value with advice on Tax, Planning and Stewardship



In-house
bespoke
brochures



Over 40,000
followers on
Social Media



Millions of
page views on
kivells.com,
Rightmove
& Zoopa



Coverage in
national and
regional
publications

With 140 years of industry experience, we pride ourselves in providing friendly and professional advice on all aspects of selling your farm, land or smallholding.

Oxenpark Farm Hersham, Bude

- Wonderful setting with far reaching views over Bude Bay and the North Cornish coast.
- Three bedroom farmhouse and four further cottages
- Superb range of outbuildings suitable for a variety of uses
- In all about 16.18 acres with further land available by separate negotiation.
- Freehold
- Available as a whole or in three lots
- EPC: D, C, C, C & D

Lot 1: Three bedroom farmhouse, two holiday cottages, one further cottage and a lodge. Range of adaptable farm buildings, income generating wind turbine and just over 16 acres.
Guide Price: £1,395,000

Lot 2: A useful block of 45½ acres of pasture and arable land including 3 acres of mature woodland.
Guide Price: £515,000

Lot 3: A single gently sloping pasture field extending to 6.34 acres.
Guide Price: £85,000

Guide Price (as a whole): £1,995,000

Holsworthy Farms & Land Department
farms@kivells.com | 01409 259547



Farms For Sale

KIVELLS

www.kivells.com

Vennbrook Varley Farm, PRIXFORD, Barnstaple

- 100 acre residential and stock farm
- Attractive, well proportioned bungalow (AOC)
- Useful range of livestock and storage buildings
- Ring fenced pasture land
- Superb views
- EPC C [77]

Guide Price: £1,800,000

Holsworthy Farms & Land Department
farms@kivells.com | 01409 259547



Farms For Sale

KIVELLS

www.kivells.com

Puddaven Farm North Bovey, Newton Abbot

- Immaculate Farmhouse
- Stunning two bedroom Holiday Cottage
- Outbuildings and stabling
- Outdoor equine menage
- Well-maintained pasture land
- Versatile lifestyle property
- Far reaching views
- In all totalling approximately 32.35 acres (13.09 hectares)
- EPC: E & D

Guide Price: £1,695,000

Exeter Farms & Land Department
exeter@kivells.com | 01392 252262



Farms For Sale

KIVELLS

www.kivells.com

Landabethick Blisland, Bodmin

- Charming, 6 bedroom detached farmhouse
- Excellent range of traditional farm buildings suitable for a variety of uses
- In all about 77 acres comprising a combination of good agricultural land and woodland
- Parking, garaging and workshop space
- Unrivalled, private position at the end of a private drive
- Freehold with vacant possession available
- EPC: D

Guide Price: £1,350,000

Exeter Farms & Land Department
exeter@kivells.com | 01392 252262



Farms For Sale

KIVELLS

www.kivells.com

Great Huish Farm Tedburn St. Mary Exeter

- Grade II Listed detached four bedroom house with three reception rooms
- Two further cottages providing income generation or multi-generation living
- Ring Fenced Farm
- Range of modern and traditional farm buildings
- Development opportunities with some planning consent in place
- Easy access to the A30 & M5
- In all about 8.92 acres of agricultural land with further land available by separate negotiation.
- EPC: C

Guide Price: £1,295,000

Exeter Farms & Land Department
exeter@kivells.com | 01392 252262



Farms For Sale

KIVELLS

www.kivells.com

North Hayne Farm Shillingford, Tiverton

- Attractive and spacious five bedroom farmhouse with extensive living accommodation
- Superb range of traditional outbuildings with potential (STP)
- Productive pastureland, woodland and river access
- In all about 37.36 acres
- Freehold with vacant possession available
- EPC: F

Guide Price: £1,075,000

Exeter Farms & Land Department
exeter@kivells.com | 01392 252262



Farms For Sale

KIVELLS

www.kivells.com

Fern Hill Farm Mount, Bodmin

- Farm with significant development potential
- Range of agricultural and equestrian buildings
- 60.29 acres of land including productive pasture
- Two bedroom lodge
- Planning for farm dwelling and residential caravan
- Located in a super rural location with far reaching valley views
- Freehold with vacant possession upon completion

Guide Price: £1,000,000

Liskeard Farms & Land Department
mark.bunt@kivells.com | 01579 345543



Farms For Sale

KIVELLS

www.kivells.com

Trehere Farm Trewidland, Liskeard

- Substantial four bedroom (all en-suite) modern house enjoying extensive country views
- Range of buildings currently comprising a livery yard with potential for alternative uses
- Approximately 36.51 acres of pasture, amenity woodland and a sand school
- Wonderful rural location yet conveniently situated close to several villages and the town of Liskeard
- EPC: D

Guide Price: £995,000

Liskeard Farms & Land Department
mark.bunt@kivells.com | 01579 345543



Rolstone Bungalow Morchard Bishop, Crediton

- A wonderfully presented and immaculate four bedroom Bungalow, subject to an Agricultural Occupancy Condition (AOC)
- Adjacent Workshop and Office Unit
- A useful Agricultural Building
- Well maintained productive Pasture Land
- In all totalling approximately 10.74 acres (4.34 hectares)
- EPC: C

Guide Price: £925,000

Exeter Farms & Land Department
exeter@kivells.com | 01392 252262



Farms For Sale

KIVELLS

www.kivells.com

Holdstrong Farmhouse Coryton, Okehampton

- A delightful 5 bedroom 17th Century Devon Longhouse
- Situated in a beautiful rural setting on the edge of the Dartmoor National Park
- Superb views
- Stabling and further outbuildings
- Pond
- Coppice
- In all about 15.87 acres
- Freehold with vacant possession available
- EPC: E

Guide Price: £850,000

Exeter Farms & Land Department
exeter@kivells.com | 01392 252262



Farms For Sale

KIVELLS

www.kivells.com

Southmoor Farm Winnards Perch, St Columb

- A superbly presented residential farm in a sought-after North Cornish location
- Well presented, five bedroom detached property in fantastic condition
- Versatile outbuildings
- Productive pasture and woodland
- Sought after location with easy access to the North Cornish coastline
- In all about 33.54 acres
- EPC E [50]

Guide Price: £825,000

Holsworthy Farms & Land Department
farms@kivells.com | 01409 259547



Farms For Sale

KIVELLS

www.kivells.com

Little Clamoak Farm Bere Ferrers, Yelverton

- Four bedroom bungalow (AOC)
- Adaptable range of farm buildings
- Sought after location
- In all approximately 26 acres
- Freehold with vacant possession available
- EPC F

Guide Price: £725,000

Exeter Farms & Land Department
exeter@kivells.com | 01392 252 262



Farms For Sale

KIVELLS

www.kivells.com

West Burrow Farm Bratton Clovelly, Okehampton

A quietly set rural small holding offering huge potential.

- Grade II* Listed thatched farmhouse in need of modernisation.
- 3 beds, 2 receptions.
- Two adjoining traditional barns.
- Land and woodland
- EPC: Exempt as a listed property

Guide Price: £645,000

Holsworthy Farms & Land Department
farms@kivells.com | 01409 259547



Farms For Sale

KIVELLS

www.kivells.com

Barton Moor Meshaw, South Molton, Devon

- Three bedroom detached bungalow (AOC)
- Range of modern farm buildings with Class Q Permission for five dwellings
- Desirable and accessible location
- Freehold with vacant possession available
- In all about 4.22 acres
- EPC: 23 Band F

Guide Price: £495,000

Exeter Farms & Land Department
ben.hancock@kivells.com | 01392 252262



Development Site For Sale

KIVELLS

www.kivells.com

Development Site at Lower Newton Farm Zeal Monachorum, Crediton, Devon

- Valuable residential development opportunity
- Range of agricultural buildings with planning permission for demolition and creation of three new build, detached four and three bedroom dwellings
- Potential under extension of Permitted Development Rights for retention and conversion of the existing buildings (Clarkson's Law - Maximum 10 dwellings), subject to planning
- Additional land available

Guide Price: £450,000

Exeter Farms & Land Department
simon.alford@kivells.com | 01392 252262



Aerial view looking north west

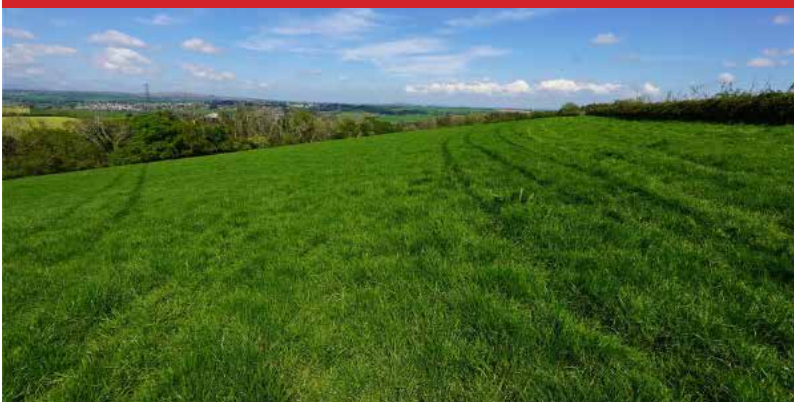
Land For Sale

KIVELLS

www.kivells.com

Land At Trevillies

St. Keyne, Liskeard | Guide Price £375,000 -



Approximately 45.64 acres of productive arable/pasture land and amenity woodland with mains water connected. Freehold with vacant possession upon completion.

Liskeard Farms & Land Department
mark.bunt@kivells.com | 01579 345543

Land at Stoke Canon

Exeter, Devon | Offers in Excess of £375,000



A highly productive run of level arable and pastureland with livestock handling pens extending to just under 46 acres.

Exeter Farms & Land Department
simon.alford@kivells.com | 01392 252262

Land at Criftoe Farm

Tregonetha | Guide Price £675,000 - £700,000

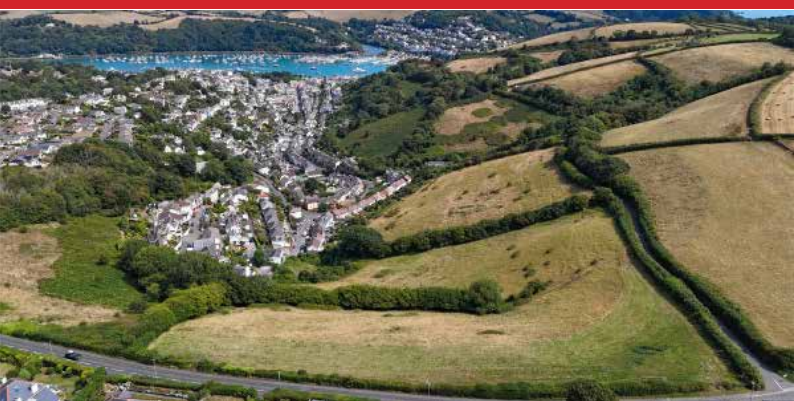


Approximately 64.98 acres of quality cropping land and amenity woodland and a useful modern farm building (with potential for alternative uses, subject to planning).

Liskeard Farms & Land Department
mark.bunt@kivells.com | 01579 345543

Land Off Yorke Road

Dartmouth | Guide Price £195,000



Approximately 12.26 acres in two separate field parcels both down to permanent grassland, previously grazed with livestock.

Exeter Farms & Land Department
exeter@kivells.com | 01392 252262

Land at Polskeys Farm

Roche, St. Austell | Guide Price £495,000



Approximately 59.18 acres of pasture and conservation land accessible off a quiet parish road with mains water connected, a useful livestock building and yard.

Liskeard Farms & Land Department
mark.bunt@kivells.com | 01579 345543

Land at Four Beeches Farm

Sourton, Okehampton | Guide Price £224,000



Approximately 26.25 acres of productive pasture land with easy access to the A386. Suitable for amenity, equestrian and traditional farming.

Exeter Farms & Land Department
exeter@kivells.com | 01392 252262

Land at Higher Reedy Mill

Trewidland, Liskeard | Guide Price £50,000



Approximately 4.39 acres of pasture land, accessible off a quiet parish road close to the village of Trewidland in a quiet rural location with far reaching views.

Liskeard Farms & Land Department
mark.bunt@kivells.com | 01579 345543

Land & Buildings at Horwood

Horwood, Bideford



A fantastic block of just over 166 ½ acres of productive arable land and a useful range of modern agricultural buildings. **Available in two lots.**

- **LOT 1:** Just over 132 acres of arable land with a range of modern and adaptable farm buildings.
Guide Price: £1,600,000
- **LOT 2:** Circa 34 ½ acres of arable land in a single level field.
Guide Price: £400,000

Holsworthy Farms & Land Agency
farms@kivells.com | 01409 259547

Land located at Wrigwell

Bickington, Newton Abbot



A fantastic block of productive arable land, well located and with excellent road access. Located just 2 miles east of the A38 Devon Expressway and bordered by the river Lemon, the land is suited for farming, conservation or amenity uses. **Available as a whole or in three lots.**

- **LOT 1:** Approximately 28.59 acres forming a single large field parcel with direct access to the public highway from the north. **Guide Price: £315,000**
- **LOT 2:** Approximately 9.19 acres forming a single gently sloping parcel. Access to the field is available from the south or north directly off the public highway. **Guide Price: £100,000**
- **LOT 3:** Approximately 7.19 acres and comprises of a level field parcel with the River Lemon forming the parcels northern edge. Access is available to the west directly off the public highway. **Guide Price: £85,000**
- **As a whole:** Approximately 44.97 acres of productive arable land. **Guide Price: £500,000**

Exeter Farms & Land Agency
exeter@kivells.com | 01392 252262

Land & Buildings For Rent

GENERAL PURPOSE BUILDING TO LET
Stourscombe, Launceston | £595 pcm



A new 45' x 30' shed at Stourscombe near Launceston, with great access to A30/A388. Ideal for storage.

Thomas Rattray
thomas.rattray@kivells.com | 07813 016804

Land for Auction

Wednesday 27th May, 7.00pm

Venue: Lifton Strawberry Fields, Lifton, Devon PL16 0DE

KIVELLS

www.kivells.com

Penloe Field

Woolley, Bude | Auction Guide Price £65,000 - £75,000
For sale by public auction - Wednesday 27th May



Approximately 5.59 acres in a quiet rural setting with lovely views and a useful open sided storage building - 27' x 15' (8.23m x 4.57m) with a rain water harvest tank to one side.

Holsworthy Farms & Land Agency
Farms@kivells.com | 01409 259547

Land at Ugworthy

Chilsworthy, Holsworthy | Auction Guide Price £45,000 - £50,000
For sale by public auction - Wednesday 27th May



Extending to some 5.67 acres, the Land at Ugworthy comprises a mainly level pasture field with natural hedge bank boundaries and a small corrugated sheet clad shed (in poor repair) and an ancient burial ground.

Holsworthy Farms & Land Agency
Farms@kivells.com | 01409 259547

Land at Milton Damarel

Holsworthy | Auction Guide Price £20,000
For sale by public auction - Wednesday 27th May



This pretty 2.42 acre field comprises a mainly level paddock which benefits from excellent access from the adjoining main road on its northern boundary. The land would be suitable for amenity purposes, keeping livestock or ponies.

Holsworthy Farms & Land Agency
Farms@kivells.com | 01409 259547

Land at Broad Parkham

Parkham, Bidford I | Auction Guide Price £75,000 - £85,000
For sale by public auction - Wednesday 27th May



Some 8.50 acres benefiting from road frontage and excellent access. The land comprises a very gently sloping pasture field which is enclosed within natural hedge banks.

Holsworthy Farms & Land Agency
Farms@kivells.com | 01409 259547

Land West of Wainhouse Corner

St. Gennys, Bude | Auction Guide Price £140,000 - £150,000
For sale by public auction - Wednesday 27th May



A useful block of just over 15.5 acres of pasture land, with excellent access from the adjoining main road. The land is very gently sloping and extremely well fenced.

Holsworthy Farms & Land Agency
Farms@kivells.com | 01409 259547

Land at Furzedon Field

Trewidland, Liskeard | Auction Guide Price £110,000 - £115,000
For sale by public auction - Wednesday 27th May



Approximately 13.80 acres of pasture land in a ring fence block with a woodland stream boundary and fringe and mains water connected to three troughs.

Liskeard Farms & Land Agency
mark.bunt@kivells.com | 01579 345543

Land for Auction

Wednesday 27th May, 7.00pm

Venue: Lifton Strawberry Fields, Lifton, Devon PL16 0DE

KIVELLS

www.kivells.com

Land at St Keyne

Liskeard | Auction Guide Price £5,000 - £10,000
For sale by public auction - Wednesday 27th May



Approximately 0.40 acres of woodland and amenity land accessible off a quiet parish road, in a picturesque valley location with a woodland stream running through.

Liskeard Farms & Land Agency
mark.bunt@kivells.com | 01579 345543

Land at Kelynack

St. Just, Penzance | Auction Guide Price £130,000
For sale by public auction - Wednesday 27th May



An excellent opportunity to purchase a 13.54 acre block of predominantly level agricultural land in a superb position, just inland from the West Cornish coastline.

Holsworthy Farms & Land Agency
Farms@kivells.com | 01409 259547

2026 Auction Dates

Wednesday 27th May
Wednesday 24th June
Wednesday 29th July
Wednesday 2nd September
Wednesday 7th October
Wednesday 11th November

Thinking of selling by auction? Contact our experienced team today for a **FREE** no obligation auction appraisal.

www.kivells.com

Previous Auction Results

Wednesday 22nd April, 7.00pm

KIVELLS

www.kivells.com

Trefuge Bungalow Coads Green, Launceston, Cornwall

- For sale by Public Auction on Wednesday 22nd April, 7.00pm at Lifton Strawberry Fields, Lifton, Devon PL16 0DH
- Three bedroom bungalow of non traditional construction and in need of updating
- Set in just over 5 acres of gently sloping pasture
- Useful Nissen hut storage shed
- Lovely quiet rural setting with superb moorland views
- EPC = E (46)

Auction Guide Price: £250,000
SOLD: £358,000

Holsworthy Farms & Land Department
farms@kivells.com | 01409 259547



Previous Auction Results

Wednesday 22nd April, 7.00pm

KIVELLS

www.kivells.com

Land & Yard known as Tall Trees

Kit Hill, Callington | Auction Guide Price £25,000

SOLD: £56,000



A great opportunity to acquire a yard, building and 1¼ acres in need of upgrading. Road frontage and good access.

[Holsworthy Farms & Land Agency](mailto:Farms@kivells.com)
Farms@kivells.com | 01409 259547

Land at Sladelands Farm

Botus Fleming, | Auction Guide Price £130,000 - £140,000

SOLD: £140,000



Approximately 9.95 acres of pasture, amenity and woodland and a range of buildings currently providing a stable yard. The land is accessible off a quiet parish road and has mains electricity and mains water available.

[Liskeard Farms & Land Agency](mailto:mark.bunt@kivells.com)
mark.bunt@kivells.com | 01579 345543

Land lying north of The Pastures

Bratton Clovelly | Auction Guide Price £50,000 - £75,000

SOLD: £68,000



2.11 acres of pasture land, great for livestock grazing or as a pony paddock. Some long term potential, subject to gaining the necessary planning consents.

[Holsworthy Farms & Land Agency](mailto:Farms@kivells.com)
Farms@kivells.com | 01409 259547

Land & Buildings at Klymiarven

Tintage | Auction Guide Price £175,000 - £195,000

SOLD: £275,000



Approximately 13.25 acres of level pasture land with a small range of buildings and yard. The land is situated in a great location in the village, not far from the North Cornish coast.

[Holsworthy Farms & Land Agency](mailto:Farms@kivells.com)
Farms@kivells.com | 01409 259547

Land at Yonder Park

Ebberley, Torrington | Auction Guide Price £295,000 - £315,000

SOLD: £315,000



A fantastic block of approximately 31.42 acres of arable land, divided in to four good sized fields and benefiting from good access from the adjoining parish road and far reaching countryside views.

[Holsworthy Farms & Land Agency](mailto:Farms@kivells.com)
Farms@kivells.com | 01409 259547

Land at Lower Wringworthy

Morval, Looe | Auction Guide Price £90,000 - £95,000

SOLD: £95,000



Approximately 10.09 acres comprising two very gently sloping enclosures of permanent pasture accessible off a quiet parish road. The land has previously been used for livestock grazing and forage conservation purposes.

[Liskeard Farms & Land Agency](mailto:mark.bunt@kivells.com)
mark.bunt@kivells.com | 01579 345543

Farms Sale Agreed

KIVELLS

www.kivells.com

Keymelford Farm Buildings & Land Keymelford, Colebrook, Crediton, Devon



Lot 1 - Agricultural buildings and yard area with land surrounding extending to 0.41 acres.
Guide Price: £150,000

Lot 2 - Agricultural building with concrete pad and land surrounding extending to 0.41 acres.
Guide Price: £135,000

Lot 3 - A small grassland area extending to approximately 0.14 acres. **Guide Price: £25,000**

Exeter Farms & Land Agency
exeter@kivells.com | 01392 252262

Tor Court Farm Torbryan, Newton Abbot



- Four bedroom, Grade II Listed farmhouse
- Stone barns and a modern agricultural building with potential for alternative uses (stp)
- A truly hidden gem located in a peaceful yet accessible location
- Stunning, well-maintained pasture, orchards and woodland
- In all approximately 67.43 acres (27.28 hectares)

Guide Price: £1,210,000

Exeter Farms & Land Department
ian.caunter@kivells.com | 01392 252262

Farms Sale Agreed

KIVELLS

www.kivells.com

Sandenbury
Tregadillett, Launceston



- Smallholding in a lovely rural, yet accessible location
- Three bedroom bungalow (AOC) in need of modernising
- Range of pole barns
- Just over 40 acres of pasture land including some woodland
- A fantastic blank canvas
- EPC: D

Guide Price: £650,000

Holworthy Farms & Land Department
farms@kivells.com | 01409 259547

Sensham Farm
Marhamchurch, Bude



- Substantial modern farmhouse and separate first floor flat, both in need of modernisation
- Range of adaptable farm buildings with stabling
- Set in some 57 acres
- Not far from the North Cornish coast
- EPCs: D and F

Guide Price: £1,600,000

Holworthy Farms & Land Department
farms@kivells.com | 01409 259547

Farms Sale Agreed

KIVELLS

www.kivells.com

East Coombe Farm
St. Pinnock, Liskeard



- Three bedroom, two bathroom, three reception room character detached house
- Splendid private location, with far reaching rural views
- Outbuildings with significant potential for alternative uses
- Located in rural East Cornwall between the wide expanses of Bodmin Moor and the South Cornish coastline
- In all 45.50 acres of land and woodland
- EPC: E & D

Guide Price: £900,000

Liskeard Farms & Land Department
liskeard@kivells.com | 01579 345543

Land Sale Agreed

KIVELLS

www.kivells.com

Land off Blackacre Lane St Columb | Guide Price £150,000 - £155,000



Approx 12.87 acres comprising a single enclosure of gently sloping land currently in a temporary ley. In recent years has been used for arable and vegetable growing purposes.
Liskeard Farms & Land Agency
mark.bunt@kivells.com | 01579 345543

Land at Viverdon Down St. Mellion, Saltash | Guide Price £465,000



Just under 45 acres of productive pasture land in a very accessible location with lovely far reaching views.
Holsworthy Farms & Land Agency
farms@kivells.com | 01409 259547

Land forming Part Oldsbrim Lot 1 Poundsgate, Newton Abbot | Guide Price £150,000



Approximately 26.19 acres incorporating a block of permanent grassland together with areas of rough grazing.
Exeter Farms & Land Department
ian.caunter@kivells.com | 01392 252262

Land forming Part Oldsbrim Lot 2 Poundsgate, Newton Abbot | Guide Price £75,000



Approximately 12.62 acres incorporating three immaculate field parcels down to permanent pasture.
Exeter Farms & Land Department
ian.caunter@kivells.com | 01392 252262

Land at Upton Farm Lot 1 Delabole | Guide Price £500,000



Approx. 39.59 acres comprising a ring fence block of level or very gently sloping land currently in arable and temporary pastures contained in large, easy working, enclosures.
Liskeard Farms & Land Department
mark.bunt@kivells.com | 01579 345543

Land at Upton Farm Lot 2 Delabole | Guide Price £1,050,000



Approx. 88.25 acres comprising a block of level or very gently sloping land currently in arable and temporary pastures.
Liskeard Farms & Land Department
mark.bunt@kivells.com | 01579 345543

Land Sale Agreed

KIVELLS

www.kivells.com

Land at Chudleighs Barn Holding Liskeard | Guide Price £100,000 - £125,000



Approximately 20.19 acres of pasture and amenity land with pretty stream frontage and some woodland included.
Liskeard Farms & Land Department
mark.bunt@kivells.com | 01579 345543

Land at Huxhill Weare Giffard, Bideford | Guide Price £550,000



A productive run of good quality arable and pasture land in a favoured location extending to approximately 49.38 acres.
Exeter Farms & Land Department
ben.hancock@kivells.com | 07760 887581

Tregovenek Bungalow, Attwood Lane, Pensilva, Liskeard, Cornwall PL14 5QU

Kivells have been instructed to market Tregovenek, a detached three/four bedroom bungalow in a quiet rural location, close to the village of Bolventor, with good size outside space. The bungalow is subject to an Agricultural Occupancy Condition.

Enquiries to W M Bunt BSc MRICS FAAV, Kivells, 7-8 Bay Tree Hill, Liskeard, Cornwall PL14 4BE

Tel: 01579 345543 or 07879 640970. Email: mark.bunt@kivells.com.