

HALLWORTHY MARKET REPORT



THURSDAY 25th JUNE 2026

EVERY THURSDAY

Gates Open 6.30am

SALE TIMES

- | | |
|-----------------|---|
| 09:45 am | Draft Ewes followed by Prime, Store Hogs & Breeding Sheep |
| 10:45am | Tested & Untested Prime & OTM Cattle |
| 11:00 am | Store Cattle followed by Stirks and Weaned Calves |

Hallworthy Stockyard, Hallworthy, Camelford, Cornwall, PL32 9SH

Tel: 01840 261261 Fax: 01840 261684

Website: www.kivells.com

Email: hallworthy@kivells.com

SHEEP

AUCTIONEER – STEVE PROUSE 07767 895366

FIELDSMAN – RYAN WALTER 07854 718886

116 DRAFT EWES

Again the hot weather kept the numbers tight and a flying trade was met by all breeds and sizes top being £219 for Polled Dorsets from WD Hutchings & Sons of Restmorel Farm who also realised £212 for Suffolk x and Mules to £175 from Swaddledown Farms, Bratton Clovelly. Swaledales to £145 from J & D Goodenough of Tremail, Davidstow. Blue Face Leicester's to £180 again from J & D Goodenough.

More Ewes wanted next week please


108 PRIME LAMBS

A smaller entry due to the hot weather and a very strong trade was met, overall average of 411.8p with the fleshed Lambs selling to a top of 430p for two pens of 44kgs, £189 from Messrs WF & RH

Pethick of Trevalga, Boscastle, followed

by 422p for four pens of 45kgs, £190 from J Littlejohns & Son of Shears, Woodford.

Weight	Top		Average	
	Per Head	Per KG	Per Head	Per KG
32.1-39	150	385	150	385
39.1-45.5	190	430	183	413
45.6-52	191	415	181	381.6
Overall	191	430	180.6	411.8



Penbode
Farm Vets

Competitively priced farm medicines
Dairy and beef fertility clubs
24/7/365 veterinary cover

Livestock fertility testing and advice
VetTech services
In house labs and lambing bays

www.penbodevets.co.uk
Holsworthy | Bradworthy | Stratton | Launceston | Camelford

STORE CATTLE
AUCTIONEER – RICHARD DENNIS
FIELDSMAN – STUART CORNELIUS 07879 415136

Hay harvesting weather didn't deter the Cattle nor the buyers, with a pleasing entry and another decent trade.

Older Stores - Top of the Store section was £2100 (22m)(pictured) given for a giant Friesian Steer sold by Simon Martin up from Liskeard. Best Angus saw strong demand with a group at £1970, others at £1940, £1710 and £1700 (only 16-17 months old) all sold by Simon Martin again. Herefords from the same farm away to £1830 (15m).

Younger Stores – Continue to sell at pace reaching £1520 and £1500 for 14 month old Beef Shorthorn Steers in from Richard Nankivell of Bodmin. Charolais Steers of a similar age to £1500 for Andrew Halls of Altarnun. Younger Heifers made £1380 for Charolais in from Andy Halls, Limousins to £1360 for Richard Nankivell and Angus to £910 (8m) for HFA Forbes of Twobridges.



KIVELLS
www.kivells.com

Rural Professional Matters - Toby Theobald
At Hallworthy Market every Thursday

All Rural Professional work able to be supported with, including:

Valuations | Environmental Stewardship | Licences and Tenancies
Compensation Claims | Land Registry Compliant Mapping



Toby Theobald
01409 253275 | toby.theobald@kivells.com



2026 FORTHCOMING SPECIAL BREEDING EWE SALES AT HOLSWORTHY AND HALLWORTHY

10:30am - Holsworthy Market - Wednesdays:

8th July	St Peters fair, special sale of Store Lambs & Breeding Ewes
29th July	1 st Breeding Ewe Sale
12th August	2 nd Breeding Ewe Sale
26th August	3 rd Breeding Ewe & Ewe Lamb Sale and Special Sale of Rams
9th September	4 th Breeding Ewe & Ewe Lamb Sale and Special Sale of Rams
23rd September	5 th Breeding Ewe & Ewe Lamb Sale and Special Sale of Rams
7th October	6 th Breeding Ewe & Ewe Lamb Sale and Special Sale of Rams
21st October	7 th Breeding Ewe & Ewe Lamb Sale and Special Sale of Rams
Saturday 22nd August	The 1 st August Fair of Breeding Ewes & Ewe Lambs
Friday 28th August – 7pm	Evening Sale of Rams plus Pedigree and Pure-Bred Breeding Ewes

10:30am - Hallworthy Stockyard – Thursdays:

6th August	1 st Breeding Ewe Sale
20th August	2 nd Breeding Ewe Sale
3rd September	3 rd Breeding Ewe Sale
17th September	4 th Breeding Ewe & Ewe Lamb Sale and Special Sale of Rams
1st October	5 th Breeding Ewe & Ewe Lamb Sale and Special Sale of Rams
15th October	6 th Breeding Ewe & Ewe Lamb Sale and Special Sale of Rams & 1 st Special Sale of Hill Bred Ewes & Rams
29th October	7 th Breeding Ewe & Ewe Lamb Sale and Special Sale of Rams & 2 nd Special Sale of Hill Bred Ewes & Rams
5th November	8 th Breeding Ewe & Ewe Lamb Sale and Special Sale of Rams & 3 rd Special Sale of Hill Bred Ewes & Rams
Tuesday 15th September – 7pm	Evening Sale of Rams & Pedigree and Pure-Bred Breeding Ewes
Saturday 25th July	Liskeard & District Sheep and Machinery Sale at Bolitho Farm, Liskeard Sale of Breeding Ewes, Ewe Lambs, Store Lambs and Breeding Rams

Farms For Sale

KIVELLS

www.kivells.com

Oxenpark Farm Hersham, Bude

- Wonderful setting with far reaching views over Bude Bay and the North Cornish coast.
- Three bedroom farmhouse and four further cottages
- Superb range of outbuildings suitable for a variety of uses
- In all about 16.18 acres with further land available by separate negotiation.
- Freehold
- Available as a whole or in three lots
- EPC: D, C, C, C & D

Lot 1: Three bedroom farmhouse, two holiday cottages, one further cottage and a lodge. Range of adaptable farm buildings, income generating wind turbine and just over 16 acres.
Guide Price: £1,395,000

Lot 2: A useful block of 45½ acres of pasture and arable land including 3 acres of mature woodland.
Guide Price: £515,000

Lot 3: A single gently sloping pasture field extending to 6.34 acres.
Guide Price: £85,000

Guide Price (as a whole): £1,995,000

Holsworthy Farms & Land Department
farms@kivells.com | 01409 259547



Farms For Sale

KIVELLS

www.kivells.com

Vennbrook Varley Farm, PRIXFORD, Barnstaple

- 100 acre residential and stock farm
- Attractive, well proportioned bungalow (AOC)
- Useful range of livestock and storage buildings
- Ring fenced pasture land
- Superb views
- EPC C [77]

Guide Price: £1,800,000

Holsworthy Farms & Land Department
farms@kivells.com | 01409 259547



Farms For Sale

KIVELLS

www.kivells.com

Puddaven Farm North Bovey, Newton Abbot

- Immaculate Farmhouse
- Stunning two bedroom Holiday Cottage
- Outbuildings and stabling
- Outdoor equine menage
- Well-maintained pasture land
- Versatile lifestyle property
- Far reaching views
- In all totalling approximately 32.35 acres (13.09 hectares)
- EPC: E & D

Guide Price: £1,695,000

Exeter Farms & Land Department
exeter@kivells.com | 01392 252262



Farms For Sale

KIVELLS

www.kivells.com

Landabethick Blisland, Bodmin

- Charming, 6 bedroom detached farmhouse
- Excellent range of traditional farm buildings suitable for a variety of uses
- In all about 77 acres comprising a combination of good agricultural land and woodland
- Parking, garaging and workshop space
- Unrivalled, private position at the end of a private drive
- Freehold with vacant possession available
- EPC: D

Guide Price: £1,350,000

Exeter Farms & Land Department
exeter@kivells.com | 01392 252262



Farms For Sale

KIVELLS

www.kivells.com

North Hayne Farm Shillingford, Tiverton

- Attractive and spacious five bedroom farmhouse with extensive living accommodation
- Superb range of traditional outbuildings with potential (STP)
- Productive pastureland, woodland and river access
- In all about 37.36 acres
- Freehold with vacant possession available
- EPC: F

Guide Price: £1,075,000

Exeter Farms & Land Department
exeter@kivells.com | 01392 252262



Farms For Sale

KIVELLS

www.kivells.com

Trehere Farm Trewidland, Liskeard

- Substantial four bedroom (all en-suite) modern house enjoying extensive country views
- Range of buildings currently comprising a livery yard with potential for alternative uses
- Approximately 36.51 acres of pasture, amenity woodland and a sand school
- Wonderful rural location yet conveniently situated close to several villages and the town of Liskeard
- EPC: D

Guide Price: £995,000

Liskeard Farms & Land Department
mark.bunt@kivells.com | 01579 345543



Rolstone Bungalow Morchard Bishop, Crediton

- A wonderfully presented and immaculate four bedroom Bungalow, subject to an Agricultural Occupancy Condition (AOC)
- Adjacent Workshop and Office Unit
- A useful Agricultural Building
- Well maintained productive Pasture Land
- In all totalling approximately 10.74 acres (4.34 hectares)
- EPC: C

Guide Price: £925,000

Exeter Farms & Land Department
exeter@kivells.com | 01392 252262



Farms For Sale

KIVELLS

www.kivells.com

View Farm

Bratton Flemming, Barnstaple

- Compact ring fenced farm with 34 acres
- Private setting
- Five bedroom dormer bungalow (AOC)
- Range of versatile outbuildings
- Superb views
- EPC: C

Guide Price: £875,000

Holsworthy Farms & Land Department
farms@kivells.com | 01409 259547



Farms For Sale

KIVELLS

www.kivells.com

Southmoor Farm Winnards Perch, St Columb

- A superbly presented residential farm in a sought-after North Cornish location
- Well presented, five bedroom detached property in fantastic condition
- Versatile outbuildings
- Productive pasture and woodland
- Sought after location with easy access to the North Cornish coastline
- In all about 33.54 acres
- EPC E [50]

Guide Price: £825,000

Holsworthy Farms & Land Department
farms@kivells.com | 01409 259547



Farms For Sale

KIVELLS

www.kivells.com

West Burrow Farm Bratton Clovelly, Okehampton

A quietly set rural small holding offering huge potential.

- Grade II* Listed thatched farmhouse in need of modernisation.
- 3 beds, 2 receptions.
- Two adjoining traditional barns.
- Land and woodland
- EPC: Exempt as a listed property

Guide Price: £645,000

Holsworthy Farms & Land Department
farms@kivells.com | 01409 259547



Development Site For Sale

KIVELLS

www.kivells.com

Development Site at Lower Newton Farm Zeal Monachorum, Crediton, Devon

- Valuable residential development opportunity
- Range of agricultural buildings with planning permission for demolition and creation of three new build, detached four and three bedroom dwellings
- Potential under extension of Permitted Development Rights for retention and conversion of the existing buildings (Clarkson's Law - Maximum 10 dwellings), subject to planning
- Additional land available

Guide Price: £450,000

Exeter Farms & Land Department
simon.alford@kivells.com | 01392 252262



Aerial view looking north west

Farms For Auction

KIVELLS

www.kivells.com

Little Silworthy Farm Bradworthy

For Sale by Public Auction on Wednesday 2nd September, 7.00pm at Lifton Strawberry Fields, Lifton, Devon, PL16 0DH.

A rare opportunity to reimagine a historic Devon farmstead set within 44 acres of unspoiled countryside with further land available.

Lot 1 ~ Little Silworthy Farm, agricultural buildings and land, in all about 44.84 acres

Auction Guide: £750,000

Lot 2 ~ Land at Little Silworthy, in all about 36.06 acres

Auction Guide: £275,000

Lot 3 ~ Land at Little Silworthy, in all about 0.50 acres

Auction Guide: £10,000

Holsworthy Farms & Land Department
farms@kivells.com | 01409 259547



Land For Sale

KIVELLS

www.kivells.com

Land forming part Home Park Ipplepen, Newton Abbot | Guide Price £250,000



Approximately 17.57 acres providing an area of secluded pastureland and woodland. The land is well suited for conservation or amenity use.

Exeter Farms & Land Department
exeter@kivells.com | 01392 252262

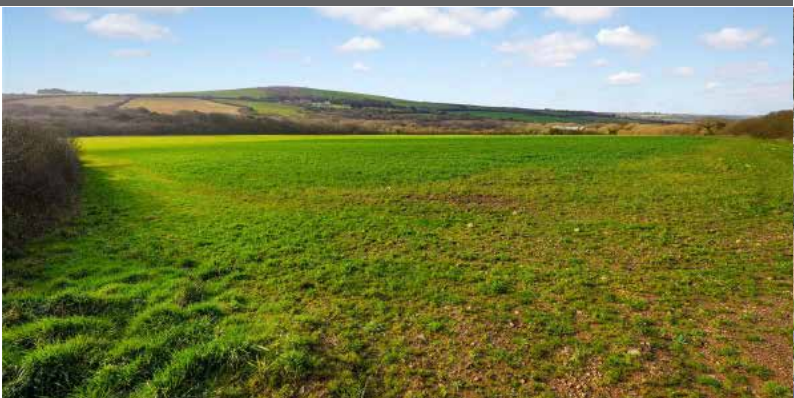
Land at Stoke Canon Exeter, Devon | Offers in Excess of £375,000



A highly productive run of level arable and pastureland with livestock handling pens extending to just under 46 acres.

Exeter Farms & Land Department
simon.alford@kivells.com | 01392 252262

Land at Criftoe Farm Tregonetha | Guide Price £675,000 - £700,000



Approximately 64.98 acres of quality cropping land and amenity woodland and a useful modern farm building (with potential for alternative uses, subject to planning).

Liskeard Farms & Land Department
mark.bunt@kivells.com | 01579 345543

Land Off Yorke Road Dartmouth | Guide Price £195,000



Approximately 12.26 acres in two separate field parcels both down to permanent grassland, previously grazed with livestock.

Exeter Farms & Land Department
exeter@kivells.com | 01392 252262

Land at Polskeys Farm Roche, St. Austell | Guide Price £495,000



Approximately 59.18 acres of pasture and conservation land accessible off a quiet parish road with mains water connected, a useful livestock building and yard.

Liskeard Farms & Land Department
mark.bunt@kivells.com | 01579 345543

Land at Four Beeches Farm Sourton, Okehampton | Guide Price £224,000



Approximately 26.25 acres of productive pasture land with easy access to the A386. Suitable for amenity, equestrian and traditional farming.

Exeter Farms & Land Department
exeter@kivells.com | 01392 252262

Land at Higher Reedy Mill

Trewidland, Liskeard | Guide Price £50,000



Approximately 4.39 acres of pasture land, accessible off a quiet parish road close to the village of Trewidland in a quiet rural location with far reaching views.

Liskeard Farms & Land Department
mark.bunt@kivells.com | 01579 345543

Land at Viverdon Down

St. Mellion, Saltash | Guide Price £465,000



Just under 45 acres of productive pasture land in a very accessible location with lovely far reaching views.

Holworthy Farms & Land Agency
farms@kivells.com | 01409 259547

Land & Buildings at Horwood

Horwood, Bideford



Just over 166 ½ acres of productive arable land and a useful range of modern agricultural buildings.

- **LOT 1:** Just over 132 acres of arable land with a range of modern farm buildings. **Guide Price: £1,600,000**
- **LOT 2:** Circa 34 ½ acres of arable land in a single level field. **Guide Price: £400,000**

Holworthy Farms & Land Agency
farms@kivells.com | 01409 259547

Land at Crylla

Minions, Liskeard



Extending to approximately 141.40 acres in all, the land at Crylla comprises a completely ring-fenced block of predominantly level agricultural land, divided into a number of useful-sized enclosures and enclosed by traditional stone walls. The land is currently utilised for the grazing of livestock and offers an excellent opportunity for continued agricultural use, with practical sized parcels well suited to grazing and general stock management.

Guide Price: £1,400,000

Holsworthy Farms & Land Agency
farms@kivells.com | 01409 259547

Land and buildings Mucksey Lane

Exbourne, Okehampton



A unique development opportunity sat within 27.85 acres of Grade 2 arable land with river frontage. Full planning permission has been granted for the demolition of the existing building and the construction of a substantial four-bedroom dwelling. Further details can be found on the West Devon Borough Council planning portal under reference 3424/25/FUL.

Guide Price: £475,000

Exeter Farms & Land Agency
ben.hancock@kivells.com | 07760 887581

GENERAL PURPOSE BUILDING TO LET
Stourscombe, Launceston | £595 pcm



A new 45' x 30' shed at Stourscombe near Launceston, with great access to A30/A388. Ideal for storage.

Thomas Rattray
thomas.rattray@kivells.com | 07813 016804

2026 Auction Dates

Wednesday 2nd September
Wednesday 7th October
Wednesday 11th November
Wednesday 9th December

Kivells excellence since



Land for Auction

Wednesday 24th June, 7.00pm

Venue: Lifton Strawberry Fields, Lifton, Devon PL16 0DE

KIVELLS

www.kivells.com

Land at Dunns Farm

Boyton, Launceston | Auction Guide Price £200,000
For sale by public auction - Wednesday 2nd September



Just over 26 acres of gently sloping pasture land with good access, situated in a rural yet accessible location.

Holworthy Farms & Land Agency
Farms@kivells.com | 01409 259547

Land at Lake

Bradworthy, Holsworthy | Auction Guide Price £225,000
For sale by public auction - Wednesday 2nd September



A highly accessible and productive run of approx. 22½ acres of pasture land, mainly level/gently sloping, and situated in a sought after farming area, close to the village.

Holworthy Farms & Land Agency
Farms@kivells.com | 01409 259547

Land at Underlane

Trebursye, Launceston | Auction Guide Price £15,000
For sale by public auction - Wednesday 2nd September



Extending to some 3.09 acres in all, the Land at Underlane comprises a pretty three corner field, which is sloping in nature and all down to pasture.

Holworthy Farms & Land Agency
Farms@kivells.com | 01409 259547

Land at Compton

Marldon, Paignton | Auction Guide Price £650,000
For sale by public auction - Wednesday 2nd September



A productive run of Grade 2 arable land and Grade 3 pasture land, in all about 70.03 acres. well located with excellent road access.

Exeter Farms and Land
Exeter@kivells.com | 01392 252262

Previous Auction Results

Wednesday 24th June, 7.00pm

KIVELLS

www.kivells.com

Land at Liftdown

Liftdown, Lifton | Auction Guide Price £75,000

SOLD: £145,000



Extending to some 7.87 acres the land at Liftdown is contained within a gently sloping single enclosure which is all down to permanent pasture.

Holsworthy Farms & Land Agency
Farms@kivells.com | 01409 259547

Land at St Keyne

Liskeard | Auction Guide Price £5,000 - £10,000

SOLD: £22,000



Approximately 0.40 acres of woodland and amenity land accessible off a quiet parish road, in a picturesque valley location with a woodland stream running through.

Liskeard Farms & Land Agency
mark.bunt@kivells.com | 01579 345543

Land at Woolladon

Meeth, Okehampton | Auction Guide Price £130,000

SOLD: £180,000



Approximately 17.90 acres of pasture land together with a wooded copse area, arranged in two useful enclosures and well suited to a range of uses.

Exeter Farms & Land Agency
Exeter@kivells.com | 01392 252262

Farms Sale Agreed

KIVELLS

www.kivells.com

Keymelford Farm Buildings & Land Keymelford, Colebrook, Crediton, Devon



Lot 1 - Agricultural buildings and yard area with land surrounding extending to 0.41 acres.
Guide Price: £150,000

Lot 2 - Agricultural building with concrete pad and land surrounding extending to 0.41 acres.
Guide Price: £135,000

Lot 3 - A small grassland area extending to approximately 0.14 acres. **Guide Price: £25,000**

Exeter Farms & Land Agency
exeter@kivells.com | 01392 252262

Tor Court Farm Torbryan, Newton Abbot



- Four bedroom, Grade II Listed farmhouse
- Stone barns and a modern agricultural building with potential for alternative uses (stp)
- A truly hidden gem located in a peaceful yet accessible location
- Stunning, well-maintained pasture, orchards and woodland
- In all approximately 67.43 acres (27.28 hectares)

Guide Price: £1,210,000

Exeter Farms & Land Department
ian.caunter@kivells.com | 01392 252262

Farms Sale Agreed

KIVELLS

www.kivells.com

Sandenbury
Tregadillett, Launceston



- Smallholding in a lovely rural, yet accessible location
- Three bedroom bungalow (AOC) in need of modernising
- Range of pole barns
- Just over 40 acres of pasture land including some woodland
- A fantastic blank canvas
- EPC: D

Guide Price: £650,000

Holworthy Farms & Land Department
farms@kivells.com | 01409 259547

Sensham Farm
Marhamchurch, Bude



- Substantial modern farmhouse and separate first floor flat, both in need of modernisation
- Range of adaptable farm buildings with stabling
- Set in some 57 acres
- Not far from the North Cornish coast
- EPCs: D and F

Guide Price: £1,600,000

Holworthy Farms & Land Department
farms@kivells.com | 01409 259547

Farms Sale Agreed

KIVELLS

www.kivells.com

East Coombe Farm St. Pinnock, Liskeard



- Three bedroom, two bathroom, three reception room character detached house
- Splendid private location, with far reaching rural views
- Outbuildings with significant potential for alternative uses
- Located in rural East Cornwall between the wide expanses of Bodmin Moor and the South Cornish coastline
- In all 45.50 acres of land and woodland
- EPC: E & D

Guide Price: £900,000

Liskeard Farms & Land Department
liskeard@kivells.com | 01579 345543

Little Clamoak Farm Bere Ferrers, Yelverton

- Four bedroom bungalow (AOC)
- Adaptable range of farm buildings
- Sought after location
- In all approximately 26 acres
- Freehold with vacant possession available
- EPC F

Guide Price: £725,000

Exeter Farms & Land Department
exeter@kivells.com | 01392 252 262



Farms Sale Agreed

KIVELLS

www.kivells.com

Barton Moor
Meshaw, South Molton, Devon



KIVELLS
www.kivells.com
Kivells. The sign that sells!
SALE AGREED

- Three bedroom detached bungalow (AOC). EPC: 23 Band F
- Range of modern farm buildings with Class Q Permission for five dwellings
- Desirable and accessible location
- Freehold with vacant possession available
- In all about 4.22 acres

Guide Price: £495,000

Exeter Farms & Land Department
ben.hancock@kivells.com | 01392 252262

Land located at Wrigwell
Bickington, Newton Abbot



KIVELLS
www.kivells.com
Kivells. The sign that sells!
SALE AGREED

A fantastic block of productive arable land, well located and with excellent road access and suited for farming, conservation or amenity uses. **Available as a whole or in three lots.**

- **LOT 1:** Approximately 28.59 acres forming a single large field parcel with direct access to the public highway from the north. **Guide Price: £315,000**
- **LOT 2:** Approximately 9.19 acres forming a single gently sloping parcel. Access to the field is available from the south or north directly off the public highway. **Guide Price: £100,000**
- **LOT 3:** Approximately 7.19 acres and comprises of a level field parcel with the River Lemon forming the parcels northern edge. Access is available to the west directly off the public highway. **Guide Price: £85,000**
- **As a whole:** Approximately 44.97 acres of productive arable land. **Guide Price: £500,000**

Exeter Farms & Land Agency
exeter@kivells.com | 01392 252262

Farms Sale Agreed

KIVELLS

www.kivells.com

Holdstrong Farmhouse
Coryton, Okehampton



- A delightful 5 bedroom 17th Century Devon Longhouse
- Situated in a beautiful rural setting on the edge of the Dartmoor National Park
- Superb views
- Stabling and further outbuildings
- Pond
- Coppice
- In all about 15.87 acres
- Freehold with vacant possession available
- EPC: E

Guide Price: £850,000

Exeter Farms & Land Department
exeter@kivells.com | 01392 252262

Land Sale Agreed

KIVELLS

www.kivells.com

Land off Blackacre Lane St Columb | Guide Price £150,000 - £155,000



Approx 12.87 acres comprising a single enclosure of gently sloping land currently in a temporary ley. In recent years has been used for arable and vegetable growing purposes.
Liskeard Farms & Land Agency
mark.bunt@kivells.com | 01579 345543

Land at Lidburn Hill Tedburn St Mary, Exeter | Guide Price £100,000



An attractive south facing arable field extending to approximately 8.95 acres suited for farming, conservation or amenity uses. For sale as a whole.
Exeter Farms & Land Department
exeter@kivells.com | 01392 252262

Land forming Part Oldsbrim Lot 1 Poundsgate, Newton Abbot | Guide Price £150,000



Approximately 26.19 acres incorporating a block of permanent grassland together with areas of rough grazing.
Exeter Farms & Land Department
ian.caunter@kivells.com | 01392 252262

Land forming Part Oldsbrim Lot 2 Poundsgate, Newton Abbot | Guide Price £75,000



Approximately 12.62 acres incorporating three immaculate field parcels down to permanent pasture.
Exeter Farms & Land Department
ian.caunter@kivells.com | 01392 252262

Land at Upton Farm Lot 1 Delabole | Guide Price £500,000



Approx. 39.59 acres comprising a ring fence block of level or very gently sloping land currently in arable and temporary pastures contained in large, easy working, enclosures.
Liskeard Farms & Land Department
mark.bunt@kivells.com | 01579 345543

Land at Upton Farm Lot 2 Delabole | Guide Price £1,050,000



Approx. 88.25 acres comprising a block of level or very gently sloping land currently in arable and temporary pastures.
Liskeard Farms & Land Department
mark.bunt@kivells.com | 01579 345543

Land Sale Agreed

KIVELLS

www.kivells.com

Land at Chudleighs Barn Holding
Liskeard | Guide Price £100,000 - £125,000



Approximately 20.19 acres of pasture and amenity land with pretty stream frontage and some woodland included.
Liskeard Farms & Land Department
mark.bunt@kivells.com | 01579 345543

Land at Huxhill
Weare Giffard, Bideford | Guide Price £550,000



A productive run of good quality arable and pasture land in a favoured location extending to approximately 49.38 acres.
Exeter Farms & Land Department
ben.hancock@kivells.com | 07760 887581

Tregovenek Bungalow, Attwood Lane, Pensilva, Liskeard, Cornwall PL14 5QU

Kivells have been instructed to market Tregovenek, a detached three/four bedroom bungalow in a quiet rural location, close to the village of Bolventor, with good size outside space. The bungalow is subject to an Agricultural Occupancy Condition.

Enquiries to W M Bunt BSc MRICS FAAV, Kivells, 7-8 Bay Tree Hill, Liskeard, Cornwall PL14 4BE

Tel: 01579 345543 or 07879 640970. Email: mark.bunt@kivells.com.