

HALLWORTHY MARKET REPORT



THURSDAY 7th MAY 2026

EVERY THURSDAY

Gates Open 6.30am

SALE TIMES

- | | |
|-----------------|---|
| 09:45 am | Draft Ewes followed by Prime, Store Hogs & Breeding Sheep |
| 10:45am | Tested & Untested Prime & OTM Cattle |
| 11:00 am | Store Cattle followed by Stirks and Weaned Calves |

Hallworthy Stockyard, Hallworthy, Camelford, Cornwall, PL32 9SH

Tel: 01840 261261 Fax: 01840 261684

Website: www.kivells.com

Email: hallworthy@kivells.com

SHEEP

AUCTIONEER – STEVE PROUSE 07767 895366

FIELDSMAN – RYAN WALTER 07854 718886

217 DRAFT EWES

A smaller entry and a much faster trade, with everything in the overall average of £157.85 to a top of £233 for a Texel from Westcott Farms, Brentor.

Continental x Ewes to £229 from Huggsmead LTD, TA Mill, St Clether. Suffolk x Ewes to £208 from Andy and James Melville of Trentworthy, Bradworthy with four other vendors at £200. Mules to £174 and Cheviot x Ewes to £159.

244 FAT HOGGS

A smaller entry but still a strong trade, the well fleshed Hoggs sold up to 435p for a pen of 40kgs, £174 from Nigel Vincent of Lerryn, followed by 419p for a pen of 44.6kgs, £187 from Mr J Small of Tregoose Farm, St Columb. Over 20 pens realised £190 and over to a top of £195.50 from Nigel Vincent of Lerryn, followed by Paul Webber of Ashleigh, Lifton who realised £195.

115 NEW SEASON LAMBS

A few more on offer and again a very strong trade to a top per kilo of 443p from two vendors, Barry Lyon's of Morwenstow for his 40kgs, £177 and Mark Wise of Ocean View, St Gennys for his 42kgs, £186. Several pens well over £190 to a top of £197 for 46.4kgs from WF & RH Pethick of Trevalga, Boscastle.

Weight	Top		Average	
	Per Head	Per KG	Per Head	Per KG
32.1-39	163	429	163	429
39.1-45.5	193	443	187.8	431.4
45.6-52	197	425	195.5	413
52+				
Overall	197	443	192.1	431.3

COUPLES 173 EWES & 261 LAMBS

Another good entry and a very fast trade with several perspective buyers in attendance, numerous pens of doubles £400 and over to a top of £445 for Texel x doubles from Mr K & J Daniel of Trebursye, who also made £440 for another two pens. Mule 2T doubles to £400 from Scott Tummey of Cutcare, Merrymeet. Suffolk x doubles to £390 from Tom Hasson of Dunsmouth. Mule 2T singles to £340 again sold by Scott Tummey, Texel x singles to £320 again sold by K & J Daniel of Trebursye. Cheviot singles to £292 from W & R Pethick of Trevalga, Boscastle.



Penbode
Farm Vets

Competitively priced farm medicines Livestock fertility testing and advice
Dairy and beef fertility clubs VetTech services
24/7/365 veterinary cover In house labs and lambing bays

www.penbodevets.co.uk
Holsworthy | Bradworthy | Stratton | Launceston | Camelford

STORE CATTLE
AUCTIONEER – RICHARD DENNIS
FIELDSMAN – STUART CORNELIUS 07879 415136

173 Stores to report on, trade for those forward fleshed types remains the same however the young and mid-range cattle took a sharp lift in trade with many 12-14 month old Stores looking very well sold between £1500-£1750, with the continuing drop in beef price not seeming to affect the trade on these younger grazing cattle. SJ Hatch of St Stephens presented a run of well fleshed Hereford Steers which rose to £2070 and £2030. The highlight of the day was a premium 13-month-old Angus Steer which parted well at £2030 sold by NJ Hoskin of Flethersbridge who sold other eye-catching Angus to £1930 at only 13 months old again, further Angus reached £1780 and £1720 (19m) for M Truscott of Bodmin. A fantastic consignment of yearling Angus sold extremely well and returned at £1540 for JM & ME Eustice of Wadebridge. Charolais Steers drew £2000 for a two-year-old Steer in from Joshua Eastley of Looe with others at a similar age at £1970 for Bucklawren Livestock of Looe, younger Charolais Steers look well sold to £1600 (13m) in from SH May of Port Gaverne. Two-year-old Blonde Steers up to £1870 for AR Martin of Latchley followed by Blues Steers at the same age at £1810 for Bucklawren Lickestock again. 14-month-old South Devon Steers achieved £1740 for T Dart of Boyton, followed by 9-month-old Limousin Steers to £1580 for JM & ME Eustice and the same aged Simmental Steers to £1500 for Messrs Shipton of Week St Mary and £1410 for JM & ME Eustice. Store Heifers topped at £1900, £1860 and £1780 again for SJ Hatch for his well fleshed Hereford Heifers, followed by Blue Heifers to £1700 for Bucklawren Livestock, who sold Charolais Heifers to £1690. Young Simmental Heifers sold to £1510 (13m) for JM & ME Eustice, who sold yearling Limousin Heifers to £1480 and Angus Heifers also to £1480 (13m) for NJ Hoskin again. Cows sold away to £1810 for a fleshed Hereford from DF & HA Blanchard, who sold a Simmental Cow to £1760 and an Angus Cow to £1790 for Bannadon Farm.

48 STIRKS

AUCTIONEER – TIM KIVELL

STIRKS

A very small show of Stirks for the first week in May, all the negative talks on beef price certainly didn't affect the Stirk trade today, with 9-month-old Blue Steers hitting £1300 for J Shipton of Week St Mary, followed by a run of 5-month-old Blue Steers selling to £980 for Allin Dairy LTD of Clawton. Herefords from the same farm at the same young age sold to a fantastic trade and drew £1000 and £960. Smart well put together organic Simmentals rose to £1100 for JGA Raymont & Son up from Padstow, followed by Angus Steers to £860 (5m) for Graham Braund of Holsworthy. Stirk Heifers reached a strong £1220 for a super pair of Simmentals (9m) from J Shipton, who sold Limousin Heifers to £1200 (11m), with further Limousin Heifers to £1000 and £960 for MJC Hambly. Hereford Heifers parted at £1060 (9m) for Chris Nicholls of Boscastle, others to £840 for MJC Hambly, with Blue Heifers realising £860 (5m) for Allin Dairy LTD.



Rural Professional Matters - Toby Theobald At Hallworthy Market every Thursday

All Rural Professional work able to be supported with, including:

Valuations | Environmental Stewardship | Licences and Tenancies
Compensation Claims | Land Registry Compliant Mapping



Toby Theobald
01409 253275 | toby.theobald@kivells.com



Farms For Sale

KIVELLS

www.kivells.com

Vennbrook Varley Farm, PRIXFORD, Barnstaple

- 100 acre residential and stock farm
- Attractive, well proportioned bungalow (AOC)
- Useful range of livestock and storage buildings
- Ring fenced pasture land
- Superb views
- EPC C [77]

Guide Price: £1,800,000

Holworthy Farms & Land Department
farms@kivells.com | 01409 259547



Rolstone Bungalow Morchard Bishop, Crediton

- A wonderfully presented and immaculate four bedroom Bungalow, subject to an Agricultural Occupancy Condition (AOC)
- Adjacent Workshop and Office Unit
- A useful Agricultural Building
- Well maintained productive Pasture Land
- In all totalling approximately 10.74 acres (4.34 hectares)
- EPC: C

Guide Price: £925,000

Exeter Farms & Land Department
exeter@kivells.com | 01392 252262



Farms For Sale

KIVELLS

www.kivells.com

Little Clamoak Farm Bere Ferrers, Yelverton

- A highly private and well located residential farm 4 bedroom dwelling, subject to AOC
- Adaptable range of farm buildings
- Productive run of land extending to just over 26 acres in all
- Sought after location on the Bere Peninsula overlooking the River Tamar
- Freehold with vacant possession available
- EPC: F

Guide Price: £725,000

Exeter Farms & Land Department
exeter@kivells.com | 01392 252262



Farms For Sale

KIVELLS

www.kivells.com

Holdstrong Farmhouse Coryton, Okehampton

- A delightful 5 bedroom 17th Century Devon Longhouse
- Situated in a beautiful rural setting on the edge of the Dartmoor National Park
- Superb views
- Stabling and further outbuildings
- Pond
- Coppice
- In all about 15.87 acres
- Freehold with vacant possession available
- EPC: E

Guide Price: £850,000

Exeter Farms & Land Department
exeter@kivells.com | 01392 252262



Farms For Sale

KIVELLS

www.kivells.com

Puddaven Farm North Bovey, Newton Abbot

- Immaculate Farmhouse
- Stunning two bedroom Holiday Cottage
- Outbuildings and stabling
- Outdoor equine menage
- Well-maintained pasture land
- Versatile lifestyle property
- Far reaching views
- In all totalling approximately 32.35 acres (13.09 hectares)
- EPC: E & D

Guide Price: £1,695,000

Exeter Farms & Land Department
exeter@kivells.com | 01392 252262



Oxenpark Farm Hersham, Bude

- Wonderful setting with far reaching views over Bude Bay and the North Cornish coast.
- Three bedroom farmhouse and four further cottages
- Superb range of outbuildings suitable for a variety of uses
- In all about 16.18 acres with further land available by separate negotiation.
- Freehold
- Available as a whole or in three lots
- EPC: D, C, C, C & D

Lot 1: Three bedroom farmhouse, two holiday cottages, one further cottage and a lodge. Range of adaptable farm buildings, income generating wind turbine and just over 16 acres.
Guide Price: £1,395,000

Lot 2: A useful block of 45½ acres of pasture and arable land including 3 acres of mature woodland.
Guide Price: £515,000

Lot 3: A single gently sloping pasture field extending to 6.34 acres.
Guide Price: £85,000

Guide Price (as a whole): £1,995,000

Holsworthy Farms & Land Department
farms@kivells.com | 01409 259547



Farms For Sale

KIVELLS

www.kivells.com

Trehere Farm Trewidland, Liskeard

- Substantial four bedroom (all en-suite) modern house enjoying extensive country views
- Range of buildings currently comprising a livery yard with potential for alternative uses
- Approximately 36.51 acres of pasture, amenity woodland and a sand school
- Wonderful rural location yet conveniently situated close to several villages and the town of Liskeard
- EPC: D

Guide Price: £995,000

Liskeard Farms & Land Department
mark.bunt@kivells.com | 01579 345543



Farms For Sale

KIVELLS

www.kivells.com

Barton Moor Meshaw, South Molton, Devon

- Three bedroom detached bungalow (AOC)
- Range of modern farm buildings with Class Q Permission for five dwellings
- Desirable and accessible location
- Freehold with vacant possession available
- In all about 4.22 acres
- EPC: 23 Band F

Guide Price: £495,000

Exeter Farms & Land Department
ben.hancock@kivells.com | 01392 252262



Farms For Sale

KIVELLS

www.kivells.com

Landabethick Blisland, Bodmin

- Charming, 6 bedroom detached farmhouse
- Excellent range of traditional farm buildings suitable for a variety of uses
- In all about 77 acres comprising a combination of good agricultural land and woodland
- Parking, garaging and workshop space
- Unrivalled, private position at the end of a private drive
- Freehold with vacant possession available
- EPC: D

Guide Price: £1,350,000

Exeter Farms & Land Department
ben.hancock@kivells.com | 01392 252262



Farms For Sale

KIVELLS

www.kivells.com

Great Huish Farm Tedburn St. Mary Exeter

- Grade II Listed detached four bedroom house with three reception rooms
- Two further cottages providing income generation or multi-generation living
- Ring Fenced Farm
- Range of modern and traditional farm buildings
- Development opportunities with some planning consent in place
- Easy access to the A30 & M5
- In all about 8.92 acres of agricultural land with further land available by separate negotiation.
- EPC: C

Guide Price: £1,395,000

Exeter Farms & Land Department
exeter@kivells.com | 01392 252262



Farms For Sale

KIVELLS

www.kivells.com

West Burrow Farm Bratton Clovelly, Okehampton

A quietly set rural small holding offering huge potential.

- Grade II* Listed thatched farmhouse in need of modernisation.
- 3 beds, 2 receptions.
- Two adjoining traditional barns.
- Land and woodland
- EPC: Exempt as a listed property

Guide Price: £645,000

Holsworthy Farms & Land Department
farms@kivells.com | 01409 259547



Farms For Sale

KIVELLS

www.kivells.com

Fern Hill Farm Mount, Bodmin

- Farm with significant development potential
- Range of agricultural and equestrian buildings
- 60.29 acres of land including productive pasture
- Two bedroom lodge
- Planning for farm dwelling and residential caravan
- Located in a super rural location with far reaching valley views
- Freehold with vacant possession upon completion

Guide Price: £1,000,000

Liskeard Farms & Land Department
mark.bunt@kivells.com | 01579 345543



Development Site For Sale

KIVELLS

www.kivells.com

Development Site at Lower Newton Farm Zeal Monachorum, Crediton, Devon

- Valuable residential development opportunity
- Range of agricultural buildings with planning permission for demolition and creation of three new build, detached four and three bedroom dwellings
- Potential under extension of Permitted Development Rights for retention and conversion of the existing buildings (Clarkson's Law - Maximum 10 dwellings), subject to planning
- Additional land available

Guide Price: £450,000

Exeter Farms & Land Department
simon.alford@kivells.com | 01392 252262



Aerial view looking north west

Land For Sale

KIVELLS

www.kivells.com

Land At Trevillies

St. Keyne, Liskeard | Guide Price £375,000 -



Approximately 45.64 acres of productive arable/pasture land and amenity woodland with mains water connected. Freehold with vacant possession upon completion.

Liskeard Farms & Land Department
mark.bunt@kivells.com | 01579 345543

Land at Stoke Canon

Exeter, Devon | Offers in Excess of £375,000

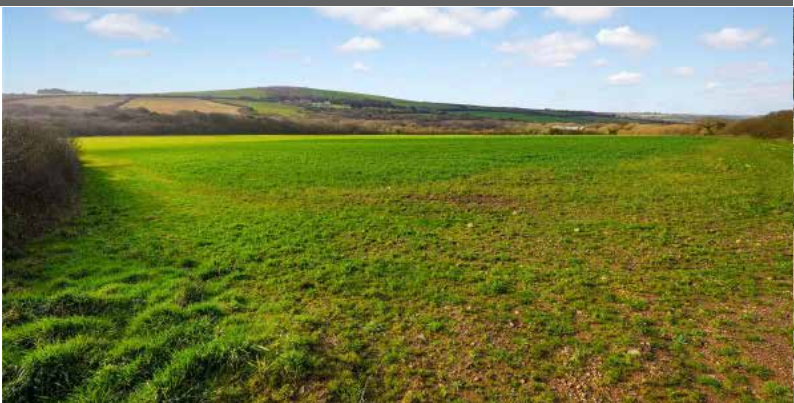


A highly productive run of level arable and pastureland with livestock handling pens extending to just under 46 acres.

Exeter Farms & Land Department
simon.alford@kivells.com | 01392 252262

Land at Criftoe Farm

Tregonetha | Guide Price £675,000 - £700,000



Approximately 64.98 acres of quality cropping land and amenity woodland and a useful modern farm building (with potential for alternative uses, subject to planning).

Liskeard Farms & Land Department
mark.bunt@kivells.com | 01579 345543

Land Off Yorke Road

Dartmouth | Guide Price £195,000



Approximately 12.26 acres in two separate field parcels both down to permanent grassland, previously grazed with livestock.

Exeter Farms & Land Department
exeter@kivells.com | 01392 252262

Land at Polskeys Farm

Roche, St. Austell | Guide Price £495,000



Approximately 59.18 acres of pasture and conservation land accessible off a quiet parish road with mains water connected, a useful livestock building and yard.

Liskeard Farms & Land Department
mark.bunt@kivells.com | 01579 345543

Land at Four Beeches Farm

Sourton, Okehampton | Guide Price £224,000



Approximately 26.25 acres of productive pasture land with easy access to the A386. Suitable for amenity, equestrian and traditional farming.

Exeter Farms & Land Department
exeter@kivells.com | 01392 252262

Land at Higher Reedy Mill

Trewidland, Liskeard | Guide Price £50,000



Approximately 4.39 acres of pasture land, accessible off a quiet parish road close to the village of Trewidland in a quiet rural location with far reaching views.

Liskeard Farms & Land Department
mark.bunt@kivells.com | 01579 345543

Land & Buildings at Horwood

Horwood, Bideford



A fantastic block of just over 166 ½ acres of productive arable land and a useful range of modern agricultural buildings. **Available in two lots.**

- **LOT 1:** Just over 132 acres of arable land with a range of modern and adaptable farm buildings.
Guide Price: £1,600,000
- **LOT 2:** Circa 34 ½ acres of arable land in a single level field.
Guide Price: £400,000

Holsworthy Farms & Land Agency
farms@kivells.com | 01409 259547

Land & Buildings For Rent

KIVELLS

www.kivells.com

GRASS KEEP FOR SALE BY INFORMAL TENDER Rosedown Farm, Hartland, Devon EX39 6AH



Approximately 78.41 acres available in one lot, to cut and/or graze with sheep. Available 1st June 2026 to 31st October 2026. Tenders to be submitted by 12 noon on Wednesday 20th May 2026.

Toby Theobald
toby.theobald@kivells.com | 01409 253275

GRASS KEEP FOR SALE BY INFORMAL TENDER Land known as the Prairie Land, North of Tor Down, Exbourne EX20 3QU



58.95 acres available in one lot for cutting and/or grazing purposes. Available from 1st June 2026 to 31st October 2026, Tenders to be submitted by 12 noon on Tuesday 19th May 2026.

Toby Theobald
toby.theobald@kivells.com | 01409 253275

GENERAL PURPOSE BUILDING TO LET Stourscombe, Launceston | £595 pcm



A new 45' x 30' shed at Stourscombe near Launceston, with great access to A30/A388. Ideal for storage.

Thomas Rattray
thomas.rattray@kivells.com | 07813 016804

Land for Auction

Wednesday 27th May, 7.00pm

Venue: Lifton Strawberry Fields, Lifton, Devon PL16 0DE

KIVELLS

www.kivells.com

Penloe Field

Woolley, Bude | Auction Guide Price £65,000 - £75,000
For sale by public auction - Wednesday 27th May



Approximately 5.59 acres in a quiet rural setting with lovely views and a useful open sided storage building - 27' x 15' (8.23m x 4.57m) with a rain water harvest tank to one side.

Holsworthy Farms & Land Agency
Farms@kivells.com | 01409 259547

Land at Ugworthy

Chilsworthy, Holsworthy | Auction Guide Price £45,000 - £50,000
For sale by public auction - Wednesday 27th May



Extending to some 5.67 acres, the Land at Ugworthy comprises a mainly level pasture field with natural hedge bank boundaries and a small corrugated sheet clad shed (in poor repair) and an ancient burial ground.

Holsworthy Farms & Land Agency
Farms@kivells.com | 01409 259547

Land at Milton Damarel

Holsworthy | Auction Guide Price £20,000
For sale by public auction - Wednesday 27th May



This pretty 2.42 acre field comprises a mainly level paddock which benefits from excellent access from the adjoining main road on its northern boundary. The land would be suitable for amenity purposes, keeping livestock or ponies.

Holsworthy Farms & Land Agency
Farms@kivells.com | 01409 259547

Land at Broad Parkham

Parkham, Bidford I | Auction Guide Price £75,000 - £85,000
For sale by public auction - Wednesday 27th May



Some 8.50 acres benefiting from road frontage and excellent access. The land comprises a very gently sloping pasture field which is enclosed within natural hedge banks.

Holsworthy Farms & Land Agency
Farms@kivells.com | 01409 259547

Land West of Wainhouse Corner

St. Gennys, Bude | Auction Guide Price £140,000 - £150,000
For sale by public auction - Wednesday 27th May



A useful block of just over 15.5 acres of pasture land, with excellent access from the adjoining main road. The land is very gently sloping and extremely well fenced.

Holsworthy Farms & Land Agency
Farms@kivells.com | 01409 259547

Land at Furzedon Field

Trewidland, Liskeard | Auction Guide Price £110,000 - £115,000
For sale by public auction - Wednesday 27th May



Approximately 13.80 acres of pasture land in a ring fence block with a woodland stream boundary and fringe and mains water connected to three troughs.

Liskeard Farms & Land Agency
mark.bunt@kivells.com | 01579 345543

Land for Auction

Wednesday 27th May, 7.00pm

Venue: Lifton Strawberry Fields, Lifton, Devon PL16 0DE

KIVELLS

www.kivells.com

Land at St Keyne

Liskeard | Auction Guide Price £5,000 - £10,000

For sale by public auction - Wednesday 27th May



Approximately 0.40 acres of woodland and amenity land accessible off a quiet parish road, in a picturesque valley location with a woodland stream running through.

Liskeard Farms & Land Agency

mark.bunt@kivells.com | 01579 345543

Land at Kelynack

St. Just, Penzance | Auction Guide Price £130,000

For sale by public auction - Wednesday 27th May



An excellent opportunity to purchase a 13.54 acre block of predominantly level agricultural land in a superb position, just inland from the West Cornish coastline.

Holsworthy Farms & Land Agency

Farms@kivells.com | 01409 259547

2026 Auction Dates

Wednesday 27th May

Wednesday 24th June

Wednesday 29th July

Wednesday 2nd September

Wednesday 7th October

Wednesday 11th November

Thinking of selling by auction? Contact our experienced team today for a **FREE** no obligation auction appraisal.

www.kivells.com

Previous Auction Results

Wednesday 22nd April, 7.00pm

KIVELLS

www.kivells.com

Trefuge Bungalow Coads Green, Launceston, Cornwall

- For sale by Public Auction on Wednesday 22nd April, 7.00pm at Lifton Strawberry Fields, Lifton, Devon PL16 0DH
- Three bedroom bungalow of non traditional construction and in need of updating
- Set in just over 5 acres of gently sloping pasture
- Useful Nissen hut storage shed
- Lovely quiet rural setting with superb moorland views
- EPC = E (46)

Auction Guide Price: £250,000
SOLD: £358,000

Holsworthy Farms & Land Department
farms@kivells.com | 01409 259547



Previous Auction Results

Wednesday 22nd April, 7.00pm

KIVELLS

www.kivells.com

Land & Yard known as Tall Trees

Kit Hill, Callington | Auction Guide Price £25,000

SOLD: £56,000



A great opportunity to acquire a yard, building and 1¼ acres in need of upgrading. Road frontage and good access.

[Holsworthy Farms & Land Agency](mailto:Farms@kivells.com)
Farms@kivells.com | 01409 259547

Land at Sladelands Farm

Botus Fleming, | Auction Guide Price £130,000 - £140,000

SOLD: £140,000



Approximately 9.95 acres of pasture, amenity and woodland and a range of buildings currently providing a stable yard. The land is accessible off a quiet parish road and has mains electricity and mains water available.

[Liskeard Farms & Land Agency](mailto:mark.bunt@kivells.com)
mark.bunt@kivells.com | 01579 345543

Land lying north of The Pastures

Bratton Clovelly | Auction Guide Price £50,000 - £75,000

SOLD: £68,000



2.11 acres of pasture land, great for livestock grazing or as a pony paddock. Some long term potential, subject to gaining the necessary planning consents.

[Holsworthy Farms & Land Agency](mailto:Farms@kivells.com)
Farms@kivells.com | 01409 259547

Land & Buildings at Klymiarven

Tintage | Auction Guide Price £175,000 - £195,000

SOLD: £275,000



Approximately 13.25 acres of level pasture land with a small range of buildings and yard. The land is situated in a great location in the village, not far from the North Cornish coast.

[Holsworthy Farms & Land Agency](mailto:Farms@kivells.com)
Farms@kivells.com | 01409 259547

Land at Yonder Park

Ebberley, Torrington | Auction Guide Price £295,000 - £315,000

SOLD: £315,000



A fantastic block of approximately 31.42 acres of arable land, divided in to four good sized fields and benefiting from good access from the adjoining parish road and far reaching countryside views.

[Holsworthy Farms & Land Agency](mailto:Farms@kivells.com)
Farms@kivells.com | 01409 259547

Land at Lower Wringworthy

Morval, Looe | Auction Guide Price £90,000 - £95,000

SOLD: £95,000



Approximately 10.09 acres comprising two very gently sloping enclosures of permanent pasture accessible off a quiet parish road. The land has previously been used for livestock grazing and forage conservation purposes.

[Liskeard Farms & Land Agency](mailto:mark.bunt@kivells.com)
mark.bunt@kivells.com | 01579 345543

Farms Sale Agreed

KIVELLS

www.kivells.com

Keymelford Farm Buildings & Land Keymelford, Colebrook, Crediton, Devon



Lot 1 - Agricultural buildings and yard area with land surrounding extending to 0.41 acres.
Guide Price: £150,000

Lot 2 - Agricultural building with concrete pad and land surrounding extending to 0.41 acres.
Guide Price: £135,000

Lot 3 - A small grassland area extending to approximately 0.14 acres. **Guide Price: £25,000**

Exeter Farms & Land Agency
exeter@kivells.com | 01392 252262

Tor Court Farm Torbryan, Newton Abbot



- Four bedroom, Grade II Listed farmhouse
- Stone barns and a modern agricultural building with potential for alternative uses (stp)
- A truly hidden gem located in a peaceful yet accessible location
- Stunning, well-maintained pasture, orchards and woodland
- In all approximately 67.43 acres (27.28 hectares)

Guide Price: £1,210,000

Exeter Farms & Land Department
ian.caunter@kivells.com | 01392 252262

Farms Sale Agreed

KIVELLS

www.kivells.com

Sandenbury
Tregadillett, Launceston



- Smallholding in a lovely rural, yet accessible location
- Three bedroom bungalow (AOC) in need of modernising
- Range of pole barns
- Just over 40 acres of pasture land including some woodland
- A fantastic blank canvas
- EPC: D

Guide Price: £650,000

Holworthy Farms & Land Department
farms@kivells.com | 01409 259547

Sensham Farm
Marhamchurch, Bude



- Substantial modern farmhouse and separate first floor flat, both in need of modernisation
- Range of adaptable farm buildings with stabling
- Set in some 57 acres
- Not far from the North Cornish coast
- EPCs: D and F

Guide Price: £1,600,000

Holworthy Farms & Land Department
farms@kivells.com | 01409 259547

Farms Sale Agreed

KIVELLS

www.kivells.com

Trelissick Farm Sithney, Helston



In a beautiful sheltered setting, an 85 acre stock farm. For sale as a whole or in 3 lots.

LOT 1: Farmhouse, range of modern livestock and storage buildings, traditional stone barns (some with planning for residential development), set in just over 28 acres of land. EPC: E. **Guide Price: £1,300,000**

LOT 2: A super run of gently sloping pasture land extending to some 43½ acres. **Guide Price: £375,000**

LOT 3: Just over 14 acres and a former waterworks building with planning in principal for a dwelling. Guide Price: **£290,000**

Holsworthy Farms & Land Department
farms@kivells.com | 01409 259547

East Coombe Farm St. Pinnock, Liskeard



- Three bedroom, two bathroom, three reception room character detached house
- Splendid private location, with far reaching rural views
- Outbuildings with significant potential for alternative uses
- Located in rural East Cornwall between the wide expanses of Bodmin Moor and the South Cornish coastline
- In all 45.50 acres of land and woodland
- EPC: E & D

Guide Price: £900,000

Liskeard Farms & Land Department
liskeard@kivells.com | 01579 345543

Land Sale Agreed

KIVELLS

www.kivells.com

Land off Blackacre Lane St Columb | Guide Price £150,000 - £155,000



Approx 12.87 acres comprising a single enclosure of gently sloping land currently in a temporary ley. In recent years has been used for arable and vegetable growing purposes.
Liskeard Farms & Land Agency
mark.bunt@kivells.com | 01579 345543

Land at Viverdon Down St. Mellion, Saltash | Guide Price £465,000



Just under 45 acres of productive pasture land in a very accessible location with lovely far reaching views.
Holsworthy Farms & Land Agency
farms@kivells.com | 01409 259547

Land forming Part Oldsbrim Lot 1 Poundsgate, Newton Abbot | Guide Price £150,000



Approximately 26.19 acres incorporating a block of permanent grassland together with areas of rough grazing.
Exeter Farms & Land Department
ian.caunter@kivells.com | 01392 252262

Land forming Part Oldsbrim Lot 2 Poundsgate, Newton Abbot | Guide Price £75,000



Approximately 12.62 acres incorporating three immaculate field parcels down to permanent pasture.
Exeter Farms & Land Department
ian.caunter@kivells.com | 01392 252262

Land at Upton Farm Lot 1 Delabole | Guide Price £500,000



Approx. 39.59 acres comprising a ring fence block of level or very gently sloping land currently in arable and temporary pastures contained in large, easy working, enclosures.
Liskeard Farms & Land Department
mark.bunt@kivells.com | 01579 345543

Land at Upton Farm Lot 2 Delabole | Guide Price £1,050,000



Approx. 88.25 acres comprising a block of level or very gently sloping land currently in arable and temporary pastures.
Liskeard Farms & Land Department
mark.bunt@kivells.com | 01579 345543

Land Sale Agreed

KIVELLS

www.kivells.com

Land at Chudleighs Barn Holding Liskeard | Guide Price £100,000 - £125,000



Approximately 20.19 acres of pasture and amenity land with pretty stream frontage and some woodland included.
Liskeard Farms & Land Department
mark.bunt@kivells.com | 01579 345543

Land at Huxhill Weare Giffard, Bideford | Guide Price £550,000



A productive run of good quality arable and pasture land in a favoured location extending to approximately 49.38 acres.
Exeter Farms & Land Department
ben.hancock@kivells.com | 07760 887581

Tregovenek Bungalow, Attwood Lane, Pensilva, Liskeard, Cornwall PL14 5QU

Kivells have been instructed to market Tregovenek, a detached three/four bedroom bungalow in a quiet rural location, close to the village of Bolventor, with good size outside space. The bungalow is subject to an Agricultural Occupancy Condition.

Enquiries to W M Bunt BSc MRICS FAAV, Kivells, 7-8 Bay Tree Hill, Liskeard, Cornwall PL14 4BE

Tel: 01579 345543 or 07879 640970. Email: mark.bunt@kivells.com.