

HOLSWORTHY MARKET REPORT

Wednesday 13th May 2026

SALE TIMES

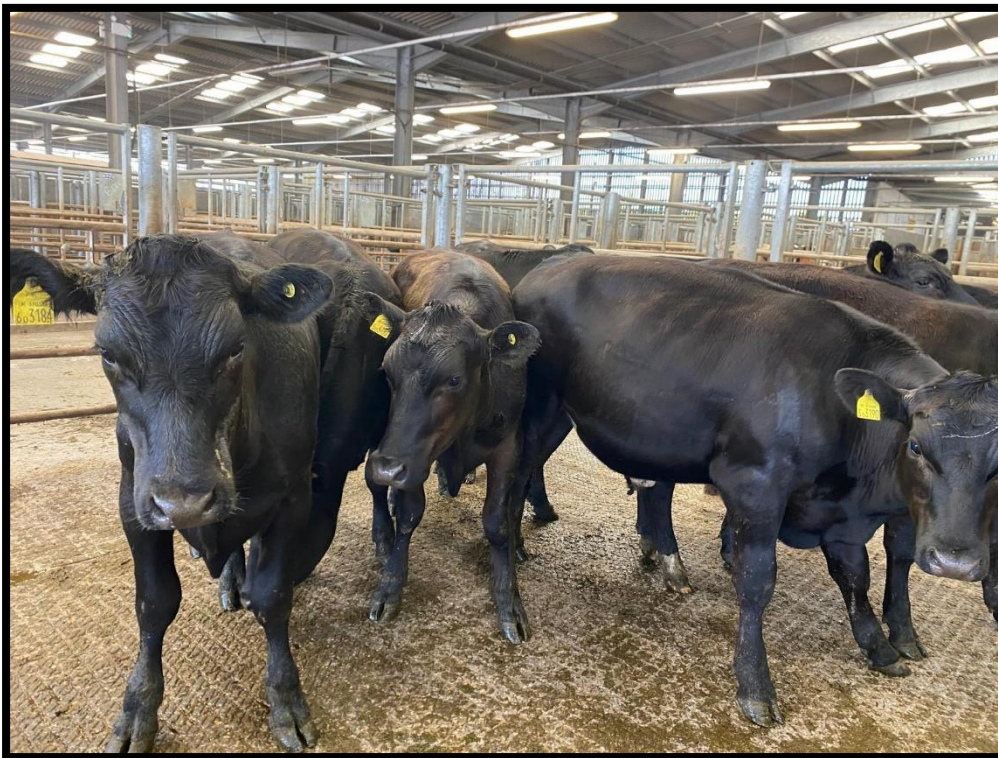
09:45 am - Draft Ewes followed by Finished Lambs

10:30 am - Store Lambs

09.45 am - Calves followed by Stirks

11:00 am - Store Cattle followed by Finished & OTM Cattle

11:00 am - Dairy Cattle



***Store cattle trade improved again this week, although numbers were tighter.
Top being £2170 for 2 British Blue steers 26mths
On behalf of Messrs RL Heard & Son of Hartland.***

More cattle required for next week!!

167 NEW SEASON LAMBS, 264 FAT HOGGS, 200 DRAFT EWES AND RAMS

09:45am

Auctioneer: Steve Prouse - 07767 895366

Ryan Walter - 07534 166251

NEW SEASON LAMBS

A few more lambs on offer and still a very strong trade and more needed to fulfil buyer's orders. Top per kilo this week was 457p for 43kgs £196.50 from Mike Hill of Bideford. Lashbrook Farms of Bradford realised 455p for 41kgs £186.50 followed by Chris and Sally Prouse of Court Green, Clawton with 454p for 42kgs £190.50. Several pens around £200 to £201 for a pen sold by Steve Pitts of Bratton Clovelly.

FAT HOGGS

Still several hogs about meeting with a strong trade for the well fleshed hogs. Top being 431p for 44.2kgs £190.50 from Mr R Squire of Slade Farm, Honeychurch. 432p from 2 vendors, Graham Heard of Hartland 44.4kgs £188 and Steve Andrews of Holroyd, Shebbear 44.4kgs £188. Top per head being £205 from the Richards Family of Highampton.

DRAFT EWES

More on offer and a very fast trade. Suffolk x to £205 from John Gorman of Callington. Texel x ewes to £200 from 3 vendors. Mules to £175 and Hill Bred ewes to £141.

MORE EWES WANTED NEXT WEEK PLEASE!

COUPLES 41 EWES & 53 LAMBS

Smaller entry and still very much sought after. Doubles to £350 for a Suffolk x hogg and singles to £315 for 2 pens of Mule hogg singles all sold by Henry Banbury of Iddesleigh.

WEIGHT	TOP		AVERAGE	
	Per head	P/Kg TLW	Per head	P/Kg TLW
LAMBS				
32.1-39	165	434	151	421.8
39.1-45.5	200	457	188	444.7
45.6-52	200.50	435	196.70	419.7
52+	201	353	201	353
Overall	201	457	194.50	444.0
EWES				
Light	141		Overall Average: 143.48	
Heavy	205			
Rams	190		161	



**FURTHER ENTRIES INVITED PLEASE TO STEVE PROUSE 07767895366
OR RYAN WALTER ON 07534 166251**

LEVEL UP YOUR FARMING SKILLS WITH TORCH VETS!

Ready to gain hands-on expertise and stay ahead in the farming? Join our Torch Farm Skills Courses - designed to empower you with practical knowledge, from animal health to farm management and everything in between!

Why join?

- Industry-leading experts
- Tailored, interactive sessions held in small groups for maximum tuition time.
- Skills to boost your farm's productivity
- With courses in AI, Foot trimming, Mastering Medicines, calf rearing, Udder health, Lambing courses and so much more there is something for everyone whether you are new to the industry or fancy updating your knowledge!

Don't miss out on this opportunity to invest in your future.

Register your interest today for 2025 dates by emailing events@torchvets.com



Independent vets, dedicated care

Bideford
01237 870456

Holsworthy
01409 331007

South Molton
01769 610000

Ilfracombe
01271 879516



torchfarmvets.com
info@torchfarmvets.com

280 CALVES – 09.45 am

Auctioneers: Tim Kivell – 07788 281900

Sam Hutchings – 07553 307293

MILK CALVES

As expected, we saw a smaller entry of rearing calves with 280 through the ring. Another week where trade remains sky high especially for those 2nd quality calves with new buyers ringside with plenty of appetite. Michael Braunton, Helland presented a fantastic run of quality calves with his strongest Blue bull reaching £885, other strong sorts which drew for £865 and £845 for further Blues in from O Petherick & Son, Kilkhampton. Younger Blue bulls saw lots of interest and rose to £770 for a top-notch type for John Cann, Highampton, £770 Samuel Down, Lapford other £735 x2 Steve Furse, Ashwater, £720 Bradley Farming LTD and £705 for Angus Heyward for Beckwell Farms, **63 Blue bulls average £644!** Angus another fast trade and soared up to £820 for a superb bull in from Ranches LTD who sold more to £740 and £730, £618 for younger sorts in from Bradley Farming LTD and £582 for Andrew Jones, St Thomas. A beautiful Limousin bull attained £745 in from Rachel Skinner, Halwill who sold another behind at £690, more at £660 x2 and £610 for Samuel Down again, **all Limousin bulls average £659.** Katie Hoare drove up from Tideford and sold Herefords well to £670 and £555, more to £530 for Dave Furse, Ashwater and £515 for Nickels Farm Partnership coming down from Newton Tracey. Young fresh Charolais bulls to £635 x2 for Robert Harris, Winkleigh and more to £630 for Rachael Poole, Milton Damerel. Heifers sold away to £765 for a strong Blue in from O Petherick & Son, others at £665 and £655 for Angus Heyward, £638 x2 for both Bradley Farming LTD and Samuel Down. Well grown Angus heifers hit £700 for a sweet pair from Ranches who sold more at £670. Shapley Limousin heifers parted at £690 for Samuel Down followed by Hereford heifers to £490 and £470 for Katie Hoare, and £455 for Harry Gilbert, Petrockstowe.

MILK CALVES						
BREED	BULLS			HEIFERS		
	No	Top	Ave	No	Top	Ave
Angus x	32	820	523	25	700	424
Limousin x	6	745	659	12	690	503
British Blue x	63	885	644	42	765	554
Hereford x	30	670	374	32	490	328
Charolais x	6	635	527	2	552	474
Friesian	16	300	213	-	-	-
Devon x	-	-	-	1	450	450

FOR SALE BY PRIVATE TREATY

3 x Yearling Male Llamas
Contact Tim Kivell on 07788 281900



DAIRY SIRED BULLS

Friesian bulls made £300 for AR Mitchell, St Kew others at £290 V & M Brown, £290 Harvey Bros, £220 JP Hobbs and £220 x2 for Katie Hoare again. Dairy Shorthorns to £230 for Rachel Poole and Ayrshire bulls to £200 x3 for AJ & JA Heard, Hartland.

Please pre-enter calves with the office on 01409 253275.



Dairy, Beef and Sheep Clubs
Data Analysis



Competitively priced farm medicines
Live stock fertility testing and advice



Vet Tech services
Disease Prevention



Penbode
Farm Vets Since 1840

Holsworthy
Stratton
Bradworthy
Camelford

www.penbodevets.co.uk

160 STORE CATTLE – 11:00am
Auctioneer: David Kivell - 07899 960272

Numbers tighter this week, however trade remained strong. Several stronger 18-20mth stores saw the trade stronger with most steers £1800+. Top today was £2170 for 2 26mth British Blues from Messrs RL Heard & Son of Hartland whose Montbeliarde steers were £2130. Several British Blues with condition topped at £2010 for 2 at 20mths from Mr SW Graham, Bude. Others from Messrs E Daniel & Son £1990 & £1860. 17mth Dairy x Charolais from Mr GT Daniel of Launceston £1840. Natives sold well, top to £2000 for 2 25mth steers from Mr SO Metherell of Welcombe. Devons from Mr D Folland of Barnstoke £1860. Herefords also selling well, top to £1850 for 2 from Mr A Vallance of Okehampton, others from Messrs H & M Thorne of Umberleigh at £1800 (21mths). Heifers to £1950 for 2 22mth British Blues from Mr SW Graham of Bude who sold others at £1940 (2). 5 British Blues 21mths from Messrs G Daniel & Son of Holsworthy to £1780, plenty at £1500+.



YOUNGER CATTLE

Another very strong trade up again on last week. 13mth Aberdeen Angus steers from Messrs Ranches Farms Ltd to £1560 (6), 8 14mth Aberdeen Angus' from Ashwater Farms, Winkleigh to £1460, 8 younger 8mth Aberdeen Angus steers again from Messrs Ranches to £1090 (5). **More young 8-10mth cattle required!** Single suckled South Devon steers 10mths from Mr P Marjason of Torrington to £1480, others to £1380 (3). Young feeding bulls to £1500 for a 9mth Hereford from Mr A Vallance of Okehampton.

GRAZING COWS

£1880 was the top this week for a 6yr old South Devon cow from Mr J Collings of Launceston whose second South Devon cow sold well at £1800.

**To book in stores or arrange an on-farm valuation, call:
Alec Shadrack 07767 896136, Charlie Kivell 07794 000325 or
Holsworthy Office 01409 253275**

f @KivellsProperty



Your **Development Land and Planning Team** here at Kivells have housebuilders and developers who are interested in the right sites – from small family run builders who are looking for just 10 plots to large national housebuilders who want sites for 100 plus houses.

If you own land on the edge of a large village or town with good access and road frontage, we would be delighted to chat with you about your land and if there is a chance of planning for housing development in the future. With the recent reforms to the planning system, this could be an opportunity to add value to your land that could work harder for you.



Contact your Development Land & Planning Team today to discuss your options.



Oliver Keates BSc (Hons)
Dip TP, MRTPI
Head of Development Land
and Planning Services
07554 060370



Mark Bromell BSc (Hons)
MRICS FAAV FLAA
Director
07966 430001



Mark Bunt
BSc MRICS FAAV
Director
07879 640970



Simon Alford
Director
07789 980203



Thomas Rattray
BSc (Hons) MRICS FAAV
Director
07813 016804



Claire Quick
BSc (Hons) MRICS FAAV
Rural Chartered Surveyor
07789 980204



Ian Caunter BSc (Hons)
MRICS FAAV FLAA
Rural Chartered Surveyor
07813 068935



Sam Turner
MNAEA
Director
07951 240305



Daniel Stokes
MNAEA
Director
07581 006203

FORTHCOMING DAIRY SALES

WEDNESDAY 30TH MAY
HOLSWORTHY LIVESTOCK MARKET

Entries to date include over 30 freshly calved cows and heifers, 8 in-calf heifers and 20 bulling heifers.

Further entries invited to 01409 253275 / dairy@kivells.com



HOLSWORTHY MARKET HEALTH HUB

Your Local Farming Health Hub at Holsworthy Livestock Market



Market Nurse

- FREE service offering clinical assessment and referrals - no appointment needed!
- Every Wednesday - 8am-10am/12pm-4pm - Penbode Hut

Healthcare Assistant

- Providing mini-health checks e.g. blood pressure, blood sugar, BMI
- 3rd Wednesday of the month - Market Café

Community Navigator

- Connecting you to local organisations and support
- 2nd Wednesday each month - Market Café/Kivells Mobile Auction Office

Find us on Facebook @
Holsworthy Market Health Hub



2026 SALE DATES



Monthly Live & Online Collective Sales
of Machinery, Vehicles & Implements

Holsworthy Market

SATURDAY 7TH FEBRUARY

SATURDAY 7TH MARCH

SATURDAY 11TH APRIL

SATURDAY 9TH MAY

SATURDAY 13TH JUNE

SATURDAY 4TH JULY

SATURDAY 1ST AUGUST

SATURDAY 5TH SEPTEMBER

SATURDAY 3RD OCTOBER

SATURDAY 7TH NOVEMBER

SATURDAY 5TH DECEMBER

See our calendar for
full list of events



In addition to on-farm sales held throughout the year covering the whole of the South West

See our website for more info!

WWW.KIVELLS.COM | CALL: 01409 253253 | EMAIL: MACHINERY@KIVELLS.COM

KIVELLSMACHINERY.MARTEYE.IE

LARK PLANT HIRE LTD

PLANT HIRE, HAULAGE & AGRICULTURAL
CONTRACTORS



FORAGING SERVICES

ALSO AVAILABLE
AS REQUIRED

Triple Mowers
Double Mowers
Tedding
50ft Rake
30 ft Rake
4 Silage Trailers
Buckrake
Loading Shovel



LIME SPREADING

Two types of lime
and sea sand for
your
spreading
requirements

FREE soil testing!



OVERSEEDING

For all herbal ley
overseeding, grass,
rape,
wild bird seed and
cover crops



All available for 2024 Season! Email: office@larkplant.co.uk

Call Office: 01409 211214

Ian: 07939 538902 or Rob: 07854 362450

Market Prices

Mart Customers get Daily Prices for free

Sign up or upgrade
your plan with your
mart account
number* for market
prices 12pm & 8pm
daily, for free.

*Usually found on your sales
invoice or statement.

marketprices.laa.co.uk



Market Prices

The screenshot shows the 'Market Prices' app interface. At the top, there's a header with the LAA logo, the text 'Market Prices', a user profile icon, and a menu icon. Below the header is a 'Filters' button. The main content is a table with a light green header for 'Old Season Lambs 12/03/24'. The table has columns for 'Number' and 'Price p/kg'. The rows list different lamb categories: Super Light (17-25.4kg), Light (25.5-32kg), Standard (32.1-39kg), Medium (39.1-45.5kg), Heavy (45.6-52kg), Other (over 52kg), and SQQ (25.5-45.5kg). A 'Total' row is at the bottom of this section. Below this, another section for 'Cull Ewes' is partially visible.

Old Season Lambs 12/03/24		Total	
	Number	Price p/kg	
Super Light (17-25.4kg)	121	253.7	
Light (25.5-32kg)	934	317.4	
Standard (32.1-39kg)	4273	365.9	
Medium (39.1-45.5kg)	10207	391.8	
Heavy (45.6-52kg)	8351	390.0	
Other (over 52kg)	2947	377.6	
SQQ (25.5-45.5kg)	15414	380.1	
Total	26833	382.4	

Below the table, the 'Cull Ewes' section is partially visible, showing a 'Total' column.



Renew your VAN Number

EU legislation requires a Veterinary Attestation Number (VAN) or Farm Assurance status to sell livestock for slaughter for export outside of the UK.

VAN numbers expire every 12 months
Don't forget to renew.

Speak to your local Veterinary Practise to renew.

Share your new VAN number with your mart.

ONE.LIVE.HUB



Tradition Meets Technology

Kivells, A complete service for all your agriculture and property needs across Devon, Cornwall and beyond.



Find us on



MartEye

KIVELLS

www.kivells.com

Farms For Sale

KIVELLS

www.kivells.com

Vennbrook Varley Farm, PRIXFORD, Barnstaple

- 100 acre residential and stock farm
- Attractive, well proportioned bungalow (AOC)
- Useful range of livestock and storage buildings
- Ring fenced pasture land
- Superb views
- EPC C [77]

Guide Price: £1,800,000

Holworthy Farms & Land Department
farms@kivells.com | 01409 259547



Rolstone Bungalow Morchard Bishop, Crediton

- A wonderfully presented and immaculate four bedroom Bungalow, subject to an Agricultural Occupancy Condition (AOC)
- Adjacent Workshop and Office Unit
- A useful Agricultural Building
- Well maintained productive Pasture Land
- In all totalling approximately 10.74 acres (4.34 hectares)
- EPC: C

Guide Price: £925,000

Exeter Farms & Land Department
exeter@kivells.com | 01392 252262



Farms For Sale

KIVELLS

www.kivells.com

Little Clamoak Farm Bere Ferrers, Yelverton

- A highly private and well located residential farm 4 bedroom dwelling, subject to AOC
- Adaptable range of farm buildings
- Productive run of land extending to just over 26 acres in all
- Sought after location on the Bere Peninsula overlooking the River Tamar
- Freehold with vacant possession available
- EPC: F

Guide Price: £725,000

Exeter Farms & Land Department
exeter@kivells.com | 01392 252262



Farms For Sale

KIVELLS

www.kivells.com

Holdstrong Farmhouse Coryton, Okehampton

- A delightful 5 bedroom 17th Century Devon Longhouse
- Situated in a beautiful rural setting on the edge of the Dartmoor National Park
- Superb views
- Stabling and further outbuildings
- Pond
- Coppice
- In all about 15.87 acres
- Freehold with vacant possession available
- EPC: E

Guide Price: £850,000

Exeter Farms & Land Department
exeter@kivells.com | 01392 252262



Farms For Sale

KIVELLS

www.kivells.com

Puddaven Farm North Bovey, Newton Abbot

- Immaculate Farmhouse
- Stunning two bedroom Holiday Cottage
- Outbuildings and stabling
- Outdoor equine menage
- Well-maintained pasture land
- Versatile lifestyle property
- Far reaching views
- In all totalling approximately 32.35 acres (13.09 hectares)
- EPC: E & D

Guide Price: £1,695,000

Exeter Farms & Land Department
exeter@kivells.com | 01392 252262



Oxenpark Farm Hersham, Bude

- Wonderful setting with far reaching views over Bude Bay and the North Cornish coast.
- Three bedroom farmhouse and four further cottages
- Superb range of outbuildings suitable for a variety of uses
- In all about 16.18 acres with further land available by separate negotiation.
- Freehold
- Available as a whole or in three lots
- EPC: D, C, C, C & D

Lot 1: Three bedroom farmhouse, two holiday cottages, one further cottage and a lodge. Range of adaptable farm buildings, income generating wind turbine and just over 16 acres.
Guide Price: £1,395,000

Lot 2: A useful block of 45½ acres of pasture and arable land including 3 acres of mature woodland.
Guide Price: £515,000

Lot 3: A single gently sloping pasture field extending to 6.34 acres.
Guide Price: £85,000

Guide Price (as a whole): £1,995,000

Holsworthy Farms & Land Department
farms@kivells.com | 01409 259547



Farms For Sale

KIVELLS

www.kivells.com

Trehere Farm Trewidland, Liskeard

- Substantial four bedroom (all en-suite) modern house enjoying extensive country views
- Range of buildings currently comprising a livery yard with potential for alternative uses
- Approximately 36.51 acres of pasture, amenity woodland and a sand school
- Wonderful rural location yet conveniently situated close to several villages and the town of Liskeard
- EPC: D

Guide Price: £995,000

Liskeard Farms & Land Department
mark.bunt@kivells.com | 01579 345543



Farms For Sale

KIVELLS

www.kivells.com

Barton Moor Meshaw, South Molton, Devon

- Three bedroom detached bungalow (AOC)
- Range of modern farm buildings with Class Q Permission for five dwellings
- Desirable and accessible location
- Freehold with vacant possession available
- In all about 4.22 acres
- EPC: 23 Band F

Guide Price: £495,000

Exeter Farms & Land Department
ben.hancock@kivells.com | 01392 252262



Farms For Sale

KIVELLS

www.kivells.com

Landabethick Blisland, Bodmin

- Charming, 6 bedroom detached farmhouse
- Excellent range of traditional farm buildings suitable for a variety of uses
- In all about 77 acres comprising a combination of good agricultural land and woodland
- Parking, garaging and workshop space
- Unrivalled, private position at the end of a private drive
- Freehold with vacant possession available
- EPC: D

Guide Price: £1,350,000

Exeter Farms & Land Department
ben.hancock@kivells.com | 01392 252262



Farms For Sale

KIVELLS

www.kivells.com

Great Huish Farm Tedburn St. Mary Exeter

- Grade II Listed detached four bedroom house with three reception rooms
- Two further cottages providing income generation or multi-generation living
- Ring Fenced Farm
- Range of modern and traditional farm buildings
- Development opportunities with some planning consent in place
- Easy access to the A30 & M5
- In all about 8.92 acres of agricultural land with further land available by separate negotiation.
- EPC: C

Guide Price: £1,395,000

Exeter Farms & Land Department
exeter@kivells.com | 01392 252262



Farms For Sale

KIVELLS

www.kivells.com

West Burrow Farm Bratton Clovelly, Okehampton

A quietly set rural small holding offering huge potential.

- Grade II* Listed thatched farmhouse in need of modernisation.
- 3 beds, 2 receptions.
- Two adjoining traditional barns.
- Land and woodland
- EPC: Exempt as a listed property

Guide Price: £645,000

Holsworthy Farms & Land Department
farms@kivells.com | 01409 259547



Farms For Sale

KIVELLS

www.kivells.com

Fern Hill Farm Mount, Bodmin

- Farm with significant development potential
- Range of agricultural and equestrian buildings
- 60.29 acres of land including productive pasture
- Two bedroom lodge
- Planning for farm dwelling and residential caravan
- Located in a super rural location with far reaching valley views
- Freehold with vacant possession upon completion

Guide Price: £1,000,000

Liskeard Farms & Land Department
mark.bunt@kivells.com | 01579 345543



Development Site For Sale

KIVELLS

www.kivells.com

Development Site at Lower Newton Farm Zeal Monachorum, Crediton, Devon

- Valuable residential development opportunity
- Range of agricultural buildings with planning permission for demolition and creation of three new build, detached four and three bedroom dwellings
- Potential under extension of Permitted Development Rights for retention and conversion of the existing buildings (Clarkson's Law - Maximum 10 dwellings), subject to planning
- Additional land available

Guide Price: £450,000

Exeter Farms & Land Department
simon.alford@kivells.com | 01392 252262



Aerial view looking north west

Land For Sale

KIVELLS

www.kivells.com

Land At Trevillies

St. Keyne, Liskeard | Guide Price £375,000 -



Approximately 45.64 acres of productive arable/pasture land and amenity woodland with mains water connected. Freehold with vacant possession upon completion.

Liskeard Farms & Land Department
mark.bunt@kivells.com | 01579 345543

Land at Stoke Canon

Exeter, Devon | Offers in Excess of £375,000

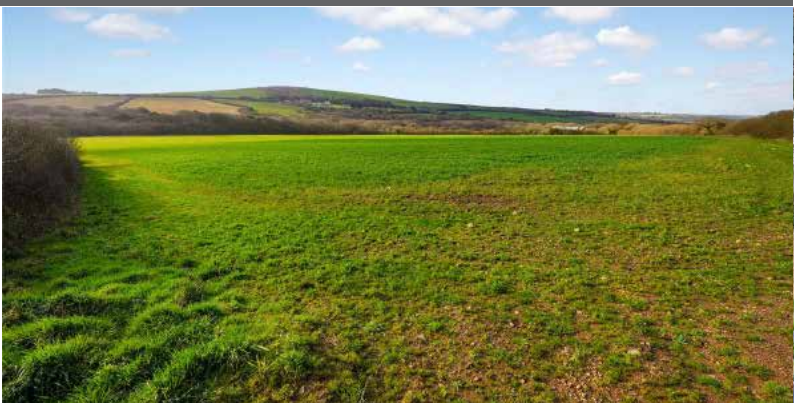


A highly productive run of level arable and pastureland with livestock handling pens extending to just under 46 acres.

Exeter Farms & Land Department
simon.alford@kivells.com | 01392 252262

Land at Criftoe Farm

Tregonetha | Guide Price £675,000 - £700,000



Approximately 64.98 acres of quality cropping land and amenity woodland and a useful modern farm building (with potential for alternative uses, subject to planning).

Liskeard Farms & Land Department
mark.bunt@kivells.com | 01579 345543

Land Off Yorke Road

Dartmouth | Guide Price £195,000



Approximately 12.26 acres in two separate field parcels both down to permanent grassland, previously grazed with livestock.

Exeter Farms & Land Department
exeter@kivells.com | 01392 252262

Land at Polskeys Farm

Roche, St. Austell | Guide Price £495,000



Approximately 59.18 acres of pasture and conservation land accessible off a quiet parish road with mains water connected, a useful livestock building and yard.

Liskeard Farms & Land Department
mark.bunt@kivells.com | 01579 345543

Land at Four Beeches Farm

Sourton, Okehampton | Guide Price £224,000



Approximately 26.25 acres of productive pasture land with easy access to the A386. Suitable for amenity, equestrian and traditional farming.

Exeter Farms & Land Department
exeter@kivells.com | 01392 252262

Land at Higher Reedy Mill

Trewidland, Liskeard | Guide Price £50,000



Approximately 4.39 acres of pasture land, accessible off a quiet parish road close to the village of Trewidland in a quiet rural location with far reaching views.

Liskeard Farms & Land Department
mark.bunt@kivells.com | 01579 345543

Land & Buildings at Horwood

Horwood, Bideford



A fantastic block of just over 166 ½ acres of productive arable land and a useful range of modern agricultural buildings. **Available in two lots.**

- **LOT 1:** Just over 132 acres of arable land with a range of modern and adaptable farm buildings.
Guide Price: £1,600,000
- **LOT 2:** Circa 34 ½ acres of arable land in a single level field.
Guide Price: £400,000

Holsworthy Farms & Land Agency
farms@kivells.com | 01409 259547

Land & Buildings For Rent

KIVELLS

www.kivells.com

GRASS KEEP FOR SALE BY INFORMAL TENDER
Rosedown Farm, Hartland, Devon EX39 6AH



Approximately 78.41 acres available in one lot, to cut and/or graze with sheep. Available 1st June 2026 to 31st October 2026. Tenders to be submitted by 12 noon on Wednesday 20th May 2026.

Toby Theobald
toby.theobald@kivells.com | 01409 253275

GRASS KEEP FOR SALE BY INFORMAL TENDER
Land known as the Prairie Land, North of Tor Down, Exbourne EX20 3QU



58.95 acres available in one lot for cutting and/or grazing purposes. Available from 1st June 2026 to 31st October 2026, Tenders to be submitted by 12 noon on Tuesday 19th May 2026.

Toby Theobald
toby.theobald@kivells.com | 01409 253275

GENERAL PURPOSE BUILDING TO LET
Stourscombe, Launceston | £595 pcm



A new 45' x 30' shed at Stourscombe near Launceston, with great access to A30/A388. Ideal for storage.

Thomas Rattray
thomas.rattray@kivells.com | 07813 016804

Land for Auction

Wednesday 27th May, 7.00pm

Venue: Lifton Strawberry Fields, Lifton, Devon PL16 0DE

KIVELLS

www.kivells.com

Penloe Field

Woolley, Bude | Auction Guide Price £65,000 - £75,000
For sale by public auction - Wednesday 27th May



Approximately 5.59 acres in a quiet rural setting with lovely views and a useful open sided storage building - 27' x 15' (8.23m x 4.57m) with a rain water harvest tank to one side.

Holsworthy Farms & Land Agency
Farms@kivells.com | 01409 259547

Land at Ugworthy

Chilsworthy, Holsworthy | Auction Guide Price £45,000 - £50,000
For sale by public auction - Wednesday 27th May



Extending to some 5.67 acres, the Land at Ugworthy comprises a mainly level pasture field with natural hedge bank boundaries and a small corrugated sheet clad shed (in poor repair) and an ancient burial ground.

Holsworthy Farms & Land Agency
Farms@kivells.com | 01409 259547

Land at Milton Damarel

Holsworthy | Auction Guide Price £20,000
For sale by public auction - Wednesday 27th May



This pretty 2.42 acre field comprises a mainly level paddock which benefits from excellent access from the adjoining main road on its northern boundary. The land would be suitable for amenity purposes, keeping livestock or ponies.

Holsworthy Farms & Land Agency
Farms@kivells.com | 01409 259547

Land at Broad Parkham

Parkham, Bidford I | Auction Guide Price £75,000 - £85,000
For sale by public auction - Wednesday 27th May



Some 8.50 acres benefiting from road frontage and excellent access. The land comprises a very gently sloping pasture field which is enclosed within natural hedge banks.

Holsworthy Farms & Land Agency
Farms@kivells.com | 01409 259547

Land West of Wainhouse Corner

St. Gennys, Bude | Auction Guide Price £140,000 - £150,000
For sale by public auction - Wednesday 27th May



A useful block of just over 15.5 acres of pasture land, with excellent access from the adjoining main road. The land is very gently sloping and extremely well fenced.

Holsworthy Farms & Land Agency
Farms@kivells.com | 01409 259547

Land at Furzedon Field

Trewidland, Liskeard | Auction Guide Price £110,000 - £115,000
For sale by public auction - Wednesday 27th May



Approximately 13.80 acres of pasture land in a ring fence block with a woodland stream boundary and fringe and mains water connected to three troughs.

Liskeard Farms & Land Agency
mark.bunt@kivells.com | 01579 345543

Land for Auction

Wednesday 27th May, 7.00pm

Venue: Lifton Strawberry Fields, Lifton, Devon PL16 0DE

KIVELLS

www.kivells.com

Land at St Keyne

Liskeard | Auction Guide Price £5,000 - £10,000

For sale by public auction - Wednesday 27th May



Approximately 0.40 acres of woodland and amenity land accessible off a quiet parish road, in a picturesque valley location with a woodland stream running through.

Liskeard Farms & Land Agency

mark.bunt@kivells.com | 01579 345543

Land at Kelynack

St. Just, Penzance | Auction Guide Price £130,000

For sale by public auction - Wednesday 27th May



An excellent opportunity to purchase a 13.54 acre block of predominantly level agricultural land in a superb position, just inland from the West Cornish coastline.

Holsworthy Farms & Land Agency

Farms@kivells.com | 01409 259547

2026 Auction Dates

Wednesday 27th May

Wednesday 24th June

Wednesday 29th July

Wednesday 2nd September

Wednesday 7th October

Wednesday 11th November

Thinking of selling by auction? Contact our experienced team today for a **FREE** no obligation auction appraisal.

www.kivells.com

Previous Auction Results

Wednesday 22nd April, 7.00pm

KIVELLS

www.kivells.com

Trefuge Bungalow

Coads Green, Launceston, Cornwall

- For sale by Public Auction on Wednesday 22nd April, 7.00pm at Lifton Strawberry Fields, Lifton, Devon PL16 0DH
- Three bedroom bungalow of non traditional construction and in need of updating
- Set in just over 5 acres of gently sloping pasture
- Useful Nissen hut storage shed
- Lovely quiet rural setting with superb moorland views
- EPC = E (46)

Auction Guide Price: £250,000

SOLD: £358,000

Holsworthy Farms & Land Department

farms@kivells.com | 01409 259547



Previous Auction Results

Wednesday 22nd April, 7.00pm

KIVELLS

www.kivells.com

Land & Yard known as Tall Trees

Kit Hill, Callington | Auction Guide Price £25,000

SOLD: £56,000



A great opportunity to acquire a yard, building and 1¼ acres in need of upgrading. Road frontage and good access.

[Holsworthy Farms & Land Agency](mailto:Farms@kivells.com)
Farms@kivells.com | 01409 259547

Land at Sladelands Farm

Botus Fleming, | Auction Guide Price £130,000 - £140,000

SOLD: £140,000



Approximately 9.95 acres of pasture, amenity and woodland and a range of buildings currently providing a stable yard. The land is accessible off a quiet parish road and has mains electricity and mains water available.

[Liskeard Farms & Land Agency](mailto:mark.bunt@kivells.com)
mark.bunt@kivells.com | 01579 345543

Land lying north of The Pastures

Bratton Clovelly | Auction Guide Price £50,000 - £75,000

SOLD: £68,000



2.11 acres of pasture land, great for livestock grazing or as a pony paddock. Some long term potential, subject to gaining the necessary planning consents.

[Holsworthy Farms & Land Agency](mailto:Farms@kivells.com)
Farms@kivells.com | 01409 259547

Land & Buildings at Klymiarven

Tintage | Auction Guide Price £175,000 - £195,000

SOLD: £275,000



Approximately 13.25 acres of level pasture land with a small range of buildings and yard. The land is situated in a great location in the village, not far from the North Cornish coast.

[Holsworthy Farms & Land Agency](mailto:Farms@kivells.com)
Farms@kivells.com | 01409 259547

Land at Yonder Park

Ebberley, Torrington | Auction Guide Price £295,000 - £315,000

SOLD: £315,000



A fantastic block of approximately 31.42 acres of arable land, divided in to four good sized fields and benefiting from good access from the adjoining parish road and far reaching countryside views.

[Holsworthy Farms & Land Agency](mailto:Farms@kivells.com)
Farms@kivells.com | 01409 259547

Land at Lower Wringworthy

Morval, Looe | Auction Guide Price £90,000 - £95,000

SOLD: £95,000



Approximately 10.09 acres comprising two very gently sloping enclosures of permanent pasture accessible off a quiet parish road. The land has previously been used for livestock grazing and forage conservation purposes.

[Liskeard Farms & Land Agency](mailto:mark.bunt@kivells.com)
mark.bunt@kivells.com | 01579 345543

Farms Sale Agreed

KIVELLS

www.kivells.com

Keymelford Farm Buildings & Land Keymelford, Colebrook, Crediton, Devon



Lot 1 - Agricultural buildings and yard area with land surrounding extending to 0.41 acres.
Guide Price: £150,000

Lot 2 - Agricultural building with concrete pad and land surrounding extending to 0.41 acres.
Guide Price: £135,000

Lot 3 - A small grassland area extending to approximately 0.14 acres. **Guide Price: £25,000**

Exeter Farms & Land Agency
exeter@kivells.com | 01392 252262

Tor Court Farm Torbryan, Newton Abbot



- Four bedroom, Grade II Listed farmhouse
- Stone barns and a modern agricultural building with potential for alternative uses (stp)
- A truly hidden gem located in a peaceful yet accessible location
- Stunning, well-maintained pasture, orchards and woodland
- In all approximately 67.43 acres (27.28 hectares)

Guide Price: £1,210,000

Exeter Farms & Land Department
ian.caunter@kivells.com | 01392 252262

Farms Sale Agreed

KIVELLS

www.kivells.com

Sandenbury
Tregadillett, Launceston



- Smallholding in a lovely rural, yet accessible location
- Three bedroom bungalow (AOC) in need of modernising
- Range of pole barns
- Just over 40 acres of pasture land including some woodland
- A fantastic blank canvas
- EPC: D

Guide Price: £650,000

Holworthy Farms & Land Department
farms@kivells.com | 01409 259547

Sensham Farm
Marhamchurch, Bude



- Substantial modern farmhouse and separate first floor flat, both in need of modernisation
- Range of adaptable farm buildings with stabling
- Set in some 57 acres
- Not far from the North Cornish coast
- EPCs: D and F

Guide Price: £1,600,000

Holworthy Farms & Land Department
farms@kivells.com | 01409 259547

Farms Sale Agreed

KIVELLS

www.kivells.com

Trelissick Farm Sithney, Helston



In a beautiful sheltered setting, an 85 acre stock farm. For sale as a whole or in 3 lots.

LOT 1: Farmhouse, range of modern livestock and storage buildings, traditional stone barns (some with planning for residential development), set in just over 28 acres of land. EPC: E. **Guide Price: £1,300,000**

LOT 2: A super run of gently sloping pasture land extending to some 43½ acres. **Guide Price: £375,000**

LOT 3: Just over 14 acres and a former waterworks building with planning in principal for a dwelling. **Guide Price: £290,000**

Holsworthy Farms & Land Department
farms@kivells.com | 01409 259547

East Coombe Farm St. Pinnock, Liskeard



- Three bedroom, two bathroom, three reception room character detached house
- Splendid private location, with far reaching rural views
- Outbuildings with significant potential for alternative uses
- Located in rural East Cornwall between the wide expanses of Bodmin Moor and the South Cornish coastline
- In all 45.50 acres of land and woodland
- EPC: E & D

Guide Price: £900,000

Liskeard Farms & Land Department
liskeard@kivells.com | 01579 345543

Land Sale Agreed

KIVELLS

www.kivells.com

Land off Blackacre Lane

St Columb | Guide Price £150,000 - £155,000



Approx 12.87 acres comprising a single enclosure of gently sloping land currently in a temporary ley. In recent years has been used for arable and vegetable growing purposes.
Liskeard Farms & Land Agency
mark.bunt@kivells.com | 01579 345543

Land at Viverdon Down

St. Mellion, Saltash | Guide Price £465,000



Just under 45 acres of productive pasture land in a very accessible location with lovely far reaching views.
Holsworthy Farms & Land Agency
farms@kivells.com | 01409 259547

Land forming Part Oldsbrim Lot 1

Poundsgate, Newton Abbot | Guide Price £150,000



Approximately 26.19 acres incorporating a block of permanent grassland together with areas of rough grazing.
Exeter Farms & Land Department
ian.caunter@kivells.com | 01392 252262

Land forming Part Oldsbrim Lot 2

Poundsgate, Newton Abbot | Guide Price £75,000



Approximately 12.62 acres incorporating three immaculate field parcels down to permanent pasture.
Exeter Farms & Land Department
ian.caunter@kivells.com | 01392 252262

Land at Upton Farm Lot 1

Delabole | Guide Price £500,000



Approx. 39.59 acres comprising a ring fence block of level or very gently sloping land currently in arable and temporary pastures contained in large, easy working, enclosures.
Liskeard Farms & Land Department
mark.bunt@kivells.com | 01579 345543

Land at Upton Farm Lot 2

Delabole | Guide Price £1,050,000



Approx. 88.25 acres comprising a block of level or very gently sloping land currently in arable and temporary pastures.
Liskeard Farms & Land Department
mark.bunt@kivells.com | 01579 345543

Land Sale Agreed

KIVELLS

www.kivells.com

Land at Chudleighs Barn Holding Liskeard | Guide Price £100,000 - £125,000



Approximately 20.19 acres of pasture and amenity land with pretty stream frontage and some woodland included.
Liskeard Farms & Land Department
mark.bunt@kivells.com | 01579 345543

Land at Huxhill Weare Giffard, Bideford | Guide Price £550,000



A productive run of good quality arable and pasture land in a favoured location extending to approximately 49.38 acres.
Exeter Farms & Land Department
ben.hancock@kivells.com | 07760 887581

Tregovenek Bungalow, Attwood Lane, Pensilva, Liskeard, Cornwall PL14 5QU

Kivells have been instructed to market Tregovenek, a detached three/four bedroom bungalow in a quiet rural location, close to the village of Bolventor, with good size outside space. The bungalow is subject to an Agricultural Occupancy Condition.

Enquiries to W M Bunt BSc MRICS FAAV, Kivells, 7-8 Bay Tree Hill, Liskeard, Cornwall PL14 4BE

Tel: 01579 345543 or 07879 640970. Email: mark.bunt@kivells.com.