



EXETER LIVESTOCK CENTRE

MARKET REPORT

MARCH 2026

Tuesday 24th March – TB Restricted (Orange Market) Sale



Tuesday 24th March

SALE OF TB RESTRICTED (ORANGE MARKET) CATTLE

Auctioneer: Simon Alford – 07789 980203

**Prime Cattle to £2607 (698kg x 374ppk)
Store Steers to £2260 – Store Heifers to £2160**

A decent number forward for our monthly sale of restricted cattle when we saw a good compliment of buyers whip up a trade very much parallel to recent strong unrestricted markets of late. Tuesday afternoons sale kicked off with a super run of expertly finished prime cattle from Bottor Rock Farms of Hennock who saw solid looking home grown steers rise to £2607 (698kg x 374ppk) for a British Blonde together with £2481 (694kg x 358ppk) which was given for their smart Bazadaise steer. Bottor Rock Farms also saw the better of four nicely covered dairy bred British Blue heifers realise £1998 (556kg x 360ppk). The store cattle section saw steers top at £2260 for a hefty Hereford (29m) from Andrew Shervington and Family in from Hittisleigh whilst Andrew Banbury of Crediton sold his later born (23m) Hereford for £2020. Plenty of those first rate, powerful British Blue steers about on Tuesday when we saw the very best (18m) rise to £2260 for David Horton and Family of Roborough, Plymouth followed by others at £2230 for Ross Fuller of Chulmleigh and £2100 for Andrew Banbury. The latter also saw well turned out Charolais bullocks (23m) draw £2230 and £2160 with South Devons (22m) coming back at £2000 and £1900 for Anthony Luscombe of Harberton and Sophie Rew in from Bampton respectively. Younger store steers saw a super trio of Limousins (15m) make a very creditable £1980 apiece for David Horton and Family. A trim Charolais store heifer (24m) from Andrew Banbury headed that section when fetching £2160 who also parted with a neat red Limousin female of a similar age for £1990. Anthony Luscombe was back and selling shapely South Devon heifers (28m) for £2040 as was David Horton and Family who saw well kept British Blue females (18m) reach £1920. Also, Ross Fuller saw his pairs of Blues sell to £1920 and £1890. As with the steers the better of the later born heifers came from David Horton and Family when there three Limousins (15m) eased to a worthy £1700 a life.

Please contact us if you are considering selling at our next sale (April 28th 2026) for further information and guidance on licencing procedure: Office 01392 251261 or Robert Armstrong 07791 484290.



Penbode Farm Vets

- Competitively priced farm medicines
- Dairy and beef fertility clubs
- 24/7/365 veterinary cover
- Livestock fertility testing and advice
- VetTech services
- In-house labs and lambing bays

www.penbodevets.co.uk
Holsworthy | Bradworthy | Stratton | Launceston | Camelford



KIVELLS Rural Professional
www.kivells.com

Exeter 01392 252262
Holsworthy 01409 253275
Launceston 01566 776886
Liskeard 01579 345543

Your Kivells Rural Professional Department offer a complete valuation and rural service.

- ✓ Capital Grants
- ✓ Compensation
- ✓ Renewables Advice
- ✓ Sustainable Farming Incentive
- ✓ Valuations
- ✓ Landlord/Tenant
- ✓ Planning

FORTHCOMING SALES

FRIDAY 20TH MARCH – EXETER LIVESTOCK CENTRE

Weekly Store Market to include 2nd Spring Judged Sale of Continental and Continental Cross Cattle

MONDAY 23RD MARCH – EXETER LIVESTOCK CENTRE

Weekly Prime Stock Market

TUESDAY 24TH MARCH – EXETER LIVESTOCK CENTRE

Monthly Sale of TB Restricted (Orange Market) Cattle

FRIDAY 27TH MARCH – EXETER LIVESTOCK CENTRE

Weekly Store Market to include Monthly Sale of Organic Cattle & Sheep plus Fortnightly Pig Sale

SATURDAY 28TH MARCH – BURRIDGE FARM, SEVEN CROSSES, TIVERTON EX16 8JS

Dispersal Sale of Machinery and Effects of the Late Eric Bolton

MONDAY 30TH MARCH – EXETER LIVESTOCK CENTRE

Weekly Prime Stock Market to include Easter Show & Sale of Spring Lambs

FRIDAY 3RD APRIL – EXETER LIVESTOCK CENTRE

GOOD FRIDAY – NO MARKET

MONDAY 6TH APRIL – EXETER LIVESTOCK CENTRE

EASTER MONDAY - Weekly Prime Stock Market

WEDNESDAY 8TH APRIL – EXETER LIVESTOCK CENTRE

Spring Show & Sale on behalf of the South Devon Herd Book Society

FRIDAY 10TH APRIL – EXETER LIVESTOCK CENTRE

Weekly Prime Stock Market to include 3rd Spring Judged Sale of Continental and Continental Cross Cattle, Sale of Dairy Cattle including English Gold Top Sale of Jerseys, Show & Sale of Suckled Calves and Stirks, Centurion Sheep Breeders Sale of Dorset Ewes & Rams, Show & Sale of Ewes and Lambs plus Fortnightly Pig Sale

MONDAY 13TH APRIL – EXETER LIVESTOCK CENTRE

Weekly Prime Stock Market

WEDNESDAY 15TH APRIL – EXETER LIVESTOCK CENTRE

Devon YFC Show & Sale

FRIDAY 17TH APRIL – EXETER LIVESTOCK CENTRE

Weekly Prime Stock Market to include Monthly Catalogued Sale of Beed Breeding Stock including Special Sales of Aberdeen Angus, Charolais & Salers Bulls & Females, Sale of Pedigree and Purebred Ewes and Lambs and Ewe Hoggs.

MONDAY 20TH APRIL – EXETER LIVESTOCK CENTRE

Weekly Prime Stock Market

FRIDAY 24TH APRIL – EXETER LIVESTOCK CENTRE

Weekly Store Market to include Monthly Sale of Organic Cattle & Sheep, Sale of Dairy Cattle plus Fortnightly Pig Sale

MONDAY 27TH APRIL – EXETER LIVESTOCK CENTRE

Weekly Prime Stock Market

TUESDAY 24TH MARCH – EXETER LIVESTOCK CENTRE

Monthly Sale of TB Restricted (Orange Market) Cattle

EXETER LIVESTOCK CENTRE

01392 251261

livestock@kivells.com

www.kivells.com

Farms | Land | Smallholdings

Thinking of selling?

Kivells are at the heart of the farming community throughout the westcountry and beyond and have been selling farms, land and smallholdings since 1885.



Our tailor made service includes;

- ✓ Personal and confidential service
- ✓ Experienced team of Farm Agents
- ✓ Tailor made marketing plans across a variety of platforms
- ✓ Network of contacts within the farming community
- ✓ Added value with advice on Tax, Planning and Stewardship



In-house
bespoke
brochures



Over 40,000
followers on
Social Media



Millions of
page views on
kivells.com,
Rightmove
& Zoopa



Coverage in
national and
regional
publications

With 140 years of industry experience, we pride ourselves in providing friendly and professional advice on all aspects of selling your farm, land or smallholding.

Puddaven Farm North Bovey, Newton Abbot

- Immaculate Farmhouse
- Stunning two bedroom Holiday Cottage
- Outbuildings and stabling
- Outdoor equine menage
- Well-maintained pasture land
- Versatile lifestyle property
- Far reaching views
- In all totalling approximately 32.35 acres (13.09 hectares)
- EPC: E & D

Guide Price: £1,800,000

Exeter Farms & Land Department
exeter@kivells.com | 01392 252262



Oxenpark Farm Hersham, Bude

- Wonderful setting with far reaching views over Bude Bay and the North Cornish coast.
- Three bedroom farmhouse and four further cottages
- Superb range of outbuildings suitable for a variety of uses
- In all about 16.18 acres with further land available by separate negotiation.
- Freehold
- Available as a whole or in three lots
- EPC: D, C, C, C & D

Lot 1: Three bedroom farmhouse, two holiday cottages, one further cottage and a lodge. Range of adaptable farm buildings, income generating wind turbine and just over 16 acres.

Guide Price: £1,395,000

Lot 2: A useful block of 45½ acres of pasture and arable land including 3 acres of mature woodland.

Guide Price: £515,000

Lot 3: A single gently sloping pasture field extending to 6.34 acres.

Guide Price: £85,000

Guide Price (as a whole): £1,995,000

Holsworthy Farms & Land Department
farms@kivells.com | 01409 259547



Trehere Farm Trewidland, Liskeard

- Substantial four bedroom (all en-suite) modern house enjoying extensive country views
- Range of buildings currently comprising a livery yard with potential for alternative uses
- Approximately 36.51 acres of pasture, amenity woodland and a sand school
- Wonderful rural location yet conveniently situated close to several villages and the town of Liskeard
- EPC: D

Guide Price: £995,000

Liskeard Farms & Land Department
mark.bunt@kivells.com | 01579 345543



Farms For Sale

KIVELLS

www.kivells.com

Landabethick Blisland, Bodmin

- Charming, 6 bedroom detached farmhouse
- Excellent range of traditional farm buildings suitable for a variety of uses
- In all about 77 acres comprising a combination of good agricultural land and woodland
- Parking, garaging and workshop space
- Unrivalled, private position at the end of a private drive
- Freehold with vacant possession available
- EPC: D

Guide Price: £1,350,000

Exeter Farms & Land Department
ben.hancock@kivells.com | 01392 252262



Farms For Sale

KIVELLS

www.kivells.com

Great Huish Farm Tedburn St. Mary Exeter

- Grade II Listed detached four bedroom house with three reception rooms
- Two further cottages providing income generation or multi-generation living
- Ring Fenced Farm
- Range of modern and traditional farm buildings
- Development opportunities with some planning consent in place
- Easy access to the A30 & M5
- In all about 8.92 acres of agricultural land with further land available by separate negotiation.
- EPC: C

Guide Price: £1,395,000

Exeter Farms & Land Department
exeter@kivells.com | 01392 252262



Farms For Sale

KIVELLS

www.kivells.com

West Burrow Farm Bratton Clovelly, Okehampton

A quietly set rural small holding offering huge potential.

- Grade II* Listed thatched farmhouse in need of modernisation.
- 3 beds, 2 receptions.
- Two adjoining traditional barns.
- Land and woodland
- EPC: Exempt as a listed property

Guide Price: £645,000

Holsworthy Farms & Land Department
farms@kivells.com | 01409 259547



Farms For Sale

KIVELLS

www.kivells.com

Fern Hill Farm Mount, Bodmin

- Farm with significant development potential
- Range of agricultural and equestrian buildings
- 60.29 acres of land including productive pasture
- Two bedroom lodge
- Planning for farm dwelling and residential caravan
- Located in a super rural location with far reaching valley views
- Freehold with vacant possession upon completion

Guide Price: £1,000,000

Liskeard Farms & Land Department
mark.bunt@kivells.com | 01579 345543



Development Site **For Sale**

KIVELLS

www.kivells.com

Development Site at Lower Newton Farm Zeal Monachorum, CREDITON, Devon

- Valuable residential development opportunity
- Range of agricultural buildings with planning permission for demolition and creation of three new build, detached four and three bedroom dwellings
- Potential under extension of Permitted Development Rights for retention and conversion of the existing buildings (Clarkson's Law – Maximum 10 dwellings), subject to planning
- Additional land available

Guide Price: £450,000

Exeter Farms & Land Department
simon.alford@kivells.com | 01392 252262



Farms For Auction

KIVELLS

www.kivells.com

Barton Moor Meshaw, South Molton, Devon

- For sale by public auction on Wednesday 25th March, 7.00pm at Lifton Strawberry Field, Lifton, Devon PL16 0DH
- Three bedroom detached bungalow (AOC)
- Range of modern farm buildings with Class Q Permission for five dwellings
- Desirable and accessible location
- Freehold with vacant possession available
- In all about 4.22 acres
- EPC: 23 Band F

Auction Guide Price: £495,000

Exeter Farms & Land Department
ben.hancock@kivells.com | 01392 252262



Land For Sale

KIVELLS

www.kivells.com

Land At Trevillies

St. Keyne, Liskeard | Guide Price £375,000 - £400,000



Approximately 45.64 acres of productive arable/pasture land and amenity woodland with mains water connected. Freehold with vacant possession upon completion.
Liskeard Farms & Land Department
mark.bunt@kivells.com | 01579 345543

Land at Stoke Canon

Exeter, Devon | Offers in Excess of £375,000



A highly productive run of level arable and pastureland with livestock handling pens extending to just under 46 acres.
Exeter Farms & Land Department
simon.alford@kivells.com | 01392 252262

Land forming Part Oldsbrim (Lot 1)

Poundsgate, Newton Abbot | Guide Price £150,000



Approximately 26.19 acres incorporating a block of well presented permanent grassland together with areas of rough grazing.
Exeter Farms & Land Department
ian.caunter@kivells.com | 01392 252262

Land forming Part Oldsbrim (Lot 2)

Poundsgate, Newton Abbot | Guide Price £75,000



Approximately 12.62 acres incorporating three immaculate field parcels down to permanent pasture. A single access point is available from the north.
Exeter Farms & Land Department
ian.caunter@kivells.com | 01392 252262

Land forming Part Oldsbrim (As a whole)

Poundsgate, Newton Abbot | Guide Price £225,000



Approximately 38.81 acres in two separate blocks of preserved permanent grassland.
Exeter Farms & Land Department
ian.caunter@kivells.com | 01392 252262

Land at Four Beeches Farm

Sourton, Okehampton | Guide Price £224,000



Approximately 26.25 acres of productive pasture land with easy access to the A386 and lovely rural views over Dartmoor. Suitable for amenity, equestrian and traditional farming.
Exeter Farms & Land Department
exeter@kivells.com | 01392 252262

Land For Sale

KIVELLS

www.kivells.com

Land at Criftoe Farm

Tregonetha | Guide Price £675,000 - £700,000



Approximately 64.98 acres of quality cropping land and amenity woodland and a useful modern farm building (with potential for alternative uses, subject to planning).

Liskeard Farms & Land Department
mark.bunt@kivells.com | 01579 345543

Land Off Yorke Road

Dartmouth | Guide Price £195,000

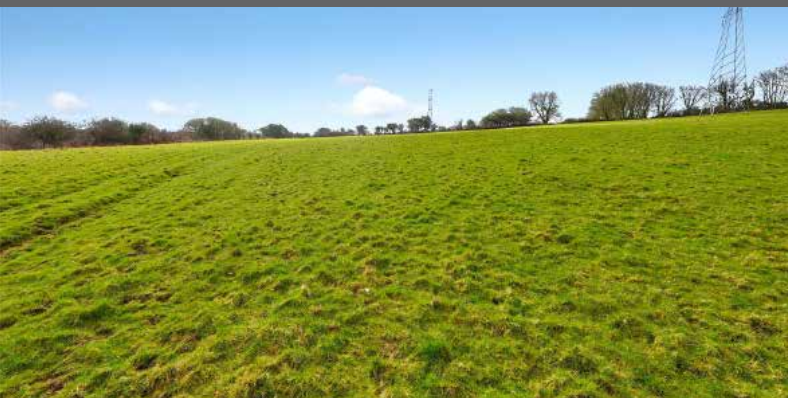


Approximately 12.26 acres in two separate field parcels both down to permanent grassland, previously grazed with livestock.

Exeter Farms & Land Department
exeter@kivells.com | 01392 252262

Land at Polskeys Farm

Roche, St. Austell | Guide Price £495,000



Approximately 59.18 acres of pasture and conservation land accessible off a quiet parish road with far reaching views, mains water connected, a useful livestock building and yard.

Liskeard Farms & Land Department
mark.bunt@kivells.com | 01579 345543

Land at Huxhill

Weare Giffard, Bideford | Guide Price £550,000



A productive run of good quality arable and pasture land in a favoured location extending to approximately 49.38 acres with two direct road access points.

Exeter Farms & Land Department
ben.hancock@kivells.com | 07760 887581

Land at Alsery Bradworthy, Holsworthy

GRASS KEEP FOR SALE BY INFORMAL TENDER

- Approximately 77.15 acres
- The land is all down to permanent pasture
- No attention given
- Water present
- Access via private lane off the parish road as illustrated in brown on the attached land plan
- Approximately 29.21 acres of newly seeded GS4 leys
- Available from 10th April 2026 to 30th September with cattle, and onto 31st October 2026 with sheep
- Tenders to be submitted by 12 noon on Thursday 2nd April

Holsworthy Farms & Land Department
toby.theobald@kivells.com | 01409 253275



Land at Waspley Farm Tiverton

GRASS KEEP FOR SALE BY INFORMAL TENDER

- 169.90 acres to graze or cut, offered as a whole
- Good access to fields
- To be grazed by sheep only, no cattle permitted on the land
- Water is available in most field parcels
- A section of the main shed (11.80m x 6.33m) which can be used for storage or livestock handling
- Fences are present around the boundaries and in reasonable condition
- Access is also permitted down the driveway but only to the first corner and no further down the drive
- No sheep are to be run down the driveway
- It should be noted that deer currently pass through the land
- Tenders to be submitted by 12 noon Wednesday 25th March

Exeter Farms & Land Department
josh.tilley@kivells.com | 07919 537457



Land at Tresmarrow Launceston

LAND TO LET BY INFORMAL TENDER

- Approximately 17.78 acres (7.19 hectares) identified by reference to the plan of land included with the Tender Particulars
- Contained in two enclosures of permanent pasture, with access off a parish road and a farm track
- Serviced by mains water
- Recently been used for cattle grazing purposes
- Tenders to be submitted no later than 5pm on Tuesday 31st March

Liskeard Farms & Land Department
mark.bunt@kivells.com | 01579 345543



Land for Auction

Wednesday 25th March 7.00pm

Venue: Lifton Strawberry Fields, Lifton, Devon PL16

KIVELLS

www.kivells.com

Land at Crylla Farm

Common Moor, Liskeard | Auction Guide Price £275,000 - £285,000
For sale by public auction - Wednesday 25th March



Approximately 30.81 acres of gently sloping pasture land situated overlooking Siblyback Lake, enjoying extensive views and benefiting from a natural water supply.

Liskeard Farms & Land Agency
mark.bunt@kivells.com | 01579 345543

Land off New Road

Liskeard | Auction Guide Price £15,000 - £20,000
For sale by public auction - Wednesday 25th March



Approximately 1.63 acres of gently sloping amenity land situated close to New Road, on the periphery of the town of Liskeard and accessible off a main road, leading to a parish road.

Liskeard Farms & Land Agency
mark.bunt@kivells.com | 01579 345543

Previous Auction Results

Wednesday 18th February, 7.00pm

Land at Coombe

St. Breward, Bodmin | Auction Guide Price £50,000 - £55,000
SOLD: £62,000



Approximately 4.15 acres of pasture and woodland coppice accessible off a quiet parish road with a useful farm building.

Liskeard Farms & Land Agency
mark.bunt@kivells.com | 01579 345543

Collecotts Field

Jacobstowe, Okehampton | Auction Guide Price £25,000 - £30,000
SOLD: £44,000



An attractive level paddock of approximately 2.19 acres with a small timber and corrugated sheet building

Holworthy Farms & Land Agency
Farms@kivells.com | 01409 259547

Previous Auction Results

Wednesday 18th February, 7.00pm

KIVELLS

www.kivells.com

Land at Lower Metherell

Callington | Auction Guide Price £75,000
SOLD: £127,000



Just under 3½ acres of gently sloping pasture with a small range of buildings suitable for equestrian purposes.

Holworthy Farms & Land Agency
Farms@kivells.com | 01409 259547

Land at Pipswell Cross

Morwenstow, Bude | Auction Guide Price £275,000
SOLD: £270,000



Just under 35 acres of productive pasture and arable ground with road frontage and access and rar reaching views.

Holworthy Farms & Land Agency
Farms@kivells.com | 01409 259547

Land at Little Ladford (Lot 1)

Shebbear, Beaworthy | Auction Guide Price £100,000 - £150,000
SOLD: £170,000



Just over 7¾ acres of gently sloping pasture land with a useful timber agricultural building and good access.

Holworthy Farms & Land Agency
Farms@kivells.com | 01409 259547

Land at Little Ladford (Lot 2)

Shebbear, Beaworthy | Auction Guide Price £100,000
SOLD: £154,000



About 12¼ acres of gently sloping pasture land with road frontage and good access.

Holworthy Farms & Land Agency
Farms@kivells.com | 01409 259547

Land at Little Ladford (Lot 3)

Shebbear, Beaworthy | Auction Guide Price £100,000
SOLD: £124,000



Some 10¼ acres of gently sloping pasture land with road frontage and good access.

Holworthy Farms & Land Agency
Farms@kivells.com | 01409 259547

Land at Lake Farm

Trewidland, Liskeard | Auction Guide Price £40,000 - £50,000
SOLD: £54,000



A delightful parcel of mature woodland in an idyllic setting extending to approximately 2.46 acres.

Liskeard Farms & Land Agency
mark.bunt@kivells.com | 01579 345543

Farms Sale Agreed

KIVELLS

www.kivells.com

Keymelford Farm Buildings & Land Keymelford, Colebrook, Crediton, Devon



Lot 1 - Agricultural buildings and yard area with land surrounding extending to 0.41 acres.
Guide Price: £150,000

Lot 2 - Agricultural building with concrete pad and land surrounding extending to 0.41 acres.
Guide Price: £135,000

Lot 3 - A small grassland area extending to approximately 0.14 acres. **Guide Price: £25,000**

Exeter Farms & Land Agency
exeter@kivells.com | 01392 252262

Tor Court Farm Torbryan, Newton Abbot



- Four bedroom, Grade II Listed farmhouse
- Stone barns and a modern agricultural building with potential for alternative uses (stp)
- A truly hidden gem located in a peaceful yet accessible location
- Stunning, well-maintained pasture, orchards and woodland
- In all approximately 67.43 acres (27.28 hectares)

Guide Price: £1,210,000

Exeter Farms & Land Department
ian.caunter@kivells.com | 01392 252262

Farms Sale Agreed

KIVELLS

www.kivells.com

Sandenbury
Tregadillett, Launceston



- Smallholding in a lovely rural, yet accessible location
- Three bedroom bungalow (AOC) in need of modernising
- Range of pole barns
- Just over 40 acres of pasture land including some woodland
- A fantastic blank canvas
- EPC: D

Guide Price: £650,000

Holworthy Farms & Land Department
farms@kivells.com | 01409 259547

Higher Norley Farm
Northlew, Okehampton



- Just over 93 acres of productive pasture land
- A useful range of farm buildings including 96 cubicles, loose housing, fodder store and workshop
- Wonderful far reaching views to Dartmoor
- For sale by Private Treaty

Guide Price: £1,100,000

Holworthy Farms & Land Department
farms@kivells.com | 01409 259547

Farms Sale Agreed

KIVELLS

www.kivells.com

Tregaminion Manor Farm Morvah, Pendeen, Penzance



- Idyllic coastal setting
- Ring fenced farm in an Area of Outstanding Natural Beauty
- Multiple dwellings for income generation or multi-generational living
- Period farmhouse and two cottages
- Range of modern and traditional farm buildings
- Development opportunities with some planning consent in place
- In all some 118 acres
- EPC C, G & G.

Guide Price: £2,500,000

Holsworthy Farms & Land Department
farms@kivells.com | 01409 259547

Trelissick Farm Sithney, Helston



In a beautiful sheltered setting, an 85 acre stock farm. For sale as a whole or in the following lots.

LOT 1: Farmhouse, range of modern livestock and storage buildings, traditional stone barns (some with planning for residential development), set in just over 28 acres of land. EPC: E. **Guide Price: £1,300,000**

LOT 2: A super run of gently sloping pasture land extending to some 43½ acres. **Guide Price: £375,000**

LOT 3: Just over 14 acres and a former waterworks building with planning in principal for a dwelling. **Guide Price: £290,000**

Holsworthy Farms & Land Department
farms@kivells.com | 01409 259547

Farms Sale Agreed

KIVELLS

www.kivells.com

Sensham Farm Marhamchurch, Bude



KIVELLS
www.kivells.com
Kivells. The sign that sells!
SALE AGREED

- Substantial modern farmhouse and separate first floor flat, both in need of modernisation
- Range of adaptable farm buildings with stabling
- Set in some 57 acres
- Not far from the North Cornish coast
- EPCs: D and F

Guide Price: £1,600,000

Holworthy Farms & Land Department
farms@kivells.com | 01409 259547

Pinelands Farm Highampton, Beaworthy



KIVELLS
www.kivells.com
Kivells. The sign that sells!
SALE AGREED

- Charming lifestyle farm with a three bedroom, newly renovated and extended bungalow
- Superb range of traditional and modern outbuildings
- Productive pasture with pockets of woodland extending to just over 56 acres
- Secluded yet convenient location
- EPC: D

Guide Price: £845,000

Holworthy Farms & Land Department
farms@kivells.com | 01409 259547

Land Sale Agreed

KIVELLS

www.kivells.com

Land off Blackacre Lane

St Columb | Guide Price £150,000 - £155,000



Approx 12.87 acres comprising a single enclosure of gently sloping land currently in a temporary ley, although in recent years has been used for arable and vegetable growing purposes.
Liskeard Farms & Land Agency
mark.bunt@kivells.com | 01579 345543

Land at Viverdon Down

St. Mellion, Saltash | Guide Price £465,000



Just under 45 acres of productive pasture land in a very accessible location with lovely far reaching views.
Holsworthy Farms & Land Agency
farms@kivells.com | 01409 259547

Land at St. Issey (LOT 1)

Wadebridge | Guide Price £470,000



Extending to a total of 39.74 acres, lot one comprises a productive block of Grade 3 pasture land, in five enclosures.
Exeter Farms & Land Agency
exeter@kivells.com | 01392 252262

Land at St. Issey (LOT 2)

Wadebridge | Guide Price £450,000



A productive block of farmland totalling 38.87 acres, contained within a ring fence of six enclosures.
Exeter Farms & Land Agency
exeter@kivells.com | 01392 252262

Land at Upton Farm (Lot 1)

Delabole | Guide Price £500,000



Approx. 39.59 acres comprising a ring fence block of level or very gently sloping land currently in arable and temporary pastures contained in large, easy working, enclosures.
Liskeard Farms & Land Department
mark.bunt@kivells.com | 01579 345543

Land at Upton Farm (Lot 2)

Delabole | Guide Price £1,105,000



Approx. 88.25 acres comprising a block of level or very gently sloping land currently in arable and temporary pastures, mostly contained in large, easy working, enclosures.
Liskeard Farms & Land Department
mark.bunt@kivells.com | 01579 345543

Land Sale Agreed

KIVELLS

www.kivells.com

Land at Chudleighs Barn Holding

Liskeard | Guide Price £100,000 - £125,000



Approximately 20.19 acres of pasture and amenity land with pretty stream frontage and some woodland included.

Liskeard Farms & Land Department
mark.bunt@kivells.com | 01579 345543

Solar Park & Land at Gammaton Bideford

- Two solar parks with RPI linked, long-term leases
- Substantial income
- Excellent road frontage with good internal access via a well established track network
- 21.55 acres of quality pastureland in addition to the solar
- In all about 109.9 acres combining solar and pastureland

Guide Price: £1,950,000

Exeter Farms & Land Department
ben.hancock@kivells.com | 07760 887581



Tregovenek Bungalow, Attwood Lane, Pensilva, Liskeard, Cornwall PL14 5QU

Kivells have been instructed to market Tregovenek, a detached three/four bedroom bungalow in a quiet rural location, close to the village of Bolventor, with good size outside space. The bungalow is subject to an Agricultural Occupancy Condition.

Enquiries to W M Bunt BSc MRICS FAAV, Kivells, 7-8 Bay Tree Hill, Liskeard,
Cornwall PL14 4BE

Tel: 01579 345543 or 07879 640970. Email: mark.bunt@kivells.com.