



# EXETER LIVESTOCK CENTRE

# MARKET REPORT

# MARCH 2026

**Monday 30<sup>th</sup> March – Prime Stock Market**



**Monday 30<sup>th</sup> March**

**30 PRIME CATTLE AND CULL COWS – 10:45 AM**

*Auctioneer: Simon Alford – 07789 980203*

**Prime Cattle to £2617 & 372ppk – Cull Cows to £2226 & 290ppk**

Monday saw prime cattle rise to a top per kilo of 372 pence given for a British Blonde heifer from Adrian and Bradley Bowden of Drewsteignton which at 652kg came back at £2422 with a Limousin heifer off the same farm running to £2210 (608kg x 364ppk). Further prime heifers saw young Herefords sell to £1985 (610kg x 326ppk) and £1950 (592kg x 330ppk) for Keith and Hilary Harvey of Bovey Tracey and Gordon Keep in from Moretonhampstead respectively. Heavyweight steers saw South Devons run to £2617 (778kg x 337ppk) and £2448 (670kg x 366ppk) for Steve Harris of Littlehempston followed by more Herefords from Keith and Hilary Harvey when their best steer drew £2264 (648kg x 350ppk). Also, very young Simmental steers from Kathleen and Lewis Slade of Widecombe in the Moor made £1948 (574kg x 340ppk). Cull cows topped out at £2226 (820kg x 272ppk) given for an Aberdeen Angus from N Berry of Cullompton whilst Devon barreners from Phillip Smith of Luppitt sold to £2003 (692kg x 290ppk). British Blue cows reached £1938 (714kg x 272ppk) for AJ Withers and Sons of Cove and Simmental cows returned £1871 (744kg x 252ppk) for MS & JS Southwood of Black Dog.

***Demand is strong for cull cows and prime cattle for Monday's Primestock Market – either tested or untested. Please phone the market office on 01392 251261 or Robert Armstrong on 07791 484290.***

**4421 SHEEP – 09.30 AM**

*Auctioneer: Russell Steer 07788 318701*

**Prime Lambs to £250 & 523 ppk  
Mature Sheep to £175.50 & 288ppk**

**Prime Hogs to £230 & 438 ppk  
Cull Ewes to £382 & Rams to £290**

**1096 PRIME SPRING LAMBS**

Another pleasing entry of spring lambs met with resistance early in the sale but worked into a trade very similar to that of last week, to give an SQQ that was 9p less at 457ppk, although the overall averages were very similar at 450ppk and £192 per head.

The Easter show bought forward an impressive line up of 20 pairs of lambs across the two classes that were ably judged by Mr Dan Westmore of Chard, who selected the first prize natives, a pair of 50kg Suffolk cross Dorset's from Tom Yandle of Oxton as his Champions, who Dan later went onto purchase at £250 apiece on behalf of Aune Valley Meats, Loddiswell. The first prize continental lambs were also purchased by the same buyers being 43kgs and realised £225 and sale topping 523ppk for Charlotte Radley of Tiverton. Second prize continental lambs were 42kgs from Andrew Hodgson of Silverton and sold at £202 to Roger Heggadon on behalf of JV Richards Ltd, of Perranwell Station whilst the third prize went to Terry & Jean Tall of Modbury and were 44's at £206 selling to Ben Comer on behalf of Pickstock Foods Ltd of Derbyshire. In the native class Tom Yandle also scooped the second prize ticket with 50kg <sup>3</sup>/<sub>4</sub> bred Suffolks that made £216 and Jack Enticott had 43kg Suffolk cross lambs that rose to £202, with both pairs purchased by Stillman's Butchers of Taunton.

Away from the show and Tom Yandle also sold a large pen of 51kg lambs at £210, a fait matched by Ross May and Family of Netherexe with plenty of 46-50 lambs selling either side of £200 as indicated by that weight range averaging £200.23. Michael Down of Payhembury sold a single 45kg lamb well at £210 with David Bourne of North Tawton selling Suffolk's of the same weight at £207 and 43's peaked at £202.50 again for Ross May and Family. Several other smart 42-45kg lambs touching £200 as the best of the 41's made £200 for Tom Yandle and a smart pen of 40kg lambs from Geoff & Liz Hosegood also rang the bell at £200 and 500ppk. 39's reached £191.50 again for Michael Down as a super pair of 38's from George and Andrew Palk of Paighton climbed to £195 (513ppk) and 37's sold to £190 for TK Marsh of Yeovil and £187 for John Barker and family of Wellington.

Full compliment of buyers next Monday, consign with confidence!

**\*\* VAN or Farm Assurance NOW A MUST FOR ALL SPRING LAMB PRODUCERS please with all major firms requiring one or the other. Without it you are severely disadvantaged!\*\***

## 2384 PRIME HOGGS & 29 TOOTHERS

Just over 2400 old season sold to a slightly easier trade all round but still dearer than three weeks ago with an SQQ of 409ppk, all in average of 376ppk and levelling at £187 per head.

Probably 30-40 pens over £200 this week in contrast to last week when there were too many to count. Top money of £230 going again to Martin & Adam Crabb of Luppitt who sold others at £215 twice and £205 whilst Phillip Hopkins of Offwell reached £210, Paul Bowden of Drewsteignton at £209 and Martin Rowe and family of Stockland attained £208. Smart 51/52kg hoggs also totting up nicely with Peace Farm of Whitchurch Canonichorum selling their best 51kg hogg at £210 followed by Martin and Adam Crabb with a penful at £206 and Phil Hopkins at £200. £200 also for the best of the 50kg hoggs with all Tucker Crooke Burnell of North Tawton, Reddaway Ltd of Honeychurch and Rich Berry of Kenn achieving this with Tucker Crooke Burnell also topping the 48's at £195.50 and Henry & Jessica Tucker from the same farm sold 46's at £194 and 422ppk. 45's to £194.50 for the Neale family of Launceston as David Selway of Colyton had 44's at £192.50 and a sale topping 438ppk, Rich Berry with 42's at £180 and Josh Sibley of Beaminster with 41kgs at £178 (434ppk). Lighter hoggs saw 39's reached £166 & £160 for Chris Love of Yeovil and 35's to £147 for John Steer of Ashburton. Several hill breeds in the lighter lambs with Tom Havill selling 32kg Welsh at £119 and the edge was just off the tootherers too with the best at £175.50 for Chris Walters of Launceston.

PRIME LAMBS					
Weight	No.	Top £'s	Top ppk	Av. £'s	Av. ppk
32-39	193	195.00 (+1.00)	514 (+3)	180.53 (-7.45)	475 (-12)
40-45	745	225.00 (+25.00)	523 (+33)	192.48 (+0.34)	453 (-6)
46-52	148	250.00 (+41.00)	500 (+55)	200.23 (+2.41)	420 (+6)
53+	7	198.00 (-12.00)	354 (-40)	198.00 (-8.14)	354 (-27)
PRIME HOGGS					
25-31	23	119.00 (-)	372 (-25)	116.78 (+0.78)	365 (-23)
32-39	87	166.00 (-4.00)	426 (-21)	145.28 (-6.63)	393 (-13)
40-45	616	194.50 (-1.50)	438 (-5)	178.34 (-6.14)	411 (-16)
46-52	894	210.00 (-10.00)	422 (-9)	190.77 (+7.30)	392 (-6)
53+	764	230.00 (-10)	383 (-17)	197.75 (-5.40)	339 (-17)
<b>MATURE SHEEP</b>	29	175.50 (-16.50)	288 (-58)	168.13 (-9.17)	266 (-55)
		Top		Average	
<b>EWES</b>	857	£382 (+12)		£191.42 (+29.74)	
<b>RAMS</b>	45	£290 (+10)		£184.40 (+12.54)	

## 857 CULL EWES & 45 RAMS

My word, what a trade!! Not too much riff raff but an overall average of £191.42 on the ewes was just colossal and possibly the dearest we've ever seen! Best Texel ewes to £382 & £362 for the Quick family of Zeal Monachorum who also had Charollais at £360, both Rebecca Jordan of Chagford and Jim & Nicky Hartwright of Worcester with Texels to £372 and Ben and Amelia Watts of Ashburton sold two lots of Charollais at £360 as well as the top price Suffolk cross Mules at a phenomenal £310. Lots of business done between £290 and £340 including the best Dorset's at £295 for Goerge and Andrew Palk of Paignton and Texel x Mules at £288 for Tom Yandle of Oxton. The general run of big heavy Suffolk, Texel and Dorset crosses in large pens trading £220 to £270 and the best of the Mules up £20-£30 on the week with the best touching £190. Hill ewes fewer in number today but Brian Vallance and family of Bickington sold a Scotch tup well at £175 and the few half to ¾ meat hill ewes here were usually £100 to £130, Cheviots more like £160 to £190. Tups were a mixy show and big trade with Sue Cleave and family of Moretonhamsstead reaching £290 & £270, Kevin & Becky Matthews of Launceston at £278, RJ Northcott of Callington at £275 and both the Vanstone family of Bratton Clovelly and C & D Ford of Chulmleigh sold tups at £270.

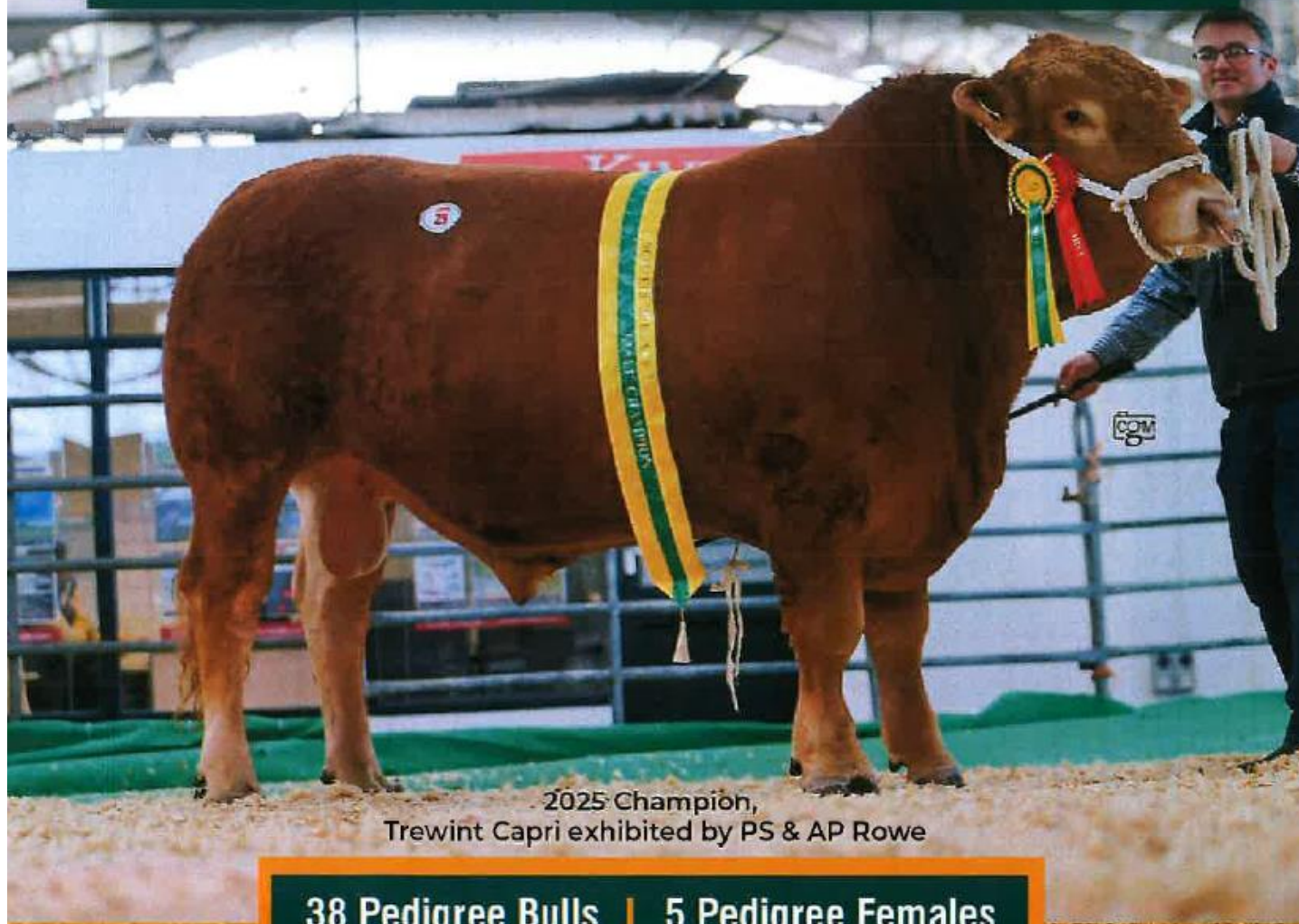


# SOUTH DEVON HERD BOOK SOCIETY'S SPRING SHOW & SALE 2026

EXETER LIVESTOCK CENTRE, MATFORD, EXETER, EX2 8FD

Sale by Auction under NBA Terms & Conditions of Sale

**WEDNESDAY 8<sup>TH</sup> APRIL 2026**  
JUDGING FROM 9.00AM | SALE AT 12 NOON



2025 Champion,  
Trewint Capri exhibited by PS & AP Rowe

**38 Pedigree Bulls | 5 Pedigree Females**

All TB tested and either CHeCs accredited free of BVD or individually tested negative for BVD antigen, and all vaccinated for BVD at least one month prior to Sale date.

SINGLE STEP BREEDPLAN EBVs incorporating genomics



# CELEBRATING 35 YEARS PERFORMANCE RECORDED DORSETS



"RAM OF THE YEAR" and "SELECT SALE"  
Rams and Ewes

10th April 2026, Kivells, Exeter

All stock MV accredited, performance recorded, and pedigree registered

 [info@centurionbreeders.com](mailto:info@centurionbreeders.com)

For more information about CENTURION scan here:  
Chairman: Keith May (Newtoncoombe)  
Secretary: Emily Smith (Prospect)



**Penbode**  
Farm Vets



- Competitively priced farm medicines
- Dairy and beef fertility clubs
- 24/7/365 veterinary cover
- Livestock fertility testing and advice
- VetTech services
- In-house labs and lambing bays

[www.penbodevets.co.uk](http://www.penbodevets.co.uk)

Holsworthy | Bradworthy | Stratton | Launceston | Camelford

## FORTHCOMING SALES

### **MONDAY 30<sup>TH</sup> MARCH – EXETER LIVESTOCK CENTRE**

*Weekly Prime Stock Market to include Easter Show & Sale of Spring Lambs*

### **FRIDAY 3<sup>RD</sup> APRIL – EXETER LIVESTOCK CENTRE**

*GOOD FRIDAY – NO MARKET*

### **MONDAY 6<sup>TH</sup> APRIL – EXETER LIVESTOCK CENTRE**

*EASTER MONDAY - Weekly Prime Stock Market*

### **WEDNESDAY 8<sup>TH</sup> APRIL – EXETER LIVESTOCK CENTRE**

*Spring Show & Sale on behalf of the South Devon Herd Book Society*

### **FRIDAY 10<sup>TH</sup> APRIL – EXETER LIVESTOCK CENTRE**

*Weekly Prime Stock Market to include 3<sup>rd</sup> Spring Judged Sale of Continental and Continental Cross Cattle, Sale of Dairy Cattle including English Gold Top Sale of Jerseys, Show & Sale of Suckled Calves and Stirks, Centurion Sheep Breeders Sale of Dorset Ewes & Rams, Show & Sale of Ewes and Lambs plus Fortnightly Pig Sale*

### **MONDAY 13<sup>TH</sup> APRIL – EXETER LIVESTOCK CENTRE**

*Weekly Prime Stock Market*

### **WEDNESDAY 15<sup>TH</sup> APRIL – EXETER LIVESTOCK CENTRE**

*Devon YFC Show & Sale*

### **FRIDAY 17<sup>TH</sup> APRIL – EXETER LIVESTOCK CENTRE**

*Weekly Prime Stock Market to include Monthly Catalogued Sale of Beed Breeding Stock including Special Sales of Charolais & Salers Bulls & Females, Sale of Pedigree and Purebred Ewes and Lambs and Ewe Hogs.*

### **MONDAY 20<sup>TH</sup> APRIL – EXETER LIVESTOCK CENTRE**

*Weekly Prime Stock Market*

### **FRIDAY 24<sup>TH</sup> APRIL – EXETER LIVESTOCK CENTRE**

*Weekly Store Market to include Monthly Sale of Organic Cattle & Sheep, Sale of Dairy Cattle plus Fortnightly Pig Sale*

### **MONDAY 27<sup>TH</sup> APRIL – EXETER LIVESTOCK CENTRE**

*Weekly Prime Stock Market*

### **TUESDAY 28<sup>TH</sup> APRIL – EXETER LIVESTOCK CENTRE**

*Monthly Sale of TB Restricted (Orange Market) Cattle*

### **FRIDAY 1<sup>ST</sup> MAY – EXETER LIVESTOCK CENTRE**

*Weekly Store Market to include Catalogued Sale of Hogg Couples*

### **MONDAY 4<sup>TH</sup> MAY – EXETER LIVESTOCK CENTRE**

*Weekly Prime Stock Market*

### **TUESDAY 5<sup>TH</sup> MAY – EXETER LIVESTOCK CENTRE**

*Dorset Horn & Poll Dorset May Fair Show*

### **WEDNESDAY 6<sup>TH</sup> MAY – EXETER LIVESTOCK CENTRE**

*Monthly Sale of TB Restricted (Orange Market) Cattle*

# Farms | Land | Smallholdings

## Thinking of selling?

Kivells are at the heart of the farming community throughout the westcountry and beyond and have been selling farms, land and smallholdings since 1885.



### Our tailor made service includes;

- ✓ Personal and confidential service
- ✓ Experienced team of Farm Agents
- ✓ Tailor made marketing plans across a variety of platforms
- ✓ Network of contacts within the farming community
- ✓ Added value with advice on Tax, Planning and Stewardship



In-house  
bespoke  
brochures



Over 40,000  
followers on  
Social Media



Millions of  
page views on  
kivells.com,  
Rightmove  
& Zoopa



Coverage in  
national and  
regional  
publications

With 140 years of industry experience, we pride ourselves in providing friendly and professional advice on all aspects of selling your farm, land or smallholding.

## Puddaven Farm North Bovey, Newton Abbot

- Immaculate Farmhouse
- Stunning two bedroom Holiday Cottage
- Outbuildings and stabling
- Outdoor equine menage
- Well-maintained pasture land
- Versatile lifestyle property
- Far reaching views
- In all totalling approximately 32.35 acres (13.09 hectares)
- EPC: E & D

**Guide Price: £1,800,000**

Exeter Farms & Land Department  
[exeter@kivells.com](mailto:exeter@kivells.com) | 01392 252262



## Oxenpark Farm Hersham, Bude

- Wonderful setting with far reaching views over Bude Bay and the North Cornish coast.
- Three bedroom farmhouse and four further cottages
- Superb range of outbuildings suitable for a variety of uses
- In all about 16.18 acres with further land available by separate negotiation.
- Freehold
- Available as a whole or in three lots
- EPC: D, C, C, C & D

**Lot 1:** Three bedroom farmhouse, two holiday cottages, one further cottage and a lodge. Range of adaptable farm buildings, income generating wind turbine and just over 16 acres.

**Guide Price: £1,395,000**

**Lot 2:** A useful block of 45½ acres of pasture and arable land including 3 acres of mature woodland.

**Guide Price: £515,000**

**Lot 3:** A single gently sloping pasture field extending to 6.34 acres.

**Guide Price: £85,000**

**Guide Price (as a whole): £1,995,000**

Holsworthy Farms & Land Department  
[farms@kivells.com](mailto:farms@kivells.com) | 01409 259547



## Trehere Farm Trewidland, Liskeard

- Substantial four bedroom (all en-suite) modern house enjoying extensive country views
- Range of buildings currently comprising a livery yard with potential for alternative uses
- Approximately 36.51 acres of pasture, amenity woodland and a sand school
- Wonderful rural location yet conveniently situated close to several villages and the town of Liskeard
- EPC: D

**Guide Price: £995,000**

Liskeard Farms & Land Department  
[mark.bunt@kivells.com](mailto:mark.bunt@kivells.com) | 01579 345543



# Farms For Sale

# KIVELLS

[www.kivells.com](http://www.kivells.com)

## Barton Moor Meshaw, South Molton, Devon

- Three bedroom detached bungalow (AOC)
- Range of modern farm buildings with Class Q Permission for five dwellings
- Desirable and accessible location
- Freehold with vacant possession available
- In all about 4.22 acres
- EPC: 23 Band F

**Guide Price: £495,000**

Exeter Farms & Land Department  
[ben.hancock@kivells.com](mailto:ben.hancock@kivells.com) | 01392 252262



# Farms For Sale

# KIVELLS

[www.kivells.com](http://www.kivells.com)

## Landabethick Blisland, Bodmin

- Charming, 6 bedroom detached farmhouse
- Excellent range of traditional farm buildings suitable for a variety of uses
- In all about 77 acres comprising a combination of good agricultural land and woodland
- Parking, garaging and workshop space
- Unrivalled, private position at the end of a private drive
- Freehold with vacant possession available
- EPC: D

**Guide Price: £1,350,000**

Exeter Farms & Land Department  
[ben.hancock@kivells.com](mailto:ben.hancock@kivells.com) | 01392 252262



## Great Huish Farm Tedburn St. Mary Exeter

- Grade II Listed detached four bedroom house with three reception rooms
- Two further cottages providing income generation or multi-generation living
- Ring Fenced Farm
- Range of modern and traditional farm buildings
- Development opportunities with some planning consent in place
- Easy access to the A30 & M5
- In all about 8.92 acres of agricultural land with further land available by separate negotiation.
- EPC: C

**Guide Price: £1,395,000**

Exeter Farms & Land Department  
[exeter@kivells.com](mailto:exeter@kivells.com) | 01392 252262



# Farms For Sale

# KIVELLS

[www.kivells.com](http://www.kivells.com)

## West Burrow Farm Bratton Clovelly, Okehampton

A quietly set rural small holding offering huge potential.

- Grade II\* Listed thatched farmhouse in need of modernisation.
- 3 beds, 2 receptions.
- Two adjoining traditional barns.
- Land and woodland
- EPC: Exempt as a listed property

**Guide Price: £645,000**

Holsworthy Farms & Land Department  
[farms@kivells.com](mailto:farms@kivells.com) | 01409 259547



# Farms For Sale

# KIVELLS

[www.kivells.com](http://www.kivells.com)

## Fern Hill Farm Mount, Bodmin

- Farm with significant development potential
- Range of agricultural and equestrian buildings
- 60.29 acres of land including productive pasture
- Two bedroom lodge
- Planning for farm dwelling and residential caravan
- Located in a super rural location with far reaching valley views
- Freehold with vacant possession upon completion

**Guide Price: £1,000,000**

Liskeard Farms & Land Department  
[mark.bunt@kivells.com](mailto:mark.bunt@kivells.com) | 01579 345543



# Development Site **For Sale**

# KIVELLS

[www.kivells.com](http://www.kivells.com)

## Development Site at Lower Newton Farm Zeal Monachorum, CREDITON, Devon

- Valuable residential development opportunity
- Range of agricultural buildings with planning permission for demolition and creation of three new build, detached four and three bedroom dwellings
- Potential under extension of Permitted Development Rights for retention and conversion of the existing buildings (Clarkson's Law – Maximum 10 dwellings), subject to planning
- Additional land available

**Guide Price: £450,000**

Exeter Farms & Land Department  
[simon.alford@kivells.com](mailto:simon.alford@kivells.com) | 01392 252262



# Farms For Auction

# KIVELLS

[www.kivells.com](http://www.kivells.com)

## Trefuge Bungalow Coads Green, Launceston, Cornwall

- For sale by Public Auction on Wednesday 22nd April, 7.00pm at Lifton Strawberry Fields, Lifton, Devon PL16 0DH
- Three bedroom bungalow of non traditional construction and in need of updating
- Set in just over 5 acres of gently sloping pasture
- Useful Nissen hut storage shed
- Lovely quiet rural setting with superb moorland views
- EPC = E (46)

**Auction Guide Price: £250,000**

Holsworthy Farms & Land Department  
[farms@kivells.com](mailto:farms@kivells.com) | 01409 259547



# Land For Sale

# KIVELLS

[www.kivells.com](http://www.kivells.com)

## Land At Trevillies

St. Keyne, Liskeard | Guide Price £375,000 - £400,000



Approximately 45.64 acres of productive arable/pasture land and amenity woodland with mains water connected. Freehold with vacant possession upon completion.  
Liskeard Farms & Land Department  
[mark.bunt@kivells.com](mailto:mark.bunt@kivells.com) | 01579 345543

## Land at Stoke Canon

Exeter, Devon | Offers in Excess of £375,000



A highly productive run of level arable and pastureland with livestock handling pens extending to just under 46 acres.  
Exeter Farms & Land Department  
[simon.alford@kivells.com](mailto:simon.alford@kivells.com) | 01392 252262

## Land forming Part Oldsbrim (Lot 1)

Poundsgate, Newton Abbot | Guide Price £150,000



Approximately 26.19 acres incorporating a block of well presented permanent grassland together with areas of rough grazing.  
Exeter Farms & Land Department  
[ian.caunter@kivells.com](mailto:ian.caunter@kivells.com) | 01392 252262

## Land forming Part Oldsbrim (Lot 2)

Poundsgate, Newton Abbot | Guide Price £75,000



Approximately 12.62 acres incorporating three immaculate field parcels down to permanent pasture. A single access point is available from the north.  
Exeter Farms & Land Department  
[ian.caunter@kivells.com](mailto:ian.caunter@kivells.com) | 01392 252262

## Land forming Part Oldsbrim (As a whole)

Poundsgate, Newton Abbot | Guide Price £225,000



Approximately 38.81 acres in two separate blocks of preserved permanent grassland.  
Exeter Farms & Land Department  
[ian.caunter@kivells.com](mailto:ian.caunter@kivells.com) | 01392 252262

## Land at Four Beeches Farm

Sourton, Okehampton | Guide Price £224,000



Approximately 26.25 acres of productive pasture land with easy access to the A386 and lovely rural views over Dartmoor. Suitable for amenity, equestrian and traditional farming.  
Exeter Farms & Land Department  
[exeter@kivells.com](mailto:exeter@kivells.com) | 01392 252262

# Land For Sale

# KIVELLS

[www.kivells.com](http://www.kivells.com)

## Land at Criftoe Farm

Tregonetha | Guide Price £675,000 - £700,000



Approximately 64.98 acres of quality cropping land and amenity woodland and a useful modern farm building (with potential for alternative uses, subject to planning).

Liskeard Farms & Land Department  
[mark.bunt@kivells.com](mailto:mark.bunt@kivells.com) | 01579 345543

## Land Off Yorke Road

Dartmouth | Guide Price £195,000



Approximately 12.26 acres in two separate field parcels both down to permanent grassland, previously grazed with livestock.

Exeter Farms & Land Department  
[exeter@kivells.com](mailto:exeter@kivells.com) | 01392 252262

## Land at Polskeys Farm

Roche, St. Austell | Guide Price £495,000



Approximately 59.18 acres of pasture and conservation land accessible off a quiet parish road with far reaching views, mains water connected, a useful livestock building and yard.

Liskeard Farms & Land Department  
[mark.bunt@kivells.com](mailto:mark.bunt@kivells.com) | 01579 345543

## Land at Huxhill

Weare Giffard, Bideford | Guide Price £550,000



A productive run of good quality arable and pasture land in a favoured location extending to approximately 49.38 acres with two direct road access points.

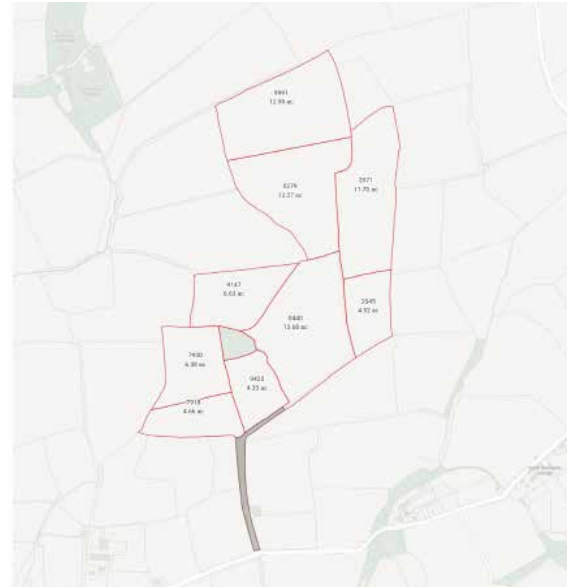
Exeter Farms & Land Department  
[ben.hancock@kivells.com](mailto:ben.hancock@kivells.com) | 07760 887581

## Land at Alsery Bradworthy, Holsworthy

### GRASS KEEP FOR SALE BY INFORMAL TENDER

- Approximately 77.15 acres
- The land is all down to permanent pasture
- No attention given
- Water present
- Access via private lane off the parish road as illustrated in brown on the attached land plan
- Approximately 29.21 acres of newly seeded GS4 leys
- Available from 10th April 2026 to 30th September with cattle, and onto 31st October 2026 with sheep
- Tenders to be submitted by 12 noon on Thursday 2nd April

Holsworthy Farms & Land Department  
toby.theobald@kivells.com | 01409 253275



## Land at Tutchenor Farm Patchacott, Beaworthy

### GRASS KEEP FOR SALE BY INFORMAL TENDER

- Approximately 86.7 acres available in three lots
- To cut and/or graze with sheep and cattle
- 1st May 2026 to 30th September with cattle, and on to 31st October 2026 with sheep
- Lot 1 - 19.69 acres
- Lot 2 - 28.52 acres
- Lot 3 - 38.49 acres

Holsworthy Farms & Land Department  
toby.theobald@kivells.com | 01409 253275



## Land at Tresmarrow Launceston

### LAND TO LET BY INFORMAL TENDER

- Approximately 17.78 acres (7.19 hectares) identified by reference to the plan of land included with the Tender Particulars
- Contained in two enclosures of permanent pasture, with access off a parish road and a farm track
- Serviced by mains water
- Recently been used for cattle grazing purposes
- Tenders to be submitted no later than 5pm on Tuesday 31st March

Liskeard Farms & Land Department  
mark.bunt@kivells.com | 01579 345543



# Land for Auction

## Wednesday 22nd April 7.00pm

Venue: Lifton Strawberry Fields, Lifton, Devon PL16 0DE

# KIVELLS

[www.kivells.com](http://www.kivells.com)

### Land at Higher Reedy Mill

Trewidland, Liskeard | Auction Guide Price £45,000 - £50,000  
For sale by public auction - Wednesday 22nd April



Approximately 4.39 acres of sloping pasture land accessible off a quiet parish road. The land is likely to be of interest to those with agricultural, small holding, equestrian or general amenity interest.

Liskeard Farms & Land Agency  
[mark.bunt@kivells.com](mailto:mark.bunt@kivells.com) | 01579 345543

### Land at Sladelands Farm

Botus Fleming, Saltash | Auction Guide Price £130,000 - £140,000  
For sale by public auction - Wednesday 22nd April



Approximately 9.95 acres of pasture, amenity and woodland and a range of buildings currently providing a stable yard. The land is accessible off a quiet parish road, close to the village of Botus Fleming and has mains electricity and mains water available.

Liskeard Farms & Land Agency  
[mark.bunt@kivells.com](mailto:mark.bunt@kivells.com) | 01579 345543

### Land lying north of The Pastures

Bratton Clovelly | Auction Guide Price £50,000 - £75,000  
For sale by public auction - Wednesday 22nd April



Just over 2 acres of pasture land with lovely far reaching views, great for livestock grazing or as a pony paddock. Some long term potential, subject to gaining the necessary planning consents.

Holsworthy Farms & Land Agency  
[Farms@kivells.com](mailto:Farms@kivells.com) | 01409 259547

### Land & Buildings at Klymiarven

Tintagel | Auction Guide Price £175,000 - £195,000  
For sale by public auction - Wednesday 22nd April



Approximately 13.25 acres of level pasture land with a small range of buildings and yard. The land is situated in a great location in the village and not far from the stunning North Cornish coast.

Holsworthy Farms & Land Agency  
[Farms@kivells.com](mailto:Farms@kivells.com) | 01409 259547

### Land at Quarry Hill

Petrockstow, Okehampton | Auction Guide Price £125,000 - £150,000  
For sale by public auction - Wednesday 22nd April



A useful block of sheltered pasture land, gently sloping and level, extending to some 14.65 acres in all with road frontage.

Holsworthy Farms & Land Agency  
[Farms@kivells.com](mailto:Farms@kivells.com) | 01409 259547

### Land & Yard known as Tall Trees

Kit Hill, Callington | Auction Guide Price £25,000  
For sale by public auction - Wednesday 22nd April



A great opportunity to acquire a yard, building and 1 1/4 acres in need of upgrading. Road frontage and good access.

Holsworthy Farms & Land Agency  
[Farms@kivells.com](mailto:Farms@kivells.com) | 01409 259547

# Land for Auction

## Wednesday 22nd April 7.00pm

Venue: Lifton Strawberry Fields, Lifton, Devon PL16 0DE

# KIVELLS

[www.kivells.com](http://www.kivells.com)

### Land at Yonder Park

Ebberley, Torrington | Auction Guide Price £295,000 - £315,000  
For sale by public auction - Wednesday 22nd April



A fantastic block of approximately 31.42 acres of arable land, divided in to four good sized fields and benefiting from good access from the adjoining parish road and far reaching countryside views.

Holsworthy Farms & Land Agency  
[Farms@kivells.com](mailto:Farms@kivells.com) | 01409 259547

### Land at Lower Wringworthy

Morval, Looe | Auction Guide Price £90,000 - £95,000  
For sale by public auction - Wednesday 22nd April



Approximately 10.09 acres comprising two very gently sloping enclosures of permanent pasture accessible off a quiet parish road. There is some stock fencing noting the land has been used for livestock grazing and forage conservation purposes.

Liskeard Farms & Land Agency  
[mark.bunt@kivells.com](mailto:mark.bunt@kivells.com) | 01579 345543

### Land at Kelynack

St. Just, Penzance | Auction Guide Price £130,000  
For sale by public auction - Wednesday 22nd April



An excellent opportunity to purchase a 13.54 acre block of predominantly level agricultural land in a superb position, just inland from the West Cornish coastline.

Holsworthy Farms & Land Agency  
[Farms@kivells.com](mailto:Farms@kivells.com) | 01409 259547

### Land at Aller

Sampford Courtenay, Okehampton | Auction Guide Price £295,000  
For sale by public auction - Wednesday 22nd April



A productive run of pasture land in a desirable and accessible location, in all about 34.64 acres. The land is currently laid to pasture and is divided into three enclosures.

Exeter Farms & Land Agency  
[Exeter@kivells.com](mailto:Exeter@kivells.com) | 01392 252262

# Previous Auction Results

Wednesday 25th March, 7.00pm

# KIVELLS

[www.kivells.com](http://www.kivells.com)

## Land at Crylla Farm

Common Moor, Liskeard | Auction Guide Price £275,000 - £285,000  
SOLD: £310,000



Approximately 30.81 acres of gently sloping pasture land situated overlooking Siblyback Lake, enjoying extensive views and benefiting from a natural water supply.

**Liskeard Farms & Land Agency**  
[mark.bunt@kivells.com](mailto:mark.bunt@kivells.com) | 01579 345543

## Land off New Road

Liskeard | Auction Guide Price £15,000 - £20,000  
SOLD: £27,000



Approximately 1.63 acres of gently sloping amenity land situated close to New Road, on the periphery of the town of Liskeard and accessible off a main road, leading to a parish road.

**Liskeard Farms & Land Agency**  
[mark.bunt@kivells.com](mailto:mark.bunt@kivells.com) | 01579 345543

# Farms Sale Agreed

# KIVELLS

[www.kivells.com](http://www.kivells.com)

## Keymelford Farm Buildings & Land Keymelford, Colebrook, Crediton, Devon



**Lot 1** - Agricultural buildings and yard area with land surrounding extending to 0.41 acres.  
**Guide Price: £150,000**

**Lot 2** - Agricultural building with concrete pad and land surrounding extending to 0.41 acres.  
**Guide Price: £135,000**

**Lot 3** - A small grassland area extending to approximately 0.14 acres. **Guide Price: £25,000**

Exeter Farms & Land Agency  
[exeter@kivells.com](mailto:exeter@kivells.com) | 01392 252262

## Tor Court Farm Torbryan, Newton Abbot



- Four bedroom, Grade II Listed farmhouse
- Stone barns and a modern agricultural building with potential for alternative uses (stp)
- A truly hidden gem located in a peaceful yet accessible location
- Stunning, well-maintained pasture, orchards and woodland
- In all approximately 67.43 acres (27.28 hectares)

**Guide Price: £1,210,000**

Exeter Farms & Land Department  
[ian.caunter@kivells.com](mailto:ian.caunter@kivells.com) | 01392 252262

# Farms Sale Agreed

# KIVELLS

[www.kivells.com](http://www.kivells.com)

**Sandenbury**  
Tregadillett, Launceston



- Smallholding in a lovely rural, yet accessible location
- Three bedroom bungalow (AOC) in need of modernising
- Range of pole barns
- Just over 40 acres of pasture land including some woodland
- A fantastic blank canvas
- EPC: D

**Guide Price: £650,000**

Holworthy Farms & Land Department  
[farms@kivells.com](mailto:farms@kivells.com) | 01409 259547

**Higher Norley Farm**  
Northlew, Okehampton



- Just over 93 acres of productive pasture land
- A useful range of farm buildings including 96 cubicles, loose housing, fodder store and workshop
- Wonderful far reaching views to Dartmoor
- For sale by Private Treaty

**Guide Price: £1,100,000**

Holworthy Farms & Land Department  
[farms@kivells.com](mailto:farms@kivells.com) | 01409 259547

# Farms Sale Agreed

# KIVELLS

www.kivells.com

## Tregaminion Manor Farm Morvah, Pendeen, Penzance



- Idyllic coastal setting
- Ring fenced farm in an Area of Outstanding Natural Beauty
- Multiple dwellings for income generation or multi-generational living
- Period farmhouse and two cottages
- Range of modern and traditional farm buildings
- Development opportunities with some planning consent in place
- In all some 118 acres
- EPC C, G & G.

**Guide Price: £2,500,000**

Holworthy Farms & Land Department  
farms@kivells.com | 01409 259547

## Trelissick Farm Sithney, Helston



In a beautiful sheltered setting, an 85 acre stock farm. For sale as a whole or in the following lots.

**LOT 1:** Farmhouse, range of modern livestock and storage buildings, traditional stone barns (some with planning for residential development), set in just over 28 acres of land. EPC: E. **Guide Price: £1,300,000**

**LOT 2:** A super run of gently sloping pasture land extending to some 43½ acres. **Guide Price: £375,000**

**LOT 3:** Just over 14 acres and a former waterworks building with planning in principal for a dwelling. **Guide Price: £290,000**

Holworthy Farms & Land Department  
farms@kivells.com | 01409 259547

# Farms Sale Agreed

# KIVELLS

[www.kivells.com](http://www.kivells.com)

## Sensham Farm Marhamchurch, Bude



- Substantial modern farmhouse and separate first floor flat, both in need of modernisation
- Range of adaptable farm buildings with stabling
- Set in some 57 acres
- Not far from the North Cornish coast
- EPCs: D and F

**Guide Price: £1,600,000**

Holsworthy Farms & Land Department  
[farms@kivells.com](mailto:farms@kivells.com) | 01409 259547

## Pinelands Farm Highampton, Beaworthy



- Charming lifestyle farm with a three bedroom, newly renovated and extended bungalow
- Superb range of traditional and modern outbuildings
- Productive pasture with pockets of woodland extending to just over 56 acres
- Secluded yet convenient location
- EPC: D

**Guide Price: £845,000**

Holsworthy Farms & Land Department  
[farms@kivells.com](mailto:farms@kivells.com) | 01409 259547

# Land Sale Agreed

# KIVELLS

www.kivells.com

## Land off Blackacre Lane St Columb | Guide Price £150,000 - £155,000



Approx 12.87 acres comprising a single enclosure of gently sloping land currently in a temporary ley, although in recent years has been used for arable and vegetable growing purposes.  
Liskeard Farms & Land Agency  
mark.bunt@kivells.com | 01579 345543

## Land at Viverdon Down St. Mellion, Saltash | Guide Price £465,000



Just under 45 acres of productive pasture land in a very accessible location with lovely far reaching views.  
Holsworthy Farms & Land Agency  
farms@kivells.com | 01409 259547

## Land at St. Issey (LOT 1) Wadebridge | Guide Price £470,000



Extending to a total of 39.74 acres, lot one comprises a productive block of Grade 3 pasture land, in five enclosures.  
Exeter Farms & Land Agency  
exeter@kivells.com | 01392 252262

## Land at St. Issey (LOT 2) Wadebridge | Guide Price £450,000



A productive block of farmland totalling 38.87 acres, contained within a ring fence of six enclosures.  
Exeter Farms & Land Agency  
exeter@kivells.com | 01392 252262

## Land at Upton Farm (Lot 1) Delabole | Guide Price £500,000



Approx. 39.59 acres comprising a ring fence block of level or very gently sloping land currently in arable and temporary pastures contained in large, easy working, enclosures.  
Liskeard Farms & Land Department  
mark.bunt@kivells.com | 01579 345543

## Land at Upton Farm (Lot 2) Delabole | Guide Price £1,105,000



Approx. 88.25 acres comprising a block of level or very gently sloping land currently in arable and temporary pastures, mostly contained in large, easy working, enclosures.  
Liskeard Farms & Land Department  
mark.bunt@kivells.com | 01579 345543

# Land Sale Agreed

# KIVELLS

www.kivells.com

## Land at Chudleighs Barn Holding

Liskeard | Guide Price £100,000 - £125,000



Approximately 20.19 acres of pasture and amenity land with pretty stream frontage and some woodland included.

Liskeard Farms & Land Department  
mark.bunt@kivells.com | 01579 345543

## Solar Park & Land at Gammaton Bideford

- Two solar parks with RPI linked, long-term leases
- Substantial income
- Excellent road frontage with good internal access via a well established track network
- 21.55 acres of quality pastureland in addition to the solar
- In all about 109.9 acres combining solar and pastureland

Guide Price: £1,950,000

Exeter Farms & Land Department  
ben.hancock@kivells.com | 07760 887581



## **Tregovenek Bungalow, Attwood Lane, Pensilva, Liskeard, Cornwall PL14 5QU**

Kivells have been instructed to market Tregovenek, a detached three/four bedroom bungalow in a quiet rural location, close to the village of Bolventor, with good size outside space. The bungalow is subject to an Agricultural Occupancy Condition.

Enquiries to W M Bunt BSc MRICS FAAV, Kivells, 7-8 Bay Tree Hill, Liskeard,  
Cornwall PL14 4BE

Tel: 01579 345543 or 07879 640970. Email: [mark.bunt@kivells.com](mailto:mark.bunt@kivells.com).