

# HOLSWORTHY MARKET REPORT

## Wednesday 17 January 2024

**EVERY WEDNESDAY**

**Gates open 6am**

### SALE TIMES

**09:45 am** - Draft Ewes followed by Finished Lambs

**10:30 am** - Store Lambs

**09.45 am** - Calves followed by Stirks

**11:00 am** - Store Cattle followed by Finished & OTM Cattle

**11:00 am** - Dairy Cattle





## 622 PRIME SHEEP 145 DRAFT EWES AND RAMS

09:45am

Auctioneer: Steve Prouse - 07767 895366

Larger entry again saw the well fleshed hogs selling to a premium throughout. Twenty-one pens realised 280p and over, to a top of 290p for a pen of 42kgs £122 from Messrs Hussell of East Badworthy, Shebbear. Mrs A Turner of Queensland, Marhamchurch realised 285p for a pen of Texel X 46kgs £131. Four other vendors realised 283p. Top on the day was £131 from three vendors.

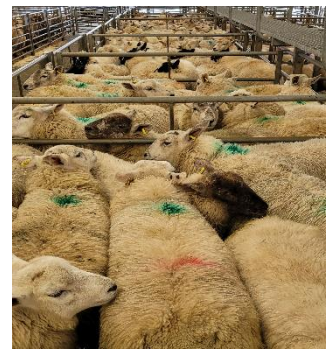
### DRAFT EWES

Similar entry with nearly all plain and half meat ewes on offer. All ewes met a flying trade from start to finish. Top on the day was £128.50 for a Dorset from Barry Lyons of Morwenstow. Suffolk X ewes topped at £121.50 from Mr L Wickett of Bradworthy. Mules to £105 from the Crocombe family of Lugworthy, Germansweek.

### 77 STORE HOGGS

Smaller entry and a strong trade. Top being £94.50 from Chris Reid of Abbotsham, Bideford.

WEIGHT	TOP		AVERAGE	
LAMBS	Per head	P/Kg TLW	Per head	P/Kg TLW
32.1 - 39	96.50	268	92.80	249.5
39.1 - 45.5	127	290	116	272.1
45.6 - 52	131	285	127.60	264.3
52 +	130	236	129.50	235.7
Overall	131	290	120	270.7
Ewes				
Light	106		81	
Heavy	128.50		117	
Rams				




**Entries invited for next week, please contact  
Steve on 07767 895366**

**Rural Professional**  
[www.kivells.com](http://www.kivells.com)

Exeter 01392 252262  
Holsworthy 01409 253275  
Launceston 01566 776886  
Liskeard 01579 345543

Your Kivells Rural Professional Department offer a complete valuation and rural service.



✓ Capital Grants  
✓ Compensation

✓ Renewables Advice  
✓ Sustainable Farming Incentive

✓ Valuations  
✓ Landlord/Tenant

✓ Planning  
✓ Landlord/Tenant



**Penbode**  
Farm Vets Since 1840

Dairy, Beef and Sheep Clubs  
Data Analysis

Competitively priced farm medicines  
Live stock fertility testing and advice

Vet Tech services  
Disease Prevention

Holsworthy   Stratton   Bradworthy   Camelford

[www.penbodevets.co.uk](http://www.penbodevets.co.uk)

Just shy of 300 calves penned, trade of two halves with Native Bulls and Continental heifers seeing the best trade but the best bulls still harder to place.

### WEANED CALVES

**What a trade!** Bulls and heifers saw a huge demand, with a fantastic group from J Angell, Holsworthy topping at £470 for 4 Aberdeen Angus bulls with more to £420 and £390. Same vendors had British Blue bulls to £450 (x5), Charolais bulls to £450 and Limousin bulls to £400. J Angell carried on with a good trade for his heifers topping with British Blue heifers at £460 (x4), Aberdeen Angus heifers to £430 (x2), Charolais heifers to £410 and Hereford heifers to £395.

WEANED CALVES						
BREED	BULLS			HEIFERS		
	No	Top	Ave	No	Top	Ave
British Blue	12	450	408	8	460	442
Hereford x	2	325	263	2	395	395
A. Angus	9	470	406	4	430	375
Charolais	1	450	450	2	410	378
Limousin x	2	400	400	-	-	-

### MILK CALVES

British Blue bulls to £360 for P & J Pengilly & Sons, Philham, £330 for LJ Goaman & Sons, Hartland, £325 LJ & LW Luxton & Son, Milton Damerel, £305 for R Gorst & Son, North Petherwin and £300 for AW Pomeroy & Son, West Putford. Limousin bulls to £360 for SR Gilbert & Son, Sheepwash, £355 for RWH Dilling again and £270, £265, £225 for WJ & CC Bond, Buckland Brewer. Charolais bulls to £365 for BD & DG Andrew, Shebbear, £340, £318, £315 for WS Jose & Son, North Tamerton more to £305, £300, £280, £270 & £250 for LJ Goaman & Sons again. Hereford bulls to £320, £280 for B & D & A & V Timms, Okehampton, £245 for RWH Dilling, Highampton and £230 for B & D & A & V Timms again. Aberdeen Angus bulls to £275 for LJ & LE Luxton & Son, Milton Damerel and £202 for R & S Home, East Putford. British Blue heifers to £350, £330 for P & J Pengilly & Son, again, more to £330 for CL Stevens, Woolsery, £300 (x3) for AW Pomeroy & Son, again and RB & NJ Veale, Halwill. Charolais heifers to £315 for WS Jose & Son again, £305 for BD & DG Andrew again and £260 (x2), £250 for LJ Goaman & Son again. Limousin heifers to £280 for NC & RM Skinner, Halwill, £260, £210, £180 and £175 for WJ & CC Bond again. Aberdeen Angus heifers to £200 for SNA & ME Furse, Ashwater, £148 and £126 (x2) for HJ & B Whell, Luxulyan. Hereford heifers £260 for RWH Dilling again.

MILK CALVES						
BREED	BULLS			HEIFERS		
	No	Top	Ave	No	Top	Ave
A. Angus	41	275	119	39	200	80
Limousin x	5	360	295	9	280	166
British Blue	38	360	200	43	350	152
Hereford x	23	320	126	9	260	72
Charolais x	14	365	238	13	315	213
Friesian	12	188	78	-	-	-
Simmental x	1	150	150	-	-	-
Welsh Black	1	190	190	-	-	-

### DAIRY SIRED CALVES

Firey trade for Friesian bulls today, top price £188 for P & J Pengilly & Son again, £138 for Westcott Farm Partnership, Sutcombe, £104 for RA & EM Haworth, Morwenstow, with smaller Friesians to £76 (x4) for Raffae Dairy Ltd, Bradworthy and £59 (x3) for Cory Farm Ltd, Morwenstow.

**Please pre enter calves so we can inform potential buyers of anticipated numbers. Text, call or WhatsApp Tim Kivell 07788 281900.**

**PLEASE NOTE: From now on the Milk Calves will be picked out and sold before the Weaned/Reared Calves.**



**290 STORE CATTLE – 11:00am**  
Auctioneer: David Kivell - 07899 960272

Another strong entry for January and several quality consignments on offer. Top of the day was £1720 for a 23mth single suckled British Blue from Mr G Rose of Highampton, who sold other 19mth British Blues at £1580 and four nice Limousins 21mths at £1570. Single suckled Limousins from Messrs DJ & ML Challacombe of Winkleigh £1240 and M/s DE Gay of Ashwater £1240(3). A nice run of single suckled natives from Messrs E & VM Partridge of Woolsery saw Herefords 23mths £1650 and Aberdeen Angus from the same farm £1525. Other single suckled Aberdeen Angus (non FA) from Messrs RH Petherick of Holsworthy £1460. Best of the Dairy X Continental steers topped at £1565 for two Montbeliarde from Messrs RL Heard & Son of Hartland. British Blue steers from Messrs EG Bluett & Son of North Tamerton £1545(3). Other British Blues from Messrs HR Yelland & Son of Clawton £1490 and Hereford from M/s DE Gay of Ashwater £1445. Several small framed Native and Continentals this week saw most steers £950-£1050. Holsteins again in demand £1405 being the top from Messrs RL Heard & Son of Hartland. Two British Friesian types from Messrs HR Yelland & Son £1170. Outlying Friesians from Messrs TJ Boughton & Son of Bradworthy selling well at £1055.

Several real good shapely meat heifers this week. £1590 being the top for a British Blue from Messrs EG Bluett & Son of North Tamerton and £1590 was also achieved by Messrs RH Petherick of Clawton for a British Blue heifer. Single suckled Limousin heifers from Mr G Rose of Highampton £1550, others from the same farm £1455, plenty £1350+. Native heifers hit £1530 for two Herefords from Messrs EG Bluett of North Tamerton, who sold other Herefords £1335. An outlying Hereford from Mr IH Barkwill of Milton Abbot £1245 and single suckled Hereford heifers from Mr N Congdon of Saltash selling well at £1210 and £1200. Few Aberdeen Angus heifers to a top of £1160 from Messrs DG & AM Gerry of Ashwater. Holstein heifers to £1220 for two from Messrs NC & RM Skinner of Halwill.

### YOUNGER STORES

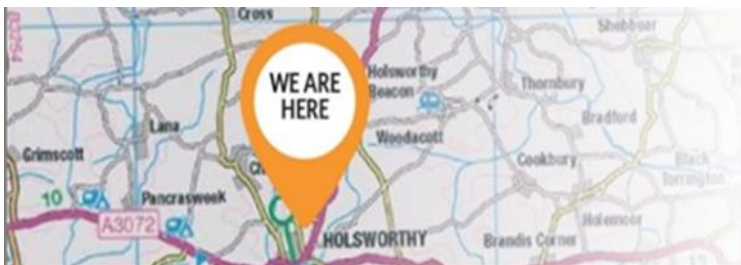
Single suckled steers topped at £1090 for a 12mth British Blue from Mr G Rose of Highampton. 10mth British Blue steer from the same farm £1080 and £1070. 9mth Dairy X British Blue steers £770 from Messrs TJ Boughton & Son of Bradworthy. Aberdeen Angus steers from the same farm £805 and British Blue heifers to £615 9mths. 11mth outlying Holsteins sold well at £715. **More Required.**



### COWS & CALVES

A dispersal from Mrs C Barkwell of Hatherleigh saw Limousin cows with young calves at foot £1220. Devon cows saw two at £1160 and £1010. Three in calf Devon cows due March/April saw a top of £960.

**To book in stores or arrange an on farm valuation, Tel: Alec Shadrack 07767 896136, Charlie Kivell 07794 000325 or Holsworthy Office 01409 253275**



**NOW IN:**

- **HOLSWORTHY**
- **BUDE**
- **BRADWORTHY**

**TORCH**  
FARMVETS

**Independent vets, dedicated care**

t: 01409 331007

e: [info@torchfarmvets.com](mailto:info@torchfarmvets.com)

[torchfarmvets.com](http://torchfarmvets.com)



## FORTHCOMING DAIRY SALES

### WEDNESDAY 24 JANUARY – HOLSWORTHY MARKET

Sale of 63 Dairy Cattle. To include freshly calved Cows and Heifers from the pedigree 'Bocaddon, Coppicepark, Janeck, Stlawrence' herds and other regular vendors. PLUS 29 weaned and milk Heifer Calves.

## JOB VACANCIES

### Livestock Handlers - Holsworthy, Hallworthy & Exeter

Working as part of our Livestock Handlers Team, duties for this role include loading and unloading stock and assisting with the movement of stock through the market whilst always adhering to health and safety protocols. The role will also involve washing and preparing livestock as and when required for the market and dispersal sales. A background knowledge in agriculture and handling stock is essential, as well as a commitment to animal welfare.

For further information or to apply for these posts, please visit our website [www.kivells.com/job-vacancies](http://www.kivells.com/job-vacancies) or contact our HR team by email at [sarahlouise.lydall@kivells.com](mailto:sarahlouise.lydall@kivells.com)

## VET ATTESTATIONS WHAT'S CHANGING & WHY?

Changes in EU legislation, as from **13th December 2023**, will require all producers selling livestock for slaughter to have had an annual on-farm veterinary visit to allow their animals, and/or part of any animal, to be exported out of the UK

### THIS WILL BE VERIFIED BY A VETERINARY ATTESTATION DECLARATION.

Provided by the vet on farm, valid for 12 months.  
Includes a unique veterinary attestation number ("VAN")

Example  
1234567 - 12/345/6789 - 1024  
[Vet MRCVS number] [CPH no.] [Valid to end of Oct 2024]

### VENDORS SHOULD PROVIDE THE AUCTIONEERS WITH THEIR "VAN" NUMBER

Members of qualifying assurance schemes (Red Tractor, FAWL WLBP, QMS) do not require a veterinary attestation declaration

Guidance provided by the Livestock Auctioneers Association Limited  
[www.laa.co.uk](http://www.laa.co.uk)



## VET ATTESTATIONS WHAT'S THE PROCESS IN LIVESTOCK MARKETS?

VENDOR PROVIDES THE AUCTIONEERS WITH THEIR "VAN"  
OR QUALIFYING ASSURANCE SCHEME MEMBERSHIP NO.



**SHEEP** - Included within the official sheep movement form

**CATTLE** - Via the market entry form

**PIGS** - Via the digital eAML2 form

A "VAN" is valid for 12 months.

AUCTIONEERS UPLOAD VENDORS "VAN" INTO THE  
MARKET SYSTEM

Any livestock that are not accompanied by a "VAN" or assurance scheme membership will be announced at point of sale.

FOLLOWING SALE, THE "VAN"/ASSURANCE NUMBER FOR  
EACH LOT WILL BE PROVIDED TO THE PURCHASER ON  
THEIR SALES INVOICE

This can be provided to the abattoir Vet if/when required.

The requirement for Veterinary Attestations for all livestock sold for slaughter is due to a change in EU legislation.

Guidance provided by the Livestock Auctioneers Association Limited  
[www.laa.co.uk](http://www.laa.co.uk)



## VET ATTESTATIONS HOW TO PREPARE FOR THE CHANGES

Prior to **13th December 2023**, livestock producers should arrange a veterinary visit on farm for completion of the **Veterinary Attestation Declaration**.

This visit can coincide with any other routine on-farm veterinary visit, or **Animal Health & Welfare Pathway Review**.  
Speak to your Auctioneer for more details (AHWP - England Only).

In some cases, vets may be able to provide retrospective Veterinary Attestation Declaration if a recent on-farm visit has taken place that meets the requirements.

OR producers can provide evidence of a qualifying assurance scheme.

(Red Tractor, FAWL WLBP, QMS)

The requirement for Veterinary Attestations for all livestock sold for slaughter is due to a change in EU legislation.

Guidance provided by the Livestock Auctioneers Association Limited  
[www.laa.co.uk](http://www.laa.co.uk)



## VET ATTESTATIONS WHAT ELSE DO I NEED TO KNOW?

IS A "VAN" NUMBER REQUIRED FOR ALL LIVESTOCK?

No. A "VAN" is only required for livestock sold for slaughter, from the consigning holding.

IS THERE A MINIMUM RESIDENCY PERIOD FOR THE LAST HOLDING?

The requirement for a "VAN" number is applicable only to the last holding, regardless of residency period.

WHAT HAPPENS IF A VENDOR DOES NOT HAVE A "VAN" OR  
MEMBERSHIP OF AN ASSURANCE SCHEME BY 13TH DECEMBER 2023?

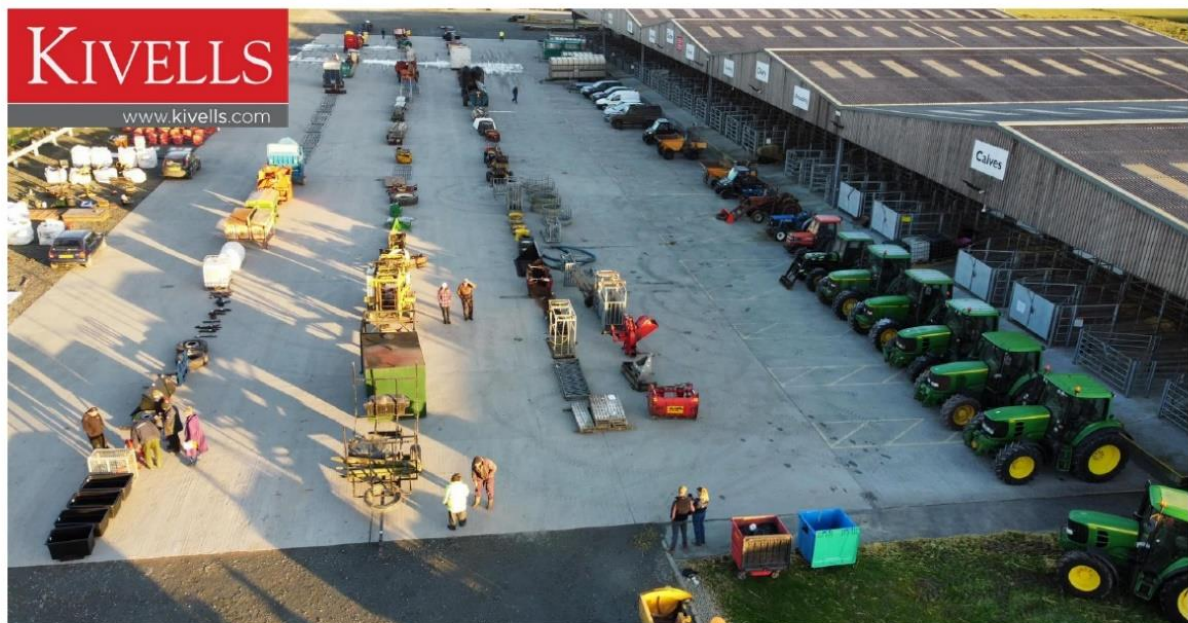
Any livestock without a "VAN" or membership of a qualifying assurance scheme will be identified at point of sale and may not be eligible for export.

The requirement for Veterinary Attestations for all livestock sold for slaughter is due to a change in EU legislation.

Guidance provided by the Livestock Auctioneers Association Limited  
[www.laa.co.uk](http://www.laa.co.uk)







# MONTHLY COLLECTIVE MACHINERY SALE

**Saturday 3rd February 2024**

**Holsworthy Livestock Market, EX22 7FA**

Sale of Tractors, Vehicles, Machinery, Implements & Effects



**Get your entries in now for free advertising!**

*[machinery@kivells.com](mailto:machinery@kivells.com) or 01409 253253*

**FEB** **3** **HOLSWORTHY** *Monthly Collective Sale*  
Holsworthy Market, New Market Road, Holsworthy, Devon EX22 7FA

**TAKING ENTRIES NOW!**

**9:30am**  
online bidding  
from  
**11am**

Call: 01409 253253  
Email: [machinery@kivells.com](mailto:machinery@kivells.com)  
WhatsApp: 07399 298995

Scan for  
Entry  
Form



# **LARK PLANT LTD**

## **AGRICULTURAL CONTRACTORS & PLANT HIRE**

**!!!NEW FOR 2023!!!**

**SELF PROPELLED FORAGE HARVESTER**

**FOR ALL OF YOUR SILAGE REQUIREMENTS**

**FULL OR PART JOBS UNDERTAKEN**



**ALSO ON OFFER – JOHN DEERE HARVEST LAB 3000**

**WE CAN MEASURE THE DRY MATTER, CROP MOISTURE AND ADJUST THE CROP LENGTH  
OVER DIFFERENT PARTS OF THE FIELD TO ENSURE OPTIMUM SILAGE COMPACTION  
WITHOUT OXYGEN ENCLOSURES DURING CLAMPING**

**IT ALSO MEASURES TONNAGE PER FIELD, ACRE OR WHOLE AREA AT THE END OF THE DAY  
WITH READINGS FOR CRUDE PROTEIN, STARCH, CRUDE FIBRE (NDF), SUGAR (ADF) AND  
CRUDE ASH WITH A HIGH PRECISION DURING HARVESTING**

**FOR ENQUIRIES PLEASE CALL THE OFFICE ON 01409 211214  
AND/OR THE MOBILE 07939 538902**





## READY MIXED CONCRETE

♦ Ready Mixed Concrete

♦ Liquid Floor Screeds

♦ Dry Screed

♦ Sand & Aggregates

FAST  
FRIENDLY  
PROFESSIONAL

FOR QUOTES, BOOKINGS, OR MORE INFORMATION,  
PLEASE CALL US ON 01288 362111 (OPTION 2) OR EMAIL US AT

[rmc@macplant-ltd.co.uk](mailto:rmc@macplant-ltd.co.uk)

Mac Crete  
Bridgerule Industrial Estate  
Holsworthy  
EX22 7EB



[www.macplant-ltd.co.uk](http://www.macplant-ltd.co.uk)





## **Lely Collector - A revolutionary manure robot**

The Discovery Collector is specifically designed for barns with solid floors and can easily navigate in between the cows, the sorting gates and around the cubicle passages and waiting area.

Call Lely Center Holsworthy on 01409 413122 for more information



[www.lely.com/en/lely-holsworthy/](http://www.lely.com/en/lely-holsworthy/)

## LAND AND BUILDINGS TO LET

**Hennett Farm, St. Juliot, Boscastle, Cornwall**

- Kivells have received instructions to let land and buildings at Hennett Farm, (approximately 282.24 acres), near Boscastle, from the Elson family, following a change in farming policy.
- The Farm will be let by informal tender under a 5 year Farm Business Tenancy (under the Agricultural Tenancies Act 1995), commencing on 1st April 2024.
- The Farmhouse is excluded, and the Landlord will continue to live there.
- The land has generally been used as one third arable and two thirds grass, supporting a beef finishing enterprise. Over half of the farm has been ploughed in the last 10 years.
- All tenders must be returned to Kivells, Holsworthy Market, no later than Friday 23rd February 2024 at 12 noon. The Landlord is not bound to accept the highest or any particular tender.
- Tenders are to be submitted in a sealed envelope marked "Land and Buildings at Hennett Farm" for the attention of Thomas Rattray. No envelopes shall be opened prior to the tender deadline.

Full details available from Thomas Rattray BSc (Hons) MRICS FAAV  
Holsworthy Farms & Land Department  
[thomas.rattray@kivells.com](mailto:thomas.rattray@kivells.com) | 01566 776886 | 07813 016804





## LAND TO LET

### HEADON FARM, HOLLACOMBE, HOLSWORTHY, DEVON

The land will be let by Informal Tender on a three year Farm Business Tenancy (under the Agricultural Tenancies Act 1995). It extends to approximately 98.06 acres and shall be for cutting only (winter sheep grazing permissible from October to March inclusive).

All tenders must be returned to Kivells – Holsworthy Market no later than Friday 22nd March 2024 at 12 noon.

Full details available from Thomas Rattray BSc (Hons) MRICS FAAV  
Holsworthy Farms & Land Department  
[thomas.rattray@kivells.com](mailto:thomas.rattray@kivells.com) | 01566 776886 | 07813 016804

# KIVELLS

[www.kivells.com](http://www.kivells.com)

## GRASS KEEP TO LET

### TREHAN FARM, TREHAN, SALTASH, CORNWALL

Available in a single lot of 102 acres for cattle and sheep grazing and a maximum of one cut from 1st April – 31st October 2024. No attention given. Mains water in each parcel and licence fee to be paid in two equal instalments on 1st April and 1st August 2024.

Tenders to be submitted no later than 5pm on Monday, 18th March 2024.

Full details available from Mark Bunt BSc MRICS FAAV  
Liskeard Farms & Land Department  
[mark.bunt@kivells.com](mailto:mark.bunt@kivells.com) | 01579 345 543 | 07879 640970

# KIVELLS

[www.kivells.com](http://www.kivells.com)

## LAND TO LET

### TRESMARROW, LAUNCESTON, CORNWALL

The land extends in all to approximately 76.58 acres and is currently in pasture, with access off an adjoining parish road and serviced by mains water. The land benefits from a livestock handling facility and is well fenced for stock purposes. Available on a three year Farm Business Tenancy commencing on 25th March 2024.

Tenders to be submitted no later than 5pm on Monday, 4th March 2024.

Full details available from Mark Bunt BSc MRICS FAAV  
Liskeard Farms & Land Department  
[mark.bunt@kivells.com](mailto:mark.bunt@kivells.com) | 01579 345 543 | 07879 640970

# KIVELLS

[www.kivells.com](http://www.kivells.com)

## LAND AND BUILDINGS TO LET

### TREWOODLOE AND GOLBERDON DOWN, GOLBERDON, CALINGTON

188.54 acres and range of modern farm buildings available in two lots.  
Lot 1 – 121.08 of pasture land and range of modern farm buildings.  
Lot 2 – 67.46 acres of pasture and arable land.

Available on a five year Farm Business Tenancy commencing on 29th September 2023.  
Tenders to be submitted no later than 5.00pm Friday, 4th August 2023.

Full details available from Mark Bunt BSc MRICS FAAV  
Liskeard Farms & Land Department  
mark.bunt@kivells.com | 01579 345 543 | 07879 640970

# KIVELLS

www.kivells.com

## LAND TO LET

### TREGENNA FARM, LERRY, LOSTWITHIEL, CORNWALL

176.18 acres of arable and pasture land available in three lots

Lot 1 – 58.76 acres  
Lot 2 – 73.37 acres  
Lot 3 – 44.05 acres

Available on a three year Farm Business Tenancy commencing on 29th September 2023.  
Tenders to be submitted no later than 5pm Friday, 4th August 2023

Full details available from Mark Bunt BSc MRICS FAAV  
Liskeard Farms & Land Department  
mark.bunt@kivells.com | 01579 345 543 | 07879 640970

# KIVELLS

www.kivells.com

## FARM TO LET

### KITCHADON FARM, EGGESFORD, CHUMLEIGH, DEVON

300 acre arable and stock rearing farm with a four room farmhouse, range of farm buildings and option for a commercial mill.

Available on a 10 year Farm Business Tenancy Agreement by Informal Tender.  
Tenders closing 5.00pm Friday, 20th October 2023.

Tender Particulars available from www.kivells.com or mark.bunt@kivells.com

Full details available from Mark Bunt BSc MRICS FAAV  
Liskeard Farms & Land Department  
mark.bunt@kivells.com | 01579 345 543 | 07879 640970

# KIVELLS

www.kivells.com



# Farms For Sale

# KIVELLS

[www.kivells.com](http://www.kivells.com)

## Badges

### Clawton, Holsworthy, Devon

- A real lifestyle opportunity in the heart of unspoilt Devon countryside
- Pretty and beautifully presented three bedroom cottage
- Small range of outbuildings including a stone & cob shippoon with potential (subject to planning) and a modern 45' x 40' barn
- 67 acres of pasture land and woodland with river frontage
- Huge conservation appeal.

**Guide Price: £895,000**

Holsworthy Farms & Land Agency  
[farms@kivells.com](mailto:farms@kivells.com) | 01409 259547





# Land For Sale

# KIVELLS

[www.kivells.com](http://www.kivells.com)

## Land at Crylla

Common Moor, Liskeard | Guide Price £1,750,000



An excellent ring fenced block of some 141 ½ acres of pasture land on the edge of Bodmin Moor with far reaching views.

Holsworthy Farms & Land Department  
[farms@kivells.com](mailto:farms@kivells.com) | 01409 259547

## Land at Stoke Canon

Exeter, Devon | Guide Price £375,000



A highly productive run of level arable and pastureland with livestock handling pens extending to just under 46 acres.

Exeter Farms & Land Department  
[simon.alford@kivells.com](mailto:simon.alford@kivells.com) | 01392 252262

## Land At Waterwell Lane (Lot 1)

Christow, Exeter | Guide Price £60,000



0.944 acres with a garage and large agricultural building, benefiting from direct road access. Further land available.

Exeter Farms & Land Department  
[Exeter@kivells.com](mailto:Exeter@kivells.com) | 01392 252262

## Land At Waterwell Lane (Lot 3)

Christow, Exeter | Guide Price £70,000



2.5499 acres in two enclosures and a timber building with lean-to. The land benefits from direct road access and natural and well water. Further land available.

Exeter Farms & Land Department  
[Exeter@kivells.com](mailto:Exeter@kivells.com) | 01392 252262

## Land At Seckington

Winkleigh, Devon | Offers in excess of £300,000



Just over 29 acres of south facing, productive pasture and arable land. Useful sized enclosures with road frontage.

Holsworthy Farms & Land Agency  
[Farms@kivells.com](mailto:Farms@kivells.com) | 01409 259547

## Land at Tilland

Tideford, Saltash | Guide Price: £525,000 - £550,000



Approximately 71 acres of excellent grazing land with Parish road frontage. Good sized enclosures with excellent access.

Holsworthy Farms & Land Agency  
[Farms@kivells.com](mailto:Farms@kivells.com) | 01409 259547



# Land for Auction

## Wednesday 21st February, 7.00pm

Venue: Lifton Strawberry Fields, Lifton, Devon PL16 0DE

# KIVELLS

[www.kivells.com](http://www.kivells.com)

### Land at Higher Pigsdon (LOT 1)

Launcells, Bude | Auction Guide Price £330,000 - £350,000  
For sale by public auction - Wednesday 21st February



Just over 42 acres of productive grassland, including 3 acres of attractive mature broadleaf woodland. Road frontage. No footpaths. Natural water with mains water connection available.

Holsworthy Farms & Land Department  
[farms@kivells.com](mailto:farms@kivells.com) | 01409 259547

### Land at Higher Pigsdon (LOT 2)

Launcells, Bude | Auction Guide Price £170,000 - £180,000  
For sale by public auction - Wednesday 21st February



Approximately 21.66 acres of gently sloping grass and arable land with parish road frontage. No footpaths. Natural water supply with mains available close by.

Holsworthy Farms & Land Department  
[farms@kivells.com](mailto:farms@kivells.com) | 01409 259547

### Land at Trevedda

Lanteglos, Fowey | Auction Guide Price £280,000 - £300,000  
For sale by public auction - Wednesday 17th January



Approximately 33.18 acres of productive arable land within a ring fence with quiet parish road frontage and situated in a noted farming district.

Liskeard Farms & Land Department  
[mark.bunt@kivells.com](mailto:mark.bunt@kivells.com) | 01579 345543

### Land East of Beechlea

Coads Green, Launceston | Auction Guide Price £125,000  
For sale by public auction - Wednesday 21st February



Nearly 13 acres of productive arable/pasture land on the outskirts of a popular village, level and very gently sloping. Dual road frontage with excellent access and pleasant views.

Holsworthy Farms & Land Department  
[farms@kivells.com](mailto:farms@kivells.com) | 01409 259547

### Barn & Land at Neydown

Treskinnick Cross | Auction Guide Price £100,000 - £120,000  
For sale by public auction - Wednesday 21st February



Fantastic opportunity for a multitude of uses. Just over half an acre with a concrete block barn including a hardstanding and grass paddock.

Holsworthy Farms & Land Department  
[farms@kivells.com](mailto:farms@kivells.com) | 01409 259547

### Three Corner Field

Whiteley, Lifton | Auction Guide Price £75,000  
For sale by public auction - Wednesday 21st February



Attractive gently sloping 3 acres paddock, ideal for equestrian use. Timber stable (on skids). Far reaching views. Convenient location, not far from the village. Main road access.

Holsworthy Farms & Land Department  
[farms@kivells.com](mailto:farms@kivells.com) | 01409 259547



# Land for Auction

## Wednesday 21st February, 7.00pm

Venue: Lifton Strawberry Fields, Lifton, Devon PL16 0DE

# KIVELLS

[www.kivells.com](http://www.kivells.com)

### Land at Monkspark

Little Torrington, Torrington | Auction Guide Price £75,000  
For sale by public auction - Wednesday 21st February



The land at Monkspark extends to some 3.47 acres and comprises a single mainly level pasture field located on the edge of the small village of Little Torrington.

Holworthy Farms & Land Department  
[farms@kivells.com](mailto:farms@kivells.com) | 01409 259547

### Land at Binkham Farm (LOT 1)

Yelverton, Devon | Auction Guide Price £75,000 - £85,000  
For sale by public auction - Wednesday 21st February



Some 5.89 acres of pasture land and a useful general purpose building with stabling.

Holworthy Farms & Land Department  
[farms@kivells.com](mailto:farms@kivells.com) | 01409 259547

### Land at Binkham Farm (LOT 2)

Yelverton, Devon | Auction Guide Price £65,000 - £75,000  
For sale by public auction - Wednesday 21st February



A gently sloping pasture paddock, with a natural water supply, totalling 6.66 acres.

Holworthy Farms & Land Department  
[farms@kivells.com](mailto:farms@kivells.com) | 01409 259547

### Land at Binkham Farm (LOT 3)

Yelverton, Devon | Auction Guide Price £45,000 - £50,000  
For sale by public auction - Wednesday 21st February



Approximately 8.60 acres of pasture land with a small area of woodland and a natural water supply

Holworthy Farms & Land Department  
[farms@kivells.com](mailto:farms@kivells.com) | 01409 259547

### Land at Wonders Corner Farm

Langtree, Torrington | Auction Guide Price £50,000 - £75,000  
For sale by public auction - Wednesday 21st February



An attractive gently sloping pasture field extending to some 4.37 acres. Main road frontage and access. Natural water. Far reaching countryside views

Holworthy Farms & Land Department  
[farms@kivells.com](mailto:farms@kivells.com) | 01409 259547

### Land at Green Cart Farm

Lostwithiel | Auction Guide Price £40,000 - £50,000  
For sale by public auction - Wednesday 21st February



A level parcel of land measuring approx. 3.5 acres and accessed directly from a parish road. The land enjoys countryside views and has a wealth of opportunities for its use.

Liskeard Farms & Land Department  
[liskeard@kivells.com](mailto:liskeard@kivells.com) | 01579 345543



# Previous Auction Results

## Wednesday 17th January

# KIVELLS

[www.kivells.com](http://www.kivells.com)

### Land at Little Panson

St. Giles-on-the-Heath, Launceston | Auction Guide Price £175,000  
**SOLD: £175,000**



Just under 20 acres of level pasture land in three principal enclosures. Mainly level or gently sloping with natural water and main road access.

Holsworthy Farms & Land Department  
[farms@kivells.com](mailto:farms@kivells.com) | 01409 259547

### Land off Appledore Road

Northam, Bideford | Auction Guide Price £110,000  
**SOLD: £150,000**



The land off Appledore Road extends to some 4.58 acres and comprises a very gently sloping pasture field enclosed within natural hedge banks and post and wire fencing.

Holsworthy Farms & Land Department  
[farms@kivells.com](mailto:farms@kivells.com) | 01409 259547

### Land at Cottage Farm

Jacobstow, Bude | Auction Guide Price £325,000 - £350,000  
**SOLD: £385,000**



Some 51.19 acres of organic pasture land with road access and far reaching views (with an option to buy a wind turbine lease at a fixed additional charge).

Holsworthy Farms & Land Department  
[farms@kivells.com](mailto:farms@kivells.com) | 01409 259547

### Bulland Barn

St. Cleer, Liskeard | Auction Guide Price £50,000 - £75,000  
**SOLD: £60,000**



Two adjoining traditional stone barns with potential, subject to planning. Quiet rural valley setting with lovely views. Mains water and electricity on site (not connected).

Holsworthy Farms & Land Department  
[farms@kivells.com](mailto:farms@kivells.com) | 01409 259547



# Previous Auction Results

Wednesday 17th January

# KIVELLS

[www.kivells.com](http://www.kivells.com)

## Sunny Bank

Yeoford, Crediton, Devon

- Four-bedroom detached farmhouse
- Opportunity to personalise and create a family home
- Generous plot exceeding approximately 2.50 acres
- Outbuildings
- Countryside views
- Rural, yet accessible setting

**Auction Guide Price: £350,000**

**SOLD: 385,000**

Exeter Farms & Land Agency  
[exeter@kivells.com](mailto:exeter@kivells.com) | 01392 252262





# Farms Sale Agreed

# KIVELLS

www.kivells.com

## Solomons Farm Exminster, Exeter, Devon



- A productive ring-fenced farm peaceful countryside
- Farm bungalow (AOC) with far reaching views
- Range of adaptable modern livestock & general buildings
- In all about 99.53 acres. Available as a whole or in two lots

**Lot 1: Guide Price: £800,000**

**Lot 2: Guide Price: £1,125,000**

Exeter Farms & Land Agency  
exeter@kivells.com | 01392 252262

## Lower Trevorder Farm Mount, Bodmin, Cornwall



acquire 193 acre quality stock and arable land  
modern adaptable stock buildings  
culture and arable land  
completed three bedroom farmhouse  
Diversification income via Telecommunications Masts  
Extremely accessible location, not far from the A38  
In all some 193 acres

**Guide Price: £2,300,000 - £2,400,000**

Lower Trevorder Farms & Land Agency  
lower@kivells.com | 01579 345543

## Keymelford Farm Buildings & Land Keymelford, Colebrook, Crediton, Devon



## Keymelford Farm Buildings & Land Keymelford, Colebrook, Crediton, Devon



For sale in three lots, Keymelford Farm Buildings & Land are suitable for a variety of alternative uses subject to the usual consents.

**Lot 1** - Agricultural buildings and yard area with surrounding extending to 0.41 acres.

**Guide Price: £150,000**

Exeter Farms & Land Agency  
exeter@kivells.com | 01392 252262

# KIVELLS

www.kivells.com

Kivells. The sign that sells!

## SALE AGREED

Agricultural buildings and yard area with land surrounding extending to 0.41 acres.

**Guide Price: £150,000**

**Lot 2** - Agricultural building with concrete pad and land surrounding extending to 0.41 acres.

**Guide Price: £135,000**

**Lot 3** - A small grassland area extending to approximately 0.18 acres. **Guide Price: £25,000**

Exeter Farms & Land Agency  
exeter@kivells.com | 01392 252262

# Farms Sale Agreed

# KIVELLS

[www.kivells.com](http://www.kivells.com)

## Franklands Farm Neopardy, Crediton, Devon



## Meadow Court North Tawton, Devon



# KIVELLS

[www.kivells.com](http://www.kivells.com)

Kivells. The sign that sells!

## SALE AGREED

**Lot 1** - Farmhouse and approximately 3.54 acres  
**Guide Price: £580,000**

**Lot 2** - Former agricultural buildings extending to approximately 1.24 acres  
**Guide Price: £200,000**

**Lot 3** - Agricultural land and 49.07 acres of woodland  
**Guide Price: £390,000**

**Lot 4** - Approximately 13.71 acres.  
**Guide Price: £160,000**

Exeter Farms & Land Agency  
[exeter@kivells.com](mailto:exeter@kivells.com) | 01392 252262

**Meadow Court Bungalow, buildings and approximately 1.24 acres of agricultural land**  
**Guide Price: £635,000**

**Lot 2: Former agricultural buildings and approximately 19.59 acres of agricultural land totalling approximately 19.59 acres**  
**Guide Price: £155,000**

**Lot 3: Agricultural land and 49.07 acres of woodland and approximately 15.17 acres of woodland and woodland**  
**Guide Price: £350,000**

**Lot 4: Agricultural land and woodland totalling approximately 13.71 acres**  
**Guide Price: £160,000**

Exeter Farms & Land Agency  
[exeter@kivells.com](mailto:exeter@kivells.com) | 01392 252262



# Farms Sale Agreed

# KIVELLS

[www.kivells.com](http://www.kivells.com)

## New Hartswell Farm Herodsfoot, Liskeard, Cornwall

- Organic green-field dairy enterprise
- Some 98 acres in all
- 16:32 herringbone parlour & 150 cubicles
- Planning permission for a dwelling
- Planning for conversion of an existing barn
- 80kw wind turbine and 60kw solar array
- Fantastic far reaching views and not far from the South Cornish coast

**Guide Price: £1,950,000**

Holsworthy Farms & Land Agency  
[holsworthy@kivells.com](mailto:holsworthy@kivells.com) | 01409 259547



# SOLD!

Sizable dairy farm with multiple dwellings

# KIVELLS

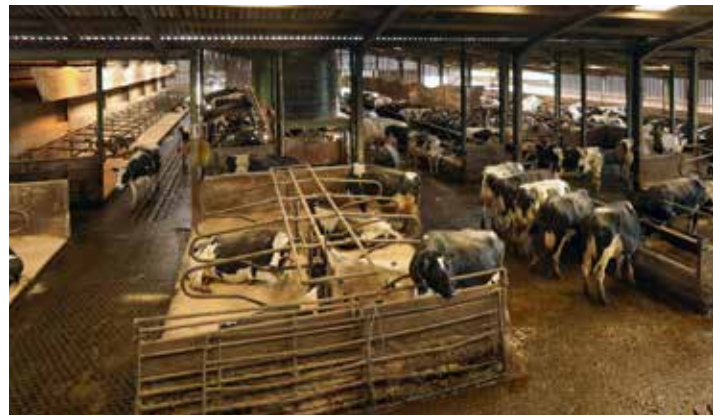
[www.kivells.com](http://www.kivells.com)

## Homelea Farm Highampton, Beaworthy, Devon

**P**eacefully located amongst rolling Devonshire countryside, Kivells were delighted to bring Homelea Farm to the market, an excellent 277 acre ring fenced dairy farm with huge appeal.

Including a five bedroom farmhouse, plus a pair of detached three bedroom bungalows, an extensive range of modern dairy farm buildings providing accommodation for 430 head of cattle, Homelea Farm was launched to the market with a guide of £3,400,000, receiving strong interest from a multitude of potential purchasers.

The farms team and professional department acted as a “one-stop-shop” for the vendors, seeing the farm sell inclusive of its first class herd of cows.





# Land Sale Agreed

# KIVELLS

[www.kivells.com](http://www.kivells.com)

## Land at East Worth

Northlew, Okehampton | Guide Price £625,000

- 76 acres of grassland
- Good sized agricultural building
- With a pond and pockets of woodland
- Well fenced for sheep
- Quiet rural location

Holsworthy Farms & Land Agency  
[Farms@kivells.com](mailto:Farms@kivells.com) | 01409 259547



## Land at Trescoll Farm

Lockengate, Bugle, St Austell | Guide Price £800,000

- A superb run of 80 acres of productive arable land
- Level with good access
- In an accessible location, just off the A30
- Currently in potatoes

Holsworthy Farms & Land Agency  
[Farms@kivells.com](mailto:Farms@kivells.com) | 01409 259547





# Land Sale Agreed

# KIVELLS

[www.kivells.com](http://www.kivells.com)

## Land at Trevoyan

Trevorrick, St. Merryn | Guide Price £900,000

- A superb block of productive arable and pasture land
- In a sought after farming area
- Some 91 acres in two blocks, both with road frontage and excellent access
- For sale by Private Treaty

Holsworthy Farms & Land Agency  
[Farms@kivells.com](mailto:Farms@kivells.com) | 01409 259547



## Land at Trecan

Lanreath, Looe | Guide Price £500,000

- A fantastic block of 42½ acres of productive organic pasture land
- Mainly level or very gently sloping
- Laid out in just two fields
- Planning permission for two agricultural buildings
- Sought after location, close to the South coast

Holsworthy Farms & Land Agency  
[Farms@kivells.com](mailto:Farms@kivells.com) | 01409 259547





# Land Sale Agreed

# KIVELLS

[www.kivells.com](http://www.kivells.com)

## Land at Greenacres

Cheriton Bishop, Exeter | Offers in excess of £95,000



An attractive land parcel split into two enclosures benefiting from two ponds and a piped natural water supply - 9.66 acres.

Exeter Farms & Land Department  
[Exeter@kivells.com](mailto:Exeter@kivells.com) | 01392 252262

## Land At Waterwell Lane (Lot 2)

Christow, Exeter | Guide Price £40,000



1.695 acres of land with natural water supply. Further land available.

Exeter Farms & Land Department  
[Exeter@kivells.com](mailto:Exeter@kivells.com) | 01392 252262

## Land at Tredinnick

St. Mabyn, Bodmin | Guide Price £240,000 - £250,000



Approximately 27.57 acres of productive pasture and arable land with road frontage.

Liskeard Farms & Land Agency  
[mark.bunt@kivells.com](mailto:mark.bunt@kivells.com) | 01409 259547

## Land at Mera Park

Landrake, Saltash | Auction Guide Price £275,000 - £285,000

For sale by public auction - Wednesday 17th January



Approximately 30.27 acres of productive arable land within a ring fence, benefitting from excellent access off the adjoining main road and a quiet parish road.

Liskeard Farms & Land Department  
[mark.bunt@kivells.com](mailto:mark.bunt@kivells.com) | 01579 345543