

LIVE & ONLINE

# MACHINERY

## *On Farm Dispersal*



SEPT  
16

10:30am



On behalf of  
Mr GT Ham

Churchtown Farm, Linkinhorne, Callington PL17 7LY

DISPERSAL SALE OF VINTAGE & MODERN TRACTORS, MACHINERY & EFFECTS

**KIVELLSMACHINERY.MARTEYE.IE**

01409 253253 | MACHINERY@KIVELLS.COM | WWW.KIVELLS.COM



# Foreword

This important dispersal sale follows the decision of Graham Ham to reduce his lifetime collection of tractors and vehicles, due to Graham “getting old!” (Quote Graham Ham- Monday 24<sup>th</sup> July @ 12:26pm)

Graham has farmed Linkinhorne all his working life, with beef, sheep and arable being the core enterprises. Gradually in recent years the corn went, as did the sheep, as did wintering cattle. Finishing beef cattle became Graham’s main enterprise with sheep reappearing in recent years with assistance from Grahams son Spencer and his family.

Over the last 30 years, Graham has enjoyed purchasing a few tractors and his collection includes those he remembered and enjoyed driving as a youth, but now approaching his 80<sup>th</sup> birthday he has decided to let them find new homes.

After 17 years of Spencer Ham trading Agrimanuals, he has built up an excess of stock including manuals, signs, brochures, flags and other memorabilia which will be included in this sale.

Most of the tractors in the sale come with original brochures and manuals.

A sale not to be missed for collecting enthusiasts and something for everyone.

## **Sale contacts:**

David Kivell      07899 960272

Lauren Dennis   01409 253253

# Foreword



# Notice to Purchasers

**1. Registration and Bidding ONLINE-** ONLINE BIDDING is via Marteye, intending bidders must download the MartEye App from your phone App store where you can register. Once you have downloaded the App you need to go on the Kivells Machinery Page and **Sign in** with your details and then click the **Join** button. You can also access MartEye through [kivellsmachinery.marteye.ie](http://kivellsmachinery.marteye.ie) where you will be directed straight to our page and you will be required to **Sign in** with your details and then click the **Join** button. Once you have done this process your application will come through to us for approval. **We strongly advise registering well ahead of the sale as 'late' registrants, on the morning of sale, run the risk of not being approved in time.**

**2. Registration and Live Bidding** All those attending the sale in person will be required to register in the Kivells Pay Office whereby you will obtain a Bidding Card. The Bidding Card will be used to bid on the sale items. No shouting will be necessary.

**3. Commission Bids** - Kivells encourage the use of the Bidding Form which can be downloaded from [www.kivells.com](http://www.kivells.com) and phone bids may be possible - please contact the Auctioneers prior to the sale day.

**4. Registration and Conditions of Sale** - Kivells reserve the right to request additional information to include Driving License/Passport together with a Business Card/Utility Bills/Proof of Address/Business Letter Heading and the right to request a deposit ahead of any purchase or during sale proceedings. Kivells also reserve the right to deregister Buyers. It is strongly recommended that Bidders and Buyers read Kivells Standard Terms and Conditions of Sale ahead of the sale. Once you have registered you are confirming that you have read, agree with and will abide by those Conditions and these Notice to Purchasers. In registering you warrant that the information is correct, up to date on the sale closure date and you are over the age of 18. All registrations are provisional and subject to the approval by Kivells.

**5. Lot Viewing** – Viewing is permitted on the designated dates and times only unless previously agreed with the auctioneers. When inspecting lots, we encourage you to maintain a safe social distance and wear a face mask whilst on the Saleground.

Viewing Date(s) and Times are: 10am-4pm Friday before sale day and from 8am morning of the sale day.

**6. Health & Safety** - Kivells do not accept any liability for any damage or injury to persons, vehicles, plant, machinery, equipment or any lot not arising out of their negligence. When lots are located on The Sellers premises or 3rd party storage facilities then the aforementioned are responsible for Health & Safety. Any person entering the Salegrounds does so at their own risk, must comply with the requirements of any Health and Safety notices and guidelines and be appropriately dressed. All persons entering the premises are hereby given notice that there are significant risks due to the range and display of equipment, vehicle movement and the nature of the premises. Caution should be exercised and children must be fully supervised at all times. Permission from the Auctioneers / Seller or storage facility manager is required ahead of starting powered equipment or machinery. Any incidents or accidents on the premises should be reported to Kivells/ Seller or storage facility manager immediately. Kivells reserve the right for themselves and their Sellers and 3rd party storage facilities to refuse admission to any person or vehicle into the Saleground without giving reason. The Auctioneers also reserve the right for themselves and the Sellers and 3rd party storage facilities to halt any removal in the event there are concerns over the Buyer's or their contractor's capability and methods. The right extends to requesting confirmation of insurance cover, method statements and other assurances to include returnable deposits.



# Notice to Purchasers

**7. Descriptions of Lots** - Kivells has limited access to lots prior to sale and therefore Buyers should satisfy themselves prior to making bids as to the condition of any Lot and should rely on their own judgement as to whether the Lot accords with its description. All Lots are sold with all faults and imperfections and errors of description. All statements are the Auctioneers or Sellers opinion and are not statements or representations of facts. You do not have to bid.

**8. Payment - Currency GBP** – Onsite Attendees - Day of Sale: Online Bidders - The auctioneers will either 1) contact you on day of sale for immediate payment or 2) will email an invoice on the first weekday following the close of the sale. With email payment is thereafter due no later than 24 hours from the time of forwarding the invoice. Payments will be due in full at the final bid price in respect of the lot sold plus all associated costs, Buyers premium and VAT. Payment will only be accepted from the successful purchaser or their duly appointed agent. Any payment is to be by a means approved by the Auctioneers and include the Buyers Commission and VAT. Our terms are strictly cash, Bank Transfer, Debit Card, NO Credit Cards are accepted. Our Bank Account details are: Sort Code 56-00-49 Account Number 32532822.

**9. Payment in Cash** - In order to comply with money laundering regulations The Auctioneers will not accept Cash payments above the maximum permitted at the time of sale. The maximum varies according to exchange rates and currently it is circa £7,000 - £9,000. Buyers are advised to check with the Auctioneers ahead of the sale.

**10. Commission/Buyers Premium** - All Lots will be subject to a Buyers Commission / Premium whether sold by auction, by private treaty or tender pre or post sale. VAT at the standard rate will be charged on all commissions. Buyers shall pay Commission to the Auctioneers at the following rates:

☐ **10% on any single lot up to and including £2000**

☐ **5% on any single lot over £2000**

☐ **Any single lot over £30,000 will be subject to a commission 'cap'**

## **Currency GBP**

**11. Risk** - All lots remain at the risk of the Buyer from the fall of the hammer/closure of bidding for each lot and it is strongly advised that the Buyer effects insurance immediately.

**12. Collection of Lots** - All lots must be removed from the Saleground by end of play sale day (unless other arrangements have been made with the seller or the auctioneers). When removing lots, please ensure you maintain a safe social distance and we encourage you to wear a face mask. Lots can only be removed once full payment has been made. The Buyer is responsible for the collection of their lots and any associated costs of transport. Assistance with loading by The Auctioneers, Seller or the storage facility is given without any liability to The Buyer or The Buyers removal contractor. Buyers are strongly advised to use their own suitably qualified and insured contractors.

**13. Value Added Tax** - Please be aware some lots may be subject to VAT and therefore VAT will be charged in accordance to the current rate and added to all accounts and is applicable to the Commission/Buyers Premium. VAT status will be clearly stated in the Lot description.

# Notice to Purchasers

**14. Export of Lots** - All goods purchased from Kivells auctions that are to be exported or removed from the United Kingdom will:

1. Be dealt with under the requirements set out of HM Customs and Excise publications:

a) VAT Notice 703 dated January 2021 – Goods exported from the UK from 1st January 2021.

2. Be Zero rated for VAT purposes subject to the following conditions being met.

a) The goods are removed from Great Britain within three months from the time of supply (the date of auction). b) Kivells are provided with valid written evidence that the Lots have been removed from Great Britain within three months of the auction closure date. Unless and until the above requirements are fulfilled Purchasers will be charged VAT at the Great Britain standard rate (currently 20%). This will only be refunded if all requirements within the regulations are met within the specified time limits.

The Purchaser or their agent will be responsible for removing the Lots from Great Britain and will act as the importer of record and will be responsible for payment of any VAT, duties, goods and services tax, or other sales or import taxes or duties arising on the exportation of the goods from Great Britain and the importation of the goods into any country.

Neither Kivells or the Seller are responsible for any VAT, duties, goods and services tax, or other sales or import taxes or duties arising on the exportation of the lots from Great Britain and the importation of the lots into any country by the Purchaser or their agent.

Kivells recommend exporters visit <https://www.gov.uk/check-customs-declaration>

**ANY PHYTOSANITARY CERTIFICATION AND DOCUMENTATION REQUIRED TO EXPORT LOTS FROM GREAT BRITAIN ARE STRICTLY THE RESPONSIBILITY OF THE PURCHASER.**



## ONLINE BIDDING AVAILABLE

Simply Download the **MartEye App** from your phone App Store & Register.  
Then press the **JOIN** button on the **Kivells Machinery Page**

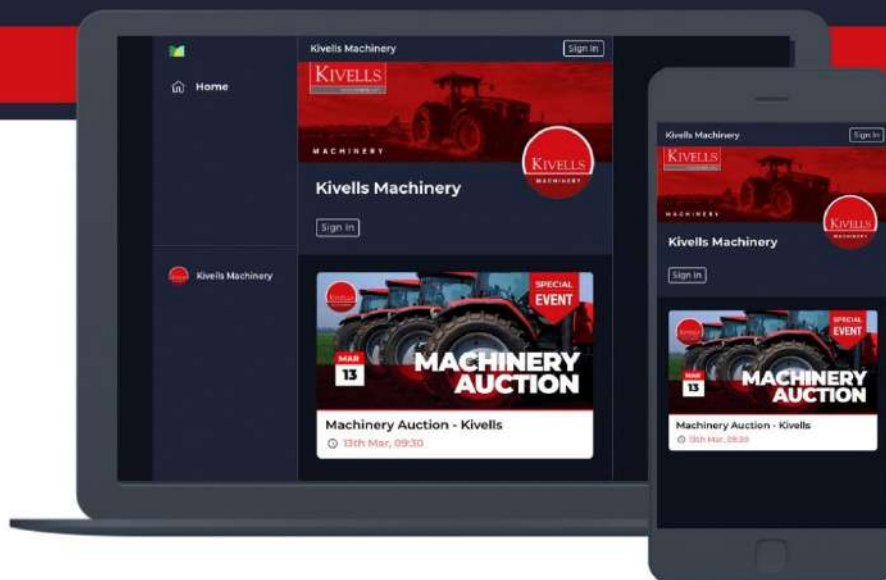
Your full details will be required for using online bidding and a trading reference **MUST** be provided prior to the sale day if you are not known to the Auctioneers. Applications made on the sale day for online bidding run the risk of not being approved. All buyers must ensure they have transport arranged prior to the Sale. All lots must be paid for prior to them leaving the Market.

Please Contact:  
**Holsworthy Market** on **01409 253275**



**ALSO AVAILABLE ON WEBSITE:**

**[kivellsmachinery.marteye.ie](http://kivellsmachinery.marteye.ie)**





# 1963 Fordson Super Major

Purchased from Whitlocks, Holsworthy from new- 402 TCV



# 1961 Massey Ferguson 65

2WD, mark 2- CBU 933B





# 1969 Massey Ferguson 135 with loader

600hrs, duncan cab, new engine 2004 and has done very few hours since-  
OOD 732G



# 1960 Massey Ferguson 35

2WD, new clock- reads 250 hours- 856 HAF





# 1963 Fordson Super Dexta

Registered- 243 SYB



# 1960 Ford Dexta

2WD, runner





# 1947 David Brown Cropmaster

Petrol/TVO, not registered, good working order



# 1960 International 275

2WD, runner





# 1950/1951 David Brown 25D



# 1961 David Brown 950

Implematic with loader, 5,968hrs- 910 GUO



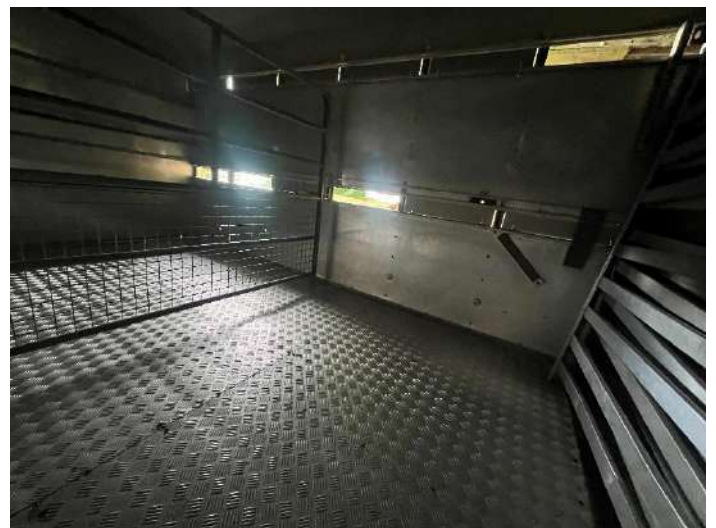


# 1962 Austin A35 van

53,931 miles, tow hitch, no tax or MOT required- YCV 371



# Ifor Williams livestock trailer





Kuhn twin disk  
fertiliser spreader



Hydraulic spike  
harrows



LandMec roto 185  
sip



Hydraulic spring  
tine harrows



Fertiliser spreader



PZ haybob





## Ransomes 4f plough



## Round feeders



## Feeder



## Weigher



## Ford wheel weights



## Front weights

For Ferguson/International





# Qty of granite gateposts, mushrooms, troughs & lintels

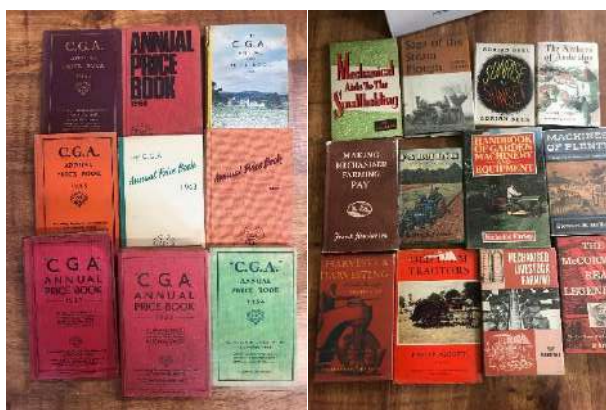


## Various miscellaneous items





Large selection of tractor manuals, sales literature and farming books





## OUTSIDE ENTRIES INCLUDE:

### 1960 Fordson Dexta with loader frame

New from GR Gillard Tractors- 925 GAF



### Zetor 7430 with Quicke 2300 loader

4WD, 2,574hrs- P640 RAF



### New Holland 377 baler



### New Holland super hayliner

68 baler





# Fahr KM22 mower



# Trailer



# Claas Jaguar 60 trailer forager



# 1926 Hornsley mower

Horse drawn, connected to tractor



# Spring tyne cultivator

68 baler



# Spring tyne cultivator



Zweegers haybob



Hayrake



1940 Massey Harris  
plough

2F



Grinding & crushing  
mill



Bucket



Topper





# 2003 Fraser muck spreader

M.M.850- serial no- 22806



# Moulton yard scraper

Little use



# Converted grain trailer

Roughly 5 tonne



**Further entries invited to:**

01409 253253

[machinery@kivells.com](mailto:machinery@kivells.com)

WhatsApp 07399 298995

# Directions

**Churchtown, Linkinhorne, Callington PL17 7LY**

**What 3 words: watching.majors.aimed**

## **From Launceston-**

From Launceston, head towards Callington on the A388. At Penpill cross roads (Dutchy College) turn right to Bray Shop, follow this road for approximately 1 mile and then turn right into the sales field.

## **From Callington-**

Follow the road to Launceston, after approximately 4 miles, turn left at Penpill Crosss (Dutchy College) follow this road for approximately 1 mile and then turn right into the sales field.





# Directions





# Tradition Meets Technology

Our team of Machinery Auctioneers & Coordinators are at hand to sell your farm machinery whether it be on site, online or at one of our many collective auctions conducted throughout the South West and beyond.



## KIVELLS

MACHINERY

Kivells Machinery & Equipment Sales  
Online | On Site | On Market Premises



- 'Our expertise centres around the agricultural sector and as our clients have diversified so have we.
- We sell a huge range of machinery and equipment both into and out of the sector.
- Our online service offering is market leading and the feedback we have received both from our vendors and buyers bears that out. We are proud of our reputation and we are confident the choice of Marteye as Kivells online service partner will add to that.
- Our policy is to offer the best online capability combined with tried and tested traditional methods. We recognise the role auctions play in the agricultural community enabling people to gather and meet and the wellbeing benefits that brings. It is all about achieving the right balance in a safe environment and at the same time maximise the realisation for our vendors and ease of use for our buyers. We believe Kivells combination of market leading sales technology and respect for tradition does just that.'

Thinking of Selling? Feel free to contact me or any of our team for a confidential discussion. It is never too early to plan and prepare'.

David Kivell  
Director

[www.kivells.com](http://www.kivells.com) | [machinery@kivells.com](mailto:machinery@kivells.com)

Holsworthy Livestock Market,  
New Market Road, Holsworthy, Devon EX22 7FA  
01409 253275

Exeter Livestock Centre,  
Matford Park Road, Exeter, Devon EX2 8FD  
01392 251261