

LIVE & ONLINE

REDUCTION SALE

MACHINERY

VEHICLES, PLANT, EQUIPMENT & SUNDRY ITEMS

APR

15

10:30AM



MartEye™

on behalf of
Nick Sampson

Anchor Mills, Braunton Road,
Barnstaple, EX31 1JY



ENTRIES INVITED

CALL: 01409 253253 OR MACHINERY@KIVELLS.COM

KIVELLSMACHINERY.MARTEYE.IE

SALE DAY: PHIL CANN 07881 922788 / DAVID KIVELL 07899 960272

Foreword

Nick Sampson began as one man with a van in 1987, travelling around North Devon to repair plant and commercial vehicles for plant hire companies and local transport companies. Since then, Nick Sampson has grown to comprise a dedicated team of 45 multi-disciplined staff.

From Anchor Mill in Barnstaple, the business provides commercial vehicle repair, maintenance and inspections to DVSA standards. They also offer a range of other services, including coded welding, plant machinery repairs, machinery transportation, heavy haulage solutions and mobile crane hire.

The sale comprises approximately 50 or so items from Nick's inventory which have either been replaced/updated or are now surplus to their requirements. In addition, the sale comprises 200 or so items which have been entered by kind permission.

Sale day contacts:

David Kivell 07899 960272

Phil Cann 07881 922788



Notice to Purchasers

- 1. Registration and Bidding ONLINE** - ONLINE BIDDING is via Marteye, intending bidders must download the MartEye App from your phone App store where you can register. Once you have downloaded the App you need to go on the Kivells Machinery Page and **Sign in** with your details and then click the **Join** button. You can also access MartEye through kivellsmachinery.marteye.ie where you will be directed straight to our page and you will be required to **Sign in** with your details and then click the **Join** button. Once you have done this process your application will come through to us for approval. We strongly advise registering well ahead of the sale as 'late' registrants run the risk of not being approved in time.
- 2. Registration and Live Bidding** - All those attending the sale in person will be required to register in the Kivells Pay Office whereby you will obtain a Bidding Card. The Bidding Card will be used to bid on the sale items. No shouting will be necessary.
- 3. Commission Bids** - Kivells encourage the use of the Bidding Form which can be downloaded from www.kivells.com and phone bids may be possible - please contact the Auctioneers prior to the sale day.
- 4. Registration and Conditions of Sale** - Kivells reserve the right to request additional information to include Driving License/Passport together with a Business Card/Utility Bills/Proof of Address/Business Letter Heading and the right to request a deposit ahead of any purchase or during sale proceedings. Kivells also reserve the right to deregister Buyers. It is strongly recommended that Bidders and Buyers read Kivells Standard Terms and Conditions of Sale ahead of the sale. Once you have registered you are confirming that you have read, agree with and will abide by those Conditions and these Notice to Purchasers. In registering you warrant that the information is correct, up to date on the sale closure date and you are over the age of 18. All registrations are provisional and subject to the approval by Kivells.
- 5. Lot Viewing** – Viewing is permitted on the designated dates and times only unless previously agreed with the auctioneers. When inspecting lots, we encourage you to maintain a safe social distance and wear a face mask whilst on the Saleground. Viewing Date(s) and Times are: From 8am morning of the sale day.
- 6. Health & Safety** - Kivells do not accept any liability for any damage or injury to persons, vehicles, plant, machinery, equipment or any lot not arising out of their negligence. When lots are located on The Sellers premises or 3rd party storage facilities then the aforementioned are responsible for Health & Safety. Any person entering the Salegrounds does so at their own risk, must comply with the requirements of any Health and Safety notices and guidelines and be appropriately dressed. All persons entering the premises are hereby given notice that there are significant risks due to the range and display of equipment, vehicle movement and the nature of the premises. Caution should be exercised and children must be fully supervised at all times. Permission from the Auctioneers / Seller or storage facility manager is required ahead of starting powered equipment or machinery. Any incidents or accidents on the premises should be reported to Kivells/ Seller or storage facility manager immediately. Kivells reserve the right for themselves and their Sellers and 3rd party storage facilities to refuse admission to any person or vehicle into the Saleground without giving reason. The Auctioneers also reserve the right for themselves and the Sellers and 3rd party storage facilities to halt any removal in the event there are concerns over the Buyer's or their contractor's capability and methods. The right extends to requesting confirmation of insurance cover, method statements and other assurances to include returnable deposits.

Notice to Purchasers

7. Descriptions of Lots - Kivells has limited access to lots prior to sale and therefore Buyers should satisfy themselves prior to making bids as to the condition of any Lot and should rely on their own judgement as to whether the Lot accords with its description. All Lots are sold with all faults and imperfections and errors of description. All statements are the Auctioneers or Sellers opinion and are not statements or representations of facts. You do not have to bid.

8. Value Added Tax - Please be aware some lots may be subject to VAT and therefore VAT will be charged in accordance to the current rate and added to all accounts and is applicable to the Commission/Buyers Premium. VAT status will be clearly stated in the Lot description.

9. Payment - Currency GBP – Onsite Attendees - Day of Sale: Online Bidders - The auctioneers will either 1) contact you on day of sale for immediate payment or 2) will email an invoice on the first weekday following the close of the sale. With email payment is thereafter due no later than 24 hours from the time of forwarding the invoice. Payments will be due in full at the final bid price in respect of the lot sold plus all associated costs, Buyers premium and VAT. Payment will only be accepted from the successful purchaser or their duly appointed agent. Any payment is to be by a means approved by the Auctioneers and include the Buyers Commission and VAT. Our terms are strictly cash, Bank Transfer, Debit Card, NO Credit Cards are accepted. Our Bank Account details are: Sort Code 56-00-49 Account Number 32532822.

10. Payment in Cash - In order to comply with money laundering regulations The Auctioneers will not accept Cash payments above the maximum permitted at the time of sale. The maximum varies according to exchange rates and currently it is circa £7,000 - £9,000. Buyers are advised to check with the Auctioneers ahead of the sale.

11. Commission/Buyers Premium - All Lots will be subject to a Buyers Commission / Premium whether sold by auction, by private treaty or tender pre or post sale. VAT at the standard rate will be charged on all commissions. Buyers shall pay Commission to the Auctioneers at the following rates:

- 10% on any single lot up to and including £2000
- 5% on any single lot over £2000 & up to a maximum of £30,000
- Any single lot over £30,000 will be subject to a commission 'cap'

Currency GBP

12. Risk - All lots remain at the risk of the Buyer from the fall of the hammer/closure of bidding for each lot and it is strongly advised that the Buyer effects insurance immediately.

13. Collection of Lots - All lots must be removed from the Saleground by end of play sale day (unless other arrangements have been made with the seller or the auctioneers). When removing lots, please ensure you maintain a safe social distance and we encourage you to wear a face mask. We also encourage you to wear gloves and only those involved in the removal attend the site. Lots can only be removed once full payment has been made. The Buyer is responsible for the collection of their lots and any associated costs of transport. Assistance with loading by The Auctioneers, Seller or the storage facility is given without any liability to The Buyer or The Buyers removal contractor. Buyers are strongly advised to use their own suitably qualified and insured contractors. The Collection date (s) and times are

Notice to Purchasers

14. Export of Lots - All goods purchased from Kivells auctions that are to be exported or removed from the United Kingdom will:

1. Be dealt with under the requirements set out of HM Customs and Excise publications:

a) VAT Notice 703 dated January 2021 – Goods exported from the UK from 1st January 2021.

2. Be Zero rated for VAT purposes subject to the following conditions being met.

a) The goods are removed from Great Britain within three months from the time of supply (the date of auction).

b) Kivells are provided with valid written evidence that the Lots have been removed from Great Britain within three months of the auction closure date. Unless and until the above requirements are fulfilled Purchasers will be charged VAT at the Great Britain standard rate (currently 20%). This will only be refunded if all requirements within the regulations are met within the specified time limits.

The Purchaser or their agent will be responsible for removing the Lots from Great Britain and will act as the importer of record and will be responsible for payment of any VAT, duties, goods and services tax, or other sales or import taxes or duties arising on the exportation of the goods from Great Britain and the importation of the goods into any country.

Neither Kivells or the Seller are responsible for any VAT, duties, goods and services tax, or other sales or import taxes or duties arising on the exportation of the lots from Great Britain and the importation of the lots into any country by the Purchaser or their agent.

Kivells recommend exporters visit <https://www.gov.uk/check-customs-declaration>

ANY PHYTOSANITARY CERTIFICATION AND DOCUMENTATION REQUIRED TO EXPORT LOTS FROM GREAT BRITAIN ARE STRICTLY THE RESPONSIBILITY OF THE PURCHASER.



ONLINE BIDDING NOW AVAILABLE

Simply Download the **MartEye App** from your phone App Store & Register.
Then press the **JOIN** button on the **Kivells Machinery Page**

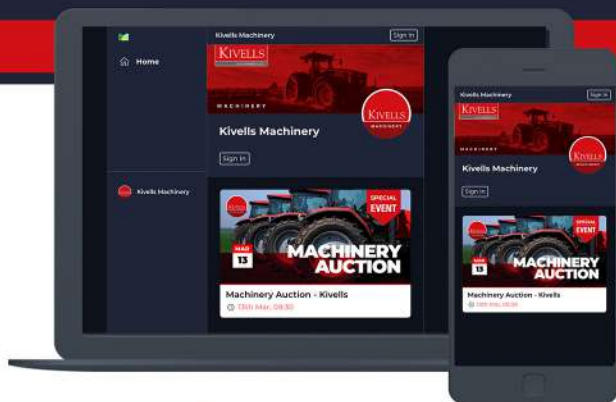
Your full details will be required for using online bidding and a trading reference **MUST** be provided prior to the sale day if you are not known to the Auctioneers. Applications made on the sale day for online bidding run the risk of not being approved. All buyers must ensure they have transport arranged prior to the Sale. All lots must be paid for prior to them leaving the Market.

Please Contact:
Kivells Machinery Team on 01409 253253.



ALSO AVAILABLE ON WEBSITE:

kivellsmachinery.marteye.ie



MartEye

2002 JCB Teletruk C/W Pallet Forks



1994 Kalmar DFQ 50 Side Loader



Lancer Boss 556 Diesel Side Loader



Still R70-25T LPG Fork Truck



Jungheinrich Electric 3 Wheel Fork Lift

2000 EFG DF 20. 1900KG Capacity



Jungheinrich 3 Wheel Fork Lift Truck

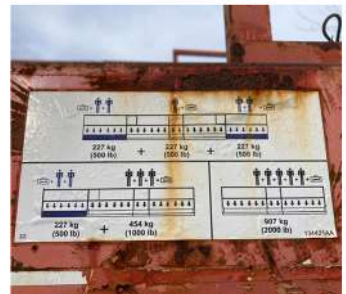
2004. EFG 216 Electric. 1550KG Capacity.



2006 Johnston 142A 101T Sweeper



Skyjack 9250 Rough Terrain Scissor Lift



Upright AB38 Electric Boom Lift Access Platform



2007 Dennison 13.6M Extendable Tri Axle Flat Trailer

C/w rear steering– can extend to 21M



Deso V3500 AdBlue Tank



Various Shipping Containers

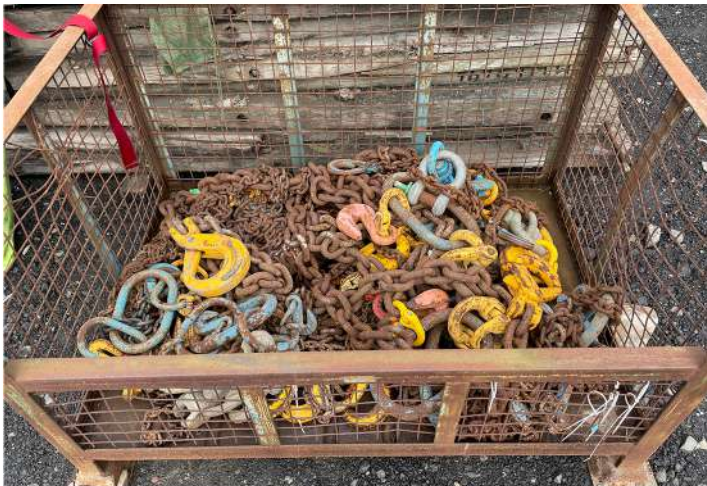


Assorted Lifting Chains & Cables



Assortment of Lifting Chains

Vendors comments: no paperwork/inspections available



Excel Optimum Centre Lathe

D330 x 1000. With DRO. 3 Phase.

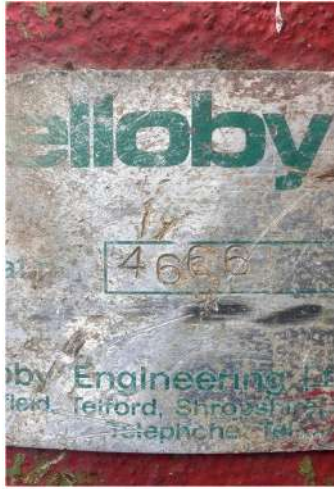


Fielden 1 Ton Capacity Forklift Jib Attachment



Lifting Davitt

SWL 1 Ton



Portable Workshop Compressor

Diesel driven. With Kubota Engine.



Condor Surface Grinder

3 Phase



Stenhøj 3 Phase 2 Post Ramp

2014. 5 Ton Capacity



OUTSIDE ENTRIES

2018 John Deere 6145R Direct Drive

68 reg. Only 2500hrs, 50K TLS, Premium Edition, air brakes, electric spools



2016 John Deere 6195M

16 reg. 5500hrs, TLS, auto track ready, vendor comments: very good tyres, serviced and ready to go



2016 John Deere 6215R Auto Power

16 reg. 7000hrs, 50K, full suspension, 10" screen, auto track with activation, front PTO & linkage, vendor comments: good tyres



2015 John Deere 6215R Auto Power

15 reg. 6250hrs, 50K, full suspension, command arm with 4 spools, front PTO & linkage, vendor comments: good tyres



John Deere 3036E Compact Tractor

C/w loader. Only 1000hrs, vendor comments: very tidy



2007 John Deere 5720

07 reg. 4800hrs, power quad gear box, vendor comments: tidy genuine tractor



2011 Renault Midlum 180 (11 Reg)

Approx 20' Flatbed. MOT July 2023. 7.5 GVW. 205,700kms



M&G Trailers Ltd

2000 YOM artic trailer FAC27Y model. Length: 13.530m & width: 2.550m with jost jack legs



M&G Trailers Ltd

2006 YOM artic trailer FFC27Y model. Length: 13.600m & width: 2.354m with jost jack leg



BVL V-Mix Feeder Twin Auger Machine



JD1350 8ft Trailed Moco 1992



Teagle 10ft Topper



Bomford 9ft Topper

Within electrical control centre



Amazone ZAM 2700 Broadcaster

Within electrical control centre



Kuhn Axis 40.1 W 2012 Broadcaster

24m spread width, S4 disc VXR+ Quantron E-2 control box, weigh cells with speed calibration for auto rate control, 5 bagger, mudguards & border reduction



3 x Tuffa Effluent Plastic Tanks

2300l Capacity, 3100mm Length x 2460mm Width



Enduramaxx 1,250 Litre Fluid CAT5 Type AB Air Gap Break Tank

Externally insulated. Dimensions of 1200 dia x 1700 h.
Constructed from MDPE polyethene



Enduramaxx 1,250 Litre Fluid CAT5 Type AB Air Gap Break Tank

Dimensions of 1200 dia x 1700 h. Constructed from MDPE polyethene



5 Person Heavy Duty Boot Wash Station

2660mm x 600mm x 1153mm; 3" waste outlet, 250mm tray depth, 25mm water connection inlet; fork pockets & lifting rings.
Missing: 2 foot grates, 1 hoses (plus connection) & 3 brush heads



5 Person Heavy Duty Boot Wash Station

2660mm x 600mm x 1153mm; 3" waste outlet, 250mm tray depth, 25mm water connection inlet; fork pockets & lifting rings.
Missing: 2 foot grates, 1 hoses (plus connection) & 3 brush heads



Falch Aqua Speed 1100w High Pressure Cleaner

With control panel and pressure washer hose



Falch Aqua Speed 1100w High Pressure Cleaner

With control panel and pressure washer hose



Falch Aqua Speed 1100w High Pressure Cleaner



Conquip Concrete Column Skip

With wheels, 500ltr capacity. Manufactured April 2016 WLL 1500kg. Model no: CS232-00500



Secatol AutoVid PB Crane Skip

500l CMU-SWL:1200kg



Ringler (Karcher-Model R1 400 W) Swaft and Liquid Vacuum

With tipping function. Power output 2.6kw



Ringler (Karcher-Model R1 400 W) Swaft and Liquid Vacuum

With tipping function. Power output 2.6kw



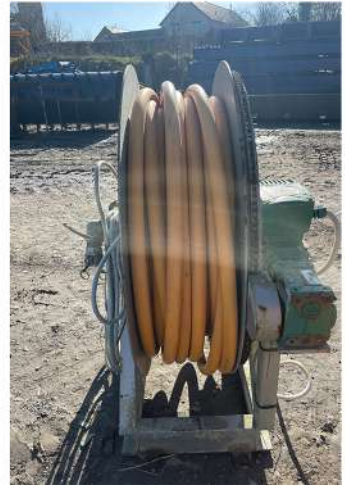
Hose Reel

With pump



Hose Reel

With pump & inlet and safety whiplash cable



3 Phase Hydraulic Power unit by Pearsons Hydraulics

Within electrical control centre



3 Phase Hydraulic Power Unit by Pearsons Hydraulics



4ft Grading Bucket

65mm pin width, 390mm distance between pins, 275mm pin length



2ft Digger Bucket

65mm pin width, 390mm distance between pins, 245mm pin lengths



Ripper Tooth Digger Attachment

60mm pin width, 410mm distance between pins, 305mm pin lengths



2ft Digger Bucket

65mm pin width, 390mm distance between pins, 245mm pin lengths



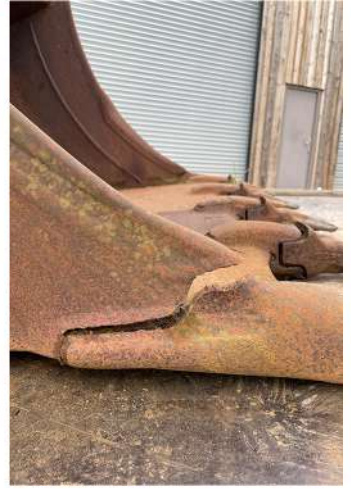
1ft Digger Bucket

30mm pin width, 90mm distance between pins, 104mm pin lengths



4ft Digger Bucket

65mm pin width, 410mm distance between pins, 230mm pin lengths -
vendors comments: crack on both sides near the teeth



2.5ft Digger Bucket

65mm pin width, 390mm distance between pins, 260mm pin lengths



1.5ft Digger Bucket

65mm pin width, 390mm distance between pins, 260mm pin lengths



3ft Digger Bucket

65mm pin width, 3425mm distance between pins, 255mm pin lengths



2.5ft Digger Bucket

50mm pin width, 290mm distance between pins, 195mm pin lengths



2ft Digger Bucket

50mm pin width, 290mm distance between pins, 195mm pin lengths



2.5ft Digger Bucket

65mm pin width, 400mm distance between pins, 250mm pin lengths



5ft Grading Digger Bucket

50mm pin width, 310mm distance between pins, 195mm pin lengths -
vendors comments: crack on left side



6.5ft Grading Digger Bucket

65mm pin width, 390mm distance between pins, 255mm pin lengths



Hydraulic Concrete Breaker Digger Attachment

60mm pin width, 300mm distance between pins, 230mm pin length



6.5ft Hydraulic Grader with Levelling Roller

50mm pin width, 300mm distance between pins, 185mm pin lengths



2 x Bag Lifter with Swivel Hooks



Stainless Steel Tank



Montracon Ltd

2007 YOM artic trailer. Length: 13.700m & width: 2.550m with jost jack legs



FLYGT Submersible Water Pump

Vendors comments: untested



DNB Breaker K50

Hydraulic concrete breaker digger attachment. 65mm pin width, 420mm distance between pins, 265mm pin length



Cab Roll Cage for 13T/14T Digger



2 x Chesterfield Swing Job Crane

Vendors comments: dissembled 100kgs SWL



Also available on the day...

- 2013 John Deere 6150R Direct Drive
- Workshop Drawer Unit
- Various Axle Stands
- Various Volley Buckets
- 110v Transformer
- Various Van Racking
- Large Dehumidifier
- Tracking Equipment
- Small Open Frame Generator
- Jump Start Packs- Transmission Jack High
- Transmission Jack Low
- Phase Converters
- Kaeser Air Dryers
- 300 Amp Diesel Powered Generator Set
- Various Ratchet Straps
- Safe
- Selection Of Filters
- Selection Of Fire Extinguisher Boxes
- Various 240V Strip Lights
- Selection Of Trailer Spares
- Selection Of Truck Spares
- Mag Drill
- Wheel Trolley
- Large Air Compressor
- Selection Of Aluminium Diesel Tanks
- Folding Access Tower On Wheels
- Linisher
- Tachograph Test Rollers
- Medium Size Battery Scissor Lift
- Small Mig Welder

Directions

Anchor Mills, Braunton Road, Barnstaple EX31 1JY

What3Words: shells.pages.calls

From M5

Travel Southwest and at junction 27 take the A361 exit to Barnstaple/Tiverton. At the roundabout, take the 3rd exit onto A361 signposted Barnstaple/Tiverton and continue to stay on the A361 for approximately 34 miles. At Portimore Roundabout take the 1st exit and stay on the A361, at Bishops Tawton Roundabout take the 2nd exit and stay on the A361. At the next Roundabout take the 2nd exit signposted "Barnstaple Ilfracombe". At the set of traffic lights continue straight on and proceed over the Taw Bridge. Continue straight at the next set of traffic lights then slight right onto Braunton Road at the last set of traffic lights and Nick Sampson's will be found on the right hand side.

From A39

Head Northeast from the A39 and at Heywood Roundabout, take the 2nd exit and stay on the A39. In approx 7 miles at Roundswell Roundabout take the 3rd exit and stay on the A39. In approximately 1 mile, slight left towards A361 signposted "Barnstaple Ilfracombe". At the set of traffic lights continue straight on and proceed over the Taw Bridge. Continue straight at the next set of traffic lights then slight right onto Braunton Road at the last set of traffic lights and Nick Sampson's will be found on the right hand side.

Kivells to the sale signs will be displayed on the day.

Directions

Anchor Mills, Braunton Road, Barnstaple EX31 1JY

What3Words: shells.pages.calls



*Keep an eye on what
we are up to here at Kivells*

ONLINE ONLY

KIVELLS MACHINERY

TIMED ONLINE SALE

APR

14

9am

APR

19

5pm

ENTRIES INCLUDE:



MartEye

KIVELLS
MACHINERY

Contact: Phil Cann 07881 922 788 | Office 01409 253253

KIVELLSMACHINERY.MARTEYE.IE

LIVE & ONLINE

MOORHILL FARM MACHINERY

Sale

APR

25

10:30am



on behalf of
Messrs G & R Askew

Moorhill Farm, Merton, Okehampton,
Devon, EX20 3DJ



ENTRIES INVITED

TRACTORS, FARM MACHINERY & IMPLEMENTS | KIVELLS.COM

KIVELLSMACHINERY.MARTEYE.IE

01409 253253 | MACHINERY@KIVELLS.COM | WHATSAPP: 07399 298995



KIVELLS

www.kivells.com

LIVE &
ONLINE

APR

29

9:30AM
ONLINE
BIDDING
FROM 11AM

HOLSWORTHY MARKET MAY MONTHLY MACHINERY SALE

**Being held a week prior due to King Charles' Coronation*

Get your entries in NOW for full
and free advertising!

WWW.KIVELLS.COM
MACHINERY@KIVELLS.COM
01409 253253



Bid Online

MartEye

Tradition Meets Technology

Our team of Machinery Auctioneers & Coordinators are at hand to sell your farm machinery whether it be on site, online or at one of our many collective auctions conducted throughout the South West and beyond.



KIVELLS

MACHINERY

Kivells Machinery & Equipment Sales
Online | On Site | On Market Premises



- 'Our expertise centres around the agricultural sector and as our clients have diversified so have we.
- We sell a huge range of machinery and equipment both into and out of the sector.
- Our online service offering is market leading and the feedback we have received both from our vendors and buyers bears that out. We are proud of our reputation and we are confident the choice of Marteye as Kivells online service partner will add to that.
- Our policy is to offer the best online capability combined with tried and tested traditional methods. We recognise the role auctions play in the agricultural community enabling people to gather and meet and the wellbeing benefits that brings. It is all about achieving the right balance in a safe environment and at the same time maximise the realisation for our vendors and ease of use for our buyers. We believe Kivells combination of market leading sales technology and respect for tradition does just that.'

Thinking of Selling? Feel free to contact me or any of our team for a confidential discussion. It is never too early to plan and prepare'.

David Kivell
Director

www.kivells.com | machinery@kivells.com

Holsworthy Livestock Market,
New Market Road, Holsworthy, Devon EX22 7FA
01409 253275

Exeter Livestock Centre,
Matford Park Road, Exeter, Devon EX2 8FD
01392 251261