

LIVE & ONLINE

The BIG one

ON-FARM

*Guest Auctioneer
from the USA!*

► EXTENSIVE ◀ CLASSIC & MODERN TRACTOR AND FARM MACHINERY SALE

Over 500 lots anticipated



JAN

28

10.30am

KIVELLS

MACHINERY

on behalf of Mr Richard Easterbrook
Hayne Farm, Bishops Tawton, Barnstaple, North Devon EX32 0DY

CONTACT: PHIL CANN 07881 922 788 | DAVID KIVELL 07899 960272 | OFFICE 01409 253253

KIVELLS.COM

Welcome

Welcome to The Big One

Richard is well known in North Devon being the son of the well-established & popular trader David Easterbrook who has bought & sold machinery from North Devon for 50 years.

Tractors & farm machinery have always been a part of Richard's life. He started from a young age working in the agricultural machinery trade alongside his father David.

Richard established Estrada in 2011 principally as an import/export business for trading in tractors & machinery initially in Spain. Over the years Richard has accumulated this collection alongside his day-to-day business.

The decision to reduce this lifetime collection follows Richard's decision to pursue further opportunities.

The collection will be found to be of very high interest to classic & rare tractor enthusiasts. Many of the sale items are in very good working order/restored quality.

The auctioneers highly recommend this sale to collectors, traders & enthusiasts alike.

Amongst the collection there are some very rare & in some cases one off tractors offered for sale. Several have been imported from the USA where Richard has built up plenty of contacts over the years including James McFadden who owns & operates his own auction house out of New York State. James will be attending the sale as a guest auctioneer.



Notice to Purchasers

Live and Online Auction Notice to Purchasers – Important Information

(Live and Online – Auctioneer streamed live, taking bids from both the attendees and made by bidders online with occasional commission and telephone bids. This can be done by 1) sound + image of lot + bids or 2) screening of auctioneer + sound + image of lot + bids. Online bidders may be bidding through their smartphone, tablet, laptop, or desktop computer and are able to see all bids on screen throughout the sale.)

Your Kivells Contacts: 01409 253253 / David Kivell 07899 960272 / Phil Cann 07881 922788

Date and Time of Sale: Saturday 28th January 2023 - 10:30am

Sale Location: Hayne Farm, Bishops Tawton, Barnstaple, North Devon, EX32 0DY – see map at back of catalogue.

Car Parking: Please note: car parking will be very limited at this sale. It is advised to arrive in good time at the farm.

1. Registration and Bidding Online – For this sale and your convenience Online Bidding is available on two platforms namely Marteye and BidSpotter/iBidder. **Kivells strongly advise that all interested parties register well ahead of the sale on their chosen platform. 'Late' registrants on the afternoon of Friday 27th January run the risk of not being approved in time.**

MartEye

Intending bidders must download the MartEye App from your phone App Store where you can register. Once you have downloaded the App you need to go on the Kivells Machinery Page and Sign in with your details and then click the Join button.

You can also access MartEye through kivellsmachinery.marteye.ie where you will be directed straight to our page and you will be required to Sign in with your details and then click the Join button. Once you have done this process your application will come through to us for approval.

BidSpotter/iBidder

- 1) Log in to your account/create an account if you do not already have one
- 2) Select the auction you wish to bid on under "Auctions" then "Current auctions"
- 3) Click "Sign up to bid"
- 4) Follow the steps to complete your sign up.

If you're already on the lot page, please click the small hammer icon next to the wording 'Register to Bid Online' in the tab to the right of the lot image.

Once completed and approved by Kivells you will be able to bid by clicking 'Join live auction'.

2. Registration and Live Bidding - All those attending the sale in person will be required to register in the Kivells Pay Office whereby you will obtain a Bidding Card. The Bidding Card will be used to bid on the sale items. No shouting will be necessary. We recommend those attending the sale on site arrive early.

3. Commission Bids - Kivells encourage the use of the Bidding Form which can be downloaded from www.kivells.com and phone bids may be possible - please contact the Auctioneers prior to the sale day.

Notice to Purchasers

4. Registration and Conditions of Sale - Kivells reserve the right to request additional information to include Driving License/Passport together with a Business Card/Utility Bills/Proof of Address/Business Letter Heading and the right to request a deposit ahead of any purchase or during sale proceedings. Kivells also reserve the right to deregister Buyers. It is strongly recommended that Bidders and Buyers read Kivells Standard Terms and Conditions of Sale ahead of the sale. Once you have registered you are confirming that you have read, agree with and will abide by those Conditions and these Notice to Purchasers. In registering you warrant that the information is correct, up to date on the sale closure date and you are over the age of 18. All registrations are provisional and subject to the approval by Kivells.

5. Lot Viewing – Viewing is permitted on the designated dates and times only unless previously agreed with the auctioneers.

Viewing Date(s) and Times are: From 10.30am to 3.00pm Thursday 26th and Friday 27th January and morning of sale from 8.30am.

6. Health & Safety - Kivells do not accept any liability for any damage or injury to persons, vehicles, plant, machinery, equipment or any lot not arising out of their negligence. When lots are located on The Sellers premises or 3rd party storage facilities then the aforementioned are responsible for Health & Safety. Any person entering the Saleground does so at their own risk, must comply with the requirements of any Health and Safety notices and guidelines and be appropriately dressed. All persons entering the premises are hereby given notice that there are significant risks due to the range and display of equipment, vehicle movement and the nature of the premises. Caution should be exercised and children must be fully supervised at all times. Permission from the Auctioneers / Seller or storage facility manager is required ahead of starting powered equipment or machinery. Any incidents or accidents on the premises should be reported to Kivells/ Seller or storage facility manager immediately. Kivells reserve the right for themselves and their Sellers and 3rd party storage facilities to refuse admission to any person or vehicle into the Saleground without giving reason. The Auctioneers also reserve the right for themselves and the Sellers and 3rd party storage facilities to halt any removal in the event there are concerns over the Buyer's or their contractor's capability and methods. The right extends to requesting confirmation of insurance cover, method statements and other assurances to include returnable deposits.

7. Descriptions of Lots - Kivells has limited access to lots prior to sale and therefore Buyers should satisfy themselves prior to making bids as to the condition of any Lot and should rely on their own judgement as to whether the Lot accords with its description. All Lots are sold with all faults and imperfections and errors of description. All statements are the Auctioneers or Sellers opinion and are not statements or representations of facts. You do not have to bid.

8. Payment - Currency GBP – Onsite Attendees - Day of Sale: Online Bidders - The auctioneers will either 1) contact you on day of sale for immediate payment or 2) will email an invoice on the first weekday following the close of the sale. With email payment is thereafter due no later than 24 hours from the time of forwarding the invoice. Payments will be due in full at the final bid price in respect of the lot sold plus all associated costs, Buyers premium and VAT. Payment will only be accepted from the successful purchaser or their duly appointed agent. Any payment is to be by a means approved by the Auctioneers and include the Buyers Commission and VAT. Our terms are strictly cash, Bank Transfer, Debit Card, NO Credit Cards are accepted. Our Bank Account details are: Sort Code 56-00-49 Account Number 32532822.

Notice to Purchasers

9. Payment in Cash - In order to comply with money laundering regulations The Auctioneers will not accept Cash payments above the maximum permitted at the time of sale. The maximum varies according to exchange rates and currently it is circa £7,000 - £9,000. Buyers are advised to check with the Auctioneers ahead of the sale.

10. Commission/Buyers Premium - All Lots will be subject to a Buyers Commission / Premium whether sold by auction, by private treaty or tender pre or post sale. VAT at the standard rate will be charged on all commissions. Buyers shall pay Commission to the Auctioneers at the following rates:

On Site & MartEye Buyers:

- 10% on any single lot up to and including £2,000
- 5% on any single lot over £2,000 to £10,000
- 4% on any single lot over £10,000 up to a maximum of £30,000
- Any single lot over £30,000 will be subject to a commission 'cap'. Please see below
 - £1,200 on any single lot over £30,000 and up to £40,000
 - £1,600 on any single lot over £40,000 and up to £50,000
 - £2,000 on any single lot over £50,000



iBidder/BidSpotter Buyers:

- 15% on any single lot up to and including £2,000
 - 8% on any single lot over £2,000
 - Please note: there will be NO commission cap
- Currency GBP



11. Risk - All lots remain at the risk of the Buyer from the fall of the hammer/closure of bidding for each lot and it is strongly advised that the Buyer effects insurance immediately.

12. Collection of Lots - All lots must be removed from the Saleground by 3pm Friday 3rd February 2023 sale day (unless other arrangements have been made with the seller or the auctioneers). Lots can only be removed once full payment has been made. The Buyer is responsible for the collection of their lots and any associated costs of transport. Assistance with loading by The Auctioneers, Seller or the storage facility is given without any liability to The Buyer or The Buyers removal contractor. Buyers are strongly advised to use their own suitably qualified and insured contractors. The collection date(s) and times are Day of Sale up to 5pm, or as announced by Kivells, Monday 30th January through to Friday 3rd February 10am to 3pm. **For Health and Safety reasons no consolidation or removal of lots will be permitted while the sale is ongoing unless permission is granted by Kivells.** Assistance with loading can be arranged with 24 hours notice.

13. Value Added Tax - Please be aware the majority of lots will be subject to VAT and therefore VAT will be charged in accordance to the current rate and added to all accounts and is applicable to the Commission/Buyers Premium. VAT status will be clearly stated in the Lot description.

14. Export of Lots - All goods purchased from Kivells auctions that are to be exported or removed from the United Kingdom will:

1. Be dealt with under the requirements set out of HM Customs and Excise publications:
 - a) VAT Notice 703 dated January 2021 – Goods exported from the UK from 1st January 2021.

Notice to Purchasers

2. Be Zero rated for VAT purposes subject to the following conditions being met.

- a) The goods are removed from Great Britain within three months from the time of supply (the date of auction).
- b) Kivells are provided with valid written evidence that the Lots have been removed from Great Britain within three months of the auction closure date. Unless and until the above requirements are fulfilled Purchasers will be charged VAT at the Great Britain standard rate (currently 20%). This will only be refunded if all requirements within the regulations are met within the specified time limits.

The Purchaser or their agent will be responsible for removing the Lots from Great Britain and will act as the importer of record and will be responsible for payment of any VAT, duties, goods and services tax, or other sales or import taxes or duties arising on the exportation of the goods from Great Britain and the importation of the goods into any country.

Neither Kivells or the Seller are responsible for any VAT, duties, goods and services tax, or other sales or import taxes or duties arising on the exportation of the lots from Great Britain and the importation of the lots into any country by the Purchaser or their agent. Kivells recommend exporters visit <https://www.gov.uk/check-customs-declaration>

ANY PHYTOSANITARY CERTIFICATION AND DOCUMENTATION REQUIRED TO EXPORT LOTS FROM GREAT BRITAIN ARE STRICTLY THE RESPONSIBILITY OF THE PURCHASER.

For this sale Phytosanitary Certification can be arranged and also assistance with export documentation and transport will be available by prior arrangement.

Deposits

Our Notice to Purchasers state:

4. Registration and Conditions of Sale - Kivells reserve the right to request additional information to include Driving License/Passport together with a Business Card/Utility Bills/Proof of Address/Business Letter Heading and the right to request a deposit ahead of any purchase or during sale proceedings. Kivells also reserve the right to deregister Buyers. It is strongly recommended that Bidders and Buyers read Kivells Standard Terms and Conditions of Sale ahead of the sale. Once you have registered you are confirming that you have read, agree with and will abide by those Conditions and these Notice to Purchasers. In registering you warrant that the information is correct, up to date on the sale closure date and you are over the age of 18. All registrations are provisional and subject to the approval by Kivells.

We advise the following:

To take part in this sale you may be required to pay an initial deposit in order to bid and this applies both to attendees on site and to online bidders. If you are unknown to Kivells or have not traded with Kivells for the last 12 months then you will be deemed to be a new buyer. All new buyers will be required to pay a deposit.

The minimum deposit payable is £500. In all other instances a 10% deposit of anticipated max bid amount is required. Should your bid exceed any anticipated bid spend then Kivells reserve the right to request additional funds during the sale event. Kivells are the sole arbiters as to the amount payable. Deposits must be paid in cleared funds at least 24 hours before the sale day by BACS transfer or Debit Card payment. Alternatively cash payments can be made on site, on the day of sale, subject to Anti-Money Laundering regulations.

A minimum deposit of £500 is required which allows a credit limit of £5,000 or 10% of the anticipated purchase price.

Deposits must be received in cleared funds via any of the following methods:

- Online payment
- Cash – acceptable on auction day – subject to Anti-Money Laundering Regulations
- Personal Debit Card – acceptable on auction day
- Bank Transfer – must be received before a bidder number can be assigned. Please see bank details below.

Kivells Bank details for the non-interest bearing client account are:

Kivells Ltd Client Account

Sort Code: 56-00-49

Account No: 32532822

In paying a deposit you are confirming you have read and agree with Kivells Terms and Conditions.

Successful Buyers - The deposit will be taken as part of the total purchase price.

Unsuccessful Bidders – The full deposit will be returned within 10 days to the bank account details you provide below.

Bank Name:

Account Holders Name:

Sort Code:

Account Number:

Note the deposit will only be returned to the bank account from which the monies were received.

ONLINE BIDDING NOW AVAILABLE

Simply Download the **MartEye App** from your phone App Store & Register.
Then press the **JOIN** button on the **Kivells Machinery Page**

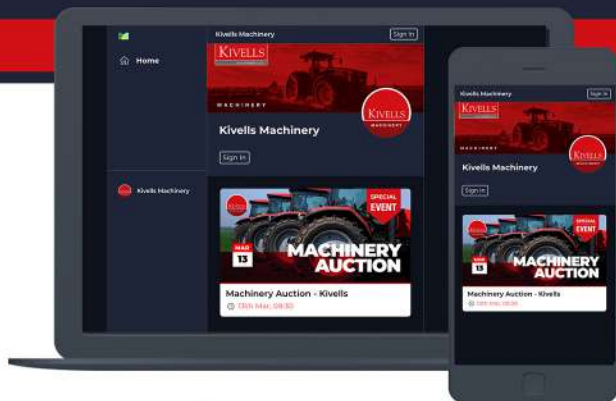
Your full details will be required for using online bidding and a trading reference **MUST** be provided prior to the sale day if you are not known to the Auctioneers. Applications made on the sale day for online bidding run the risk of not being approved. All buyers must ensure they have transport arranged prior to the Sale. All lots must be paid for prior to them leaving the Market.

Please Contact:
Kivells Machinery Team on 01409 253253.



ALSO AVAILABLE ON WEBSITE:

kivellsmachinery.marteye.ie



MartEye

BidSpotter & i-bidder

Set-Up

BidSpotter
.co.uk

i-bidder.com

- 1) Log in to your account/create an account if you do not already have one
- 2) Select the auction you wish to bid on under "Auctions" then "Current auctions"
- 3) Click "Sign up to bid"
- 4) Follow the steps to complete your sign up.

If you're already on the lot page, please click the small hammer icon next to the wording 'Register to Bid Online' in the tab to the right of the lot image.

Once completed and approved by Kivells you will be able to bid by clicking 'Join Live Auction'.

BidSpotter.co.uk
i-bidder.com

Ford TW-5 Force II

Model: TW-5 FORCE II
Hours: 6114
Year: 1990
Serial No: A925068

TACHO WORKING. 3 DOUBLE ACTING SPOOLS,
AIR CONDITIONED CAB, PAVT REAR WHEELS.
460/85R38 @ 80% APPROX. V5 APPLIED FOR.



Ford TW-25 Force II

Model: TW-25 FORCE II
Year: 1992
Serial No: A924020

4WD, OPEN OPERATORS STATION WITH ROPS, 4 DOUBLE
ACTING SPOOLS, RACK & PINION REAR AXLE, PAVT REAR
WHEELS WITH WEIGHTS. 520/70R38 TYRES.
V5 APPLIED FOR.



Ford TW-35 FORCE II

Model: TW-35 FORCE II
Registration: C860 XRT
Year: 1986 Hours: 1574
Serial No: A916354

TACHO NOT WORKING. IMPORTED FROM USA. 4WD,
DUAL POWER, AIR CON, 3 DOUBLE ACTING SPOOLS,
PAVT WHEELS, FRONT & WHEEL WEIGHTS.
18.4R38 & 11.2-24 TYRES.



Ford 4000

Model: 4000
Hours: 6464
Serial No: B923181

CAB WITH DOORS, PICK-UP HITCH. 13.6R38 TYRES.
WITH POWER LOADER & BUCKET.



Ford 5000

Model: 5000
Year: 1975 Hours: 3090
Registration: LKX 1P
Serial No: B953472

TACHO WORKING. CAB WITH DOORS. 16.9R34
TYRES.



Ford 6000

Model: 6000
Year: 1961
Hours: 2775
Serial No: 54636

IMPORTED FROM USA. TACHO NOT WORKING.
SELECTOMATIC, LINKAGE, PTO & DRAWBAR.
14.9-38 TYRES.



Ford 6640

Model: 6640
Year: 1995
Hours: 5519
Serial No: BE02965

TACHO WORKING. POWERSTAR SL, 4WD, DUAL POWER,
2 DOUBLE ACTING SPOOLS, PICK-UP HITCH. 13.6R38 &
320/85R24 TYRES. V5 APPLIED FOR.



Ford 7000

Model: 7000 Year: 1975
Hours: 2865
Registration: ORR 283P
Serial No: B261433

TACHO NOT WORKING. CAB WITH DOORS &
HEATER, 1 DOUBLE ACTING SPOOL VALVE, REAR
WHEEL WEIGHTS. 460/85R34 TYRES.



Ford 7000

Model: 7000
Year: 1973
Registration: YND855L
Hours: 7557

TACHO NOT WORKING. SCHINDLER 4WD
CONVERSION, ROLLMASTA CAB, 2 DOUBLE
ACTING SPOOLS. 18.4-34 & 13.6-28 TYRES.



Ford 7000

Model: 7000 Year: 1974
Hours: 6975
Registration: MCY 452M
Serial No: B233615

TACHO NOT WORKING. OPEN OPERATOR
STATION, 1 DOUBLE ACTING VALVE. 18.4-34
TYRES.



Ford 7000 HC

Model: 7000 HC
Year: 1971
Registration: GAM 533J
Serial No: C476142

HIGH CLEARANCE MODEL. OPEN OPERATOR
STATION, LINKAGE, PTO, DRAWBAR, PAVT
WHEELS. 18.4-38 TYRES.



Ford 7840

Model: 7840
Year: 1994
Hours: 2849
Serial No: BD86922

TACHO WORKING. POWERSTAR SL, 4WD, DUAL POWER,
2 DOUBLE ACTING SPOOLS, PICK-UP HITCH. 18.4R38 &
14.9R28 GOODYEAR TYRES.
V5 APPLIED FOR.



Ford County 4000 Four

Model: 4000 FOUR
Year: 1973
Serial No: 28680

COUNTY CONVERSION. DUNCAN CAB WITH DOORS,
PICK-UP HITCH (NO LIFT RODS). V5 APPLIED FOR.



Ford County 4600 Four

Model: 4600 FOUR
Year: 1977
Hours: 4420
Serial No: 35572

LAMBOURNE CAB, NO DOORS. NON RUNNER.
V5 APPLIED FOR.



Fordson Dexta Crawler

Model: Dexta

CRAWLER. MAILAM CONVERSION, PERKINS
ENGINE.



Fordson Major 4x4

Model: Major 4x4

4WD SELENE FRONT AXLE CONVERSION 333179G,
FITTED WITH A REDUCTION GEAR BOX, NO REAR
LINKAGE.



Fordson Super Major

Model: Super Major
Hours: 176

TACHO NOT WORKING. 4WD SELENE FRONT AXLE
CONVERSION 026106, ENGINE NO:157785 FITTED
WITH REDUCTION GEAR BOX & REAR LINKAGE.



Fordson Super Major

Model: Super Major
Hours: 5576

ROADLESS 4WD CONVERSION, FITTED WITH
REAR LINKAGE. 16.9-30 BKT (NEW) & 11.2-24
TYRES.



Eicher Puma

Year: 1962
Registration: APP 824B
Serial No: 81916

TWIN CYLINDER DIESEL. COMES WITH 2
FURROW PLOUGH & ROTAVATOR.



Lamborghini 956

Model: 956
Hours: 9030

TACHO NOT WORKING. OPEN OPERATOR STATION
WITH ROPS & CANOPY. 4WD, 2 DOUBLE ACTING
SPOOLS, 460/85R34 & 420/85R24 TYRES.



Massey Ferguson 35

Model: 35
Hours: 3112

TACHO WORKING. 4 CYLINDER, CAB WITH
DOORS.



Massey Ferguson 165

Model: 165
Hours: 5276
Registration: WOU 198J
Serial No: 165 59191

TACHO NOT WORKING. CAB WITH DOORS,
PICK-UP HITCH. 14.9-28 TYRES.



Massey Ferguson 165

Model: 165
Hours: 7417
Serial No: 165154915MH

CAB WITH DOORS & HEATER, FWD 4WD
CONVERSION, PICK-UP HITCH, FRONT BLADE &
GRILLE GUARD. 12.4-36 & 12.4-24 TYRES.



Massey Ferguson 165

Model: 165
Hours: 6104
Serial No: 165 152150 PFA

TACHO WORKING, MULTI POWER, CAB WITH
DOORS, PICK-UP HITCH.



Massey Ferguson 165

Model: 165
Hours: 3009
Serial No: F553430

TACHO NOT WORKING. MULTI-POWER, PICK-UP
HITCH, 2 DOUBLE ACTING SPOOLS, GRILLE
GUARD. 12.4-36 TYRES. V5 APPLIED FOR.



Massey Ferguson 165

Model: 165
Hours: 4897
Serial No: 165173203MH

TACHO WORKING. CAB WITH DOORS, FWD 4WD
CONVERSION, 16.9/14-30 & 11.2R24 TYRES. V5
APPLIED FOR.



Massey Ferguson 240

Model: 240
Year: 2022
Hours: 7
Serial No: A43273/45/22

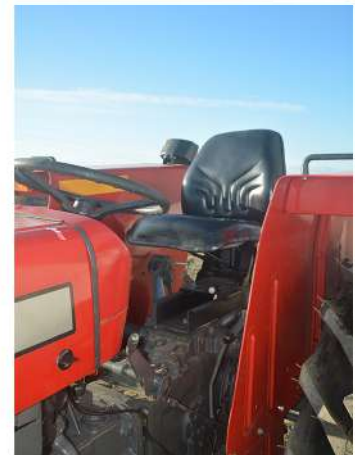
TACHO WORKING. OPEN OPERATOR STATION,
12.4-28 - NEW. WITH FRONT WEIGHTS.



Massey Ferguson 240

Model: 240
Year: 2022
Hours: 4
Serial No: A43260/22/22

TACHO WORKING. OPEN OPERATORS STATION.
12.4-28 - NEW.



Massey Ferguson 255

Model: 255
Hours: 3286
Serial No: 9A 308232

TACHO WORKING. OPEN OPERATOR STATION,
DOWN SWEEP EXHAUST, 1 DOUBLE ACTING
SPOOL, PAVT WHEELS. 16.9-28 TYRES.



Massey Ferguson 285

Model: 285 Year: 1978
Registration: YBA 5845
Hours: 1652
Serial No: 2858RH204069

TACHO WORKING. 4WD, CAB WITH DOORS &
HEATER, 2 DOUBLE ACTING SPOOLS, PICK-UP HITCH,
PAVT WHEELS. 16.9-34 & 11.2/10-24 TYRES.



Massey Ferguson 355

Model: 355 Year: 1987
Registration: E851 WOL
Hours: 3936
Serial No: 5309V3128

TACHO NOT WORKING. CAB WITH DOORS, 2
DOUBLE ACTING SPOOLS, PICK-UP HITCH.



Massey Ferguson 362

Model: 362
Year: 1992 Hours: 6678
Registration: J686 UNY
Serial No: 165154915MH

4WD, 8x8 TRANSMISSION WITH SHUTTLE, 2
DOUBLE ACTING SPOOLS, PICK-UP HITCH. 14.9R28
& 280/85R20 TYRES.



Massey Ferguson 675

Model: 675
Hours: 5570
Serial No: L308011

TACHO NOT WORKING. 4WD, TURBOCHARGED, PICK-UP
HITCH, TRAILER BRAKE VALVE, 2 DOUBLE ACTING
SPOOLS, 16.9R34 & 13.6R24.
V5 APPLIED FOR.



Massey Ferguson 3305

Model: 3305
Hours: 3342
Serial No: 3305 82059 A

TACHO WORKING. BASED ON MF 165 SKID UNIT.
16.9/14-28 TYRES. WITH BUCKETS FOR LOADER
& BACKHOE.



Deutz Fahr Agrostar

Model: Agrostar 6.08
Year: 1995 Hours: 6128
Registration: M476 AEX
Serial No: 78377506

TACHO WORKING. 40KPH 36x18 TRANSMISSION,
4WD, 2 DOUBLE ACTING SPOOLS, PICK-UP HITCH,
16.9R38 & 14.9R24 TYRES.



Deutz Fahr 6.05 C/W Front Loader

Model: 6.05
Year: 1991 Hours: 6857
Registration: H991 WHH
Serial No: 74499513

4WD, 2 DOUBLE ACTING SPOOLS, PICK-UP
HITCH, 18.4R38 & 500/60-26 TYRES. WITH
QUICKE 580 SELF LEVELLING LOADER.



John Deere 1140

Model: 1140
Hours: 3487
Registration: A141 OTR
Serial No: 467408

TACHO WORKING. SEKURA CAB, HI-LO, 1 DOUBLE ACTING SPOOL, PICK-UP HITCH. 18.4/15-26 TYRES.



John Deere 2650

Model: 2650
Year: 1993 Hours: 4
Registration: L785 CFJ
Serial No: L02650U774090

4WD, SG2 CAB, HI LIFT, 2 DOUBLE ACTING SPOOLS, NEW 420/85R34 & 340/85R24 MITAS. JUST HAD FULL NUT & BOLT RESTORATION & CLOCK RESET.



John Deere 5020

Model: 5020
Year: 1970 Hours: 6948
Registration: XHH 193H
Serial No: T313R027182R

IMPORTED FROM USA. TACHO NOT WORKING.
HYDROSTATIC 4WD, OPEN OPERATOR STATION, 2
DOUBLE ACTING SPOOLS, LINKAGE, PTO, DRAWBAR.



John Deere 5020

Model: 5020
Year: 1969
Hours: 2626
Serial No: T313R017170R

IMPORTED FROM USA. TACHO WORKING.
TURBOCHARGED, OPEN OPERATOR STATION, 2 DOUBLE
ACTING SPOOLS, LINKAGE, PTO, DRWABAR.
18.4-38 TYRES.



John Deere 5020

Model: 5020

Year 1967 Hours: 6057

Registration: KNT 126E

Serial No: T313R 017699R

IMPORTED FROM USA. TACHO WORKING. FITTED WITH 6030 ENGINE, CAB WITH DOORS & AIR CON, 2 DOUBLE ACTING SPOOLS, LINKAGE, PTO, DRAWBAR. WITH DUAL WHEELS.



John Deere 5020

Model: 5020

Year: 1970 Hours: 55

Registration: XHH 193H

Serial No: T313R 017164R

IMPORTED FROM USA. CAB. 2 DOUBLE ACTING SPOOLS, PTO, DRAWBAR, WHEEL WEIGHTS. 24.5-32



John Deere 620

Model: 620
Hours: 992
Serial No: 6203702

IMPORTED FROM USA. PETROL, POWER
STEERING, LINKAGE, PTO, DRAWBAR. 14.9/13-38
TYRES.



International 232

Model: 232
Hours: 372

TACHO NOT WORKING. 2WD, FITTED WITH A
KOMATSU ENGINE. 9.5/9-24 TYRES. WITH FINGER
BAR MOWER



International 274

Model: 274
Hours: 1596

TACHO WORKING. 2WD FITTED WITH A
KOMATSU ENGINE. WITH REAR & CENTRAL
CULTIVATOR/PLANTER



International 434

Model: 434
Year: 1968 Hours: 3948
Registration: JES 661F
Serial No: B812

TACHO NOT WORKING. NARROW TREAD, OPEN
OPERATOR STATION, DOWN SWEEP EXHAUST, 1 SINGLE
ACTING SPOOL, LINKAGE PTO. 11.2-28 TYRES.



International 574

Model: 574
Hours: 5136
Serial No: 2430009B111412

TACHO NOT WORKING. 78 HP MODEL, CAB WITH
DOORS, PICK-UP HITCH. 380/85R30 TYRES.



International 1066

Model: 1066 Farmall
Year: 1965
Hours: 8612
Serial No: 2610154U013468

IMPORTED FROM USA. TACHO WORKING, OPEN
OPERATOR STATION WITH ROPS & CANOPY, TORQUE
AMPLIFIER, 2 DOUBLE ACTING SPOOLS, LINKAGE, PTO,
DRAWBAR, 18.4-38 TYRES. WITH WHEEL WEIGHTS.



Case IH 795

Model: 795
Hours: 6148

TACHO WORKING. 8x8 TRANSMISSION WITH SHUTTLE, 1
DOUBLE ACTING SPOOL, PICK-UP HITCH. 13.6-38 TYRES.
READY TO TAKE HOWARD LOADER.



Case IH 4210 LP

Model: 4210 LP
Year: 1997 Hours: 5532
Registration: P682 YUG
Serial No: 4210RLPJJE0928892

2WD, TACHO WORKING. 8x4 TRANSMISSION, 2
DOUBLE ACTING SPOOLS, PICK-UP HITCH,
13.6-36 REAR TYRES.



Case D

Model: D
Year: 1940
Registration: MXS 506
Serial No: 4400721

NON RUNNER. ENGINE NOT SIEZED. PTO & DRAWBAR.



Minneapolis Moline

Model: 5 STAR
Hours: 5500
Serial No: 11001965

IMPORTED FROM USA. LPG ENGINE, 1 DOUBLE ACTING SPOOL, PTO, DRAWBAR. 15.5-38 TYRES.



Fiat 1380 DT

Model: 1380 DT
Registration: YBJ 863X
Hours: 9953 Year: 1982
Serial No: 1380DT/24736508

TACHO WORKING. 4WD, 3 DOUBLE ACTING SPOOLS,
PICK-UP HITCH, 20.8-38 & 16.9-28 TYRES, PAVT WHEELS.
WITH TRIMA 480 PROFESSIONAL LOADER.



Allis Chalmers AC7000

Model: AC7000
Year: 1985
Hours: 6218
Serial No: 5841903126

IMPORTED FROM USA. TACHO WORKING. 2WD, POWER
SHIFT, 2 DOUBLE ACTING SPOOLS, LINKAGE, PTO,
DRAWBAR. COMPLETELY ORIGINAL CONDITION.



Allis Chalmers Crawler

Model: M4
Year: EST 1935

ALLIS CHALMERS MODEL M 4 CYLINDER ON
NARROW GAUGE TRACKS



Oliver Crawler

Model: OC3-60
Year: 1953
Serial No: 3500942

PETROL/PARAFFIN CRAWLER



Challenger Rogator RG 655C

Model: RG 655C
Year: 2015 Hours: 5538
Registration: AY15 CYX
Serial No: AGCC0655KFW001043

36 METRE ALUMINIUM BOOMS, 6500 LITRE TANK,
420/95R50 MICHELIN TYRES. AGCO/TOPCON
GUIDANCE SYSTEM.



Challenger Rogator RG 645C

Model: RG645C
Year: 2014 Hours: 5800
Registration: AY14 BTE
Serial No: AGCC0645LEW001051

36 METRE CHAFER BOOMS, 6500 LITRE TANK.
380/90R46 MICHELIN TYRES. AGCO/TOPCON
GUIDANCE SYSTEM.



Manitou 630

Model: MLT 630
Year: 2003 Hours: 6600
Registration: WX53 ZFA
Serial No: 1189360

TACHO NOT WORKING. MANITOU HYDRAULIC
LOCKING CARRIAGE. 460/70R24 TYRES.



JCB 540-140

Model: 540-140
Year: 2018
Hours: 1100
Serial No: JCB5A87GLJ2725069

TACHO WORKING. CONSTRUCTION SPEC. 4 SPEED
POWER SHIFT TRANSMISSION, AIR CON, SUPPORT LEGS,
MANUAL LOCKING Q-FIT CARRIAGE. 15.5-15 TYRES.



Volvo Lorry and Faymonville Trailer LL

Model: FH 500 Year: 2015
Registration: KX15 NYO
Mileage: 690,000 kms
Serial No: YAMT13XX3L0105443

6x2 WITH MID-LIFT, GLOBETROTTER XL, SINGLE
SLEEPER. TRI AXLE 44' LOW LOADER. EXTENDABLE,
ALLOY RAMPS. 235/75R17.5 TYRES.



Austin Lorry

Model: FK100
Year: 1965 Miles: 51,125
Registration: CPR 845C
Serial No: FFK100/240014

7.5 T FLAT BED LORRY , 6 CYLINDER PETROL ENGINE.



Range Rover Sport V8

Model: Sport V8
Year: 2016
Registration: 0Y16 YUX
Mileage: 45,000

AUTOBIOGRAPHY. 3.6 LITRE V8 DIESEL. 45,000 MILES, FULL LAND ROVER SERVICE HISTORY.



McCauley A2GP16

Model: A2GP16
Year: 2021
Serial No:
SA9A2GP16MT118650

16 TON DUMP TRAILER, HYDRAULIC DROP DOWN DOOR, SPRUNG DRAWBAR, TANDEM COMMERCIAL AXLES, AIR & HYDRAULIC COMMERCIAL BRAKES. 560/60R22.5 TYRES.



Standen R400/240

Model: R400/240
Year: 2008

6 METRE POTATO BED FORMER. RATED TO
400HP.



Amazone Cenius 3002

Model: CENIUS 3002
Year: 2013
Serial No: CXS0001839

3 METRE ONE PASS CULTIVATOR WITH AUTO
RESET LEGS, INTERMEDIATE DISCS & WEDGE
RING PACKER ROLLER.



Kverneland LO 85

Model: LO 85

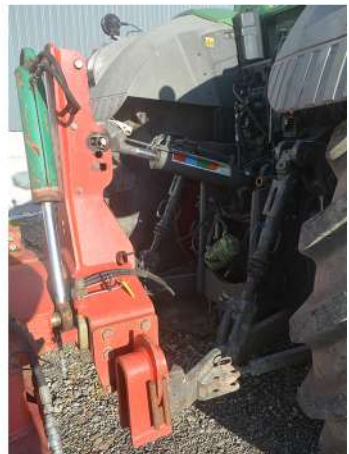
7 FURROW REVERSIBLE PLOUGH WITH
HYDRAULIC VARI-WIDTH, PRESS ARM, DOUBLE
DEPTH WHEELS, SKIMMERS & REAR DISCS.



Kverneland LD 85

Model: LD 85

5 FURROW REVERSIBLE PLOUGH WITH PRESS
ARM, SKIMMERS & DEPTH WHEEL.



Kverneland LB 100

Model: LB 100
Year: 2014
Serial No: KKL006569

6 FURROW REVERSIBLE PLOUGH WITH SLATTED BODIES, HYDRAULIC VARI-WIDTH, DEPTH WHEEL, SKIMMERS & REAR DISCS.



Vaderstad REXIUS 820

Model: REXIUS 820
Year: 1998

8.2 METRE CAMBRIDGE ROLLERS WITH SHATTER BOARDS. TANDEM BOGEY AXLES & 400/60-15.5 TYRES.



Grimme GH8

Model: GH8
Year: 2018

8 ROW HYDRAULIC FOLDING RIDGING HILLER.
UNUSED.



Grimme GB330

Model: GB330
Year: 2013

TRAILED 3 ROW POTATO PLANTER WITH
420mm SPACING & 3 TON HOPPER



Kubota K008-3

Model: K008-3
Year: 2010
Hours: 1817
Serial Number: 20784

TACHO WORKING. OPEN OPERATOR STATION.
WITH 2 BUCKETS



Kemper 4500

Model: 4500

TO FIT NEW HOLLAND FX FORAGER. WITH 2
SPEED GEARBOX.



Kuhn Vision

Model: Vision
Year: 2011
Serial No: B 1013

ATV MOUNTED SPRAYER WITH 50 LITRE TANK, 2
METRE BOOM & 12 VOLT PUMP. UNUSED.



Kuhn Ellis

Model: Ellis
Year: 2013
Serial No: D 105B

UTV MOUNTED SPRAYER WITH 300 LITRE TANK
& ENGINE DRIVEN PUMP. COMES WITH SUBARU
PETROL ENGINE. UNUSED.



Kuhn Polypul 200

Model: POLYPUL 200
Year: 2011
Serial No: B 1030

POLYTUNNEL SPRAYER WITH 200 LITRE TANK &
ELECTRIC DRIVEN PUMP. UNUSED.



Kuhn Actis

Model: Actis
Year: 2013
Serial No: D 0187

COMPACT TRACTOR SPRAYER WITH 300 LITRE
TANK & 6 METRE MANUAL FOLDING BOOMS.
UNUSED.



Kuhn Actis

Model: Actis
Year: 2017
Serial No: H 0335

COMPACT TRACTOR SPRAYER WITH 300 LITRE
TANK, HANDLANCE WITH EXTENDABLE HOSE,
6 METRE MANUAL FOLDING BOOMS. UNUSED.



Niubo DSH210C

Model: DSH210C
Year: 2019
Serial No: 1910585

2.1 METRE REAR MOUNTED FORESTRY TOPPER
WITH HEAVY DUTY CLUTCH & RATED TO 125HP.
UNUSED.



Niubo TTK220

Model: TTK220
Year: 2019

2.2 METRE REAR MOUNTED FORESTRY
MULCHER WITH HEAVY DUTY CLUTCH & RATED
TO 160HP.



Niubo TFS320

Model: TFS320
Year: 2017
Serial No: 1712430

3.2 METRE REAR MOUNTED FLAIL MOWER
WITH HAMMER FLAILS & REAR ROLLER.



John Deere 350

Model: 350
Serial No: 40668E

REAR MOUNTED FINGER BAR MOWER.



Lely 855 Rake

Model: 855

LELY HIBISCUS 855 CD



We are also anticipating circa, 200 lots of new & used wheels, tyres, weights & various tractor parts and accessories.



Bidding Form

Buyer No:

Name: Mr / Mrs / Miss / Ms: Initials:

Address:

..... Postcode:

Telephone: Mobile:

Email address:

To receive information by post/email regarding forthcoming sales please tick in the box ☐

I confirm I fully understand my responsibilities, have read Kivells Terms and Conditions and Notice to Purchasers to include the following clause. I also have read, agree with and will comply with points 1-6 below. I will pay Kivells in full if my bids are successful.

Aforementioned clause: **Descriptions of lots** – Kivells has limited access to lots prior to sale and therefore Buyers should satisfy themselves prior to making bids as to the condition of any lots and should rely on their own judgement as to whether the lot accords with its description. All lots are sold with all faults and imperfections and errors of description. All statements are the Auctioneers or Sellers opinion and are not statements or representations of facts. You do not have to bid.

Signed:

1. Commission bids will be accepted and executed as cheaply as permitted by other bids and reserves, if any;
2. Bids should be consistent with the normal increments at the relevant level;
3. The prices given shall be the hammer prices. All purchasers and sales will comply to the notices and Conditions of Sale.
All lots are subject to a 10% Buyers Premium up to & including £2,000 on any single lot, 5% on any single lot over £2,000 - £10,000, 4% on any single lot over £10,000 and up to a maximum of £30,000 and any single lot over £30,000 will be subject to a commission 'cap'. Please note: + VAT is charged on all commission;
4. In certain cases it may not be possible to execute bids that are received after the beginning of the auction.
5. All bids are at the purchasers risk and the auctioneers accept no liability to intending purchasers in respect of commission to secure any lot at a stated price;
6. Completion of this form does not create any legal relationship between the intending purchaser and the auctioneer unless the bid is successful.
7. Any personal data you provide to us will be handled in accordance with our Privacy Policy available on our website www.kivells.com – a copy of our Privacy Policy is available on request.

Lot No	Description	Maximum Bid

Hauliers

We have listed below a number of haulage companies.

It is the responsibility of the buyers to make their own arrangements to remove their lots and contract with their chosen haulier.

PR Weldhen: Newquay - 01637 880087

A&B Haulage: Barnstaple - 01271 882006

A Mansbridge: Salisbury - 07798 924279

J Jones: Winkleigh - 07977 268113

Nick Sampson (heavy): Barnstaple - 01271 376701 / 07803 792897

Bob Davies Transport: Taunton - 07977 5014506

DJM (Cornwall) Ltd: Plymouth - 07768 061438

B&G Haulage: Saltash - 01579 350622

Denby Transport: Lincoln - 01522 503903

Creechwood Ltd: Holsworthy - 01409 259848

Colin W. Parker Haulage Co: Cumbria - 015396 22127 / 07785 521858

Independent Customs & Logistics Ltd: Ireland - (094) 901 4077

Dave Hockin: Shebbear - 07811 119452

Accommodation

Travelodge: Barnstaple - 0871 984 6345

Barnstaple Hotel: Barnstaple - 01271 376221

Premier Inn: Barnstaple - 0333 777 3681

The Park Hotel: Barnstaple - 01271 372166

The Rising Sun Hotel: Umberleigh - 01769 560447

The Bell Inn: Chittlehampton - 01769 540368

Directions

**Hayne Farm, Bishops Tawton, Barnstaple, North Devon
EX32 0DY**

What3Words: crackled.served.flagging

Coming from the A361:

Head North West on the A361 and follow the signs towards 'Barnstaple'. At the Northgate Inn roundabout, take the 3rd exit and stay on A361 for approximately 7 miles, at the next roundabout, take the 1st exit and stay on the A361 for a further mile, at the Portmore Roundabout, take the 1st exit and stay on the A361 for ½ mile until you get to the Bishops Tawton Roundabout. Take the 1st exit onto Bishops Tawton Road/A377, in just over 1 mile turn left signposted 'Kivells to the Sale Sign'. Follow this road for approx. 1.5 miles and turn right at 'Clements Lane'. Follow signs for Car Parking.

Coming from the A377:

Head North West on the A377 and follow signs towards 'Bishops Tawton/Barnstaple'. As you reach Umberleigh continue on the A377 for approximately 5 miles, turn right at Bishops Tawton signposted 'Kivells to the Sale Sign' and continue on this road for approximately 1.5 miles. Turn right at 'Clements Lane' and follow the signs for Car Parking.

Coming from the A39:

Head East on the A39 and follow signs for 'Barnstaple'. At Roundswell Roundabout, take the 3rd exit and stay on the A39 for approximately 1 mile. At the next roundabout take the 2nd exit onto the A361 for approximately half a mile. At Bishops Tawton Roundabout, take the 3rd exit onto Bishops Tawton/A377 and continue through the village for approximately 1 mile. Turn left signposted 'Kivells to the Sale Sign' and continue on this road for approximately 1.5 miles and turn right at 'Clements Lane'. Follow signs for Car Parking.

'Kivells to the Sale Signs' will be displayed on the day.

Directions



Your Notes

Your Notes

↓ Keep an eye on what
we are up to here at Kivells

Tradition Meets Technology

Our team of Machinery Auctioneers & Coordinators are at hand to sell your farm machinery whether it be on site, online or at one of our many collective auctions conducted throughout the South West and beyond.



KIVELLS

MACHINERY

**Kivells Machinery & Equipment Sales
Online | On Site | On Market Premises**



- 'Our expertise centres around the agricultural sector and as our clients have diversified so have we.
- We sell a huge range of machinery and equipment both into and out of the sector.
- Our online service offering is market leading and the feedback we have received both from our vendors and buyers bears that out. We are proud of our reputation and we are confident the choice of Marteye as Kivells online service partner will add to that.
- Our policy is to offer the best online capability combined with tried and tested traditional methods. We recognise the role auctions play in the agricultural community enabling people to gather and meet and the wellbeing benefits that brings. It is all about achieving the right balance in a safe environment and at the same time maximise the realisation for our vendors and ease of use for our buyers. We believe Kivells combination of market leading sales technology and respect for tradition does just that.'

Thinking of Selling? Feel free to contact me or any of our team for a confidential discussion. It is never too early to plan and prepare'.

David Kivell
Director

www.kivells.com | machinery@kivells.com

Holworthy Livestock Market,
New Market Road, Holworthy, Devon EX22 7FA
01409 253275

Exeter Livestock Centre,
Matford Park Road, Exeter, Devon EX2 8FD
01392 251261