

LIVE & ONLINE

MACHINERY

On Farm Dispersal



MartEye™

SEPT

19

10:30am



On behalf of
AD Bulled & Sons

Buckingham Leary, Filleigh, Barnstaple EX32 0SB

DISPERSAL SALE OF TRACTORS, MACHINERY, IMPLEMENTS & EFFECTS

KIVELLSMACHINERY.MARTEYE.IE

01409 253253 | MACHINERY@KIVELLS.COM | WWW.KIVELLS.COM

Foreword

This important dispersal sale follows the owner's decision to disperse the machinery and equipment used at Buckingham's Leary. A change of farming policy and retirement from dairy farming has brought about various tractors, items of machinery and agricultural implements to be sold.

This is a typical Tuesday morning sale with something for everyone, not to be missed and hopefully enjoyed.

The machinery will be found to be of exceptional quality and well looked after.

Chris and his family moved from Bushton to the Castle Hill Estate in 1959 where they have farmed 325 acres of arable and pasture as part of the estate.

We are indebted to Mr Chris Bulled and his family for their instructions in this sale, we look forward to a good day at Buckingham's Leary and take this opportunity in wishing them all the very best for their future.

Sale contacts:

David Kivell 07899 960272

Lauren Dennis 01409 253253

Foreword



Notice to Purchasers

1. Registration and Bidding ONLINE- ONLINE BIDDING is via Marteye, intending bidders must download the MartEye App from your phone App store where you can register. Once you have downloaded the App you need to go on the Kivells Machinery Page and **Sign in** with your details and then click the **Join** button. You can also access MartEye through **kivellsmachinery.marteye.ie** where you will be directed straight to our page and you will be required to **Sign in** with your details and then click the **Join** button. Once you have done this process your application will come through to us for approval. **We strongly advise registering well ahead of the sale as 'late' registrants, on the morning of sale, run the risk of not being approved in time.**

2. Registration and Live Bidding All those attending the sale in persons will be required to register in the Kivells Pay Office whereby you will obtain a Bidding Card. The Bidding Card will be used to bid on the sale items. No shouting will be necessary.

3. Commission Bids - Kivells encourage the use of the Bidding Form which can be downloaded from www.kivells.com and phone bids may be possible - please contact the Auctioneers prior to the sale day.

4. Registration and Conditions of Sale - Kivells reserve the right to request additional information to include Driving License/Passport together with a Business Card/Utility Bills/Proof of Address/Business Letter Heading and the right to request a deposit ahead of any purchase or during sale proceedings. Kivells also reserve the right to deregister Buyers. It is strongly recommended that Bidders and Buyers read Kivells Standard Terms and Conditions of Sale ahead of the sale. Once you have registered you are confirming that you have read, agree with and will abide by those Conditions and these Notice to Purchasers. In registering you warrant that the information is correct, up to date on the sale closure date and you are over the age of 18. All registrations are provisional and subject to the approval by Kivells.

5. Lot Viewing – Viewing is permitted on the designated dates and times only unless previously agreed with the auctioneers. When inspecting lots, we encourage you to maintain a safe social distance and wear a face mask whilst on the Saleground.

Viewing Date(s) and Times are: 10am-4pm Friday before sale day and from 8am morning of the sale day.

6. Health & Safety - Kivells do not accept any liability for any damage or injury to persons, vehicles, plant, machinery, equipment or any lot not arising out of their negligence. When lots are located on The Sellers premises or 3rd party storage facilities then the aforementioned are responsible for Health & Safety. Any person entering the Salegrounds does so at their own risk, must comply with the requirements of any Health and Safety notices and guidelines and be appropriately dressed. All persons entering the premises are hereby given notice that there are significant risks due to the range and display of equipment, vehicle movement and the nature of the premises. Caution should be exercised and children must be fully supervised at all times. Permission from the Auctioneers / Seller or storage facility manager is required ahead of starting powered equipment or machinery. Any incidents or accidents on the premises should be reported to Kivells/ Seller or storage facility manager immediately. Kivells reserve the right for themselves and their Sellers and 3rd party storage facilities to refuse admission to any person or vehicle into the Saleground without giving reason. The Auctioneers also reserve the right for themselves and the Sellers and 3rd party storage facilities to halt any removal in the event there are concerns over the Buyer's or their contractor's capability and methods. The right extends to requesting confirmation of insurance cover, method statements and other assurances to include returnable deposits.

Notice to Purchasers

7. Descriptions of Lots - Kivells has limited access to lots prior to sale and therefore Buyers should satisfy themselves prior to making bids as to the condition of any Lot and should rely on their own judgement as to whether the Lot accords with its description. All Lots are sold with all faults and imperfections and errors of description. All statements are the Auctioneers or Sellers opinion and are not statements or representations of facts. You do not have to bid.

8. Payment - Currency GBP – Onsite Attendees - Day of Sale: Online Bidders - The auctioneers will either 1) contact you on day of sale for immediate payment or 2) will email an invoice on the first weekday following the close of the sale. With email payment is thereafter due no later than 24 hours from the time of forwarding the invoice. Payments will be due in full at the final bid price in respect of the lot sold plus all associated costs, Buyers premium and VAT. Payment will only be accepted from the successful purchaser or their duly appointed agent. Any payment is to be by a means approved by the Auctioneers and include the Buyers Commission and VAT. Our terms are strictly cash, Bank Transfer, Debit Card, NO Credit Cards are accepted. Our Bank Account details are: Sort Code 56-00-49 Account Number 32532822.

9. Payment in Cash - In order to comply with money laundering regulations The Auctioneers will not accept Cash payments above the maximum permitted at the time of sale. The maximum varies according to exchange rates and currently it is circa £7,000 - £9,000. Buyers are advised to check with the Auctioneers ahead of the sale.

10. Commission/Buyers Premium - All Lots will be subject to a Buyers Commission / Premium whether sold by auction, by private treaty or tender pre or post sale. VAT at the standard rate will be charged on all commissions. Buyers shall pay Commission to the Auctioneers at the following rates:

☐ **10% on any single lot up to and including £2000**

☐ **5% on any single lot over £2000**

☐ **Any single lot over £30,000 will be subject to a commission 'cap'**

Currency GBP

11. Risk - All lots remain at the risk of the Buyer from the fall of the hammer/closure of bidding for each lot and it is strongly advised that the Buyer effects insurance immediately.

12. Collection of Lots - All lots must be removed from the Saleground by end of play sale day (unless other arrangements have been made with the seller or the auctioneers). When removing lots, please ensure you maintain a safe social distance and we encourage you to wear a face mask. Lots can only be removed once full payment has been made. The Buyer is responsible for the collection of their lots and any associated costs of transport. Assistance with loading by The Auctioneers, Seller or the storage facility is given without any liability to The Buyer or The Buyers removal contractor. Buyers are strongly advised to use their own suitably qualified and insured contractors.

13. Value Added Tax - Please be aware some lots may be subject to VAT and therefore VAT will be charged in accordance to the current rate and added to all accounts and is applicable to the Commission/Buyers Premium. VAT status will be clearly stated in the Lot description.

Notice to Purchasers

14. Export of Lots - All goods purchased from Kivells auctions that are to be exported or removed from the United Kingdom will:

1. Be dealt with under the requirements set out of HM Customs and Excise publications:

a) VAT Notice 703 dated January 2021 – Goods exported from the UK from 1st January 2021.

2. Be Zero rated for VAT purposes subject to the following conditions being met.

a) The goods are removed from Great Britain within three months from the time of supply (the date of auction). b) Kivells are provided with valid written evidence that the Lots have been removed from Great Britain within three months of the auction closure date. Unless and until the above requirements are fulfilled Purchasers will be charged VAT at the Great Britain standard rate (currently 20%). This will only be refunded if all requirements within the regulations are met within the specified time limits.

The Purchaser or their agent will be responsible for removing the Lots from Great Britain and will act as the importer of record and will be responsible for payment of any VAT, duties, goods and services tax, or other sales or import taxes or duties arising on the exportation of the goods from Great Britain and the importation of the goods into any country.

Neither Kivells or the Seller are responsible for any VAT, duties, goods and services tax, or other sales or import taxes or duties arising on the exportation of the lots from Great Britain and the importation of the lots into any country by the Purchaser or their agent.

Kivells recommend exporters visit <https://www.gov.uk/check-customs-declaration>

ANY PHYTOSANITARY CERTIFICATION AND DOCUMENTATION REQUIRED TO EXPORT LOTS FROM GREAT BRITAIN ARE STRICTLY THE RESPONSIBILITY OF THE PURCHASER.



ONLINE BIDDING AVAILABLE

Simply Download the **MartEye App** from your phone App Store & Register.
Then press the **JOIN** button on the **Kivells Machinery Page**

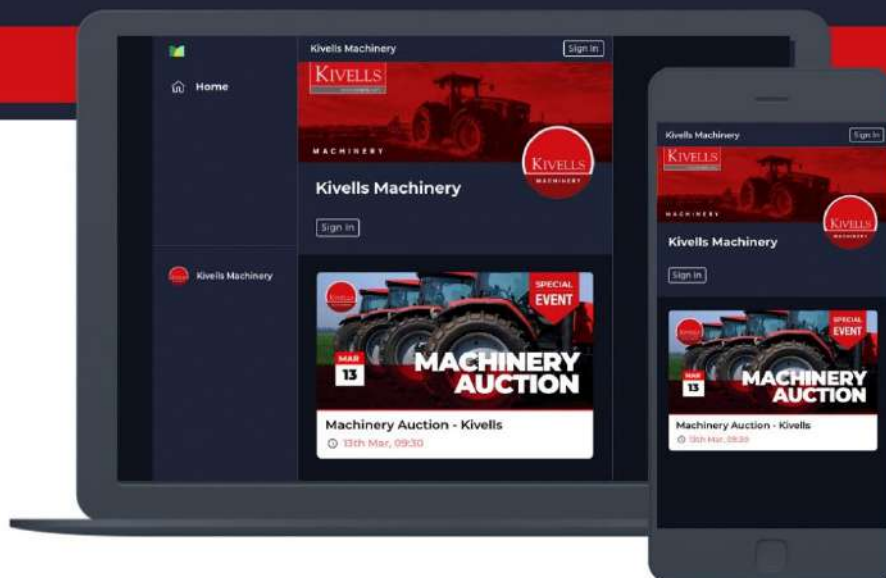
Your full details will be required for using online bidding and a trading reference **MUST** be provided prior to the sale day if you are not known to the Auctioneers. Applications made on the sale day for online bidding run the risk of not being approved. All buyers must ensure they have transport arranged prior to the Sale. All lots must be paid for prior to them leaving the Market.

Please Contact:
Holsworthy Market on **01409 253275**



ALSO AVAILABLE ON WEBSITE:

kivellsmachinery.marteye.ie



2018 Case 140 Puma with Quicke Q56 loader

3,069hrs, 50K box, front linkage PTO, air brakes, cab suspension

- WA18 BMO



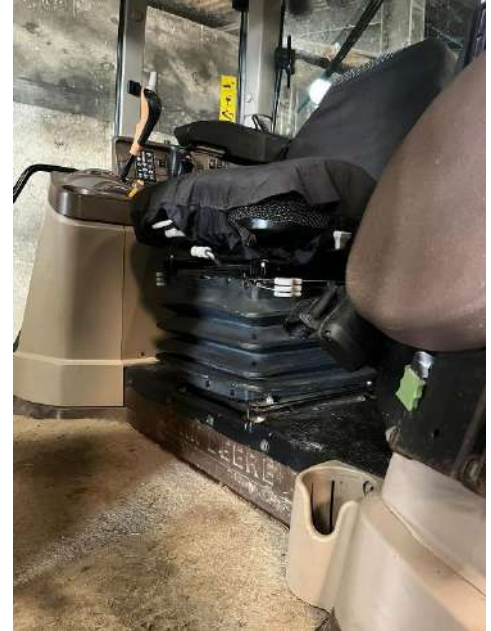
2019 Case Farmall 55A

1,638hrs, 2WD- WA69 FFB



2006 John Deere 6320

9,474hrs, 40K, air con, front linkage, with a chip, air seat



2010 John Deere 6630 with JD 633 loader

11,003hrs, air seat, 40K, air con



2014 MCM livestock trailer

18ft



West 10t silage
trailer

12t silage
trailer



2x dump trailers



26^{ft} bale trailer



Tipping trailer



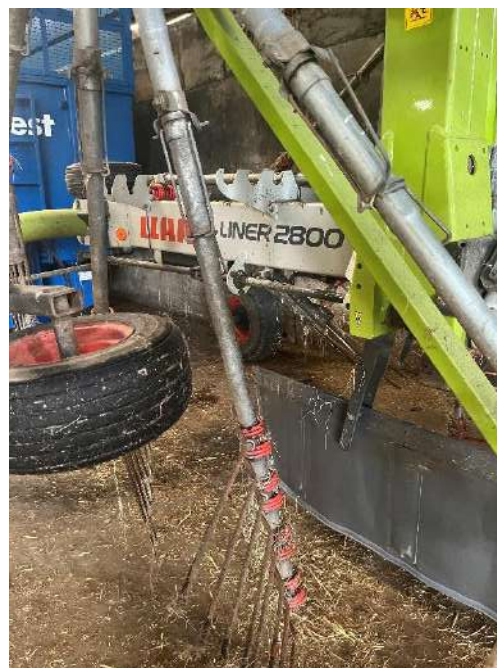
Lucas Castor 60R straw chopper



Claas disco 3000TC mower conditioner



Claas liner 2800 rake



Claas volto 770 tedder



HiSpec 2,600 slurry tanker



Krone 280CV mower



RS agrimix evolution 14



Howard HK31 power harrow



Redrock push off buck rake



Grass manager grass harrows



Watson RET 1236 roller



2x Ritchie bale squeezers



Alo 295kg grab

Shear grab



Kongskilde
vibratiller

Sulky fertiliser
spreader



Ballast roller



Slewctic bucket



Chain harrows



A frame & weights



Cubicle sand rake



Storth slurry stirrer



14X28 Swing over direct line parlour

Auto cake feeders, vacuum motor, iodine pumps, cluster flush, auto ID & computer system



Cubicle header/dispenser 150 with frame



Collinson 22t cake bin



2020 Collinson 17t bin



Feed trailers



11 cubicles

Yard scrape



Qty of wheels/tyres



Qty of Aug 2023 round bale silage



Further entries invited to:

01409 253253

machinery@kivells.com

WhatsApp 07399 298995

OUTSIDE ENTRIES INCLUDE-

1997 Mini Cooper 1275cc

Petrol injection with a genuine mileage of 71,619, comes with 12 months MOT as of 24.08.23



2021 3m aerator roller

Only done 50 acres since new



Notes

Directions

Buckingham Leary, Filleigh, Barnstaple, EX32 0SB

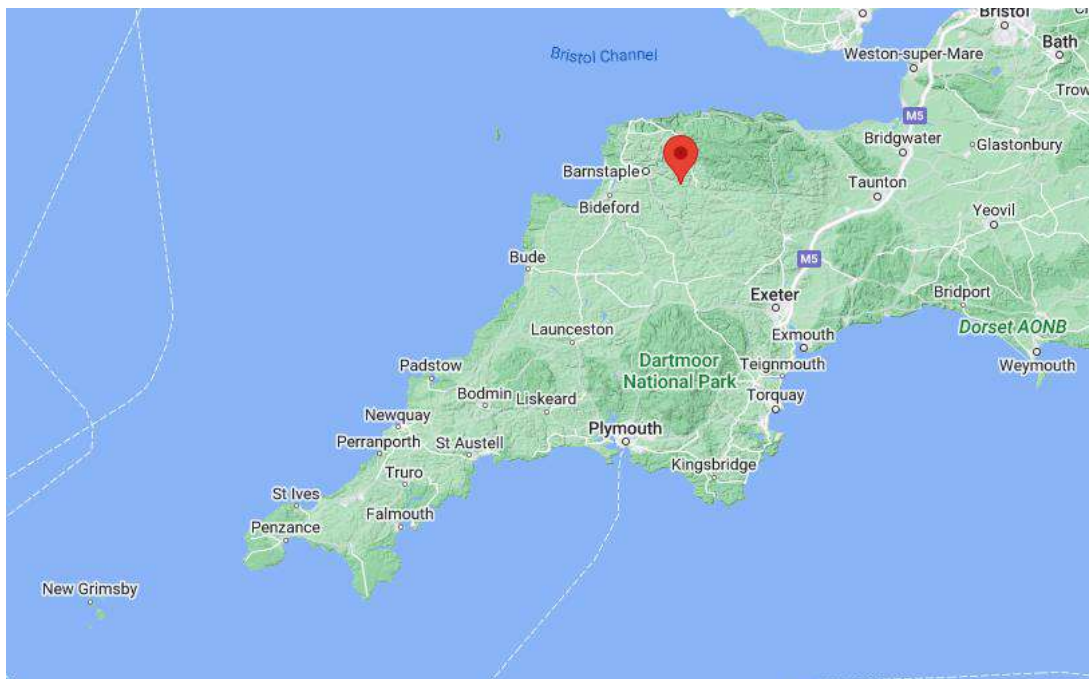
What 3 words: bloodshot.cupboards.emeralds

From Barnstaple-

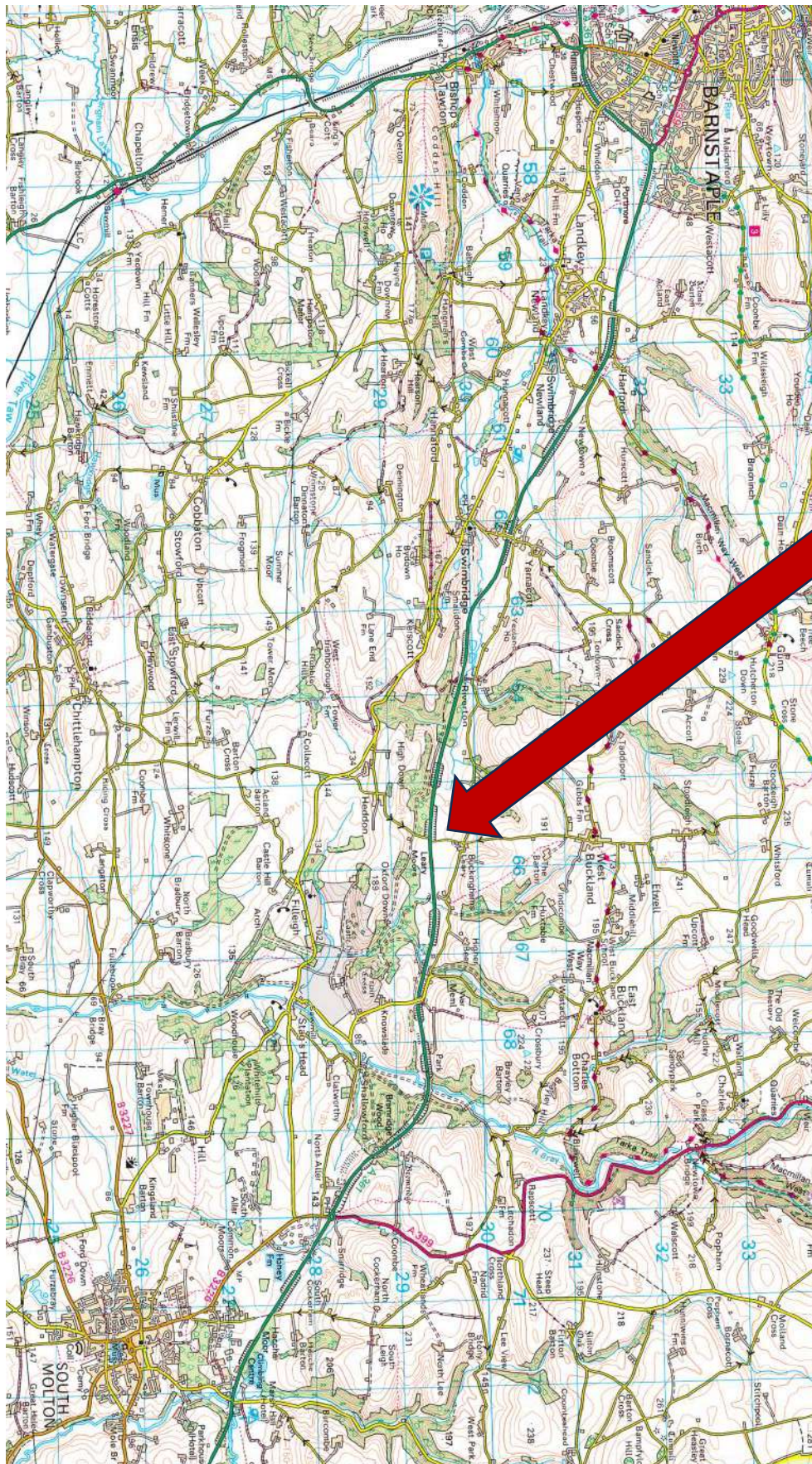
From Barnstaple, take the A361 (North Devon link road) towards South Molton, follow this road for approximately 5 miles and then turn left, signposted West Buckland. After 300yds, the farm will be on your right.

From South Molton-

From South Molton, take the B3226 towards Quince Honey Farm. At the roundabout, take the first exit onto the A361 (North Devon link road). Follow this road for approximately 4 miles and then turn right, signposted West Buckland. After 300yds, the farm will be on your right.



Directions



Turn here-

Signposted West Buckland

ONLINE BIDDING AVAILABLE

Simply Download the **MartEye App** from your phone App Store & Register.
Then press the **JOIN** button on the **Kivells Machinery Page**

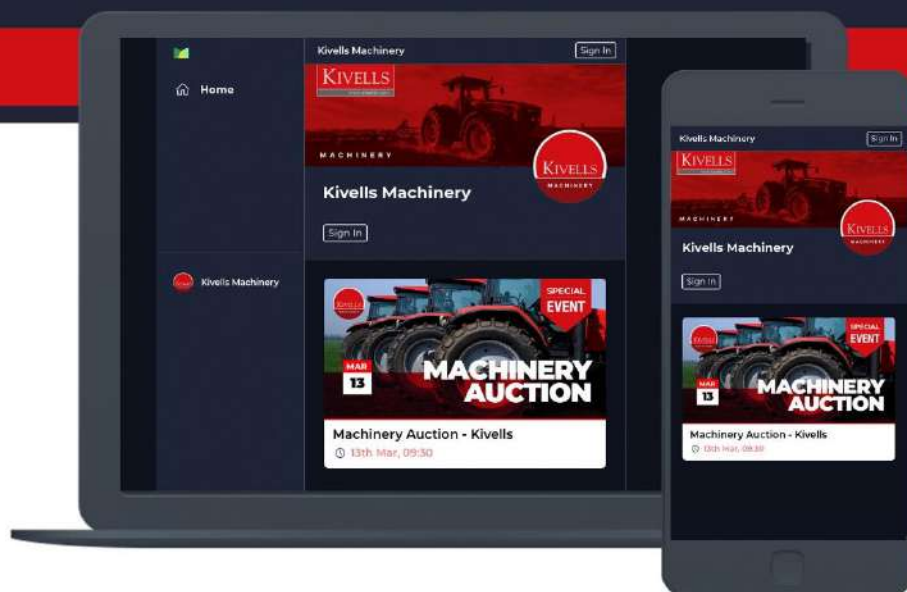
Your full details will be required for using online bidding and a trading reference **MUST** be provided prior to the sale day if you are not known to the Auctioneers. Applications made on the sale day for online bidding run the risk of not being approved. All buyers must ensure they have transport arranged prior to the Sale. All lots must be paid for prior to them leaving the Market.

Please Contact:
Holsworthy Market on **01409 253275**



ALSO AVAILABLE ON WEBSITE:

kivellsmachinery.marteye.ie



Tradition Meets Technology

Our team of Machinery Auctioneers & Coordinators are at hand to sell your farm machinery whether it be on site, online or at one of our many collective auctions conducted throughout the South West and beyond.



KIVELLS

MACHINERY

Kivells Machinery & Equipment Sales
Online | On Site | On Market Premises



- 'Our expertise centres around the agricultural sector and as our clients have diversified so have we.
- We sell a huge range of machinery and equipment both into and out of the sector.
- Our online service offering is market leading and the feedback we have received both from our vendors and buyers bears that out. We are proud of our reputation and we are confident the choice of Marteye as Kivells online service partner will add to that.
- Our policy is to offer the best online capability combined with tried and tested traditional methods. We recognise the role auctions play in the agricultural community enabling people to gather and meet and the wellbeing benefits that brings. It is all about achieving the right balance in a safe environment and at the same time maximise the realisation for our vendors and ease of use for our buyers. We believe Kivells combination of market leading sales technology and respect for tradition does just that.'

Thinking of Selling? Feel free to contact me or any of our team for a confidential discussion. It is never too early to plan and prepare'.

David Kivell
Director

www.kivells.com | machinery@kivells.com

Holsworthy Livestock Market,
New Market Road, Holsworthy, Devon EX22 7FA
01409 253275

Exeter Livestock Centre,
Matford Park Road, Exeter, Devon EX2 8FD
01392 251261